



# AOC AD110D0 Ergonomic Monitor Arm Instruction Manual

[Home](#) » [AOC](#) » AOC AD110D0 Ergonomic Monitor Arm Instruction Manual 

## Contents

- [1 AOC AD110D0 Ergonomic Monitor Arm](#)
- [2 Packaging List](#)
- [3 Clamp-Mounting Procedures](#)
- [4 Hole-Mounting Procedure](#)
- [5 Cable Management](#)
- [6 Installing VESA Mount](#)
- [7 Monitor Weight Adjustment](#)
- [8 Adjust Monitor angles](#)
- [9 SPECIFICATION](#)
- [10 Documents / Resources](#)
  - [10.1 References](#)
- [11 Related Posts](#)

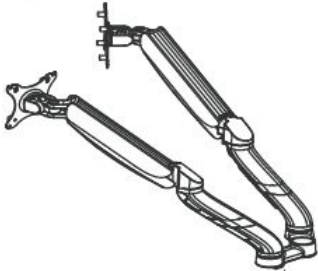
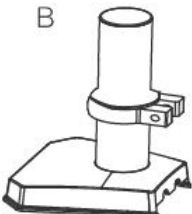
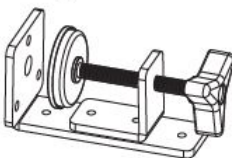











**AOC AD110D0 Ergonomic Monitor Arm**



AOC Ergonomic Monitor Arm  
Model AD110D0

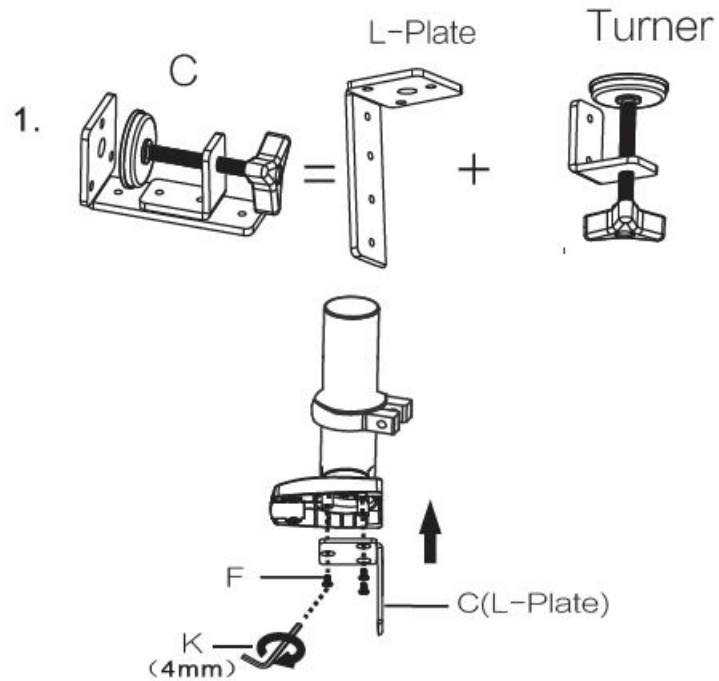
### Packaging List

 A		
 B	 C	
 D M4x12MM		 E M5x12MM
 F (M6x12)-3pcs	 G	 H
 I	 J	 K (4mm)  L (5mm)

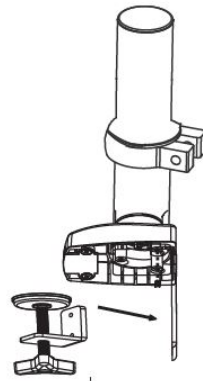
### Clamp-Mounting Procedures

## STEP 1

1. Tighten the 3pcs of Screws (black only) to the arm base.

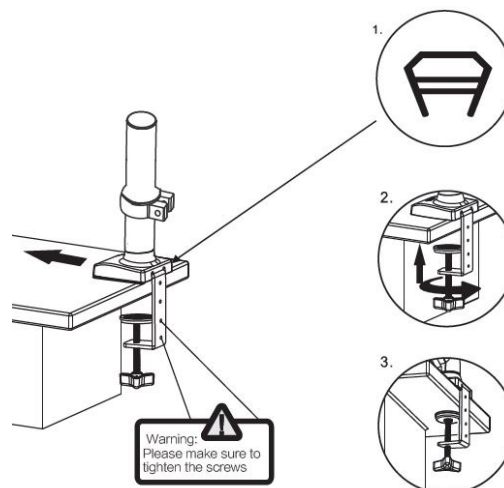


2. Once you have Secured the L-Shaped bracket to the base, attach the turner apparatus to the bracket.



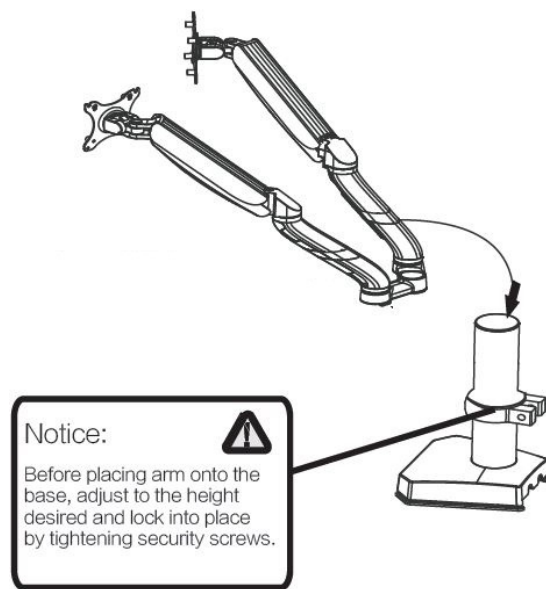
## Step 2

Place (H) plastic plate on the desk surface before placing arm base



## Step3

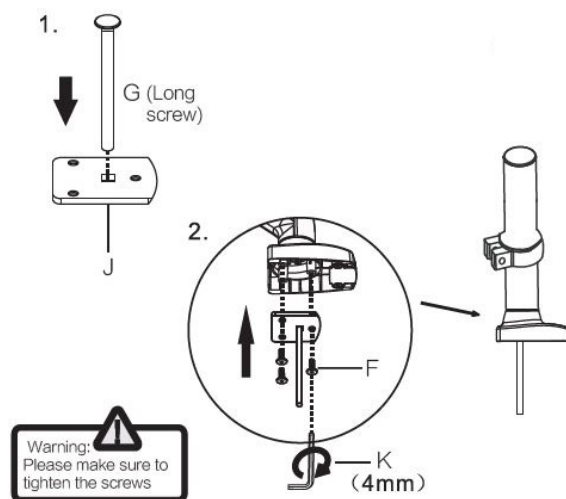
Once base (B) is secured to the desk, place the arm (A) to the base



## Hole-Mounting Procedure

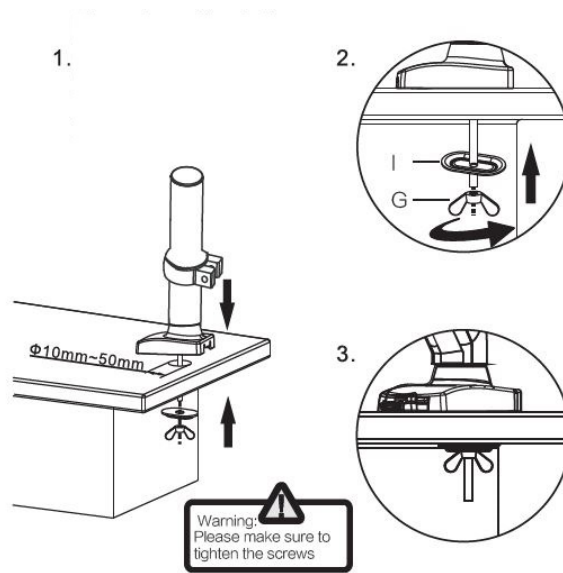
### Step1

Insert screws from (G) into (J) Plate, tighten the 3 screws (F) onto the arm base.

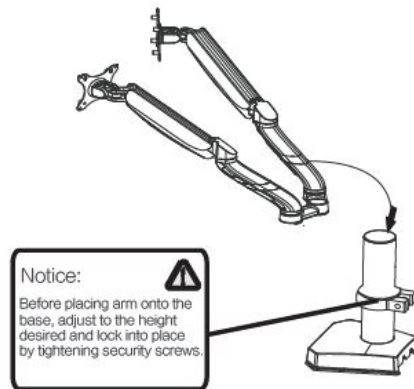


### Step 2

Place piece (I) onto the long screw (G) first, then utilize the wingnut provided to secure the base to the surface you are attaching the arm(s) to.

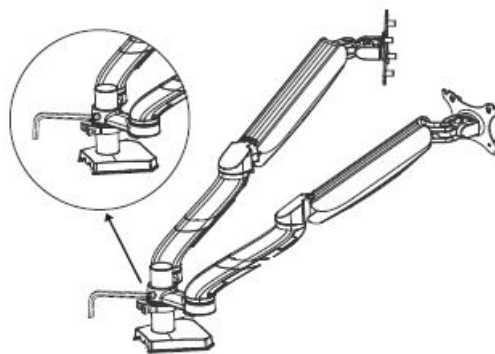


### Step 3

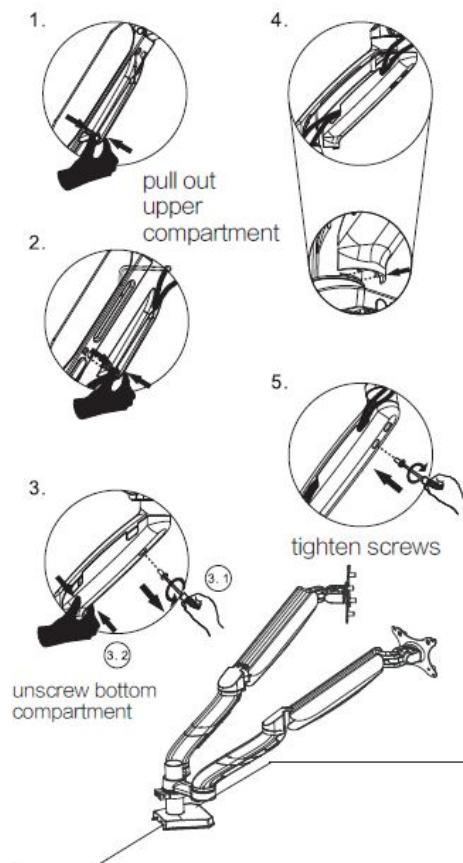


### Step 4

When monitor arms are placed in correct position, tighten the hidden screw to lock in monitors arm from shifting.



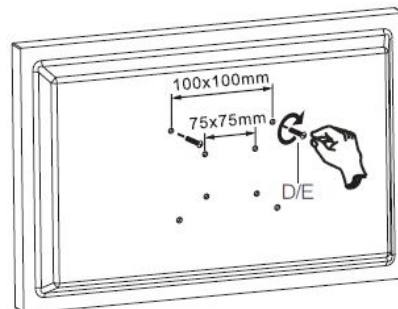
### Cable Management



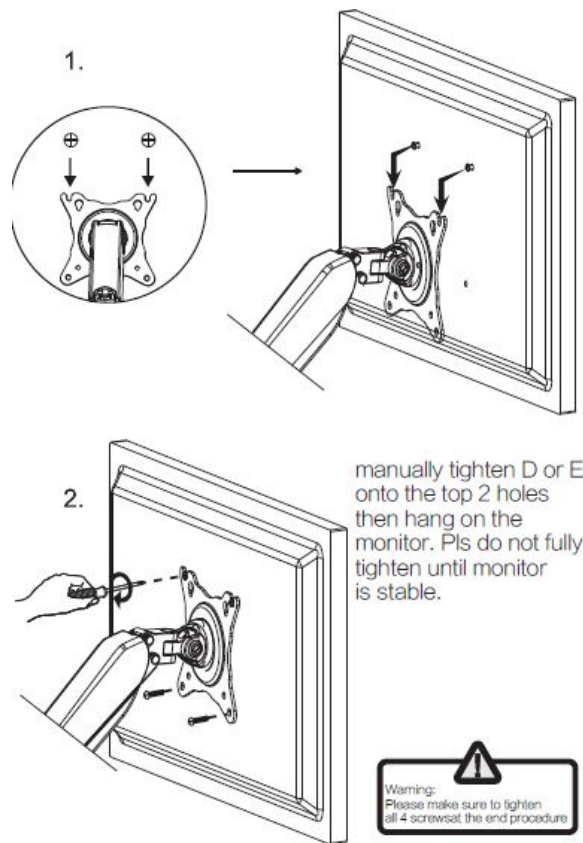
## Installing VESA Mount

### Step 1

VESA:75x75mm,100x100mm



### Step 2

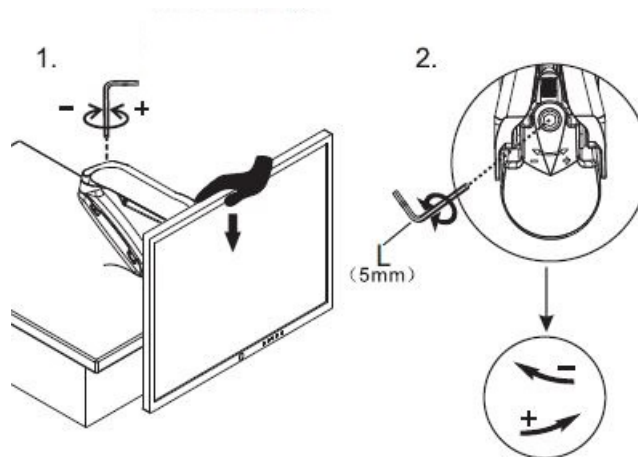


## Monitor Weight Adjustment

“+” Increase holding capacity

“-” Decrease holding capacity

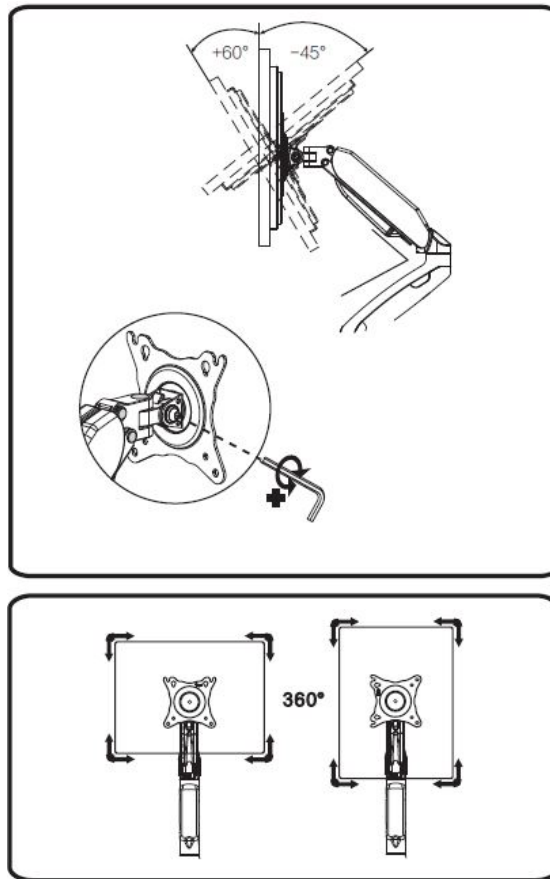
Once monitor is stable, tighten top 2 and bottom 2 as well.



**Noted:** Please ensure monitor is within 2-9kg weight range  
**Condition**

1. After attached monitor, your monitor is freely moveable in any direction without adjustment.
2. After monitor is attached, if screen will bounce up, pls use rench provided and turn “-” clockwise direction until stablized.
3. After monitor is attached, if screen will sink,pls use rench provided and turn “+” clockwise direction until stablized.

## Adjust Monitor angles

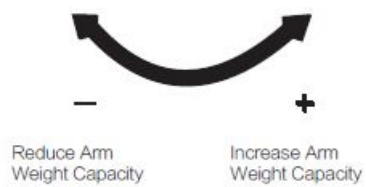


## AFTER INSTALLATION, ADJUST GAS-SPRING POWER

### warning

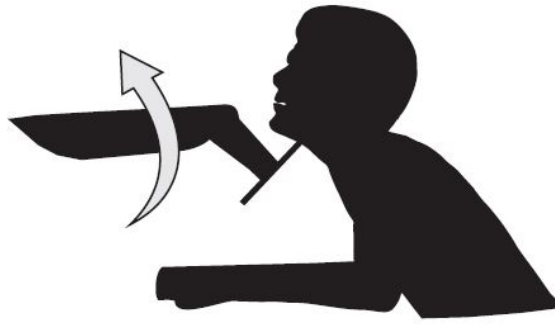
1. Ensure the Monitor is tightened to Monitor Arm
2. Ensure Monitor is not Over-weighted (2-9kg)

### Weight Adjustment



### Warning





## SPECIFICATION

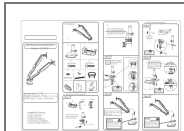
- **Monitor Size:** 13~32"
- **Weight Capacity:** 2~9kg 4.09~19.84 LB
- **VESA Size:** 75x75mm, 100x100mm

Envision Peripherals, Inc.  
490 N.Mcarthy Blvd. Suite #120  
Milpitas, CA 95035

[www.aoc.com](http://www.aoc.com)

Made in China

## Documents / Resources



[AOC AD110D0 Ergonomic Monitor Arm](#) [pdf] Instruction Manual  
AD110D0 Ergonomic Monitor Arm, AD110D0, Ergonomic Monitor Arm, Monitor Arm

## References

- [AOC](#)