

AOC GAMING 24G4X LED Monitor 180Hz FHD IPS Display



# AOC GAMING 24G4X LED Monitor 180Hz FHD IPS Display User Manual

[Home](#) » [AOC GAMING](#) » AOC GAMING 24G4X LED Monitor 180Hz FHD IPS Display User Manual 

## Contents

- 1 AOC GAMING 24G4X LED Monitor 180Hz FHD IPS Display
- 2 Product Information
- 3 Safety
  - 3.1 Installation And Cleaning
- 4 Setup
- 5 Adjusting
- 6 Troubleshoot
- 7 Specification
- 8 Pin Assignments
- 9 Documents / Resources
  - 9.1 References



AOC GAMING 24G4X LED Monitor 180Hz FHD IPS Display



## Product Information

### Specifications

- **Power Source:** 100-240V AC, Min. 5A
- **Plug Type:** Three-pronged grounded plug
- **Ventilation Space:** 4 inches (10cm) around the monitor

### FAQ

- **Q:** Can I use the monitor with a different power source?
  - **A:** No, the monitor should only be operated with the specified power source mentioned on the label for safety reasons.
- **Q:** What should I do if the monitor tilts beyond -5 degrees?
  - **A:** Avoid tilting the monitor beyond -5 degrees to prevent potential damage that may not be covered under warranty.

## Safety

### National Conventions

The following subsections describe national conventions used in this document.

## Notes, Cautions, and Warnings

Throughout this guide, blocks of text may be accompanied by an icon and printed in bold type or in italic type. These blocks are notes, cautions, and warnings, and they are used as follows:

**NOTE:** A NOTE indicates important information that helps you make better use of your computer system.

**CAUTION:** A CAUTION indicates either potential damage to hardware or loss of data and tells you how to avoid the problem.

**WARNING:** A WARNING indicates the potential for bodily harm and tells you how to avoid the problem. Some warnings may appear in alternate formats and may be unaccompanied by an icon. In such cases, the specific presentation of the warning is mandated by regulatory authority.

## Power

### Warning

- The monitor should be operated only from the type of power source indicated on the label. If you are not sure of the type of power supplied to your home, consult your dealer or local power company.
- The monitor is equipped with a three-pronged grounded plug, a plug with a third (grounding) pin.
- This plug will fit only into a grounded power outlet as a safety feature. If your outlet does not accommodate the three-wire plug, have an electrician install the correct outlet, or use an adapter to ground the appliance safely. Do not defeat the safety purpose of the grounded plug.
- Unplug the unit during a lightning storm or when it will not be used for long periods of time. This will protect the monitor from damage due to power surges.
- Do not overload power strips and extension cords. Overloading can result in fire or electric shock.
- To ensure satisfactory operation, use the monitor only with UL listed computers which have appropriate configured receptacles marked between 100-240V AC, Min. 5A.
- The wall socket shall be installed near the equipment and shall be easily accessible.

## Installation And Cleaning

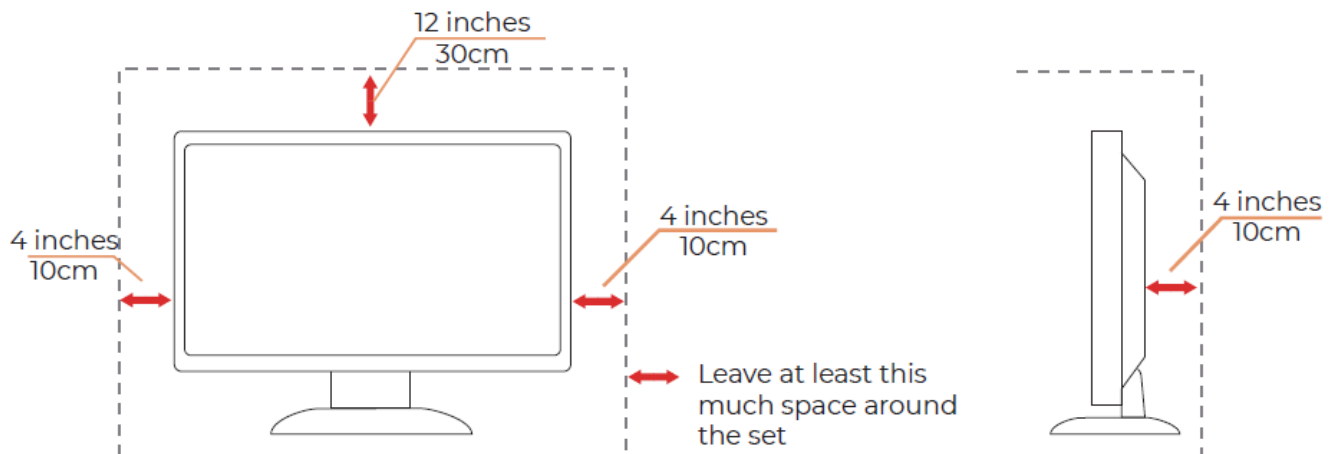
### Installation

- Do not place the monitor on an unstable cart, stand, tripod, bracket, or table. If the monitor falls, it can injure a person and cause serious damage to this product. Use only a cart, stand, tripod, bracket, or table recommended by the manufacturer or sold with this product. Follow the manufacturer's instructions when installing the product and use mounting accessories recommended by the manufacturer. A product and cart combination should be moved with care.
- Never push any object into the slot on the monitor cabinet. It could damage circuit parts causing a fire or electric shock. Never spill liquids on the monitor.
- Do not place the front of the product on the floor.
- If you mount the monitor on a wall or shelf, use a mounting kit approved by the manufacturer and follow the kit instructions.

- Leave some space around the monitor as shown below. Otherwise, air-circulation may be inadequate hence overheating may cause a fire or damage to the monitor.
- To avoid potential damage, for example the panel peeling from the bezel, ensure that the monitor does not tilt downward by more than -5 degrees. If the -5 degree downward tilt angle maximum is exceeded, the monitor damage will not be covered under warranty.

See below the recommended ventilation areas around the monitor when the monitor is installed on the wall or on the stand:

#### Installed with stand



#### Cleaning

- Clean the cabinet regularly with a water-dampened, soft cloth.



- When cleaning use a soft cotton or microfiber cloth. The cloth should be damp and almost dry, do not allow liquid into the case.
- Please disconnect the power cord before cleaning the product.

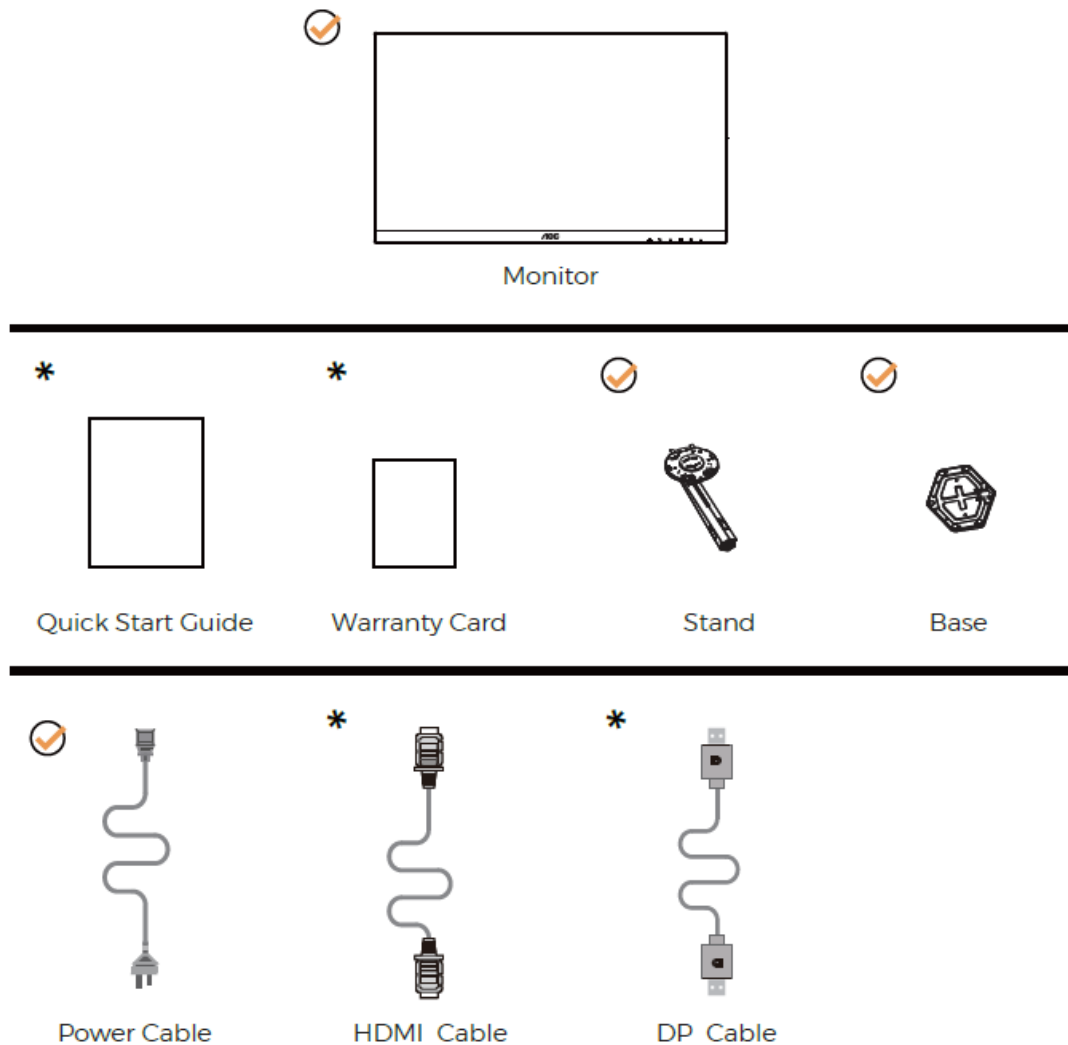
#### Other

- If the product is emitting a strange smell, sound or smoke, disconnect the power plug IMMEDIATELY and contact a Service Center.
- Make sure that the ventilating openings are not blocked by a table or curtain.
- Do not engage the LCD monitor in severe vibration or high impact conditions during operation.
- Do not knock or drop the monitor during operation or transportation.

- The power cords shall be safety approved. For Germany, it shall be H03VV-F, 3G, 0.75 mm2, or better.
- For other countries, the suitable types shall be used accordingly.
- Excessive sound pressure from earphones and headphones can cause hearing loss. Adjustment of the equalizer to maximum increases the earphones and headphones output voltage and therefore the sound pressure level.

## Setup

### Contents in Box

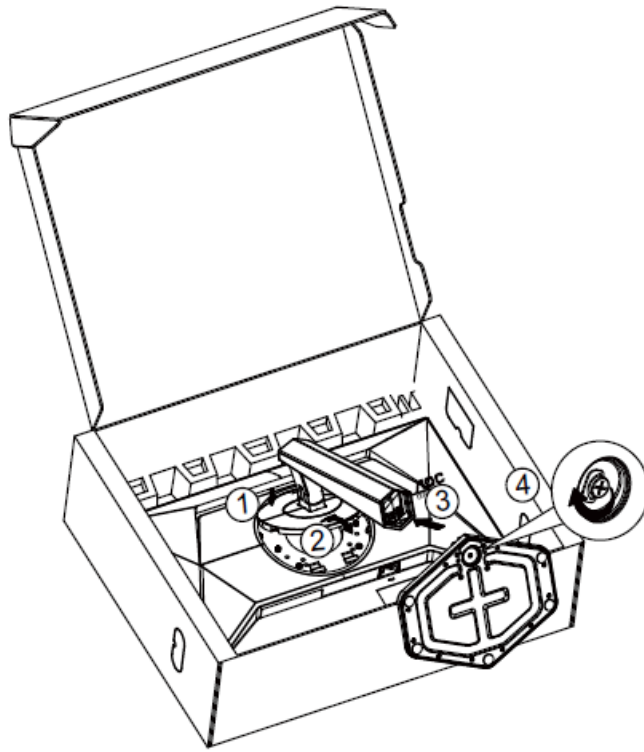


- Not all signal cables will be provided for all countries and regions. Please check with the local dealer or AOC branch office for confirmation.

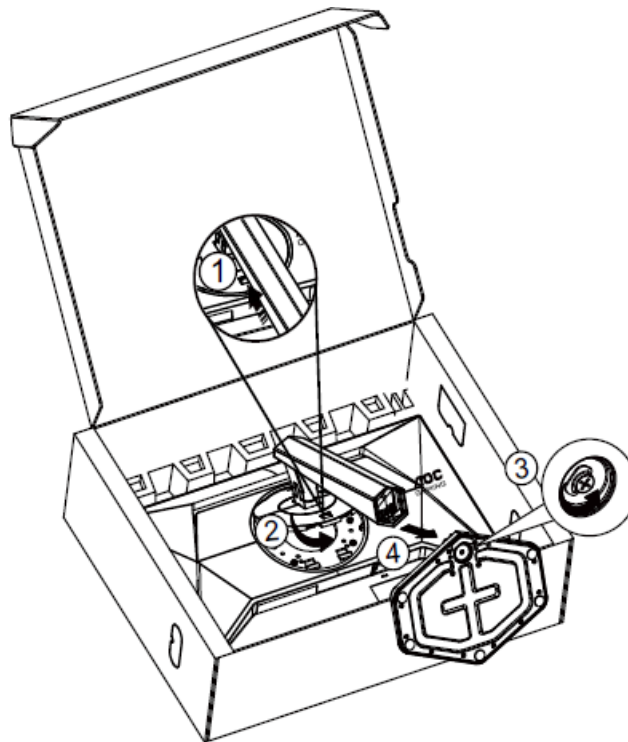
### Set-up Stand & Base

Please setup or remove the base following the steps as below.

### Setup:



**Remove:**



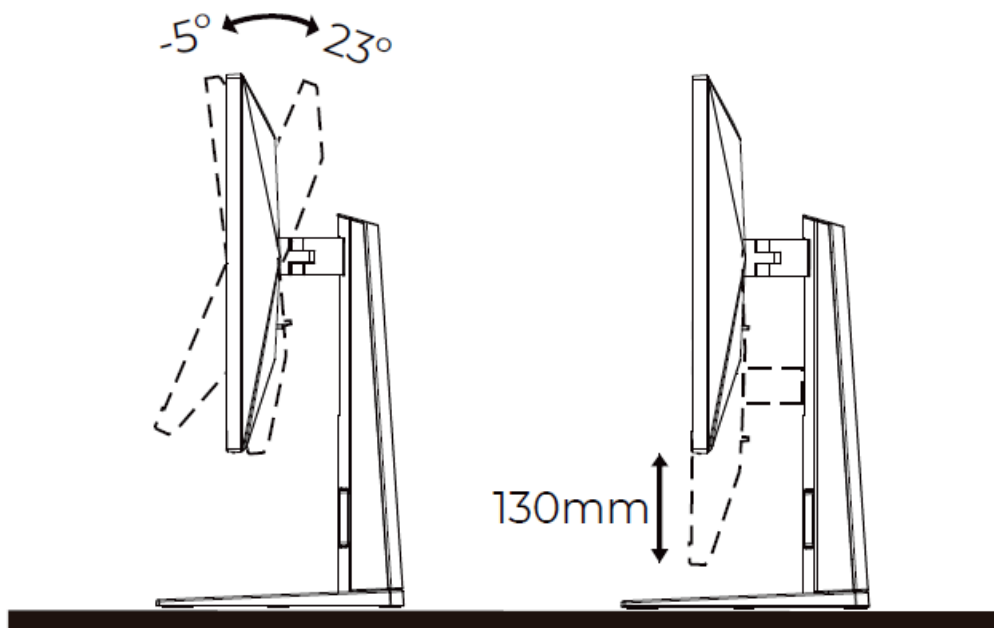
## NOTE

- Display design may differ from those illustrated.

## Adjusting Viewing Angle

To achieve the best viewing experience, it is recommended that the user can make sure they are able to look at their whole face on the screen, then adjust the monitor's angle based on personal preference. Hold the stand so you will not topple the monitor when you change the monitor's angle.

**You are able to adjust the monitor as below:**



**NOTE:**

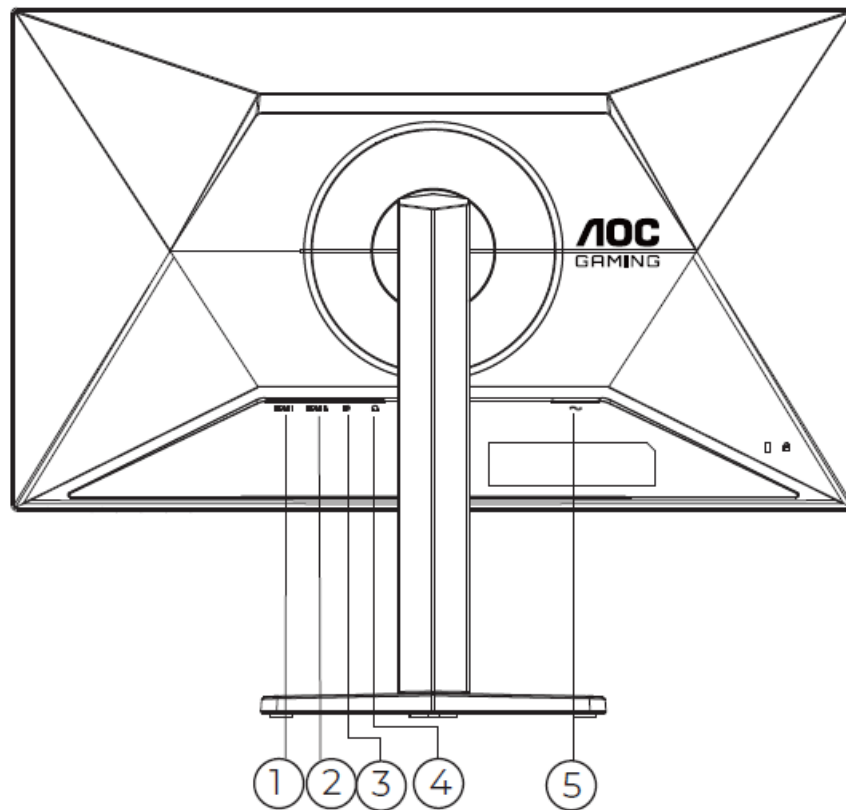
- Do not touch the LCD screen when you change the angle. Touching the LCD screen may cause damage.

**Warning**

- To avoid potential screen damage, such as panel peeling, ensure that the monitor does not tilt downward by more than  $-5$  degrees.
- Do not press the screen while adjusting the angle of the monitor. Grasp only the bezel.

**Connecting the Monitor**

Cable Connections In Back of Monitor and Computer:



- 1. HDMI 1
- 2. HDMI 2
- 1. DisplayPort
- 2. Earphone
- 3. Power

### Connect to PC

1. Connect the power cord to the back of the display firmly.
2. Turn off your computer and unplug its power cable.
3. Connect the display signal cable to the video connector on the back of your computer.
4. Plug the power cord of your computer and your display into a nearby outlet.
5. Turn on your computer and display.

If your monitor displays an image, installation is complete. If it does not display an image, please refer to Troubleshoot.

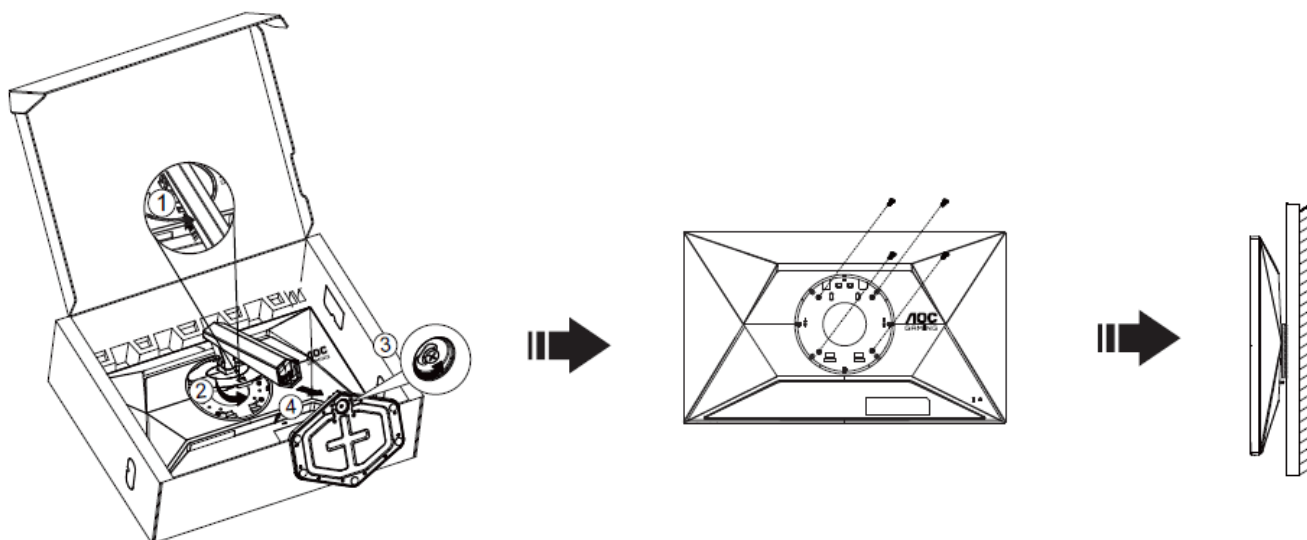
To protect equipment, always turn off the PC and LCD monitor before connecting.

### Wall Mounting

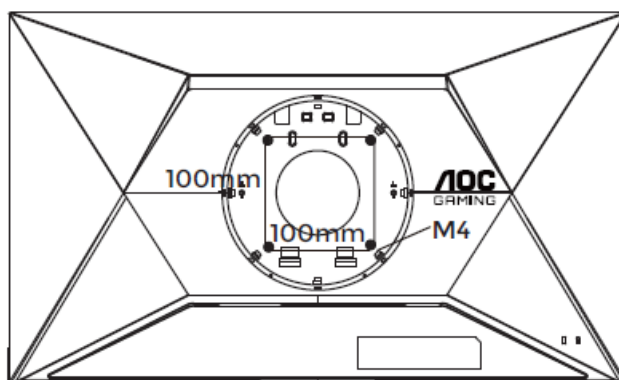
Preparing to Install An Optional Wall Mounting Arm.

This monitor can be attached to a wall mounting arm you purchase separately. Disconnect power before this procedure. Follow these steps:

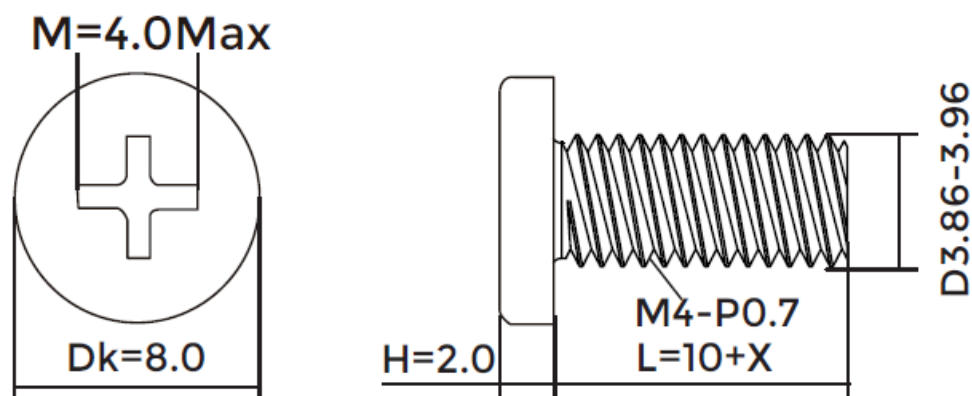




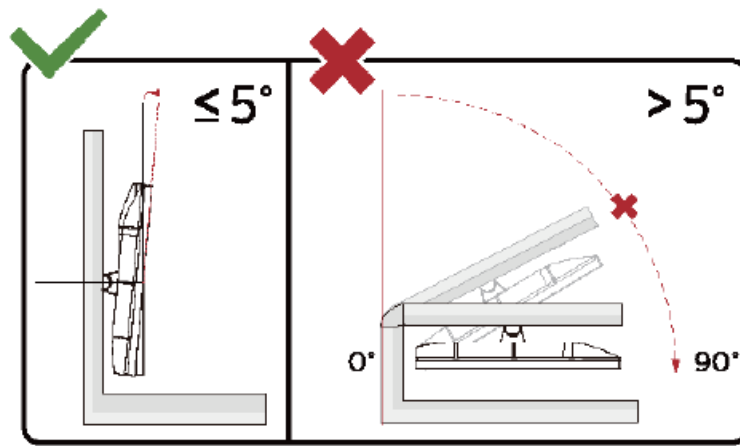
1. Remove the base.
2. Follow the manufacturer's instructions to assemble the wall mounting arm.
3. Place the wall mounting arm onto the back of the monitor. Line up the holes of the arm with the holes in the back of the monitor.
4. Insert the 4 screws into the holes and tighten.
5. Reconnect the cables. Refer to the user's manual that came with the optional wall mounting arm for instructions on attaching it to the wall.



Specification of wall hanger screws:  $M4*(10+X)mm$  (X=Thickness of Wall mount bracket)



**Note:** VESA mounting screw holes are not available for all models, please check with the dealer or official department of AOC. Always contact manufacturer for wall-mount installation.



\* Display design may differ from those illustrated.

#### **WARNING:**

- To avoid potential screen damage, such as panel peeling, ensure that the monitor does not tilt downward by more than -5 degrees.
- Do not press the screen while adjusting the angle of the monitor. Grasp only the bezel.

#### **Adaptive-Sync function**

1. Adaptive-Sync function works with DP/HDMI
2. Compatible Graphics Card: Recommended list is as below, also could be checked by visiting [www.AMD.com](http://www.AMD.com)

#### **Graphics Cards**

- Radeon™ RX Vega series
- Radeon™ RX 500 series
- Radeon™ RX 400 series
- Radeon™ R9/R7 300 series (R9 370/X, R7 370/X, R7 265 except)
- Radeon™ Pro Duo (2016)
- Radeon™ R9 Nano series
- Radeon™ R9 Fury series
- Radeon™ R9/R7 200 series (R9 270/X, R9 280/X except)

#### **Processors**

- AMD Ryzen™ 7 2700U
- AMD Ryzen™ 5 2500U
- AMD Ryzen™ 5 2400G
- AMD Ryzen™ 3 2300U
- AMD Ryzen™ 3 2200G
- AMD PRO A12-9800
- AMD PRO A12-9800E

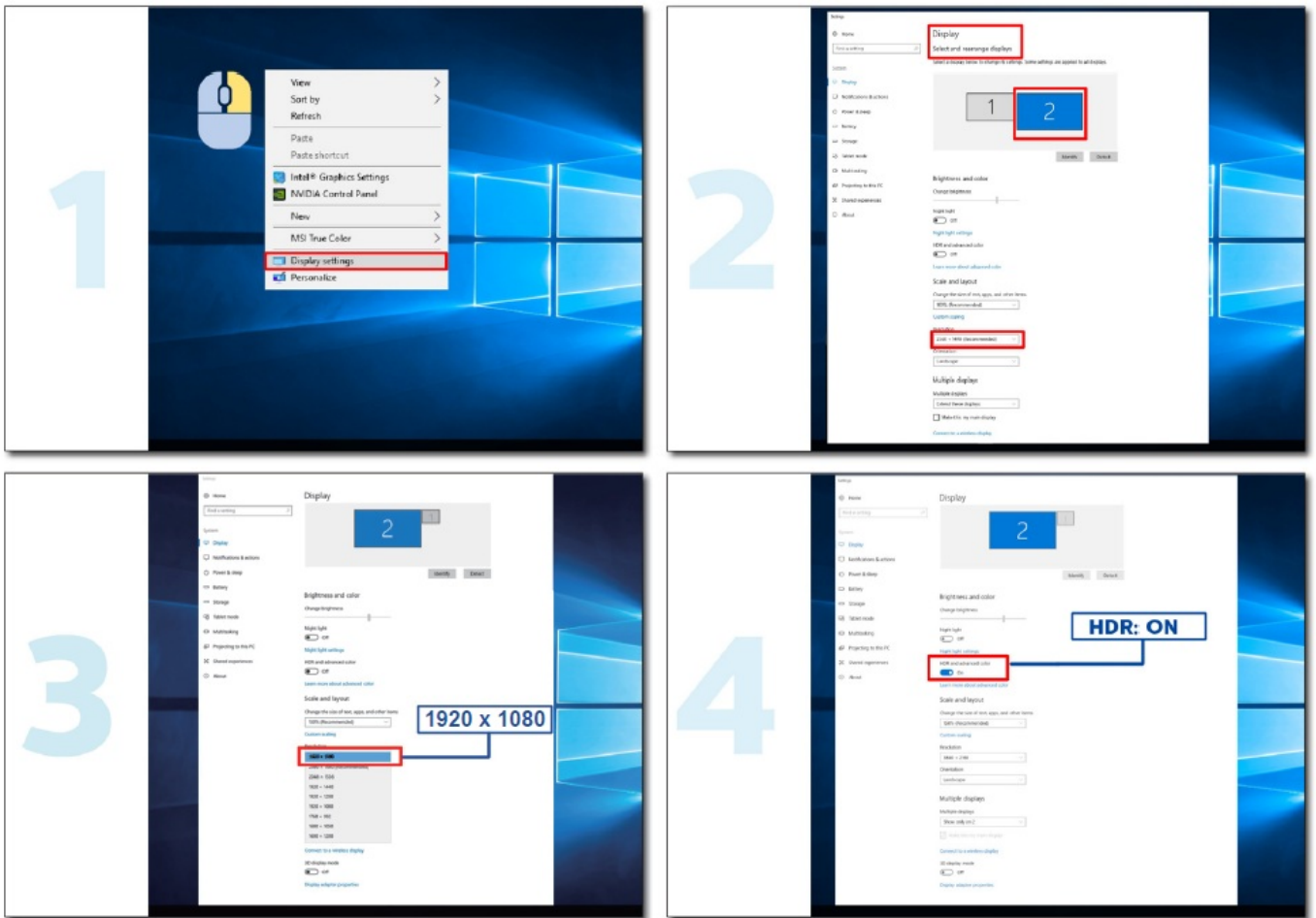
- AMD PRO A10-9700
- AMD PRO A10-9700E
- AMD PRO A8-9600
- AMD PRO A6-9500
- AMD PRO A6-9500E
- AMD PRO A12-8870
- AMD PRO A12-8870E
- AMD PRO A10-8770
- AMD PRO A10-8770E
- AMD PRO A10-8750B
- AMD PRO A8-8650B
- AMD PRO A6-8570
- AMD PRO A6-8570E
- AMD PRO A4-8350B
- AMD A10-7890K
- AMD A10-7870K
- AMD A10-7850K
- AMD A10-7800
- AMD A10-7700K
- AMD A8-7670K
- AMD A8-7650K
- AMD A8-7600
- AMD A6-7400K

## **HDR**

It is compatible with input signals in HDR10 format.

The display may automatically activate the HDR function if the player and content are compatible. Please contact the device manufacturer and the content provider for information on the compatibility of your device and content. Please select “OFF” for the HDR function when you have no need for automatical activation function.

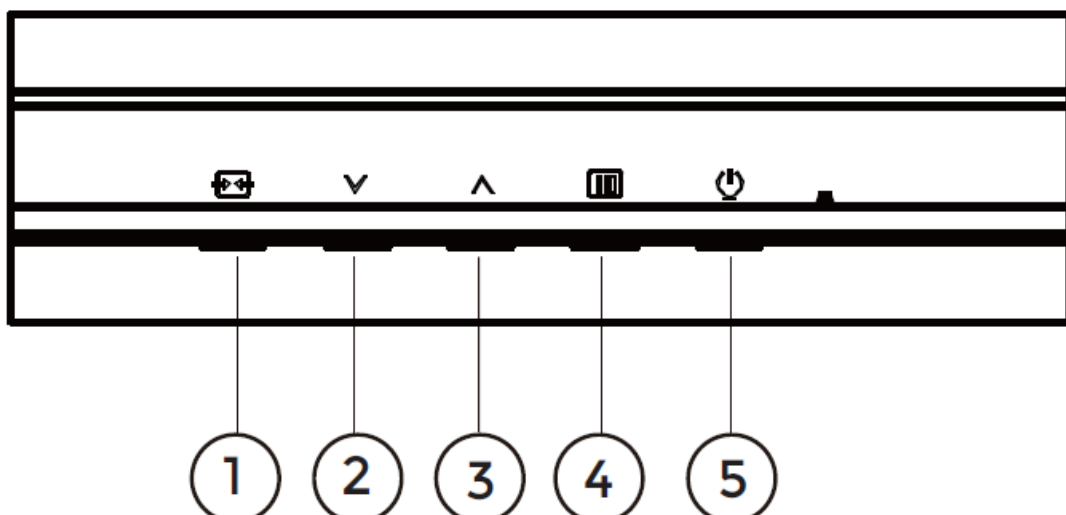
## **Note:**



1. No special setting is needed for the DisplayPort/HDMI interface in WIN10 versions lower (older) than V1703.
2. Only the HDMI interface is available and the DisplayPort interface cannot function in WIN10 version V1703.
3. 3840×2160 only suggest for Blu-ray Player, Xbox and PlayStation.
  - The display resolution is set to 1920\*1080, and HDR is preset to ON.
  - After entering an application, the best HDR effect can be achieved when the resolution is changed to 1920\*1080 (if available).

## Adjusting

## Hotkeys



|   |              |
|---|--------------|
| 1 | Source/Exit  |
| 2 | Game Setting |
| 3 | Dial Point   |
| 4 | Menu/Enter   |
| 5 | Power        |

#### **Menu/Enter**

- Press to display the OSD or confirm the selection.




#### **Power**

- Press the Power button to turn on the monitor.

#### **Dial Point**

- When there is no OSD, press Dial Point button to show / hide Dial Point.

#### **Game Setting**

- When there is no OSD, press “” key to open game mode function, then press “” or “” key to select Game Setting (Standard, FPS, RTS, Racing, Gamer 1, Gamer 2 or Gamer 3) basing on the different game types.






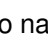









#### **Source/Exit**

- When the OSD is closed, press Source/Exit button will be Source hot key function.
- When the OSD menu is active, this button acts as an exit key (to exit the OSD menu).

#### **OSD Setting**

Basic and simple instruction on the control keys.



1. Press the  MENU-button to activate the OSD window.
2. Press  or  to navigate through the functions. Once the desired function is highlighted, press the  MENU-button / OK to activate it, press  or  to navigate through the sub-menu functions. Once the desired sub-menu function is highlighted, press  MENU-button / OK to activate it.
3. Press  or  to change the settings of the selected function. Press  /  to exit. If you want to adjust any other function, repeat steps 2-3.
4. OSD Lock Function: To lock the OSD, press and hold the  MENU-button while the monitor is off and then press  power button to turn the monitor on. To unlock the OSD – press and hold the MENU  button while the monitor is off and then press power  button to turn the monitor on.

#### Notes:

1. If the product has only one signal input, the item of "Input Select" is unable to be adjusted.
2. If the input signal resolution is the native resolution or Adaptive-Sync, then the item "Image Ratio" is invalid.

#### Game Setting



RESOLUTION

1920x1080

REFRESH RATE

60 HZ

GAMING MODE

Standard

BRIGHTNESS

80

INPUT SOURCE

DP

Game Setting

Picture

Settings

Audio

OSD Setup

Information

Gaming Mode

Shadow Control

Game Color

Adaptive-Sync

Dial Point

Shadow Boost

MBR

MBR Sync



OK



|                |                                      |  |
|----------------|--------------------------------------|--|
| Gaming Mode    | Standard                             | Enhance readability for suitable web and mobile games.   |
|                | FPS                                  | For playing FPS (first Person Shooters) games. Improves black level in dark theme.   |
|                | RTS                                  | For playing RTS (Real Time Strategy) games. Improves the image quality.  |
|                | Racing                               | For playing Racing games, Provides fastest response time and high color saturation.  |
|                | Gamer 1                              | User's preference settings saved as Gamer 1.   |
|                | Gamer 2                              | User's preference settings saved as Gamer 2.   |
|                | Gamer 3                              | User's preference settings saved as Gamer 3.   |
| Shadow Control | 0 ~ 100                              | <p>Shadow Control Default is 50, then end-user can adjust from 50 to 100 or 0 to 50 to increase/decrease contrast for a clearer picture.</p> <ol style="list-style-type: none"> <li>1. If picture is too dark to be saw the detail clearly, adjusting from 50 to 100 for clear a picture.</li> <li>2. If picture is too white to be saw the detail clearly, adjusting from 50 to 0 for a clearer picture.</li> </ol> |
| Game Color     | 0 ~ 20                               | Game Color will provide 0-20 level for adjusting saturation to get a better picture.   |
| Adaptive-Sync  | Off / On                             | <p>Disable or Enable Adaptive-Sync.</p> <p>Adaptive-Sync Run Reminder: When the Adaptive-Sync feature is enabled, there may be flashing in some game environments.</p>   |
| Dial Point     | Off / On / Dynamic                   | The "Dial Point" function places an aiming indicator in the center of screen for helping gamers to play First Person Shooter (FPS) games with accurate and precise aiming.   |
| Shadow Boost   | Off / Level 10 / Level 20 / Level 30 | Enhance the screen details in the dark or bright area to adjust the brightness in the bright area and ensure that it is not oversaturated.   |
| MBR            | 0 ~ 20                               | <p>MBR (Motion Blur Reduction) Provides 0-20 levels of adjustments to reduce motion blur. Note:</p> <ol style="list-style-type: none"> <li>1. The MBR function can be adjusted when Adaptive-Sync is turned off, and the refresh rate <math>\geq 75\text{Hz}</math>.</li> <li>2. The brightness of the screen will decrease as the adjustment value increases.</li> </ol>  |



|               |   |  |
|---------------|---|--|
| MBR Sync      | Off / On  | <p>Disable or Enable MBR Sync (Motion Blur Remove).</p> <p>Note:</p> <p>The MBR Sync function can be adjusted when Adaptive-Sync is turned On, and the refresh rate <math>\geq 75\text{Hz}</math>.</p>   |
| Overdrive     | Off / Weak / Medium / Strong / Boost              | <p>Adjust the response time.</p> <p>Note:</p> <ol style="list-style-type: none"> <li>1. If the user adjusts OverDrive to “Strong” the displayed image may be blurred. Users can adjust the OverDrive level or turn it off according to their preferences.</li> <li>2. The “Boost” function is optional when Adaptive-Sync is turned off, and the refresh rate is <math>\geq 75\text{Hz}</math>.</li> <li>3. The screen brightness will decrease when the “Boost” function is turned on.</li> </ol> |
| Frame Counter | Off / Right-up / Right-Down / Left-Up / Left-Down | <p>Display V frequency on the corner selected.</p>   |

**Note:**

1. When “HDR Mode” under “Picture” is enable, the items “Gaming Mode”, “Shadow Control”, “Game Color” cannot be adjusted.
2. When “HDR” under “Picture” is enable, the items “Gaming Mode”, “Shadow Control”, “Shadow Boost”, “Game Color”, “MBR” and “MBR Sync” can not be adjusted. “Boost” under “Overdrive” is not available.
3. When the “Color Space” under “Picture” is set to sRGB, the items “Gaming Mode”, “Shadow Control”, “Shadow Boost” and “Game Color” cannot be adjusted.

**Picture**



RESOLUTION

1920x1080

REFRESH RATE

60 HZ

GAMING MODE

Standard

BRIGHTNESS

80

INPUT SOURCE

DP

Game Setting

Picture

Settings

Audio

OSD Setup

Information

Brightness

Contrast

Gamma

Eco Adjustment

Color Temp.

Red

Green

Blue



OK



|                    |                             |  |
|--------------------|-----------------------------|--|
| Brightness         | 0-100                       | Backlight Adjustment.                        |
| Contrast           | 0-100                       | Contrast from Digital-register.              |
| Gamma              | 1.8 / 2.0 / 2.2 / 2.4 / 2.6 | Adjust Gamma.                                |
| Eco Adjustme<br>nt | Standard                    | Standard Mode.                               |
|                    | Text                        | Text Mode.                                   |
|                    | Internet                    | Internet Mode.                               |
|                    | Game                        | Game Mode.                                   |
|                    | Movie                       | Movie Mode.                                  |
|                    | Sports                      | Sports Mode.                                 |
|                    | Reading                     | Reading Mode.                                |
| Color Temp.        | Warm                        | Recall Warm Color Temperature from EEPROM.   |
|                    | Normal                      | Recall Normal Color Temperature from EEPROM. |
|                    | Cool                        | Recall Cool Color Temperature from EEPROM.   |
|                    | User                        | Restore Color Temperature from EEPROM.       |
| Red                | 0-100                       | Red gain from Digital-register.              |
| Green              | 0-100                       | Green gain from Digital-register.            |
| Blue               | 0-100                       | Blue gain from Digital-register.             |

|              |  |   |
|--------------|--|---|
| HDR          | Off  | Set the HDR profile according to your usage requirements.<br><br>Note:<br><br>When HDR is detected, the HDR option is displayed for adjustment.   |
|              | DisplayHDR   |   |
|              | HDR Picture  |   |
|              | HDR Movie  |   |
|              | HDR Game   |   |
| HDR Mode     | Off  | Optimized for the color and contrast of the picture, which will simulate showing the HDR effect.<br><br>Note:<br><br>When HDR is not detected, the HDR Mode option is displayed for adjustment. |
|              | HDR Picture  |   |
|              | HDR Movie  |   |
|              | HDR Game   |   |
| DCR          | Off  | Disable dynamic contrast ratio.   |
|              | On   | Enable dynamic contrast ratio.  |
| Color Space  | Panel Native   | Standard color space panel.   |
|              | sRGB   | sRGB Color space.   |
| LowBlue Mode | Off / Multimedia /<br>Internet / Office /<br>Reading | Decrease blue light wave by controlling color temperature.  |
| Image Ratio  | Full / Aspect  | Select image ratio for display.   |

**Note:**

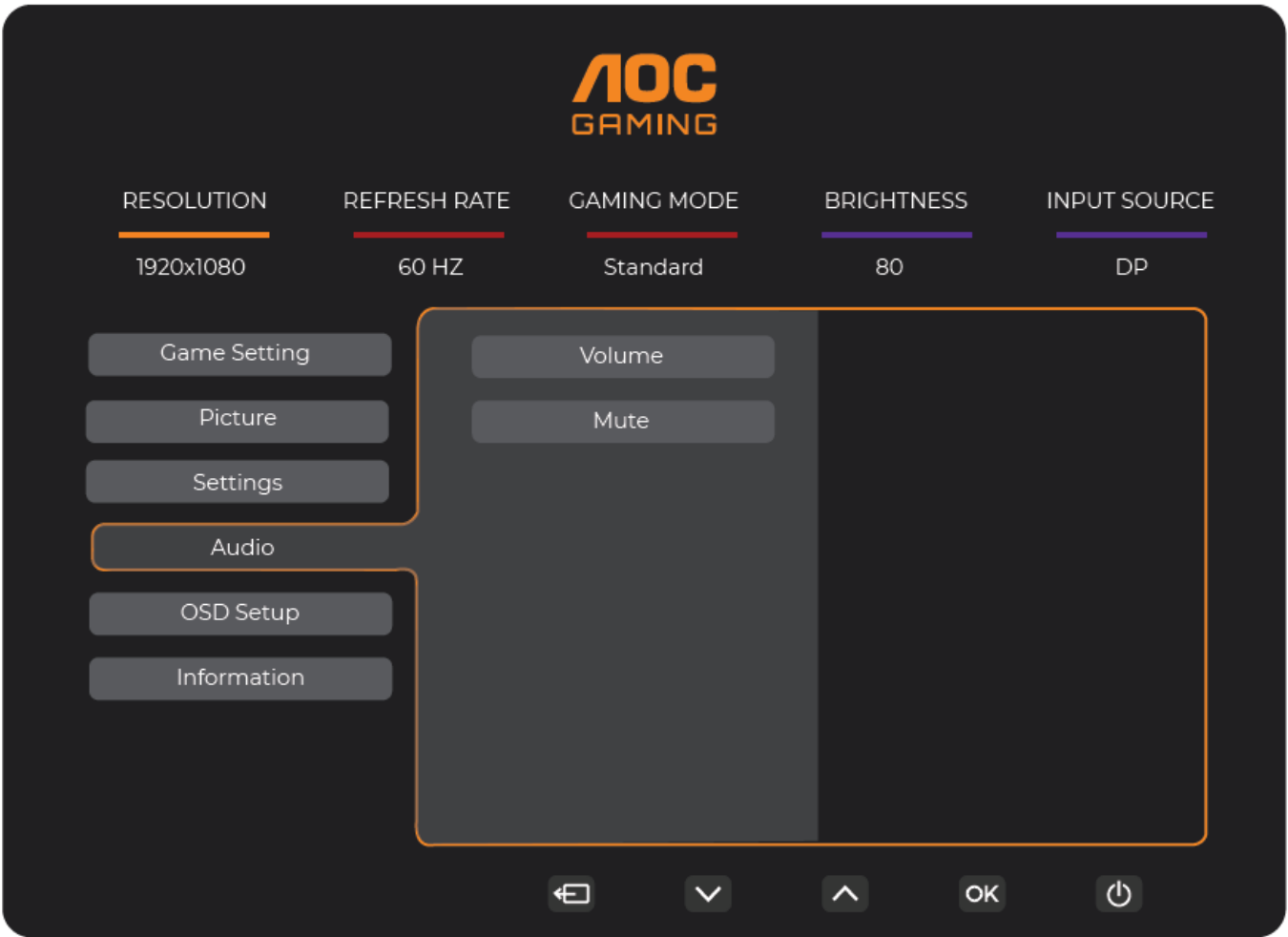
1. When “HDR” is enable, all the items except “HDR” under “Picture” cannot be adjusted.
2. When “HDR Mode” is enable, all the items except “HDR Mode”, “Brightness”, “DCR” cannot be adjusted.
3. When the “Color Space” is set to sRGB, all the items except “Color Space”, “Brightness”, “DCR” cannot be adjusted.
4. When the “Eco Adjustment” is set to Reading, “Color Temp.”, “Gaming Mode”, “Game Color”, “LowBlue Mode”, “MBR”, “MBR Sync” cannot be adjusted.

**Settings**



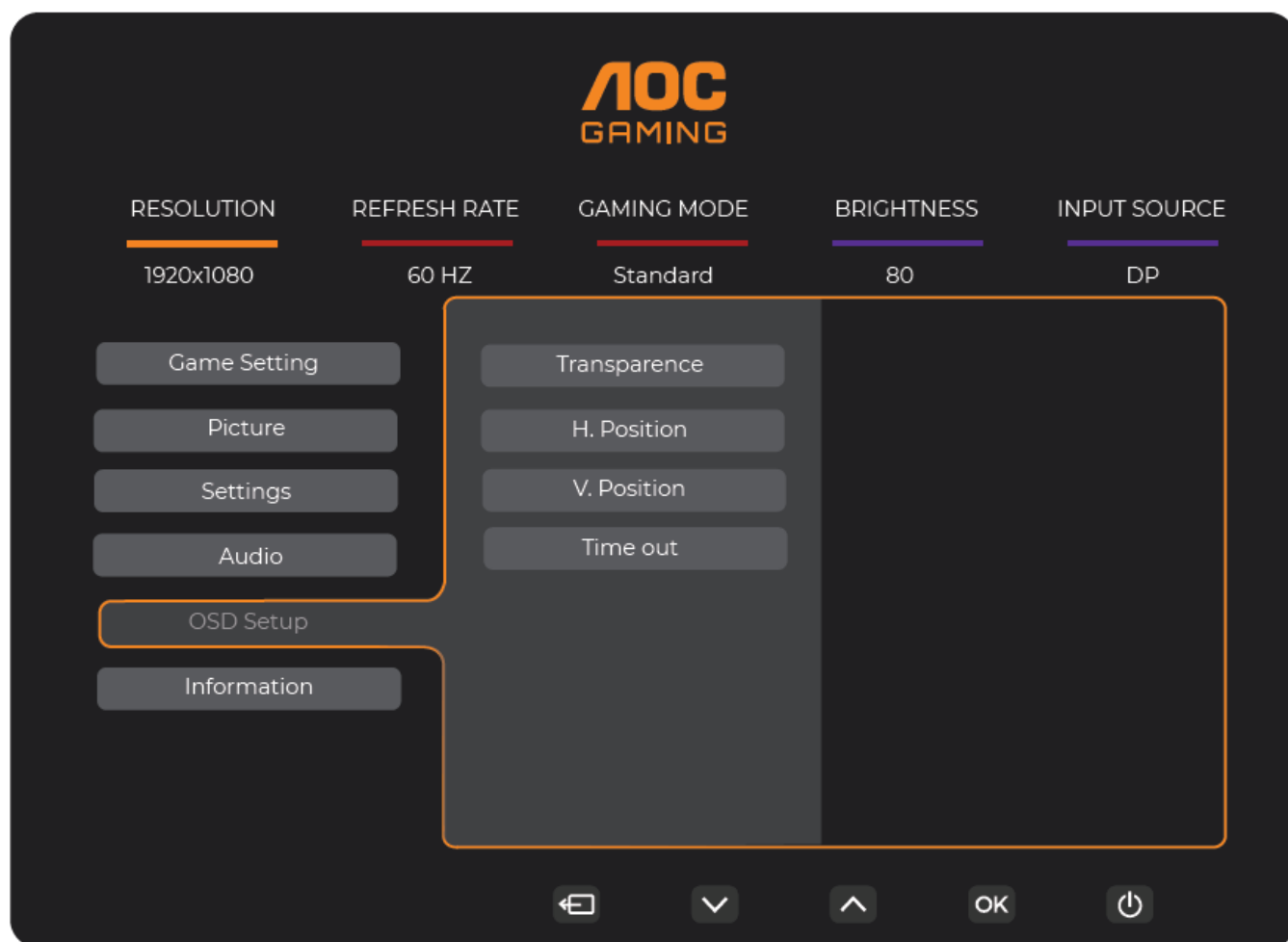
|                |                           |   |
|----------------|---------------------------|---|
| Language       |                           | Select the OSD language.  |
| Input Select   | Auto / HDMI1 / HDMI2 / DP | Select Input Signal Source.                                       |
| Break Reminder | Off / On                  | Break reminder if the user continuously works for more than 1hrs. |
| Off Timer      | 0-24 hrs                  | Select DC off time.   |
| DDC/CI         | No / Yes                  | Turn On/Off DDC/CI Support.                                       |
| Reset          | No / Yes                  | Reset the menu to default.  |

## Audio



|        |          |                    |
|--------|----------|--------------------|
| Volume | 0-100    | Volume Adjustment. |
| Mute   | Off / On | Mute the volume.   |

**OSD Setup**



|              |       |  |
|--------------|-------|--|
| Transparence | 0-100 | Adjust the transparence of OSD.        |
| H. Position  | 0-100 | Adjust the horizontal position of OSD. |
| V. Position  | 0-100 | Adjust the vertical position of OSD.   |
| Timeout      | 5-120 | Adjust the OSD Timeout.                |

## Information



RESOLUTION

1920x1080

REFRESH RATE

60 HZ

GAMING MODE

Standard

BRIGHTNESS

80

INPUT SOURCE

DP

Game Setting

Picture

Settings

Audio

OSD Setup

Information

Model Name

AOC 24G4X

Resolution

1920(H)x1080(V)

Refresh Rate

60HZ

HDR

SDR

Sync

Adaptive-Sync

Firmware Version

Vxx

Firmware Date

xxxxxxx

Serial Number

xxxxxxxxxxxx



OK



RESOLUTION

1920x1080

REFRESH RATE

60 HZ

GAMING MODE

Standard

BRIGHTNESS

80

INPUT SOURCE

DP

Game Setting

Picture

Settings

Audio

OSD Setup

Information

Model Name

AOC 27G4X

Resolution

1920(H)x1080(V)

Refresh Rate

60HZ

HDR

SDR

Sync

Adaptive-Sync

Firmware Version

Vxx

Firmware Date

xxxxxxx

Serial Number

xxxxxxxxxxxx



OK





## LED Indicator

| Status          | LED Color |
|-----------------|-----------|
| Full Power Mode | White     |
| Active-off Mode | Orange    |

## Troubleshoot

| Problem & Question   | Possible Solutions   |
|--|--|
| <b>Power LED Is Not ON</b>                                   | <p>Make sure the power button is ON and the Power Cord is properly connected to a grounded power outlet and to the monitor.</p>  |
| <b>No image on the screen</b>                                | <p>Is the power cord connected properly?</p> <p>Check the power cord connection and power supply. Is the video cable connected correctly?</p> <p>(Connected using the HDMI cable) Check the HDMI cable connection. (Connected using the DP cable) Check the DP cable connection.</p> <p>* HDMI/DP input is not available on every model.</p> <p>If the power is on, reboot the computer to see the initial screen (the login screen.)</p> <p>If the initial screen (the login screen) appears, boot the computer in the applicable mode (the safe mode for Windows 7/8/10) and then change the frequency of the video card.</p> <p>(Refer to the Setting the Optimal Resolution)</p> <p>If the initial screen (the login screen) does not appear, contact the Service Center or your dealer.</p> <p>Can you see "Input Not Supported" on the screen?</p> <p>You can see this message when the signal from the video card exceeds the maximum resolution and frequency that the monitor can handle properly.</p> <p>Adjust the maximum resolution and frequency that the monitor can handle properly.</p> <p>Make sure the AOC Monitor Drivers are installed.</p> |
| <b>Picture Is Fuzzy &amp; Has Ghosting Shadowing Problem</b> | <p>Adjust the Contrast and Brightness Controls.</p> <p>Press hot-key (AUTO) to auto-adjust.</p> <p>Make sure you are not using an extension cable or switch box. We recommend plugging the monitor directly to the video card output connector on the back.</p>  |

|   |  |
|---|--|
| <b>Picture Bounces, Flickers Or Wave Pattern Appears In The Picture</b> | <p>Move electrical devices that may cause electrical interference as far away from the monitor as possible.</p> <p>Use the maximum refresh rate your monitor is capable of at the resolution you are using.</p>  |
| <b>Monitor Is Stuck In Active Of f-Mode”</b>                            | <p>The Computer Power Switch should be in the ON position.</p> <p>The Computer Video Card should be snugly fitted in its slot. Make sure the monitor’s video cable is properly connected to the computer.</p> <p>Inspect the monitor’s video cable and make sure no pin is bent.</p> <p>Make sure your computer is operational by hitting the CAPS LOCK key on the keyboard while observing the CAPS LOCK LED. The LED should either turn ON or OFF after hitting the CAPS LOCK key.</p> |
| <b>Missing one of the primary colors (RED, GREEN, or BLUE)</b>          | <p>Inspect the monitor’s video cable and make sure that no pin is damaged.</p> <p>Make sure the monitor’s video cable is properly connected to the computer.</p>   |
| <b>Screen image is not centered or sized properly</b>                   | Adjust H-Position and V-Position or press hot-key (AUTO).  |
| <b>Picture has color defects (white does not look white)</b>            | Adjust RGB color or select desired color temperature.  |
| <b>Horizontal or vertical disturbances on the screen</b>                | Use Windows 7/8/10/11 shut-down mode to adjust CLOCK and FOCUS. Press hot-key (AUTO) to auto-adjust.   |
| <b>Regulation &amp; Service</b>   | <p>Please refer to Regulation &amp; Service Information which is in the CD manual or <a href="http://www.aoc.com">www.aoc.com</a> (to find the model you purchase in your country and to find Regulation &amp; Service Information in Support page.</p>  |

## Specification

### General Specification

**24G4X**

|                          |                               |  |                          |
|--------------------------|-------------------------------|--|--------------------------|
| Panel                    | Model name                    | 24G4X                                    |                          |
|                          | Driving system                | TFT Color LCD                            |                          |
|                          | Viewable Image Size           | 60.5 cm diagonal                         |                          |
|                          | Pixel pitch                   | 0.2745mm(H) x 0.2745mm(V)                |                          |
|                          | Video                         | HDMI Interface & DP Interface            |                          |
|                          | Display Color                 | 16.7M Colors                             |                          |
| Others                   | Horizontal scan range         | 30k~200kHz                               |                          |
|                          | Horizontal scan Size(Maximum) | 527.04mm                                 |                          |
|                          | Vertical scan range           | 48~180Hz                                 |                          |
|                          | Vertical Scan Size(Maximum)   | 296.46mm                                 |                          |
|                          | Optimal preset resolution     | 1920×1080@60Hz                           |                          |
|                          | Max resolution                | 1920×1080@180Hz                          |                          |
|                          | Plug & Play                   | VESA DDC2B/CI                            |                          |
|                          | Power Source                  | 100-240V~, 50/60Hz, 1.5A                 |                          |
|                          | Power Consumption             | Typical(default brightness and contrast) | 21W                      |
|                          |                               | Max. (brightness = 100, contrast =100)   | ≤37W                     |
|                          |                               | Standby Mode                             | ≤0.3W                    |
| Physical Characteristics | Connector Type                | HDMIx2/DP/Earphone out                   |                          |
|                          | Signal Cable Type             | Detachable                               |                          |
| Environmental            | Temperature                   | Operating                                | 0°C~40°C                 |
|                          |                               | Non-Operating                            | -25°C~55°C               |
|                          | Humidity                      | Operating                                | 10%~85% (Non-Condensing) |
|                          |                               | Non-Operating                            | 5%~93% (Non-Condensing)  |
|                          | Altitude                      | Operating                                | 0m~5000m (0ft~16404ft)   |
|                          |                               | Non-Operating                            | 0m~12192m (0ft~40000ft)  |



## 27G4X

|        |                               |  |     |
|--------|-------------------------------|--|-----|
| Panel  | Model name                    | 27G4X                                    |     |
|        | Driving system                | TFT Color LCD                            |     |
|        | Viewable Image Size           | 68.6 cm diagonal                         |     |
|        | Pixel pitch                   | 0.31125mm(H) x 0.31125mm(V)              |     |
|        | Video                         | HDMI Interface & DP Interface            |     |
|        | Display Color                 | 16.7M Colors                             |     |
| Others | Horizontal scan range         | 30k~200kHz                               |     |
|        | Horizontal scan Size(Maximum) | 597.6mm                                  |     |
|        | Vertical scan range           | 48~180Hz                                 |     |
|        | Vertical Scan Size(Maximum)   | 336.15mm                                 |     |
|        | Optimal preset resolution     | 1920×1080@60Hz                           |     |
|        | Max resolution                | 1920×1080@180Hz                          |     |
|        | Plug & Play                   | VESA DDC2B/CI                            |     |
|        | Power Source                  | 100-240V~, 50/60Hz, 1.5A                 |     |
|        |                               | Typical(default brightness and contrast) | 24W |

|                          |                   |  |                          |       |
|--------------------------|-------------------|--|--------------------------|-------|
|                          | Power Consumption | Max. (brightness = 100, contrast =100) |                          | ≤46W  |
|                          |                   | Standby Mode                           |                          | ≤0.3W |
| Physical Characteristics | Connector Type    | HDMIx2/DP/Earphone out                 |                          |       |
|                          | Signal Cable Type | Detachable                             |                          |       |
| Environmental            | Temperature       | Operating                              | 0°C~40°C                 |       |
|                          |                   | Non-Operating                          | -25°C~55°C               |       |
|                          | Humidity          | Operating                              | 10%~85% (Non-Condensing) |       |
|                          |                   | Non-Operating                          | 5%~93% (Non-Condensing)  |       |
|                          | Altitude          | Operating                              | 0m~5000m (0ft~16404ft)   |       |
|                          |                   | Non-Operating                          | 0m~12192m (0ft~40000ft)  |       |

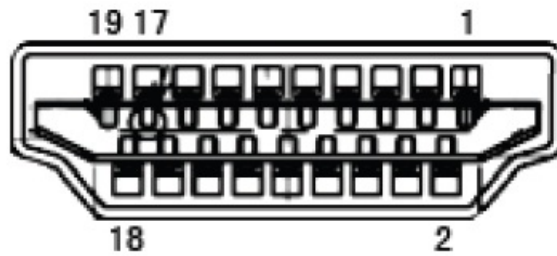


## Preset Display Modes

| STANDARD  | RESOLUTION(±1Hz) | HORIZONTAL<br>FREQUENCY(KHz) | VERTICAL<br>FREQUENCY(Hz) |
|-----------|------------------|------------------------------|---------------------------|
| VGA       | 640×480@60Hz     | 31.469                       | 59.94                     |
|           | 640×480@67Hz     | 35                           | 66.667                    |
|           | 640×480@72Hz     | 37.861                       | 72.809                    |
|           | 640×480@75Hz     | 37.5                         | 75                        |
|           | 640×480@100Hz    | 51.08                        | 99.769                    |
|           | 640×480@120Hz    | 61.91                        | 119.518                   |
| SD        | 720×576@50Hz     | 31.25                        | 50                        |
| SVGA      | 800×600@56Hz     | 35.156                       | 56.25                     |
|           | 800×600@60Hz     | 37.879                       | 60.317                    |
|           | 800×600@72Hz     | 48.077                       | 72.188                    |
|           | 800×600@75Hz     | 46.875                       | 75                        |
|           | 800×600@100Hz    | 62.76                        | 99.778                    |
|           | 800×600@120Hz    | 76.302                       | 119.972                   |
| XGA       | 1024×768@60Hz    | 48.363                       | 60.004                    |
|           | 1024×768@70Hz    | 56.476                       | 70.069                    |
|           | 1024×768@75Hz    | 60.023                       | 75.029                    |
|           | 1024×768@100Hz   | 80.448                       | 99.811                    |
|           | 1024×768@120Hz   | 97.551                       | 119.989                   |
| SXGA      | 1280×1024@60Hz   | 63.981                       | 60.02                     |
|           | 1280×1024@75Hz   | 79.976                       | 75.025                    |
| FHD       | 1920×1080@60Hz   | 67.5                         | 60                        |
|           | 1920×1080@120Hz  | 137.283                      | 120.003                   |
| FHD(DP)   | 1920×1080@144Hz  | 162.003                      | 144.003                   |
| FHD       | 1920×1080@180Hz  | 199.803                      | 180.003                   |
| MAC MODES |                  |                              |                           |
| SVGA      | 832×624@75Hz     | 49.725                       | 74.551                    |
| DOS       | 720×400@70Hz     | 31.469                       | 70.087                    |

**Note:** According to the VESA standard, there may be a certain error (+/-1Hz) when calculating the refresh rate (field frequency) of different operating systems and graphics cards. In order to improve compatibility, the nominal refresh rate of this product has been rounded off. Please refer to the actual product.

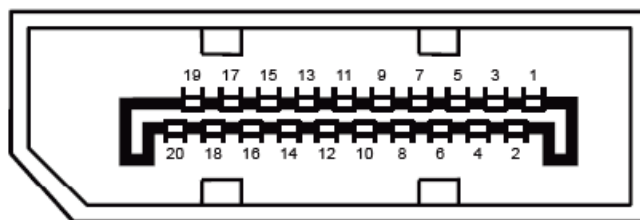
## Pin Assignments



### 19-Pin Color Display Signal Cable

| Pin No. | Signal Name        | Pin No. | Signal Name               | Pin No. | Signal Name     |
|---------|--------------------|---------|---------------------------|---------|-----------------|
| 1.      | TMDS Data 2+       | 9.      | TMDS Data 0-              | 17.     | DDC/CEC Ground  |
| 2.      | TMDS Data 2 Shield | 10.     | TMDS Clock +              | 18.     | +5V Power       |
| 3.      | TMDS Data 2-       | 11.     | TMDS Clock Shield         | 19.     | Hot Plug Detect |
| 4.      | TMDS Data 1+       | 12.     | TMDS Clock-               |         |                 |
| 5.      | TMDS Data 1Shield  | 13.     | CEC                       |         |                 |
| 6.      | TMDS Data 1-       | 14.     | Reserved (N.C. on device) |         |                 |
| 7.      | TMDS Data 0+       | 15.     | SCL                       |         |                 |
| 8.      | TMDS Data 0 Shield | 16.     | SDA                       |         |                 |

### 20-Pin Color Display Signal Cable



| Pin No. | Signal Name   | Pin No. | Signal Name     |
|---------|---------------|---------|-----------------|
| 1       | ML_Lane 3 (n) | 11      | GND             |
| 2       | GND           | 12      | ML_Lane 0 (p)   |
| 3       | ML_Lane 3 (p) | 13      | CONFIG1         |
| 4       | ML_Lane 2 (n) | 14      | CONFIG2         |
| 5       | GND           | 15      | AUX_CH(p)       |
| 6       | ML_Lane 2 (p) | 16      | GND             |
| 7       | ML_Lane 1 (n) | 17      | AUX_CH(n)       |
| 8       | GND           | 18      | Hot Plug Detect |
| 9       | ML_Lane 1 (p) | 19      | Return DP_PWR   |
| 10      | ML_Lane 0 (n) | 20      | DP_PWR          |

## Plug and Play

### *Plug & Play DDC2B Feature*

This monitor is equipped with VESA DDC2B capabilities according to the VESA DDC STANDARD. It allows the monitor to inform the host system of its identity and, depending on the level of DDC used, communicate additional information about its display capabilities. The DDC2B is a bi-directional data channel based on the I2C protocol. The host can request EDID information over the DDC2B channel.



[WWW.AOC.COM](http://WWW.AOC.COM)

©2023 AOC. All rights reserved

---

**Documents / Resources**





[AOC GAMING 24G4X LED Monitor 180Hz FHD IPS Display](#) [pdf] User Manual  
24G4X LED Monitor 180Hz FHD IPS Display, 24G4X, LED Monitor 180Hz FHD IPS Display, Mo  
nitor 180Hz FHD IPS Display, FHD IPS Display, IPS Display

## References

- [Homepage | AOC Monitors](#)
- [User Manual](#)

[Manuals+](#), [Privacy Policy](#)

This website is an independent publication and is neither affiliated with nor endorsed by any of the trademark owners. The "Bluetooth®" word mark and logos are registered trademarks owned by Bluetooth SIG, Inc. The "Wi-Fi®" word mark and logos are registered trademarks owned by the Wi-Fi Alliance. Any use of these marks on this website does not imply any affiliation with or endorsement.