

Anywii P100A Security Camera



Anywii P100A Security Camera User Manual

[Home](#) » [Anywii](#) » Anywii P100A Security Camera User Manual 

Contents

- [1 Anywii P100A Security Camera](#)
- [2 Preparation](#)
- [3 Wi-Fi remote monitoring operation](#)
- [4 Common issues and notices](#)
- [5 Notices for memory card](#)
- [6 FCC STATEMENT](#)
- [7 Documents / Resources](#)
 - [7.1 References](#)



Anywii P100A Security Camera



Thanks for buying this camera, it is designed as extremely portable, making It can be used In different applications. aim to bring you a convenient, safe daily life, please according to this user guide set your camera correctly.

Preparation

Reset Camera

Reset method: Long touch the 'reset' button for 5 seconds, complete after hearing a beep, and waiting for the restart

APP Download

Scan the QR code to download APP 'Botslab' Android smartphones can search for 'Botslab' in Google Play to download. iPhone can search the 'Botslab' in the APP store to download.



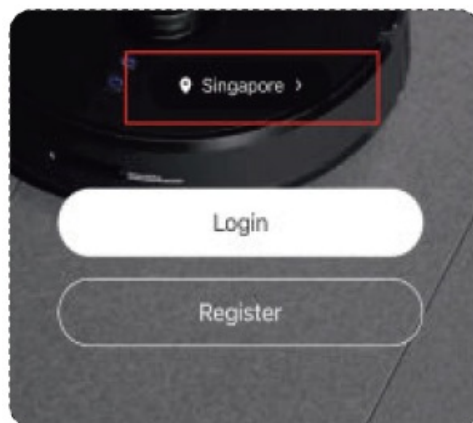
Reset button



Sign For Your Account

Open the downloaded APP, and click. 'Register', choose sign for by phone number or email, after entering the verify code and password set, sign for completed.

Notices: You should choose where you are located correctly when you login,



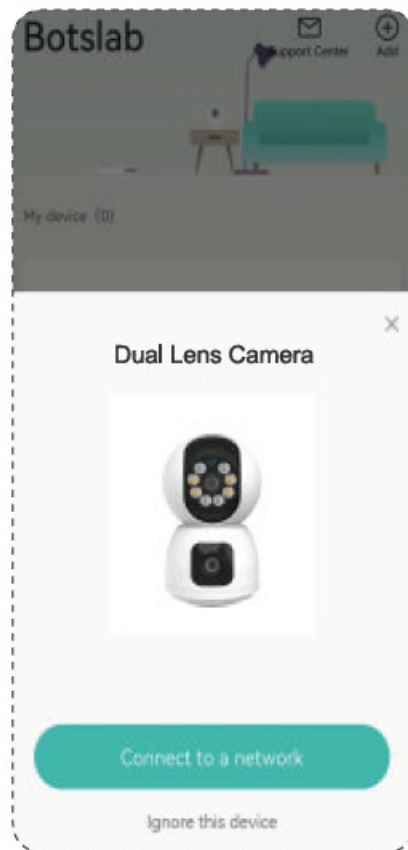
as below picture

Wi-Fi remote monitoring operation

Guide for Android Phone

1. After preparation is finished, open the APP 'Botslab', it will search the device nearby automatically, and pop-ups shown as the picture at the right.
*if no pop-ups in 'a', follow as below 'b'.
2. Click 'Start to connect'.
3. Choose Wi-Fi and enter Password to connect, click 'Next Step' . Wi-Fi should be 2.4GHz and without any marks.
4. Click 'Connect' to hotspot of device.

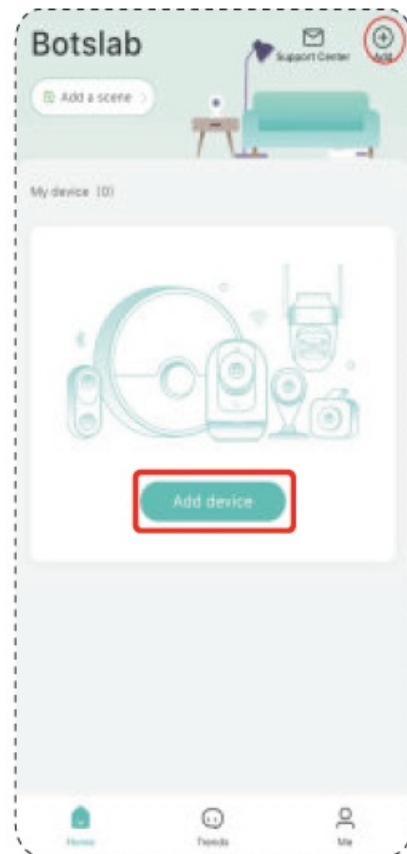
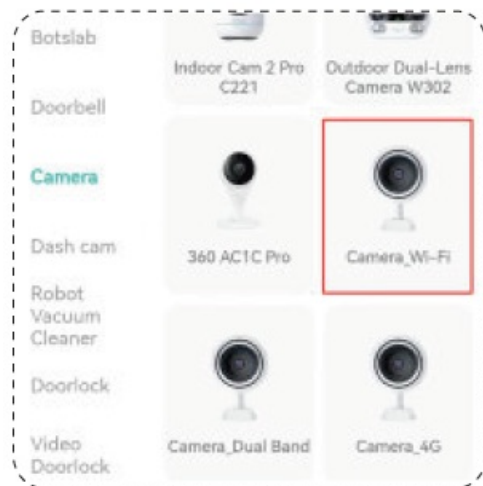
5. Waiting for network set, able to start to use, once it shows 'set succeed'



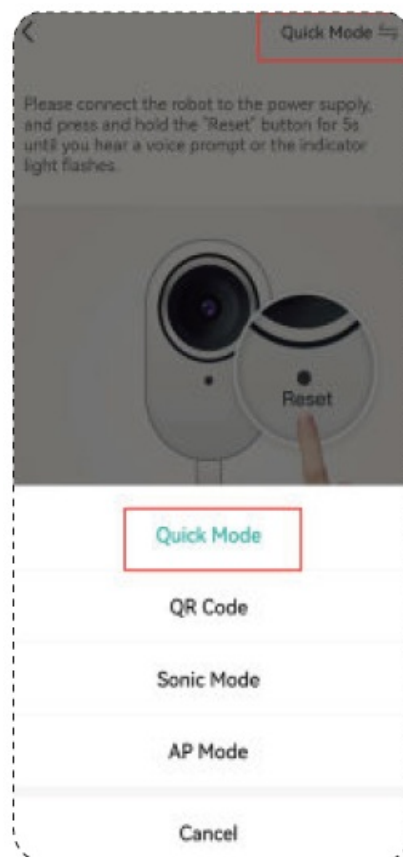
Guide for ios/ iPhone

Open the APP 'Botslab'

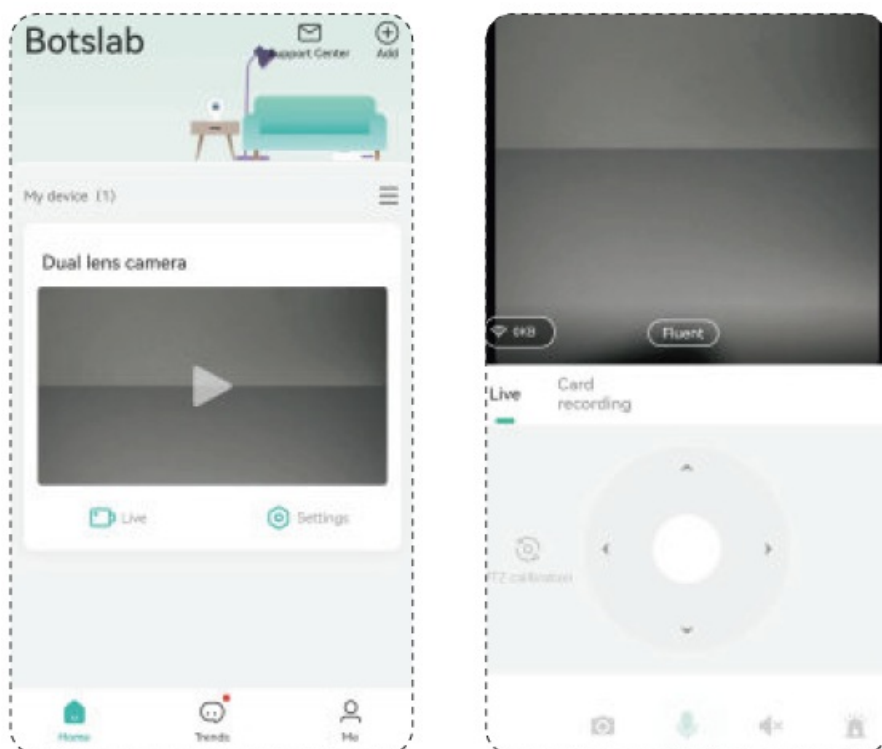
1. Click 'Add' and then scan the QR code at the bottom of the device, as picture on the right.
2. Click 'Add ' at the right top corner to select the device, as picture on the right. Choose 'Camera ' _ 'Camera Wi-Fi',as shown below.



3. At the right top corner, the default mode of connecting the network should be 'Wi-Fi Quick connect'. (Botslab supports two mode: 'Wi-Fi Quick Connect' and 'QR Code Connect'), make sure it shows 'Wi-Fi Quick Connect' and click 'Next Step' as right picture.
4. Choose Wi-Fi and enter Password to connect, click 'Next Step' . Wi-Fi should be 2.4GHz and without any marks.
5. Click' Go to connect to Wi-Fi then jump to the Wi-Fi set of the phone, choose to connect to Wi-Fi called 'FC** _***** _****', once connected the Wi-Fi, back to Botslab, and wait for the setting. Once it shows 'set succeed', then able to start to use.



- If the connection fails, please reset the camera, and according to the guide operate again.



Common issues and notices

1. When logging in on Botslab, please make sure to select the right location of the camera at. Otherwise, possible to not be able to add a device or always offline.
2. Camera only supports 2.4G Wi-Fi, do not choose 5G Wi-Fi.

3. Camera can be activated by only one account, needs to be cancelled to be activated by other accounts.
4. Camera sharing: Camera images can be shared to 5 accounts at the most, and can not watch at the same time.

Notices for memory card

1. Insert TF card when camera is off-power, notice the insert direction, then power up the camera.
2. Support SD card format: FAT32, recommends formatting the SD card after the connection succeeds.
3. Record will overwrite automatically when memory is full.
4. The max memory capacity is 32GB.

FCC STATEMENT

This device complies with part 15 of the FCC Rules. Operation is subject to the following two conditions:

1. This device may not cause harmful interference, and
2. this device must accept any interference received, including interference that may cause undesired operation.

Any Changes or modifications not expressly approved by the party responsible for compliance could void the user's authority to operate the equipment.

Note: This equipment has been tested and found to comply with the limits for a Class B digital device, according to part 15 of the FCC Rules.


These limits are designed to provide reasonable protection against harmful interference in a residential installation. This equipment generates uses and can radiate radio frequency energy and, if not installed and used under the instructions, may cause harmful interference to radio communications.

However, there is no guarantee that interference will not occur in a particular installation. If this equipment does cause harmful interference to radio or television reception, which can be determined by turning the equipment off and on, the user is encouraged to try to correct the interference by one or more of the following measures:

- Reorient or relocate the receiving antenna
- Increase the separation between the equipment and receiver.
- Connect the equipment to an outlet on a circuit different from that to which the receiver is connected.
- Consult the dealer or an experienced radio/TV technician for help.

The equipment complies with FCC Radiation exposure limits set forth for uncontrolled environment. This equipment should be installed and operated with a minimum distance of 20cm between the radiator and your body.

Documents / Resources

	Anywii P100A Security Camera [pdf] User Manual P100A Security Camera, P100A, Security Camera, Camera
---	---

References

- [User Manual](#)

[Manuals+](#), [Privacy Policy](#)

This website is an independent publication and is neither affiliated with nor endorsed by any of the trademark owners. The "Bluetooth®" word mark and logos are registered trademarks owned by Bluetooth SIG, Inc. The "Wi-Fi®" word mark and logos are registered trademarks owned by the Wi-Fi Alliance. Any use of these marks on this website does not imply any affiliation with or endorsement.