




ANYWHERE A15 Android 9.0 TV Box User Guide

[Home](#) » [AnyWhere](#) » ANYWHERE A15 Android 9.0 TV Box User Guide 

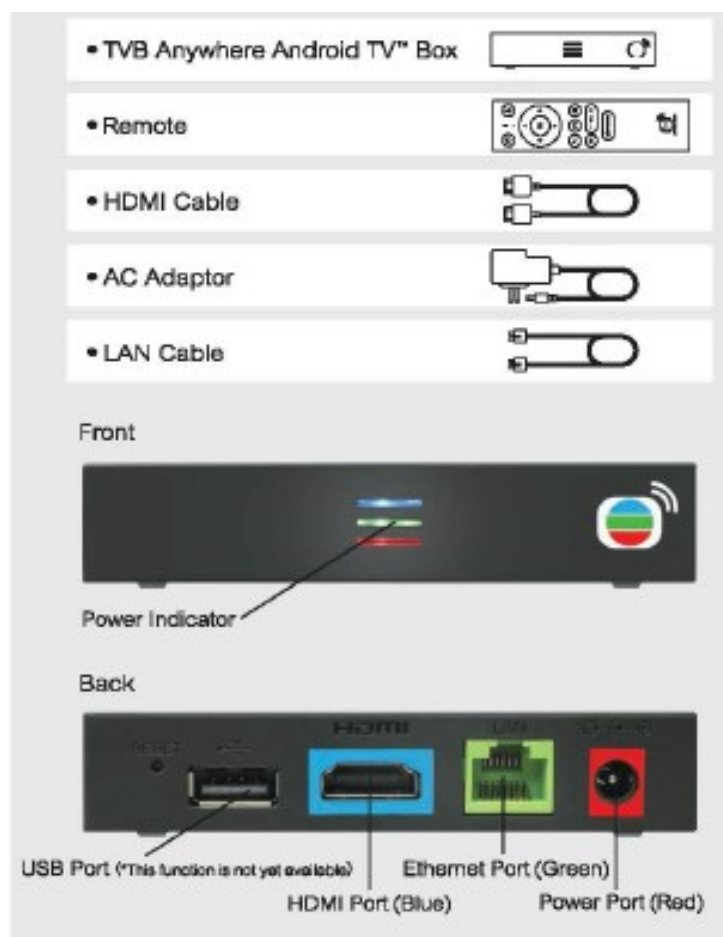
Contents

- [1 ANYWHERE A15 Android 9.0 TV Box User Guide](#)
- [2 Product Overview](#)
- [3 Remote](#)
- [4 Installation Guide](#)
- [5 FCC Radiation Exposure Statement:](#)
- [6 Network Settings](#)
- [7 Pairing with IVB Anyvwhere Account](#)
- [8 Specification](#)
- [9 Maintenance & Repair](#)
- [10 Warning and Caution](#)
- [11 Caution:](#)
- [12 Read More About This Manual & Download PDF:](#)
- [13 Documents / Resources](#)
- [14 Related Posts](#)

ANYWHERE A15 Android 9.0 TV Box User Guide



Product Overview



Remote



Installation Guide



FCC Radiation Exposure Statement:

This equipment complies with FCC radiation exposure limits set forth for an uncontrolled environment. This equipment should be installed and operated with a minimum distance of 20mm between the radiator & your body. This transmitter must not be co-located or operating in conjunction with any other antenna or transmitter. This equipment has been tested and found to comply with the limits for a class B digital device, pursuant to part 15 of the FCC Rules. These limits are designed to provide reasonable protection against harmful interference in a residential installation.

This equipment generates, uses and can radiate radio frequency energy and, if not installed and used in accordance with the instructions, may cause harmful interference to radio communications. However, there is no guarantee that interference will not occur in a particular installation. If this equipment does cause harmful interference to radio or television reception, which can be determined by turning the equipment off and on, the user is encouraged to try to correct the interference by one or more of the following measures:

- Reorient or relocate the receiving antenna.
- Increase the separation between the equipment and receiver.
- Connect the equipment into an outlet on a circuit different from that to which the receiver is connected.
- Consult the dealer or an experienced radio/TV technician for help.

This device complies with part 15 of the FCC Rules. Operation is subject to the following two conditions:

1. This device may not cause harmful interference, and
2. this device must accept any interference received, including interference that may cause undesired operation.

Any changes or modifications not expressly approved by the party responsible for compliance could void the user's authority to operate the equipment]

Network Settings

TVB Anywhere Android TV™ Box can connect to your wired or wireless network.

1. Wired network: Connect the LAN Cable with your Android TV™ Box, then the wired network will be connected automatically.
2. Wireless network: Please ensure Android TV™ Box is within the range of your Wi-Fi router. Enter Wi-Fi settings to select your network.

Suggestion: Choose a Wi-Fi network with strong signal



Pairing with IVB Anyvwhere Account

Scan the QR code or enter the web link displayed on your TV Screen

1. Login with the TVB Anywhere account
2. Go to "Pair Now"

3. Enter the pairing code displayed on your

TV screen and press “Confirm” You will be able to use your TVB Anywhere

Android TV™ Box once you have successfully paired with your account. Please click e “OK” to refresh pairing code if the code has been expired or unable to display the code.

Specification

Brand : IVB Anywhere Power : 121/ 1A

Model : A 15 Size :93.5x96x 211 mm

CPU : ARM AmlaglcCortsxA53 1.5GHz Weight : 160g

Operallcn SystBrn : Android 9.0 Color : Blook

RAM : DIJR3 2GB Manufacturer

Stillrage : 8GB Hybroad 'llslon (Horg Kong) TechnologyCo.L1d

Po~ & Intm1ace : HDMI 2.0, use 2.0 Manufactu~ng O~ln : CNna

Maintenance & Repair

months hardware 98Nica “””””ty. Subject ID terrm end condilioos of tile agreement, the lolll7Nings are not covered by the warranty :

- Damages caused by use of anottler product or ancillary a peripheral equipment
- Darreges caused by accident, abuse, misuse, liquid contact, fire, aarthquake, act of God a: olher axlllmlll cause
- Damages caused by operating 1he playsr in violation of 1he user manual, tile technical specifications or othc,- published ~idelines
- Damages caused by service 17,’ anyone unauthorised by us If the serial number has been removed a defaced from the play,r

Warning and Caution



To avoid the risk of causing any electric shock or fire, you should refrain from repairing the Android TV” ot replacing any parts inside. Please contact Customer Service for professional advice.



Android TV”” should at#ays be placed in a dry environment. In severe weather and 1hunderstorms, you should disconnect Android TV” from the electricity supply, and also from your wired network if 1his is in use.



Recycling Symbol This symbol indicates that you are obliged to adhere to ocal regulations for end-of-life

(EOL) disposal of this Drone’ and/or its battery, and to separate then from your household waste. When this product has reamed is eft of life, you should take it to a designated beal collceticci point whin it w ll be disposed of appropriately and recycled.This will help CU Se(VB natural resources and ensure that it is handled and recycled correctly, in order to protect public health and the environment




Caution:

1. The device for operation in the band 5150-5250 M-lz is only for indoor use to reduce the potential for harmful interference to co-channel mobile satellite systems;
2. For devices with integrated arienna(s),the maximum antenna gain permitted fro devices in the bands 5250-

5350 MHz and 5470-5725 MHz shall be such that the equipment still complies with the e.i.r.p. limits (3) for devices with integrated antenna (s), the maximum antenna gain permitted for devices in the band 5725-5850 MHz shall be such that the equipment still complies with the e.i.r.p. limits specified for point-to-point and non-point-to-point operation as appropriate ;and DFS(Dynamic Frequency Selection) products that operate in the bands 5250-5350 MHz, 5470-5500 MHz, and 5550-5725 MHz.

Read More About This Manual & Download PDF:

Documents / Resources

	ANYWHERE A15 Android 9.0 TV Box [pdf] User Guide A15, 2AWYC-A15, 2AWYCA15, A15, Android 9.0 TV Box, 9.0 TV Box, Android TV Box, A15, Box
---	---