



ANYLOAD FSP Series Floor Scale Installation Guide

[Home](#) » [ANYLOAD](#) » ANYLOAD FSP Series Floor Scale Installation Guide 

Contents

- [1 ANYLOAD FSP Series Floor Scale Installation Guide](#)
- [2 Safety Recommendations:](#)
- [3 Load Cell Feet Installation:](#)
- [4 Level Bubble Adjustment:](#)
- [5 Corner Adjustment & Tuning the J04EA Junction Box:](#)
- [6 Cautions:](#)
- [7 Read More About This Manual & Download PDF:](#)
- [8 Documents / Resources](#)

ANYLOAD FSP Series Floor Scale Installation Guide



Safety Recommendations:

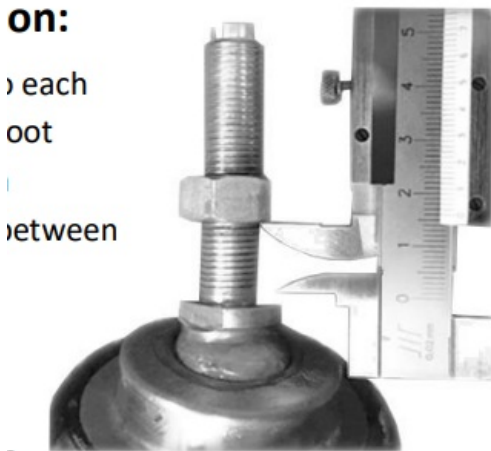
- Please read this manual carefully before operating the scale
- Operate the scale in strict accordance with this manual and keep this manual for future reference
- Observe the safety practices while handling this unit due to its heavy self weight
- Unplug power supply during installation, maintenance or level bubble adjustment
- In order to have high accuracy results, the operating temperature should be within the requirements before switching on the scale
- Avoid using or storing the scale in hazardous or explosive environments

Load Cell Feet Installation:

Mount the AMF load cell foot to each 563YH load cell. Turn the AMF foot clockwise to tighten and leave a clearance of around 15-20mm between the jam nut and the fixed nut
Install the floor scale into a levelled ground and make sure all the feet are fully touching the ground.

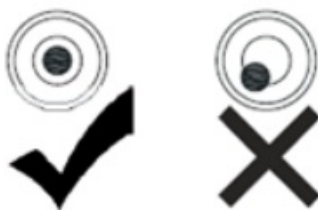
on:

each
foot
between



Level Bubble Adjustment:

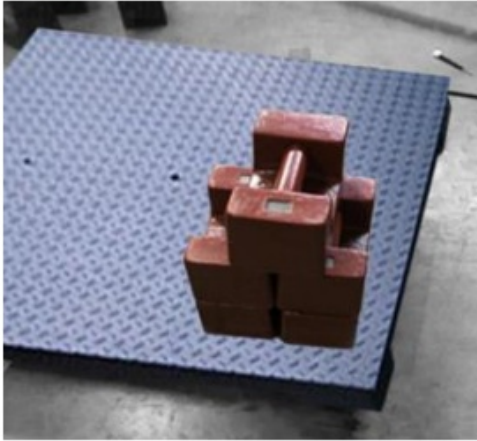
Adjust each foot using a flat screwdriver by turning it clockwise or counter clockwise until the level bubble remains in the center. Make sure all feet are fully touching the ground.



Corner Adjustment & Tuning the J04EA Junction Box:

Install the weighing indicator and use the output terminal of the J04EA junction box to connect your indicator. Calibrate the scale using a test weight of at least 75% of the maximum capacity of the scale as recommended (e.g. if 1Klb max capacity, use at least 750 lbs test weight). Refer to the manual of your indicator in calibrating the scale.

After calibrating, place a test weight weighing around 1/3 of the maximum capacity of the scale in each corner and take note each reading including the reading at the center of the scale (e.g if 1Klb max capacity, use around 325 lbs test weight).



Identify which corner has the highest or lowest reading to adjust its corresponding potentiometer at the J04EA junction box. If lowest reading is selected, adjust its corresponding potentiometer clockwise to increase its reading making closer to the reading of at the center. Or, if the highest reading is selected, adjust its corresponding potentiometer counter clockwise. Repeat this tuning process until you reach all readings from the corners and of at the center are almost identical

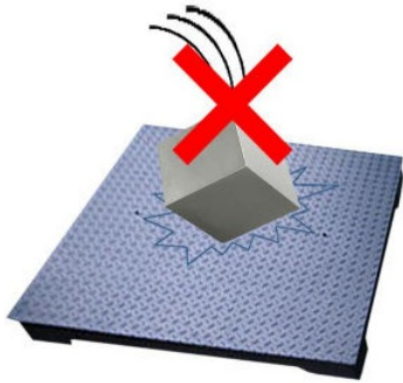


Recalibrate the scale using a test weight of at least 75% of the maximum capacity of the scale as recommended (e.g if 1Klb max capacity, use at least 750 lbs test weight).



Cautions:


The scale structure and several points overloading protection design support the high accuracy of floor scale.



The occasional overloading may not damage the scale body but the accuracy of overloading range may not be achieved. If scale damage is caused by overloading, it shall not be covered by warranty

Read More About This Manual & Download PDF:

Documents / Resources

	<p>ANYLOAD FSP Series Floor Scale [pdf] Installation Guide FSP Series Floor Scale, FSP Series, Floor Scale, Scale</p>
---	--