

ANYKIT
NTC30L
Inspection Camera



ANYKIT NTC30L Inspection Camera User Manual

[Home](#) » [ANYKIT](#) » ANYKIT NTC30L Inspection Camera User Manual 

Contents

- 1 ANYKIT NTC30L Inspection Camera
- 2 READ BEFORE USE
- 3 KNOW YOUR PRODUCT
- 4 PRODUCT SPECIFICATIONS
- 5 OPERATING INSTRUCTIONS
- 6 Confirming Guide
- 7 APP INSTRUCTIONS
- 8 SAFETY INSTRUCTIONS
- 9 MAINTENANCE
- 10 TROUBLESHOOTING
- 11 WARRANTY
- 12 CONTACT
- 13 Documents / Resources
 - 13.1 References
- 14 Related Posts

ANYKIT

ANYKIT NTC30L Inspection Camera



READ BEFORE USE

Using this product signifies that you have read, understand, and adopted the terms and conditions here.

Read the following documents before signing.

1. Safety Guidelines
2. Quick Start Guide
3. I-lær Manual

It is recommended to watch all tutorial videos on the official Anyit website and read the safety guidelines before using. Prepare for your first use by reviewing the quick start guide and refer to this user manual for more information.

Tutorials

- Scan the QR code to watch NTC30L/NTC30D tutorial videos, which safely demonstrate to the NTC30L/NTC30D.

ONLINE MANUAL

- Scan this QR code to get the manual in which can be enlarged and viewed on your mobile device



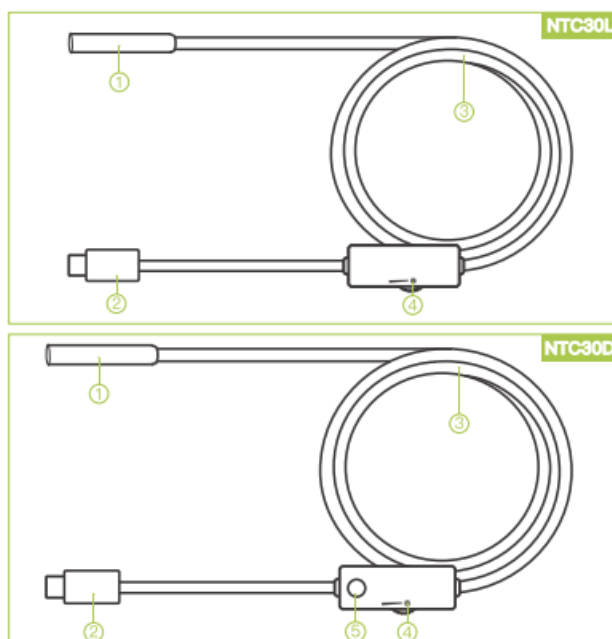
ABOUT ANKIT

Anyklt is a trendy and practical tool brand. We focus on simplicity and ease of use, providing people with convenience in their everyday lives. Our products include otoscopes, endoscopes, and a variety of house hold tmls to enable DIY enthusiasts to a-nbraæ creativity and convenience



Follow Anyklt on Amazon for More




KNOW YOUR PRODUCT



1. camera
2. USB-C Connector
3. Cable
4. LED Adjustment
5. Camara Switch Button

PRODUCT SPECIFICATIONS

Lens Type		Single Lens	Dual Lens
Camera Diameter		8.5mm	8mm
Camera Lights		8 Adjustable LED Lights	8+1 Adjustable LED Lights
Device Compatibility		Android & iOS (Type-C)	
Waterproof Rating		IP67	
Focal Distance	A Camera	30–100mm	30–100mm
	B Camera		20–50mm

Magnet	Hook	Mirror (Only comes with Single Lens)
		

OPERATING INSTRUCTIONS

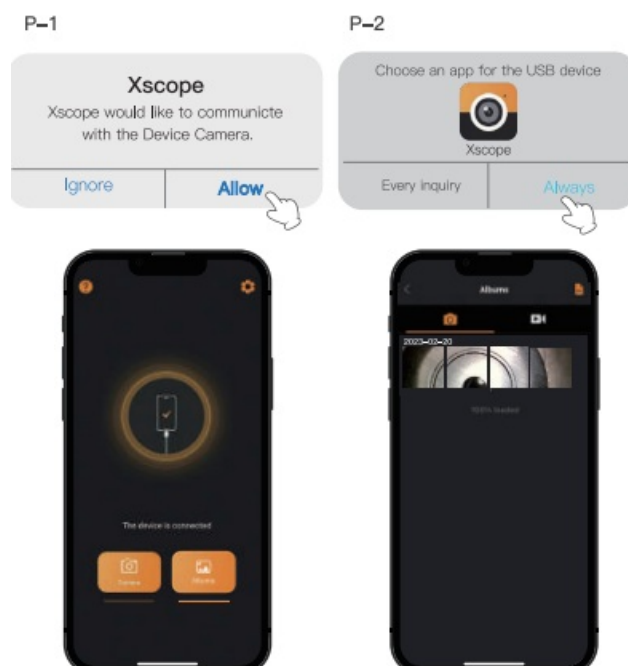
DOWNLOADING THE APP

- Use the inspection camera with the app. You can download it from Apple Store/Google Play or scan the QR codes below.

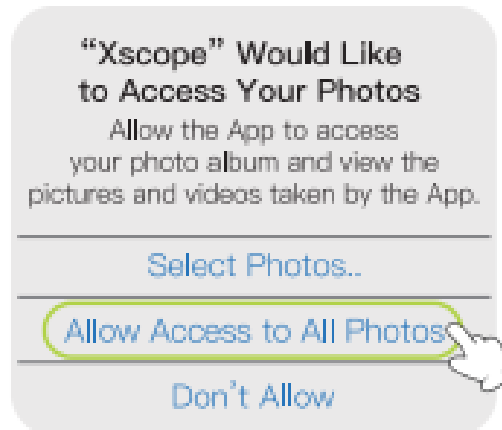


Confirming Guide

- Insert the type—C connector of the inspection camera into your smart device (Suitable for Apple devices with type—C interface, such as iPhone15/15*0/15Plus/15ProMax MacBook Pro 2020, iPad Pro 2020, iPad air 4)
- You'll receive a notification and click "Allow" to use it (P-1 for ios)
- You'll receive a notification and click "Always" to use it (P-2 for Android)

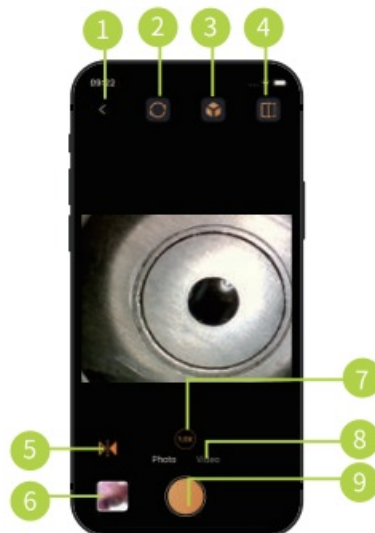


- The camera starts to ue,o more
- Albums. Review the photos/ videos you take
- Setting, center into the app settings



- If you do not grant Xscepto photo to your photo library, It will result In the inability to save photos or videos.

APP INSTRUCTIONS



1. Back
2. Rotate image 90°
3. Color/Black and white image
4. Split Screen mode
5. Screen Mirroring
6. Albums
7. Zoom (pinch with two fingers)
8. photo video Switch
9. Take a photo/video

SAFETY INSTRUCTIONS

WARNING! Please read all safety warnings and instructions before using this product.

- Failure to follow the warnings and Instructions may result in electric shock, fire, or serious injury.

- Keep the tool dry, clean, free from oil, water, gas or other corrosion-causing materials.
- Keep your work area clean and well-lit. This appliance is not intended for use by persons with limited physical, sensory, or mental abilities.
- This appliance is not intended for medical use or personal inspection.
- Keep bystanders, and children away while operating the tool. Do not overreach, keep proper footing and balance at all times.

MAINTENANCE

- Always keep the camera lens clean
- should any other components not mentioned need to be replaced
- please contact our customer service agents,

TROUBLESHOOTING

Troubleshooting (APP)	Troubleshooting (Camera)
Does not respond when camera connected to the phone.	Camera is hot
(1) Please confirm whether the phone has the OTG function on. (Android) (2) Please confirm whether the plug is securely in place. Try to plug and unplug It several times.	It is usual for the camera to heat up, especially when the LED light is at its highest brightness, but it does not affect normal use or service life.
Not displaying pictures	Image blur
Check whether the camera light is on, if it is off, or if the interface is not in good contact, please re-plug it.	The best imaging focal length of the product is: 3cm-10cm, please adjust the distance from the object you are looking at, or clean the front of the camera with a clean alcohol cloth.
Automatically open other APP	The image appears to be stuck or paused.
Reason: This APP has been set to open USB device by default before. Solution 1: Go to Settings -application information-select this APP, find the default option-click Clear default.	Sometimes the app can get stuck if the mobile device battery is low. Keep it above 20%.

WARRANTY

30-Day Guarantee	We will give you a full refund if you are not satisfied with the product.
One-Year Warranty	We offer a limited warranty that commences from the date of purchase of the product.



- visit anykit.com and scan the QR for more details

CONTACT

If you have any questions or concerns about your product, please contact our Customer & Support Team

- 1-[877-888-7979](tel:877-888-7979)
- support@anykit.com
- www.anykit.com
- @anykit
- @anykit
- Facebook Messenger

Documents / Resources

	ANYKIT NTC30L Inspection Camera [pdf] User Manual NTC30D, NTC30L, NTC30L Inspection Camera, NTC30L, Inspection Camera, Camera
---	--

References

- [User Manual](#)

Manuals, Privacy Policy

This website is an independent publication and is neither affiliated with nor endorsed by any of the trademark owners. The "Bluetooth®" word mark and logos are registered trademarks owned by Bluetooth SIG, Inc. The "Wi-Fi®" word mark and logos are registered trademarks owned by the Wi-Fi Alliance. Any use of these marks on this website does not imply any affiliation with or endorsement.