



ANYKIT AN150P 360 Degree Articulating Borescope Installation Guide

[Home](#) » [ANYKIT](#) » ANYKIT AN150P 360 Degree Articulating Borescope Installation Guide 



360° Articulating Borescope



Model No.: AN150P

Contents

- 1 READ BEFORE USE
- 2 OVERVIEW
- 3 SAFETY INSTRUCTION
- 4 ABOUT ANYKIT
- 5 KNOW YOUR PRODUCT
- 6 SPECIFICATIONS
- 7 PREPARATION & SETUP
- 8 DISPLAY
- 9 SETTINGS
- 10 CHANGE THE TEMPERATURE UNITS
- 11 LED BRIGHTNESS ADJUSTMENT
- 12 ADJUSTABLE LENS FIELD OF VIEW
- 13 SWITCH BETWEEN PHOTO & VIDEO RECORDING
- 14 IMAGE PLAYBACK
- 15 TF CARD INSERTION AND REMOVAL GUIDE
- 16 COPY PHOTO AND VIDEO FILES TO COMPUTER
- 17 MAINTENANCE
- 18 TROUBLESHOOTING
- 19 WARRANTY
- 20 CUSTOMER SUPPORT
- 21 Documents / Resources
 - 21.1 References
- 22 Related Posts

READ BEFORE USE

By using this product, you signify that you have read, understand, and accept the terms and conditions here.
Read the following documents before using.

1. Safety Guidelines
2. Quick Start Guide
3. User Manual

It is recommended to watch all tutorial videos on the official Anykit website and read the safety guidelines before using.

Prepare for your first use by reviewing the quick start guide and refer to this user manual for more information.

Video Tutorials

Scan the QR code to watch the AN150P tutorial videos, which demonstrates how to use the AN150P safely.



<https://qrs.ly/wwf4i3p>

ONLINE MANUAL

Scan this QR code to get the manual in PDF, which can be enlarged and viewed on your mobile device.



<https://qrs.ly/vof1uvj>

OVERVIEW

Features

- 5-inch HD IPS Screen
- 360° Joystick Articulating Borescope
- 210° Image Rotation
- Adjustable LED lights
- Detachable Screen Design

Applications

- Inspect inside pipes to identify blockages, leaks, corrosion, and other issues.
- Examination of automotive engine internals, exhaust tubing, brake systems, etc...
- Inspection of internal components like engines, combustion chambers, ducts, etc...
- Assessment of equipment interiors for wear, corrosion, cracks, and similar conditions.
- Surveying concealed areas within buildings, such as internal walls and pipelines.
- Examination of ship hull interiors, compartments, drainage systems, etc...

SAFETY INSTRUCTION

⚠ WARNING! Please read all safety warnings and instructions before using this product. Failure to follow these warnings may result in electric shock, fire or serious injury.

- Keep the tool dry, clean, free from oil, water, gas or other materials that may cause corrosion.
- Keep your work area clean and well lit.
- This appliance is not intended for use by persons with limited physical, sensory or mental capabilities.
- This appliance is not intended for medical use or personal inspection.
- Keep bystanders, and children away while operating the tool.
- Do not overreach, keep proper footing and balance at all times.

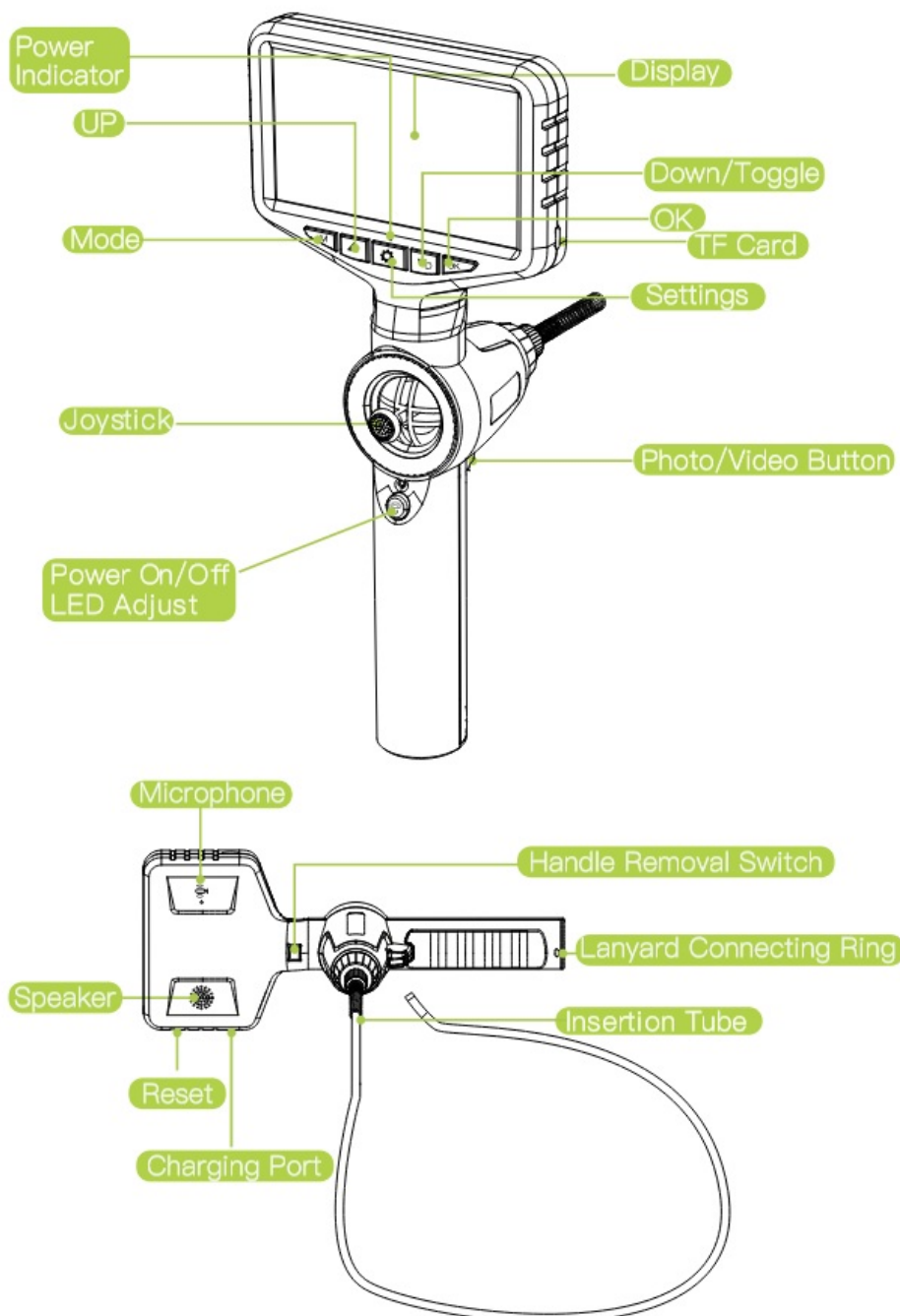
ABOUT ANYKIT

Anykit is a trendy and practical tool brand. We focus on simplicity and ease of use, providing people with convenience in their everyday lives. Our products including otoscopes, endoscopes, and a variety of household tools to enable DIY enthusiasts to embrace creativity and convenience.



Follow Anykit on Amazon for More

KNOW YOUR PRODUCT



SPECIFICATIONS

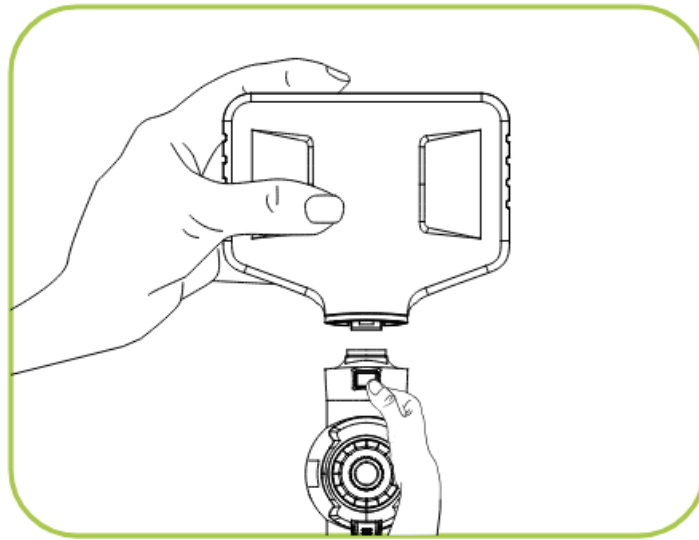
Image Resolution	1920*1080
Video Resolution	1280*720
DOF	20-100mm
FOV	70°
Manual dimming	Three adjustment levels
Power supply	3.7V
Use time	About 4h
Battery capacity	3000mAh
Camera light source	Adjustable LED
Waterproof grade	IP67
Camera probe material	Wear resistant metal hose
Camera probe length	5ft (1m)
High temperature protection	High temperature intelligent protection
Articulation	360 Degrees
Steering angle	≤ 210°
Bending radius	38mm
Storage	Standard 32GB-TF Card

Work environment

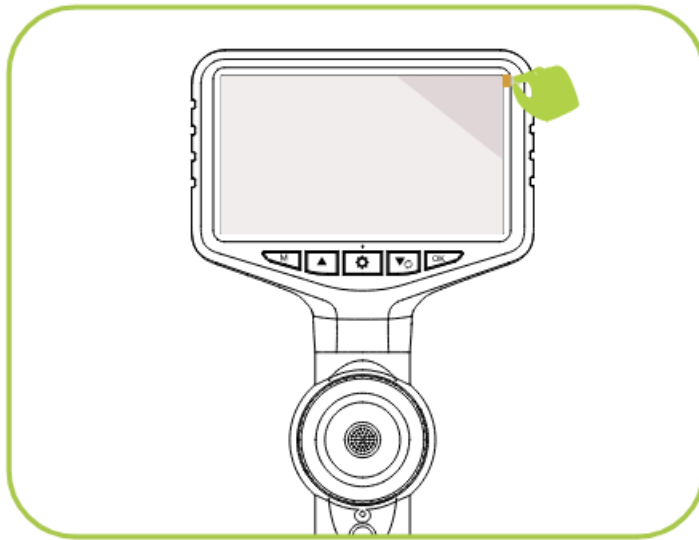
Operating environment	Machine	-20°C~70°C
Input voltage		DC5V/1A
Humidity		10~80%

PREPARATION & SETUP

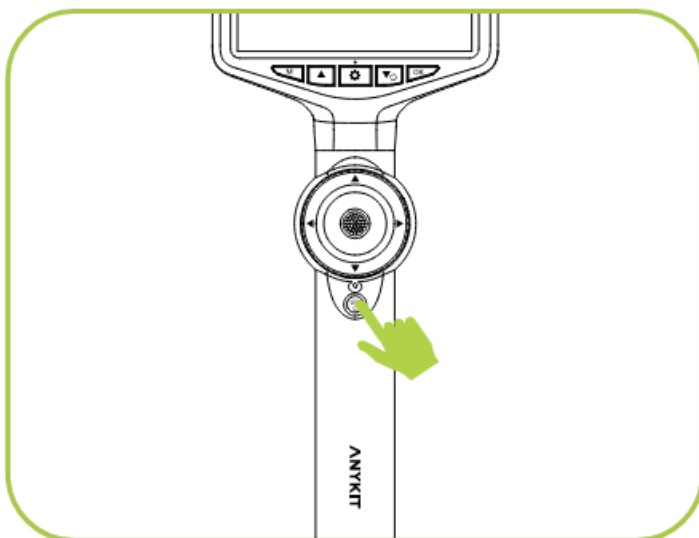
Step 1: Install the screen and handle, align them with the interface, and press firmly until you hear a click, indicating that they are connected.



Step 2: Remove the plastic screen cover.



Step 3: Turn the camera on/off by pressing and holding the “POWER” button for a few seconds.



Step 4: Low Battery Indicator: If the battery icon on the screen displays low battery, please ensure it is fully charged before use.



DISPLAY

Mode: Press (M) to switch between the three modes:
 photo taking/ video recording/ playback

TF card status: TF card inserted/no card

Temperature Unit: The temperature display unit on the screen can be switched between Fahrenheit and Celsius.












Date and time – modify the date and time in Settings menu

SETTINGS


Press the button “” twice to enter the settings page.

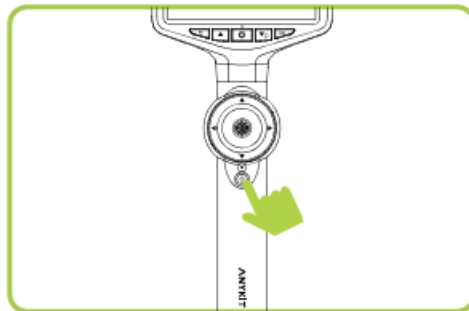
Press “” and “” to select the items you need.

Press “OK” to save your choice.

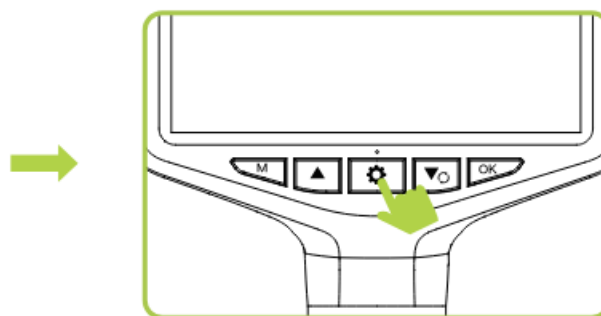
	
	Automatic shut-down
	Language settings
	Date Time
	Temperature Unit
	Format
	Default Settings
	Version

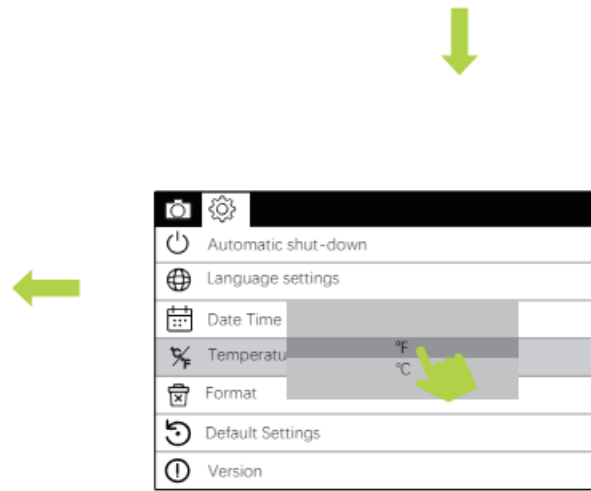
CHANGE THE TEMPERATURE UNITS

1. Long Press the power button  to power on, the monitor will light up and the blue power indicator will turn on.



2. Press the  key twice.






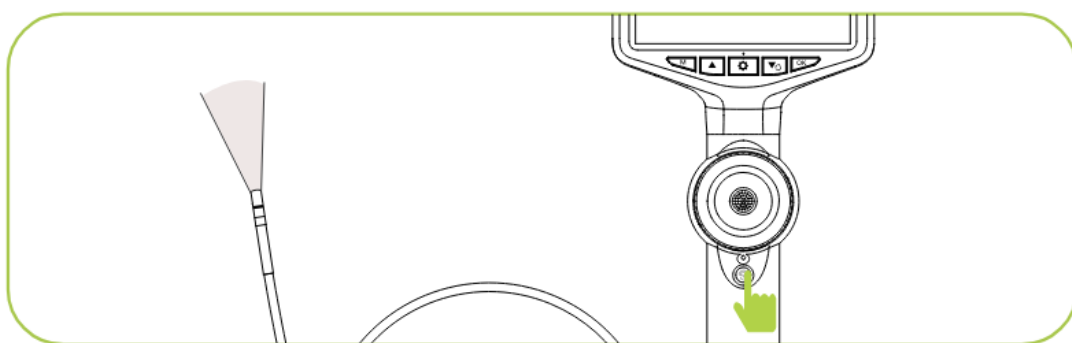
3. Use the “▲” and “▼” to select whether to set Fahrenheit or Celsius, then press the “OK” to confirm the temperature unit.



4. Then the temperature on the screen will be displayed in the unit you have selected.

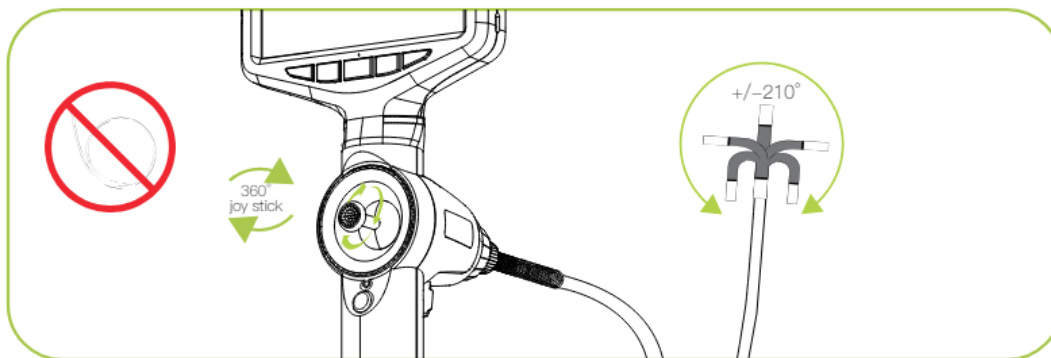
LED BRIGHTNESS ADJUSTMENT

Press the “” briefly to adjust the brightness of the camera light. The brightness cycles through bright, medium, dim, and light off.

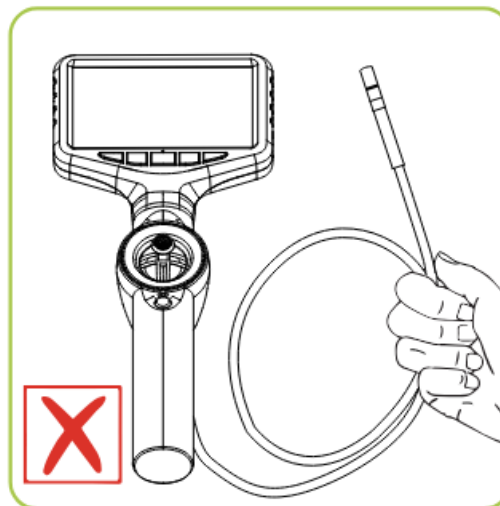
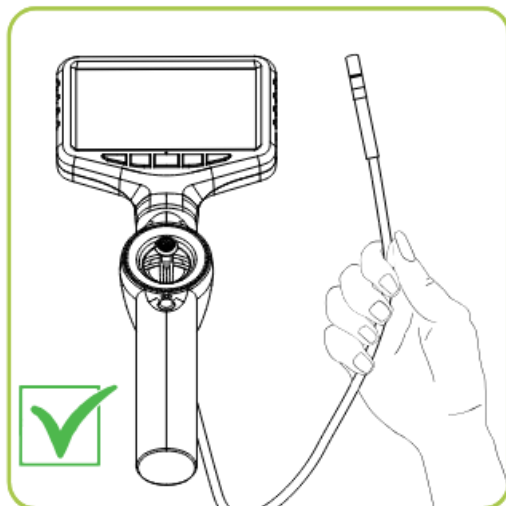


ADJUSTABLE LENS FIELD OF VIEW

The articulation wheel allows for a 210° rotation, adjusting the lens field of view.




⚠ Tips: To achieve the max articulation angle, the cable should not be coiled in a circle.



Notice When using the borescope, it is important to emphasize that the coil should not be wound up as this can affect the steering function and cause the articulation angle to become smaller.

SWITCH BETWEEN PHOTO & VIDEO RECORDING

Press “**M**” to switch to the photo taking or video recording mode, and press “” located at the back of the product to take a photo or start recording.

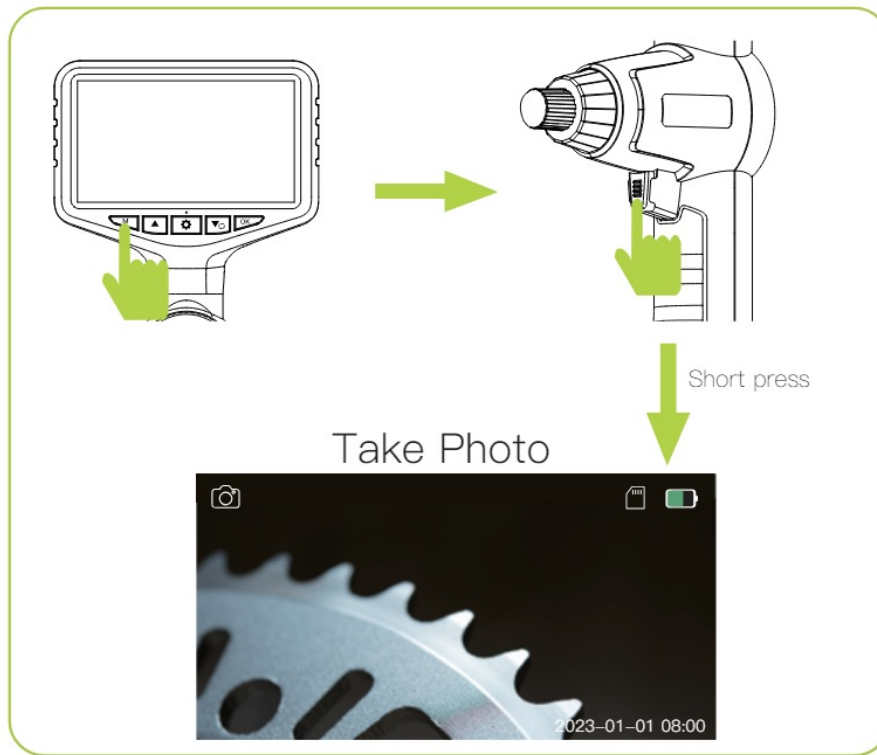
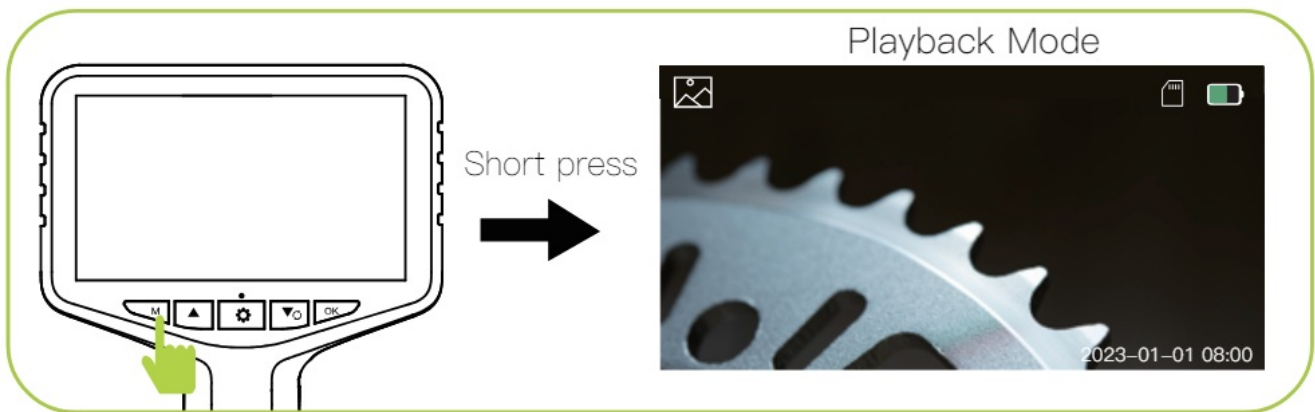
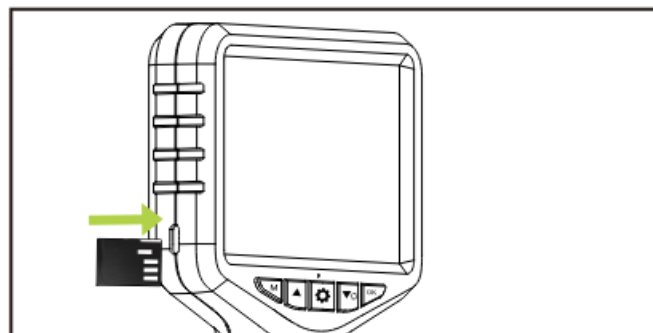


IMAGE PLAYBACK

Press “**M**” to switch to playback mode, press “**▲** **▼**” to select photo or video, press “**OK**” to play back the video.



TF CARD INSERTION AND REMOVAL GUIDE

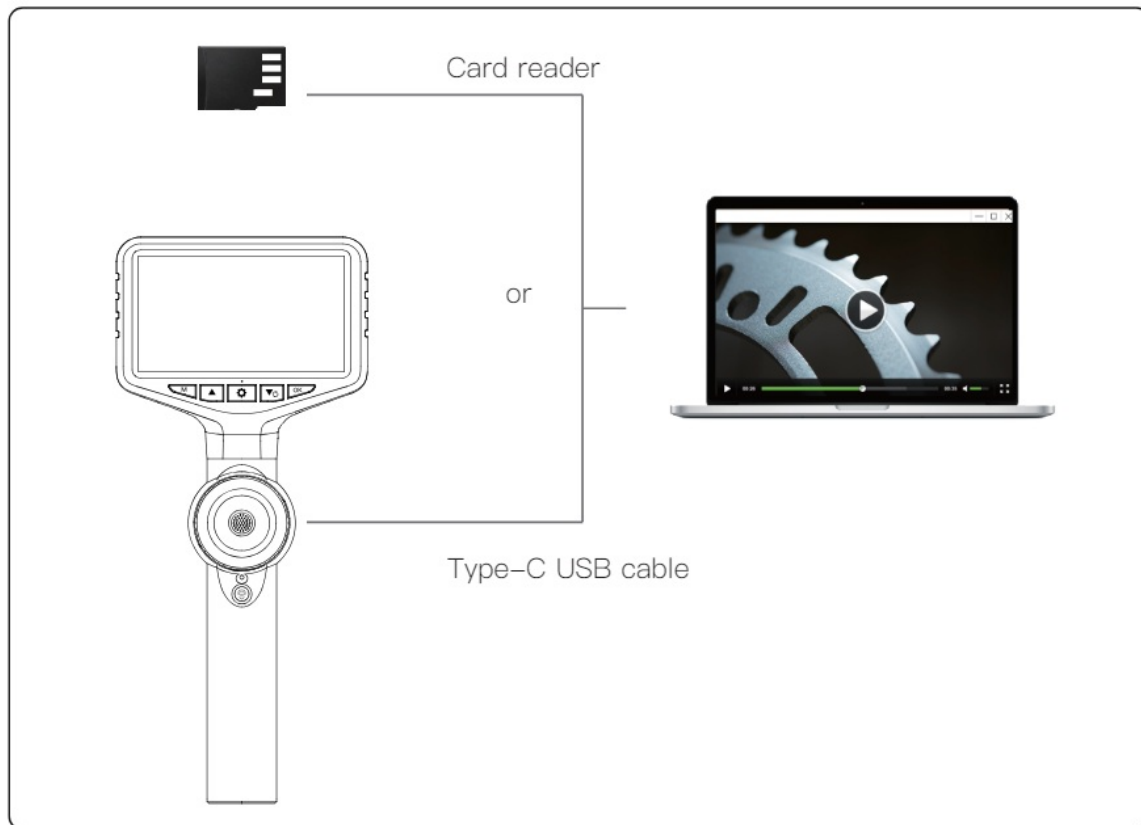


The device is equipped with a TF memory card(inserted). Gently press to eject the card.

Insert TF card:

- Power off the device first before inserting the TF card.
- Make sure the direction and the front and back orientation is correct when inserting the TF card.
- Do not use excessive force when inserting or removing the TF card to prevent damage to the card slot structure.

COPY PHOTO AND VIDEO FILES TO COMPUTER



You can use a TF card reader to copy data directly or use a Type-c cable to connect to a computer for copying.

MAINTENANCE

Before cleaning your borescope, it's important to power it off and disconnect it to ensure it's completely safe. To maintain optimal image quality, delicately wipe the camera lens with a soft microfiber cloth and cotton swab before and after each use to remove dust and smudges.

When cleaning the screen, use a microfiber cloth and a mixture of warm water and medical-grade alcohol to gently wipe off dust and fingerprints. Avoid using abrasive cleansers, chemicals, or solvents as they can damage the device's exterior and interior components. Be careful not to let moisture infiltrate any device openings or ports during the cleaning process, and ensure the device is thoroughly dry before reconnecting to power or use.

When storing the device, power it down and keep it in a dry, cool, and well-ventilated area. If your device features a coiled probe, gently coil it without bending it too tightly. Avoid coiling it tighter than it was packaged originally and shield it from direct sunlight, extreme temperatures, and humid conditions. Keep it away from sharp objects and heavy items to prevent any damage.

By following these detailed cleaning and maintenance instructions, you can extend the lifespan of your industrial endoscope while maintaining top-notch performance and image quality.

TROUBLESHOOTING

Problems	Solutions
No Camera	Unplug and reinsert the monitor, ensure the monitor and controller are well connected.
No Picture	Check probe and power. Restart the device.
Cannot Be Turned On	Insufficient power, charge it and try to turn it on.
Auto Shutdown	The probe will automatically shut down when it exceeds the protection temperature, you can try to turn it on again after it cools down.
TF Card Insertion Error	Insert compatible card. Format if needed.
Unable to Charge	Check cable and port. Try different cable/adapter.
Blurry Picture	Clean lens/screen. Adjust focus if possible.
Blurry Screen Display	Adjust contrast and brightness for clearer visuals.
Connection Interruption	Secure cable connection. Swap if needed.
Difficulty Operating	Study manual or video guides.
Abnormal Screen Colors	Check cable. Contact support if issue persists.
Screen Flickering or Lines	Check power. Restart.
Device Heating Up	Ensure ventilation. Avoid high temps.
Difficulty Starting the Device	Check battery. Hold power button.
Image Inversion or Reversal	Adjust image settings in menu.
Slow Screen Response	Restart device. Manage memory usage.
Difficulties Bending the Probe	Coil probe gently. Stop if resistance.
*If you encounter any issues while using the product, don't hesitate to reach out to us. We'll provide feedback within 24 hours and work swiftly to resolve the matter.	

WARRANTY

30-Day Guarantee	We will give you a full refund if you are not satisfied with the product.
One-Year Warranty	We offer a limited warranty that commences from the date of purchase of the product.




Visit anykit.com or scan the QR code for more details.

CUSTOMER SUPPORT

If you have any questions or concerns about your product, please contact our Customer Support Team

	1- 877-888-7979 Mon.-Fri. 8:00-5:00 PST(US)
	support@anykit.com
	www.anykit.com
	@anykit
	@anykit
	Facebook Messenger



 <p>ANYKIT 360° Articulating Borescope Model No.: AN150P</p>	<p>ANYKIT AN150P 360 Degree Articulating Borescope [pdf] Installation Guide AN150P 360 Degree Articulating Borescope, AN150P, 360 Degree Articulating Borescope, Degree Articulating Borescope, Articulating Borescope, Borescope</p>
---	---

References

- [AnyKit – Anykit](#)
- [AnyKit – Anykit](#)
- [User Manual](#)

Manuals+. [Privacy Policy](#)

This website is an independent publication and is neither affiliated with nor endorsed by any of the trademark owners. The "Bluetooth®" word mark and logos are registered trademarks owned by Bluetooth SIG, Inc. The "Wi-Fi®" word mark and logos are registered trademarks owned by the Wi-Fi Alliance. Any use of these marks on this website does not imply any affiliation with or endorsement.