

ANYCUBIC M7 Photon Mono Installation Guide

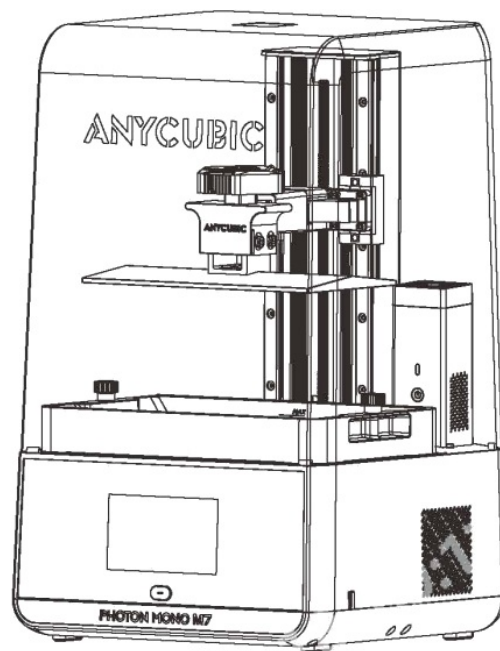


Contents

- [1 Photon Mono M7](#)
- [2 Installation and Usage Instructions](#)
 - [2.1 \(01\) Introduction](#)
 - [2.1.1 Overview](#)
 - [2.1.2 In the Box](#)
 - [2.1.3 Product Parameters](#)
 - [2.2 \(02\) Preparations](#)
 - [2.2.1 Assembly](#)
 - [2.2.2 Accessories Installation](#)
 - [2.3 \(03\) File Upload](#)
 - [2.3.1 USB](#)
 - [2.3.2 Cloud](#)
 - [2.4 \(04\) Resin Preparations](#)
 - [2.5 \(05\) Print Test](#)
 - [2.6 \(06\) Resin Recycling](#)
 - [2.7 \(07\) Attention](#)
 - [2.7.1 Radio interference](#)
- [3 Documents / Resources](#)
 - [3.1 References](#)
- [4 Related Posts](#)

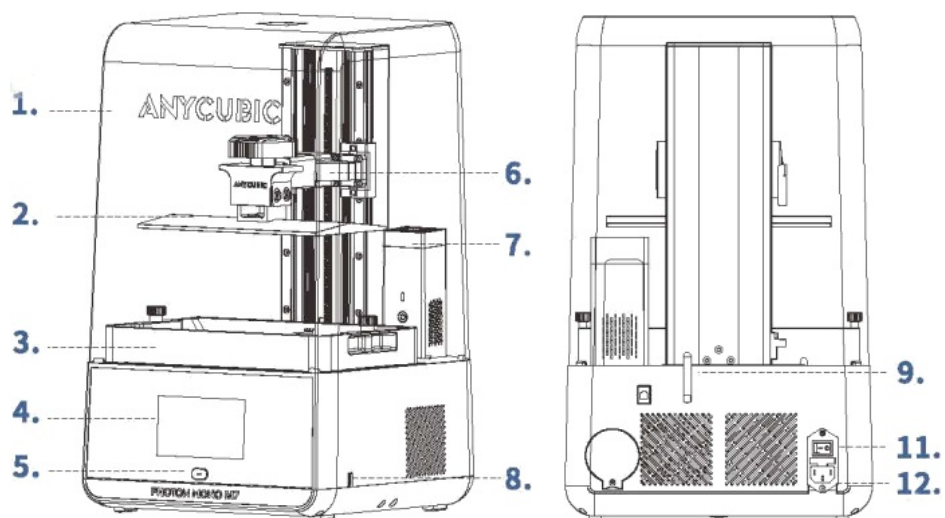
Photon Mono M7

Installation and Usage Instructions



(01) Introduction

Overview

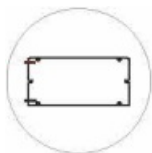


1. Cover
2. Print Platform
3. Resin Vat
4. Touch Screen
5. Start Button
6. Z axis
7. Air Purifier
8. USB Port
9. WiFi Antenna
11. Power Switch
12. Power Port

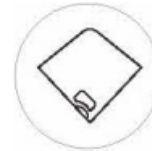
In the Box



Photon Mono M7 Print Platform*1 Resin Vat*1 Manual*1



Screen Protector Kit Leveling Paper Air Purifier*1



Protective Equipment Funnels*5 Scrapers*2



Hex Key Set USB Drive*1 WiFi Antenna Power Cord

Product Parameters

Technical Specifications

LCD screen	10.1-inch 14K
Light source	COB light
XY Resolution	13312* 5120
Leveling Method	No-Leveling Required
Touch Screen	4.3-inch Capacitive Screen

Physical Dimensions

Product Dimension	310 mm(L) *315 mm(W) *520 mm(H)
Build Volume	223.64 mm(L) *126.48 mm(W) *230 mm(H)
Weight	12 kg

WiFi

Frequency Range	2.4 G (2.400~2.4835 GHz)
Work Mode	AP, STA, AP+STA mode

(02) Preparations

For the first use, please follow the instruction to finish the preparation including assembly and accessories installation.

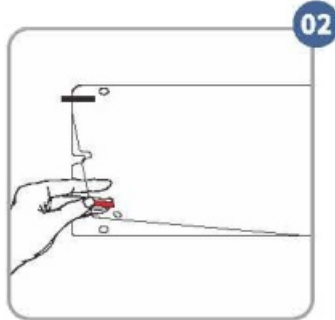
Assembly

1. Unbox, and take out the machine and its accessories.

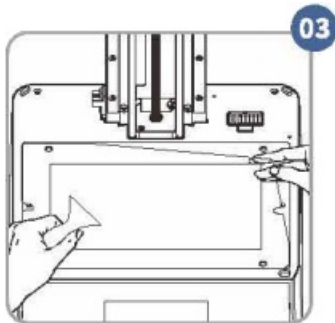
2. Install the screen protector.



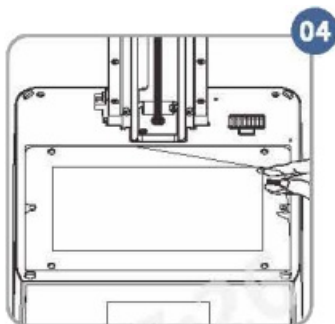
Peel off the protective film Clean the LCD screen



Peel off the film (1)

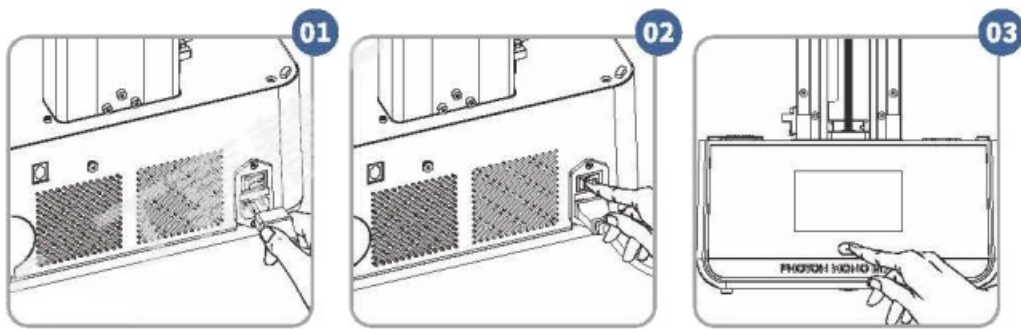


Align the locating holes Squeeze out air bubbles



Peel off the film (2)

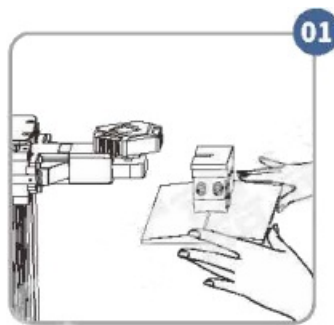
3. Connect the power adapter, flip the rocket switch to ON Position and long press the start button.



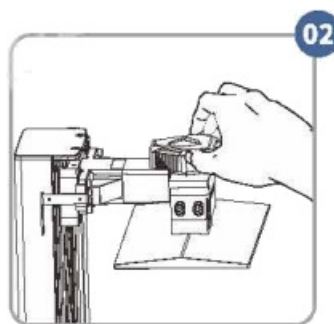
4. Set the system language and choose “Global” server. Then, complete the on-screen setup steps.



5. Install the Print platform.



Push the platform onto the platform carrier



Tighten the knob

6. Install the WiFi antenna.



Accessories Installation

1. Install the resin vat.



Put resin vat with its feet stuck in locating holes

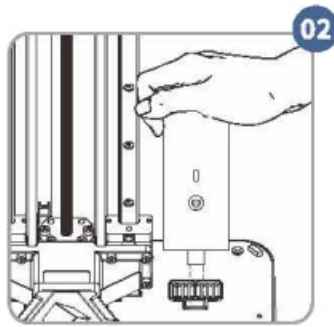


Tighten the two knobs

2. Install the air purifier (optional).



Remove the package of carbon



(03) File Upload

USB

1. Use Anycubic Photon Workshop software to process the 3D model file. The installer and instructions is saved in the USB drive.
2. Slice the model. When you set the parameters in the software, there are groups of parameter which can be apply to the printing with different needs.
3. Save the sliced file to USB drive. Then, insert the USB drive to the printer.

Notice for USB drive:

- It is recommended that use the USB drive we provide. If you are using your own USE drive, please ensure that it is formatted to FAT/FAT 32 and has a memory size of less than 64G.
- To ensure proper file reading, please put print files in the root directory of USE drive.

Cloud

Please connect the printer to Anycubic App first for remote printing.

1. Connect to the network.



2. Please search “Anycubic” in App Store or Google Play, or scan the QR code on the printer, to download Anycubic App. Then, sign up and sign in.



3. Add a printer in Anycubic App.

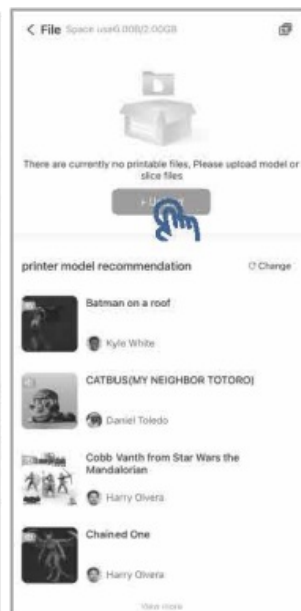
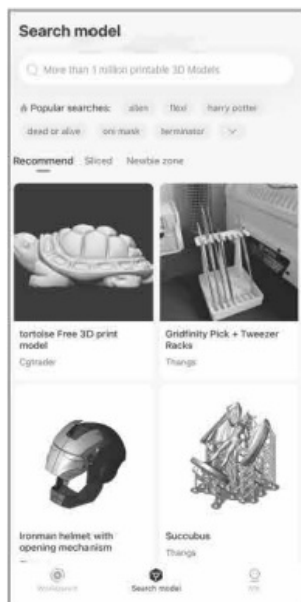


1. Scan this QR code to add the printer

4. Printer is added successfully.



5. Search model or upload the model files.



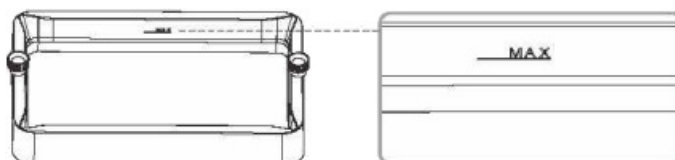
Search model

Upload the model files

(04) Resin Preparations

***The release film on the resin vat is consumable. Please pay attention to the status of release film on the touch screen and replace the film timely. It is suggested to check the release film carefully before and after every printing. If the film is broken, replace it immediately to avoid further damage to machine.**

1. Make sure to wear a mask and gloves (to avoid direct skin contact with the resin), slowly pour the resin into the vat and make sure it is within the vat's maximum scale.



2. Turn on air purifier.

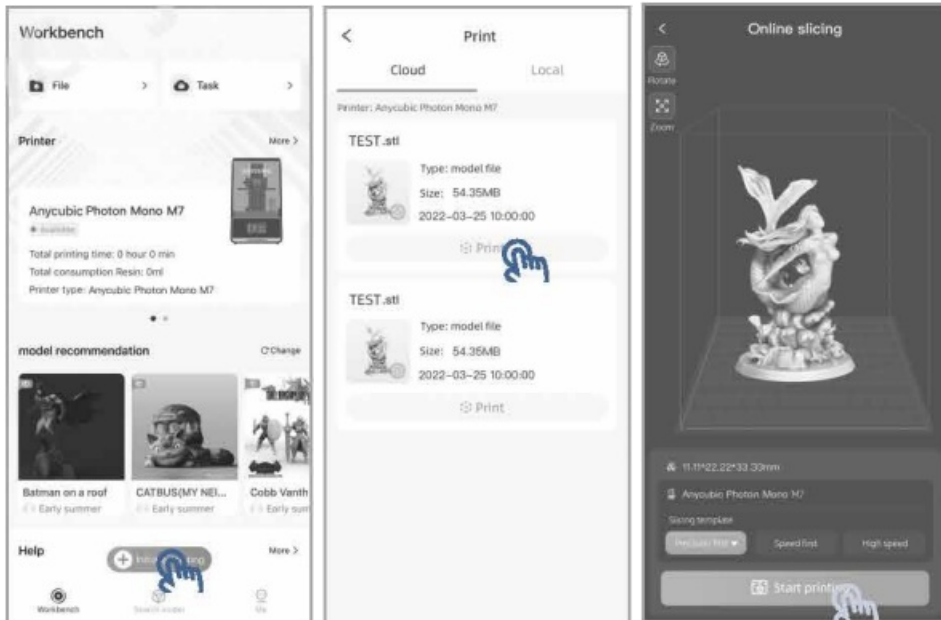


3. Put on the cover.

(05) Print Test

There are two methods to print the file.

- Remote print



- Print USB drive file



Notice:

1. High speed mode (sliced file) requires high speed resin!
Otherwise, the print may fail.

2.The printer has been designed requiring no leveling for the first use.
However, please re-level the printer in the following scenarios:

- The print platform has been fallen to the ground.
- Changing new print platform or LCD screen.
- The printed object sticks to the resin vat instead of the print platform.



Scan the QR code for the leveling tutorial

(06) Resin Recycling

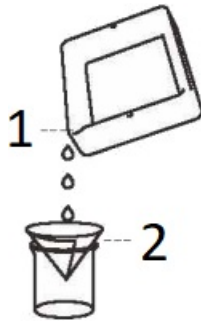
1. The resin may be cured partially in the vat if the print fails.

Please remove the residue by Vat Cleaning to avoid the damage to the LCD screen and the printer.



1. Remove resin sheet by plastic scraper

2. If there is any remaining resin, please pour it out through vat spout and filter it with a funnel.



1. Vat Spout

2. Funnel

3. If you do not use the resin for over two days, store it in an airtight container away from light.

(07) Attention

1. In case of emergency, please immediately cut off the power of 3D printer and then contact our technical support.

2. UV light is harmful to the eyes; please avoid direct contact. When operating, wear protective equipment such as anti-UV goggles and gloves.

3. Be cautious when using the scraper, and make sure to orient the sharp parts of printer and tool away from people.

4. Keep Anycubic 3D printer and its accessories out of the reach of children.

5. Do not expose Anycubic 3D printer to water or rain.

6. Do not disassemble Anycubic 3D printer, please contact technical support if you have any questions.

Thankyou for purchasing Anycubic products! For detailed user manual and software installation, please refer to user manual from the USB drive or visit www.anycubic.com and download. If you need any help, please contact technical support at support.anycubic.com/en.

Radio interference

WARNING: This device complies with Part 15 of the FCC Rules. Operation is subject to the following two

conditions:

(1) This device may not cause harmful interference, and (2) this device must accept any interference received, including interference that may cause undesired operation.

CAUTION: Changes or modifications not expressly approved by the party responsible for compliance could void the user's authority to operate the equipment.

NOTE: This equipment has been tested and found to comply with the limits for a Class B digital device, pursuant to Part 15 of the FCC Rules. These limits are designed to provide reasonable protection against harmful interference in a residential installation. This equipment generates, uses, and can radiate radio frequency energy. If not installed and used in accordance with the instructions, it may cause harmful interference to radio communications. However, there is no guarantee that interference will not occur in a particular installation. If this equipment does cause harmful interference to radio or television reception, which can be determined by turning the equipment off and on, the user is encouraged to try to correct the interference by one more of the following measures:

- Reorient or relocate the receiving antenna.
- Increase the distance between the equipment and receiver.
- Connect the equipment to an outlet on a circuit different from that to which the receiver is connected.
- Consult the dealer or an experienced radio/TV technician for help.

To maintain compliance with FCC's RF Exposure guidelines, this equipment should be installed and operated with minimum distance between 20cm the radiator your body: Use only the supplied antenna.



Name: APEX CE SPECIALISTS LIMITED
Add: 89 Princess Street, Manchester, M14HT, UK
Contact: Wells
Tel: +441616371080

E-mail: info@apex-ce.com



Name: Apex CE Specialists GmbH
Add: Habichtweg 141468 Neuss Germany
Contact: Wells Yan
Tel: +353212066339

E-mail: info@apex-ce.com



Documents / Resources



ANYCUBIC M7 Photon Mono [pdf] Installation Guide
M7, M7 Photon Mono, Photon Mono, Mono

References

- [User Manual](#)

[Manuals+](#), [Privacy Policy](#)

This website is an independent publication and is neither affiliated with nor endorsed by any of the trademark owners. The "Bluetooth®" word mark and logos are registered trademarks owned by Bluetooth SIG, Inc. The "Wi-Fi®" word mark and logos are registered trademarks owned by the Wi-Fi Alliance. Any use of these marks on this website does not imply any affiliation with or endorsement.