

**Contents** [[hide](#)]

- 1 [Anycubic Kobra S1 Combo FDM 3D Printer](#)
- 2 [1. Bind the printer](#)
- 3 [2. Update the firmware](#)
- 4 [Step 2: Update the ACE Pro firmware](#)
- 5 [Usage Instructions](#)
 - 5.1 [1. Bind the Printer](#)
 - 5.2 [2. Firmware Update](#)
- 6 [Specifications:](#)
- 7 [FAQ \(Frequently Asked Questions\)](#)
 - 7.1 [Q: How do I know if my printer's firmware needs updating?](#)
 - 7.2 [Q: What should I do if the firmware update fails?](#)
- 8 [Documents / Resources](#)
 - 8.1 [References](#)
- 9 [Related Posts](#)

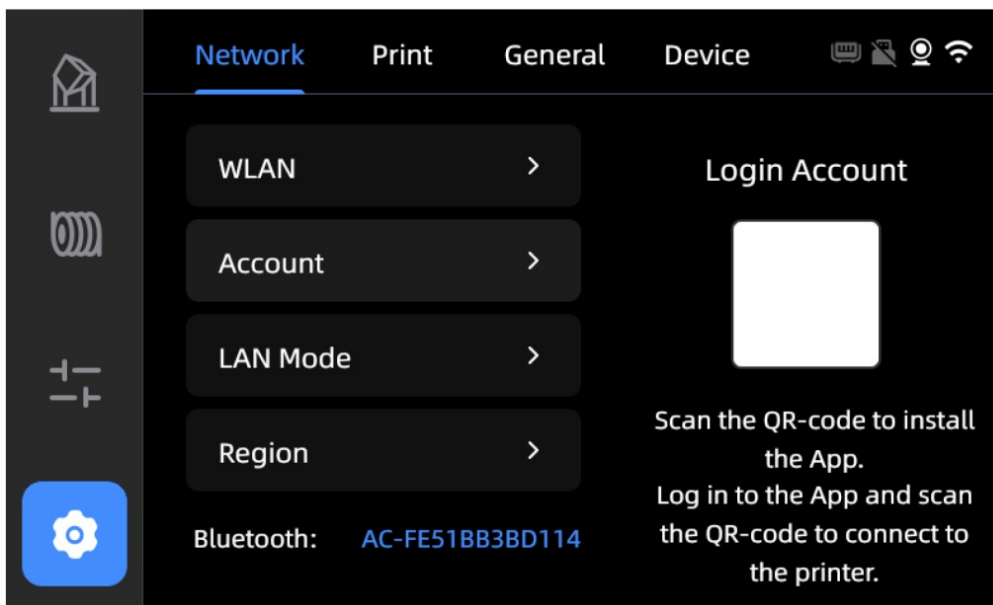
Anycubic Kobra S1 Combo FDM 3D Printer

USER GUIDE

1. Bind the printer

After the printer is turned on, please bind the printer according to the following documents.

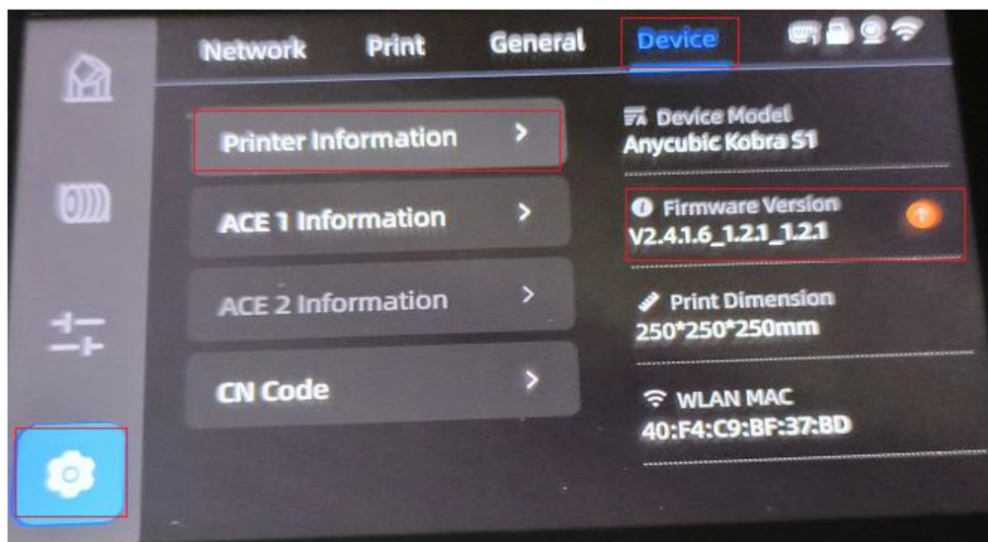
[Kobra S1 Printer Binding Guide | Anycubic Wiki](#)



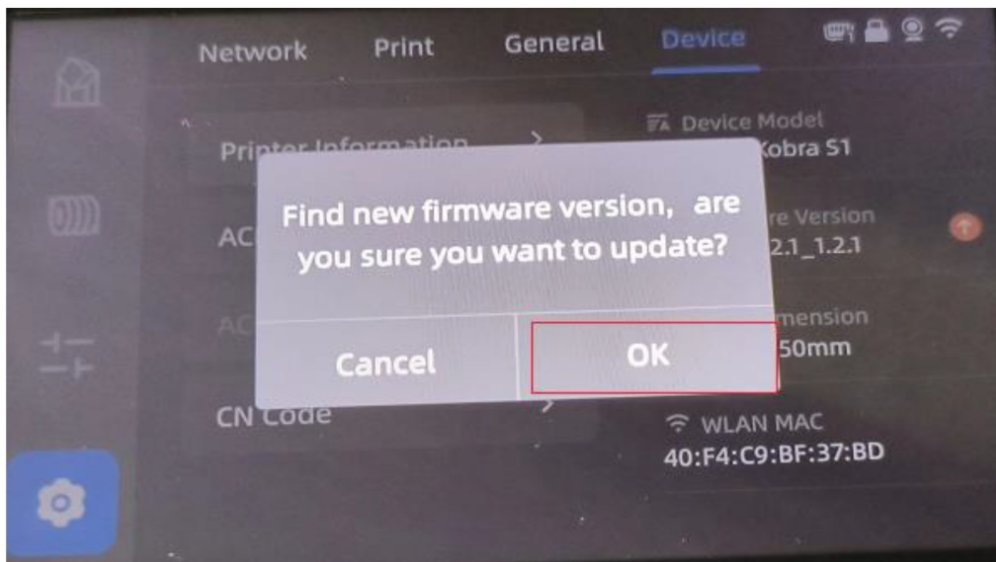
2. Update the firmware

Step 1: Update the printer firmware

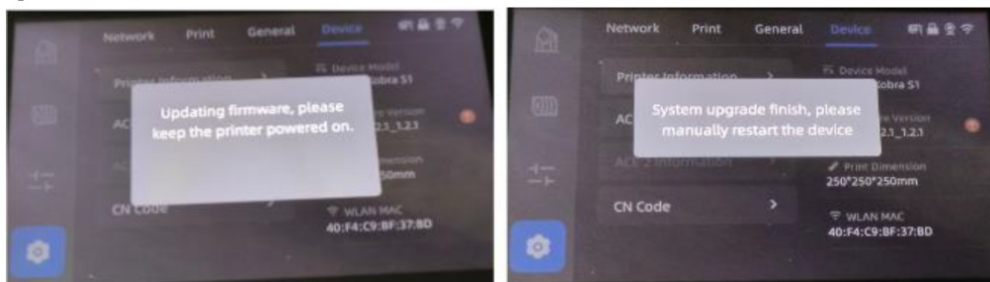
(1) First click the “Settings” icon “Device” “Printer information” from the display screen to check whether the firmware version is the latest version. If the arrow below appears after the firmware version, then the printer’s firmware is not the latest version, please click the arrow to upgrade.



(2) The display screen will pop up to find new firmware version, please click “OK” to update the firmware.

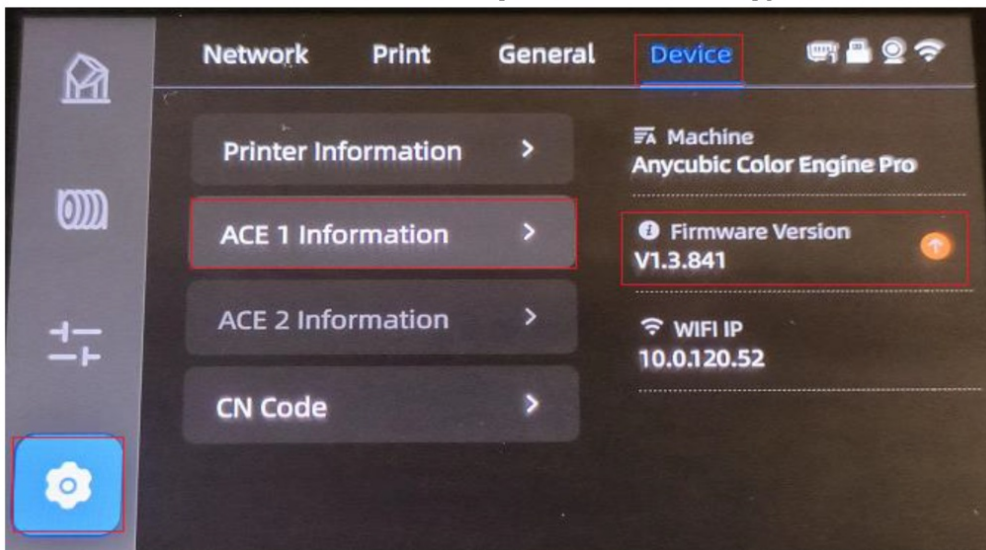


(3) After the firmware update is complete, please restart the printer to check whether the firmware is updated.

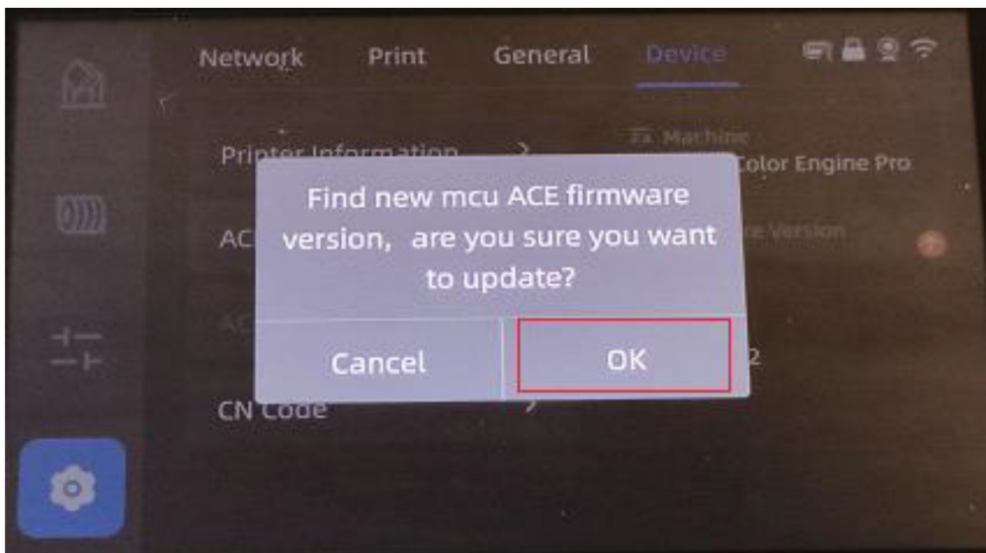


Step 2: Update the ACE Pro firmware

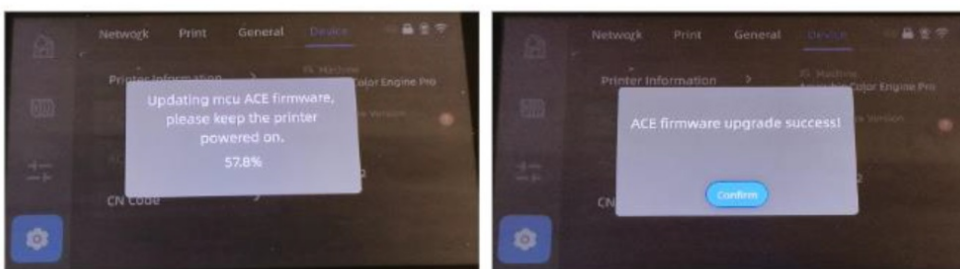
(1) Click the “Settings” icon on “Device” “ACE 1 Information” from the display screen to check whether the firmware version is the latest version. If the arrow below appears after the firmware version, then the firmware is not the latest version, please click the arrow to upgrade the firmware.



(2) The display screen will pop up to find new mcu ACE firmware version, please click “OK” to update the firmware.



(3) Click “Comfirm” to complete the firmware update of ACE Pro.



Usage Instructions

1. Bind the Printer

After turning on the printer, follow the Printer Binding Guide provided by Anycubic to bind the Kobra S1 printer.

2. Firmware Update

Step 1: Update Printer Firmware

1. Click on the Settings icon – Device – Printer Information on the display screen to check the firmware version.
2. If an arrow appears below the firmware version, it indicates that a newer version is available. Click the arrow to upgrade.
3. When prompted, click OK to update the firmware.
4. After the update is complete, restart the printer to verify the firmware update.

Step 2: Update ACE Pro Firmware

1. Click on the Settings icon – Device – ACE 1 Information on the display screen to check the firmware version.
2. If an arrow appears below the firmware version, upgrade the firmware by clicking the arrow.
3. Click OK to update the firmware when prompted to install the new mcu ACE firmware version.
4. Confirm to complete the ACE Pro firmware update.

Specifications:

- Product Name: Kobra S1
 - Function: 3D Printer
 - Manufacturer: Anycubic
-

FAQ (Frequently Asked Questions)

Q: How do I know if my printer's firmware needs updating?


A: Check the firmware version in the Settings menu on the display screen. If an arrow

appears below the version, an update is available.

Q: What should I do if the firmware update fails?

A: If the firmware update fails, ensure stable power supply and internet connection, then attempt the update again. If issues persist, contact customer support.

Documents / Resources

	Anycubic Kobra S1 Combo FDM 3D Printer [pdf] User Guide Kobra S1 Combo FDM 3D Printer, Kobra S1, Combo FDM 3D Printer, FDM 3D Printer, 3D Printer
---	--

References

- [User Manual](#)

Related Posts



[ANYCUBIC Kobra 2 Plus Auto-Levelling FDM 3D Printer User Manual](#)

ANYCUBIC Kobra 2 Plus Auto-Levelling FDM 3D Printer User Manual



[Anycubic Kobra 3 Combo FDM 3D Printer User Guide](#)

Anycubic Slicer User Guide The Anycubic Slicer is developed based on Prusa Slicer and features custom functions specifically...



[Anycubic K3 Max Camera Bundle Anycubic Kobra 3 3D Printer User Manual](#)

K3 Max Camera Bundle Anycubic Kobra 3 3D Printer



[ANYCUBIC Kobra 2 3D Printer User Guide](#)

ANYCUBIC Kobra 2 3D Printer Machine Installation The TF card of the machine comes with an instruction video.

...

3D Printer, Anycubic, Combo FDM 3D Printer, FDM 3D Printer, Kobra S1, Kobra S1 Combo FDM 3D

Anycubic Printer

Leave a comment

Your email address will not be published. Required fields are marked *

Comment *

Name

Email

Website

☐ Save my name, email, and website in this browser for the next time I comment.

Post Comment

Search:

Search

This website is an independent publication and is neither affiliated with nor endorsed by any of the trademark owners. The "Bluetooth®" word mark and logos are registered trademarks owned by Bluetooth SIG, Inc. The "Wi-Fi®" word mark and logos are registered trademarks owned by the Wi-Fi Alliance. Any use of these marks on this website does not imply any affiliation with or endorsement.