



# ANYCUBIC Kobra 2 Max Large and Automatic Leveling Desktop User Guide

[Home](#) » [Anycubic](#) » ANYCUBIC Kobra 2 Max Large and Automatic Leveling Desktop User Guide 

## Contents

- [1 ANYCUBIC Kobra 2 Max Large and Automatic Leveling Desktop](#)
- [2 Product Information](#)
- [3 Product Usage Instructions](#)
- [4 Upgrade Steps](#)
- [5 Version Confirmation](#)
- [6 Troubleshooting Guide](#)
- [7 Documents / Resources](#)
  - [7.1 References](#)
- [8 Related Posts](#)



**ANYCUBIC Kobra 2 Max Large and Automatic Leveling Desktop**



## Product Information

### Specifications

- **Product Name:** Kobra 2 Max
- **Wi-Fi Compatibility:** 2.4GHz

## Product Usage Instructions

### Upgrade Steps

#### Connect to Wi-Fi

Follow these steps to connect your device to Wi-Fi:

1. Plug in the device and turn it on.
2. On the main interface, click on the Settings icon.
3. Select Cloud, and WLAN, and activate the WLAN option.
4. The device will automatically search for nearby 2.4GHz WiFi signals.
5. Select the corresponding Wi-Fi signal.
6. Input the password.
7. The device will connect to Wi-Fi when the Wi-Fi icon on the left turns blue.

#### Upgrade Firmware

Follow these steps to upgrade the firmware:

1. Click on the top-left corner "<" icon to return to the Settings interface.
2. Click More Settings, About Machine, and the red arrow icon.
3. The device will prompt you to confirm the upgrade.

4. After confirming, the firmware upgrade will automatically complete within 3 minutes.

### **Device Calibration**

After the firmware upgrade is complete, the device will automatically restart. Once the device restarts, it will prompt you to go through the setup process again. Please do not skip this setup. Follow the on-screen instructions carefully.

If you do not receive a prompt, follow these steps:

1. On the main screen, click on Settings.
2. Click on More Settings.
3. In the next screen, click on Guide.
4. It will be asked if you want to enter the user guide; click Confirm to proceed.
5. This will ensure that the device is properly calibrated after the firmware upgrade.

### **Version Confirmation**

To check if the firmware version has been successfully updated, follow these steps:

1. Go to Settings.
2. Click on More Settings.
3. Click on About Machine.
4. Check if the firmware version has been updated.

### **Troubleshooting**

#### **Additional Issues**

If you encounter any problems during the upgrade, we recommend that you create a support ticket. The after-sales engineers will assist you in finding a solution to the problem. The reply time is 1 working day. Please click [here](#) to submit your ticket.

### **FAQ**

#### **How long does the firmware upgrade take?**

The firmware upgrade will automatically complete within 3 minutes.

#### **Do I need to calibrate the device after the firmware upgrade?**

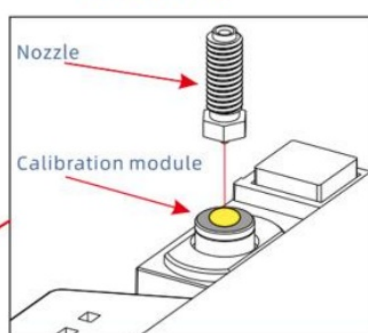
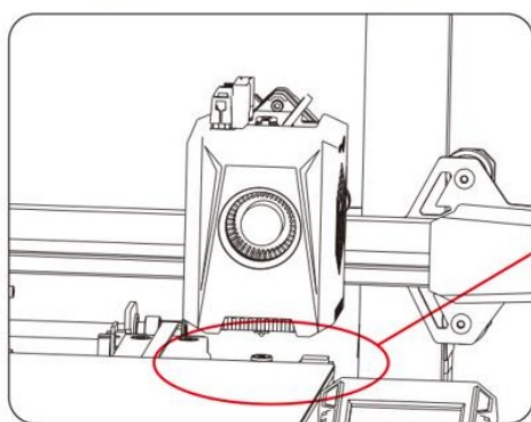
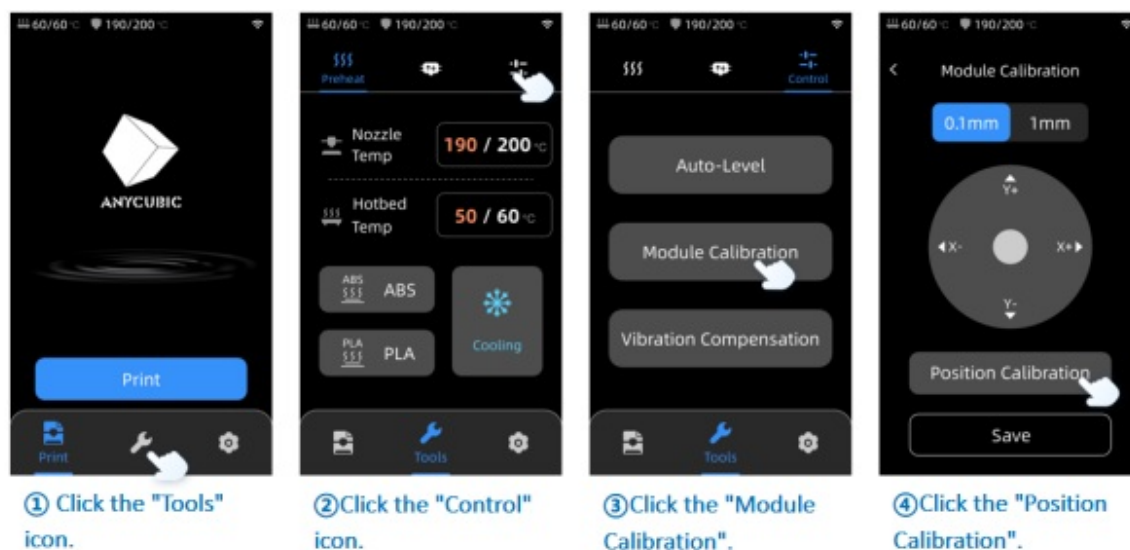
Yes, it is recommended to go through the setup process again to ensure proper calibration after the firmware upgrade.

### **Kobra 2 Max Firmware Upgrade Guide**

#### **Tips:**

1. Please make sure to follow the "Guide" and do not skip any steps.
2. After Update the firmware. In the main interface, click on the "Tools" icon, "Control" icon, "Module Calibration", and "Position Calibration." The machine will automatically perform detection and pause near the top the calibration module.

You could adjust the nozzle to the center position of the calibration module using the distance units and X/Y axis movement direction on the interface. Once done, click “Save,” and finally, perform the automatic leveling again.



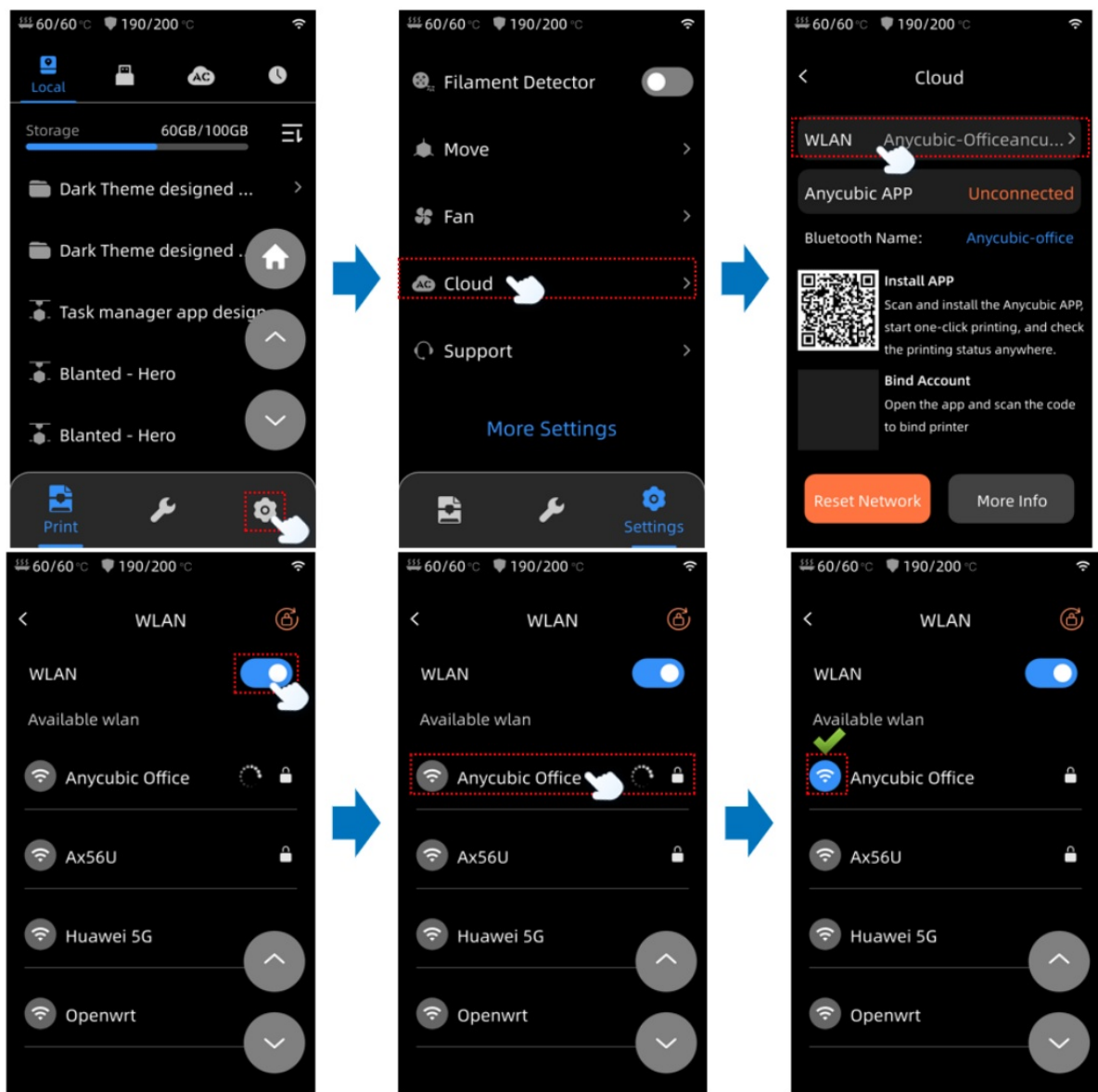
The shown nozzle is on the print head and some parts are left out for better display.



## Upgrade Steps

### Connect to Wi-Fi:

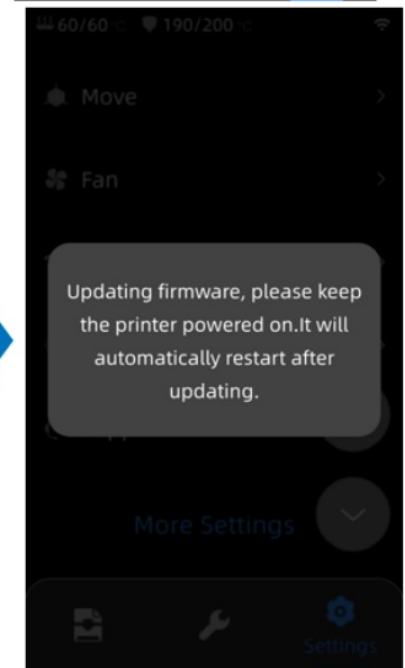
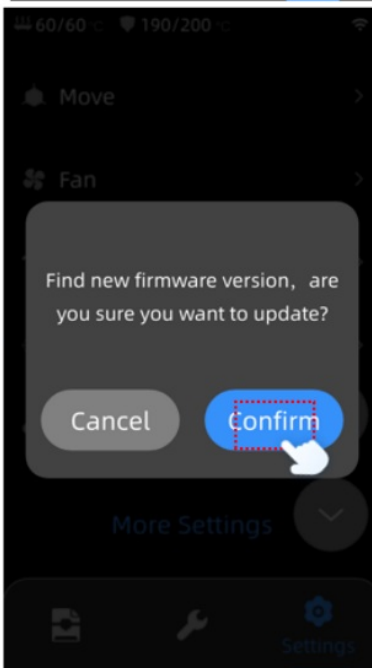
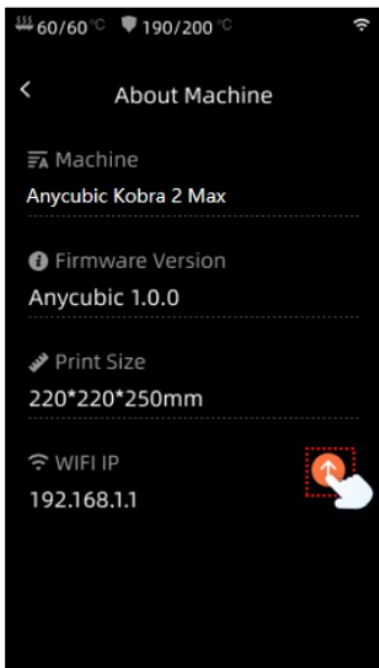
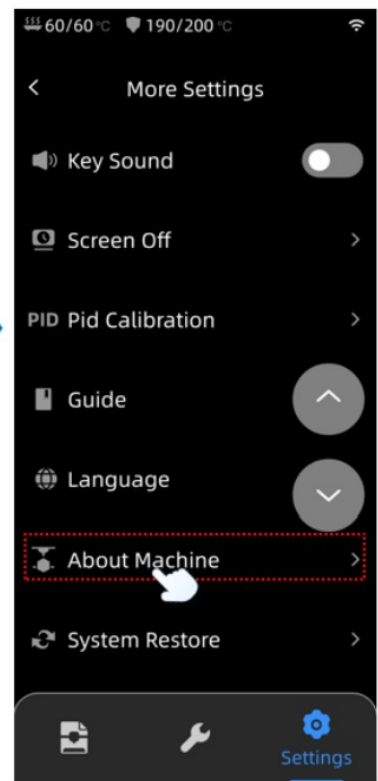
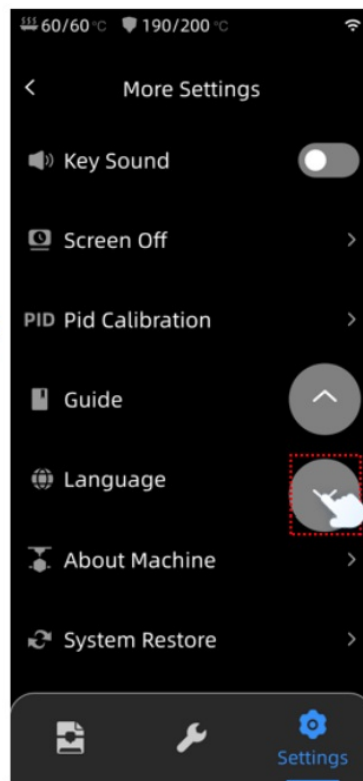
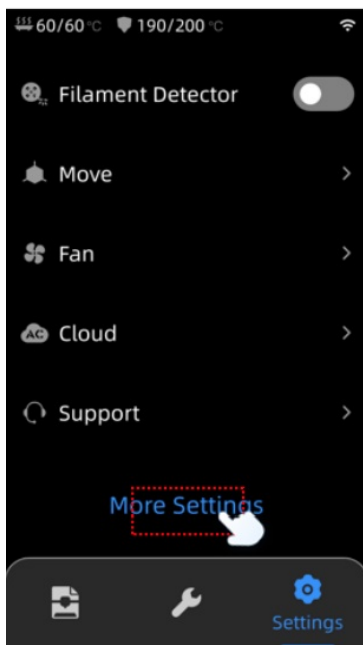
- Plug in the device and turn it on. On the main interface, click on the “Settings” icon, then “Cloud,” “WLAN,” and activate the “WLAN” option. The device will automatically search for nearby 2.4GHz Wi-Fi signals.
- Select the corresponding Wi-Fi signal, input the password, and the device will connect to Wi-Fi when the Wi-Fi icon on the left turns blue.



### Upgrade Firmware:

For readability, the images in the following illustration show all the available options, which may differ from the actual device interface. Please follow the prompts below:

Click on the top-left corner "<" icon to return to the Settings interface. Click "More Settings," "About Machine," and the red arrow icon. The device will prompt you to confirm the upgrade. After confirming, the firmware upgrade will automatically complete within 3 minutes.



### Device Calibration:

After the firmware upgrade is complete, the device will automatically restart. Once the device restarts, it will prompt you to go through the setup process again. Please do not skip this setup. Follow the on-screen instructions carefully.

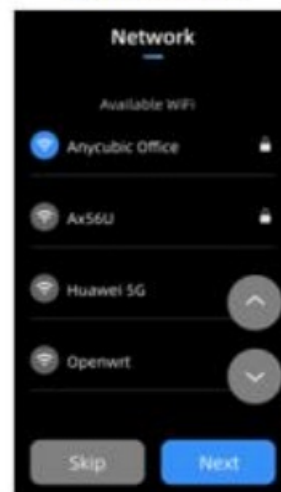
### ① Language



### ② Area



### ③ Network



### ④ Cloud



### ⑤ Complete setup



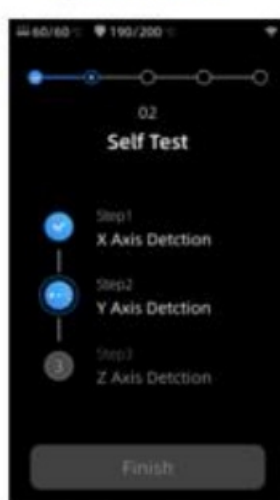
### ⑥ Start Operation Guide



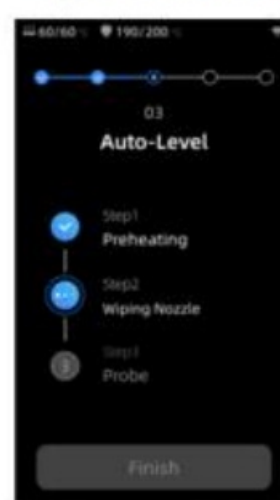
### ⑦ Insert U-Disk



### ⑧ Self Test



### ⑨ Auto-Level

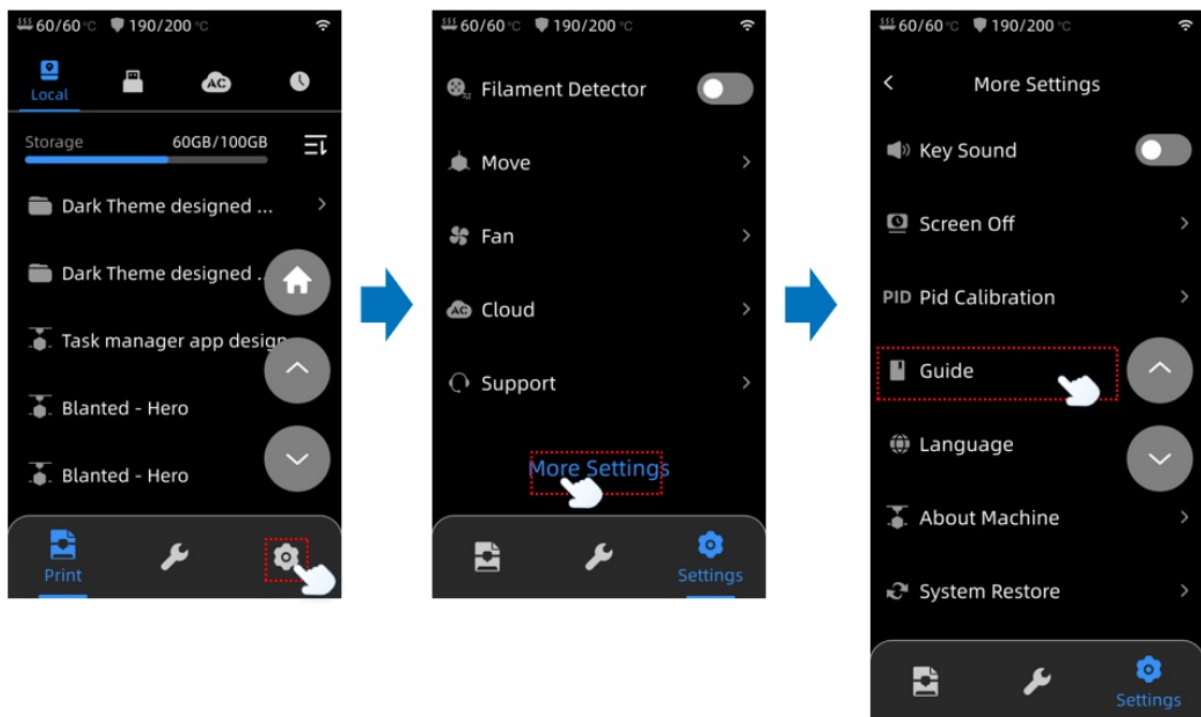




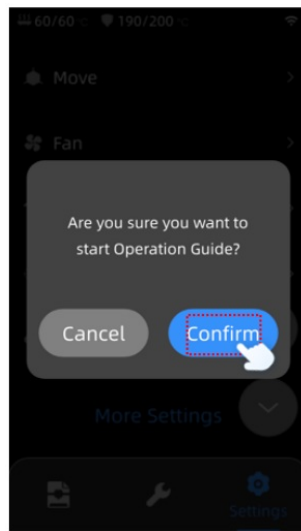


If you do not receive a prompt, follow these steps:

On the main screen, click on “Settings.” Click on “More Settings.” On the next screen, click on “Guide.” It will be asked if you want to enter the user guide; click “Confirm” to proceed. This will ensure that the device is properly calibrated after the firmware upgrade.

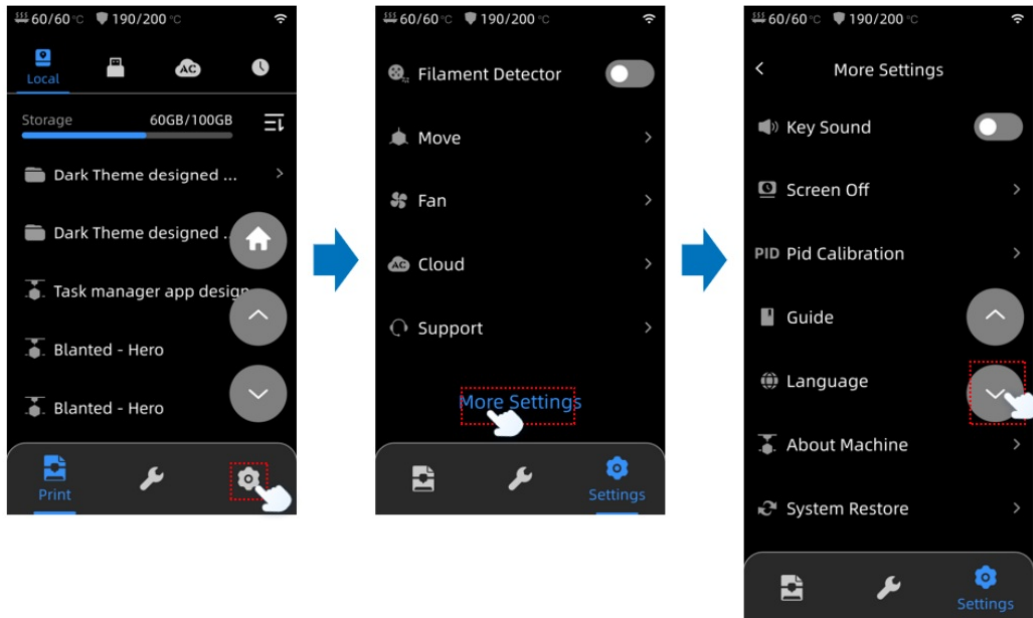


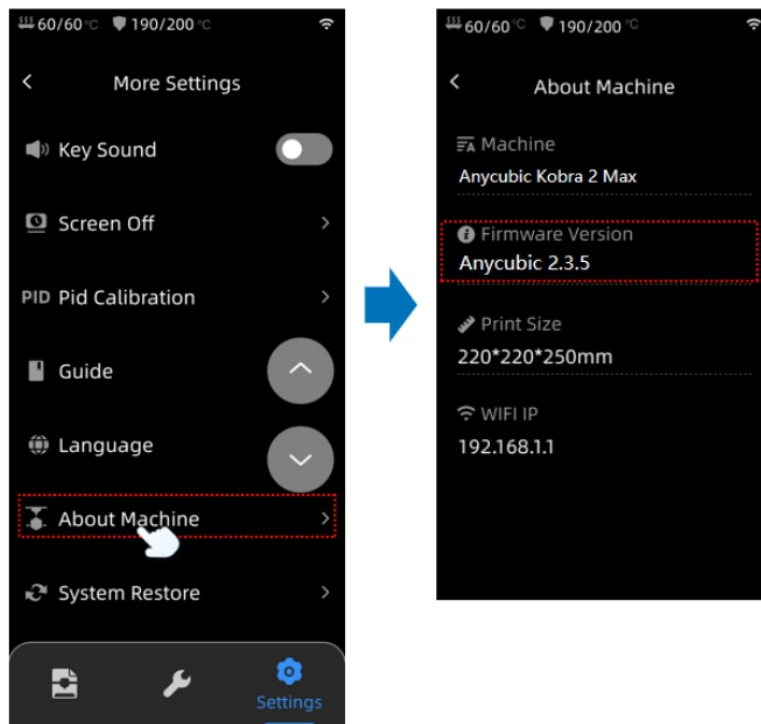




## Version Confirmation

Go to "Settings," "More Settings," "About Machine," and check if the firmware version has been successfully updated.





## Troubleshooting Guide

If there is a leveling anomaly, please follow the steps below to check:

The module is abnormal. Please calibrate the module and wiring Confirm

1. After powering off, check the wiring of the leveling calibration module to ensure it is connected properly. Then, restart the machine.
2. Press [Tools]-[Control]-[Module Calibration]-[Position Calibration]. Use the [X Move] and [Y Move] options on the screen to move the nozzle to the center point of the calibration module. Once done, click on (Save).  
Afterward, perform the leveling operation again.


### Additional Issues:

If you encounter any problems during the upgrade, we recommend that you create a support ticket. The after-sales engineers will assist you in finding a solution to the problem(Reply time :1 working day)

Please click this link to submit your ticket: [After-sales Ticket Submission Page](#)

---

## Documents / Resources

	<p><b><a href="#">ANYCUBIC Kobra 2 Max Large and Automatic Leveling Desktop</a></b> [pdf] User Guide Kobra 2 Max Large and Automatic Leveling Desktop, Kobra 2 Max, Large and Automatic Leveling Desktop, Automatic Leveling Desktop, Leveling Desktop</p>
---	--

References

- [🔗 Problem processing \(work order\) submission platform](#)
- [User Manual](#)