



Anycon Q1 Remote Control User Manual

[Home](#) » [Anycon](#) » Anycon Q1 Remote Control User Manual 

Contents

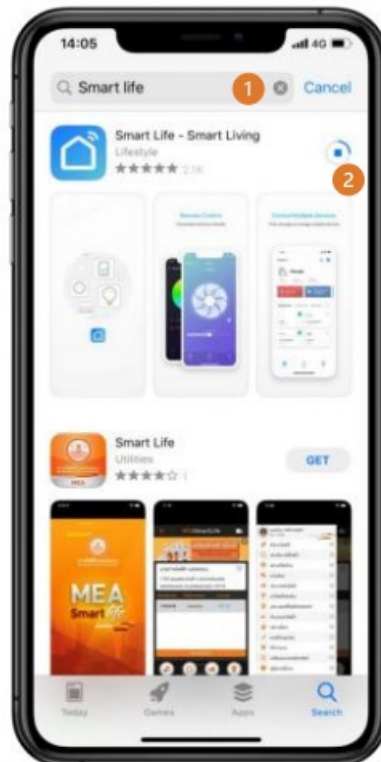
- [1 Anycon Q1 Remote Control](#)
- [2 Install 'Smart Life' APP](#)
- [3 Turn Centron into pairing mode](#)
- [4 Setup your Centron Part 3](#)
- [5 Add your device to Centron Part 1](#)
- [6 Third-party control](#)
- [7 FCC Statement](#)
- [8 Documents / Resources](#)
- [9 Related Posts](#)

Anycon

Anycon Q1 Remote Control

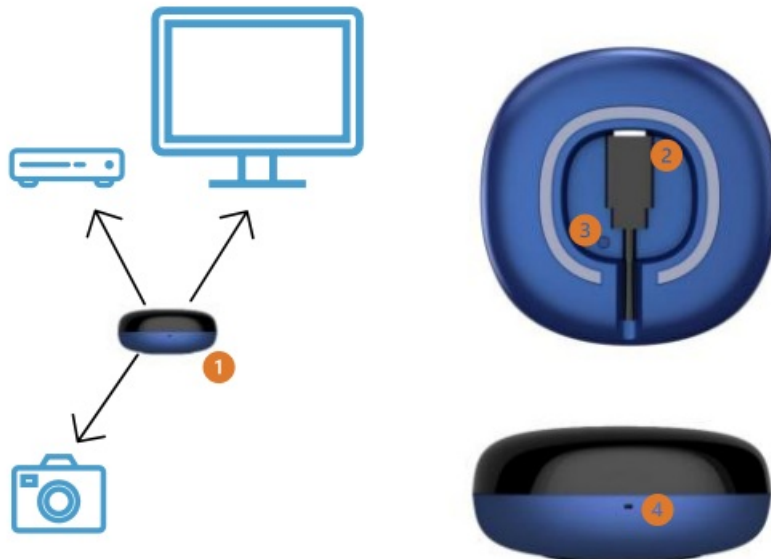


Install 'Smart Life' APP



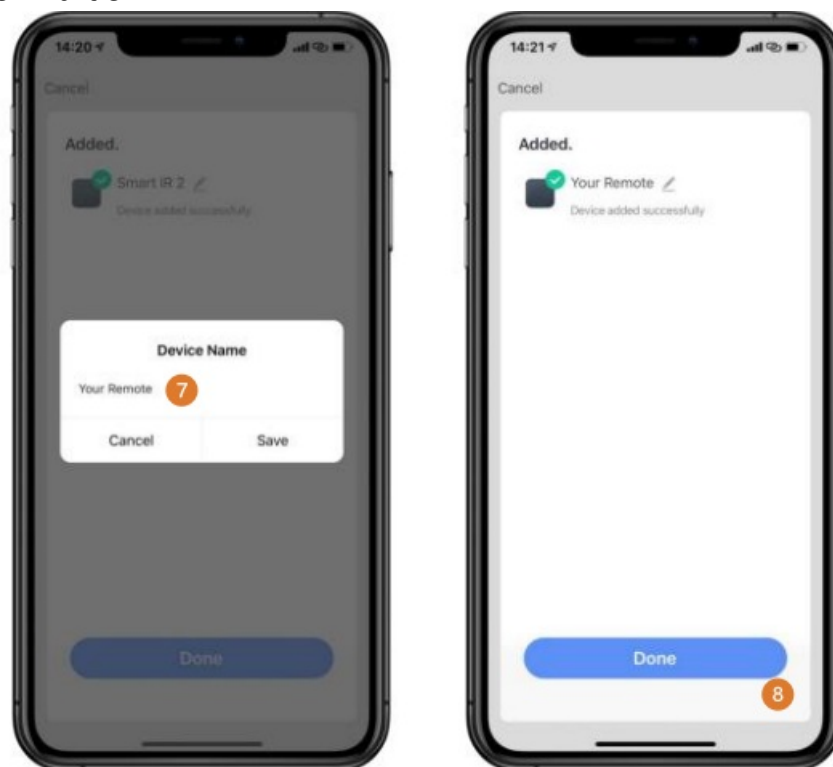
1. Search 'Smart Life' APP in your Application store
2. Install the 'Smart Life' APP

Turn Centron into pairing mode



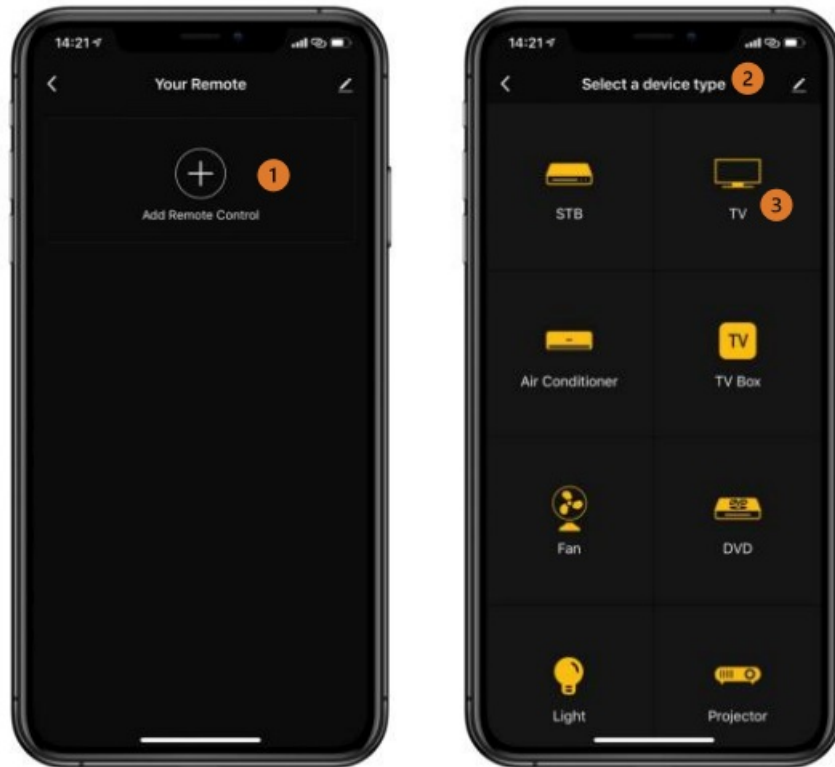
1. Find Centron a place where it can cover all appliances that you want it to control without blockage.
2. Power up Centron by inserting a USB cable into it. A 5V /1A adaptor is needed at the other end.
3. Press and hold this button when Centron is powered on.
4. Until this indicator blink fast which shows Centron is now in the pairing mode

Setup your Centron Part 3



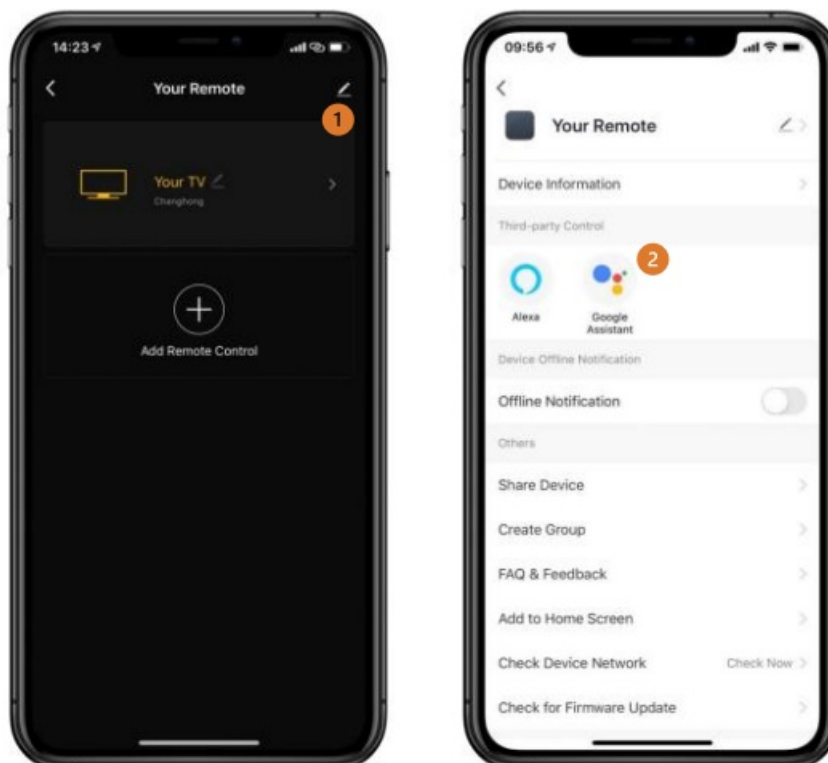
- Name your Centron and save it.
- Click the 'Done' button to finish the setup.

Add your device to Centron Part 1



1. Click the plus button to add the Remote control function.
2. Chose the type of device that you want to control by Centron.
3. E.g, Click the TV icon too if you want Centron to control your TV and chose the Brand of your TV in the upcoming list.

Third-party control



1. Click the upright corner 'Edit' icon on your Centron page.
2. Chose the third-party Control you would like to use and click the button, follow the instruction to add Centron into your Third-party account.

FCC Statement

This device complies with part 15 of the FCC rules. Operation is subject to the following two conditions: (1) this device may not cause harmful interference, and (2) this device must accept any interference received, including interference that may cause undesired operation. Changes or modifications not expressly approved by the party responsible for compliance could void the user's authority to operate the equipment. NOTE: This equipment has been tested and found to comply with the limits for a Class B digital device, pursuant to part 15 of the FCC Rules. These limits are designed to provide reasonable protection against harmful interference in a residential installation. This equipment generates uses and can radiate radio frequency energy and, if not installed and used in accordance with the instructions, may cause harmful interference to radio communications. However, there is no guarantee that interference will not occur in a particular installation. If this equipment does cause harmful interference to radio or television reception, which can be determined by turning the equipment off and on, the user is encouraged to try to correct the interference by one or more of the following measures:


1. Reorient or relocate the receiving antenna.
2. Reorient or relocate the receiving antenna.
3. Reorient or relocate the receiving antenna.
4. Consult the dealer or an experienced radio/TV technician for help with important announcements Important

Note:

Radiation Exposure Statement

This equipment complies with FCC radiation exposure limits set forth for an uncontrolled environment. This equipment should be installed and operated with a minimum distance of 20cm between the radiator and your body. This transmitter must not be co-located or operating in conjunction with any other antenna or transmitter.

Documents / Resources

	<p>Anycon Q1 Remote Control [pdf] User Manual Q1, RYG-Q1, RYGQ1, Q1 Remote Control, Remote Control</p>
---	--