



## AnyCast M2 Wifi Display Receiver User Manual

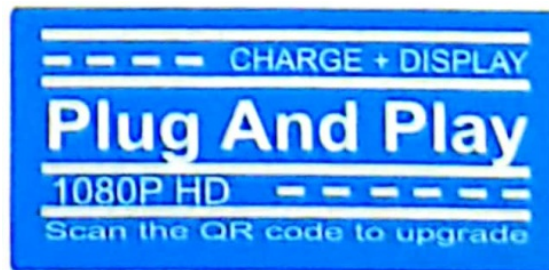
[Home](#) » [AnyCast](#) » AnyCast M2 Wifi Display Receiver User Manual 



AirPlay Box



User Manual



### Contents

- [1 Product details](#)
- [2 Introduction](#)
- [3 Connection diagram](#)
- [4 iOS system operation steps](#)
- [5 Android system operation steps](#)
- [6 Documents / Resources](#)
  - [6.1 References](#)
- [7 Related Posts](#)

### Product details

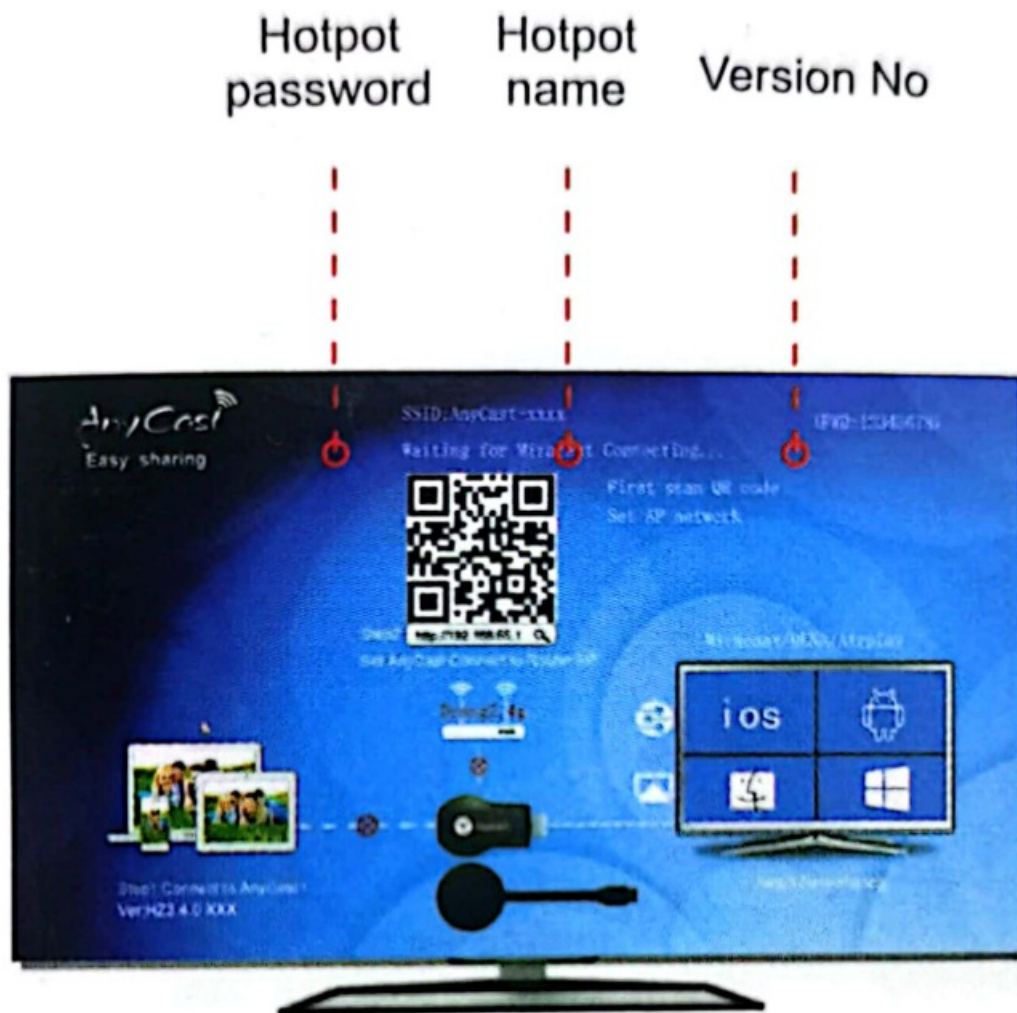
Mobile phones and flat-panel HDTV co-screen devices support all interfaces of mobile phones and flat panels. via WIFI settings can be used to project content on a mobile phone or flat screen to a high-definition television or projector. Film machines, such as movies, TV programs, music, video, audio, photos, video clients, Safari browser, Chrome browser and other contents can be implemented. No longer use a small screen Act or trumpet

to amuse yourself, from now on you can share happiness with your family and friends through this product.

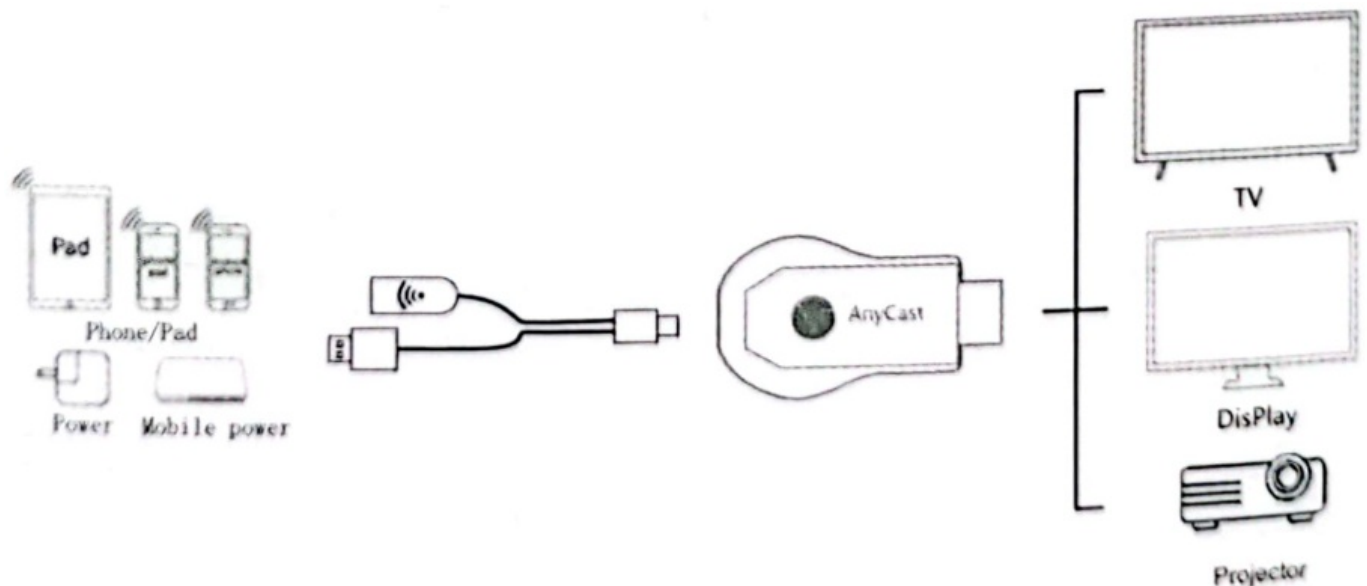
- Support IOS 8.0 or above system and compatible with the following devices:  
iPhoneXR/XS/XSMax/X/8P/8/11/11PRO,iP7Plus,iP7,iP6sPlus,iP6S,iP5,iP5s, ipSSE,iPotouch and all of the iPad with lightning interface.
- Support Android 6.0 or above system, such as Samsung,Huawei, VIVO,OPPO, Millet, OnePlus, SMARTISAN,MEIZU etc.
- Support HDTV and VGA simultaneous display

Specification:	Parameter
Main chip:	011350C
WIFI work frequency:	G/2.4G
Operation system:	Android 6.0 Lite
RAM:	256MB
Memory:	256MB
Resolution:	1080P
Transmission speed:	Basic rate is 1Mbps in LE mode
Protocol standard:	802.11a
Interface device :	HDTV/USB/Micro
Video format:	WMV/AV/3GP/MP4
Power :	5V/1A

## Introduction



Connection diagram



## iOS system operation steps

**Method 1:** [OS directly connect (No need WIFI.If need WIFI, pls refer to method 2)

1. Click the WIFI in the setting page, then find the hotpot of AnyCast-xxxx Cast to connect the device: For example:  
AnyCast-%0x fixed password: 12345678



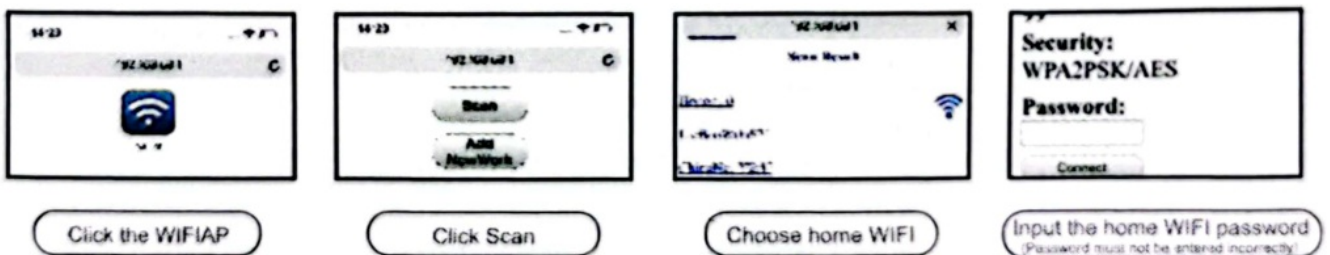
- Slide the screen into the Apple Device Control Center. Click on the screen image and check the 2in 1 Cast device.




**Notes:** If Apple device not connect the WIFI, can only mirror local data or use the operating network to access the Internet

#### Method 2: iOS system connect the router

- Click the WIFI in the setting page, then find the hotspot of AnyCast-x0x to connect the device (if use the method 1 to connect, pls exit the "Mirror image")
- Open browser, input 192.168.68.1 and enter the setting page as show in below pictures



- Slide the screen into the Apple Device Control Center. Click on the screen image and check the AnyCast-w0x device.

(**Note:** open the video APP and click  to send the APP video to the big screen without affecting other operations of the phone)

### Android system operation steps

#### Method 1: Android system directly connect

Open the projection function of mobiletablets search and connect AnyCast- on device

Protection function path for different device

Huwei Drop-down menu-wireless projection/multi-screen interactive

Millet Settino-more ways to link—wireless display

VIVO. Settino-more ways to link-wireless display

OPPO Settina-more ways to link—wireless display/multi-screen interactive

MEIZU. Setting-display-projection screen

Lenovo: Setting-display-wireless display

Samsung: Slide the mobile from top to bottom—Smart View

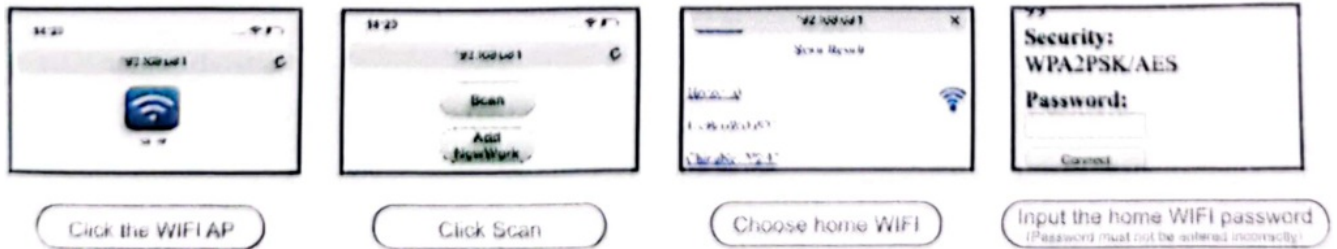
SMARTISAN: Wireless network-wireless display


Nubia: Screen projection

#### Method 2: Android system connect the router

- Click the WIFI in the setting page, find the hotspot of AnyCast-xxxx to connect the device  
(if use the method 1 to connect, pls exit the "Miracst". That is, press Reset button for 3 second)

2. Find the browser, input 192.168.68.1, and enter the setting page as show in below pictures



3. After completing above settings, open the video App.click  to project the APP video onto big screen. Does not affect other operations of the phone.

### FCC Warning:

This equipment has been tested and found to comply with the limits for a Class B digital device, pursuant to part 15 of the FCC Rules. These limits are designed to provide reasonable protection against harmful interference in a residential installation. This equipment generates, uses and can radiate radio frequency energy and, if not installed and used in accordance with the instructions, may cause harmful interference to radio communications. However, there is no guarantee that interference will not occur in a particular installation. If this equipment does cause harmful interference to radio or television reception, which can be determined by turning the equipment off and on, the user is encouraged to try to correct the interference by one or more of the following measures:

- Reorient or relocate the receiving antenna.
- Increase the separation between the equipment and receiver.
- Connect the equipment into an outlet on a circuit different from that to which the receiver is connected.
- Consult the dealer or an experienced radio/TV technician for help.

**Caution:** Any changes or modifications to this device not explicitly approved by manufacturer could void your authority to operate this equipment.

This device complies with part 15 of the FCC Rules. Operation is subject to the following two conditions:

(1) This device may not cause harmful interference, and (2) this device must accept any interference received, including interference that may cause undesired operation.

This equipment complies with FCC radiation exposure limits set forth for an uncontrolled environment. This equipment should be installed and operated with minimum distance 20cm between the radiator and your body.



## Documents / Resources

  AirPlay BOX User Manual  	<a href="#">AnyCast M2 Wifi Display Receiver</a> [pdf] User Manual 2BEKK-M2, 2BEKKM2, M2, M2 Wifi Display Receiver, Wifi Display Receiver, Display Receiver, Receiver
--	--

## References

- [User Manual](#)

[Manuals+](#), [Privacy Policy](#)