

Type	IP	DHCP	Version	MAC	Comment
Wireless Bolt	192.168.0.99	Disabled	1.6.3	00-30-11-24-4A-C3	
Anybus Communicator IIoT	192.168.0.156	Disabled	3.03.01	00-30-11-27-B2-F0	

Anybus HMS IP Configurations User Manual

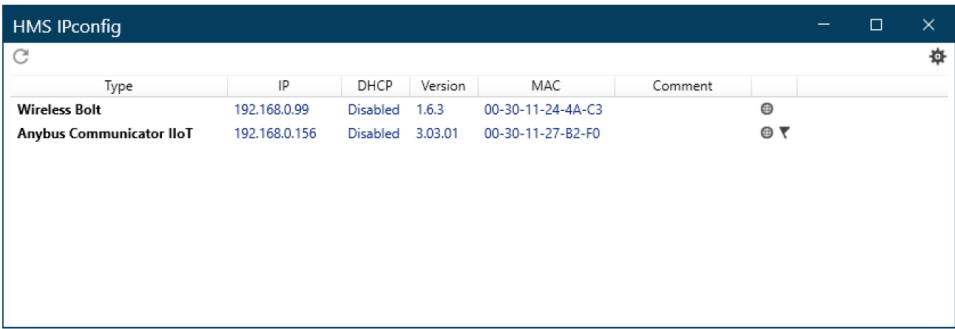
[Home](#) » [Anybus](#) » Anybus HMS IP Configurations User Manual 

Contents

- 1 Anybus HMS IP Configurations
- 2 Installation
 - 2.1 Scanning for Connected Devices
- 3 Device Configuration
 - 3.1 IP and DNS Configuration
 - 3.2 Scan Settings
- 4 Documents / Resources
- 5 Related Posts



Anybus HMS IP Configurations



Type	IP	DHCP	Version	MAC	Comment
Wireless Bolt	192.168.0.99	Disabled	1.6.3	00-30-11-24-4A-C3	
Anybus Communicator IIoT	192.168.0.156	Disabled	3.03.01	00-30-11-27-B2-F0	

About HMS IPconfig

IPconfig is a Windows-based tool for configuration of TCP/IP settings in HMS devices. IPconfig will detect all compatible and active HMS devices on the local network.
The devices do not have to be on the same Ethernet subnet as the computer running IPconfig.

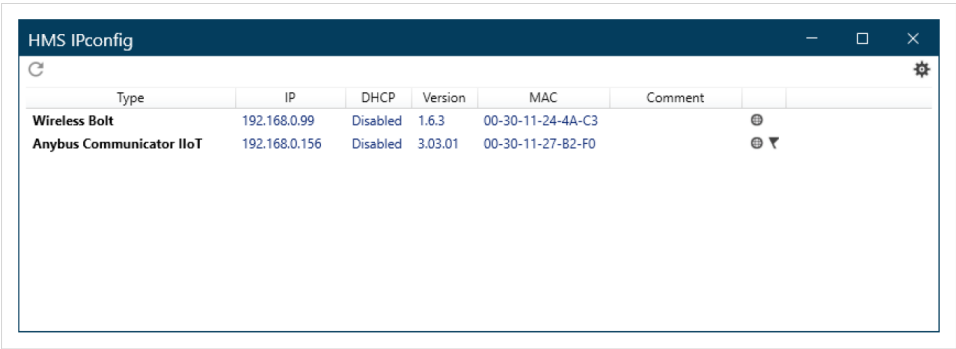
Installation

1. Download IPconfig from www.anybus.com/support.

2. Unpack the contents of the zip archive and run the installer program.





Scanning for Connected Devices

When IPconfig is started it will automatically scan for compatible and active HMS devices. To change the IP configuration for a device, click on the device in the list.

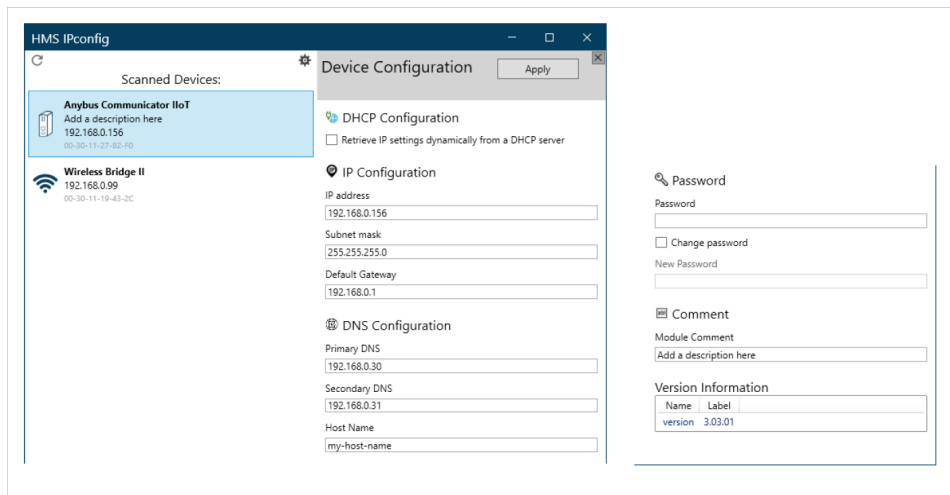


- IPconfig device list

Web-interface Icons

Icon	Function	Description
	Refresh	Refresh the device list
	Options	Change the scan settings
	Web	Open the device in the default web browser
	Wink	Flash LED indicators on the device (if supported by the device)

Device Configuration



- Ethernet configuration

The available configuration settings depend on the selected device. After editing the configuration, click on Apply to apply the new settings and reboot the device.

IP and DNS Configuration

IMPORTANT

If there is no DHCP server available on the network, do not enable DHCP. IP and DNS settings can be configured manually or dynamically using DHCP.

Change Password

IMPORTANT

For security reasons the default password should always be changed. To set a new password:

1. Select the Change password checkbox.
2. Enter the current password in the Password field.
3. Enter the new password in the New password field.

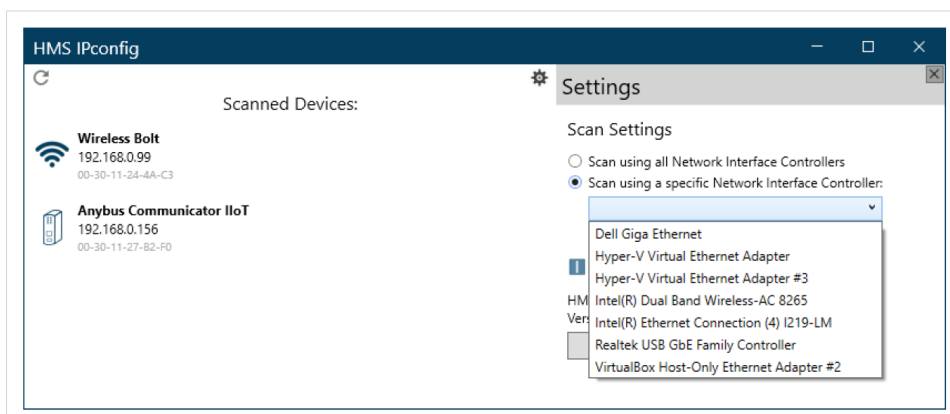
Comment

This field can be used to add a name or description of the device for easier identification. The comment is not uploaded to the device.

Version Information

Additional information about the device. This field cannot be edited.


Scan Settings



- IPconfig scan settings

IPconfig can be configured to scan for devices using only a specific network interface. The default setting is to scan using all network interfaces. The scan settings are saved when you exit IPconfig. If no devices are detected when you start up IPconfig, check this settings and change it to Scan using all Network Interface Controllers, then refresh the device list.

Documents / Resources

	<p>Anybus HMS IP Configurations [pdf] User Manual HMS IP Configurations, HMS IP, Configurations, IP Configurations</p>
---	--