



Anviz VF30 Pro PoE Standalone Access Control User Guide

[Home](#) » [ANVIZ](#) » Anviz VF30 Pro PoE Standalone Access Control User Guide 

Contents

- [1 Anviz VF30 Pro PoE Standalone Access Control](#)
- [2 Packing list](#)
- [3 Installation Diagram & Installation Step](#)
- [4 VF30 Pro & Anviz SC011](#)
- [5 VF30 Pro & Access Control Power Supply](#)
- [6 Operation Guide](#)
- [7 Communication Setting](#)
- [8 Working with Management Software](#)
- [9 The Management Software CrossChex Features](#)
- [10 Documents / Resources](#)
 - [10.1 References](#)
- [11 Related Posts](#)



Anviz VF30 Pro PoE Standalone Access Control



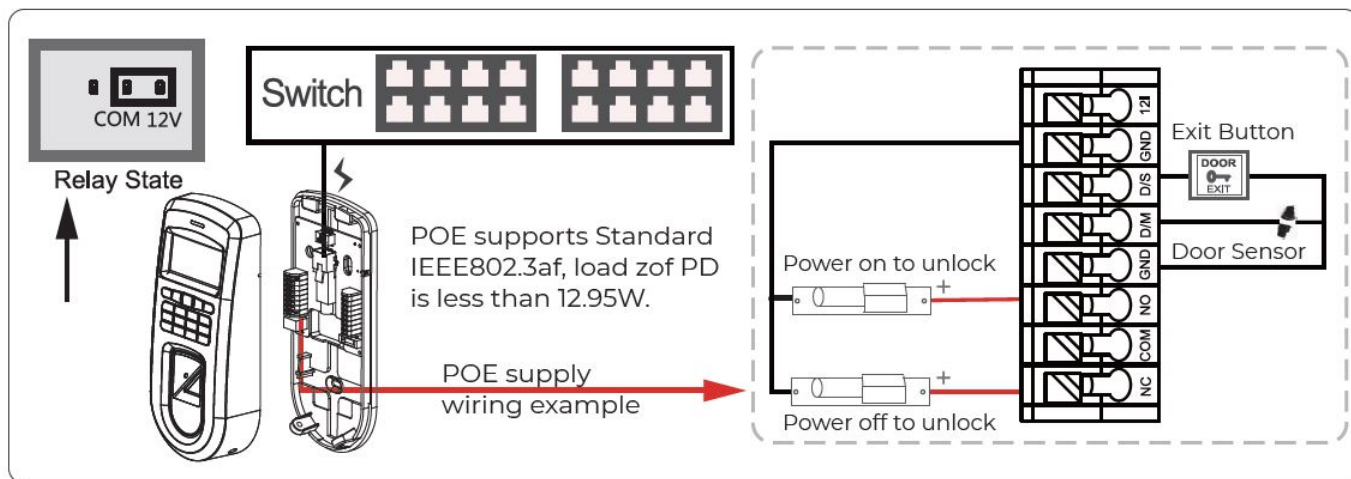
Packing list

 <p>VF30 Pro</p>	 <p>Quick Guide</p>	 <p>Accessory Package</p>
--	---	---

Installation Diagram & Installation Step

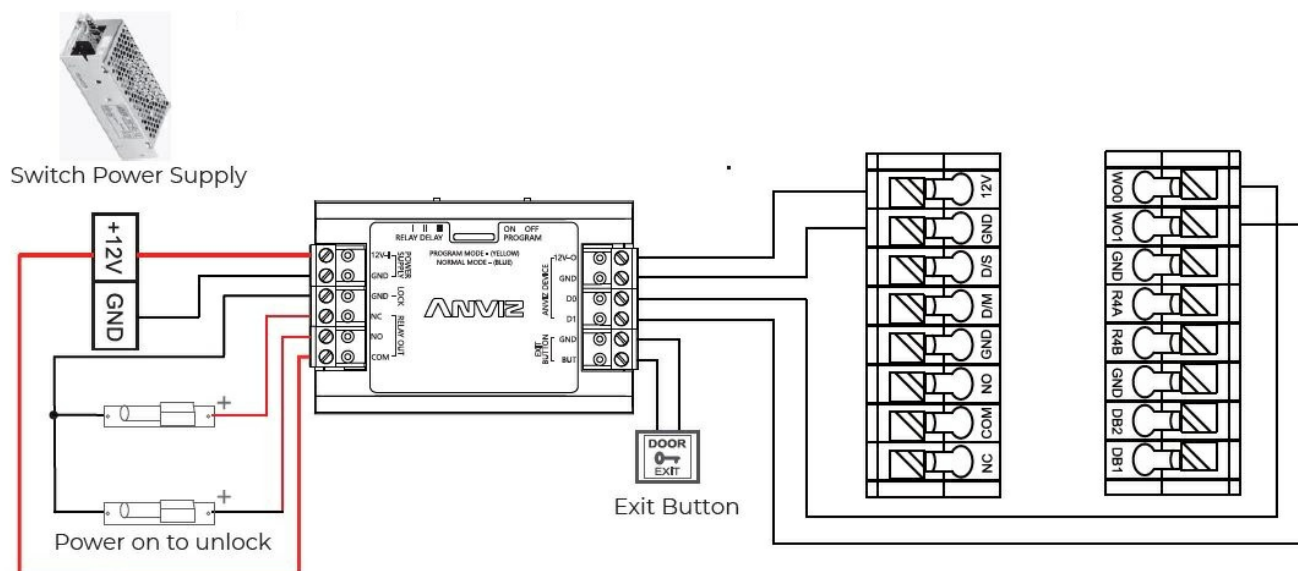
Install the Device

1. Mount the back panel on wall and connect related cables.
2. Fix the device from the bottom and screw it.
3. Installation done.

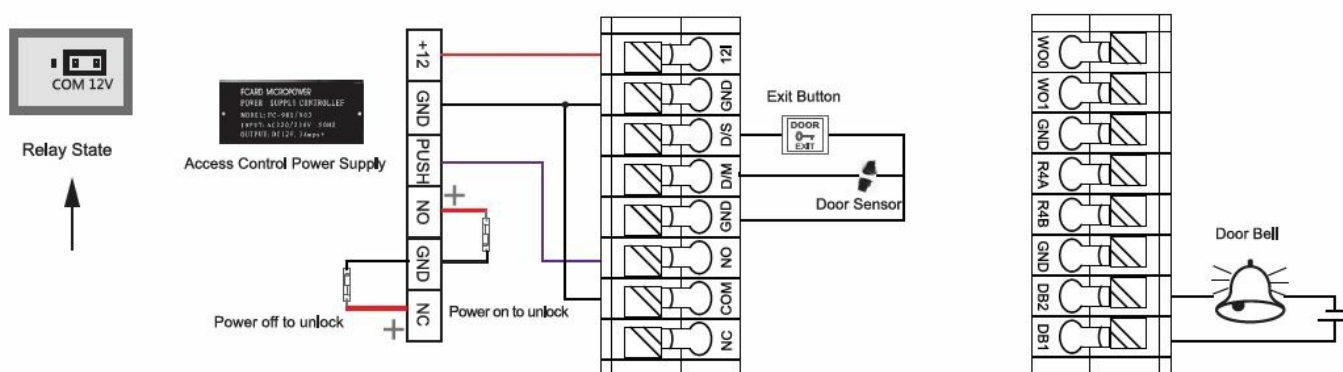


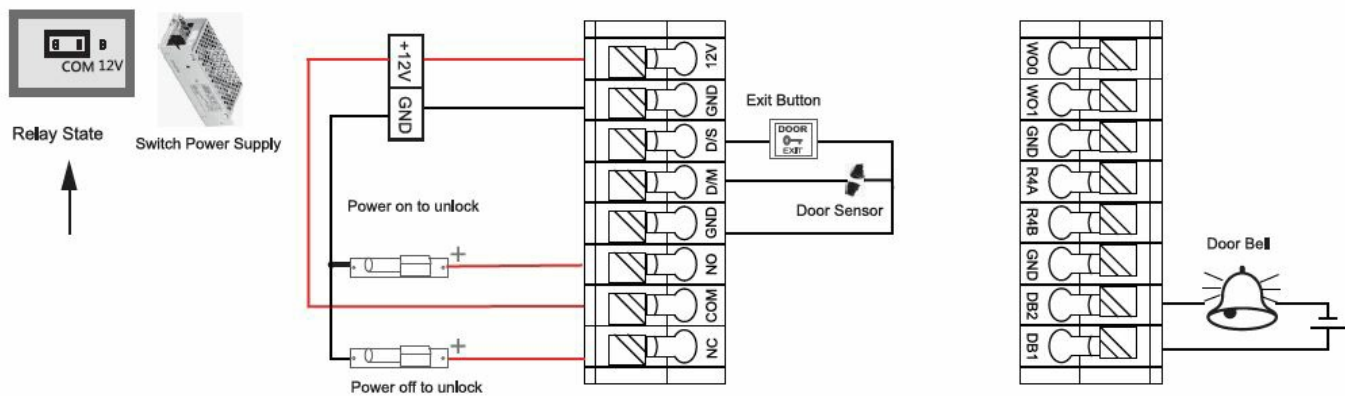
VF30 Pro & Anviz SC011

- SC011 only accepts encrypted wiegand signal by Anviz to ensure the high security level.
- Check <https://www.anviz.com/products/sc011-access-controller.html> for more SC011 information.



VF30 Pro & Access Control Power Supply





Operation Guide

Basic Settings



Go to Setting/Time menu to set up date and time.

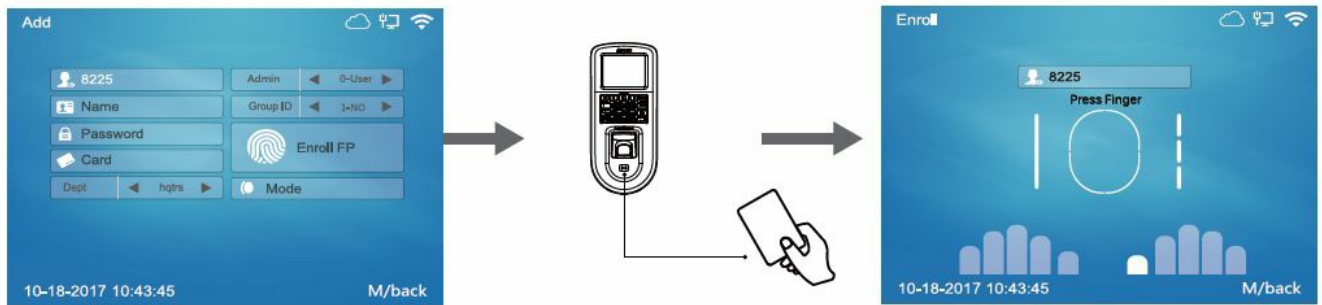


- Press [M] key and input '0' as ID and '12345' as password to log into the Menu.
- Click the Setting/Device menu to view or edit the Device ID and Admin PIN code.

Tips *0/12345 is the default Admin ID and password. You can change to your own the password or set other user as Admin later.

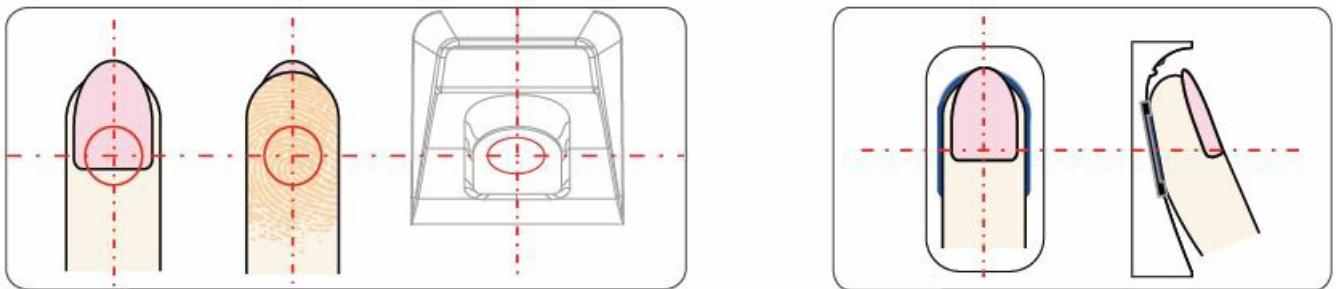
Add User

- Go to 'User' – 'Add' menu. Fill the User ID and press 'OK' move to next bar to fill the user info.
- Swipe the card at card sensor area to let the device read the card number. Then move to 'Enroll FP' section, and click [OK] button.
- Scan the same finger three times to enroll the fingerprint. Scanning all ten fingers are not necessary.



Correct Method:

- Place finger in the center of the sensor.
- Place finger flatly and smoothly on the sensor.



Incorrect Method:

- Finger is not placed on the center of the sensor.
- Finger placed inclined.
- Use fingertip.



Character Input Method

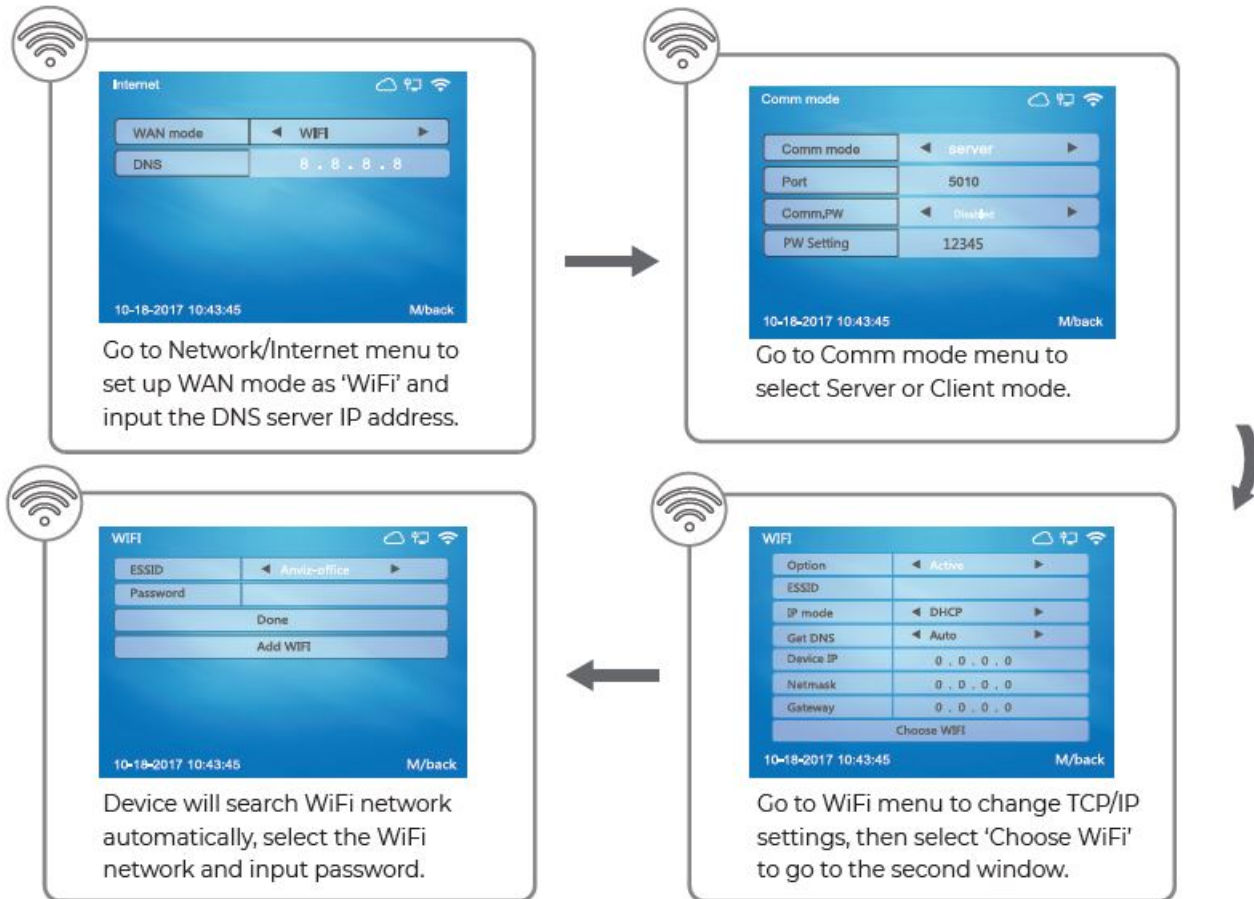
- Use the left[<] / right[>] button to move the cursor to the area you want to edit.
- Press the [Fn] button to active the character input mode. You will see "Aa" at the bottom of the screen.
- Use left[<] and right [>] button to switch between "Aa", "123", "!" and "Picture", you can select different option to enter letters, numbers, or special characters.

Communication Setting

- Enter to the Network menu, and Ethernet to adjust Ethernet settings.
- Switch to 'Network' -> 'Comm Mode', to change client or server mode by your needs.

- Adjust IP address on management computer. For instance, device IP address is 192.168.0.218, then make sure the management computer IP address as 192.168.0.xxx (xxx can be any numbers, but different than 218).
- When the device has WiFi function, it is suggested that the device is installed as far away from the metal parts as possible. The distance between the installation location of the device with WiFi function and the router should be within 30m.

WiFi Settings (Optional)



Ethernet Settings



Go to Network menu.



Go to Internet menu to set up WAN mode as 'Ethernet' and input the DNS server IP address.



Go to Ethernet menu to change TCP/IP settings.

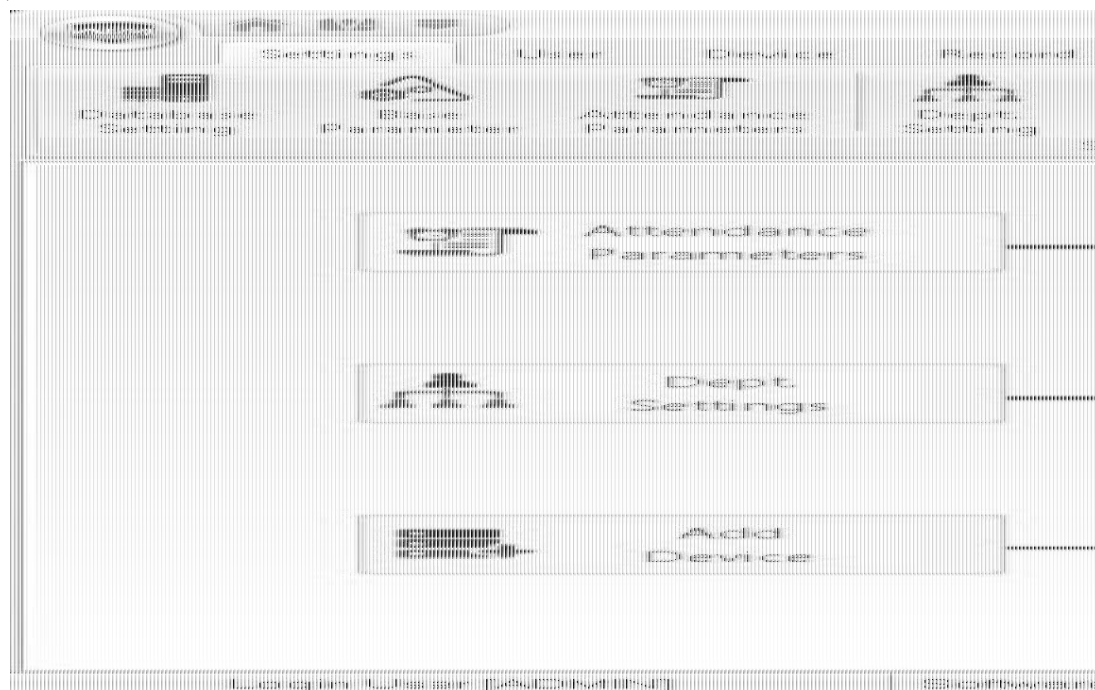


Go to Comm Mode menu to select Server or Client mode.

Working with Management Software

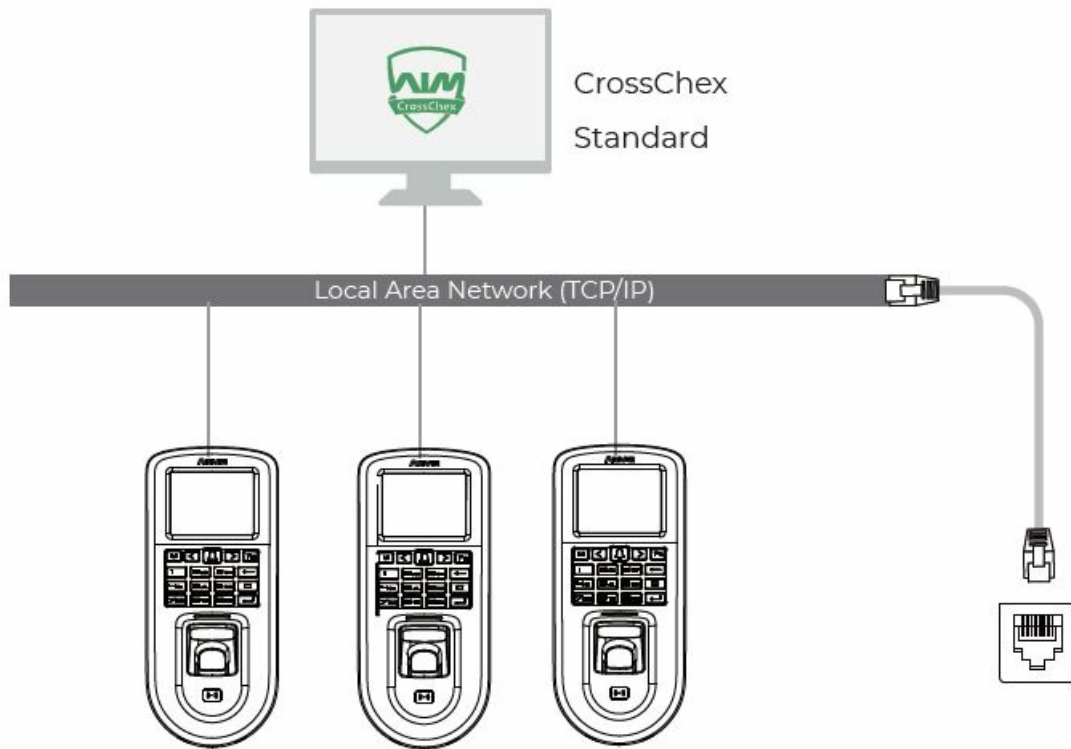
Working with Management Software

Scan the QR code on user manual to install the software.



How to connect the Device with Software?

Method One: Connect to Network



Method Two: Connect to Cloud

VF30 Pro can be managed by Anviz cloud management platform CrossChex cloud. For more details, please refer to <http://www.anviz.com/product/crosschex/cloud.html>

Enable Communication between Device and the Management Software CrossChex

- Run the management software CrossChex.
- Go to Device tab. Search and Add the device to management software CrossChex.
- Click Synchronize Time button to communicate with Device. If Synchronize is successful, the device icon will turn to blue.

The Management Software CrossChex Features

- **Device->Backup User:** Download user info from Device to CrossChex.
- **Device->Download Records:** Download records from Device to CrossChex.
- **User->Modify:** Edit name or other user info. Then click 'Upload User' to Upload user info to device.
- **Record->Search:** Search and view the records.
- **Attendance:** Calculate, Search results and Generate reports.
- **Data->Backup Database:** Backup Database.
- **Setting->Shift:** Set up Time Table and Scheduling.
- **Device->Device Parameter:** Set up device. Clear records on Device or Reset Device to factory settings.



Scan the QR code to
download CrossChex.

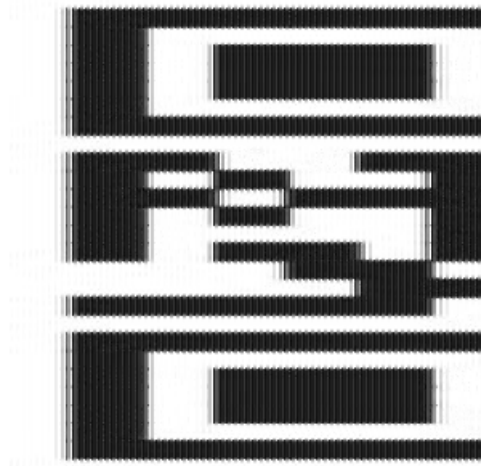


Its Never Too Late To Change

Dear Customer:

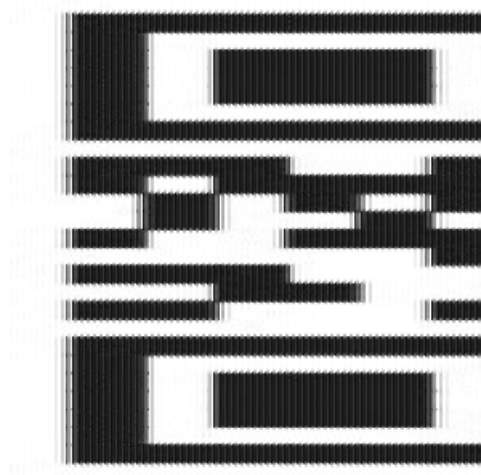
- Thank you for choosing Anviz products. As the world's leading provider of security equipment and systems. Anviz has always attached great importance to environmental protection, we are promoting various environmental improvement measures in the circle of production, packaging and sales.
- As the saying goes "It's Never Too Late To Change" –Every Year, Anviz has been burning millions of CDs and supplying world wide with our devices. In order to protect the environment, Anivz has decided to go "CD Free" campaign since June 1st 2019. We will provide QR code for you to download the electronic documents to make sure that you understand how to install and use Anviz devices.
- Anviz appreciates your understanding and supporting our small efforts towards protecting the natural resources.

Dropbox



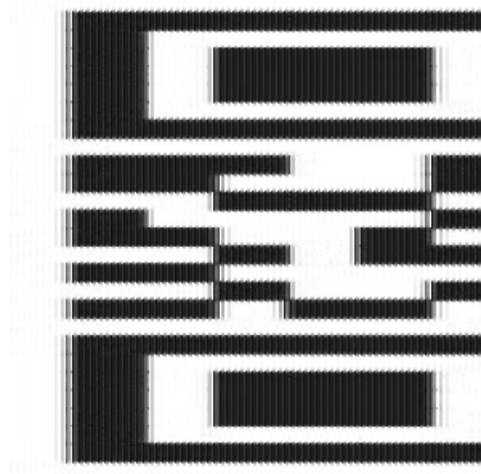
<https://bit.ly/2WugbYp>

Google



<https://bit.ly/2Vn0wh6>

Anviz




<https://bit.ly/2J9qA95>

- Anviz brand and product are trademarked and protected under law of the United States.
- Unauthorized use is prohibited For more information, please visit www.anviz.com , or send email to sales@anviz.com for more help.
- ©2020 Anviz Global Inc. All Rights Reserved.




www.anviz.com

Documents / Resources

	Anviz VF30 Pro PoE Standalone Access Control [pdf] User Guide VF30 Pro PoE Standalone Access Control, VF30 Pro, PoE Standalone Access Control, Standalone Access Control, Access Control
---	---

References

-  bit.ly/2J9qA95

-  [SoftwareUpdata - Google Drive](#)
-  [Dropbox - SoftwareUpdata - Simplify your life](#)
-  [Search - Manual-Hub.com](#)

Manuals+.