



# ANVIZ M-Bio Portable Bluetooth Enabled Fingerprint & RFID Device User Guide

[Home](#) » [ANVIZ](#) » ANVIZ M-Bio Portable Bluetooth Enabled Fingerprint & RFID Device User Guide 

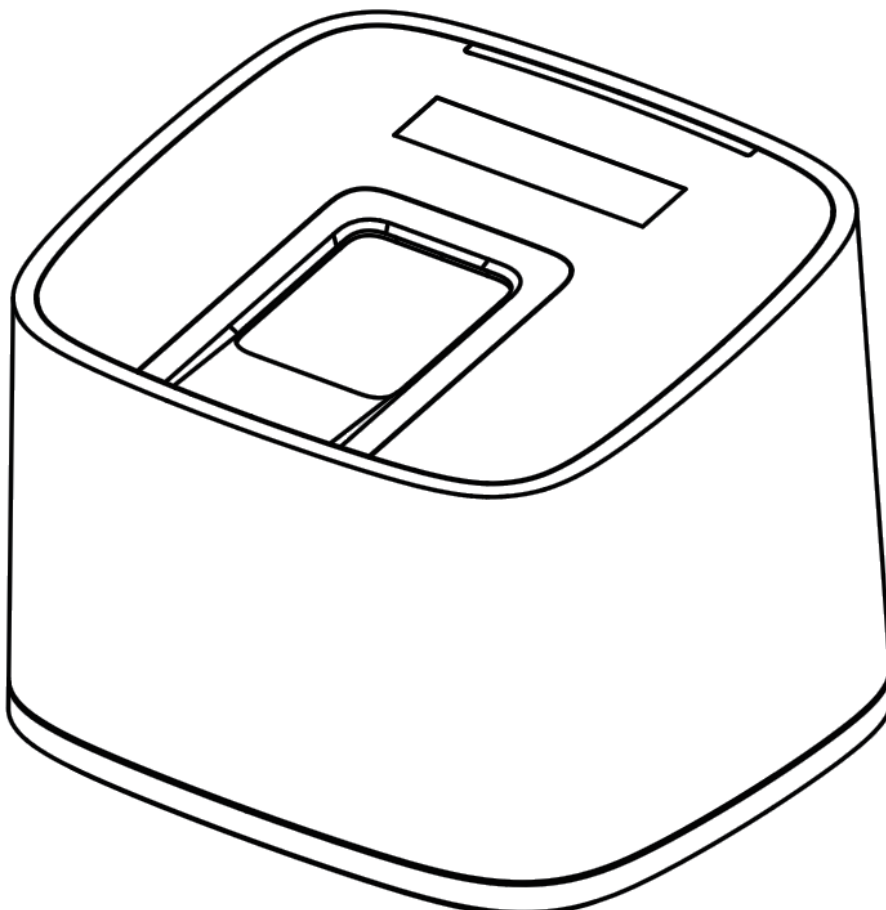


Secure Workplace, Simplify Management

M-Bio

Portable Bluetooth Enabled Fingerprint & RFID Device

Quick Guide v1.1



## Contents

- [1 Package List](#)
- [2 Illustration for Placing Finger](#)
- [3 Appearance](#)
- [4 Operation Guide](#)
- [5 Login WebServer](#)
- [6 User Register By WebServer](#)
- [7 Documents / Resources](#)
  - [7.1 References](#)
- [8 Related Posts](#)

## Package List



Device

USB Cable

Quick Guide

RFID Card

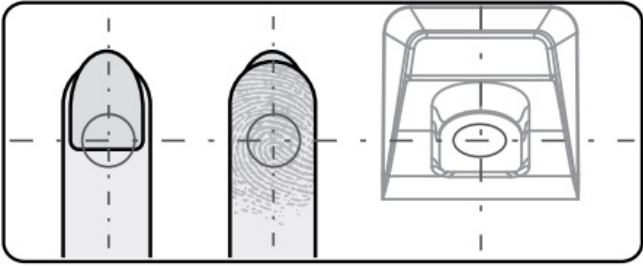
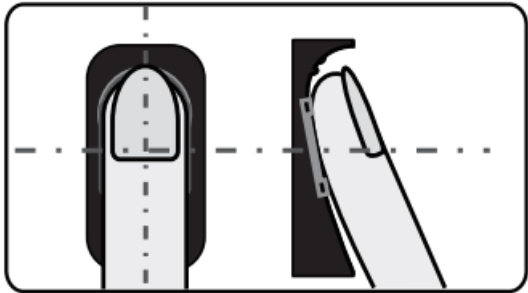
## Notification:

1. Please check if the package contains all the items listed above. Contact the distributor if there is any problem.
2. Please keep the product away from the magnetic field, and avoid causing any damage to the device.
3. Please use the original power supply or refer to the instruction to get the right power supply.
4. Please strictly follow the instructions to install the product. Any damage to it caused by incorrect operation and wiring is not under warranty.







## Illustration for Placing Finger

### Correct Method

( Straighten your finger and then place it on the sensor Ensure the finger is flat and covers the entire sensor)

Always place finger in the center of the sensor.	Try to place your finger covers the entire sensor.
	

### Incorrect Method

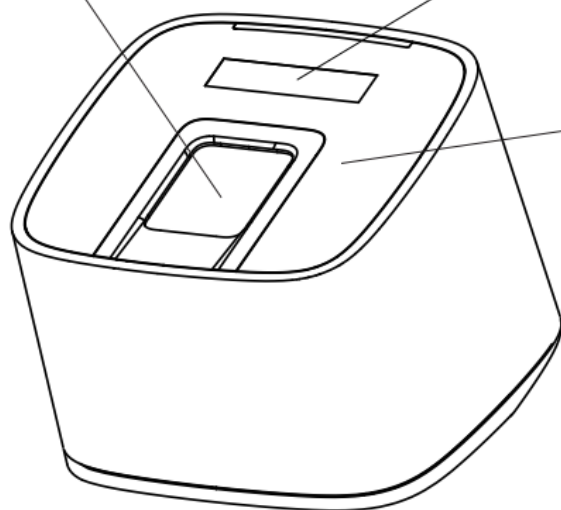
DO NOT place the finger over an excessive angle.	DO NOT place finger away from the center of the sensor.
	
DO NOT take off finger during the verification process.	DO NOT place finger at an angle.
	
DO NOT just use your fingertip.	DO NOT slide your finger during the fingerprint verification process.
	

### Appearance

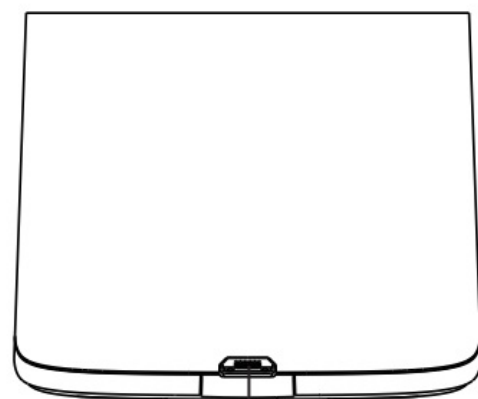
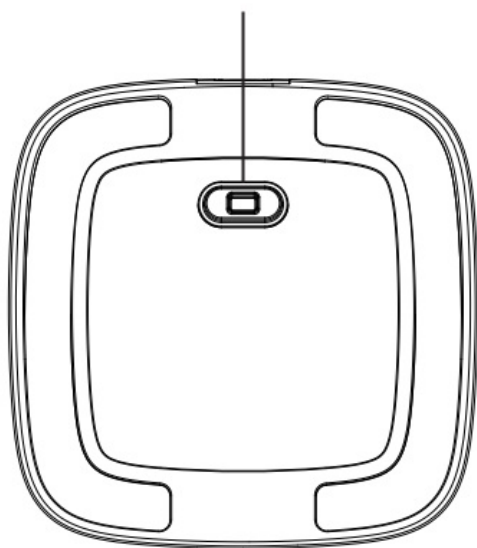
Fingerprint Sensor

OLED Screen

RFID Reader  
Area



Power  
Button



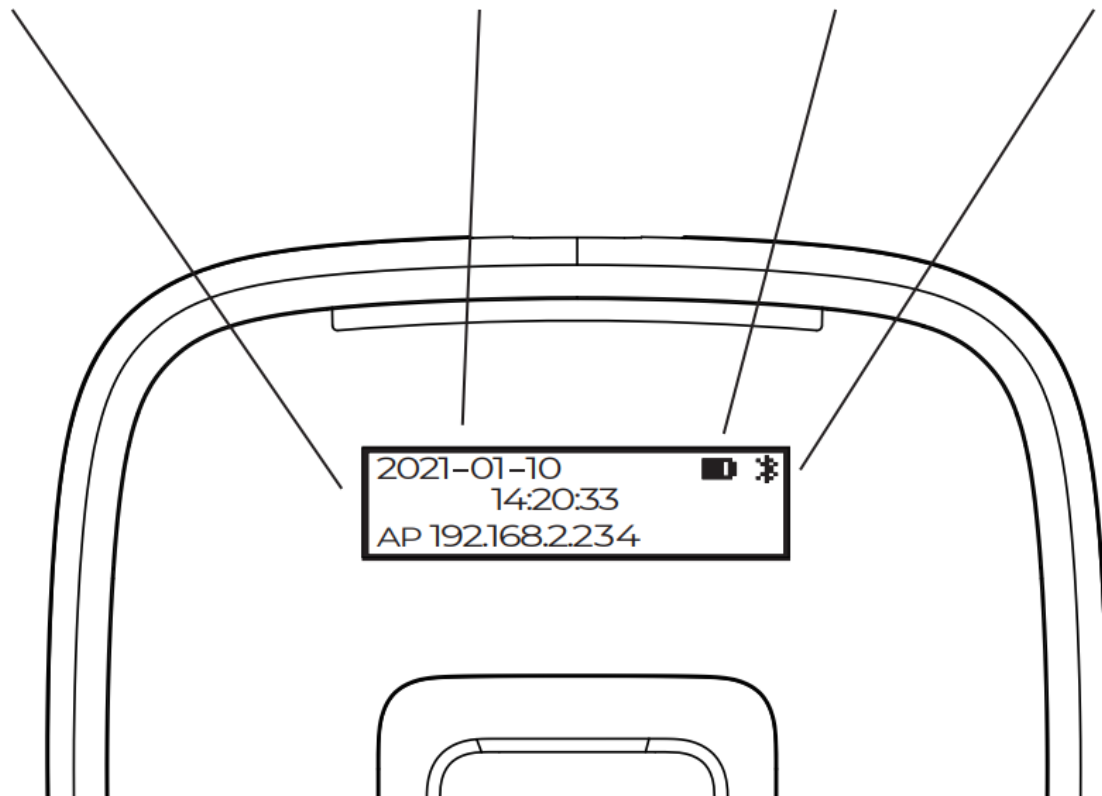
Power Over USB Port

WIFI AP Mode

Date and Time

Battery

Bluetooth



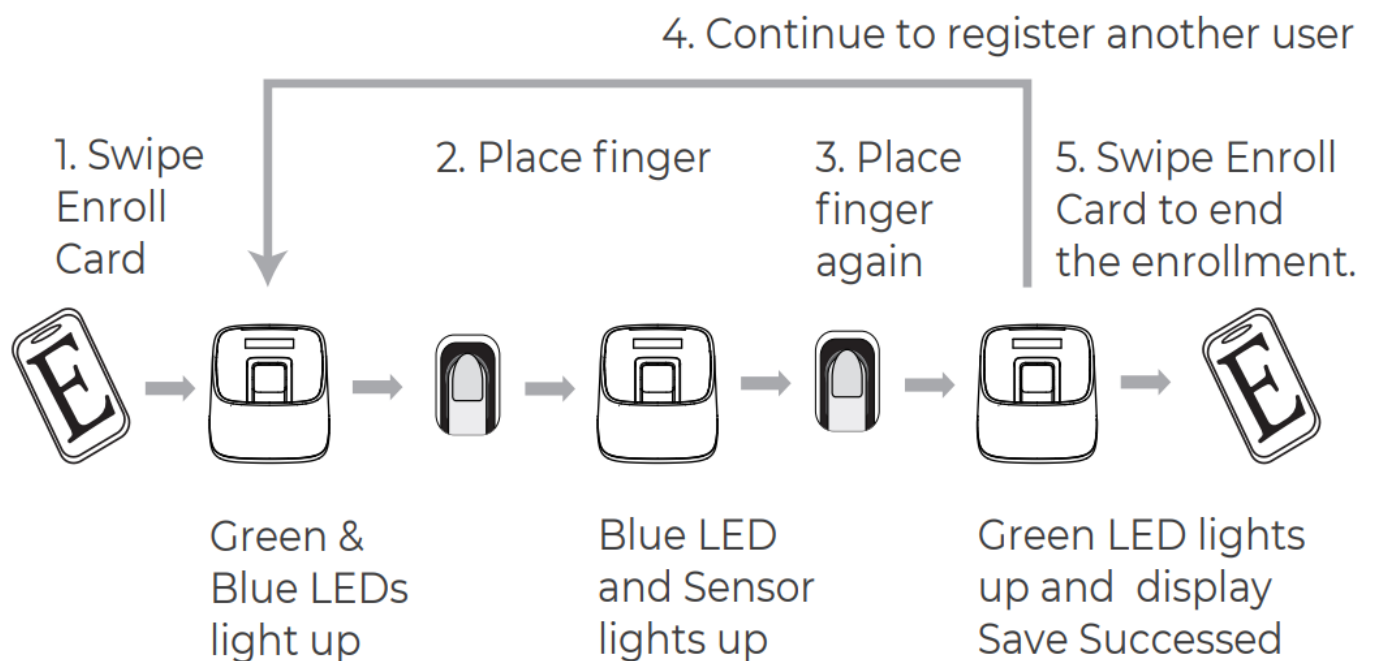
## Operation Guide

### IMPORTANT:

M-Bio is suitable for USB 5V power supply only. Plug in the power the device will automatically power on.

### Register User:

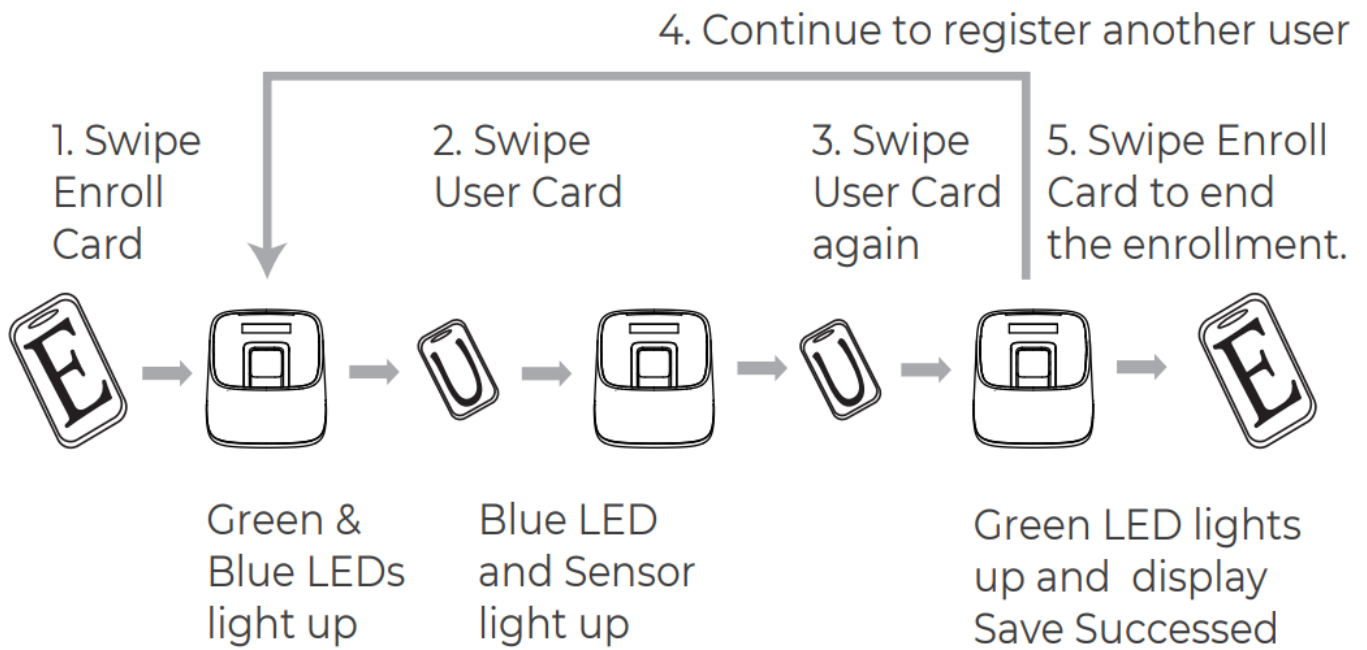
Add One Fingerprint per User Only:



1. After finish enrolling the current user, the device will continue to register another user.

2. After finish enrollment, please swipe enroll card to exit enroll status.

### Add Card Only:



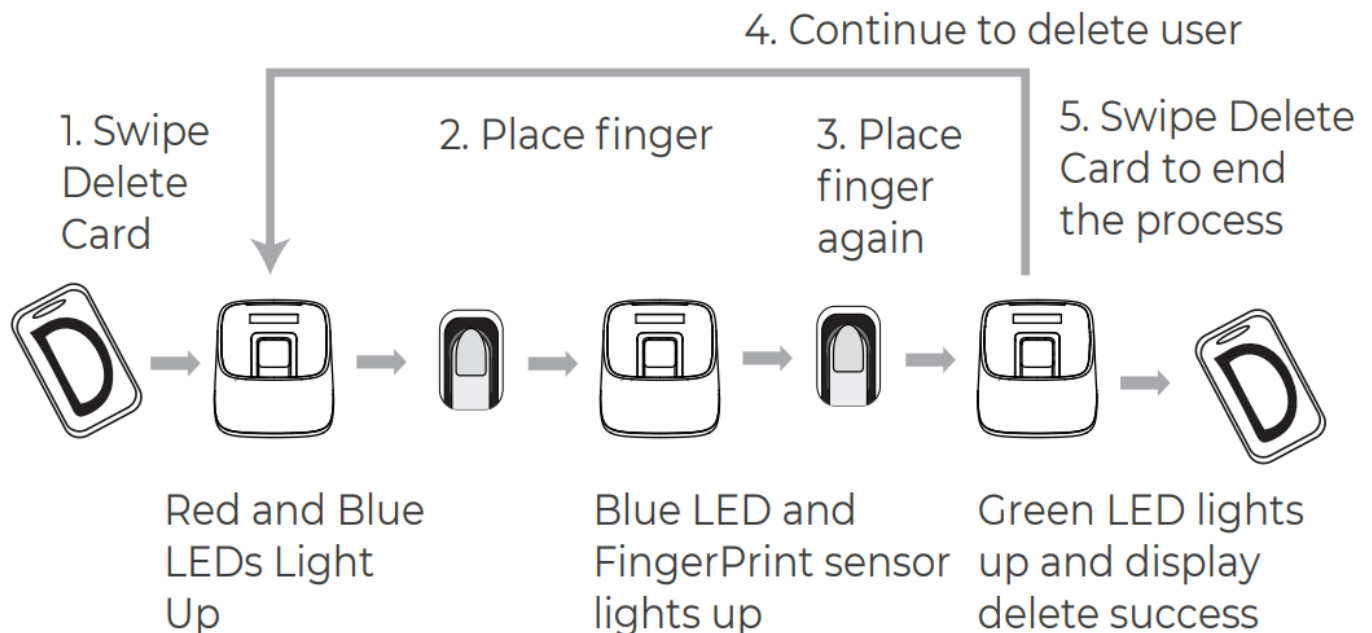
### Notice:

During the device is in the register mode without any operation for 3 sec, the M-bio will back to the normal mode.

### Delete User:

#### Delete Fingerprint or Card

After deleting one user, you can continue to delete another user or swipe Delete Card to exit delete mode.

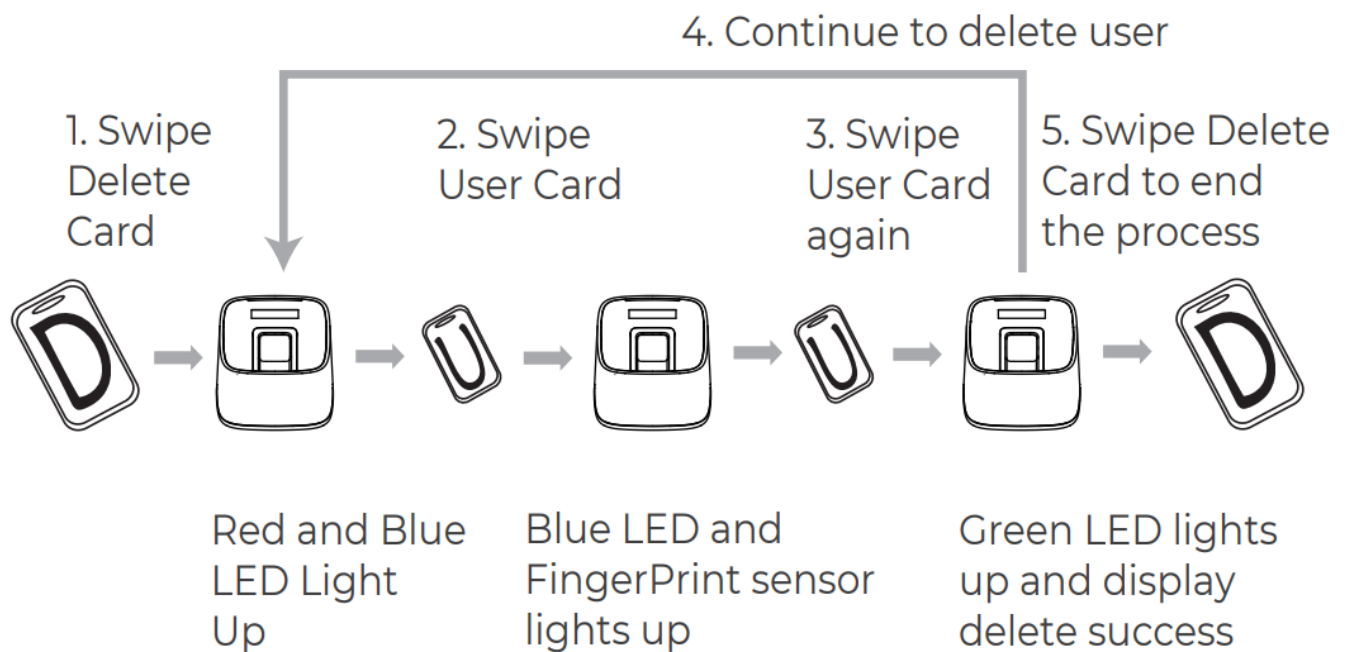


### Notice:

During the device is in the delete mode without any operation for 3 sec, the M-bio will back to the normal mode.

### Delete Card:

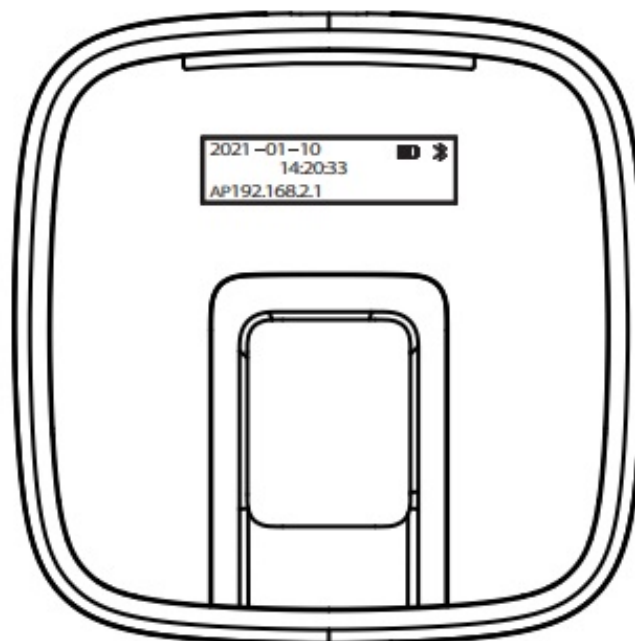
After deleting one user, you can continue to delete another user or swipe Delete Card to exit delete mode.



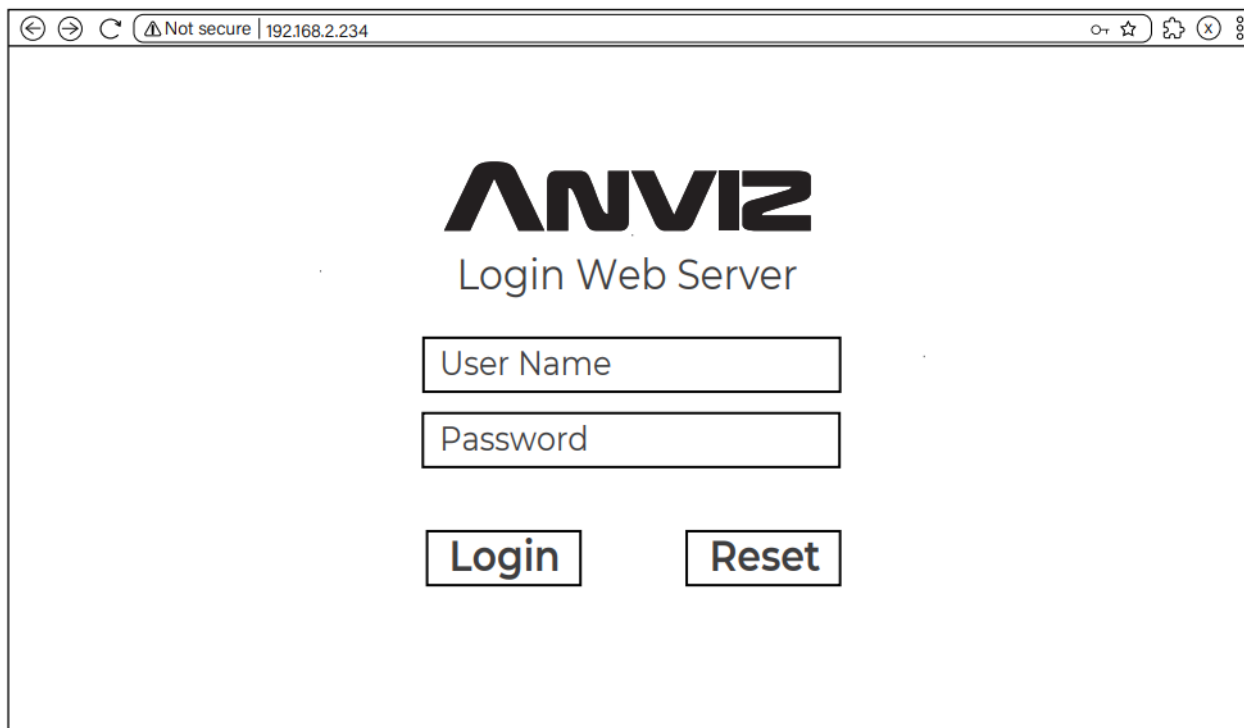
**Notice:**

When you swipe a card on M-Bio, a Red LED flashing with long beeps means the card does not exist in the device.

**Login WebServer**



Login to M-bio Webserver to manage the device.  
 M-bio is default with WIFI AP function.  
 Please connect M-Bio WIFI AP WIFI SSID: M-bio  
 Default Password: 123456789



ANVIZ

Login Web Server

User Name

Password

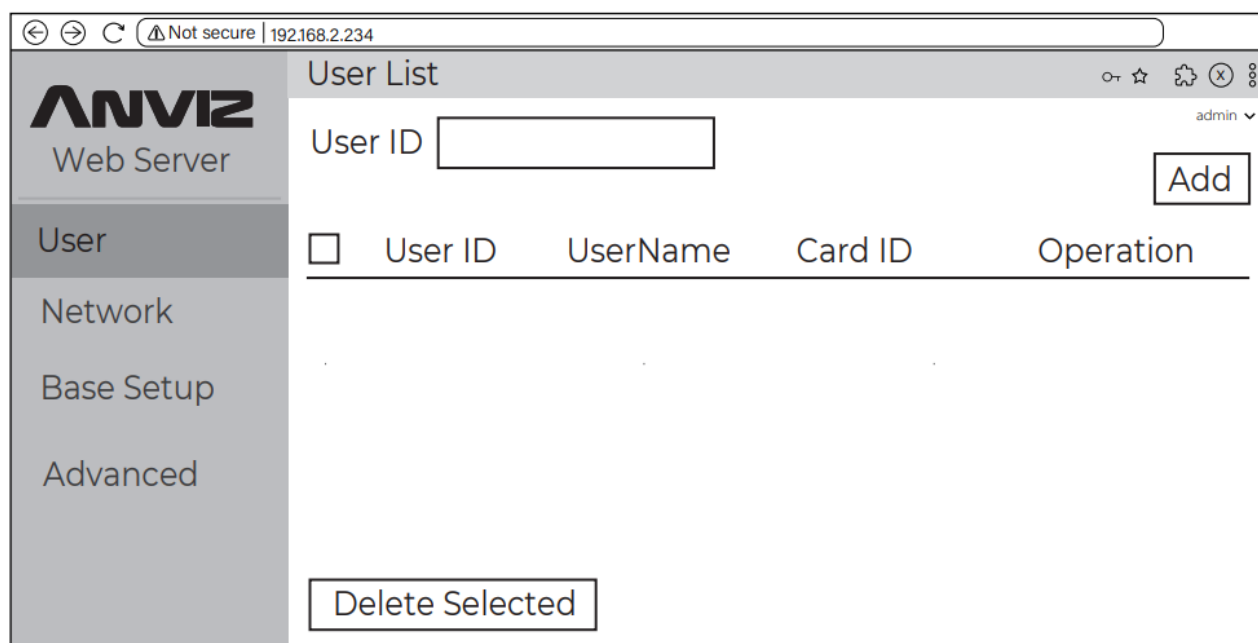
Login Reset

Please input the default address (192.168.2.234) in the browser to log in to Webserver.

**Account: admin**

**Default Password: 12345**

### User Register By WebServer



ANVIZ Web Server

User List

User ID

Add

☐ User ID UserName Card ID Operation

Delete Selected

Click the "Add" Button at the top right of the web to register the User.



ANVIZ Web Server

Edit

admin

**Add User**

\* User ID: 8524 Admin: 0-User

User Name: Felix

Password: \*\*\*\*\*

Card Num: Please Enter

Identify Mode: System default

Select FP: right\_thumb

Save

Fill in the employee's information and click "Fingerprint Enroll" to enroll the user's finger on the M-Bio device.



#### Call

+1-855-ANVIZ4U | +1-855-268-4948  
MON-FRI 5 AM-5 PM Pacific



#### Email

[support@anviz.com](mailto:support@anviz.com)  
24 Hours Answer



#### Text

+1-408-837-7536  
MON-FRI 5 AM-5 PM Pacific



#### Community

Join [community.anviz.com](https://community.anviz.com)  
if you have any questions or suggestions to share

#### Scan and download software

CrossChex Mobile App




<https://www.anviz.com/app/CrossChexMobile>

## CrossChex Standard

 Google Drive	 Anviz Drive
<a href="https://bit.ly/2Vn0wh6">https://bit.ly/2Vn0wh6</a>	<a href="https://bit.ly/2J9qA95">https://bit.ly/2J9qA95</a>

## Documents / Resources

	<a href="#">ANVIZ M-Bio Portable Bluetooth Enabled Fingerprint &amp; RFID Device</a> [pdf] User Guide M-Bio, Portable Bluetooth Enabled Fingerprint RFID Device, Enabled Fingerprint RFID Device, Fingerprint RFID Device, M-Bio, RFID Device
---	--

## References

-  [Anviz Community - Secure Workplace, Simplify Management](#)
-  [Anviz Global | Powering a Smarter World](#)