



ANVIZ M-Bio Desktop and Wireless Fingerprint and Card Terminal User Guide

[Home](#) » [ANVIZ](#) » ANVIZ M-Bio Desktop and Wireless Fingerprint and Card Terminal User Guide 



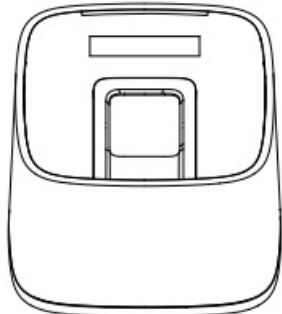

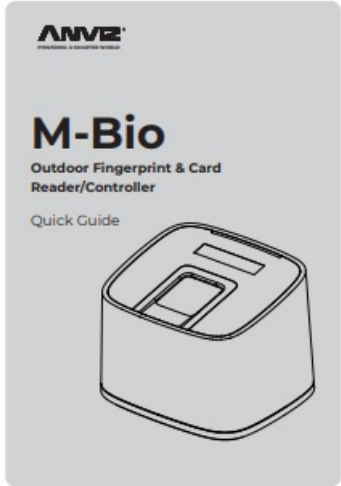

Desktop and Wireless Fingerprint
and Card Terminal
M-Bio
Quick Guide



Contents

- [1 Package List](#)
- [2 Illustration for Placing Finger](#)
- [3 Appearance](#)
- [4 Operation Guide](#)
- [5 Login WebServer](#)
- [6 Documents / Resources](#)
 - [6.1 References](#)
- [7 Related Posts](#)

Package List

	<p>Device</p>
	<p>USB Cable</p>
	<p>Quick Guide</p>
 <p>X4</p>	<p>RFID Card</p>

Notification:

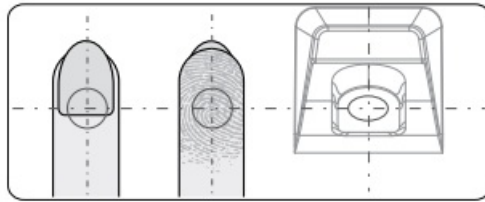
1. Please check if the package contains all the items listed above. Contact the distributor if there is any problem.
2. Please keep the product away from the magnetic field, and avoid causing any damage to the device.
3. Please use the original power supply or refer to the instruction to get the right power supply.
4. Please strictly follow the instructions to install the product. Any damage to it caused by incorrect operation and

wiring are not under warranty.

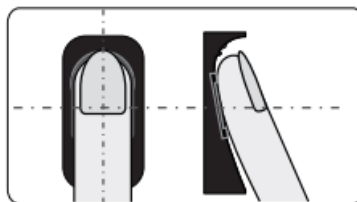
Illustration for Placing Finger

- **Correct Method**

(Straighten your finger and then place it on the sensor Ensure the finger is flat and covers the entire sensor)



Always place finger in the center of the sensor.

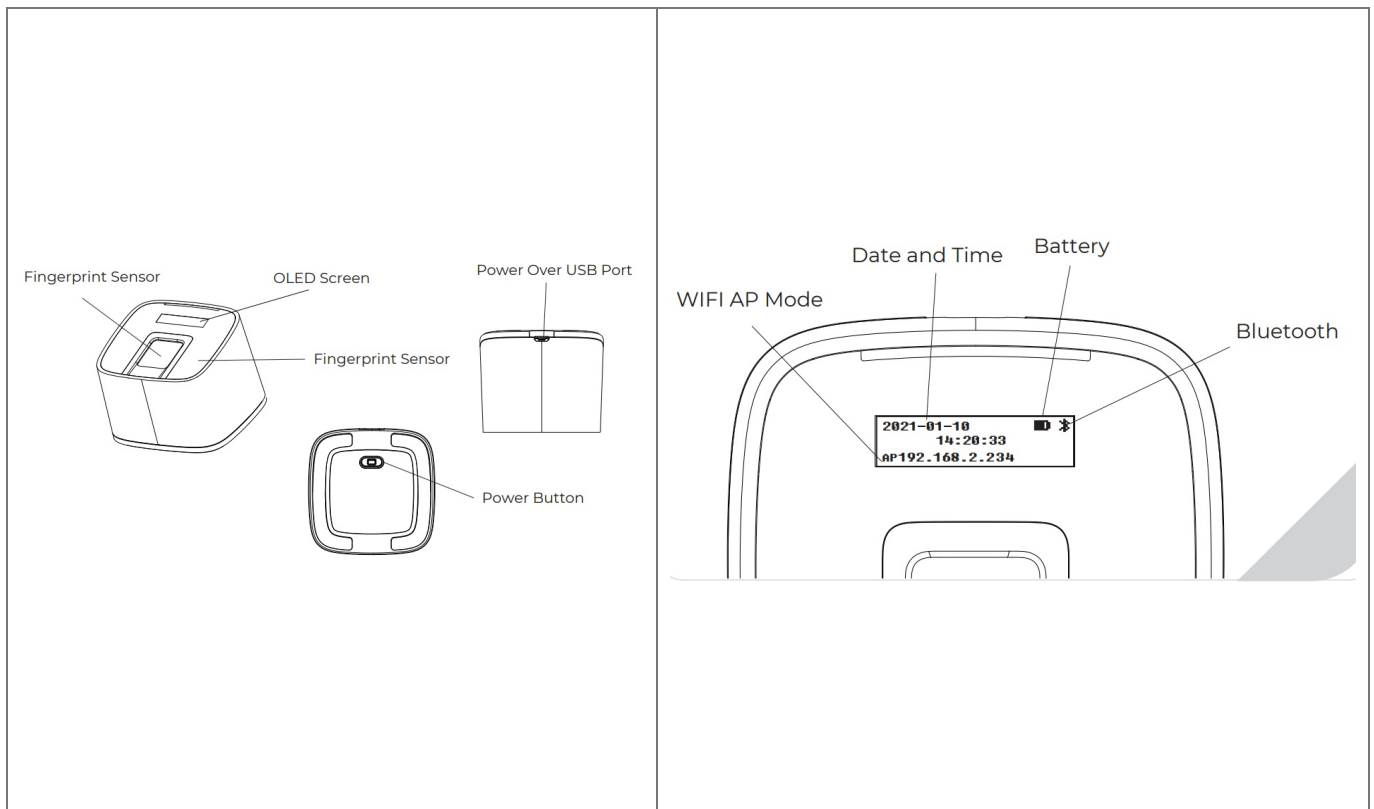


Try to place your finger covers the entire sensor.

- **Incorrect Method**

the sensor backlight turns off.	DO NOT place finger away from the center of the sensor.	DO NOT place finger at an angle.
DO NOT take off finger during the finger print verification process.	DO NOT just use your fingertip.	DO NOT slide your finger during the fingerprint verification process.

Appearance



Operation Guide

• IMPORTANT:

M-Bio is suitable for USB 5V power supply only. Power on the device still the device screen display as below:

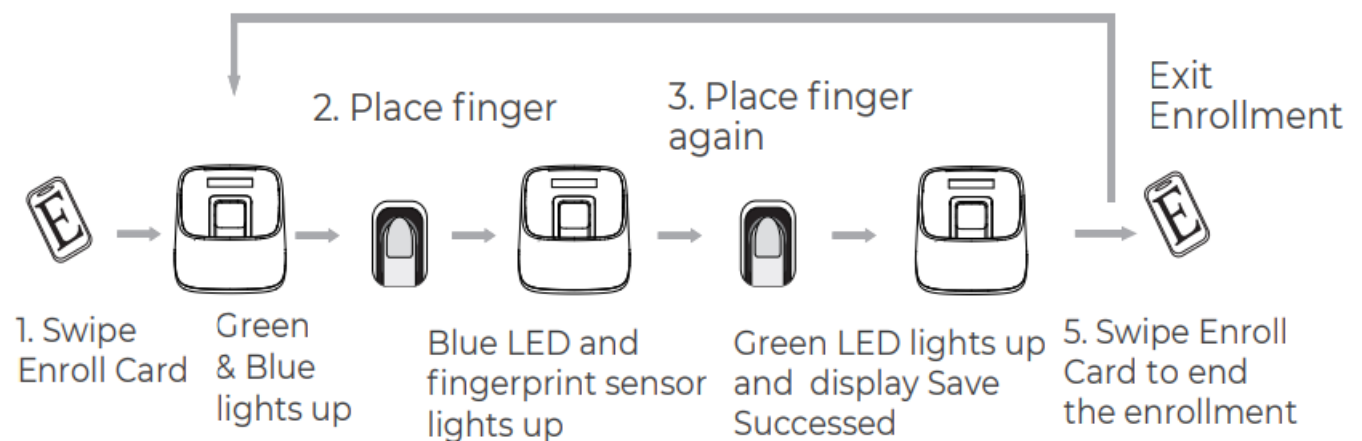
• Register User:

Add One Fingerprint per User Only:

Note:

1. After finish enrolling the current user, the device will continue to register another user.
2. After finish enrollment, please swipe enroll card to exit enroll status.

4. Continue to register another user



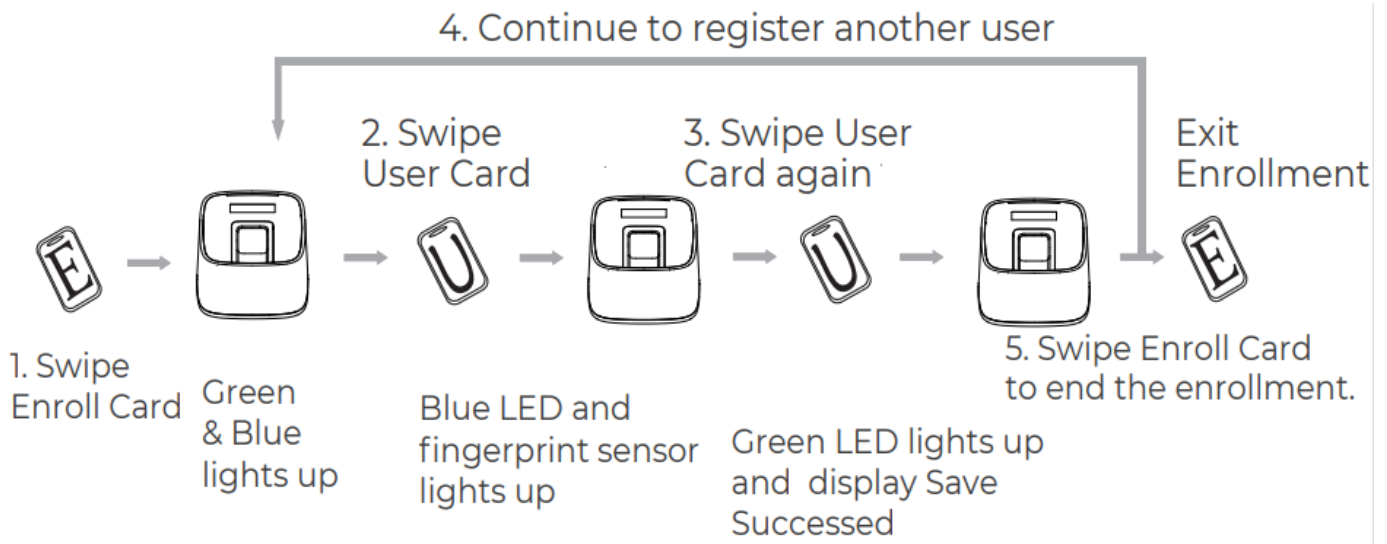
Notice:

During the device in the register mode without any operation for 3 sec, the M-bio will back to the normal mode.

- Add Card Only:

Note:

1. After finish enrolling current user,
2. After finish enrollment, please swipe enroll card to exit enroll status.

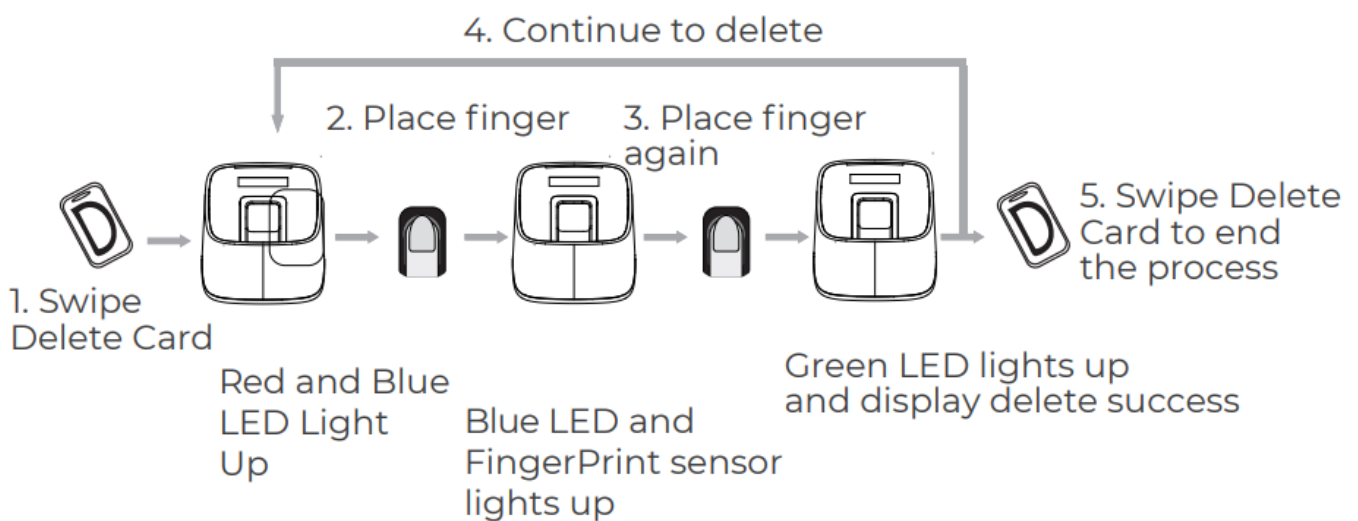


Notice:

During the device in the register mode without any operation for 3 sec the M-bio will back to the normal mode.

- **Delete User:**
- Delete Fingerprint or Card

After delete one user, you can continue to delete another user or swipe Delete Card to exit delete mode.

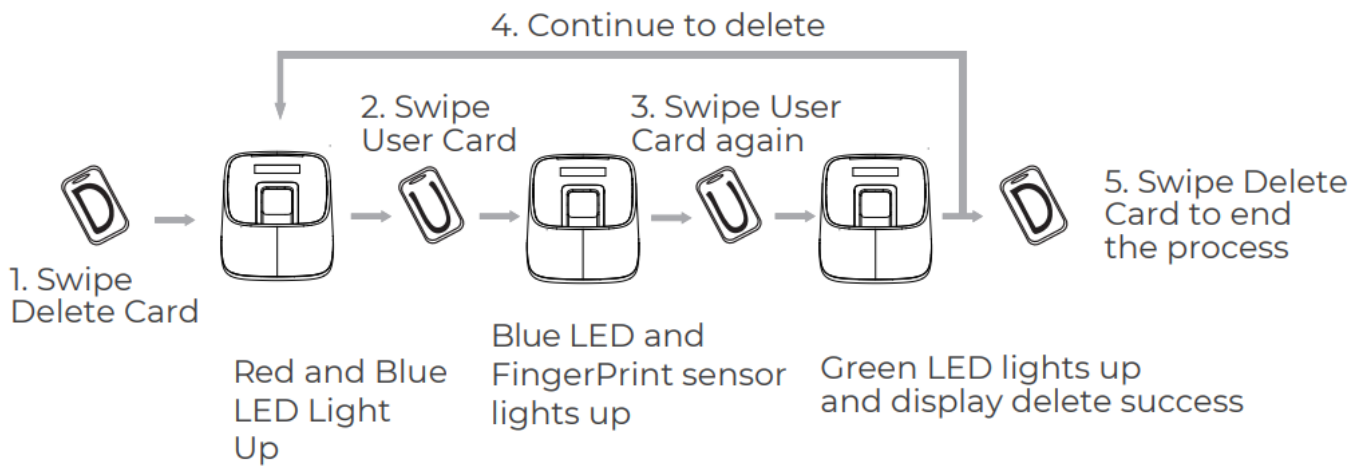


Notice:

During the device in the delete mode without any operation for 3 sec the M-bio will back to the normal mode.

- Delete Card:

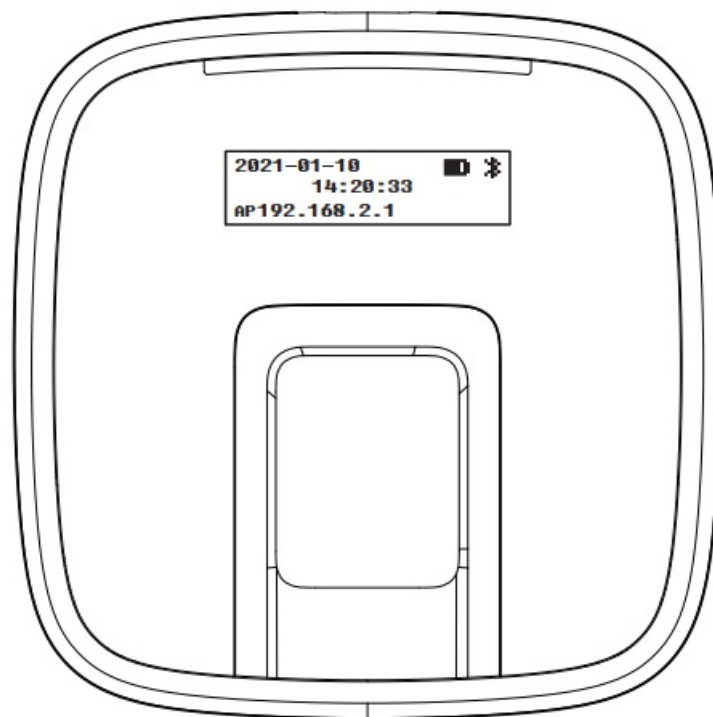
After delete one user, you can continue to delete another user or swipe Delete Card to exit delete mode.



Notice:

When you swipe card on M5 Pro, Red LED flashing with long beeps means the card does not exist in the device.

Login WebServer



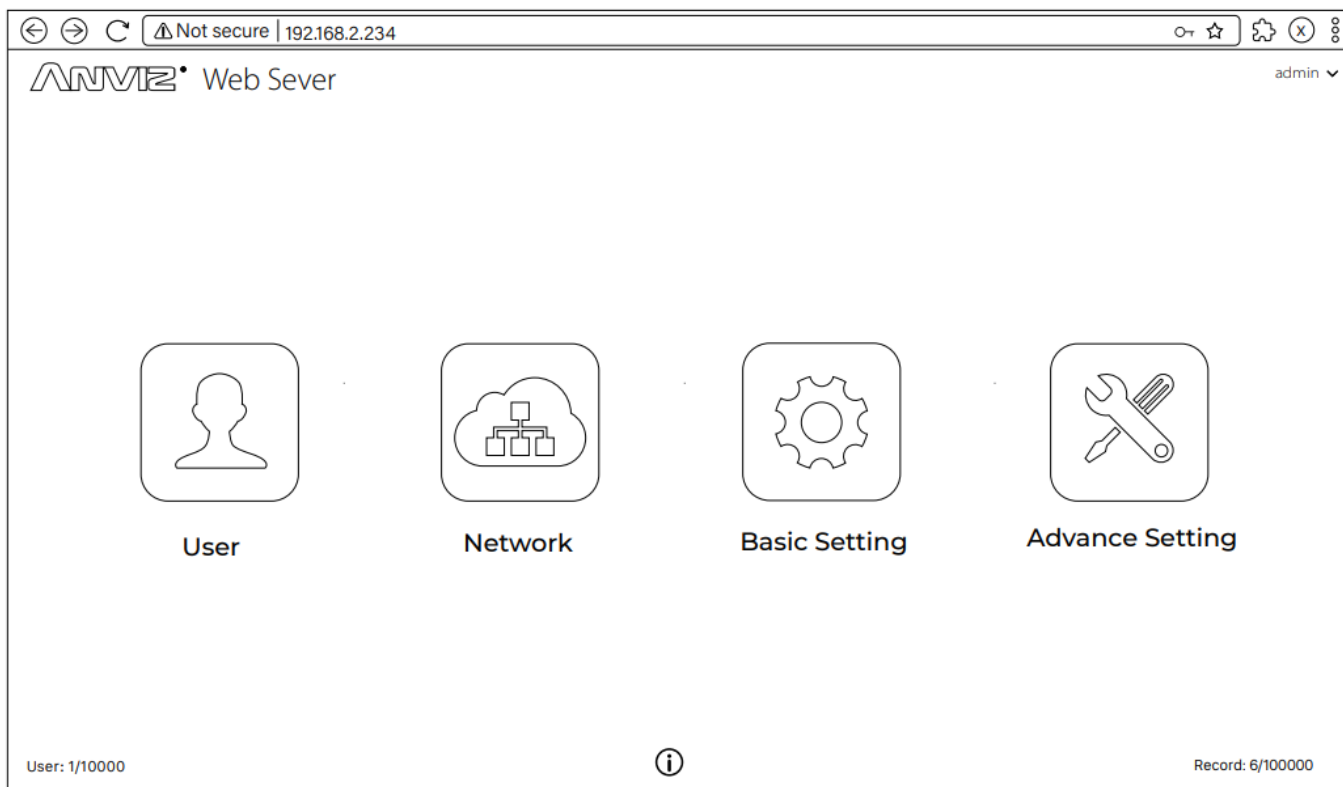
Login to M-bio Webserver to manage the device.

M-bio is default with WIFI AP function.

Please connect M-Bio WIFI AP

WIFI SSID: M-bio

Default Password: 123456789



The Webserver Login **Account: admin Password: 12345**

Anviz brand and product are trademarked and protected under the law of the United States. Unauthorized use is prohibited.

For more information, please visit www.anviz.com , or send email to sales@anviz.com for more help.

© 2021 Anviz Global Inc. All Rights Reserved.

202101



In order to protect the environment, Anviz has decided to go “CD Free” campaign on June 1st, 2019. We will provide a QR code for you to download the electronic documents to make sure that you understand how to install and use Anviz devices.



 <div data-bbox="185 526 429 600">  Download on the App Store </div> <div data-bbox="448 526 523 600">  </div> <div data-bbox="542 526 786 600">  GET IT ON Google Play </div> <div data-bbox="169 631 799 696"> <h1>CrossChex Mobile App</h1> </div>		
https://www.anviz.com/app/CrossChexMobile	https://bit.ly/2Vn0wh6	https://bit.ly/2J9qA95


Anviz brand and product are trademarked and protected under the law of the United States. Unauthorized use is prohibited.

For more information, please visit www.anviz.com , or send email to sales@anviz.com for more help.




© 2021 Anviz Global Inc. All Rights Reserved.

202101

Documents / Resources

	<p>ANVIZ M-Bio Desktop and Wireless Fingerprint and Card Terminal [pdf] User Guide</p> <p>M-Bio, Desktop and Wireless Fingerprint and Card Terminal</p>
---	---

References

-  [Anviz Global | Powering a Smarter World](#)
-  bit.ly/2J9qA95
-  [SoftwareUpdata - Google Drive](#)