



# Antelope PURE 2 Mastering AD/DA Converter and Clock User Manual

[Home](#) » [Antelope](#) » Antelope PURE 2 Mastering AD/DA Converter and Clock User Manual

## Antelope PURE 2 Mastering AD/DA Converter and Clock User Manual



### Contents [ [hide](#) ]

- [1 BEFORE YOU BEGIN](#)
- [2 PRODUCT ACTIVATION](#)
- [3 ACTIVATE YOUR PRODUCT WARRANTY](#)
- [4 FRONT PANEL EXPLAINED](#)
- [5 REAR PANEL EXPLAINED](#)
- [6 CONTROL PANEL](#)
- [7 ADVANCED NOTES](#)
- [8 SAFETY NOTES](#)
- [9 CUSTOMER SUPPORT INFORMATION](#)
- [10 MY ANTELOPE AUDIO PRODUCT ISN'T WORKING](#)
- [11 LIMITED WARRANTY POLICY](#)
- [12 TECHNICAL SPECIFICATIONS](#)
- [13 Documents / Resources](#)
  - [13.1 References](#)
- [14 Related Posts](#)

## BEFORE YOU BEGIN



Congratulations on your purchase! Pure2 is a mastering-grade 24/192 kHz AD/DA 2- channel converter and master clock with a relay-controlled volume attenuator. It features Antelope Audio's world-renowned Acoustically Focused Clocking (AFC) technology, and also utilizes pristine analog circuitry for unsurpassed digital clarity and analog realism. The unit is driven by a proprietary multi-stage linear power supply for optimal performance.

The relay-based stepped attenuator allows for exceptional accuracy when monitoring through speakers, with perfect L/R balance even at lower volume levels. A superb headphone amp features its own high-quality DA Conversion.

An intuitive software control panel for MacOS or Windows provides users the ability to manage all facets of the device operation. Pure2 is also configurable via the front panel with user-definable presets.

Several Word Clock outputs ensure Pure2 can be the master clock for an entire studio. For those seeking the highest level of performance, the unit can also be locked to Antelope's legendary 10M Atomic Clock.

A flexible set of connectivity options like S/PDIF, TOSLINK, AES, and USB provide abundant compatibility with other professional equipment.

Should you ever find yourself struggling, do not hesitate to contact our Customer Support team over phone, live chat and our ticket system. You can also visit Antelope Audio on YouTube and explore our video tutorials or join the Antelope Audio Users Facebook group and ask for advice. The Knowledge Base is also a good source of information.

Enjoy working with Pure2!

Best wishes,

**Team Antelope**

## **MANDATORY ONLINE ACTIVATION**

Please note that the mandatory device activation procedure requires an active Internet connection on your computer. Activating an Antelope device offline is not possible.

## PRODUCT ACTIVATION

### Step 1: Getting Started

Connect the Pure2 to a power outlet using an AC power cable. Plug in the device to your computer using a USB cable.

### Step 2: Install the Pure2 Launcher/Control Panel (macOS & Win)

Download and install the Pure2 Launcher/Control Panel application for Windows or macOS from [here](#).

Open and install the Launcher/Control Panel by following the steps in the installation wizard.



### Step 3: Activate your Pure2

Once the installation is completed, start the application. You will be prompted to create an Antelope ID directly from the application. Fill out the necessary information and click Continue. If you already have an active Antelope ID, click on Use existing Antelope ID.

Bear in mind, that your Antelope ID is different and has no relation to your user profile on [antelopeaudio.com](https://antelopeaudio.com).

tenmx

### Create Antelope ID

**Let's activate your device**

First time users (i.e. this is the first Antelope device you're activating online), please fill-out the form below to create your personal Antelope ID and click **Continue**. You will **receive an email** with the link to verify your account in order to complete your device activation.

If you already have an existing Antelope ID account, you may click the **Use existing Antelope ID** button to sign in.

Username:

Email:

Password:

Retype password:

Newsletter: ☒ Contains special offers, software updates, tips, etc.

[Go Back](#) [Use existing Antelope ID](#) [Continue](#)

Sign in using your credentials. If you have just created your Antelope ID, do not forget to activate it using the link in the e-mail you have just received.

tenmx

### Sign in with your Antelope ID

**Sign in with your existing Antelope ID.**

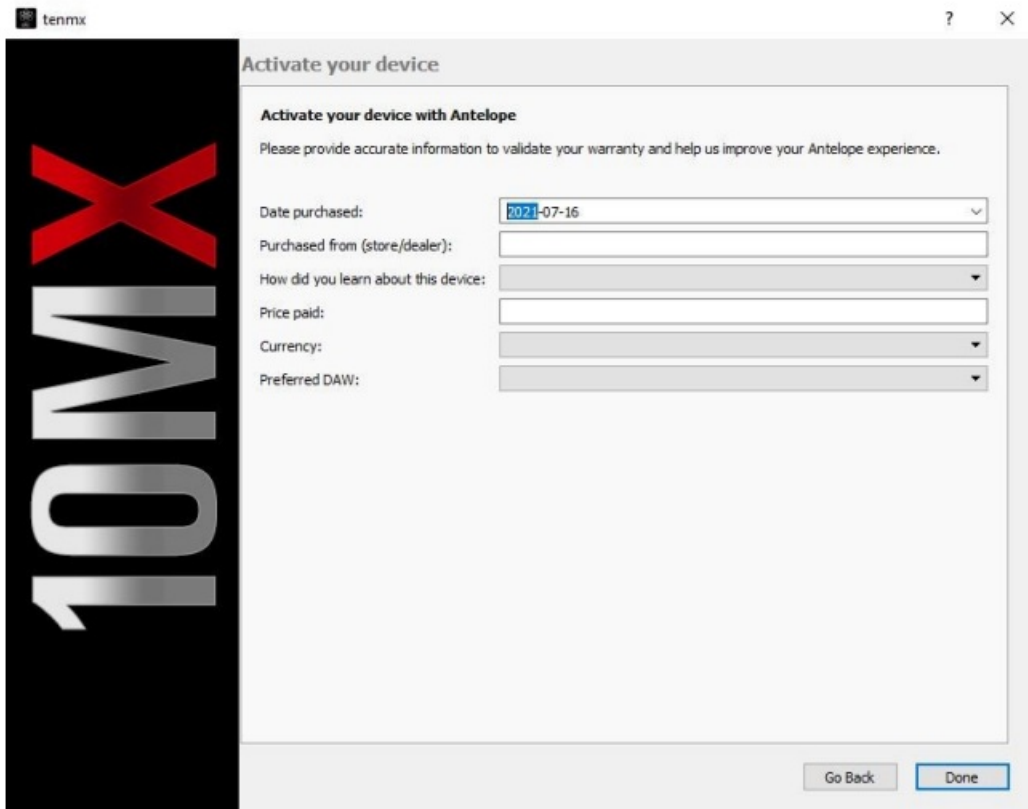
If you don't have an Antelope ID, please **Go Back** to the previous screen and create one first.

Username:

Password:

[Go Back](#) [Continue](#)

After successfully signing in your Antelope ID, you will be asked to fill in additional information concerning your recent purchase.

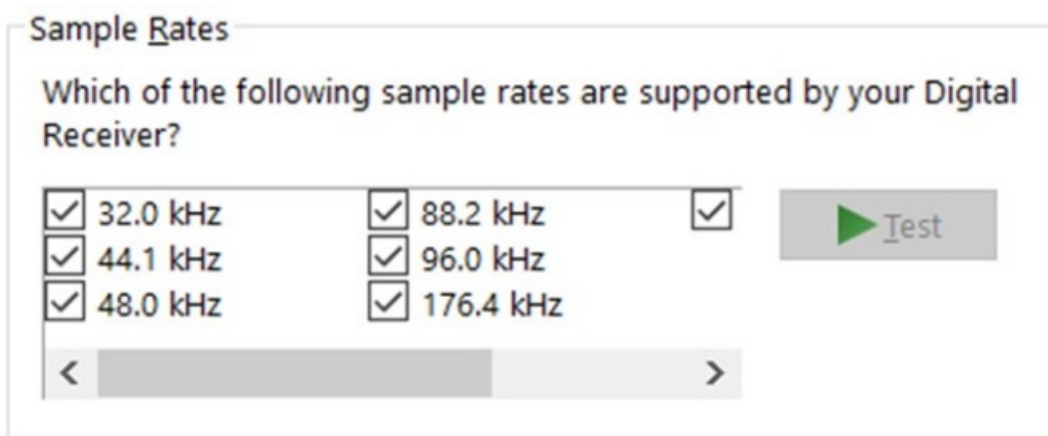


Once you have filled in the required information, click Done. You can now begin using your Pure2.

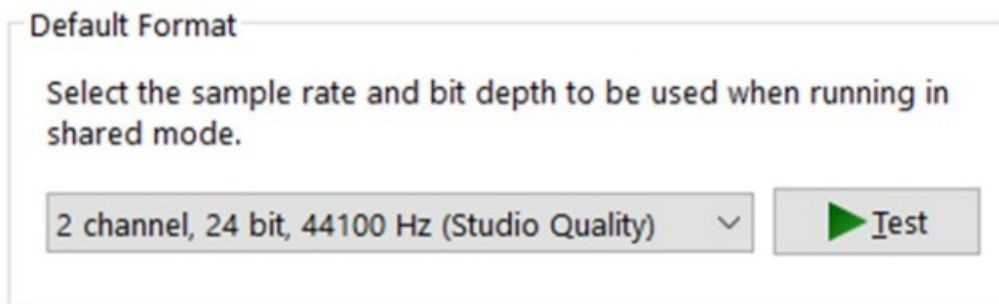
## Configuring for Windows 10

Windows 10 needs a few tweaks to get everything up and running.

1. Enter the 'Sounds' options window from the Control Panel or right-click the speaker icon in the system tray and choose 'Open Sound settings'.
2. Make sure Pure2 is chosen under 'Output' and 'Input'.  
Next, click 'Device Properties' under 'Output'. Then, click 'Additional Device Properties'.
3. Enter the 'Supported Formats' tab and place check marks next to all the available sample rates.



4. Enter the 'Enhancements' tab and make sure all enhancements are disabled.
5. Enter the 'Advanced' tab and choose any of the available "2 channel, 24-bit" modes.  
Click 'OK' to close the window.



6. Back in Sound settings, click 'Device Properties' under 'Input'. Then, click 'Additional Device Properties'. Enter the 'Enhancements' tab and disable all enhancements. Click 'OK' to close the window.

### Tips

- If you are experiencing interruptions or failure when using your DAW and trying to playback audio from your OS at the same time, make sure that the device sample rate matches the one of your DAW session.
- You can disable the device and enable it again from the 'Playback' tab to refresh the driver. This will be similar to disconnecting and re-connecting your device, which makes Windows reset the playback configuration of the applications you are using.
- In some cases, disabling the 'Exclusive mode' functionality from the 'Advanced' tab in 'Playback' Properties might help when running multiple playback applications at the same time.
- Disabling the 32kHz sample rate isn't mandatory, but it might help in general.

### Further Reading

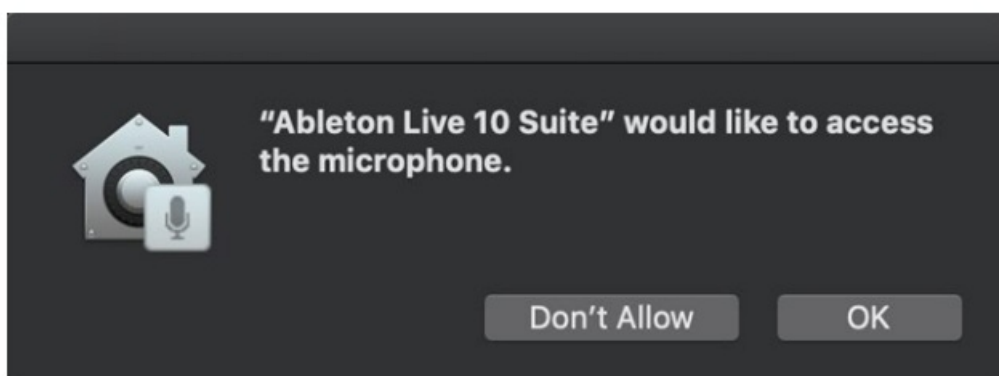
Antelope Audio Knowledge Base – Windows 10 Optimization

### Configuring for macOS (10.14 or later)

The new security settings introduced in macOS Mojave 10.14 (and later releases) may result in no input signal reaching your DAW, despite having everything set up correctly.

These steps apply when you are using the Pure2 in a DAW for the first time:

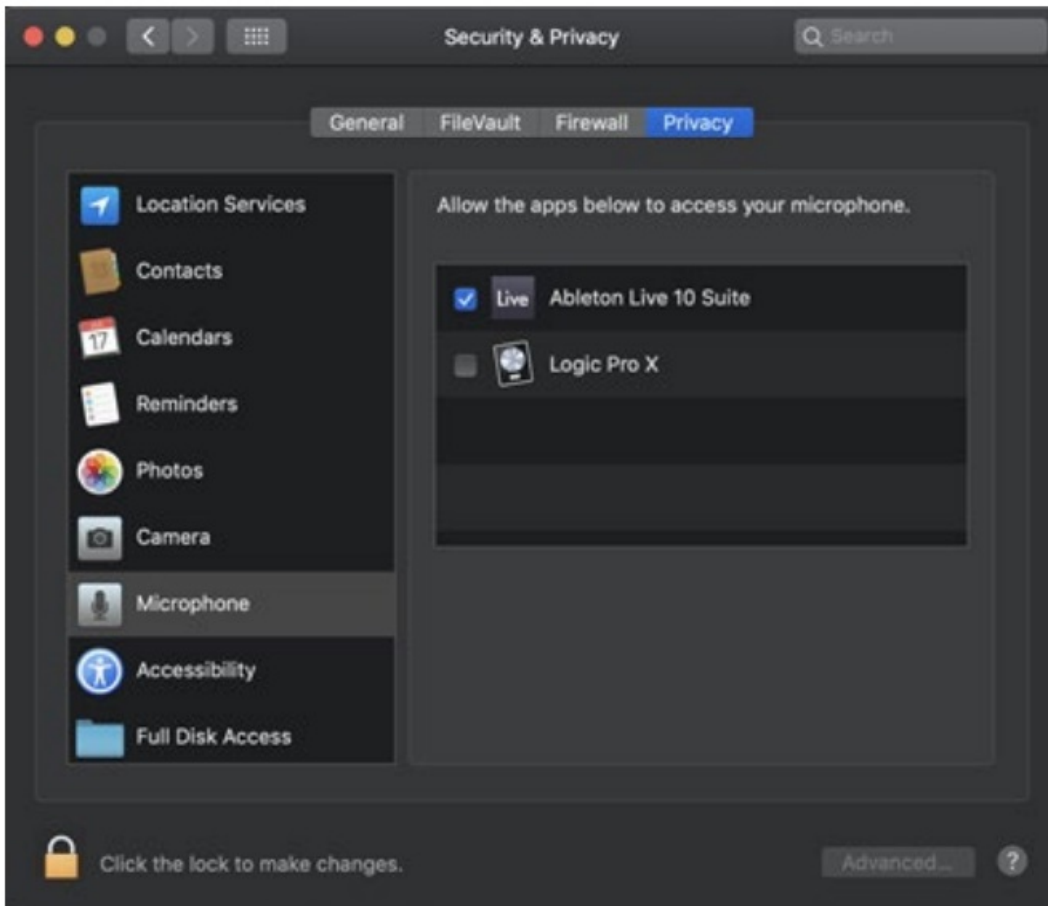
1. Launch your DAW and choose Pure2 as the input device. The following dialog box will appear (if using Ableton Live 10 Suite, for example):



2. Click 'OK' and your DAW should function normally.

However, if the events above did not occur for some reason, or you are using multiple DAWs, you must do a manual tweak for each in 'Security & Privacy' settings:

1. Click the 'Apple' symbol and choose 'System Preferences'. Head to the 'Security & Privacy' settings menu.
2. Click the 'Privacy' tab. In the column on the left, choose 'Microphone'. Make sure there's a checkmark next to any DAW you want to use:



### macOS 10.15 Catalina Workaround

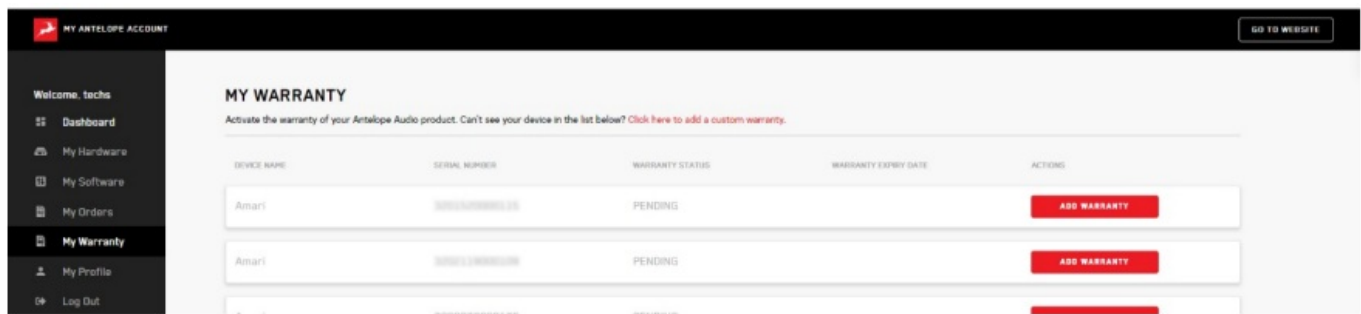
Please note that Pure2 is not officially compatible with macOS Catalina. However, there is a reliable workaround:

1. Download and install the latest Antelope Launcher – click to download. This step is necessary in order to install the latest Antelope Server.
2. Delete the Antelope Audio installation file from your macOS Downloads Folder. Then navigate to your macOS Applications folder and delete the Antelope Launcher.
3. Download and install the dedicated Pure2 launcher from the Pure2 'Download' section.
4. Restart your computer.
5. Start the Pure2 launcher.

### ACTIVATE YOUR PRODUCT WARRANTY

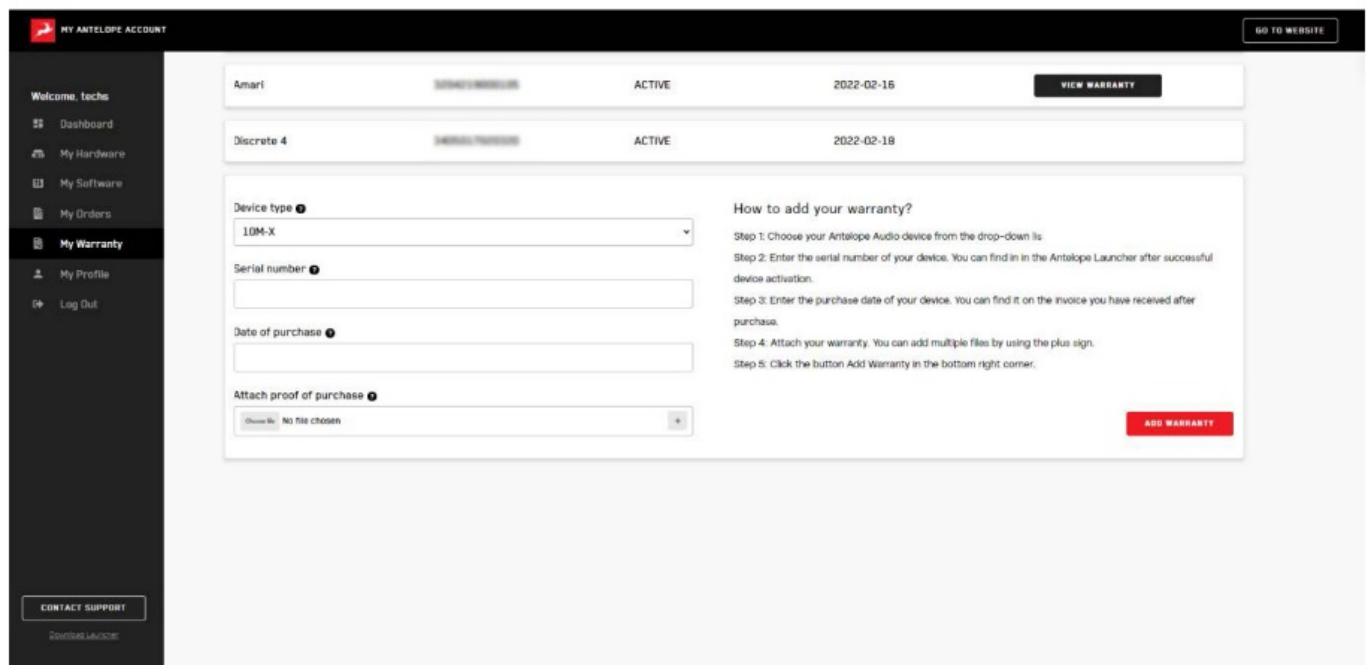
You will be required to activate your product warranty from the My Warranty tab in My Antelope Account. To activate your product, click on the text that sends you to the page where you can add a custom warranty.





On the following screen you will be asked to enter information about your new device and to attach your warranty. Select your device from the list under Device type and add a serial number. You can find it on the back side of your device's rack ears. After entering the serial number enter the date of purchase.

The last step is to attach your warranty. You can add multiple files (up to five) by using the plus sign. Acceptable formats are .pdf, .jpg, .png, .jpeg, .heif, and the size limit is 7 MB per file. Once you have completed the steps click Add Warranty.



After successfully completing the process, you can click on View Warranty to see if your file has been uploaded correctly.

## FRONT PANEL EXPLAINED



From left to right:

**Power button**



- Press to toggle standby/on state.
- Press and hold the power button to enter the Options menu with the following entries:

## **Device Info**

Displays device serial number, revision and firmware version.

## **Brightness**

Adjust the screen brightness.

## **Trim Control**

Lets you choose between Factory and Manual signal trim adjustments. Manual trim adjustments are made from the trim adjustment screws on the unit's rear panel.

## **Factory Reset**

Re-initializes the Pure2. Note that all presets and settings will be lost.

## **Screen Saver Time**

Adjust the screen saver duration. We recommend setting it to the shortest time you are comfortable with to prevent screen burn-in.

## **Screen Saver Style**

Choose the screensaver type.

## **10M Calibration**

Calibration for the Antelope Audio 10M Atomic Master Clock

Turn the rotary control to choose an entry. Press the rotary control to enter. Turn the rotary control to adjust values. Press any of the Power, Frequency Up or Frequency Down buttons to exit the menu.

## **Oven Clock light**

When lit, this indicates Pure2 is clocked by its internal oven-controlled crystal oscillator.

## **Lock light**

When lit, this indicates Pure2 is locked to an incoming digital signal via rear panel connectors including Word Clock, AES, S/PDIF, Toslink, and USB playback. The light will flash if there is no digital signal.

Note that when the device is in 'Oven' mode and you play a track from your computer over USB, the clock is slaved to it and the display shows: "Clock: USB". The Oven Clock light is lit and the Lock light remains off. Note that the Pure2 is still being clocked by its internal clock.

## Atomic Clock light

When lit, this indicates Pure2 is locked to an atomic signal that enters through the 10M input on the rear panel. When an active atomic signal is present, the Oven Clock light switches off and the Atomic Clock light switches on. This only occurs in Oven Mode. If a digital input is selected for sync source, the Lock light switches on if there is a valid signal present in the input, or blinks when the signal is missing.

## Frequency buttons

- These two buttons let you increase and decrease the sample rate, choosing from: 32kHz, 44.1kHz, 48kHz, 88.2kHz, 96kHz, 176.4kHz, 192kHz. The current frequency is indicated on the display.
- Press and hold the 'Frequency Up' button to see the routing table. Release the button to return to the main display view.

## Display

Multi-function display that shows Sample Rate on the left and volume meters for the inputs and outputs on the right. The sources are assignable and can be chosen from the software control panel.

**Note:** There might be a protective film over the display, which dims the illumination – feel free to remove it.

## Rotary control

This large stepped attenuator is used for navigating the Options menu and adjusting levels for the monitor and headphone outputs. Use the button to the right to switch between headphone and monitor volume control. The volume level is shown on the display while adjusting, with a range of -95dB to 0dB at control increments of 0.05dB. By pressing the Rotary control, you can mute and un-mute the currently chosen output.

## Output Select button

This lets you choose whether the Rotary control adjusts volume for the monitor outputs or the headphone outputs.

## Preset buttons

Three Preset buttons store and recall up to three device configurations. Save presets by pressing and holding any of the buttons for 2 seconds. This can also be done from the PC/Mac control panel by holding the Command key for Mac / Control key for Windows while clicking on 'PRESET 1-3'.



## Headphone Output

¼" TRS Stereo Headphone jack for connecting headphones with a wide range of impedances.

## REAR PANEL EXPLAINED



From left to right:

### **Mains Power Connection**

Note that Pure2 has a voltage selector and must be adjusted before powering up. The IEC connector supports ~110V @ 60Hz/ ~220V @ 50Hz. Choose the appropriate mains voltage for your country.

### **WC Input**

BNC connector used to accept Word Clock reference.

### **10M Input**

This BNC Input Connector allows Pure2 to receive timing reference from an Atomic Master Clock, such as the Antelope 10M/10MX to increase clocking accuracy. The atomic device becomes the primary timing reference to provide better sample accuracy, more detailed sound and even greater stability.

### **Digital Inputs**

- S/PDIF Inputs  
One Coaxial digital input on RCA connector using the S/PDIF connectivity standard.
- TOSLINK Inputs  
One Optical connector using the TOSLINK connectivity standard.
- AES/EBU Input  
One XLR connector-type input using the 110  $\Omega$  AES/EBU connectivity standard.

### **USB Hi-Speed**

Hi-Speed USB (up to 480Mbps) port. The Pure2 uses an USB connector Type B and operates up to 192kHz sample rate with custom Antelope drivers on both Windows and macOS.

### **De-Jittered Outputs**

- AES/EBU  
One 'jitter-free' XLR connector-type output for compatible equipment using the 110  $\Omega$  AES/EBU connectivity standard.
- S/PDIF Digital Output  
One coaxial 'jitter-free' S/PDIF Output on RCA connector.

- TOSLINK Digital Output

One optical 'jitter-free' TOSLINK Digital Output for use with compatible equipment.

## Word Clock Outputs

Eight Word Clock Outputs on BNC connectors.

## Analog Inputs

A combo stereo pair of balanced XLR / ¼" TRS Inputs for connecting analog sources to the Pure2.

## Analog Outputs

A stereo pair of balanced XLR Outputs for feeding your analog chain from the D/A of the Pure2.

## Monitor Outputs

A stereo pair (2x ¼ TRS) of balanced outputs to connect different pairs of monitors.

## Trim Adjustment Screws

Screws for manual signal trim adjustment for the monitor and analog outputs.

## CONTROL PANEL



The Pure2 PC/Mac Control Panel application lets you adjust each aspect of the unit's functionality, view volume metering, save and recall presets, and more. It's organized into the following sections:

## Function Strip



From left to right:

### **Standby/On Button**

Toggles the unit between Standby and On states.

### **Sample Rate Selector**

Drop-down menu to choose sample rate.

### **Clock Source Selector**

Drop-down menu to choose clock source. The following choices are available:

- 'OVEN' – Internal oven-controlled crystal oscillator.
- 'W.C.' – External word clock reference generator.
- 'Digital' – External digital input.
- 'USB' – Slave to computer playback. Note that the unit is still clocked by its internal oscillator in 'USB' mode.

### **Tab Selector**

Choose from 'Main', 'Digital', 'I/O', and 'Settings' views.

### **Downsize Button**

Reduces the Control Panel's screen size.

### **Help Button**

Displays Control Panel version, hardware version, device serial number, and firmware version. You can also launch the Firmware Update wizard to check for and initiate firmware updates.

### **Minimize Button**

Minimize the Control Panel

### **X Button**

Close the Control Panel.

### **VU Meters**



Virtual volume meters for the L/R analog and monitor outputs.

‘Main’ tab



Features Monitor and Headphone audio source selectors, volume rotary controls and buttons – ‘Mono’, ‘Dim’, ‘Mute’.

‘Digital’ tab



Contains the following drop-menus:

#### **DIG IN SELECT**

Choose the digital audio source – S/PDIF, Optical or AES

#### **USB REC SOURCE**

Choose the audio source for computer recording – Sine wave, A/D, USB Outputs 1 – 4, Digital Input.

#### **DIG OUT SOURCE**

Choose the audio source for the digital outputs – Sine wave, A/D, USB Outputs 1 – 4, Digital Input.

#### **'I/O' tab**





Contains an output signal trim selector with 'Factory' or 'Manual' settings. Manual adjustments are made from the adjustment screws on the unit's rear panel.

There's also a test tone generator with left and right channels for calibration and troubleshooting.

### 'Settings' tab



Contains ASIO Controls for Windows users (USB Streaming Mode, Buffer Size) and a screen brightness slider.

### Volume Meter



Volume meter with drop-down menu to choose audio source.

## Presets



Ctrl-click (Windows) / Command-click (Mac) to save the current settings as presets 1 – 3.

## ADVANCED NOTES

### Cabling

Proper Digital Audio cables should be used for SPDIF and AES/EBU connections. Avoid using standard analog audio cables for digital signals. Even though they may look the same, they are not designed for digital audio and performance will be compromised.

For digital connections, please use:

- AES/EBU – use 110  $\Omega$  shielded twisted-pair digital cables.
- S/PDIF – use 75  $\Omega$  coaxial (video) cables.
- WC uses 75  $\Omega$  BNC cables. Do not exceed 6 meters in length.

For analog connections, please use:

- Standard high quality cables with XLR connectors.
- Standard high quality cables with TRS connectors.

### Ground Loop Hum and Noise

The design of Pure2 minimizes the possibility of ground loop hum and noise. However, we recommend the use of short cables and balanced connections for all the audio signals of your system. All power cables of the system should be connected to a dedicated outlet box or power conditioner unit to avoid ground current noise affecting the audio signal path. It's also advisable to keep signal and power cables separate.

### 10M/MX Calibration

The Pure2 can be calibrated periodically in order to calibrate the accuracy of the internal clock by connecting it to the Antelope Audio 10M/MX Atomic Clock. This is not something that necessarily needs to be done very often, but if desired, please follow these instructions:

- Connect a 10M/MX unit to Pure2 via the dedicated 10M input.
- Power on the 10M and wait until it reaches operating temperature.
- With the Pure2 powered up, press and hold the Power button.
- Turn the Rotary control to navigate to the '10M Calibration' option.
- Confirm the selection by pressing the Rotary control.
- The Calibration screen appears showing the Oven Temperature and AC Lock status.

- Wait for the sign Locked. Error value will now be displayed at the bottom of the screen.
- Wait for the calibration to take place.
- When the Err. Number becomes stable, press the Rotary control (7) again to end the calibration.
- You will see “DONE” displayed on the LCD screen. You may exit the menu pressing the Volume Select button.

## SAFETY NOTES

To reduce the risk of electrical shocks, fire, and related hazards:

- Do not remove screws, cover, or cabinet. There are no user serviceable parts inside. Refer servicing to qualified service personnel.
- Do not expose this device to rain, moisture or spillover of liquid of any kind.
- Should any form of liquid or a foreign object enter the device, do not use it. Switch off the device and then unplug it from the power source. Do not operate the device again until the foreign object is removed, or the liquid has completely dried and its residues fully cleaned up.
- Do not handle the power cables with wet hands!
- Make sure the device is switched off when plugging/unplugging it to/from the power source.
- Avoid placing things on the cabinet or using the device in a narrow and poorly ventilated place which could affect its operation or the operation of other closely located components.
- If anything goes wrong, turn off the device first and then unplug the power. Do not attempt to repair the device yourself. Consult authorized service personnel or your dealer instead.
- Do not install near any heat sources such as radiators, stoves, or other apparatus (including amplifiers) that produce heat.
- Do not use harsh chemicals to clean your unit. Clean only with specialized cleaners for electronics equipment.
- Connect all your devices before powering your unit.
- This unit is connected via its power cord to the mains safety earth.
- Never operate the unit without this earth connection.
- DC power supply cable should be routed so that it is not likely to be walked on or squeezed by items placed upon or against it.
- To completely turn off the device, unplug the power cable first from the outlet and then from the rear panel of the unit.
- Both occasional and continued exposure to high sound pressure levels can cause permanent ear damage via headphones and monitors.
- Your unit should always be un-racked when traveling or in a flight case.

The device is designed to operate in a temperate environment, with a correct Operating Temperature of 0-50° C, 32-122° F.

## CUSTOMER SUPPORT INFORMATION

Antelope Audio Customer Support can be reached by the following means:

### Online

Visit [support.antelopeaudio.com](https://support.antelopeaudio.com)

## Phone

We are there for you around the clock, 21 hours/day, Monday to Friday.

North America +1-916-238-1643 01:00 a.m. – 10:00 p.m. (EST)

International +44 19 2593 3423 06:00 a.m. – 03:00 a.m. (GMT)

Pour le Support francophone: +44 20 3389 8108 09:00 a.m. – 17:30 p.m. (GMT+1)

## Live Chat

Live Chat is available during the following hours Monday to Friday International 06:00 a.m. – 06:00 p.m. (GMT)

**Note:** If you're trying to reach us outside working hours, we advise you to file a ticket in our customer support system or leave a voice message.

## Additional Resources

- The Antelope Audio YouTube channel is home to various tutorial videos and endorser content which you may find helpful and inspiring.
- The Antelope Audio Users Facebook group lets you interact with fellow users and some of our employees. Note, however, that it is not meant to be a support group. Please contact our customer support team for such inquiries.
- The Knowledge Base in our Customer Support section is an often-overlooked source of troubleshooting information, answers to commonly asked questions and Antelope know-how.

## MY ANTELOPE AUDIO PRODUCT ISN'T WORKING

### WHAT SHOULD I DO?

If you can't find a solution on your own, please get in touch with us so we check if you are having a hardware-related issue. If this is the case, we'll guide you through the repair process. If the product should be returned, a RMA number will be issued so we can begin the procedure.

### What's an RMA number?

Issuing a RMA (Return Merchandise Authorization) number is required for any factory service or repair procedure. Please, don't attempt to send us your device without receiving a RMA number first, as the device will be returned and not serviced.

### How do I get an RMA number?

The Antelope Audio Customer Support team is in charge of issuing RMA numbers. Visit [support.antelopeaudio.com](https://support.antelopeaudio.com) and get in touch.

After your RMA has been issued, you will receive an email with instructions on how to proceed.

### RMA shipping information

Alongside the product you are returning please, include a letter containing your full name, shipping address, RMA

number issued by our technical support team and a note with a short information about the technical issue.

Please use the original box if possible, because a worn out one will surely not protect your product sufficiently on its way to the Antelope Audio HQ. Additional cushioning materials in multiple layers between the unit and the box walls to prevent from shock, vibration and various tears and scratches.

Please remove any labels or old shipment markings it may have and ensure you add your shipping address inside the box in case the original shipment label becomes illegible during transportation.

The shipping costs are covered by the owner of the product. Antelope Audio will not cover any local customs charges.

We recommend using a courier service of your choice (e.g. DHL, UPS, FedEx). The package should be insured for its real value, marked as fragile and a tracking number should be provided. We do not recommend using standard mail delivery services.

Please, don't forget to add the RMA number, issued by the Antelope Audio technical support, on all shipping paperwork.

Antelope Audio cannot be held responsible for undelivered packages – lost or damaged on the way to the Antelope Audio HQ. For damage claims, please contact your shipping service provider of choice.

Antelope Audio cannot cover any repair costs for product damages due to poor packaging.

## **LIMITED WARRANTY POLICY**

This is a non-transferable voluntary Limited Product Warranty provided to end-customers who have purchased Antelope Audio-branded hardware product (hereinafter referred to as "Product") from an authorized Antelope Audio re-seller.

For customers covered by consumer protection laws or regulations in their country of purchase or, if different, their country of residence, the benefits conferred by Antelope Audio's Limited Warranty are in addition to, and not instead of, rights and remedies conveyed by such consumer protection laws and regulations and it does not exclude, limit or suspend buyer's rights arising from consumer law. Consumers have the right to choose whether to claim service under the Antelope Audio Limited Warranty or under their consumer law rights.

All claims made under the Antelope Audio Limited Warranty will be governed by the terms set out in this warranty document.

### **Warranty Coverage**

Antelope Audio warrants that the Product will be free from defects in material and workmanship for the period of 1 (one) year commencing on the date of purchase of Product by end-customer from authorized Antelope Audio's re seller.

Except where explicitly prohibited by applicable local law, this warranty is limited to the original purchaser and is non-transferable. This warranty provides you with specific legal rights, and you may have additional rights that vary under local laws.

In general, this warranty means your Antelope Audio hardware product will operate in accordance with published technical specifications, as specified by its data-sheet, and in the operating environment for which it was intended for the length of the warranty period.

This version of the warranty applies to products purchased on or after January 1, 2018. For prior versions of the Antelope Audio limited warranty, please contact customer service.

### **Limited Factory Refurbished (B-stock) Warranty**

Antelope Audio warrants products sold as "B-stock, Factory Refurbished or Open Box" to be free from defects in materials (unless otherwise stated in product description) and workmanship. Only products purchased from an authorized dealer or directly from Antelope Audio are covered by this Warranty.

The Limited Factory Refurbished (B-stock) Warranty is valid for the period of 6 (six) months, commencing on the date of purchase of Product, if local regulations do not require otherwise.

All warranty terms contained hereunder apply also to the B-stock Warranty, unless otherwise specified.

### **Remedies**

Antelope Audio's entire liability and your exclusive remedy for any Antelope Audio Product that is not operating in accordance with its published technical specifications is at Antelope Audio's discretion:

1. to repair the Product at Antelope Audio's expense using new or equivalent-to new refurbished parts in good working condition; or
2. to replace the Product at Antelope Audio's expense with a product with equivalent functionality formed from new and/or equivalent-to new refurbished parts in good working condition, or
3. to refund the price paid. Should Antelope Audio decide to refund the price paid, it may deduct from the paid Product's price any damages caused to the Product; where, within fourteen (14) days of the expiration of the warranty period, (i) Antelope Audio has received written notice of any nonconformity; (ii) after Antelope Audio's written authorization, customer has returned the nonconforming product to the designated place; and (iii) Antelope Audio has determined that the Product is nonconforming and that such non conformity is not the result of any of the exclusions designated below.

These warranty obligations are conditioned upon the hardware being returned to the original place of purchase, or another place as directed by Antelope Audio, with the original sales receipt attached. You will be required to pay shipping and handling charges for returning the product. You may be required to pay any other applicable tariffs, duties, taxes, or other fees with regard to returning the products.

Any repaired or replacement Product will be warranted for the remainder of the original warranty period.

### **Obsolete or Discontinued Products**

An obsolete or discontinued product will be repaired or replaced with the same product if available. If Antelope Audio is unable to replace your obsolete or discontinued product with the same product, Antelope Audio will replace the obsolete or discontinued product, in its sole discretion, with a product having similar function and capacity.

### **Exclusions**

This warranty does not cover problems or damage resulting from, but not limited to, any of the following: (i) Wear and tear associated with normal use; (ii) Any modification, abuse, accident, disassembly, misapplication, misuse, negligence, acts of God, accident; (iii) Unauthorized repair or attempted repair by anyone other than Antelope Audio or someone authorized by Antelope Audio to do warranty work; any unauthorized repairs will void this

warranty(iv)Any improper operation, maintenance or installation, including any use not in accordance with any supplied product instructions; (v)Connection to any improper voltage supply; (vi)Use of consumables or spare parts not supplied by Antelope Audio, except where such restriction is prohibited by applicable local law; (vii)Any other cause which does not relate to a Product defect in materials or workmanship.

The warranty does not apply to any Products which have been subject to misuse, neglect, accident or modification or which have been soldered or altered such that they are not capable of being tested under normal test conditions.

This warranty does not cover (i) any counterfeit products, i.e. Products that Antelope Audio, at its sole discretion, determines were not manufactured by Antelope Audio or any of its authorized manufacturing partners; (ii) Products purchased from a person or entity which is not an authorized dealer or re-seller of Antelope Audio; (iii)Product sold “as is” or “with all faults”, to the extent permitted by local law.

This warranty is not valid in case any manufacturer label(s), serial numbers, date stamp(s) or warranty sticker(s) has been altered or removed from the Product.

### **Limitation of Liability**

ANTELOPE AUDIO SHALL NOT BE LIABLE FOR ANY SPECIAL, INCIDENTAL, INDIRECT, OR CONSEQUENTIAL DAMAGES WHATSOEVER, INCLUDING BUT NOT LIMITED TO LOSS OF PROFITS, REVENUE, OR DATA (WHETHER DIRECT OR INDIRECT) OR COMMERCIAL LOSS FOR BREACH OF ANY EXPRESS OR IMPLIED WARRANTY ON YOUR PRODUCT EVEN IF Antelope Audio HAS BEEN ADVISED PREVIOUSLY OF THE POSSIBILITY OF SUCH DAMAGES. Some local laws do not allow the exclusion or limitation of special, indirect, incidental or consequential damages, so this limitation or exclusion may not apply in your jurisdiction.

ANTELOPE AUDIO WILL NOT ASSUME OR AUTHORIZE ANY OTHER PERSON TO ASSUME FOR IT ANY OTHER LIABILITY IN CONNECTION WITH ITS PRODUCTS.

### **Data Recovery**

In the event of data loss using Antelope Audio storage devices, Antelope Audio is not responsible for backing up or recovering any data that you may have lost.

### **No Other Warranties**

No Antelope Audio employee, dealer, re-seller, or other agent is authorized to make any modification, extension, or addition to this warranty.

### **How to Make a Warranty Claim**

Valid warranty claims should be processed through your point of purchase. Please also verify the return policy directly with the retailer where you purchased your product. Any warranty claims that cannot be reprocessed through your original point of purchase should be addressed directly to Antelope Audio. Our customer service contact information can be found on the web or in the documentation included with your Product.

### **Returning Your Product**

In the event that you need to return your Antelope Audio products for repair or replacement, Antelope Audio will provide you with a Return Merchandise Authorization Number (RMA#) as well as return instructions. Do not return your product without prior approval from Antelope Audio. Any product returned without a valid unique RMA# will be refused and returned to the sender at the sender's expense. To avoid problems at the time of receipt, clearly write your RMA# on the outside of the package and include a copy of your RMA confirmation-mail within the



package.

In certain situations, for in-warranty units, we may (entirely at our opinion) offer you a temporary replacement unit, provided that we have such on stock in your state. To request a temporary replacement unit, a valid credit card must be provided to secure the new replacement unit for shipping prior to Antelope Audio receiving the defective one.

### **Request a Return Material Authorization Number (RMA#)**

Please follow these steps to obtain an RMA number:

(I) For end user customers, submit a claim online at: [support.antelopeaudio.com](https://support.antelopeaudio.com). For business to business (B2B) / Direct customers of Antelope Audio please email us at [techsupport@antelopeaudio.com](mailto:techsupport@antelopeaudio.com)

(ii) A valid proof of purchase is required for RMA processing (i.e. receipt, invoice, etc).

Antelope Audio will provide you with the RMA number within 2 working days as of the claim submission date.

### **RMA Return Addresses**

We have multiple RMA receiving locations worldwide. Your RMA confirmation will specify the specific return address you must use when sending your RMA package. Any packages received at an unauthorized location may be refused and returned to the sender at the sender's expense.

### **Products Lost or Damaged During Transit**

The original packaging material should be used to pack the product for return; if the original packaging is not available, you should use such materials that provide the same or greater protection to the product. All packages that arrive with any external damage or appear inadequately packed will be refused and returned to the sender at the sender's expense. We are not responsible for damage incurred during shipping to our RMA receiving locations or for lost or stolen products.

### **Company information**

**Antelope Audio** is the trade name, under which the company Elektrosfera Ltd., registered under the legislation of the Republic of Bulgaria with UIN: 131052590, is doing business and is worldwide known. Elsewhere in this document where the trade name Antelope Audio is used shall refer to Elektrosfera Ltd., with address of management: Tsarigradsko Shose Blvd., 7th km, Building of BIC IZOT, floor 6, Mladost region, Sofia, Bulgaria.

If any term hereunder is held to be illegal or unenforceable, it shall be severed from this warranty and the legality or enforce ability of the remaining terms shall not be affected.

## **TECHNICAL SPECIFICATIONS**

### **Analog Inputs:**

1 x Combo Balanced Analog (XLR / ¼ TRS) factory calibrated to +22dBu

### **Digital Inputs:**

1 x AES/EBU on XLR (32kHz to 192kHz) @ 110 Ohms terminated

1 x S/PDIF on RCA (32kHz to 192kHz) @ 75 Ohms terminated

1 x TOSLINK on optical fiber: up to 96kHz

### **Analog Outputs:**

1 x Stereo pair of Balanced XLR Outputs from D/A Converter (Main Output) is factory calibrated to 22dBu and user adjustable from 8dBu to 26dBu  
1 x Stereo pair Balanced Outputs for monitors (2 x ¼ TRS)  
1 x Balanced ¼ TRS LFE Out  
1 x ¼ TRS Front Headphones 22dBu

**Digital Outputs:**

1 x AES/EBU on XLR (32kHz to 192kHz) @ 110 Ohms terminated  
1 x S/PDIF on RCA (32kHz to 192kHz) @ 75 Ohms terminated  
1 x TOSLINK on optical fiber: up to 96kHz

**USB:**

USB 2.0 Hi-Speed; Data stream up to 480Mbits/192kHz,  
4 channels I/O playback/record, Type B

**External Reference Clock:**

1 x 10M Atomic Clock Input @ 75 Ohms 1Vpp on BNC  
1 x Word Clock Input @ 75 Ohms 3Vpp on BNC 32 – 192kHz

**A/D Converter:**

Dynamic Range 122dB  
THD+N -105dB

**D/A Converters:**

Main DAC Dynamic Range 127dB  
THD+N -107dB  
Monitor DAC Dynamic Range 120dB  
THD+N -103dB  
Headphones DAC Dynamic Range 120dB  
THD+N -100dB

**Clocking System:**

4th Generation Acoustically Focused Clocking  
64-bit DDS  
Oven Controlled Crystal Oscillator

**Clocking Stability:**

<+/-0.02 PPM, oven controlled at 64.5 C/148.1 F

**Clock Aging:**

< 1 ppm per year

**Clock Calibration:**

<+/-0.001 ppm

**Atomic Clock Input:**

10MHz @ 1Vpp, BNC

**Sample Rates (kHz):**

32, 44.1, 48, 88.2, 96, 176.4, 192

**Operating Temperature:**

0-50 C, 32-122 F

**Weight:**

3 kg, 6.6 lb approx.

**Dimensions (Approx):**

483mm(W) x 44mm(H) x 220mm (D)

19"(W) x 1.75"(H) x 8.66"(D)

**Power Supply:**

~110VAC 60Hz/ ~220VAC 50Hz selectable

**Fuses:**

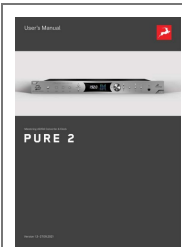
2 x 0.8A 250VAC 5mm x 20mm Type T (or Time delay)

**Pin layout:**

Pin 1 – Ground

Pin 2 – Hot

Pin 3 – Cold

**Documents / Resources**

[Antelope PURE 2 Mastering AD/DA Converter and Clock](#) [pdf] User Manual  
PURE 2 Mastering AD DA Converter and Clock, PURE 2, Mastering AD, Mastering DA,  
Converter and Clock

**References**

- [Antelope Audio | Interfaces | Modeling Mics | Plugins](#)
- [Support | Antelope Audio Customer Support](#)