



ANSSiI Twin Size String Mattress User Guide

[Home](#) » [ANSSiI](#) » ANSSiI Twin Size String Mattress User Guide 

Contents

- [1 ANSSiI Twin Size String Mattress](#)
- [2 CONTENTS](#)
- [3 CONTROLS](#)
- [4 MATTRESS AND CONTROLLER ASSEMBLY](#)
- [5 TIPS FOR USING THE CONTROLLER](#)
- [6 USAGE GUIDELINES / SAFETY GUIDELINES](#)
- [7 Documents / Resources](#)
 - [7.1 References](#)
- [8 Related Posts](#)

ANSSiI

ANSSiI Twin Size String Mattress



ANSSil STRING MATTRESS CONTROLLER GUIDE

Hello! Welcome to the wonderful, comfortable world of string. This is both a user guide for ANSSil's string mattress and a manual that will transform your life. Are you ready to start making a new tomorrow that's what you desire? We're so glad you're here. ANSSil

Specifications

- **Controller:** ANSSil
- **Controls:** + Button, – Button, Power Button, LED Indicator Light, Automatic Air Injection Indicator, Adapter Port, Air Release Valve, Connection Hose Port
- **Contents:** Connection hose, Controller, Adapter, User guide

Usage Guidelines

Mattress and Controller Assembly

Please take caution to avoid any debris from entering the string valve.

1. Remove the mattress and all other contents from the long box.
2. Place the ANSSil mattress wherever you will sleep, either on top of a mattress frame or on the floor.
3. Carefully unroll the mattress. Don't forget to remove the packaging!
4. Check the zipper at the bottom of the mattress. Open the zipper to find the string valve.
5. Twist the valve stopper to open (left) or close (right).
6. Ready to attach the connection hose to the string valve?
7. Align the direction of the head of the connection hose and firmly push the connection hose head inside and turn to the right to attach.
8. Position the connection hose in any position you desire and zip up the close the zipper.
9. Attach the adapter and plug it in. The controller and adapter must be connected first before plugging into a power source.
10. Plug the adapter into a power outlet and check that it is working.

Using the Controller

1. Make sure that the controller and mattress are connected properly.

2. Click the power button and make sure the controller powers up. The initial default number is 0.
3. To increase the ANSSil number, click the + button three times.
4. To decrease the ANSSil number, click the – button.
5. The LED indicator light indicates the current status of the mattress, such as ANSSil numbers, errors, etc. It automatically turns off without being operated for 20 seconds.
6. The automatic air injection indicator shows the ON/OFF status of the automatic air injection function into the string mattress.
7. The air release valve releases air from the mattress.

Tips for Using the Controller

Here are some tips for using the controller

- Hold down the + button for 5 seconds to turn on/off the automatic compensation function.
- The controller and mattress should be disconnected before disconnecting the connection hose.

FAQ

- **Q: What should I do if there are abnormalities with the controls or accessories?**

A: Please ensure there are no abnormalities with the controls or accessories. If you notice any issues, please contact our customer support for assistance.

- **Q: Can I use the mattress without the controller?**

A: No, the controller is necessary for proper functioning of the ANSSil string mattress. Please make sure the controller is connected and powered on before use.

- **Q: How do I disconnect the mattress and connection hose?**

A: Before disconnecting the connection hose, make sure to disconnect the controller and mattress first. Follow the assembly instructions in reverse order to disconnect the mattress and connection hose.

- **Q: How do I disconnect the controller and connection hose?**

A: To disconnect the controller and connection hose, simply remove the connection hose from the connection hose port on the controller.

- **Q: What are the display items on the controller?**

A: The LED indicator light on the controller displays the current status of the mattress, such as ANSSil numbers, errors, etc.

Hello!

Welcome to the wonderful, comfortable world of string.

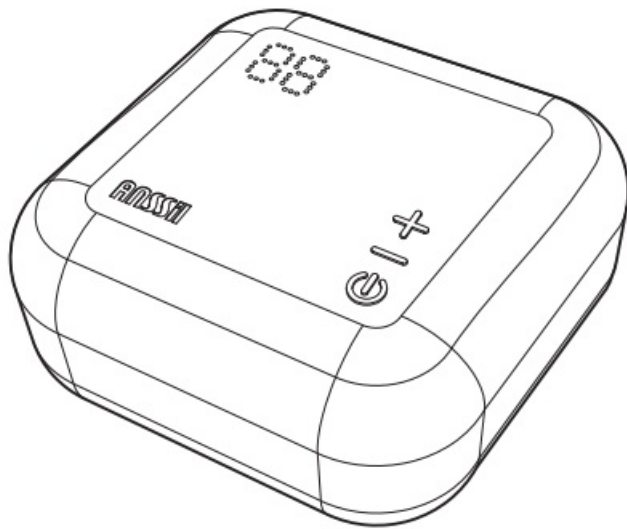
This is both a user guide for ANSSil's string mattress and a manual that will transform your life.

Are you ready to start making a new tomorrow that's what you desire?

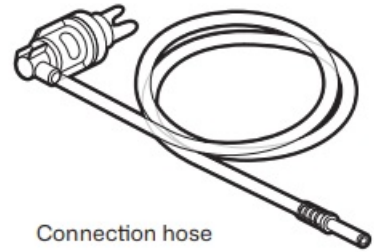
We're so glad you're here.

ANSSil

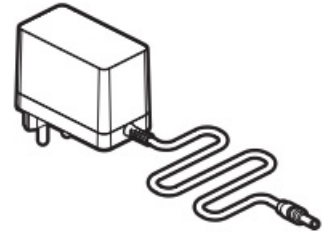
CONTENTS



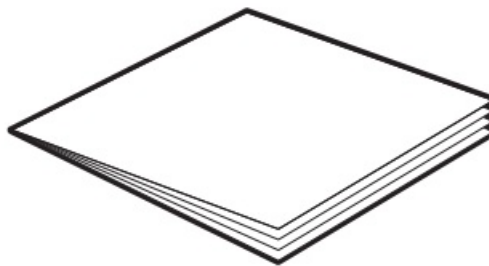
Controller



Connection hose

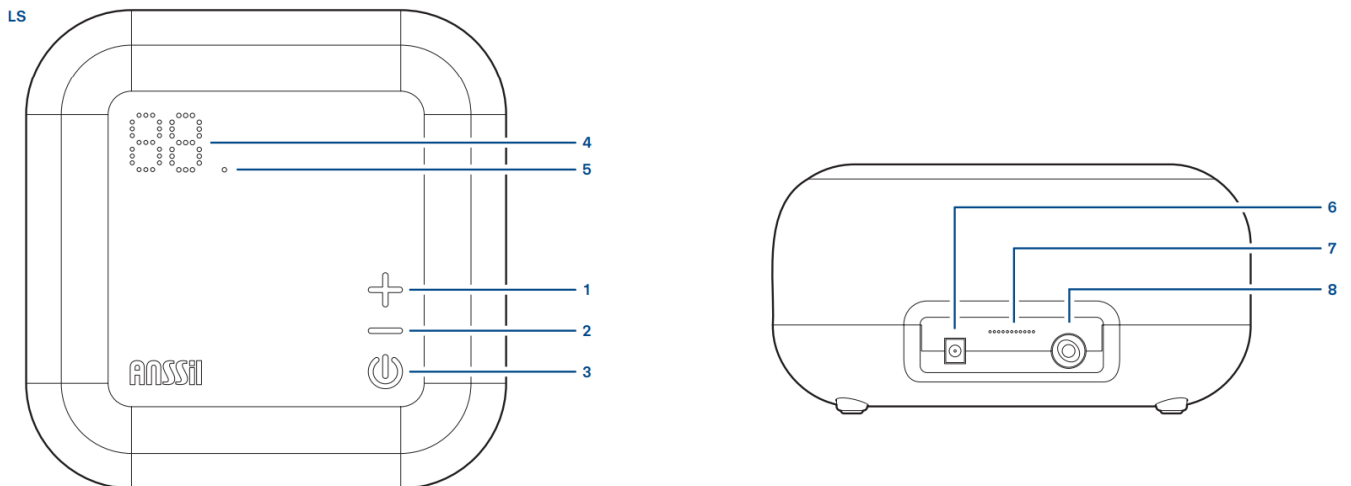


Adapter



User guide

CONTROLS



1. +BUTTON, AUTOMATIC COMPENSATION ON/OFF

- This is for injecting air into the mattress.
- Holding down the button for 5 seconds turns it on/off.

2. – BUTTON

Lets out air from the mattress

3. POWER BUTTON

Turns the controller on and off

4. LED INDICATOR LIGHT

To indicate the current status of the mattress, such as ANSSil numbers, errors and etc.

It automatically turns off without being operated for 20 seconds.

5. AUTOMATIC AIR INJECTION INDICATOR

ON/OFF light for automatic air injection function into the string mattress, when necessary.

6. ADAPTER PORT

Where the adapter cable connects to the controller

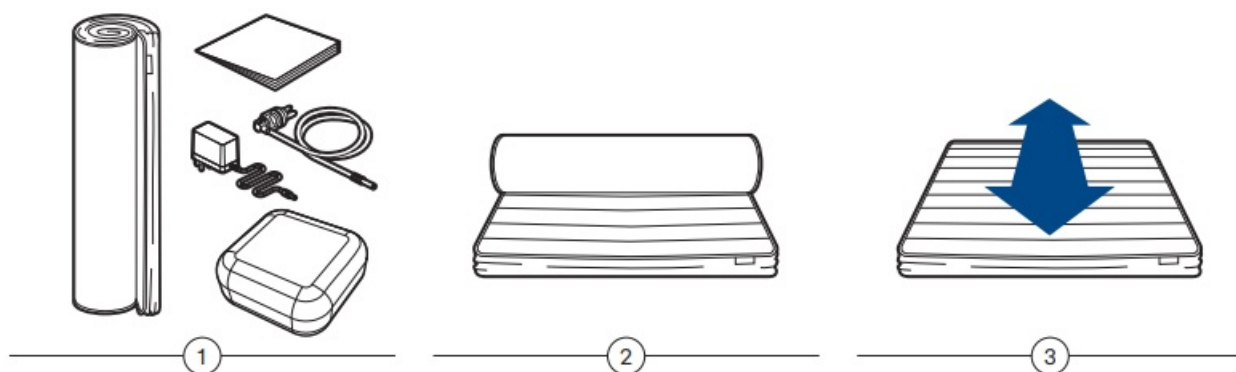
7. AIR RELEASE VALVE

Releases air from the mattress

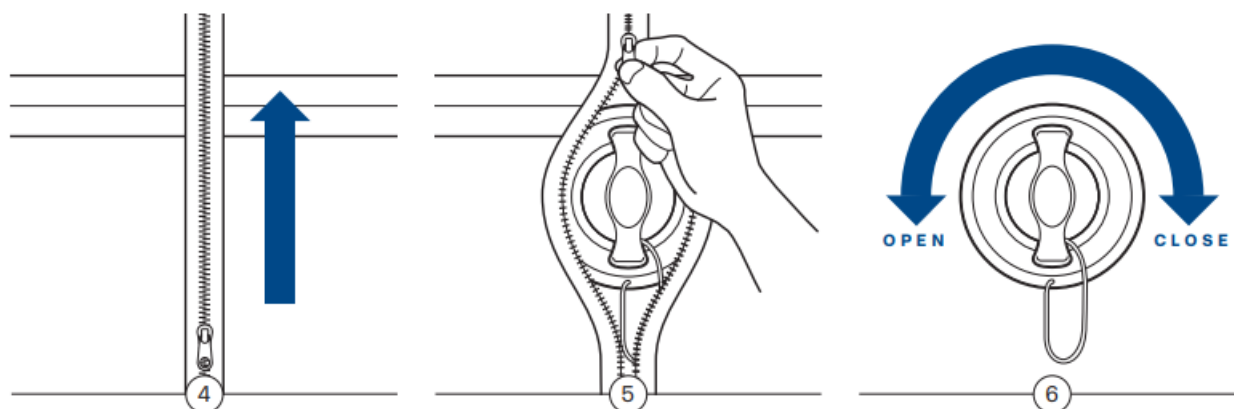
8. CONNECTION HOSE PORT

Where the connection hose connects to the controller

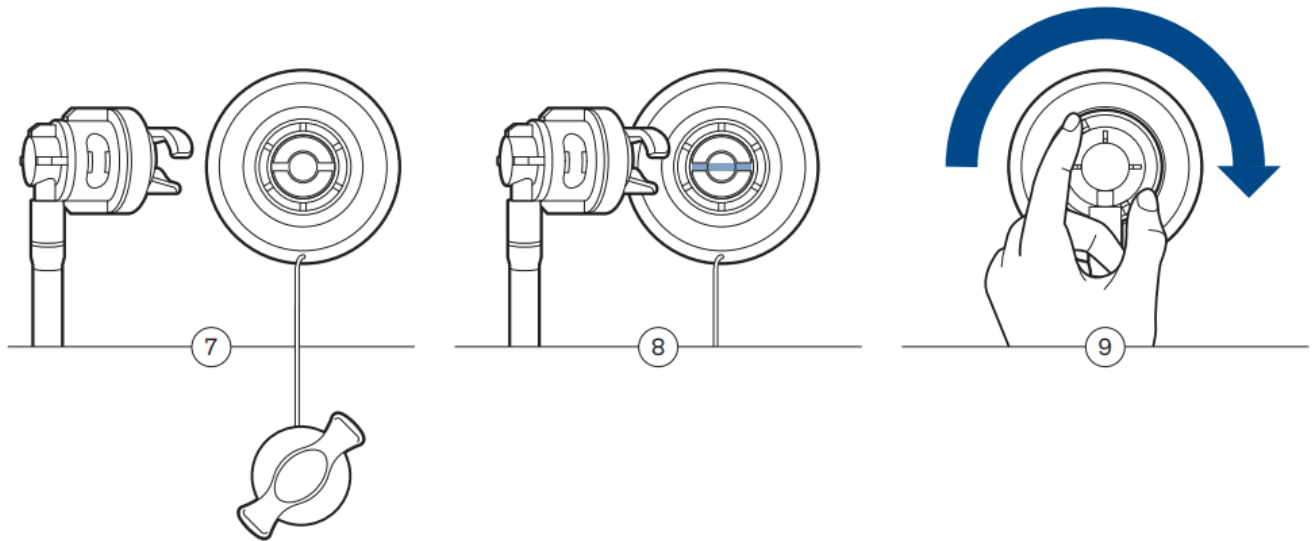
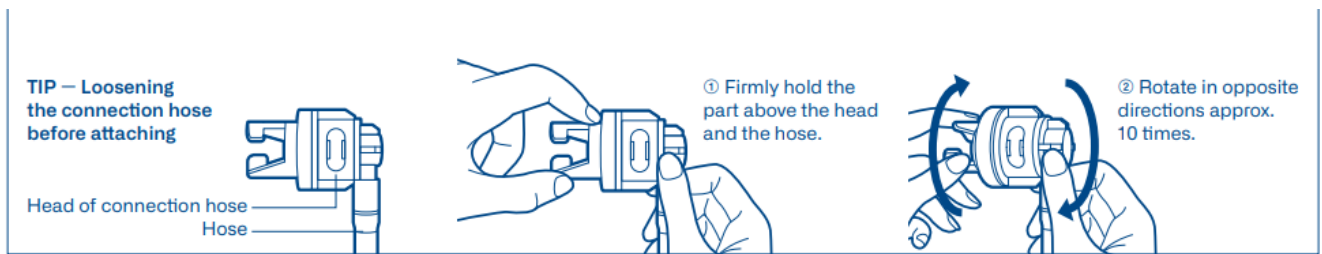
MATTRESS AND CONTROLLER ASSEMBLY



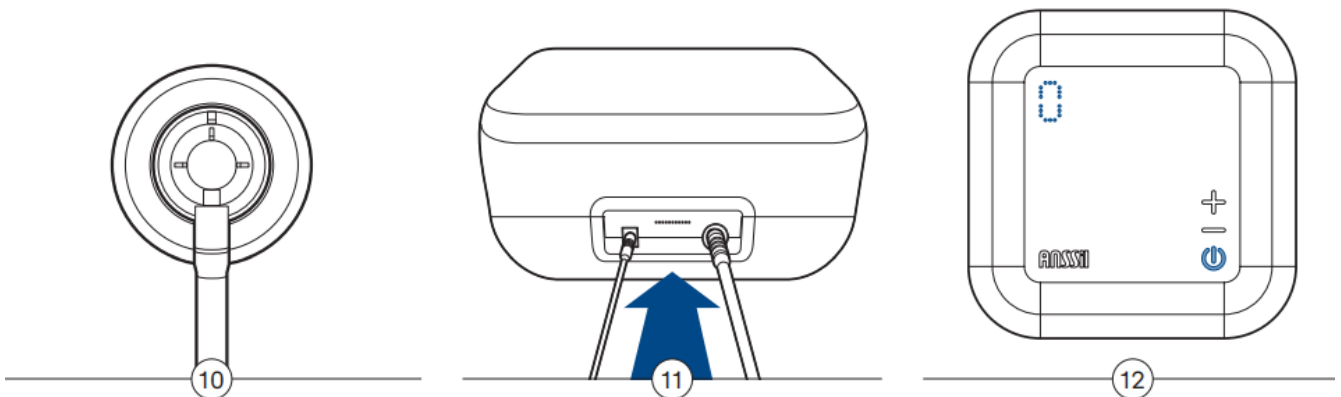
1. Remove the mattress and all other contents from the long box.
2. Place the ANSSil mattress wherever you will sleep, either on top of a mattress frame or on the floor.
3. Carefully unroll the mattress. Don't forget to remove the packaging!



4. Check the zipper at the bottom of the mattress.
Note that the zipper shape may vary by model.
5. Open the zipper to find the string valve.
Note that the valve shape may vary by model.
6. Twist the valve stopper to open.
Left to open, right to close.

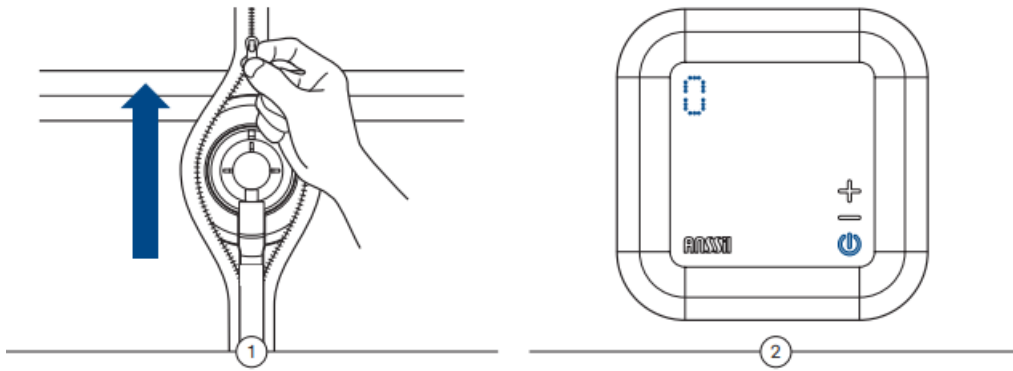


7. Ready to attach the connection hose to the string valve?
8. Align the direction of the head of the connection hose and the – inside of the string valve.
9. Firmly push the connection hose head inside and turn to the right to attach



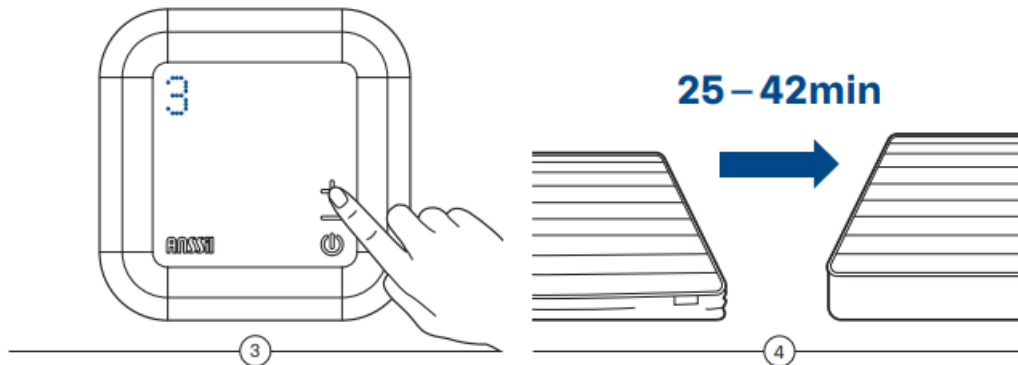
10. Position the connection hose in any position you desire and zip up the close the zipper Attach the adapter and plug it in.
11. The controller and adapter must be connected first before plugging into a power source.
Steps done out of order may break the product.
12. Plug the adapter into a power outlet and check that it is working.

USING THE CONTROLLER



1. Make sure that the controller and mattress are connected properly.
2. Click the power button and make sure the controller powers up.

Initial default number is 0.



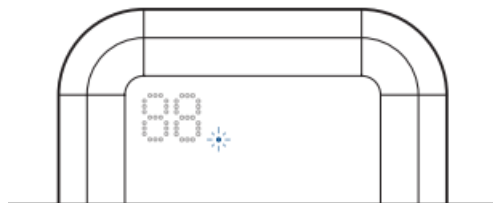
3. Click the + button three times and turn up the ANSSil NUMBER to level 3.
ANSSil NUMBER 3 is standard pressure.
4. Wait for the mattress to inflate.

* Inflation time varies by environment and may take 25–42 minutes.

TIPS FOR USING THE CONTROLLER

1. CASE 1.

To activate the automatic air injection function.



This function is basically deactivated. It should be activated to keep the same ANSSil number.
Holding down + button for 5 seconds turns it on/off.

2. CASE 2.

When I can't find the right setting on the ANSSil NUMBER for me

Refer to the guide below for recommendations by weight and sleeping position.

Some body types and sleep patterns may not be addressed in the guide.

3. CASE 3.

When the ANSSil NUMBER breaks or the location of the controller is inconvenient

The controller may be disconnected and used. (Refer to pages 12, 13 for instructions)

* Even if the power is disconnected and the product is stored away, it will automatically revert to the last used ANSSil NUMBER setting when reconnected.

RECOMMENDED GUIDE FOR ANSSil NUMBER

ANSSil NUMBER offers setting levels from 0 to 10.

Compact model

Hybrid model

Weight	Back sleeper	Side sleeper	Back sleeper	Side sleeper
Less than 79 lbs	3	2	2	1
79 – 99 lbs	4	2	3	1
99 – 126 lbs	4	2	3	1
126 – 150 lbs	5	3	4	2
150 – 174 lbs	5	3	4	2
174 – 201 lbs	6	4	5	3
201 – 225 lbs	7	5	6	4
225 – 249 lbs	8	6	7	5
249 – 300 lbs	9	7	8	6
300 – 351 lbs	10	8	9	7

* Some body types and sleep patterns may not be addressed in the guide.

DISCONNECTING THE MATTRESS AND CONNECTION HOSE



1. Unzip the mattress and make sure that the connection between the connection hose and string valve.
2. Firmly grasp the connection hose head and turn counterclockwise while pushing in to disconnect.

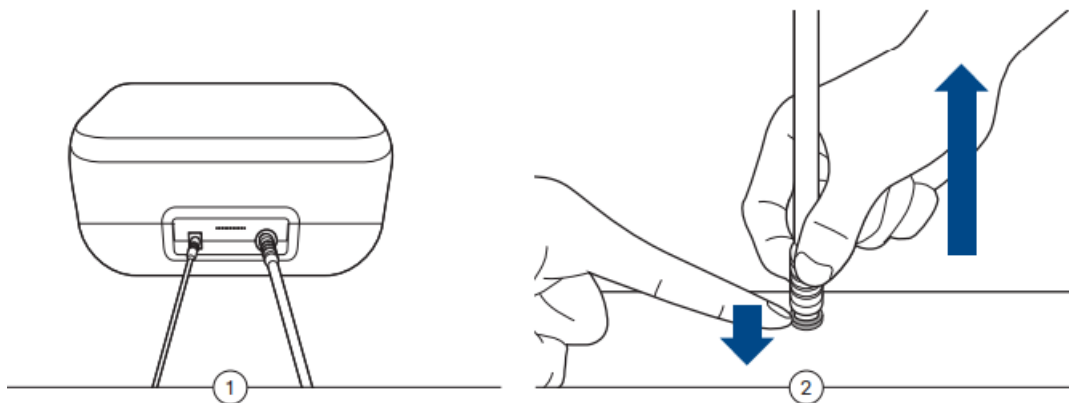
* When disconnecting, some air may escape and cause a loud noise.

This is normal, so do not worry about damaging or breaking the product.

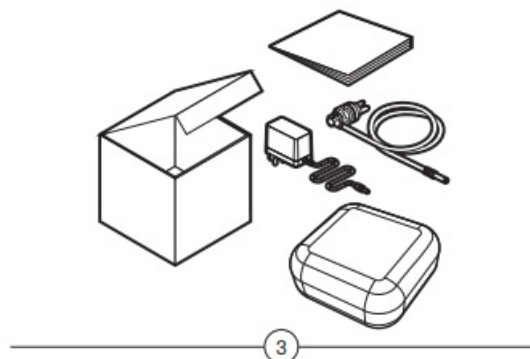


3. After disconnecting the connection hose, check to make sure the string valve stopper is free of debris.
If the tether string connected to the valve stopper enters the string valve opening, an air leak may occur.
4. Turn the string valve stopper to the right to lock and zip up the mattress to finish.

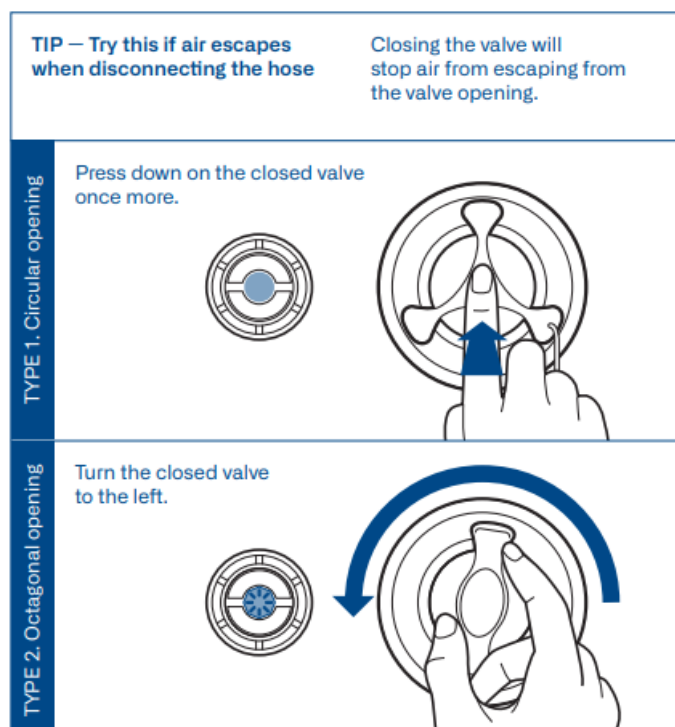
DISCONNECTING THE CONTROLLER AND CONNECTION HOSE



1. Place the controller on a flat surface so that the connection hose is facing upward.
Please perform this action after disconnecting the adapter to avoid electric shock.
2. Hold down the ring on the controller and pull only the hose up and out of the port.
The ring is an internal component of the controller and is not removable.
- 3.

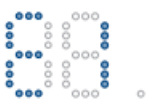




Place the controller accessories in a box for safe storage and easy access.



USAGE GUIDELINES / SAFETY GUIDELINES

DISPLAY ITEMS

Item	Description
 <p>E1</p>	<ul style="list-style-type: none"> • The connection hose is not attached properly. • The line is tangled or blocked. Please check the connection hose. • Wait one minute after checking and try again.
 <p>E2</p>	<ul style="list-style-type: none"> • This message displays when device is overheated due to long term usage. • Please make sure the connection hose has not become disconnected. • Wait one minute after checking and try again.
 <p>Automatic air injection light</p>	<ul style="list-style-type: none"> • Automatic air injection being activated, which always keep the same ANSSil number • Holding down + button for 5 seconds turns it on/off.

	ANSSil Twin Size String Mattress [pdf] User Guide Twin Size String Mattress, Twin Size, String Mattress, Mattress
--	--

References

- [ANSSil Twin Size String Mattress](#)
- [User Manual](#)