



aNSONIC NXLD RF Module User Manual

[Home](#) » [aNSONIC](#) » aNSONIC NXLD RF Module User Manual 

aNSONIC NXLD RF Module



Contents

1 NXs LD US/EMEA

- 1.1 NX1 -adapter/carrier:.
- 1.2 Module placed on NX1-Adapter:
- 1.3 Antenna VR5_915:
- 1.4 Antenna LINX FLEX:
- 1.5 Regulations:
- 1.6 Modul Characteristics
- 1.7 Programming via FRQ1 & 2
- Pins:
- 1.8 Tests
- 1.9 LED
- 1.10 jumper

2 Customer Support

3 Documents / Resources

3.1 References

4 Related Posts

NXs LD US/EMEA

The NXLD RF module is a completely new design. The footprint is very small, but the logic & I/O capabilities remain compatible to our flagship NX1. The RF part is designed for the 868/915MHz area with up to 22dBm output power and Long Range DSSS coding.

The higher power compensates for the loss of penetration properties of twice the frequency compared to 434MHz. Furthermore, the use of long-range coding methods results in an additional gain in range. One challenge compared to our 434MHz solutions is the current consumption of up to 130mA, which effects especially small battery driven devices. Therefore, these modules target larger size transmitters with according battery power and/or less frequent transmission events.

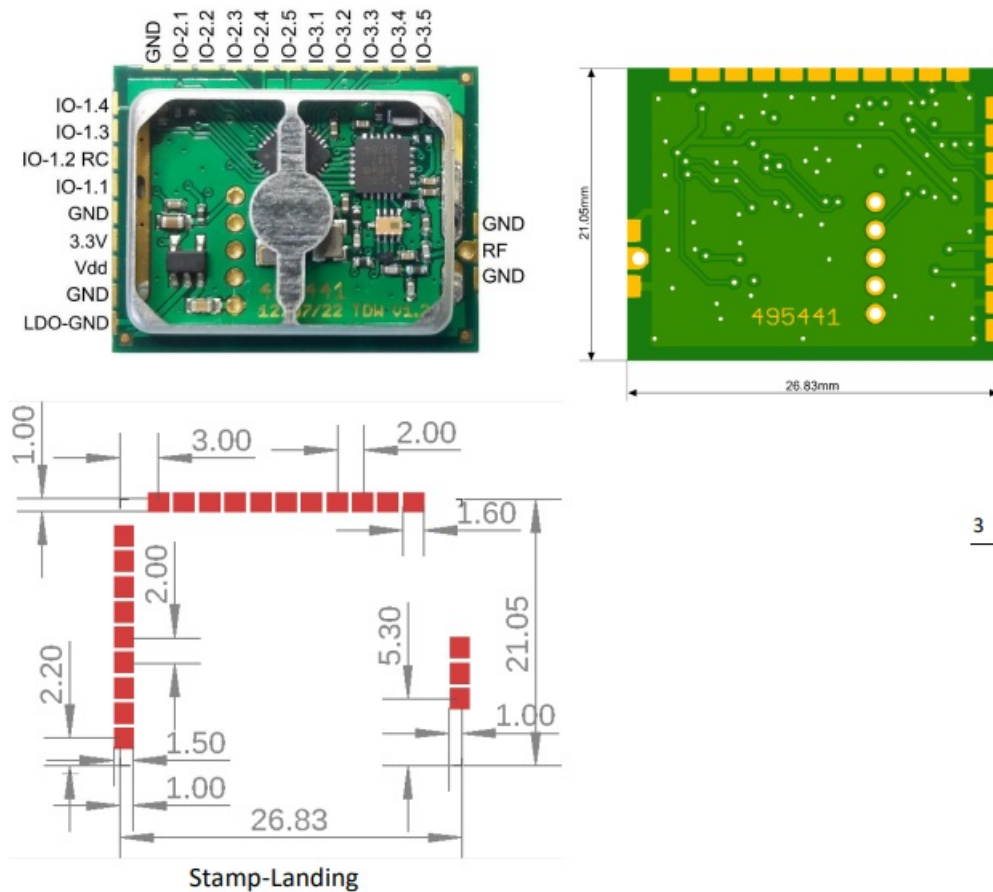
This module is FCC certified under part15-modular approach and can be used as-is (together with one of the two certified antennas) at 915MHz in the US without any new certification process. Customer only has to fill a so-called SDoC (self-declaration, pointing on the FCC number of that module).

Another option is to use the module in EMEA in the 868MHz range, where the module operates in a slot which is allowed to operate at 22dBm output power.

Customers need to order the frequency range area according to their needs.

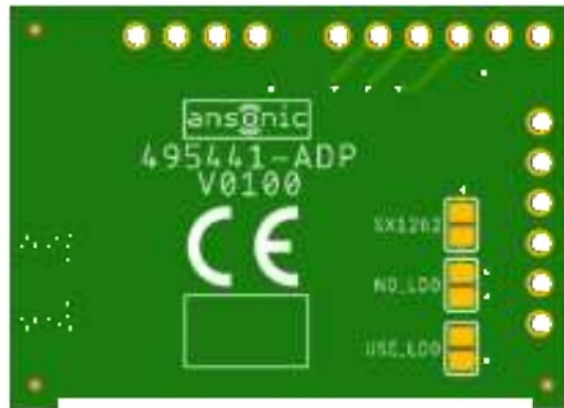
This module shall be operated in packet mode only, operated by the UART connection.

This module shall be operated in packet mode only, operated by the UART connection.



NX1 -adapter/carrier:.

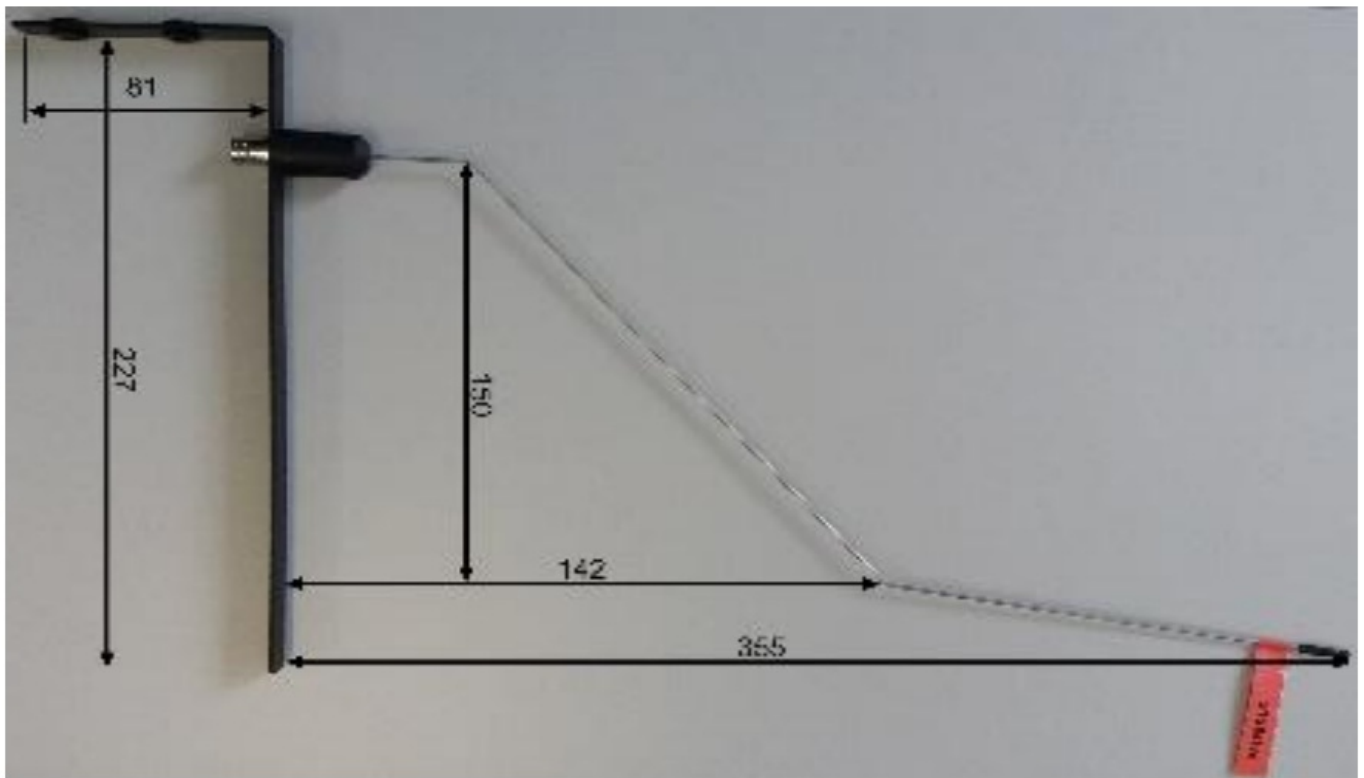
Mechanical compatibility to our NX1-modules can be achieved easily with these carrier boards. Using it makes this module a 1:1 replacement to NX1 (packet mode only)



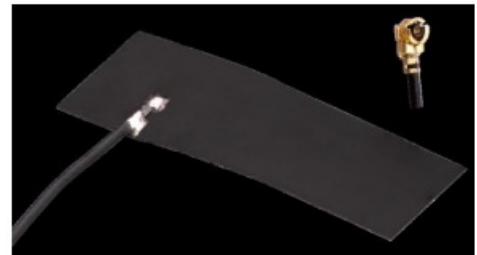
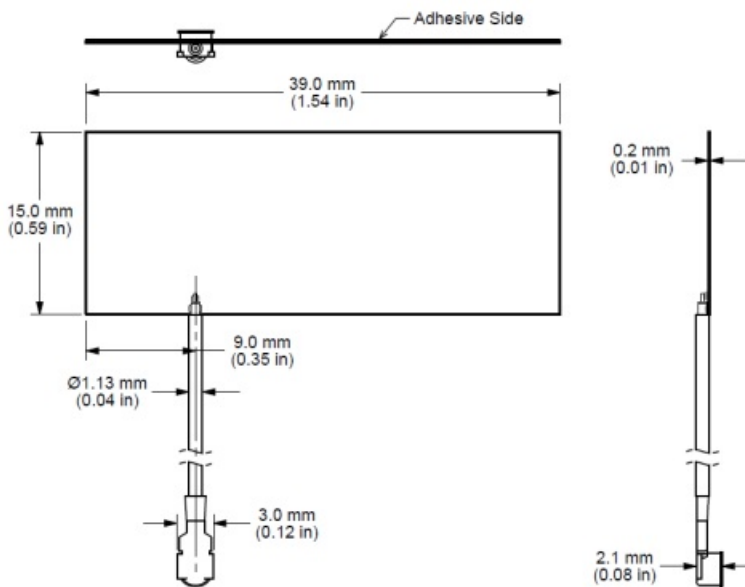
Module placed on NX1-Adapter:



Antenna VR5_915:



Antenna LINX FLEX:



Regulations:

Integration instructions for host product manufacturers

2.2 List of applicable FCC rules

FCC 47 CFR Part 15C 'modular transmitters'

2.3 Specific operational use conditions

Usage is only allowed if the validated antennas, described in this manual, are used. Any other usage requires new FCC certification

2.4 Limited module procedures

Not applicable

2.5 Trace antenna designs

Not applicable

2.6 RF exposure considerations

LORA module max. output: 22dBm Antenna gain: -3dBm

→ Resulting max e.i.r.p. :19dBm = 0.08W

E.i.r.p. is less than the RF exposure evaluation exempted power. So RF exposure evaluation is not required.

The antenna(s) used for this transmitter must be installed to provide a separation distance of at least 20 cm from all persons and must not transmit simultaneously or operated in conjunction with any other antenna or transmitter within a device. End-users, installers and OEM integrators must be provided with antenna installation instructions and transmitter operating conditions for satisfying RF exposure compliance

2.7 Antennas

Applicable antennas are described in this document. Those are part of the FCC certification.

2.8 Label and compliance information

This module falls into the FCC 47 CFR Part 15C 'modular transmitters'. Operation in US-FCC is permitted due to according certification. Import to US is allowed if customers product refer to 'contains FCC ID: 2A28Q-NXLD' and according use.

2.9 Information on test modes and additional testing requirements not

applicable

2.10 Additional testing, Part 15 Subpart B disclaimer

The modular transmitter is only FCC authorized for the specific rule parts listed on the grant.

The host product manufacturer is responsible for compliance to any other FCC rules that apply to the host not covered by the modular transmitter grant of certification.

Modul Characteristics

Absolute Maximum Ratings

Parameter	Min	Typ	Max	Unit	Condition
Supply Voltage Vdd-Pin	-0.3		15	V	1)
Supply Voltage 3.3V-Pin	-0.3		3.9	V	2)
Input / RF-Level				dBm	

1) GND_LDO & GND connected 2) only allowed if GND_LDO is not connected !

Electrical Characteristics

Parameter	Min	Typ	Max	Unit	Condition
Supply Voltage Vdd-Pin	2.1	5	12	V	1) 3)
Supply Voltage Vdd-Pin			5.8	V	1) 4)
Supply Voltage 3.3V-Pin	1.8	3.3	3.6	V	2)

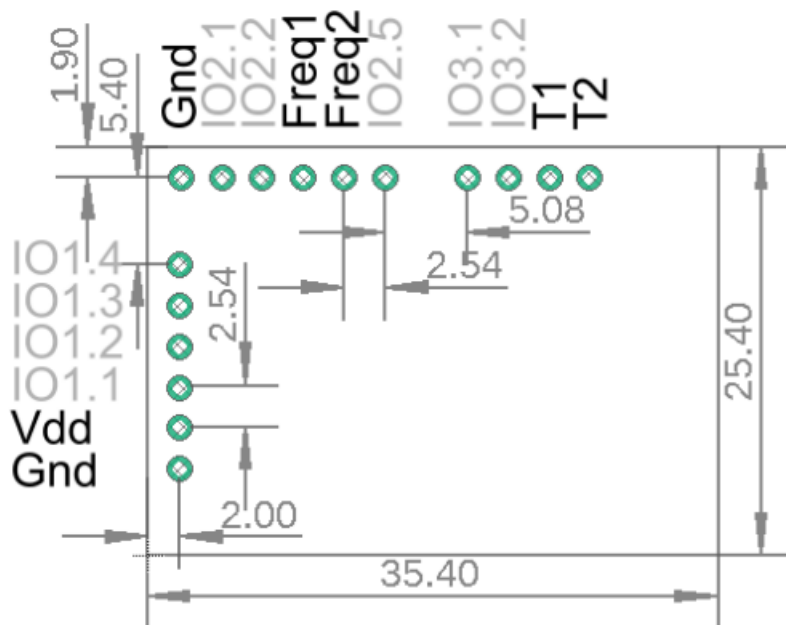
1) GND_LDO & GND connected 3) single-packet-mode (Duty-Cycle 1%) 4) continuous mode@50°C

General Parameters – US version

Applicable Standard/ compliance	FCC 47 part 15C in 915MHz / ETSI in 868MHz
Transceiver type	PLL based fully integrated digital narrow band transceiver
Frequency Band	903 – 927 MHz
Number of channels	4 selectable, see table below
Preprogrammed frequencies	See table below
Modulation	DSSS-LoRa; BW = 500kHz
Data rate	SF10; CR=4/5
Oscillation method	Crystal (TCXO) based PLL oscillator, temperature compensated

Adapter modul top:

Adaptor NX1 v1.0



Eval-PCB:



Connectors:

- **Vdd / Gnd** : powering 3.5 – 5.8V
- **RF-Out** : via UFL-connector
- **F1/F1** : frequency adjustment
- **T1 / T1** : remote testing
- **IO1.1** : mode tx/rx

Programming via FRQ1 & 2 Pins:

Freq1	Freq2	Frequenz
short	short	903 MHz
open	short	911 MHz
short	open	919 MHz
open	open	927 MHz

Tests

Taste (Signal)	Funktion
T1	On/off periodically transmission
T2	Single packet // on/off time-gap at periodically transmission

Both signals T1/T2 can also be connected by their pins.

LED

Flashing while transmitting / receiving

jumper

- **pen:** transmitting mode
- **short:** receiving mode


Stand: Nov. 2022

Customer Support

Ansonic Funk- und Antriebstechnik GmbH • Deilbachtal 23 – 25 • 45257 Essen
Tel: 0201-848090 • Fax: 0201-485385 • eMail: info@ansonic.de – www.ansonic.de



Documents / Resources

	<p>aNSONIC NXLD RF Module [pdf] User Manual NXLD, 2A28Q-NXLD, 2A28QNXLD, NXLD RF Module, RF Module, Module</p>
---	---

References

- [anasonic: Unternehmen](#)
- [anasonic: Unternehmen](#)