



# ANSMANN Mouse Elephant Slumbering Instruction Manual

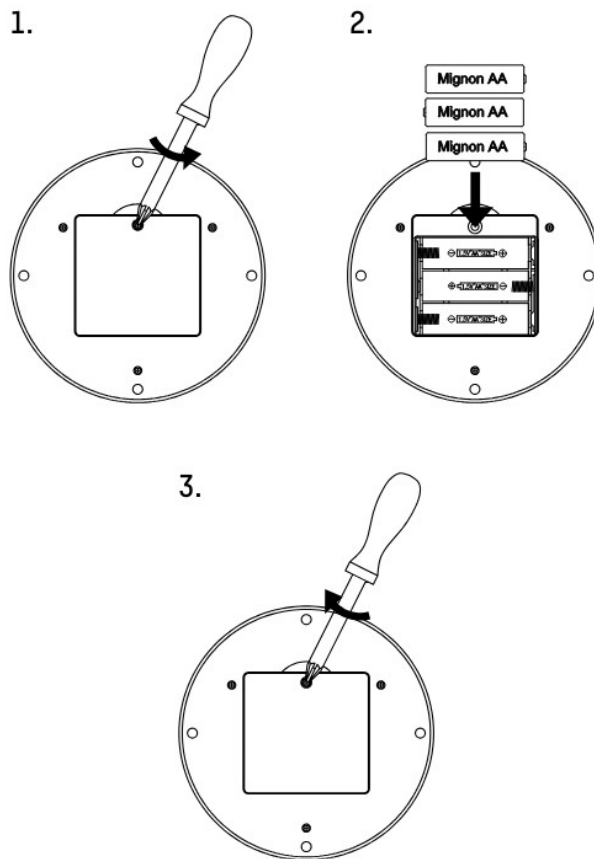
[Home](#) » [ANSMANN](#) » ANSMANN Mouse Elephant Slumbering Instruction Manual 



## Contents


- [1 Mouse Elephant Slumbering](#)
- [2 SAFETY – EXPLANATION OF NOTES](#)
- [3 GENERAL SAFETY INSTRUCTIONS](#)
- [4 BATTERIES](#)
- [5 OPERATION](#)
- [6 LIABILITY DISCLAIMER](#)
- [7 Documents / Resources](#)
  - [7.1 References](#)


## Mouse Elephant Slumbering





## SAFETY – EXPLANATION OF NOTES

Please take note of the following symbols and words used in the operating instructions, on the product and on the packaging:


 = **Information** | Useful additional information about the product circle-check

 = **Note** | The note warns you of possible damage of all kinds triangle-exclam

 = **Caution** | Attention – Hazard can lead to injuries triangle-exclam

 = **Warning** | Attention – Danger! May result in serious injury or death

This lamp is intended for mobile use, the included LED lamp is not suitable for household room lighting. circle-check

 These operating instructions contain important information for the first use and normal operation of this product, referred to in the following text simply as lamp or product.

Read through the complete operating instructions carefully before using the product for the first time. Keep these operating instructions for future use or for future users' reference.

Failure to observe the safety instructions can result in damage to the device or even injuries to persons.

## GENERAL SAFETY INSTRUCTIONS

Do not expose to potentially explosive environments where there are flammable liquids, dusts or gases.

Never submerge the product in water or other liquids.

All illuminated objects must be at least 10cm away from the lamp. Use the product exclusively with the accessories included with it. Improperly inserted batteries could leak and/or cause a fire/ explosion. Keep batteries away from children: Risk of choking or suffocating. Never try to open, crush or heat a standard/rechargeable battery or set it on fire. Do not throw into a fire. When inserting batteries, ensure that the batteries are inserted with the correct polarity. Leaking battery fluid can cause irritation if it comes into contact with the skin. Immediately rinse affected areas with fresh water and then seek medical attention. Do not short-circuit connection terminals or batteries.

Do not attempt to charge non- rechargeable batteries.

Rechargeable batteries must only be charged under the supervision of an adult and must be removed from the device before being charged.

## **⚠ DANGER OF FIRE AND EXPLOSION**

Do not use while still in the packaging.

Do not cover the product – risk of fire.

Never expose the product to extreme conditions, such as extreme heat/cold etc.

Do not use in the rain or in damp areas.

## **⚠ GENERAL INFORMATION**

- This lamp is intended for mobile use, the included LED lamp is not suitable for household room lighting.
- Do not throw or drop
- The LED cover cannot be replaced. If the cover is damaged, the product must be disposed of.
- The LED light source cannot be replaced. If the LED has reached the end of its service life, the complete lamp must be replaced.
- Do not open or modify the product! Repair work shall only be carried out by the manufacturer or by a service technician appointed by the manufacturer or by a similarly qualified person.
- The lamp shall not be placed face-down or allowed to topple face-down.
- Clean the light exclusively with a dry cloth. Do not open the device.

## **⚠ BATTERIES**

- Always change all of the batteries at the same time as a complete set and always use equivalent batteries.
- Do not use batteries if the product appears to be damaged.
- Batteries are not rechargeable. Do not short-circuit batteries.
- Switch the product off before changing the batteries.
- Remove used or empty batteries from the lamp immediately.
- Before using for the first time, open the battery compartment by loosening the screw and insert the batteries ensuring correct polarity.

Note the markings in the battery compartment! Close the battery compartment and secure with the screw.

## **FIRST USE**

This device works with 3× AA alkaline batteries. Battery replacement must always be carried out by an adult (see image). Before using the lamp, please insert 3× AA Mignon alkaline batteries as described in the diagram.

## **OPERATION**

The night light is switched on and off by touching the „touch sensor“ on the base. Thanks to LED technology, the night light saves energy and generates no heat. It switches off automatically after 30 minutes.

## **ENVIRONMENTAL INFORMATION | DISPOSAL**



Dispose of packaging after sorting by material type. Cardboard and cardboard to the waste paper, film to the recycling collection.

Dispose of the unusable product in accordance with legal provisions. The „waste bin“ symbol indicates that, in the EU, it is not permitted to dispose of electrical equipment in household waste. For disposal, pass the product on to a specialist disposal point for old equipment, use the return and collection systems in your area or contact the dealer from whom you purchased the product.



Do not dispose of primary (disposable) batteries and rechargeable batteries with the household waste. Consumers are legally obliged to dispose of primary (disposable) batteries and rechargeable batteries separately. Primary (disposable) batteries and rechargeable batteries can be handed in free of charge at a collection point in your municipality/district or in shops so that they can be disposed of in an environmentally friendly way and

valuable raw materials can be recovered. Improper disposal may result in toxic substances being released into the environment, which may have harmful effects on humans, animals and plants.

## ✓ LIABILITY DISCLAIMER

The information contained within these operating instructions can be changed without prior notification. We accept no liability for direct, indirect, incidental or other damage or consequential damage arising through improper handling/use or through disregard of the information contained within these operating instructions.

The product complies with the requirements from the EU directives.

ⒸⒺ Subject to technical changes. We assume no liability for printing errors.

## DESCRIPTION SYMBOLS

ⒸⒺ Conforms to the European directive



UK Conformity Assessed



Waste of Electrical and Electronic Equipment (WEEE-Guideline)



Battery disposal information – Not for household waste



Read the operating instructions carefully before use!



Indoor use only

### Customer service:

ANSMANN AG  
Industriestrasse 10  
97959 Assamstadt  
Germany

Support & FAQ: E-Mail: [hotline@ansmann.de](mailto:hotline@ansmann.de)

Hotline: +49 (0) 6294 / 4204 3400

MA-1800-0016+1800-0017/V01/02-2024

## Documents / Resources



[ANSMANN Mouse Elephant Slumbering](#) [pdf] Instruction Manual  
Mouse Elephant Slumbering, Mouse, Elephant Slumbering, Slumbering

## References

- [User Manual](#)

[Manuals+](#), [Privacy Policy](#)

This website is an independent publication and is neither affiliated with nor endorsed by any of the trademark owners. The "Bluetooth®" word mark and logos are registered trademarks owned by Bluetooth SIG, Inc. The "Wi-Fi®" word mark and logos are registered trademarks owned by the Wi-Fi Alliance. Any use of these marks on this website does not imply any affiliation with or endorsement.