



anslut 425-448 Window Lamp Instruction Manual

[Home](#) » [anslut](#) » anslut 425-448 Window Lamp Instruction Manual 

Contents

- [1 insult 425-448 Window Lamp](#)
- [2 SAFETY INSTRUCTIONS](#)
- [3 TECHNICAL DATA](#)
- [4 ASSEMBLY](#)
- [5 Documents / Resources](#)
- [6 Related Posts](#)



insult 425-448 Window Lamp



SAFETY INSTRUCTIONS

Read the operating instructions carefully before use.

Save them for future reference.

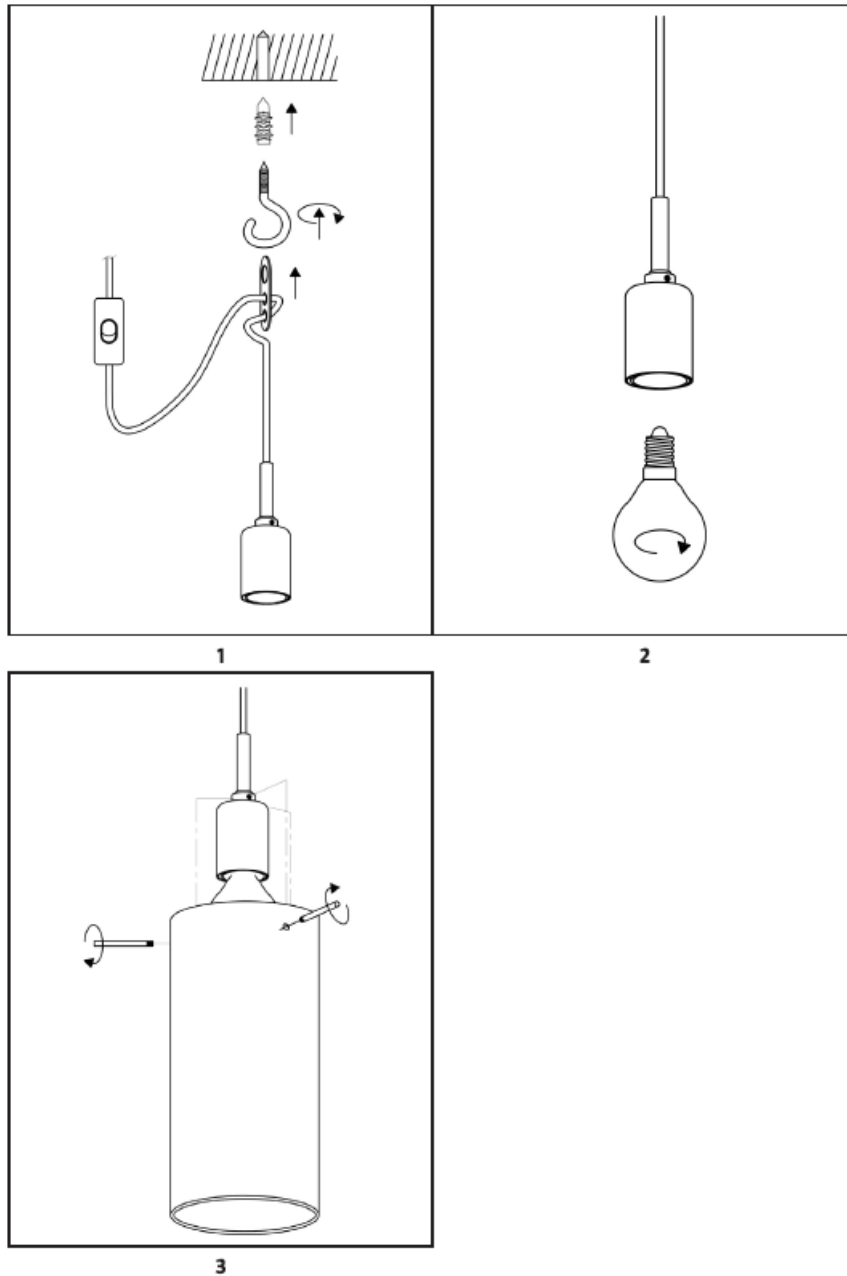
- Only intended for indoor use.
- Remove the plastic covering before use.
- Do not connect the lamp to the mains while it is still in the pack.
- The lamp must not be connected to the mains supply when changing light sources.
- Check that the bulb holder has a light source.
- The power cord is not replaceable, if damaged discard the complete lamp.
- Do not allow children to play with the plastic packaging. Risk of suffocation. The plastic packaging is not a toy.

TECHNICAL DATA


- | | |
|--|-----------------|
| • Rated voltage | 230 V AC/ 50 Hz |
| • Output | Max25 W |
| • Socket | E14 |
| • Intended for light sources of energy class | A++- D |
| • Protection rating | IP20 |
| • Safety class | II |
| • Power cord | 3500 mm |
| • Dimensions | (/J90x240mm |

ASSEMBLY

- Choose a place to fit the hook.
- Hang the window lamp fastener on the hook.
- Screw a bulb into the socket.
- Replace the lamp glass.
- Screw in the screws that hold the lamp glass.
- Plug the power cord into a powerpoint.



Documents / Resources

 <p>anslut</p> <p>425-448</p> <p>425-448 Window Lamp</p>	<p>anslut 425-448 Window Lamp [pdf] Instruction Manual</p> <p>425-448, Window Lamp, 425-448 Window Lamp</p>
--	---

