

anslut 019910 LED Strip Instruction Manual

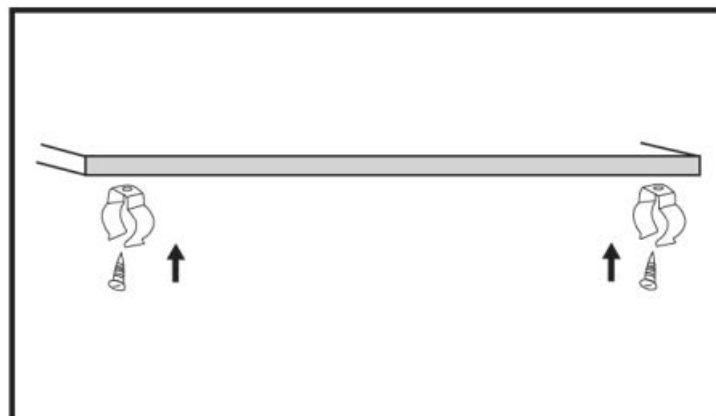
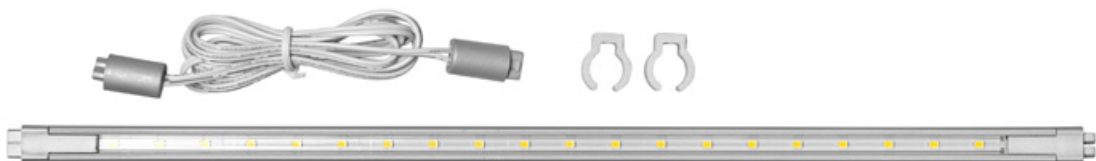
[Home](#) » [anslut](#) » anslut 019910 LED Strip Instruction Manual 

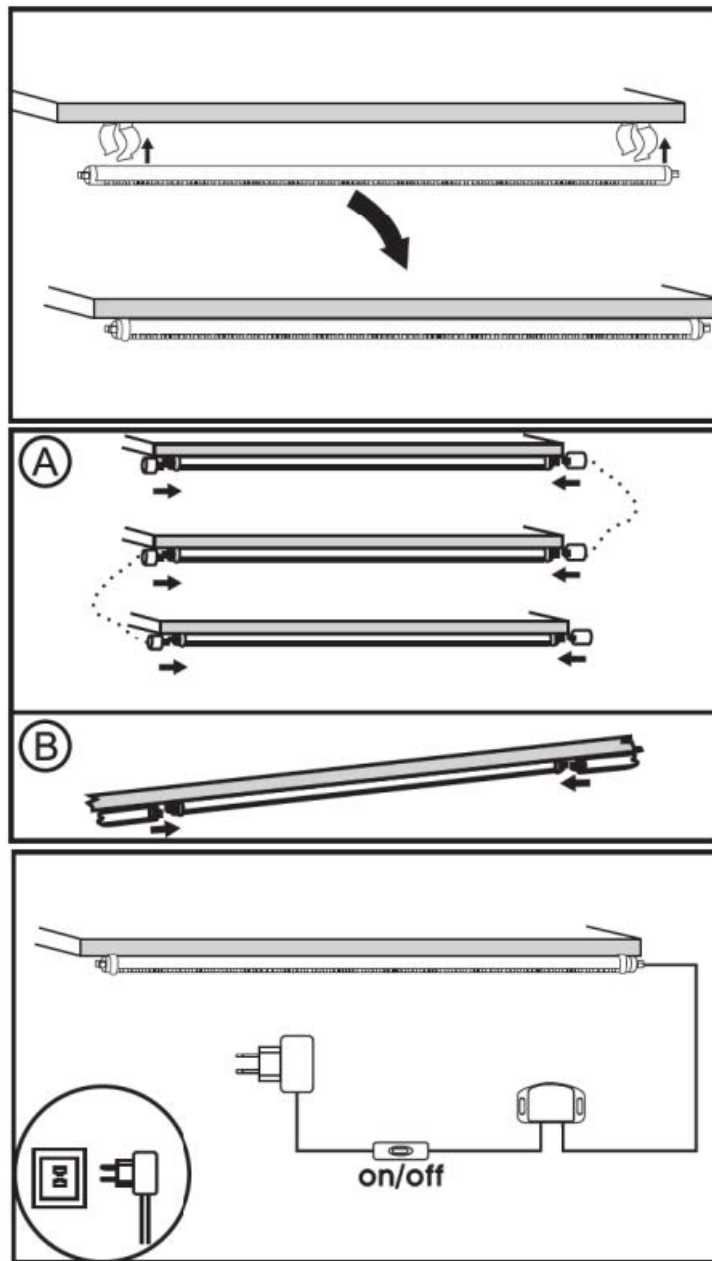
Contents

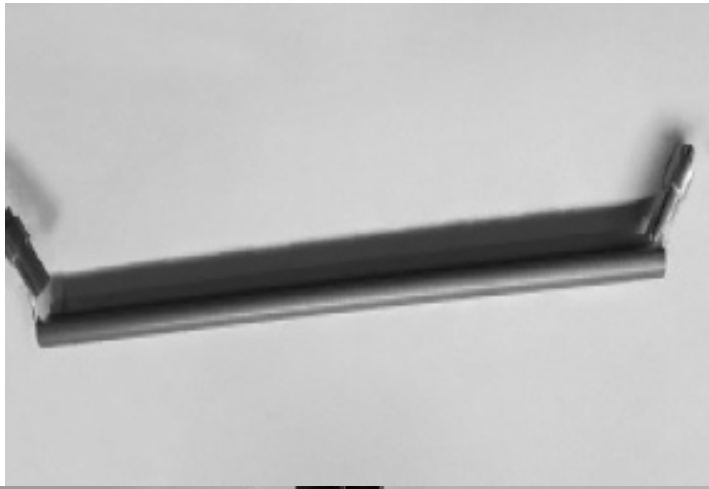
- [1 anslut 019910 LED Strip](#)
- [2 SAFETY](#)
- [INSTRUCTIONS](#)
 - [2.1 TECHNICAL DATA](#)
 - [2.2 INSTALLATION](#)
- [3 Documents / Resources](#)
- [4 Related Posts](#)



anslut 019910 LED Strip












Jula reserves the right to make changes.
For latest version of operating instructions, see www.jula.com

SAFETY INSTRUCTIONS

Carefully read the instructions before use!

- Save these instructions for future reference.
- Check that all connections are properly made before switching on the product.
- If the product does not work, check that the circuit is supplied with voltage.
- Keep children at a safe distance from the product when it is in use.
- If the permitted maximum voltage is exceeded this can damage the product, or reduce its useful life.
- If the permitted maximum temperature is exceeded this can damage the product, or reduce its useful life.

SYMBOLS

	Read the instructions.
	Safety class II.
CE	Approved in accordance with the relevant directives.
	Recycle discarded product in accordance with local regulations.

TECHNICAL DATA

- Output 1,8 W
- No. of LEDs 20
- Colour temperature 3000 K

- Luminous flux 80 lm
- LED strip, size 357 x 12 x 10 mm
- Operating temperature -20 to 40°C
- Storage temperature -20 to 45°C

INSTALLATION

1. Measure the distance between the ends of the light, and mark out and fit the fasteners with the self-tapping screws.

FIG. 1

2. Insert the ends of the light in the fasteners and turn 90°.

FIG. 2

3. Connect the cord to the light (fig. A) or connect to another light (fig. B).

FIG. 3

4. Connect the power cord and switch on.

FIG. 4

REMOVAL

1. Twist loose the plugs in the ends with a pair of pliers.

FIG. 5

2. Pull out the plugs with the pliers.

FIG. 6

3. Pull out the transparent cover and the circuit board.

FIG. 7

4. Remove the circuit board.

FIG. 8


5. Solder the outgoing and ingoing wires in place.

FIG. 9

6. Test the light source by connecting to 12 VDC.

FIG. 10

Documents / Resources

	<p>anslut 019910 LED Strip [pdf] Instruction Manual 019910 LED Strip, 019910, LED Strip, Strip</p>
---	--