



# anslut 018834 LED Floodlight with Motion Detector Instruction Manual

[Home](#) » [anslut](#) » anslut 018834 LED Floodlight with Motion Detector Instruction Manual 



## 018834 LED Floodlight with Motion Detector Instruction Manual

### Contents

- [1 018834 LED Floodlight with Motion Detector](#)
- [2 SAFETY INSTRUCTIONS](#)
- [3 ELECTRICAL SAFETY](#)
- [4 SYMBOLS](#)
- [5 TECHNICAL DATA](#)
- [6 INSTALLATION](#)
- [7 USE](#)
- [8 OVERRIDING THE DETECTOR](#)
- [9 Documents / Resources](#)
  - [9.1 References](#)

**018834 LED Floodlight with Motion Detector**



Item no. 018834

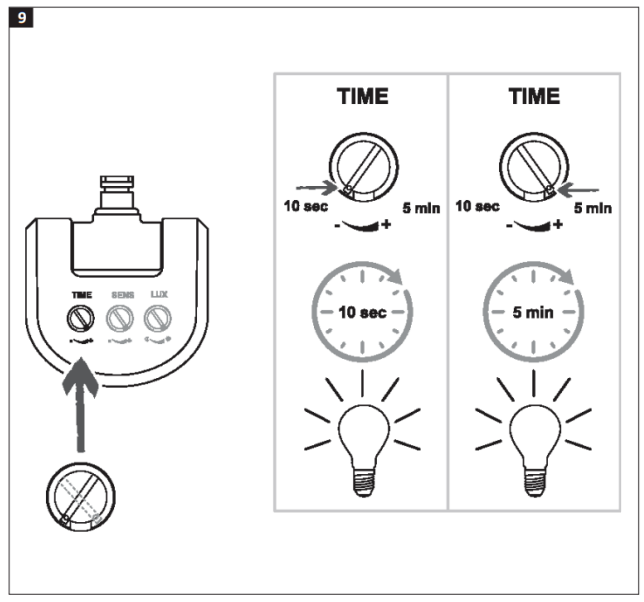
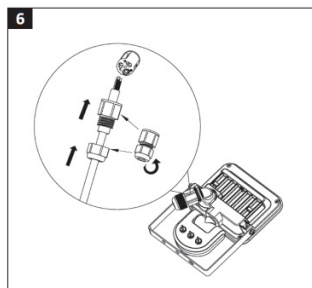
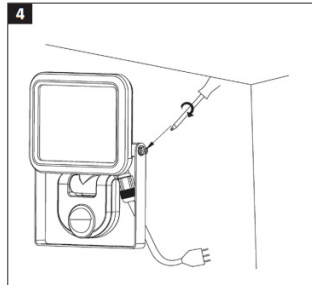
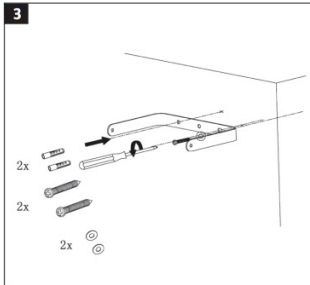
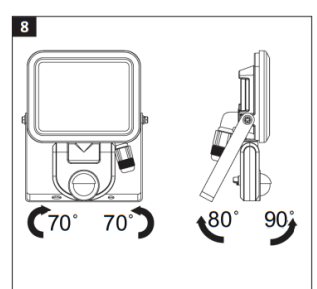
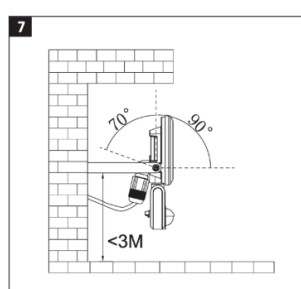
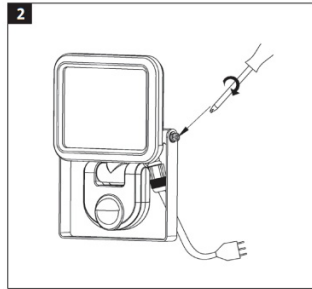
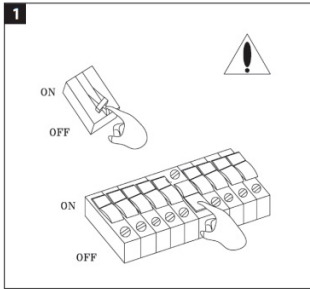
## **FLOODLIGHT WITH MOTION DETECTOR**

### **OPERATING INSTRUCTIONS**

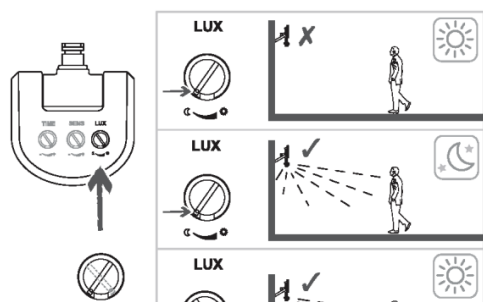
Important! Read the user instructions carefully before use. Save them for future reference. (Translation of the original instructions).

### **Care for the environment!**

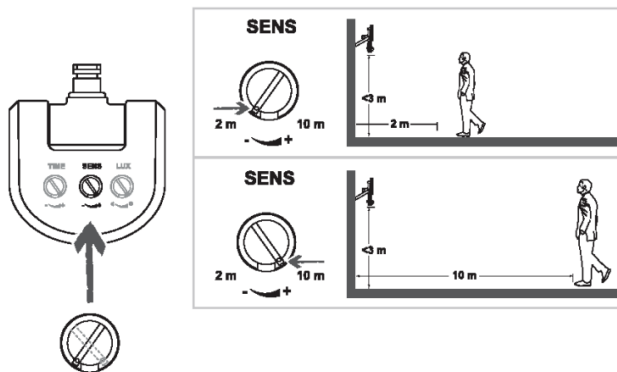
Recycle discarded product in accordance with local regulations.



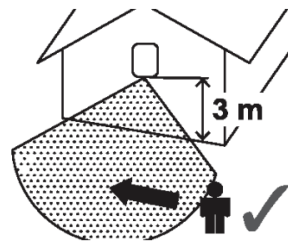
10



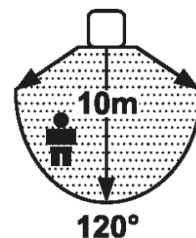
11



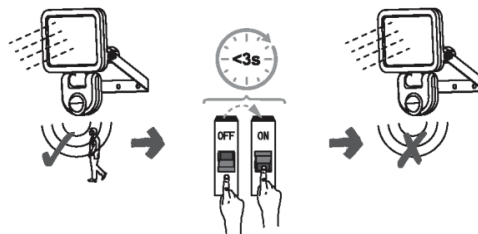
12



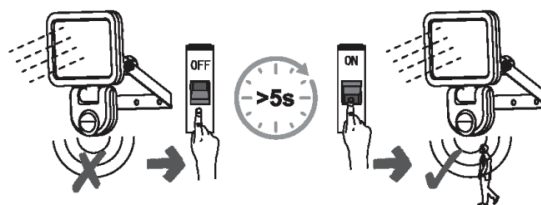
13



14



15



## SAFETY INSTRUCTIONS

- Always switch off the power supply before installation, connection and service.
- The product must be connected to an earthed power supply on installation.
- The product can be mounted on a surface of flammable material.
- The recommended installation height is max 3 meters above the ground.
- Check that the mains voltage corresponds to the rated voltage on the type plate. Incorrect connection can




result in electric shock. The electrical installation should be carried out by an authorised electrician.

- The product detects heat and movement and goes on when someone comes within the detection range. The product is not guaranteed to maintain security or prevent Unauthorised entry.
- Never modify the product, this could result in serious personal injury and will invalidate the warranty.
- The product must be discarded if the glass front is cracked.
- The LED light source is not replaceable. When the light source has reached the end of its useful life the complete product must be replaced.
- When you find glowing when plugged in, such kind of glowing is no harm to people. To stop the glowing, please pull out the plug, rotate it in 180 degree (i.e. switch the plug poles) and plug in again.

## ELECTRICAL SAFETY

New installations and extensions to existing systems should always be carried out by an authorised electrician. If you have the necessary experience and knowledge (otherwise contact an electrician), you can replace power switches and wall sockets, fit plugs, extension cords and light sockets. Incorrect installation can result in fatal injury and the risk of fire.

## SYMBOLS

	DANGER: Risk of electric shock.
	Approved in accordance with the relevant directives.
	Recycle discarded product as electrical waste.

## TECHNICAL DATA

Rated voltage	230 V ~ 50 Hz
Output	20 W
Protection rating	IP54
Energy class	F
Luminous flux	1650 lm
Colour temperature	4000 K
Life span	30 000 h
Detection range	10 m/120° (max)
Dimmable	No

## INSTALLATION

1. Switch off the power supply.

**FIG. 1**

2. Remove the bracket from the housing.

**FIG. 2**

3. Use the bracket as a template to mark out the mounting holes and drill holes in these positions. Put expander plugs in the holes. Screw on the bracket.

**FIG. 3**

4. Fit the lamp housing on the bracket.

**FIG. 4**

5. Connect the live wire **L** (brown), neutral wire **N** (blue) and earth wire (yellow/green).

**FIG. 5**

6. Fit the cable grommet.

**FIG. 6**

7. Put the power switch in the **ON** position.

**NOTE:**

The product is only intended to be mounted on a wall. The maximum mounting height is 3 meters.

**USE**

- The product can be angled down at 90° and angled up at 70°.

**FIG. 7**

- The detector can be turned 70° to the right and left, and up 90° and down 80°.

**FIG. 8**

- There are three control dials for the infrared detector.
  - **TIME** – To set how long the floodlight stays on.
  - **LUX** – To set the brightness of the floodlight.
  - **SENS** – To set the sensitivity of the detector.

**TIME – TIME SETTING**

This dial is used to set the time the light stays on after the last detected movement. The time interval is 10 seconds to 5 minutes. Turn the dial clockwise for shorter time and anticlockwise for longer time. **FIG. 9**

**LUX – TO ADJUST THE BRIGHTNESS**

This dial is used to set the brightness at which the detector switches on the light. With the dial set to the sun symbol the light goes on both during the day (bright surrounding light) and night (poor surrounding light), and with the dial set to the moon symbol the light only goes on at night. To correctly set the brightness, wait until the surrounding light reaches the required brightness. Turn the dial all the way to the moon symbol. Now turn the dial slowly back to the sun symbol until the movement detector switches on the light. The light will now switch on when movement is detected and the surrounding light is the same as or less than the brightness setting. **FIG. 10**

**SENS – DETECTOR SENSITIVITY**

The sensitivity of the detector varies with the ambient temperature. The sensitivity is higher at low ambient temperature. The detector is most sensitive when the **SENS** dial is turned all the way to (+).

**FIG. 11**

**FIG. 12**

**FIG. 13**

**OVERRIDING THE DETECTOR**

1. Activate detector override.

FIG. 14

2. Deactivate detector override.


FIG. 15



JULA AB, BOX 363, SE-532 24 SKARA

2023-06-20  
© Jula AB

Documents / Resources

	<p><a href="#">anslut 018834 LED Floodlight with Motion Detector</a> [pdf] Instruction Manual</p> <p>018834 LED Floodlight with Motion Detector, 018834, LED Floodlight with Motion Detector, Floodlight with Motion Detector, Motion Detector, Detector</p>
--	--

References

- [Jula’s products for home and garden](#)