



anslut 007356 Lamp Socket DCL Instruction Manual

[Home](#) » [anslut](#) » anslut 007356 Lamp Socket DCL Instruction Manual 



007356 Lamp Socket DCL
Instruction Manual



Contents

- [1 007356 Lamp Socket DCL](#)
- [2 SAFETY INSTRUCTIONS](#)
- [3 TECHNICAL DATA](#)
- [4 ASSEMBLY](#)
- [5 Documents / Resources](#)
- [6 Related Posts](#)

007356 Lamp Socket DCL



LAMP SOCKET DCL

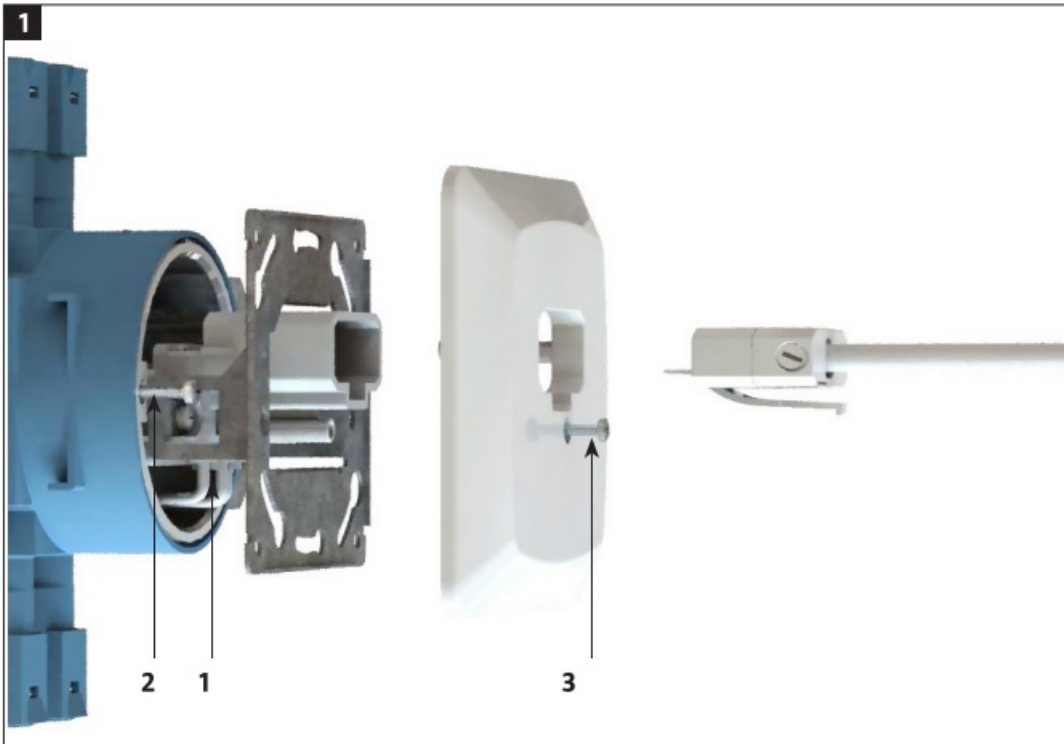
OPERATING INSTRUCTIONS

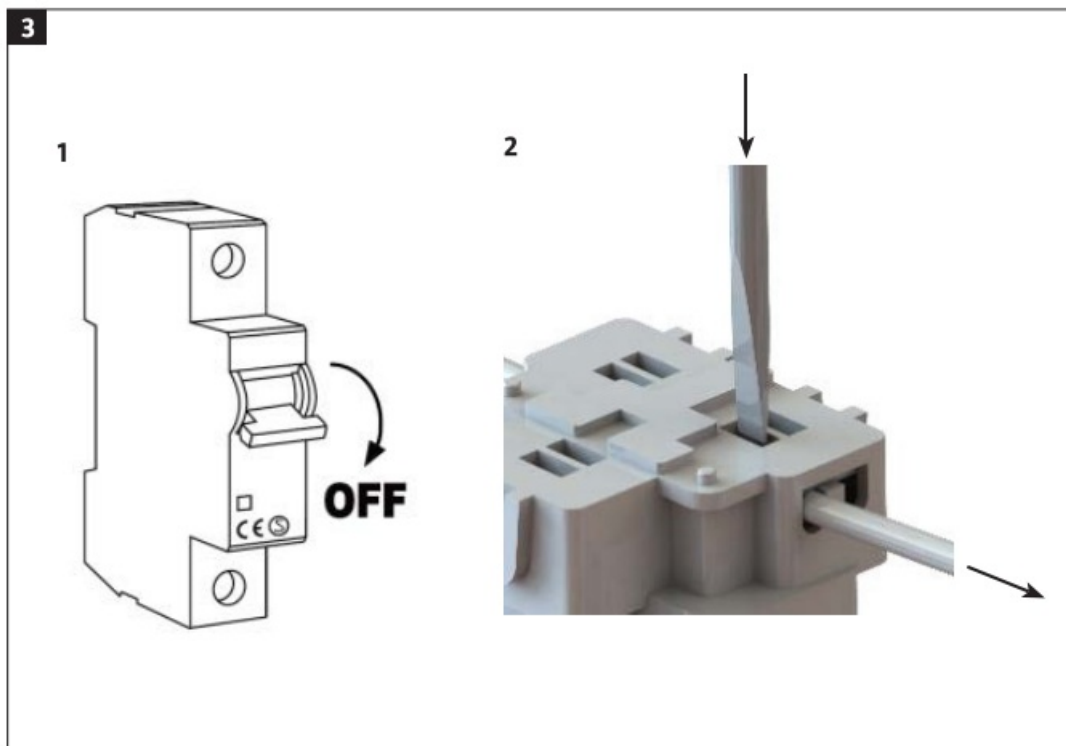
Important! Read the user Instructions carefully before use. Save them for future reference. (Translation of the original instructions).

Care for the environment!

Recycle discarded product in accordance with local regulations.

Jule reserves the right to make changes. For latest version of operating instructions, see www.jula.com





SAFETY INSTRUCTIONS

- Do not connect power strips to each other.
- Do not cover the power strip.

ELECTRICAL SAFETY

New installations and extensions to existing systems should always be carried out by an authorised electrician. If you have the necessary experience and knowledge (otherwise contact an electrician), you can replace power switches and wall sockets, fit plugs, extension cords and light sockets. Incorrect installation can result in fatal Injury and the risk of fire.

WARNING!

Only for permanent Installation.

SYMBOLS

	Read the instructions.
	Approved in accordance with the relevant directives.
	Recycle discarded product as electrical waste.

TECHNICAL DATA

Rated voltage	230 V – 50 Hz
Size	95 x 95 mm
Current	6 A

ASSEMBLY

INSTALLATION

1. Connect the wires. Fit the attachment plate on the wall box with the screws.
2. Put on the casing and tighten the screw. **FIG 1**

Releasing the casing

Release the casing as shown.

FIG. 2


Disconnection of the conductors

FIG. 3



JU IA AB, BOX 363, SE-532 24 VARA
2022-03-23 0
Jula AB

Documents / Resources

	<p>anslut 007356 Lamp Socket DCL [pdf] Instruction Manual</p> <p>007356 Lamp Socket DCL, 007356, Lamp Socket DCL, Socket DCL, Lamp Socket, Socket</p>
---	---