



[Home](#) » [anslut](#) » **anslut 007356 DCL Socket Lamp Instruction Manual** 

Contents [[hide](#)]

- [1 anslut 007356 DCL Socket Lamp](#)
- [2 Product Usage Instructions](#)
- [3 INTRODUCTION](#)
- [4 SAFETY INSTRUCTIONS](#)
- [5 TECHNICAL DATA](#)
- [6 ASSEMBLY](#)
- [7 Care for the environment](#)
- [8 FAQ](#)
- [9 Documents / Resources](#)
 - [9.1 References](#)



anslut 007356 DCL Socket Lamp



Specifications

- **Rated Voltage:** 230 V ~ 50 Hz
- **Size:** 95 x 95 mm
- **Current:** 6 A

Product Usage Instructions

Safety Instructions

- **ELECTRICAL SAFETY:** New installations and extensions to existing systems should always be carried out by an authorised electrician.
- If you have the necessary experience and knowledge (otherwise, contact an electrician), you can replace power switches and wall sockets, fit plugs, extension cords, and light sockets. Incorrect installation can result in fatal injury and the risk of fire.
- **WARNING!** Only for permanent installation.

Symbols

- Read the instructions.
- Approved by the relevant directives.

- Recycle discarded products as electrical waste.

Installation

1. Make connections using a screwdriver, and mount the mounting plate on the wall box.

INTRODUCTION

- **Important!** Read the user instructions carefully before use.
- Save them for future reference.
- (Translation of the original instructions).

SAFETY INSTRUCTIONS

- Do not connect power strips.
- Do not cover the power strip.


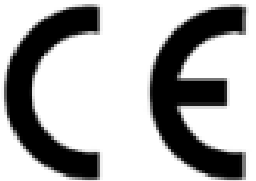


ELECTRICAL SAFETY

- New installations and extensions to existing systems should always be carried out by an authorised electrician.
- If you have the necessary experience and knowledge (otherwise contact an electrician), you can replace power switches and wall sockets, fit plugs, extension cords and light sockets.
- Incorrect installation can result in fatal injury and the risk of fire.

WARNING!

Only for permanent installation.

SYMBOLS

	<p>Read the instructions.</p>
	<p>Approved under the relevant directives.</p>
 	<p>Recycle discarded products as electrical waste.</p>

TECHNICAL DATA

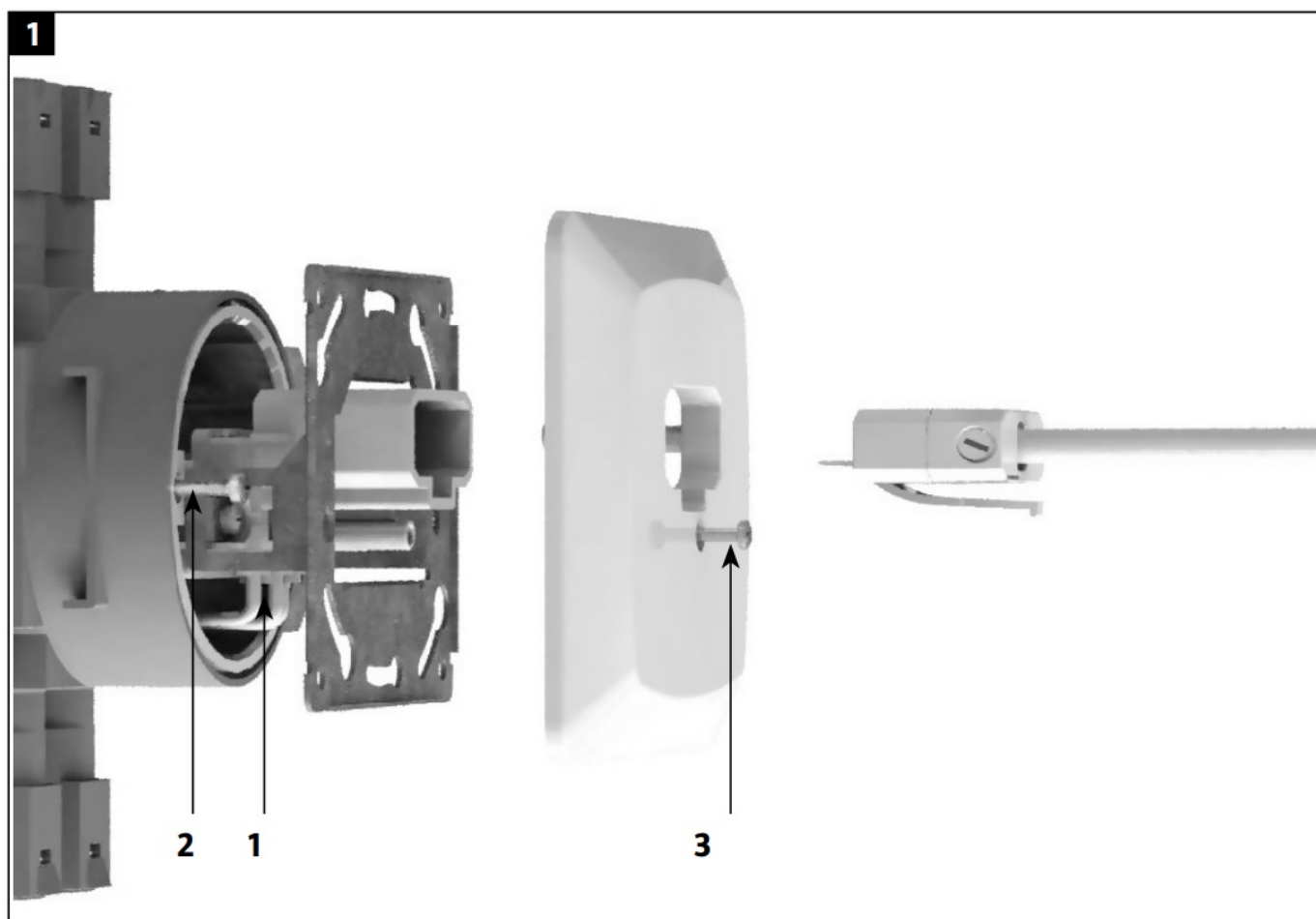
- **Rated voltage** 230 V ~ 50 Hz
- **Size** 95 x 95 mm
- **Current** 6 A

ASSEMBLY

INSTALLATION

- Connect the wires. Fit the attachment plate on the wall box with the screws.
- Put on the casing and tighten the screw.

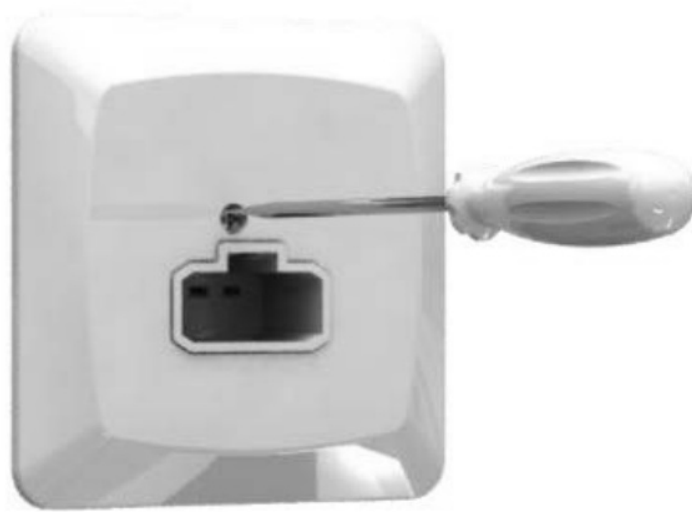
FIG. 1



Releasing the casing

Release the casing as shown.

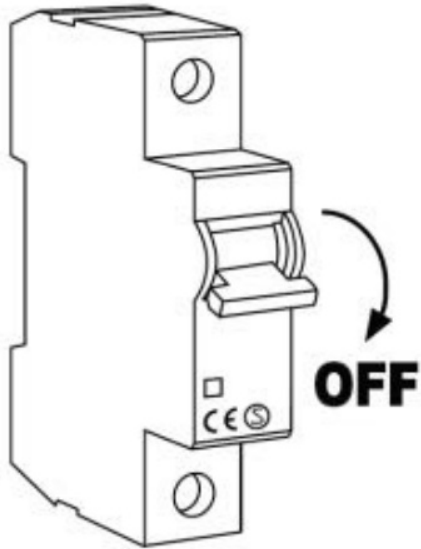
FIG. 2



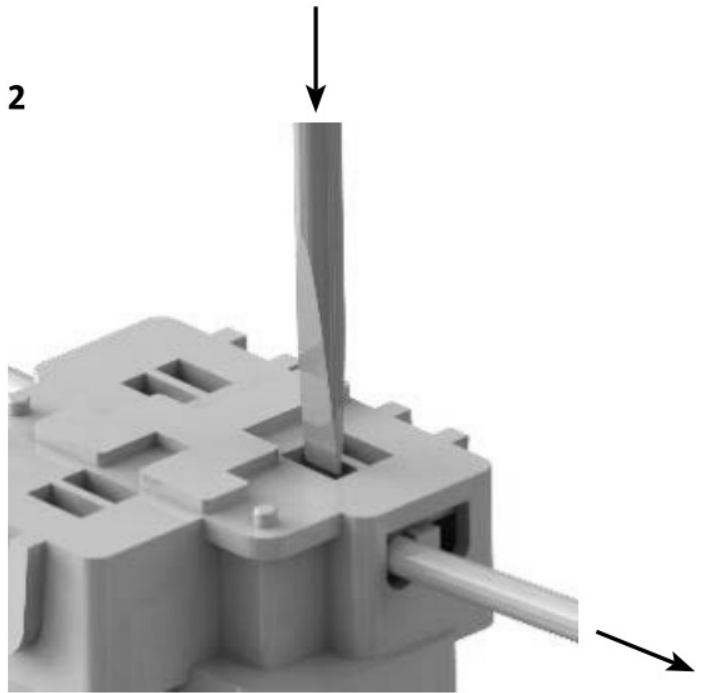
Disconnection of the conductors

FIG. 3

1




2



Care for the environment



-  Recycle discarded products in accordance with local regulations.
- Jula reserves the right to make changes.
- For the latest version of the operating instructions, see www.jula.com

FAQ

- **Q: What should I do if I need to dispose of the product?**
 - **A:** Recycle discarded products as electrical waste in accordance with local regulations.
- **Q: Can I replace power switches and wall sockets myself?**
 - **A:** It is recommended to have an authorised electrician perform new installations or extensions to existing systems.
 - If you have the necessary experience and knowledge, you can replace power switches and wall sockets.

- **Q: What is the rated voltage of the product?**
 - **A:** The rated voltage is 230 V ~ 50 Hz.

Documents / Resources

	anslut 007356 DCL Socket Lamp [pdf] Instruction Manual 130386, 007356, 007356 DCL Socket Lamp, 007356, DCL Socket Lamp, Socket Lamp, Lamp
---	--

References

- [User Manual](#)

007356, 007356 DCL Socket Lamp, 130386, anslut, DCL Socket Lamp, lamp, Socket
anslut Lamp

Leave a comment

Your email address will not be published. Required fields are marked *

Comment *

Name

Email

Website

☐ Save my name, email, and website in this browser for the next time I comment.

Post Comment

Search:

e.g. whirlpool wrf535swhz

Search

[Manuals+](#) | [Upload](#) | [Deep Search](#) | [Privacy Policy](#) | [@manuals.plus](#) | [YouTube](#)

This website is an independent publication and is neither affiliated with nor endorsed by any of the trademark owners. The "Bluetooth®" word mark and logos are registered trademarks owned by Bluetooth SIG, Inc. The "Wi-Fi®" word mark and logos are registered trademarks owned by the Wi-Fi Alliance. Any use of these marks on this website does not imply any affiliation with or endorsement.