



anslut 007248 Lamp Socket DCL Instruction Manual

[Home](#) » [anslut](#) » anslut 007248 Lamp Socket DCL Instruction Manual 

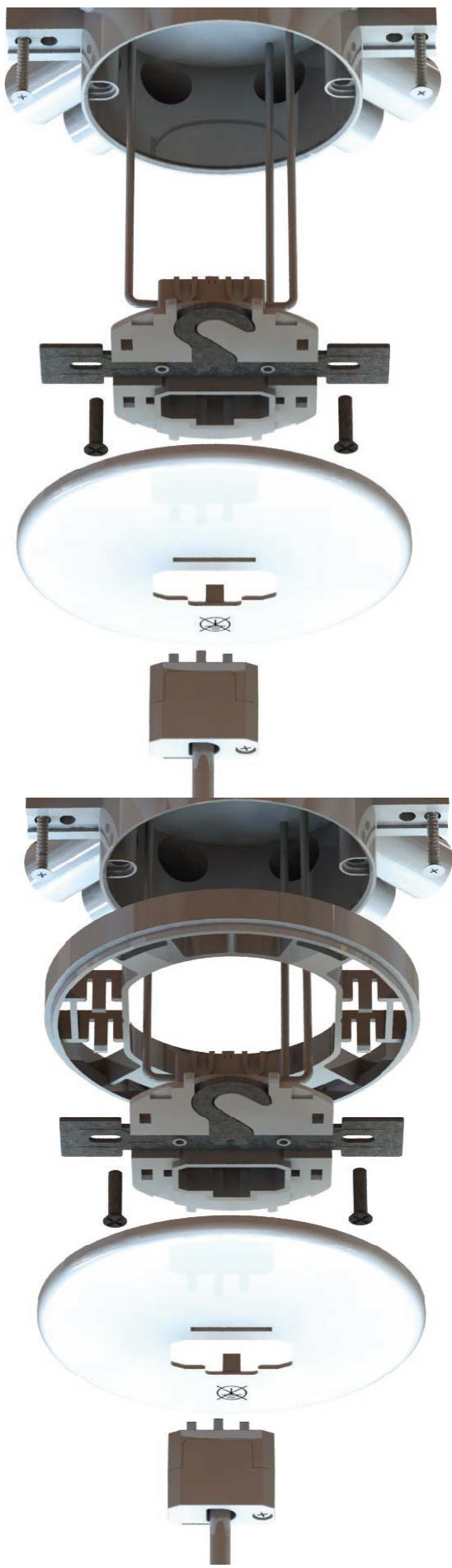
Contents

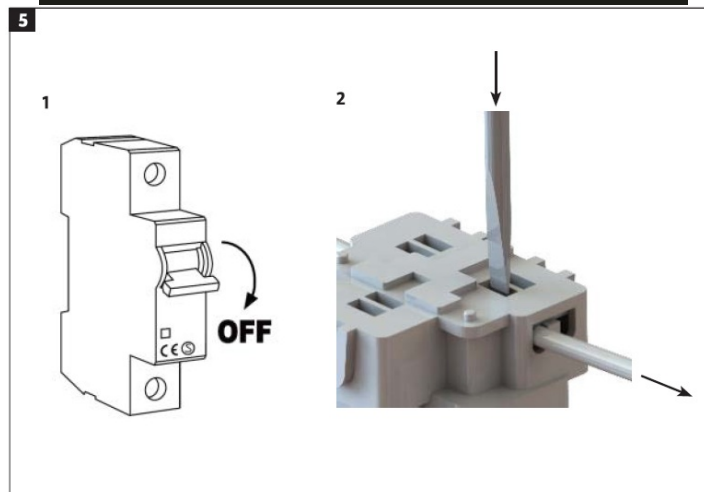
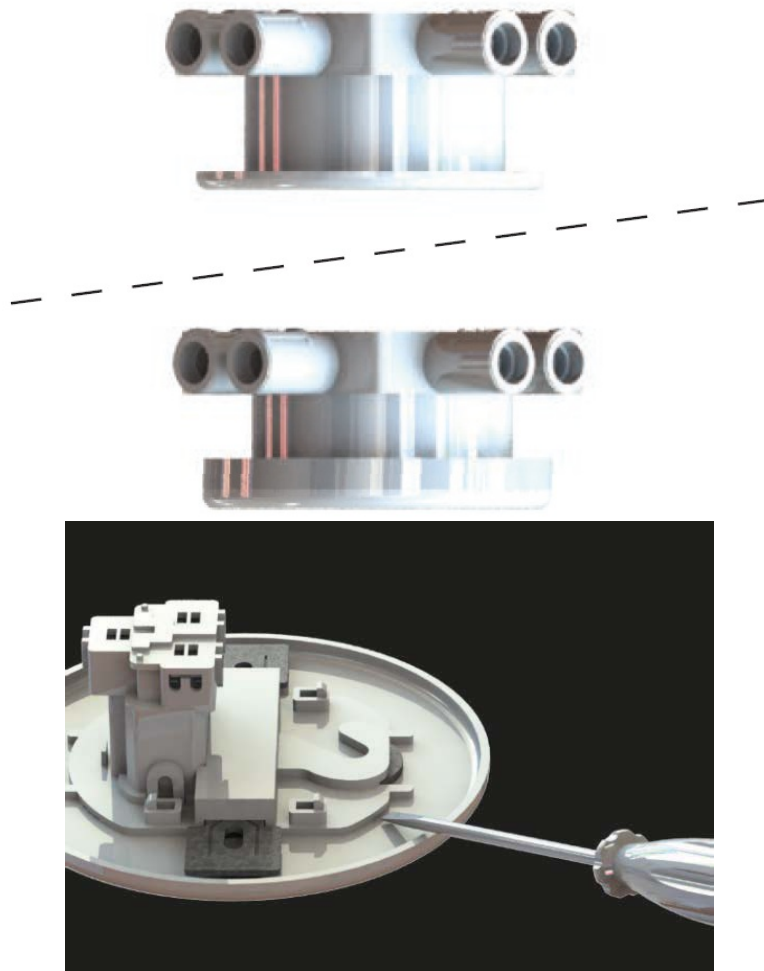
- [1 anslut 007248 Lamp Socket DCL](#)
- [2 SAFETY INSTRUCTIONS](#)
 - [2.1 ASSEMBLY](#)
- [3 Documents / Resources](#)
- [4 Related Posts](#)



anslut 007248 Lamp Socket DCL







SAFETY INSTRUCTIONS



- Do not connect power strips to each other.
- Do not cover the power strip.

ELECTRICAL SAFETY

New installations and extensions to existing systems should always be carried out by an authorized electrician. If you have the necessary experience and knowledge (otherwise contact an electrician), you can replace power switches and wall sockets, fit plugs, extension cords and light sockets. Incorrect installation can result in fatal injury and the risk of fire.

WARNING! The product is only intended for permanent installation.

SYMBOLS

	Read the instructions.
CE	Approved in accordance with the relevant directives.
	Recycle discarded product as electrical waste.

TECHNICAL DATA

- Rated voltage 230 V ~ 50 Hz
- Diameter r/J 110mm
- Max. capacity 15 kg
- Current 6A
- Ceiling box cc 67-78mm

ASSEMBLY

INSTALLATION

1. Connect the wires.
2. Unfold the hanger hook, if necessary.
3. Fit the attachment plate on the ceiling box with the screws.
4. Replace the cover.

FIG. 1

NOTE:

- If there is no earth ® make suitable arrangement.
- Recessed lamp socket DCL can be installed in recessed box with depth of 40 mm or more.
- A spacer ring must be used (sold separately) for installation in box less than 40 mm in depth.

FIG. 2

FIG. 3

Releasing the casing

Release the casing as shown.

FIG. 4

Disconnection of the conductors

FIG. 5

Documents / Resources

[illegible]

[anslut 007248 Lamp Socket DCL](#) [pdf] Instruction Manual
007248, Lamp Socket DCL, 007248 Lamp Socket DCL

007248, Lamp Socket DCL, 007248 Lamp Socket DCL