

## Ansell

LIGHTING AFIX 3  
Pole Push AFIX  
Connector



# Ansell LIGHTING AFIX 3 Pole Push AFIX Connector Instruction Manual

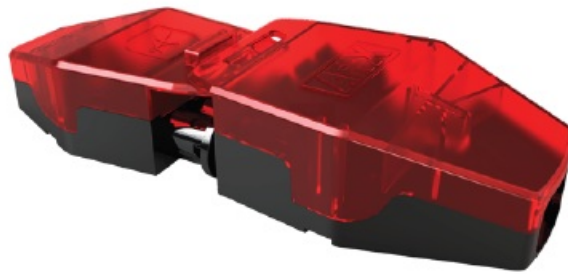
[Home](#) » [Ansell LIGHTING](#) » Ansell LIGHTING AFIX 3 Pole Push AFIX Connector Instruction Manual 

## Contents

- [1 Ansell LIGHTING AFIX 3 Pole Push AFIX Connector](#)
- [2 Product Usage Instructions](#)
- [3 AFIX Connector](#)
- [4 PRODUCT FEATURES](#)
- [5 GENERAL INFORMATION](#)
- [6 TECHNICAL INFORMATION](#)
- [7 DIMENISON](#)
- [8 Frequently Asked Questions](#)
- [9 Documents / Resources](#)
  - [9.1 References](#)
- [10 Related Posts](#)

# Ansell

**Ansell LIGHTING AFIX 3 Pole Push AFIX Connector**



## Product Usage Instructions

1. Ensure the power source is rated at 250V before connecting the AFIX Connector.
2. Select the appropriate color (Black or Red) for your application.
3. Install the AFIX Connector internally with an IP rating of at least IP20.
4. The product comes with a 5-year warranty and is CE marked for quality assurance.
5. The height of the connector is 28 mm, ensure proper clearance during installation.

**Application** Ancillary, Commercial, Education, Healthcare, Hospitality, Industrial, Outdoor  
**Specification** Performance

## AFIX Connector

AFIX 3 Pole Connector  
Code: AFIX/3P/1



## PRODUCT FEATURES

- Plug and play connectors suitable for use with internal luminaires across a range of applications
- Innovative testing port feature allows quick and easy access for fixed wire testing
- Available in both 3 and 4 poles
- Push fit connections and a 2 part click-and-connect design ensure a quick and easy installation
- Cable clamp design provides a safe and secure cable connection

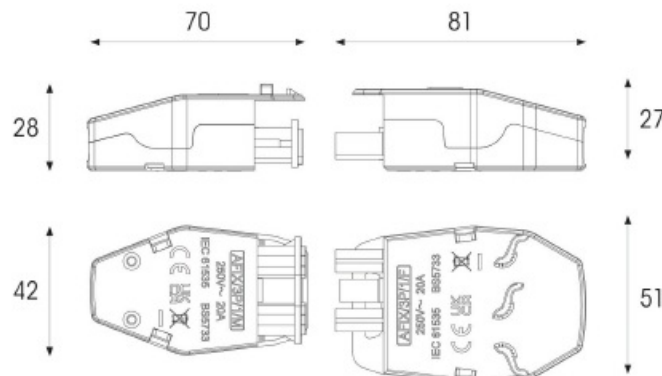
## GENERAL INFORMATION

Input 250V  
Product Weight without Packaging 4.399

## TECHNICAL INFORMATION

- Colour / Finish Black, Red
- IP Rating IP20
- Internal / External Internal
- Warranty (Years) 5
- CE Mark Yes
- Height 28 mm

## DIMENSION



[www.ansell-lighting.com](http://www.ansell-lighting.com)

Belfast: +44 (0) 2890 773750

Warrington: +44 (0) 1942 433333

## Frequently Asked Questions

### 1. What is the input voltage for the AFIX Connector?

The input voltage for the AFIX Connector is 250V.

### 2. Is the AFIX Connector suitable for outdoor use?

No, the AFIX Connector is designed for internal use with an IP rating of IP20.

### 3. Does the AFIX Connector come with a warranty?

Yes, the AFIX Connector comes with a 5-year warranty for added peace of mind.

## Documents / Resources



[Ansell LIGHTING AFIX 3 Pole Push AFIX Connector](#) [pdf] Instruction Manual  
AFIX 3 Pole Push AFIX Connector, AFIX 3, Pole Push AFIX Connector, Push AFIX Connector, A  
FIX Connector

## References

- [User Manual](#)

## **Manuals+. Privacy Policy**

This website is an independent publication and is neither affiliated with nor endorsed by any of the trademark owners. The "Bluetooth®" word mark and logos are registered trademarks owned by Bluetooth SIG, Inc. The "Wi-Fi®" word mark and logos are registered trademarks owned by the Wi-Fi Alliance. Any use of these marks on this website does not imply any affiliation with or endorsement.