



ANRAN Q4Max Solar Powered Wireless Security Camera User Guide

[Home](#) » [ANRAN](#) » ANRAN Q4Max Solar Powered Wireless Security Camera User Guide 



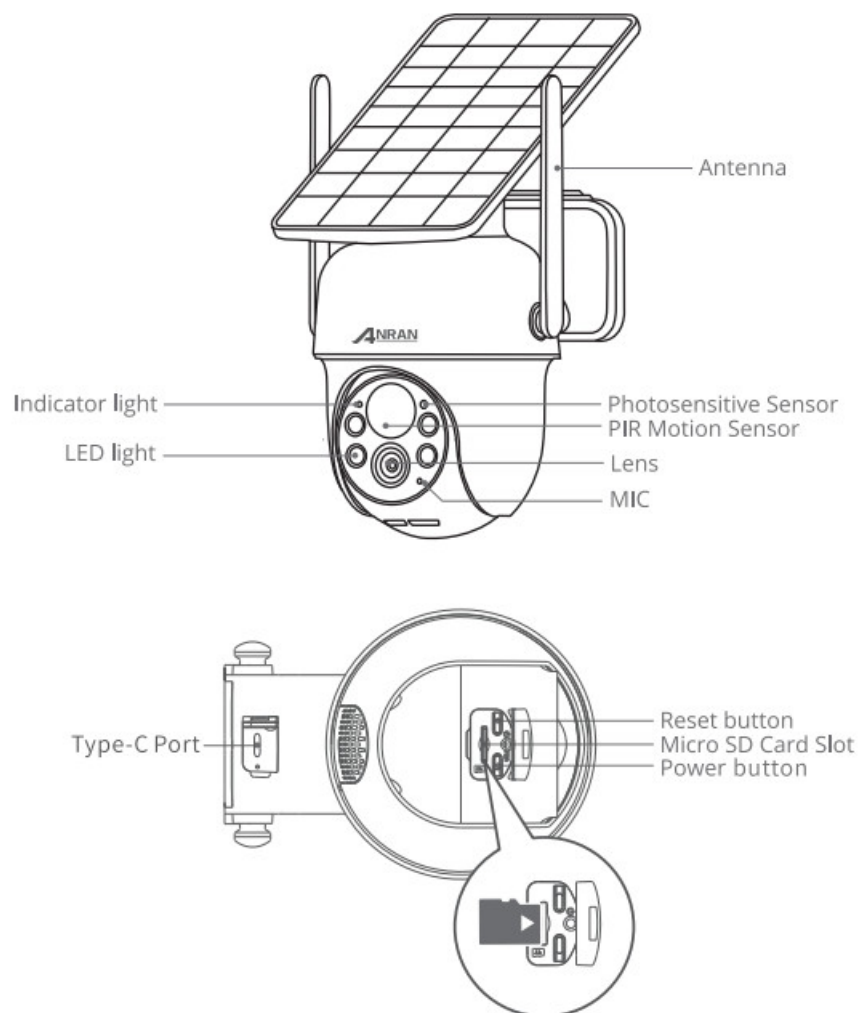
Solar powered
-wireless security camera Q4/Q4Max
Quick Start Guide



Contents

- 1 Product Introduction
- 2 APP Installation and Account Registration
- 3 How to Add Camera to APP
- 4 PIR Motion Detection Settings
- 5 Product Specification
- 6 Installation
- 7 FAQs
- 8 8)
 - 8.1 Warranty Tips
 - 8.2 Documents / Resources
 - 8.2.1 References

Product Introduction



CAUTION: Please insert the Micro SD Card according to the direction shown in the diagram. Micro SD Card might JAM if inserted incorrectly and device could be damaged.

SD Card Port: Support micro SD card for local storage (Max 128GB).

Reset button: Used to restore the camera to factory settings (Press and hold on 5-8s).

Card capacity requirements: 8-128GB.

Read and write speed requirements: class10 level.

File format: FAT32.

APP Installation and Account Registration

2.1 Download“ ANRAN” APP

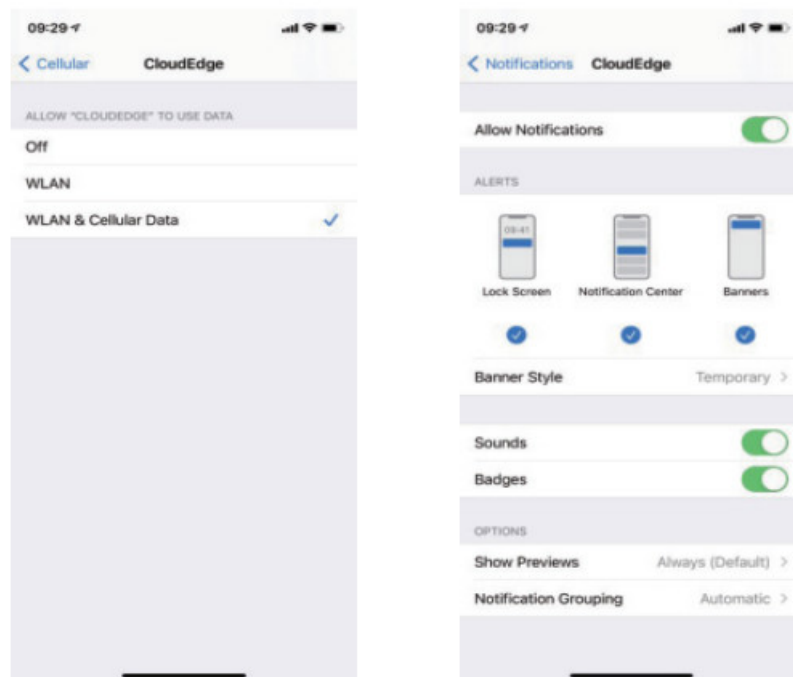
Method 1: Download“ ANRAN”APP from APP Store (iOS) or Play Store (Android) ;

Method 2: Scan“ ANRAN”APP QR code to download it.

	
https://apps.apple.com/us/app/anran/id1611278380	https://play.google.com/store/apps/details?id=com.anran.arcloud&hl=zh-CN

Tips: Please turn on 2 permissions below when use this APP at the first time.

1. Allow“ ANRAN”APP to access mobile cellular data and wireless LAN, or it will be failed to add IP camera.
2. Allow“ ANRAN”APP to receive pushed message, or the cellphone will not receive alarm push when motion detection or audible alarm is triggered.



2.2 Register Account

New users need to register by e-mail, click ‘Register’, and follow the steps to complete the registration of the account, then log in.

Note:

- When registering a new account, please choose the region which you are actually in. (Different registered regions can't share the camera.)
- Please choose to register by e-mail.

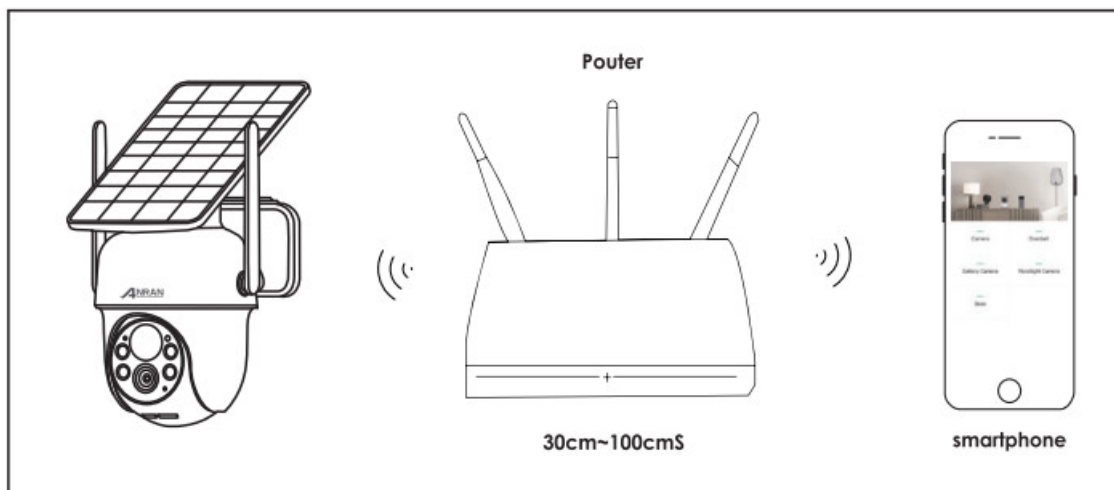
How to Add Camera to APP

Warming Tip: Please insert the Micro SD card before power on, otherwise, the SD card can not be detected.

3.1 Power on Camera

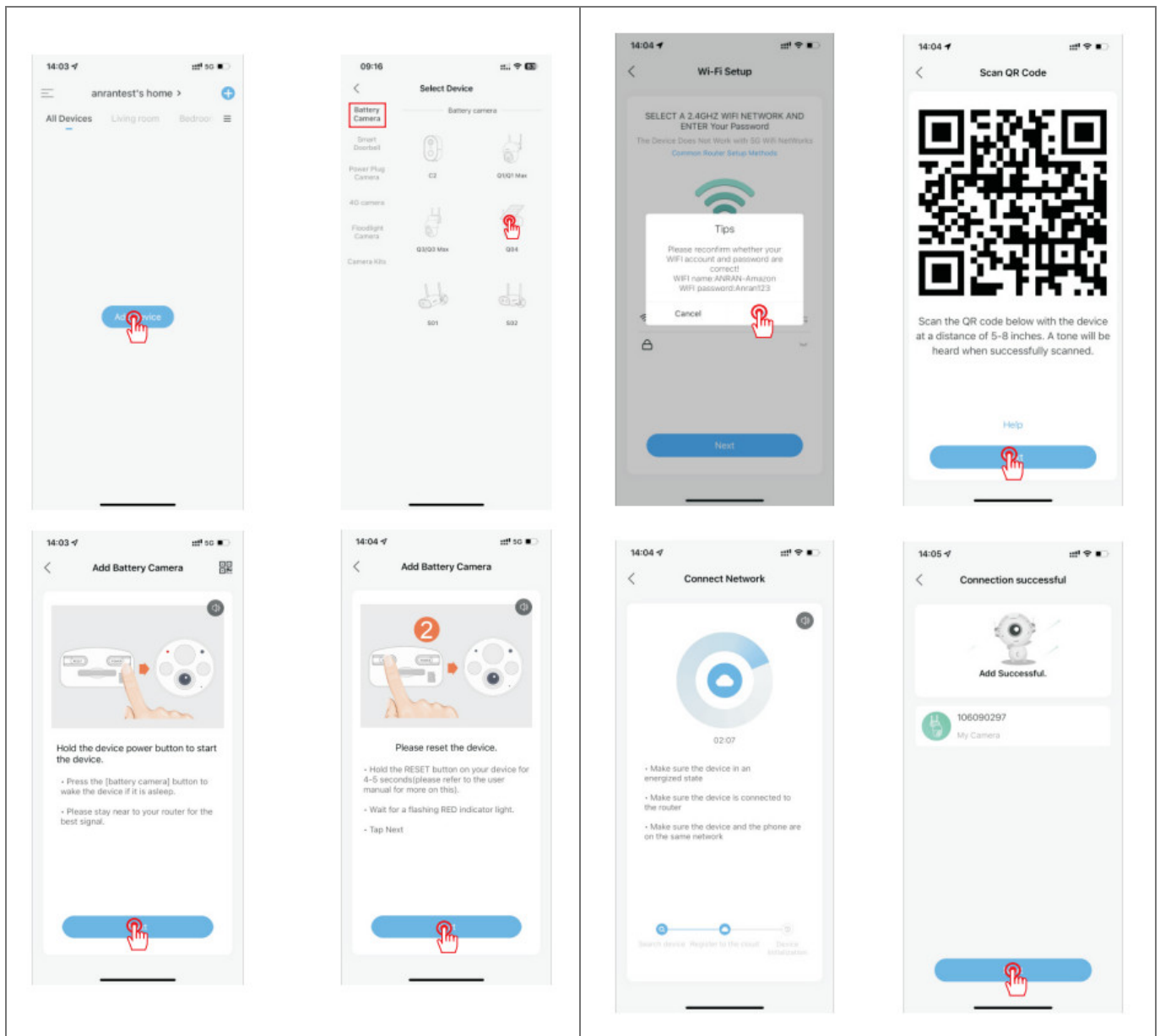
- Please long press the power button for 5s to power the camera.
- The indicator with red light blinking slowly means the camera is started successfully.

3.2 Connect the Camera Put the camera and smart phone | to 3 feet (30 to 100 cm) away from the router to set Wi-Fi.

**Warming Tip:**

- The camera only supports 2.4GHz Wi-Fi, and doesn't support 5GHz WIFI.
- Please ensure that the Wi-Fi signal strength is to be over than 85%; if the camera is far away from the signal source , it won't be connected successfully for the first time.

Wi-Fi Connection Steps:



PIR Motion Detection Settings

Enter the application – “Parameter Setting” – “Motion Detection” interface.

Sensitivity	Detecting Distance (For moving objects)
Level 1-3 (Low)	Up to 4-5 meters
Level 4-7 (Med)	Up to 5-8 meters
Level 8-10 (High)	Up to 8-13 meters

Warm Tips:

- When you encounter the missed or delayed alarm frequently in using this camera, you can adjust the motion detection sensitivity to solve them.
- If you notice the poor performance of motion detection in the night environment, try to turn off “Night Detection”.

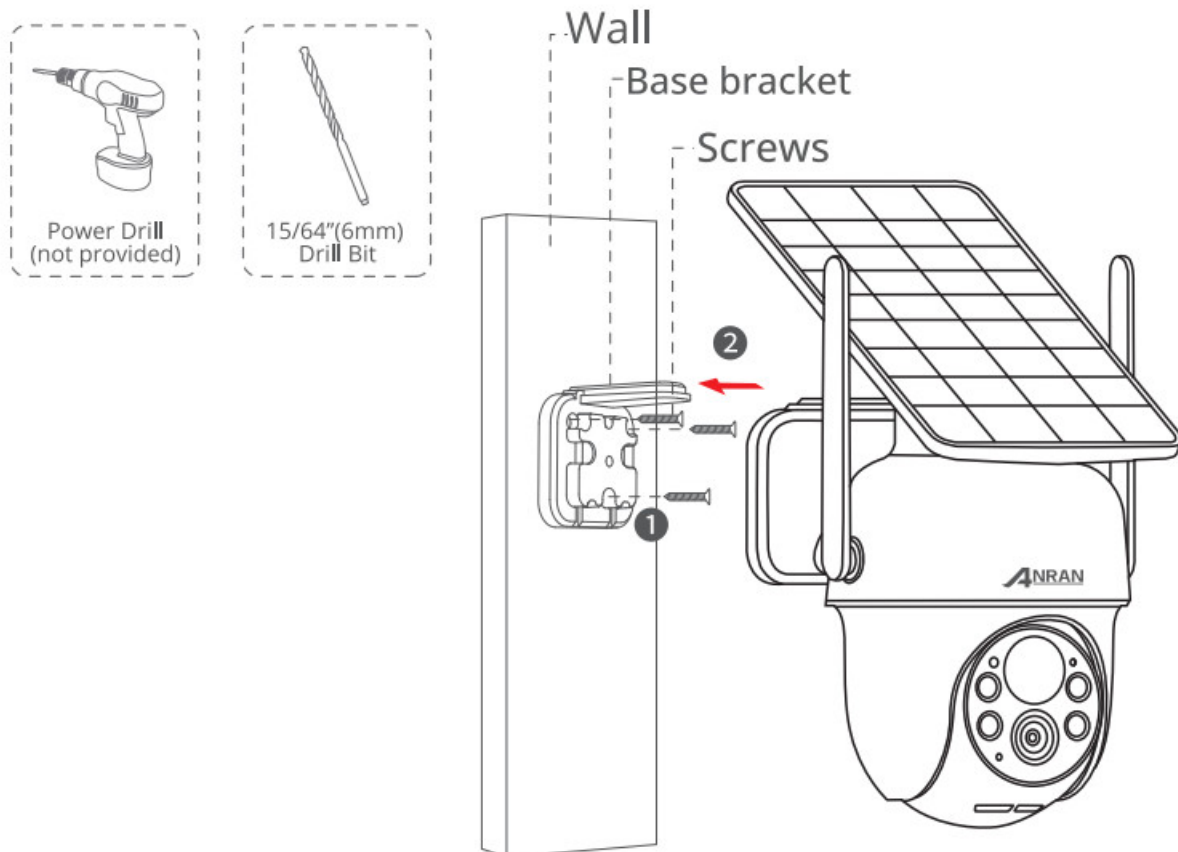
Product Specification

Resolution	3MP/5MP @ 12-15fps
Storage	TF Card (max. 128GB), Cloud Storage
Wi-Fi	Only 2.4GHz
Infrared LEDs	850nm
Waterproof	1P66
OS	IOS (>8); Android (>4.2)
Wi-Fi Standards	IEEE 802.11b/g/n
Power	5V 1A
Working Temp & Humidity	-20°C – 50°C (-4 °F – 122 °F) <90% (no condensation)

Installation

1. Drilling according to position sticker, drill bit: 15/64"(6 mm).
2. Insert the plugs.
3. Tighten the screws.

What is required:



If your camera will be installed in an environment where there is no sunlight or it will be blocked by other objects, you can contact us and we will send you a free solar panel.

FAQs

1) The device prompts offline?

- Check whether the equipment is in the power-on state, and observe whether the working light of the equipment is on normally.
- Check whether the Wi-Fi network is in good condition and restart the router.
- If the device is located far away from the router, which results in the inability to obtain a good Wi-Fi signal, it is recommended to move the router to a closer place or add a Wi-Fi amplifier to improve the Wi-Fi performance of the home.
- Delete the camera from your AN RAN account and add it again after resetting the device.
- Check whether the device firmware and application program are the latest version.

2) Update router or Wi-Fi password?

Delete the camera from your AN RAN account. After resetting the device, use the new Wi-Fi and password to add it again.

3) Can't play historical video?

4) Why doesn't the device identify the SD card ?

Please insert the Micro SD card before power on; • It is recommended to use San Disk, Samsung and other brand cards; • It is recommended to use a standard class 10 TF card; • Only FAT32 format is supported. • TF card can't be identified when the internet environment is not good.

5) Why the battery life of my device is poor?

- Please check whether the number of alarms is too frequent. Because the working time of the device determines the battery life. The more frequent PIR wake-ups, the faster the battery consume due to the longer working time. It is recommended to appropriately lower the motion detection sensitivity of the device and set the alarm interval and alarm time plan. (Note: Outdoor air conditioning units, moving cars and the passing pedestrians will cause frequent alarms. Please adjust the angle of the device to avoid these objects.)
- In cold weather, the battery capacity will be reduced, which will affect the endurance of the device.

6) The phone cannot receive the alarm push?

7) How to judge whether the charging is successful?

The device's charging indicator light is red, which means it is charging. A blue light means that charging is complete. It will take approximately 10 hours or more to fully charge.

8)

- Determine whether the power adapter is good, try another one.
- Determine whether the Type-C charging cable is good, try another one.
- The charging indicator may be defective, please check the charging condition in the phone APP.
- Determine whether the charging port of the device is not in good contact with the Type-C charging cable.
- The device has a low temperature charging protection module, please don't

charge the device at low temperatures.

Warranty Tips

Please fill in the following information or scan QR code to activate the free 12-month warranty from the order date on.

After finish filling or scanning, please take a picture and send it to the email (support@anran-cctv.com).

Then your free warranty will take effect!

During the warranty period, if any parts of product are damaged, please contact us immediately and we will provide satisfactory resolution.

Order Date:.....

Order Number/ID:.....

Buyer E-mail:.....

Buyer Tel:.....

SPANISH



Free Warranty

<https://qrco.de/bcAQFk>

Contact us



www.anran-cctv.com



support@anran-cctv.com



1-866-958-6988 (US)

44-20 8610 1559 (UK)

Documents / Resources

	ANRAN Q4Max Solar Powered Wireless Security Camera [pdf] User Guide Q4Max Solar Powered Wireless Security Camera, Q4Max, Solar Powered Wireless Security Camera, Powered Wireless Security Camera, Wireless Security Camera, Security Camera, Camera
--	---

References

- [User Manual](#)

