



## ANRAN B04 Security Camera User Manual

[Home](#) » [ANRAN](#) » ANRAN B04 Security Camera User Manual 



### Wireless HD camera User Quick Manual

Dear Customer, thank you for choosing Anran products! to have a better operation we suggest you read the User Manual first and keep it for future reference If any questions please contact us by email to our support team for help.

#### Contents

- [1 Introduction](#)
- [2 Download the ARCCTV APP](#)
- [3 Register an account](#)
- [4 Set up WiFi for the camera](#)
- [5 Step6: Enter the device list interface and click the play button to enjoy the camera screen. Device Storage](#)
- [6 Remote Playback](#)
- [7 Functions](#)
- [8 Documents / Resources](#)
- [9 Related Posts](#)

## Introduction



1. Lens
2. Light sensor
3. WiFi antenna
4. Reset
5. SD card Slot
6. Speaker
7. Power port

SD Card Port: Support micro SD card for local storage (Max 128GB).

Reset button: Used to restore the camera to factory settings (Press and hold on 5-8s).

## Download the ARCCTV APP

Download "CCTV" from Google Play /App Store or Scan the following QR Code onto your Mobile Phone.



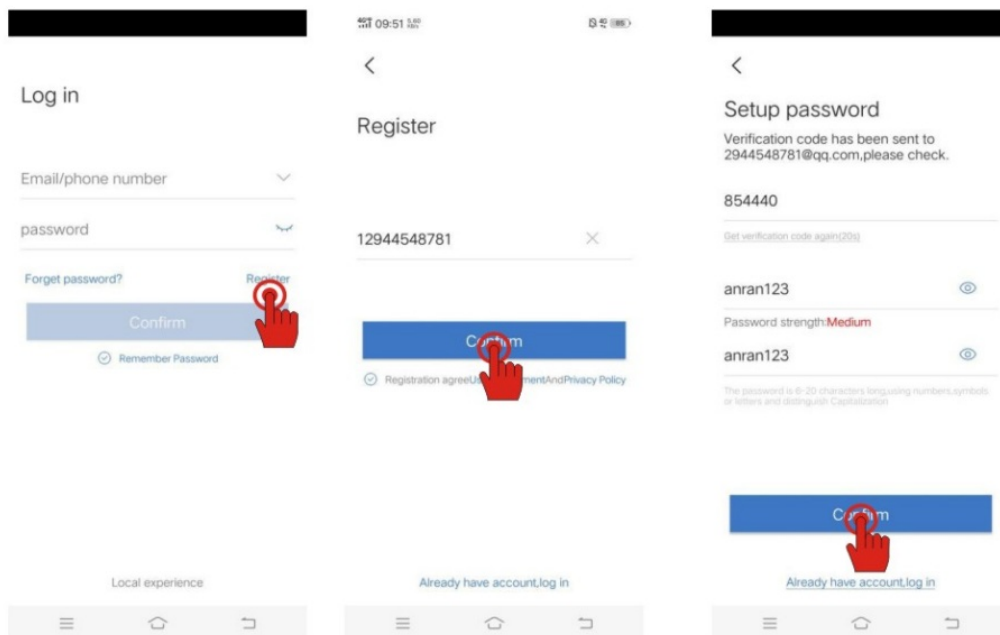
Android

<https://play.google.com/store/apps/details?id=com.generalcomp.arcctv>

<https://itunes>

## Register an account

1. Open the “CCTV” APP to register an account. Go to the login interface then click “Register” (Figure 1)
2. Register with your phone number or email address, click “Confirm”, a verification code will be sent to your phone or email box (Figure 2)
3. Input the verification code and set a password for the app account, click “Confirm” to complete (Figure 3)

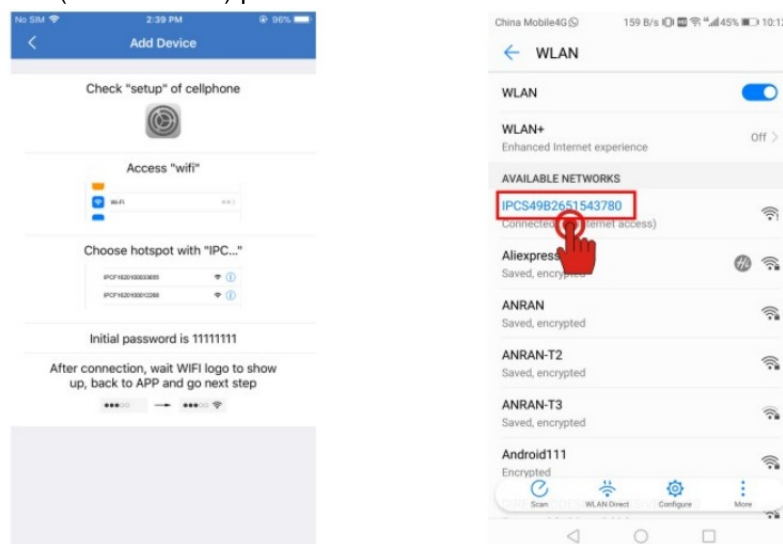


## Set up WiFi for the camera

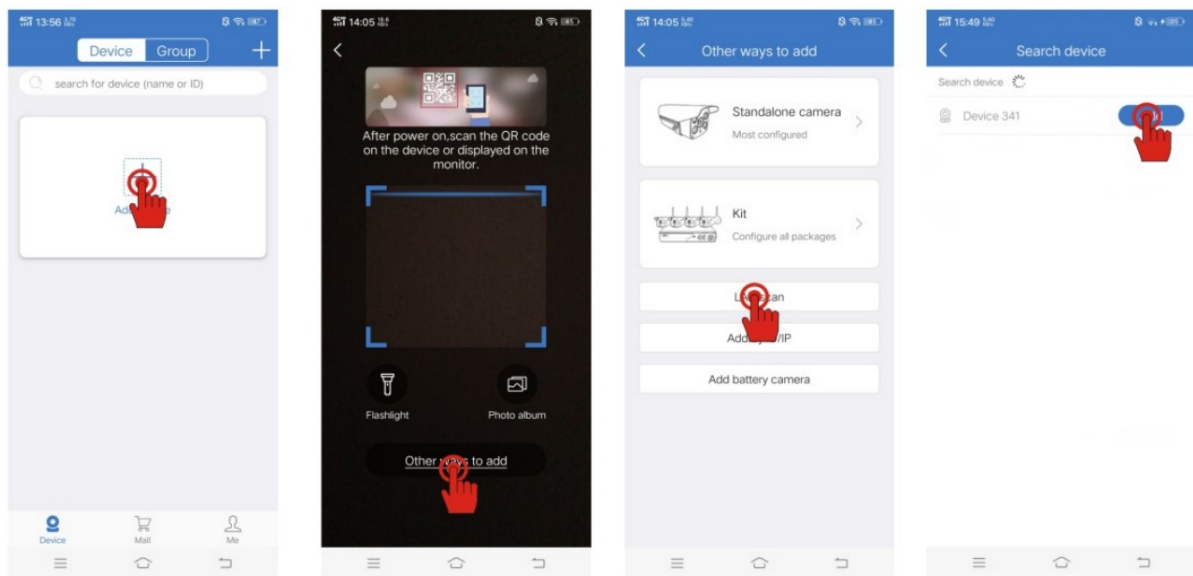
### Configure WiFi in AP mode

**Step 1:** Power on the camera, in about 30 seconds later, you might hear a voice message “Start Configuration mode” and the camera will rotate itself to start. In initial setup, please put the camera next to the router as much as possible, less than 5 meters.

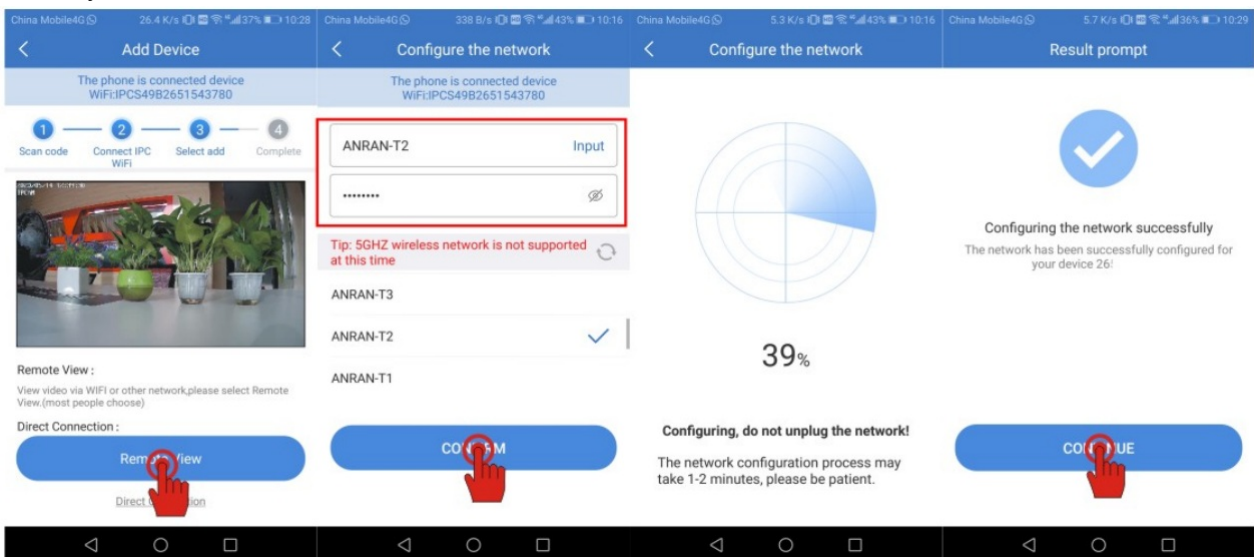
**Step2:** Go to the WLAN setting on your phone, connect with the camera’s hotspot which begins with “IPCS XXXXX”. The camera AP’s (Access Point) password is “11111111”



**Step3:** Login to the “CCTV” APP, click “+” and click “Other ways to add”, then click “LAN scan” to search camera in the same LAN and add the device

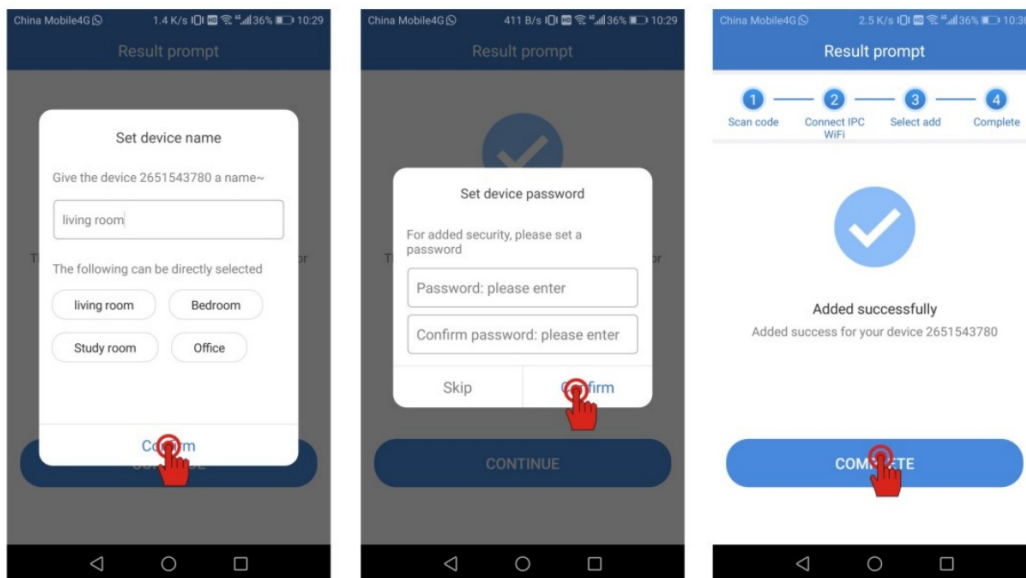


**Step4:** Click “Remote View”, find your home WiFi and input the WiFi password, click “CONFIRM”. Please wait until you hear a voice message “Wireless Connection Successfully”, which means the camera is connected success to your home WiFi

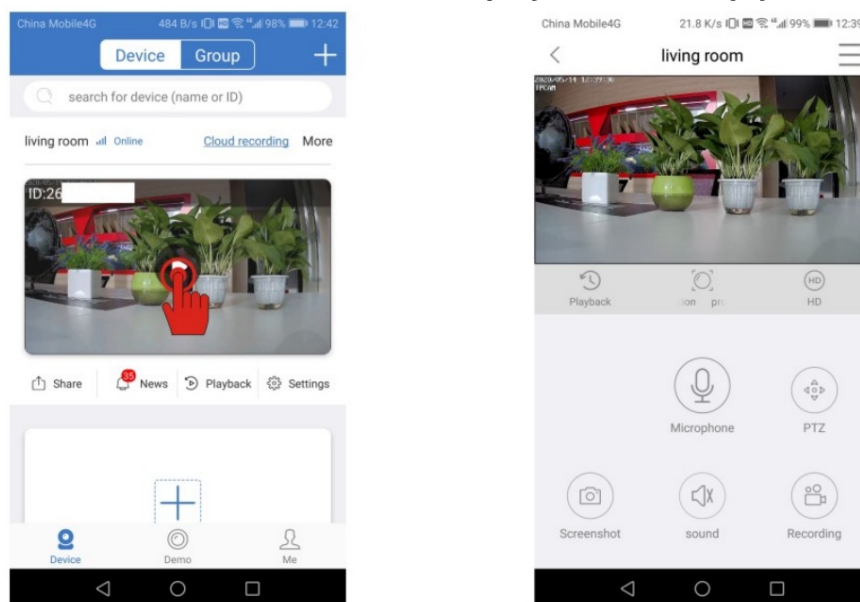


**Step5:** Name the device and set a password to complete the setup.

**Tip:** The camera password should be 6 to 10 digits, no special characters

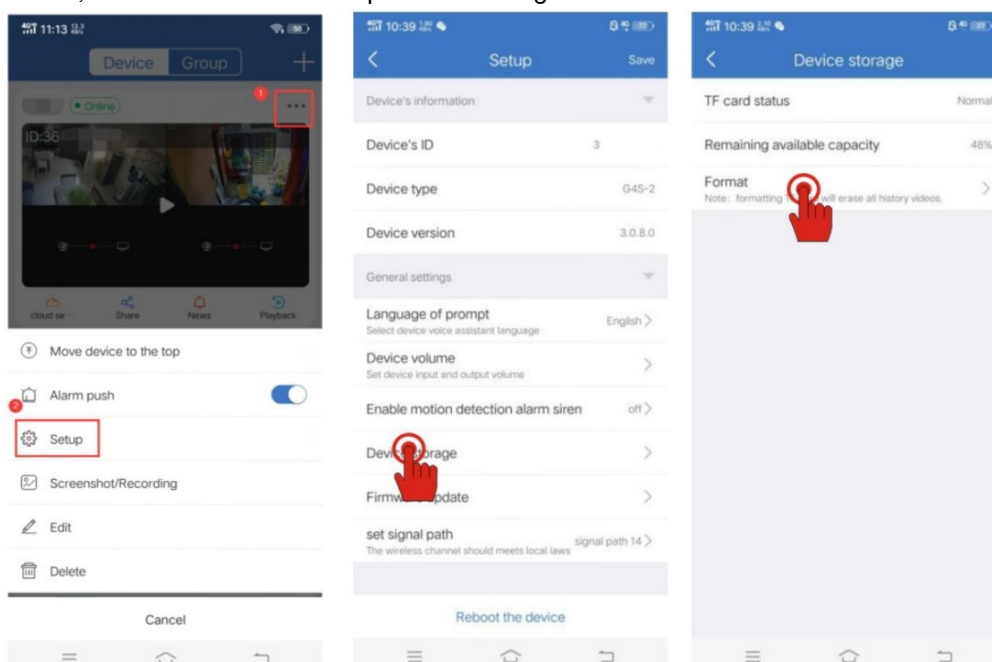


**Step6: Enter the device list interface and click the play button to enjoy the camera screen.**



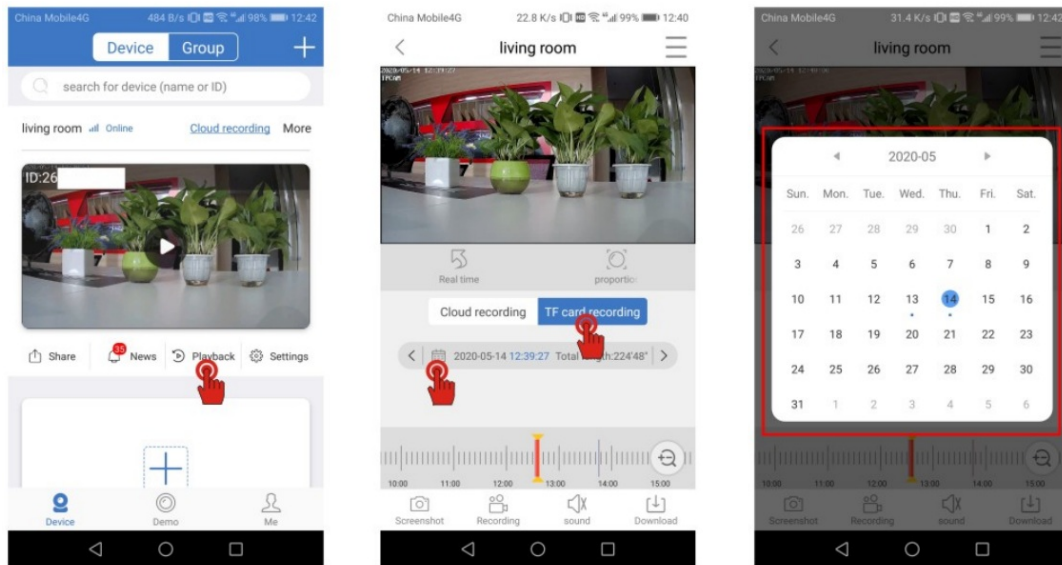
## Device Storage

The NVR camera supports up to 128GB Micro TF card. Please format the card after inserted. When the card is full, it will overwrite and loop the recording.



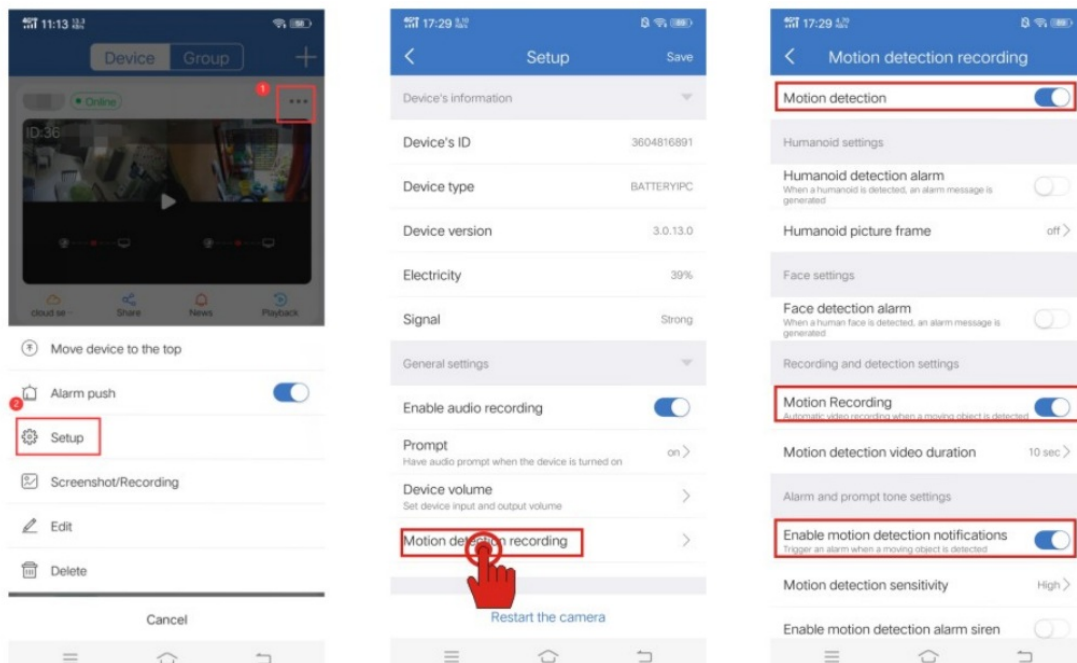
## Remote Playback

1. Click the “Playback” button to enter the playback interface;
2. Select “TF card recording”, drag the timeline to select the time period;
3. Click “:2” to select the date.



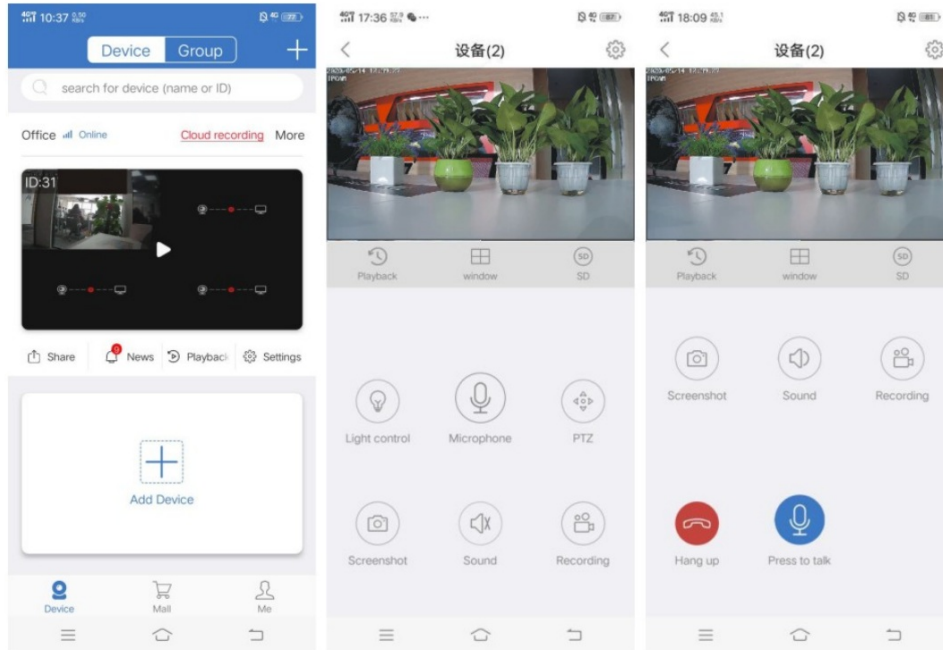
## Motion detection alarm

With the function on, the App will push an alarm message to you when a motion is triggered. Click “Settings” and choose “Motion Detection recording”, turn on the “Motion detection”, “Motion Recording” and “Enable motion detection notifications”





## Functions



News: Tap to view alarm messages. Please go to Me > Settings to turn on the Push Notification.



Playback: Tap to view the videos recorded.



Window: Change the number of channels displayed on the screen.

**SD:** Switch the image quality between SD and HD. SD is the default setting and is recommended for smooth streaming.



Light control: Adjust the infrared lights mode of cameras.



Microphone: Can press and hold Microphone to start the intercom.



PTZ: Can Pan and Zoom the cameras come with this system.



Screenshot: Tap to capture a screenshot to the App. Please go to the Main interface > Screenshot to check.



Sound: Turn on/off the sound from the camera.



Recording: Tap to start recording the live video; tap again to end and save it into the App.



Intercom: Tap to start talking with people near the NVR. Press and hold  the icon to talk; press the icon to



hang up.(Note: If this feature can't work, the cameras you ordered don't have this feature)

Thanks again, if there are any issues, please don't hesitate to contact us by sending an email to our support team so we can do our best to resolve it

This device complies with part 15 of the FCC Rules. Operation is subject to the following two conditions: (1) This device may not cause harmful interference, and (2) this device must accept any interference received, including interference that may cause undesired operation.

Any changes or modifications not expressly approved by the party responsible for compliance could void the user's authority to operate the equipment.

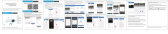
**Note:** This equipment has been tested and found to comply with the limits for a Class B digital device, pursuant to part 15 of the FCC Rules. These limits are designed to provide reasonable protection against harmful interference in a residential installation. This equipment generates uses and can radiate radio frequency energy and, if not installed and used in accordance with the instructions, may cause harmful interference to radio communications.

However, there is no guarantee that interference will not occur in a particular installation. If this equipment does cause harmful interference to radio or television reception, which can be determined by turning the equipment off and on, the user is encouraged to try to correct the interference by one or more of the following measures:

- Reorient or relocate the receiving antenna.
- Increase the separation between the equipment and receiver.
- Connect the equipment into an outlet on a circuit different from that to which the receiver is connected.
- Consult the dealer or an experienced radio/TV technician for help.

This equipment complies with FCC radiation exposure limits set forth for an uncontrolled environment. This equipment should be installed and operated with minimum distance of 20cm between the radiator & your body

## Documents / Resources

	<a href="#">ANRAN B04 Security Camera</a> [pdf] User Manual B04, 2AZUX-B04, 2AZUXB04, B04 Security Camera, B04, Security Camera
-----------------------------------------------------------------------------------	------------------------------------------------------------------------------------------------------------------------------------