

ANPVIZ Smart WIFI PTZ Camera User Manual

[Home](#) » [ANPVIZ](#) » ANPVIZ Smart WIFI PTZ Camera User Manual 



Contents

- [1 ANPVIZ Smart WIFI PTZ Camera User Manual](#)
- [2 Product Introduction](#)
- [3 PRODUCT INTRODUCTION](#)
- [4 Add camera to mobile phone app](#)
- [5 Install Micro SD Card and Record Settings](#)
- [6 Set alarm push and alarm recording](#)
- [7 Record playback](#)
- [8 Watch on Computer](#)
- [9 Web access](#)
- [10 HiP2P Client™ multi-channel management client](#)
- [11 FAQ](#)
- [12 Documents / Resources](#)
 - [12.1 References](#)

ANPVIZ Smart WIFI PTZ Camera User Manual

ANPVIZ Smart WIFI PTZ Camera.webp



<https://youtu.be/sodyETBVxVE>



<https://youtu.be/pXf8wY7T7Tg>

iPhone and Android configuration Wifi network demo video

Thank you for purchasing Anpviz Wireless Network Security Camera.

This manual applies to the PTZ / Bullet/Dome IP Cameras. Please download the correct PC software from the following link:

<https://www.anpvizsecurity.com/download/Camhipro-Series-SC01>

Scan and click the QR code below to watch the hotspot distribution network and wired distribution network operation video:

1. General Introduction

The Anpviz camhi series security cameras consists of various indoor and outdoor cameras with different shapes and functions. Users can monitor multiple security cameras on the same device.

Anpviz camhi series security cameras support Android and iOS smartphones as well as tablets, Windows PC and Mac. All security cameras are equipped with LAN ports and support wired connections.

2. Setting up the security camera

The security camera starts operating immediately after the power is switched on. We recommend you connect the security camera to your mobile device or PC; in that case, you can access the security camera more easily.

There are 3 ways to add and manage the camera: using the mobile phone APP, PC software or the PC browser.

Product Introduction

This is a network camera for security surveillance, It is connected to the Internet through network cable or Wi-Fi for data transmission and reception, you can use it to remotely watch real- time images on mobile phone and computer anytime anywhere, it can save video in the Micro SD card or computer, you can set motion detection and humanoid detection alarm on the camera, when the alarm is triggered, the camera can send email, push phone message, and make alarm sound, and other more functions.

Product List

NO.	Name	QTY
1	IP Camera	1 PCS
2	12V Power Adapter	1 PCS
3	Quick Start Guide	1 PCS
4	Installation Accessories	1 PCS
5	Network cable (Some models include)	1 PCS

Product Precautions

The proper environment temperature for this camera range from -20°C to 50°C, Please avoid exposing it to too much hotter or colder environment.

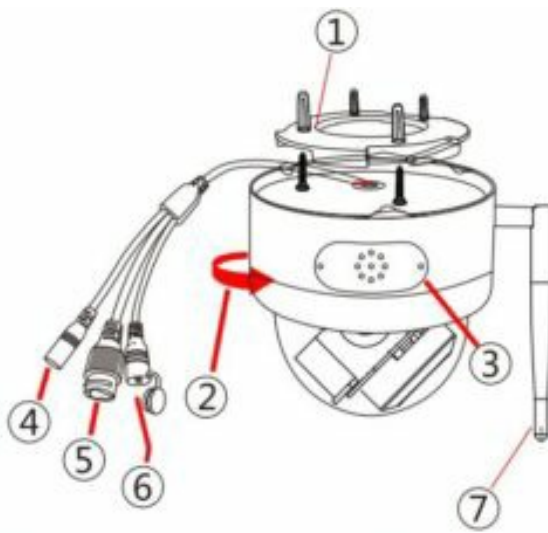
When installing the camera, please protect the camera's interface cable and power supply, please make sure they cannot be short-circuited or be lengthened.

For better user experience, please keep the front and both sides of the camera lens away from objects reflective as glass, white wall etc, so that the picture function well without overexposure.

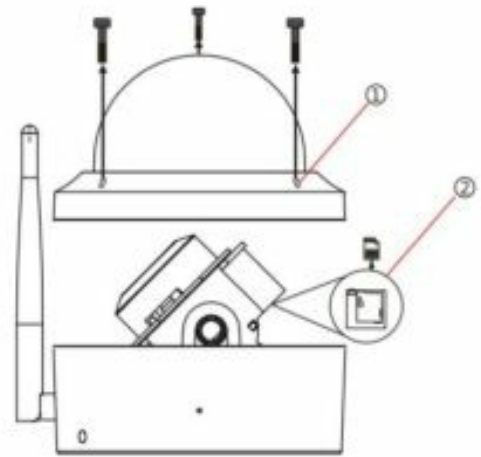
Make sure the camera has been placed in areas of good signal of the Wi-Fi, set it up away from somewhere might jamming signal as metal or microwave oven.

If it is a P TZ rotation type camera, do not twist the camera to force it to rotate, if you need to adjust the monitoring orientation, you can adjust it through the PT function of the mobile APP or computer.

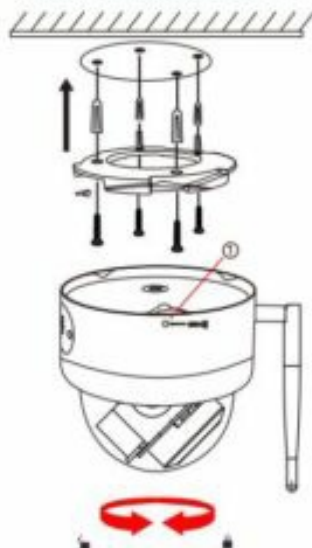
PRODUCT INTRODUCTION



- ❶ Install the quick assembly block according to the hole position
- ❷ Align the bottom of the camera and rotate it to the right
- ❸ Speaker
- ❹ DC 12V Power Port
- ❺ LAN Port
- ❻ Reset Button
- ❼ WIFI Antenna

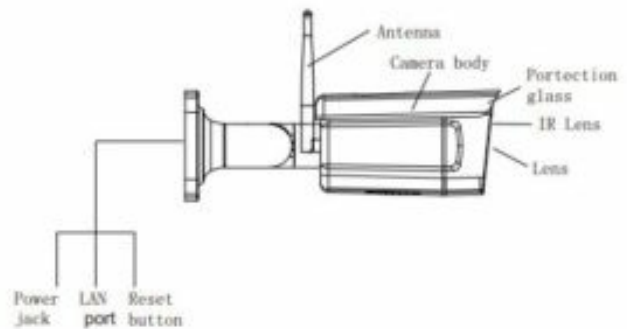


- ❶ Unscrew the screw to open the camera mask
- ❷ Find the SD card slot and insert the SD card
- ❸ If the purchased camera already has an SD card installed, there is no need to disassemble the camera to install it.

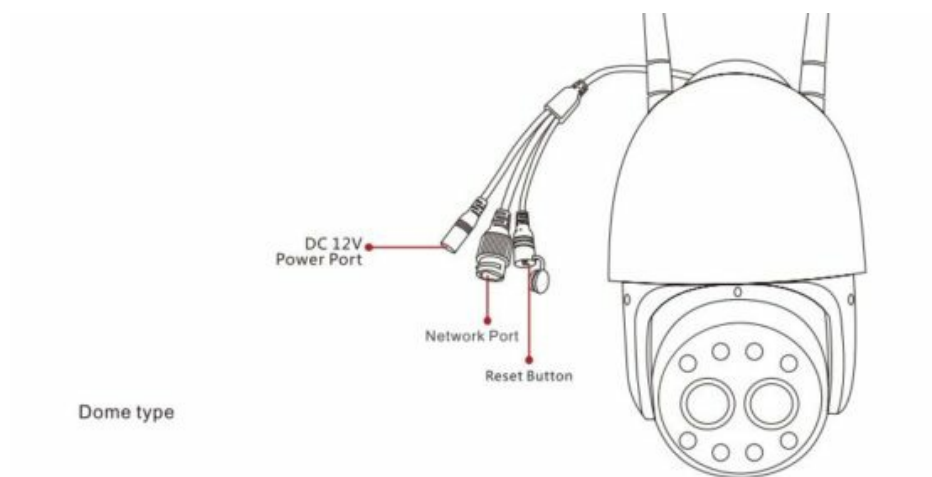
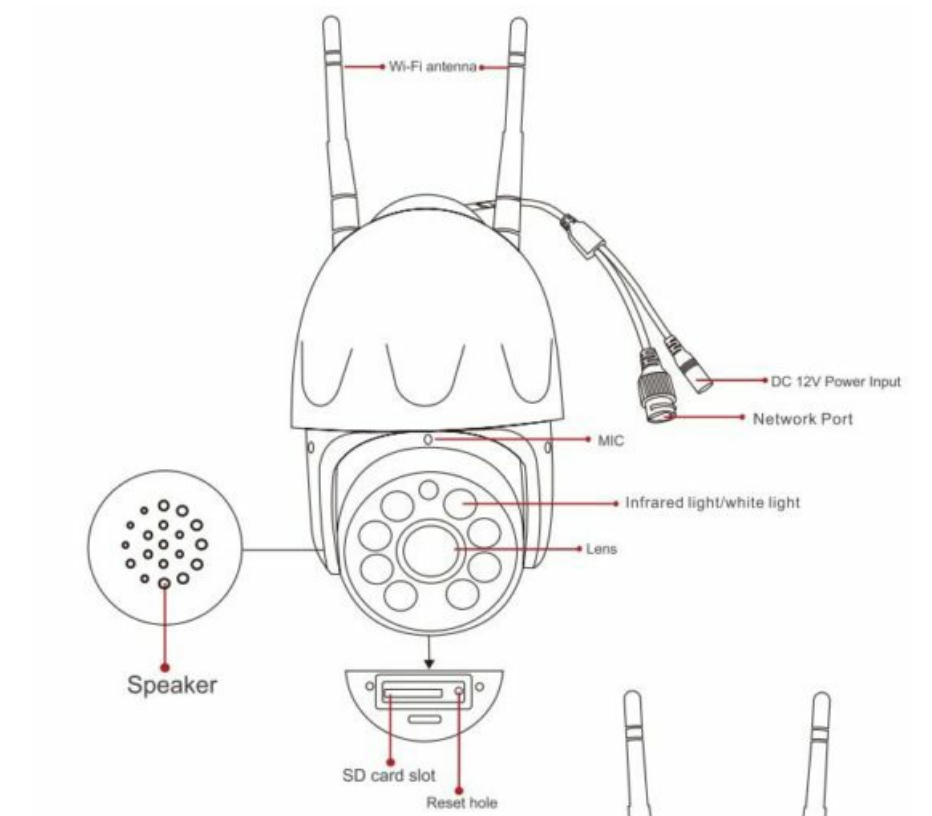


- ❶ Install it quickly and tighten the screws to fix the camera.

Dome type



Bullet type



Dome type

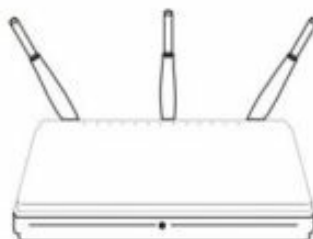
Note: Please refer to the actual product received.

Add camera to mobile phone app

Power on



Plug Power



Router



Smartphone

1.1 Download App

Download “CamHiPro” or “Cam Hi” from Google Play Store/ Apple App Store or scan the QR code below to get APP information.



CamHipro Android app



CamHipro IOS app

1.2 Add camera to App

1 .2.1 Method 1: Configure network via hotspotConnect the camera to the power supply and place the camera near the mobile device and router.Connect the iPhone to the camera's wifi hotspot



Find hotspot of the camera "IPCAM-XXXX"



The hotspot password of the camera is "01234567"



Connected hotspot successfull

Open the APP “CamHiPro” and follow the steps below:



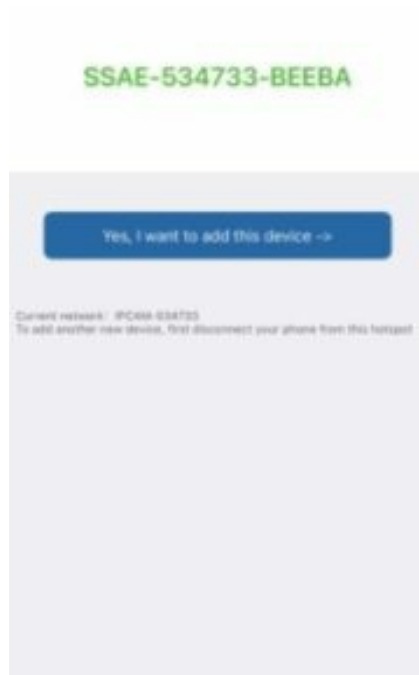
Click "Add Camera"



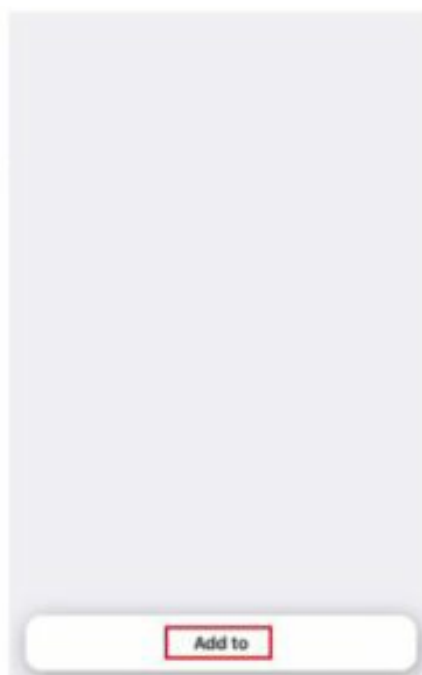
Click "IP camera"



Click "New device"



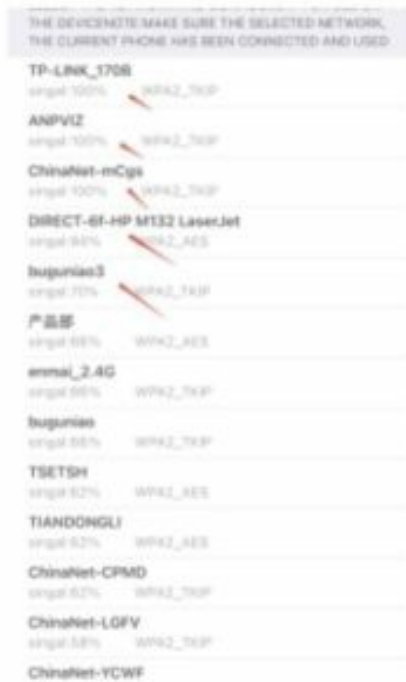
Click "Yes, I want to add this device"



Click "Add to"



Choose your Wi-Fi and enter the password, then click "Configure wireless and add devices"



In camera's wireless list, your Wi-Fi signal value should be greater than 70%



Name the camera and click "confirm"



Camera is added, click the online camera to view

Note When the Wi-Fi connection is successful, you will hear the sound "ding ..." from camera, if not, please check your Wi-Fi password and reconfigure.

Android phone:

Open the "CamHipro" app, click add icon "+", and follow the steps prompted by the app, follow the steps below:



Click "Add Camera"



Click "IP camera"



Click "New device"



Power on the device and wait for about 30 seconds to confirm that the device is working.

Power is on, next step



If the device has a network port, it is recommended to add a network cable to add; the network port light on the network cable socket flashes

Connected network cable

Not connected to the network cable



Go add

AP distribution network equipment



Go add

If you cannot determine by shape, please refer to the manual to make a choice.

Click "power on"



Click "Not network cable"



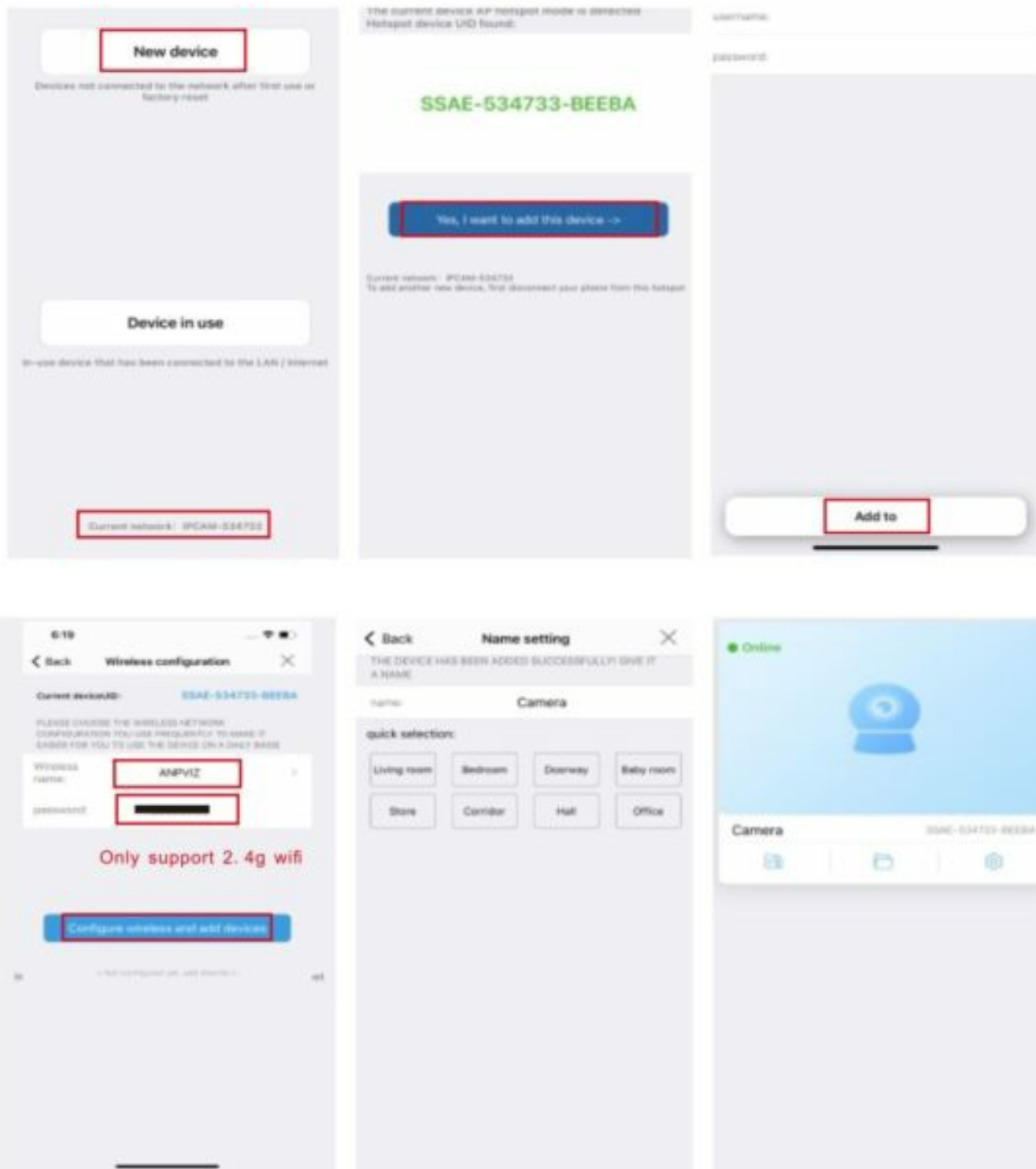
Click "Go add"



Go to the WLAN settings of the mobile device and find the network called "IPCAM-XXXXXX" (the camera's network) in the WiFi list. Enter the password "01234567" to connect. Your mobile device will be connected to the camera's network.

Note: After successfully connecting to the hotspot of the camera, the Android phone may indicate that the network cannot be connected to the Internet. If you want to continue connecting, please click Always connect to this camera hotspot network.

Return to the camhipro interface and follow the steps



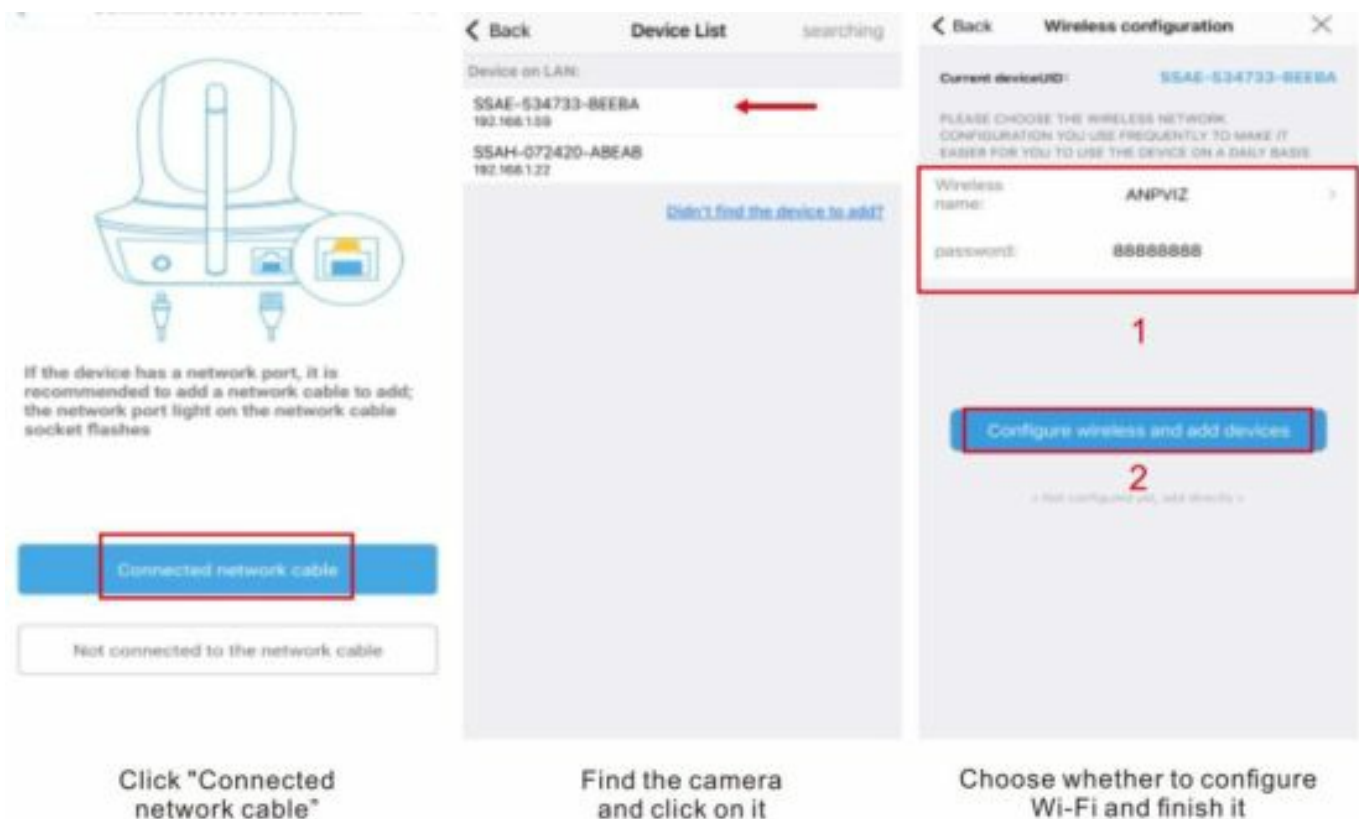
Choose your Wi-Fi and enter the password, then click “Configure wireless and add devices”, camera Configure wireless and added successfully.

Method 2: Connect camera with network cable

Connect the power and network cable to the camera, make sure the network cable is connected to your router and can connect to the Internet through the router, and your phone is also connected to the router's Wi-Fi.



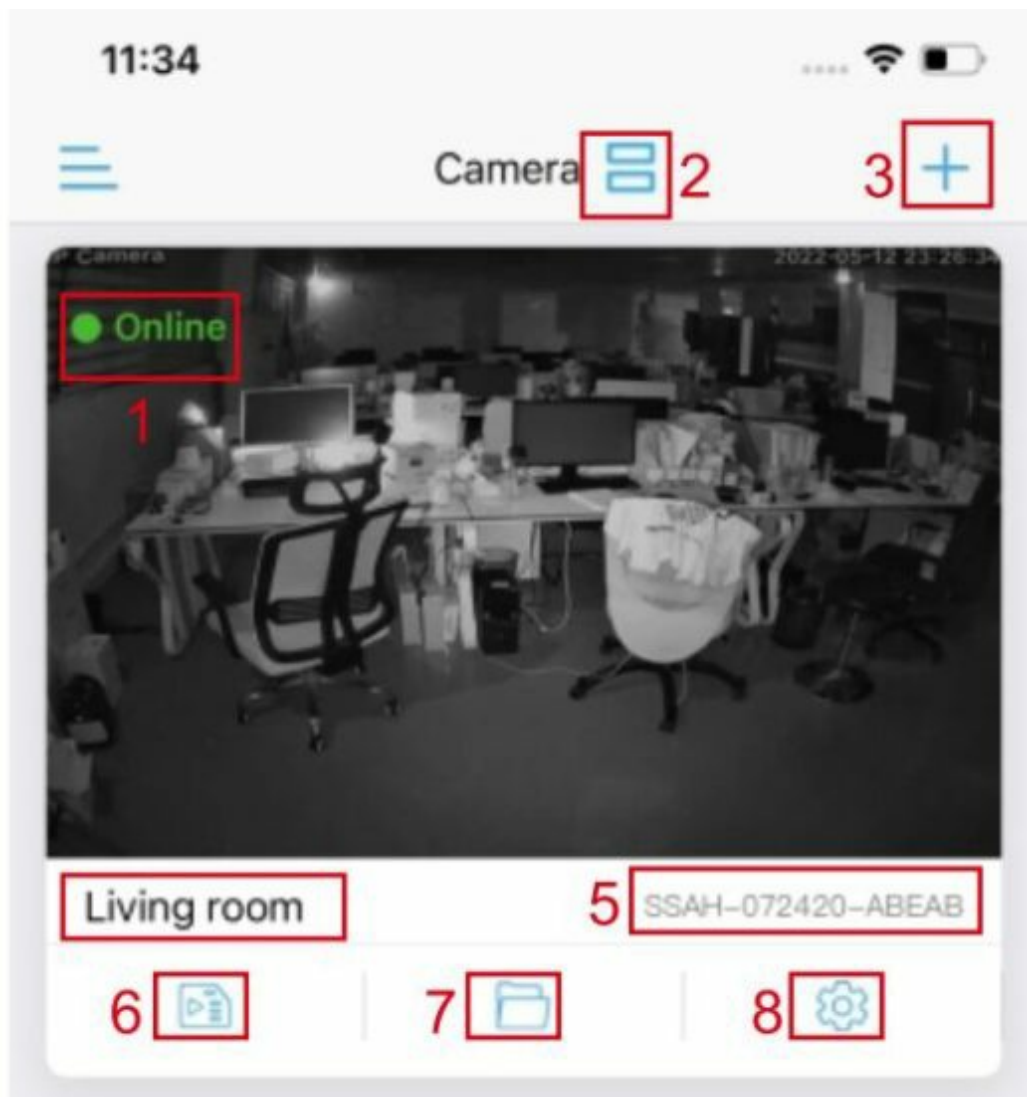
Open the APP and click “Add Camera”-“IP camera”-“New device””Power is on, next step” until “Confirm access network cable” page, then follow the steps below:



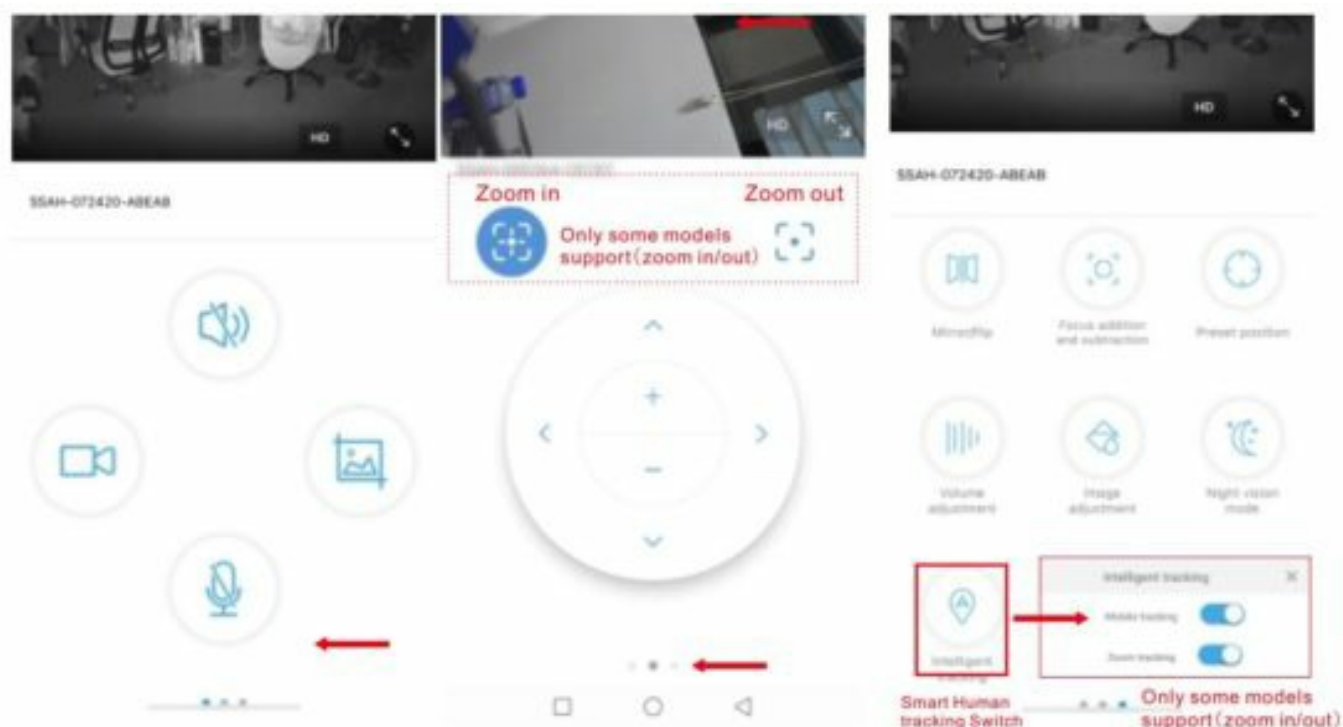
If you want to use a network cable to connect to the camera, please click “Not configured yet, add directly” and continue. Then follow the steps of the app to add the camera

If you want to change to Wi-Fi connect, please choose “Configure wireless and add devices” and continue, when the configure is finished, you need to unplug the network cable to activate Wi-Fi connect.

1. JAPP Preview and function introduction



1. Camera network status
2. Display Mode
3. Add
4. name
5. Camera UID
6. SD card video playback and backup
7. Local video files and pictures
8. Camera Setting Click the online camera picture to view



The function that corresponds to the APP icon.

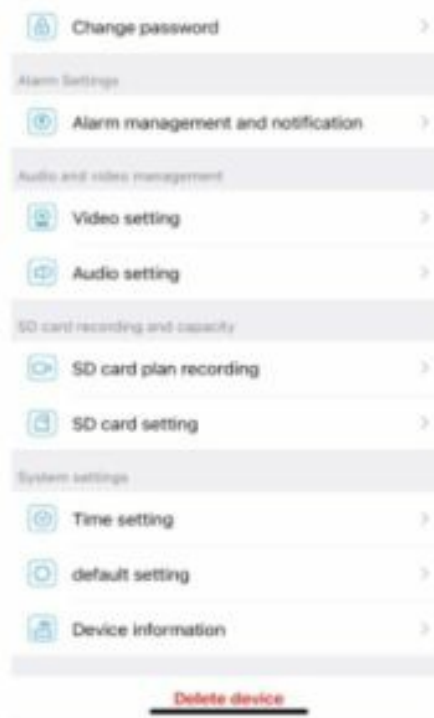
	Speaker		Microphone
	Screenshot		Local video
	Mirror/Flip		Zoom/Focus
	Preset		Volume
	Image adjustment		Night vision mode
	Full screen		Resolution switch
	Return		Settings
	Display mode		Toolbar

Install Micro SD Card and Record Settings

Install the SD card to the camera, and check the status of the SD card.



Click "Setting" icon button

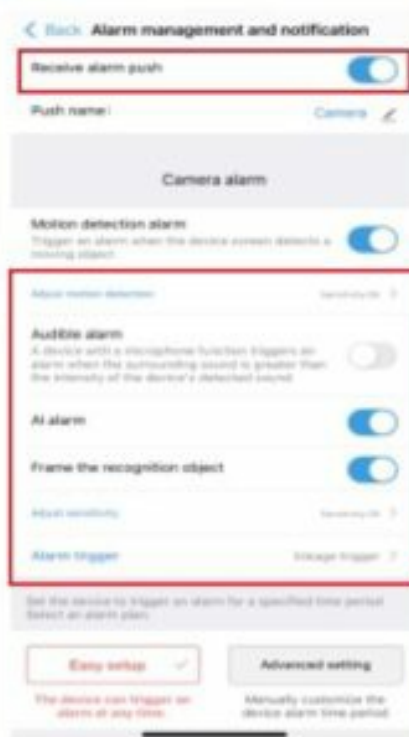


Click "SD card



Please format the SD card before using it for the first time

Set alarm push and alarm recording



Record playback



Click "Playback" icon button



Click the video file to play or download



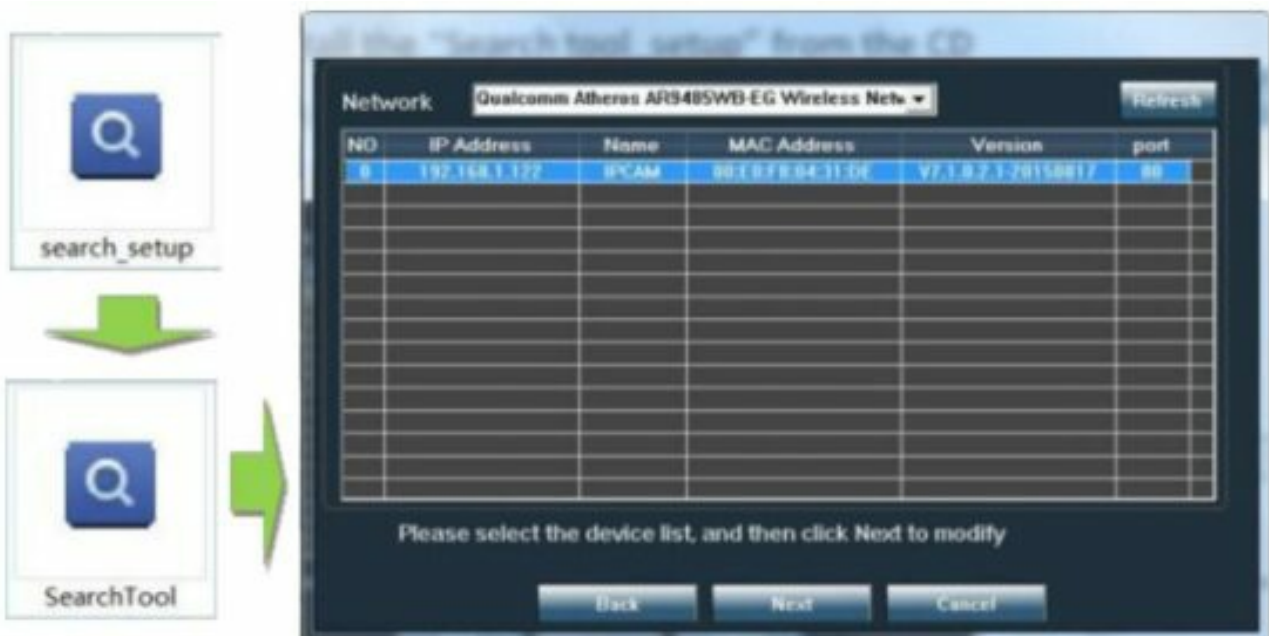
You can choose the time playback mode

Please read instructions in the product information for more operation

Watch on Computer

"Search tool"

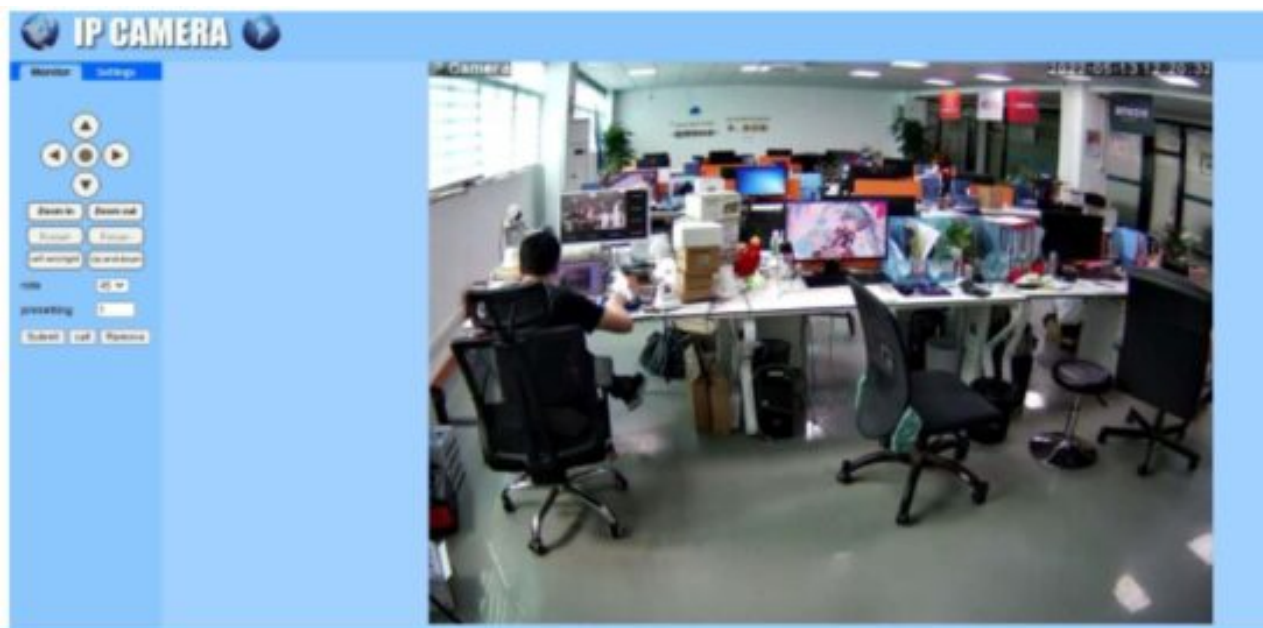
Install the "Search tool" from CamHi IP camera product information you can download it at https://anpvizsecurity.com/download/u-easy-amhi-series_c0096.



The search tool can help you find camera in the LAN and modify the IP address of the camera if it does not match your network.

Web access

Double-click the camera in the search tool to open the browser to visit the camera.



In the browser you can configure all parameters of the camera, if you do not use IE browser, some settings cannot be configured.

HiP2P Client” multi-channel management client

Install the “HiP2P Client” client, you can find installation file and instructions in CamHi IP camera product information.



Run the client, the administrator password is empty by default, enter the “Config” page, click “Search” to find the cameras in the LAN and add them, or click “Input UID” to add the other remote cameras, you can find the camera’s UID serial number on the label.



After adding the camera, double-click the camera to watch the live video.



In the client, you can manage multiple cameras and watch up to 32 channel live videos at the same time, you can save the video on the computer, you can playback the local video (computer) and remote video (SD card), you can configure parameters of camera etc., please read instructions for more operations.

FAQ

1. Q: forget password?

A: If you forget the password, please reset the camera through the reset button of the camera, press and hold the reset button of the camera for about 15—20s, hear the sound of dong from the camera, then release the button and wait for the camera to reset successfully.

2. Q: Wi-Fi configuration failed?

A: Check whether the Wi-Fi signal is sufficient, the Wi-Fi name and password are correct, the Wi-Fi name and password must be in English characters, the Wi-Fi password length cannot exceed 31 characters.

3.Q: The device list is prompted the camera is offline?

A: Please make sure your phone can be connected to the Internet, the camera's wired/Wi-Fi connection is correct and can be connected to the Internet, If the camera is connected Wi-Fi, whether the Wi-Fi signal of the camera installation location is sufficient, check whether the Wi-Fi name or password has been changed.

4.Q: Live video is very stuck, even the camera shows offline?

A: Please make sure that the internet connection of the phone and the camera is good, stable and at least 2Mbps, if the camera is connected Wi-Fi, make sure that the signal at the installation location is sufficient.

5. Q: What should I do if the mobile APP does not receive the push?


A: Please check if the alarm push is turned on and the alarm settings are correct (Setting - Alarm management and notification), whether the APP allows push permission on the mobile phone.

6.Q: When playback video can not find video files?

A: Please check whether the SD card is installed in the camera, whether the SD card is damaged, and whether the time zone of the camera is correct

Thank you for choosing Anpviz security camera! If you have any questions about our products and service, Please do not hesitate to contact us :

 : www.anpvizsecurity.com

 : support@anpvizsecurity.com
sales@AnpvizSecurity.com

 : [@AnpvizTech](https://www.facebook.com/AnpvizTech)


 : [Anpvizsupport](https://www.skype.com/Anpvizsupport)



Made in China

Read More About This Manual & Download PDF:

Documents / Resources

 Smart WIFI PTZ Camera <small>Easy Installation, Operation, User Manual</small> <small>English Version of the user manual</small>	ANPVIZ Smart WIFI PTZ Camera [pdf] User Manual Smart WIFI PTZ Camera, Smart, WIFI PTZ Camera, PTZ Camera, Camera
---	---

References

-  [Symantec Enterprise Blogs](#)
-  [Anpviz Security | IP Security Camera Manufacturer & Supplier Found In 2014](#)
-  [Anpviz Security | IP Security Camera Manufacturer & Supplier Found In 2014](#)
-  [Anpviz Security | IP Security Camera Manufacturer & Supplier Found In 2014](#)
-  [Anpviz Security | IP Security Camera Manufacturer & Supplier Found In 2014](#)