



anova GC900 Generator User Manual

[Home](#) » [ANOVA](#) » anova GC900 Generator User Manual

Contents [[hide](#)]

- [1 anova GC900 Generator](#)
- [2 Important safety rules](#)
- [3 Technical data](#)
- [4 Instructions for use](#)
 - [4.1 Range of application](#)
 - [4.2 Stop the engine](#)
 - [4.3 Connection](#)
- [5 Maintenance and storage](#)
- [6 Troubleshooting](#)
- [7 Environment](#)
- [8 Documents / Resources](#)
 - [8.1 References](#)
- [9 Related Posts](#)



anova GC900 Generator



ANOVA thanks you for choosing one of our products and guarantees the assistance and cooperation that has always distinguished our brand over time. This machine is designed to last for many years and to be very useful if used in accordance with the instructions contained in the user manual. We, therefore, recommend that you read this instruction manual carefully and follow all our recommendations.

For more information or questions, you can contact us through our web support such as www.anova.es or www.millasur.com.

INFORMATION ABOUT THIS MANUAL

Please pay attention to the information provided in this manual and on the appliance for your safety and that of others.

- This manual contains instructions for use and maintenance.
- Take this manual with you when you go to work with the machine.
- Contents are correct at time of printing.
- The rights to make alterations are reserved at any time without affecting our legal responsibilities.
- This manual is considered an integral part of the product and should remain with it in the event of loan or resale.
- Ask your dealer for a new manual in case of loss or damage.

READ THIS MANUAL CAREFULLY BEFORE USING THE MACHINE

To ensure that your machine provides the best results, please read the usage and safety guidelines carefully before using it.

OTHER WARNINGS:

Incorrect use could cause damage to the machine or other objects.

Adapting the machine to new technical requirements could cause differences between the content of this manual and the product purchased. Read and follow all instructions in this manual. Failure to follow these instructions could result in personal injury.

Important safety rules

WARNING

Please read this manual carefully.

Serious injury or death can result if the safety instructions are not followed.

Hazard Signal Word Definitions

- This is the safety alert symbol. It is used to alert you to potential personal injury hazards. Obey all safety messages that follow this symbol to avoid possible injury or death.
- **DANGER** – Indicates an imminently hazardous situation which, if not avoided, will result in death or serious injury.
- **WARNING:** indicates a potentially hazardous situation which, if not avoided, could result in death or serious injury.
- **CAUTION:** Indicates a potentially hazardous situation which, if not avoided, may result in minor or moderate injury.
- **CAUTION:** Using without the safety alert symbol indicates a potentially hazardous situation which, if not avoided, may result in property damage.

Read this manual completely.

Serious injury or death can result if the safety instructions are not followed. Everyone who operates the generator must read and fully understand all safety rules, operating instructions, and maintenance instructions, and maintenance instructions. Keep untrained people away.

Carbon Monoxide (CO) Hazard

Exhaust fumes are toxic, so do not use the generator indoors.

Fire danger

Fuel is highly flammable. Before refueling stop the engine, do not smoke while refueling, be careful not to spill fuel and never place the generator near flammable products.

Electricity Hazard

Do not use the generator in wet and humid areas, with unfavorable weather conditions and do not touch the machine with wet hands.

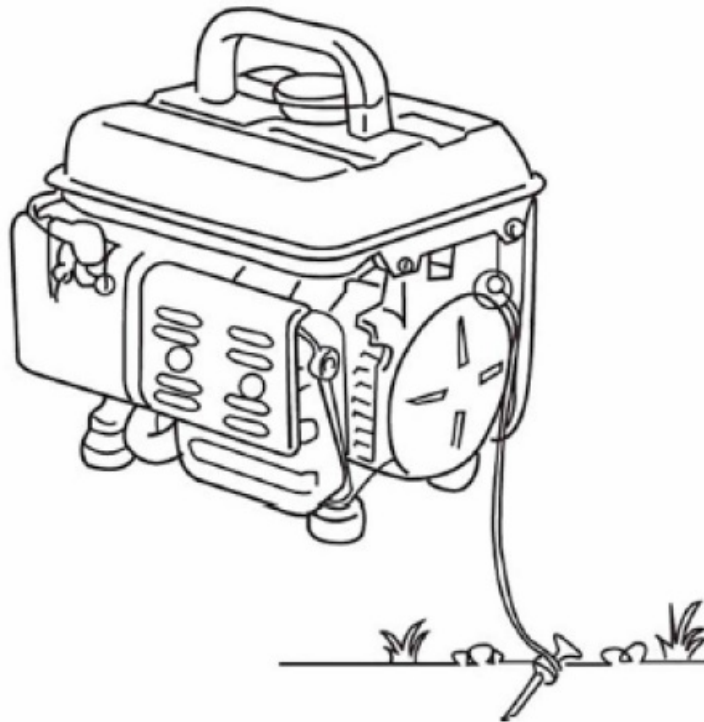
Risk of burns

The exhaust outlet and exhaust will become very hot, do not touch when in this state to avoid burns.

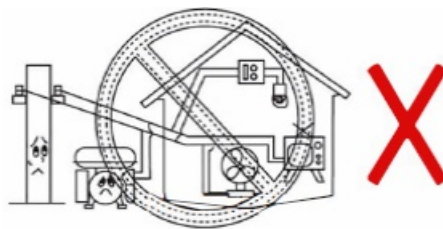
Note: Save these instructions

Caution

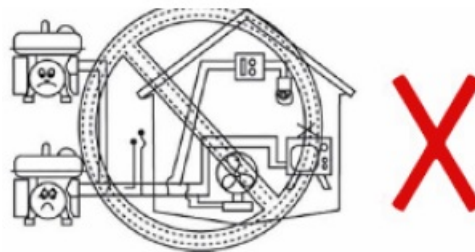
Always follow the safety information provided. Failure to follow can result in personal injury or serious engine damage. Make sure the generator is grounded.



- Do not connect directly to a public facility



- Do not connect it to another generator



1. Fuel is highly flammable. Use the correct fuel. Wipe up all fuel spills with a clean cloth. Keep gasoline, kerosene, matches and others away from the generator.
2. The exhaust gas contains poisonous carbon monoxide CO. Never use the generator in a poorly ventilated area.
3. Do not touch the exhaust or exhaust cover while the engine is running or only when you are stopping it.
4. Do not touch the generator with wet hands.
5. Do not use the generator in a location exposed to rain, snow, or splashing water.
6. The generator must always be grounded.
7. Do not connect external equipment before starting the generator.
8. Read all safety and operating instructions carefully. Never allow anyone to use the generator without proper instructions.
9. Always wear protective clothing, eye protection, hearing protection, and protective footwear.

Technical data

Voltage	220V
Frequency	50HZ / 60HZ
Power (continuous AC output)	650W / 800W
Power (max AC output)	720W / 900W
Motor	Single cylinder – 2 stroke – Air cooled
Fuel	Unleaded petrol
Lubrication system	Premixed (50:1)
Start system	Recoil
Fuel tank capacity	4.2 L
Displacement	63 CC
Autonomy	5.8 / 4.8 h
Noise level	95 dB

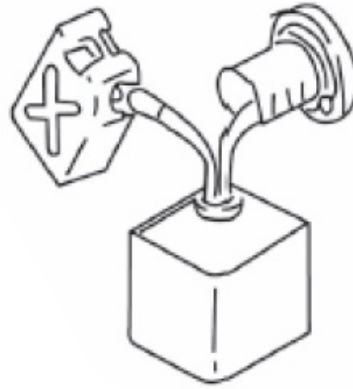
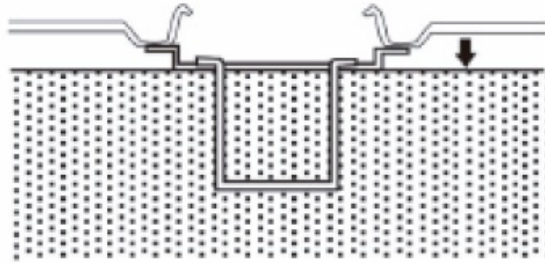
Note:

The manufacturer reserves the right to make design improvements and/or specification changes at any time without incurring any obligation to install them on previously sold units.

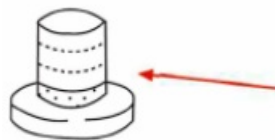
Instructions for use

Pre-operation verification

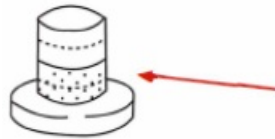
- Fuel tank capacity: 4L
- Use gasoline mixed with oil
- Do not fill above the top of the fuel filter
- How to make mixed gasoline: Gasoline Oil Mix Ratio 50: 1 Shake the fuel tank before starting



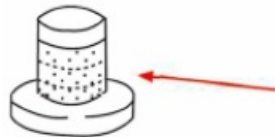
Fuel tank cap used to measure as:



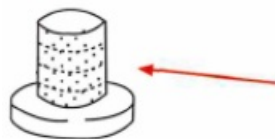
1. (L): 0.02 (L)



2. (L): 0.04 (L)



3. (L): 0.06 (L)



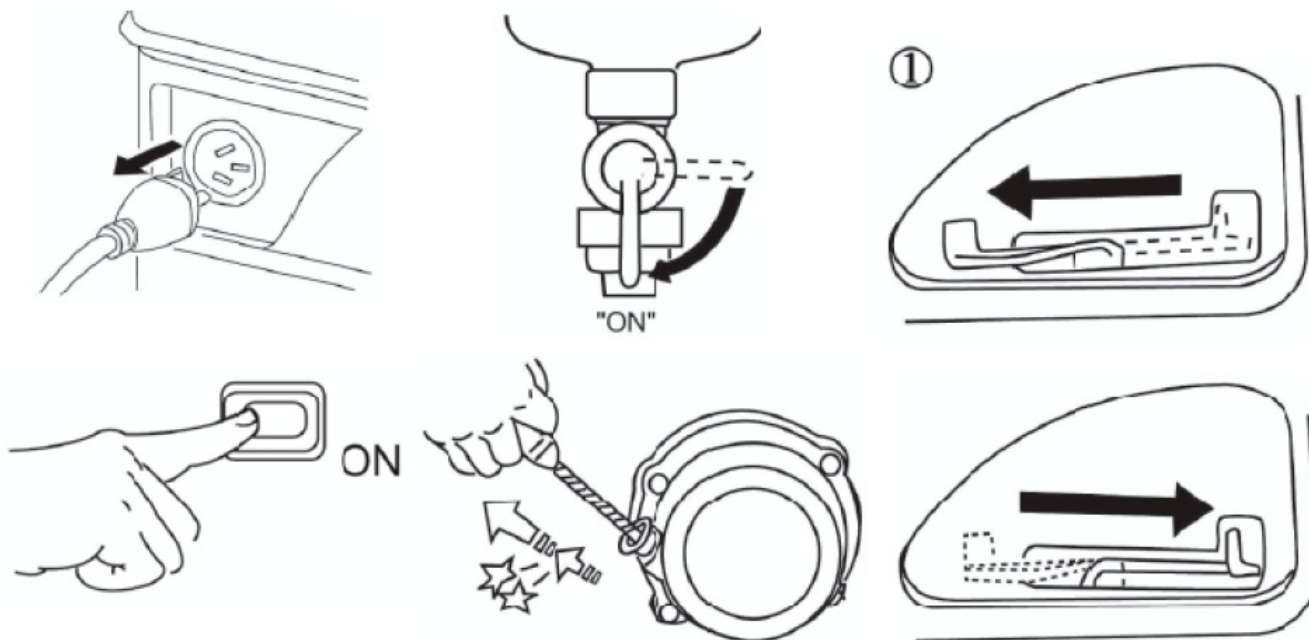
4. (L): 0.08 (L)

Shake the fuel tank before starting

Engine start

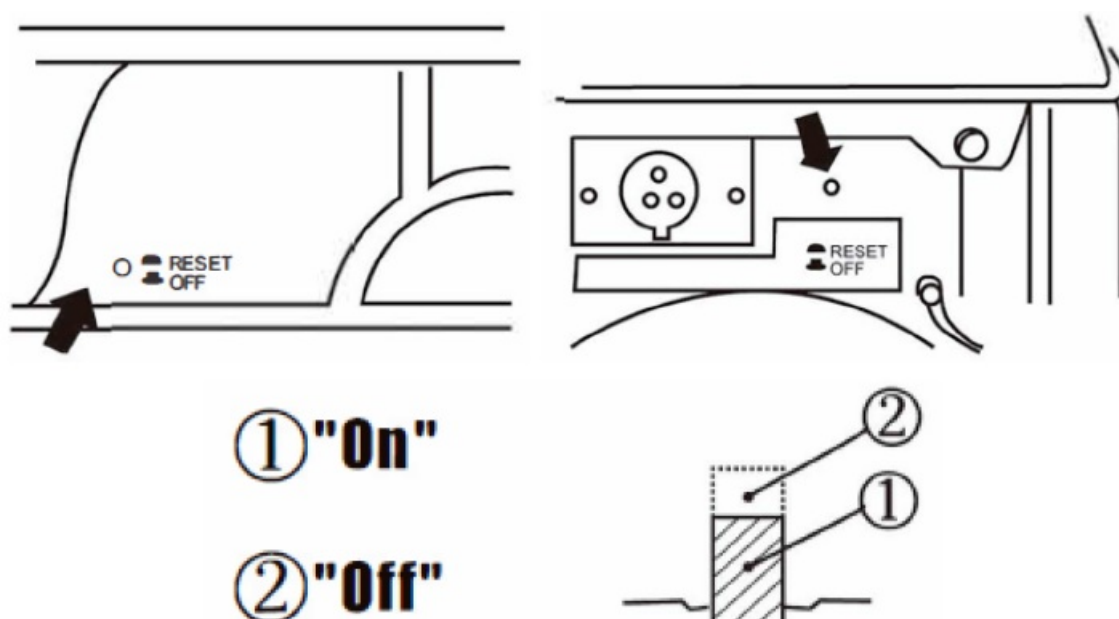
Follow the instructions provided below. Before starting, do not connect the generator to general power.

- Turn the fuel lever to "ON"
- Turn the choke lever to "1"
- Turn the engine switch to "ON"
- Pull the recoil starter slowly until you have slight tension. Then pull vigorously.
- Open the choke again.

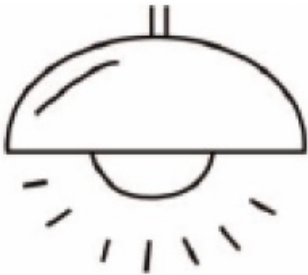




Safety devices

- Press to reset the AC or DC protector.
- Reduce the load within the rated output
- If the AC or DC protector (if equipped) is turned off.



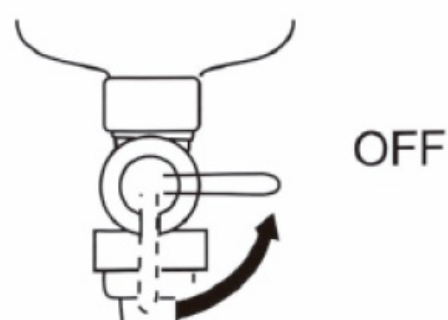
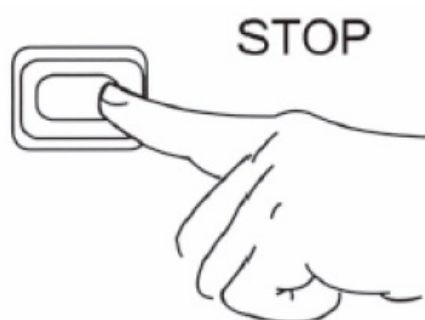
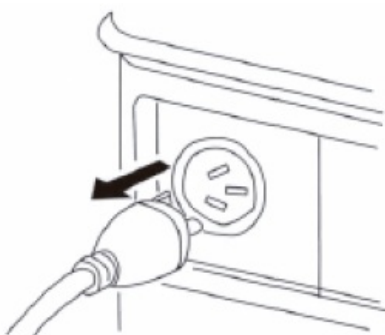
Range of application

Team			450	Power factor
AC		50 Hz	450W AC	1
		60 Hz	550W AC	
		50 Hz	330W AC	0.7 – 0.8
		60 Hz	410W AC	
		50 Hz	390W AC	0.7 – 0.95
		60 Hz	480W AC	

Stop the engine

Before stopping, turn off all electrical appliances.

1. Turn the engine switch to “stop”
2. Turn the fuel lever to the “OFF” position.

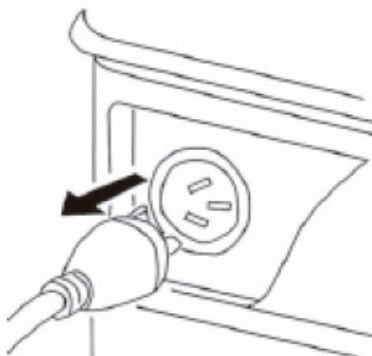


Connection

1. Wind the cord 2-3 turns around the handle.
2. Start the engine
3. Connect it to the AC outlet

Battery charger (if equipped)

Connect the red wire (supplied as an accessory) to the positive pole (+) and black to the negative pole (-)



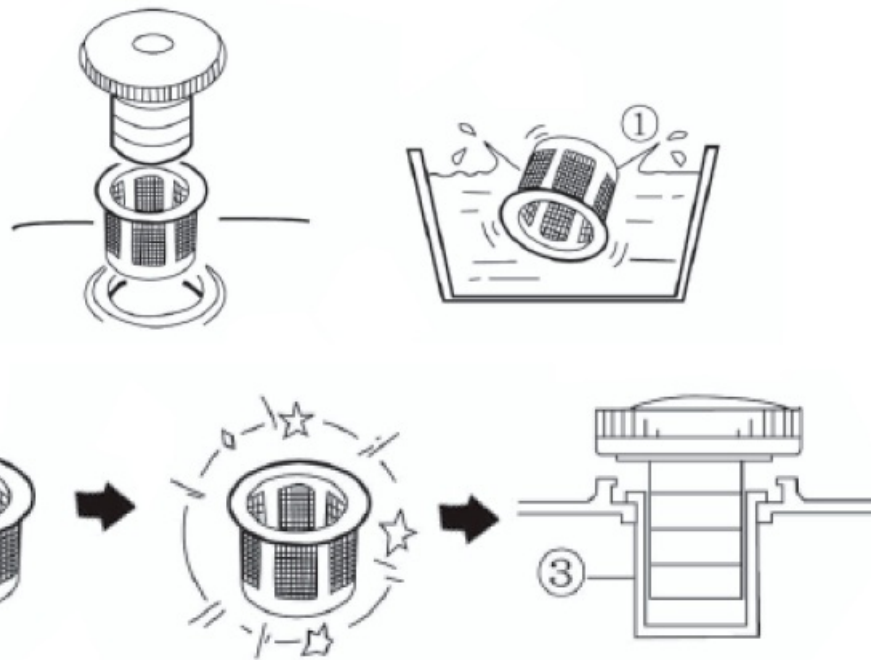
Maintenance and storage

Before performing maintenance, the machine must be placed in maintenance mode. Turn off the motor. After servicing, make sure all guards and safety features are put back in place. Failure to follow this warning can result in serious injury.

ITEM	Observations	Every 50h or every month	Every 150h or every 3 months
Spark plug	Remove the carbon, adjust the gap Replace if necessary	x	
Air filter	Clean up. Replace if necessary		x
Fuel filter	Clean up. Replace if necessary		x

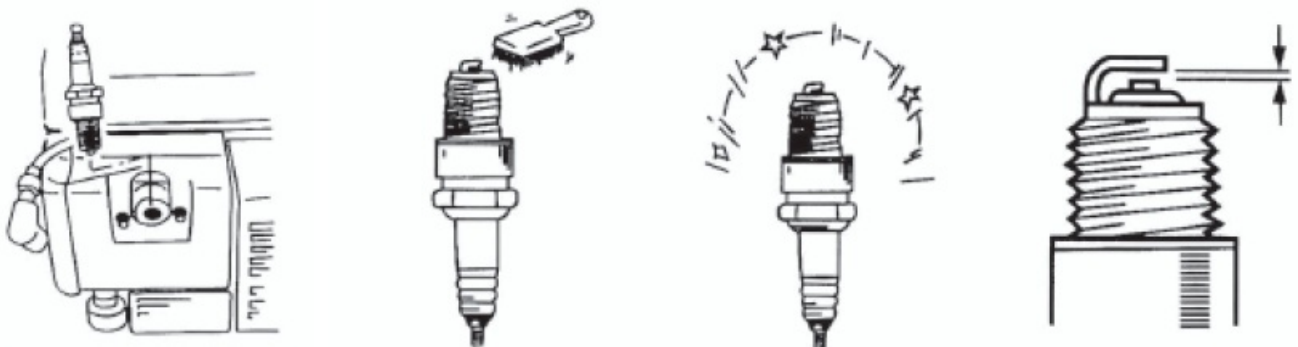
Fuel filter

- Clean with solvent
- Clean up
- Insert



Spark plug

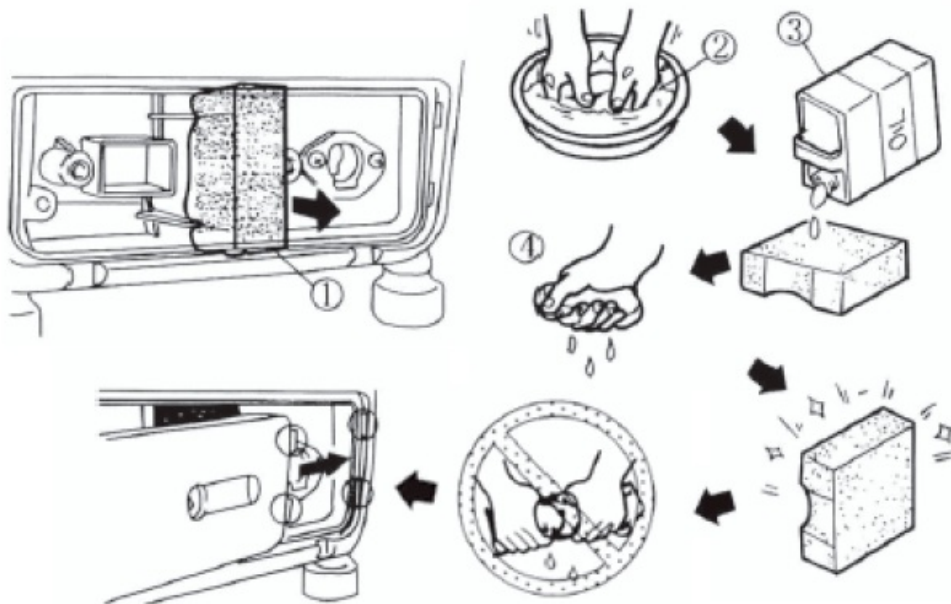
- Remove the spark plug
- Remove carbon deposits
- Check for discoloration.
- Check the spark plug gap: 0.7 ~ 0.8mm (0.028 ~ 0.031)



Air filter

Never run the engine without the air filter.

1. Air filter
2. Wash with a degreaser.
3. Engine oil (SAE30)
4. Drain the filter and allow it to



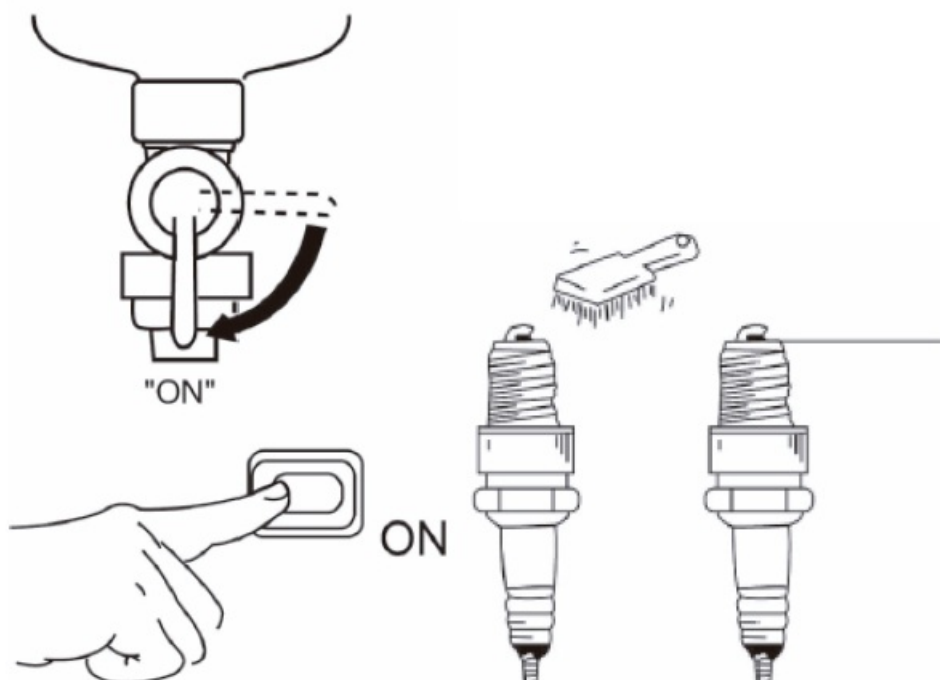
Troubleshooting

The motor does not start

- Check the fuel. (Fuel switch "ON").
- Engine switch "ON"
- Check the spark plug

If the engine still does not start, check:

- Clogged fuel tap
- Air filter clogging
- Consult your dealer




Environment

- Protect the environment. Recycle the oil used by this machine by taking it to a recycling center. Do not pour used oil into drains, land, rivers, lakes or seas.
- Dispose of your machine in an environmentally friendly way. We must not dispose of machines together with household garbage. Its plastic and metal components can be classified according to their nature and recycled.

The materials used to pack this machine are recyclable. Please do not dispose of the packaging in the household waste. Dispose of these packages at an official waste collection point.

Documents / Resources

	anova GC900 Generator [pdf] User Manual GC900 Generator, GC900, Generator
---	--

References

- [Anova | Maquinaria para bosque y jardín](#)
- [Millasur | Maquinaria y recambios para bosque & jardín |](#)