



ArcSource 4 MC II Anolis LED Lighting User Manual

[Home](#) » [ANOLIS](#) » ArcSource 4 MC II Anolis LED Lighting User Manual 

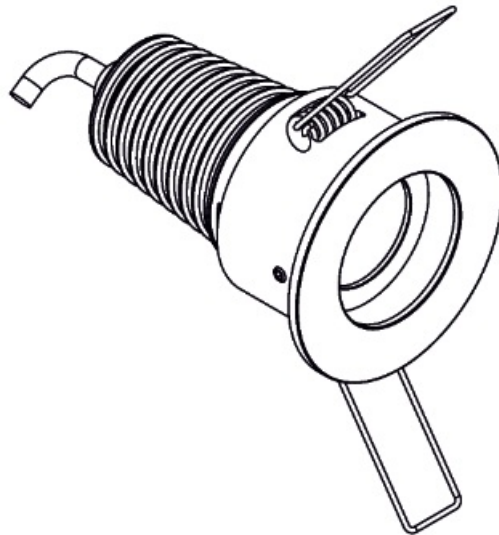


Contents

- [1 ArcSource 4 MC II](#)
- [2 Attention](#)
- [3 Installation](#)
- [4 RJ45 pin connection](#)
- [5 Technical specifications:](#)
- [6 Dimensions:](#)
- [7 Maintenance](#)
- [8 Documents / Resources](#)
- [9 Related Posts](#)

ArcSource 4 MC II

The module generates colored light by means of RGBW LED multichip. The product was designed to use with the ArcPower drivers and for indoor use only.

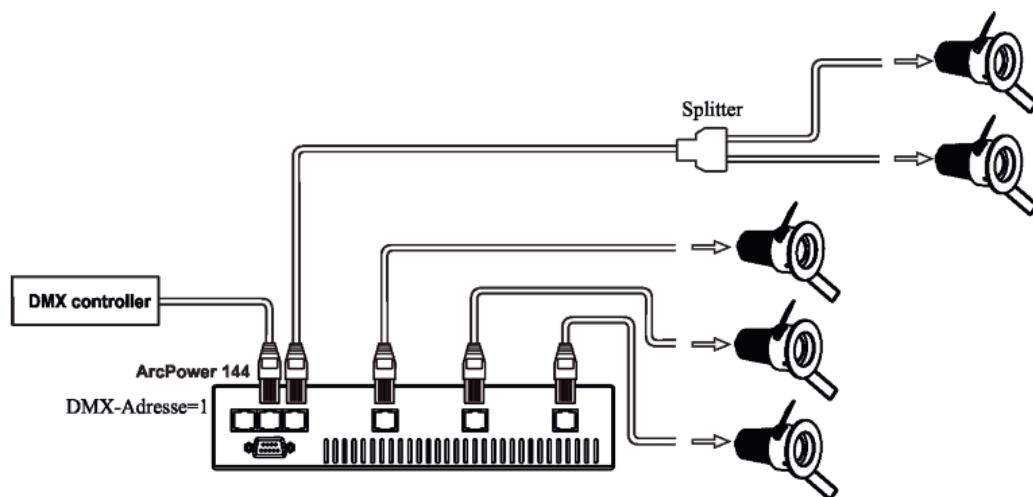


Attention

- Do not install the module near high inflammable liquids or materials.
- Do not allow anything to rest on the module.
- Do not use the module near high humidity or water or expose to the rain.
- Do not install the module near the naked flames.
- Do not install the module in dirty, dusty or badly ventilated location.
- Sufficient air accessing to the cooling ribs of the module housing has to be ensured.
- Use the standard MR16 fittings to fix the modules on a suitable place.

Installation

The ArcSource unit should be connected to the ArcPower drivers as stated in technical specifications. See the ArcPower drivers user manuals for full details of mains power requirements and DMX operation.



ArcSource unit is supplied with 1.5 m of cable for direct connection to the ArcPower drivers.

CAUTION!

Avoid looking directly into the LED light beam at close range!

Maximum possible number of LED modules connected to the one ArcPower 36 (or one LED output of the ArcPower 72/144/360/16×6/RackUnit) is mentioned in the table below.

LED module	LED multich ips	Max.numberof conne ctedmodules	Compatible LED drivers
ArcSource 4 MC	1	10	ArcPower 36/72/144/360
ArcSource 4 MC	1	2	ArcPower 16×6
ArcSource 4 MC	1	12	ArcPower Rack Unit

RJ45 pin connection

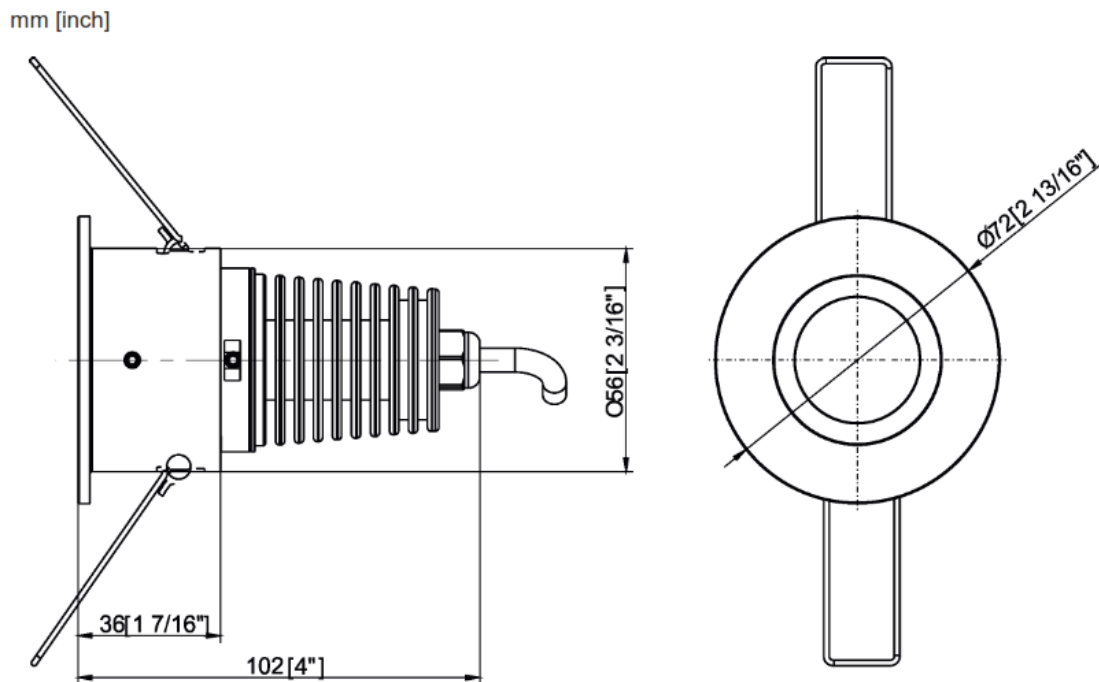


Pin	Function	Wire
1	Red +	Orange/white
2	Green +	Orange
3	Blue +	Green/white
4	White +	Blue
5	Red –	Blue/white
6	Green –	Green
7	Blue-	Brown/white
8	White –	Brown

Technical specifications:

Max. power consumption:	4.4W
Max input current per colour:	350 mA
Recommended power supplies:	ArcPower 36/ 72/ 144/ 360, ArcPower Unit, ArcPower 16x6, DRS
Operating ambient temp.range:	-20°C/+40°C
Surface temperature:	+44°C@ambient 25°C
Cooling:	convection
LED device:	1x multichip (RGBCW, WW)
Projected Lumen Maintenance:	L90B10 >90.000 hrs, Ta = 25°C / 77°F
Led life expectancy:	minimum 60,000 hours
Optical systems available:	1 10°, 15°, 20°, 30°, 40°, 60°, 90°, 10°x30°, 10°x 60°, 35°x70°, 15°x90
Construction:	precision turned aluminium
Weight:	0.25
Ingress protection:	IP 2X
Flammability:	94V-0 flame class rating
Power /data plug:	RJ45
Power /data cable:	24 AWG x 4P,category 5e or other cable from 8x24AWG to 8x 20AWG

Dimensions:



Accessories

1 x Splitter (P/N 13050690)

Maintenance

- Keep the module dry.
- Operate only in places where the sufficient airflow to cool the module is present
- Periodically clean the front transparent cover. Use a moist, lint-free cloth. Never use alcohol or solvents!

QR code for user manual



<https://www.anolislighting.com/resource/arcsourcetm-4mc-ii-user-manual-ce->

Anolis 
A ROBE Business

May 25, 2022


Specifications are subject to change without notice

Made in CZECH REPUBLIC by ROBE LIGHTING s.r.o.

Palackeho 416/20 CZ 75701

Valasske Mezirici

Version 1.2CE

	<p>ANOLiS ArcSource 4 MC II Anolis LED Lighting [pdf] User Manual</p> <p>ArcSource 4 MC II Anolis LED Lighting, ArcSource 4 MC II, MC II, ArcSource, Anolis LED Lighting, Anolis Lighting, LED Lighting, Lighting</p>
---	---