



ANLY AH5F Delay Timer



ANLY AH5F Delay Timer Instructions

[Home](#) » [ANLY](#) » ANLY AH5F Delay Timer Instructions 

Contents

- [1 ANLY AH5F Delay Timer](#)
- [2 Product Usage Instructions](#)
- [3 CHARACTERISTIC](#)
- [4 SPECIFICATION](#)
- [5 TYPE SELECTION](#)
- [6 CONNECTION](#)
- [7 Documents / Resources](#)
 - [7.1 References](#)
- [8 Related Posts](#)



ANLY AH5F Delay Timer



Specifications

- **Operating Voltage:** DC(V): 24, AC(V): 24, 110, 220, 240
- **Allowable Operating Voltage Range:** 85-110% of rated operating voltage
- **Rated Frequency:** 50/60 Hz
- **Contact Rating:** 250VAC 5A (resistive load)
- **Reset Time:** Max 0.3s
- **Power Consumption:** Approx. 3VA
- **Life:** Mechanical: 5,000,000 times, Electrical: 100,000 times
- **Ambient Temperature:** -10°C to +50°C (without condensation & freezing)
- **Ambient Humidity:** Max 85%RH (without condensation)
- **Altitude:** Max 2000m
- **Weight:** Approx. 170g

Product Usage Instructions

Type Selection

The AH5F Off Delay Timer is available in two types: AH5F and AH5F-2. Choose the type based on your requirements.

Connection

Refer to the connection diagram provided in the user manual to correctly connect the timer. Ensure proper wiring for safe operation.

Timing Chart

Understand the timing chart provided for your specific model (AH5F or AH5F-2) to set and reset the timer accurately

Dimensions

Note the dimensions of the timer for surface mounting (N type) or flush mounting (Y type) configurations. Use the recommended sockets for installation.

FAQ:

Q: Can the delay time be adjusted on the AH5F Off Delay Timer?

A: Yes, the delay time on the AH5F can be adjusted up to 60 minutes as per your requirement.

AH5F OFF DELAY TIMER

CHARACTERISTIC

- Off delay timer with adjustable time range
- Delay time up to 60min
- External manual reset available
- CE certified

SPECIFICATION

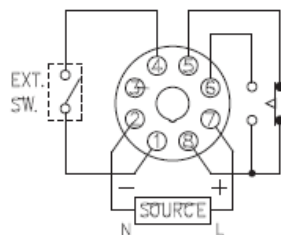
Operating voltage	DC(V): 24 AC(V): 24, 110, 220, 240
Allowable operating voltage range	85~110% of rated operating voltage
Rated frequency	50 / 60 Hz
Contact rating	250VAC 5A (resistive load)
Reset time	MAX 0.3S
Power consumption	Approx. 3VA
Life	Mechanical: 5,000,000 times Electrical: 100,000 times
Ambient temperature	-10 ~ +50°C (without condensation & freezing)
Ambient humidity	MAX 85%RH (without condensation)
Altitude	MAX 2000m
Weight	Approx. 170g

TYPE SELECTION

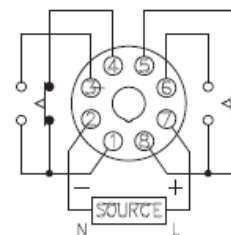
Type	AH5F	AH5F-2
Output contact	1C	2C
Instantaneous reset	○	----
Time range	3, 6, 10, 30 or 60S 3, 6, 10, 30 or 60M	3, 6, 10, 30 or 60S 3, 6, 10, 30 or 60M

CONNECTION

AH5F

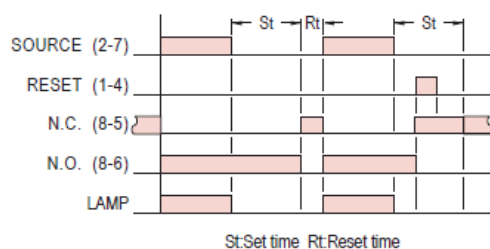


AH5F-2

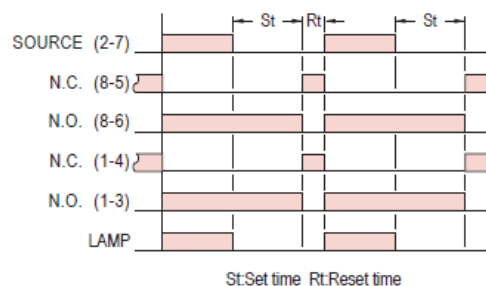


TIMING CHART

AH5F

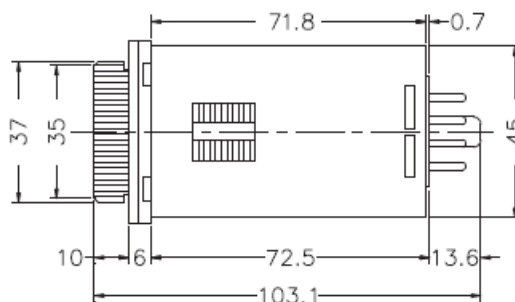
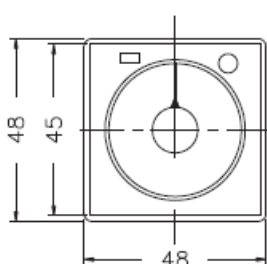


AH5F-2

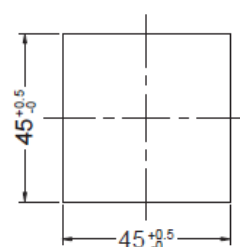
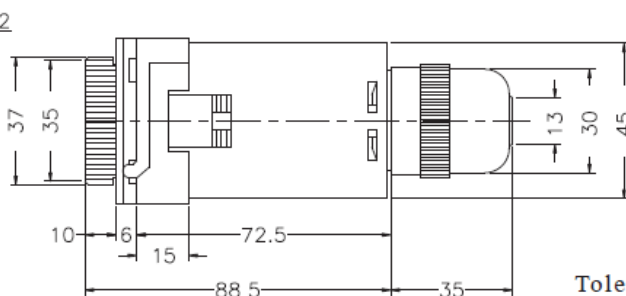
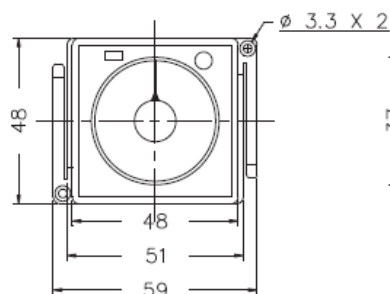


DIMENSIONS : (mm)

N-type(Surface Mounting): Using P2CF-08 or PF085A Socket



Y type(Flush Mounting): Using Y50 Frame & US-08 Socket or P3G-08 Socket



Tolerance: ± 0.1

ANLY ELECTRONICS CO., LTD.

<http://www.anly.com.tw>

• TAIWANI MAIN OFFICE : ANLY ELECTRONICS CO., LTD.

No. 19, Lane 202, Fushou St., Xinzhuang Dist., New Taipei City 242, Taiwan

TEL: +886-2-2996-3202 FAX: +886-2-2996-2017

- **HONG KONG OFFICE : ANLY ELECTRONICS (HK) LTD.**

Flat K, 13/F, Edward Mansion, 141 Prince Edward Road W., Kowloon, Hong Kong

TEL: +852-2397-2505 FAX: +852-2397-6080

- **ANLY TECHNOLOGY (WUXI) CO., LTD.**

2F, Building A, Plot 1, No. 28, Zhanhong Rd., Xinwu Dist., Wuxi, Jiangsu, P.R.China

- **JUSTY ELECTRONICS (M) SDN, BHD.**

No. 1, Jalan 6189B, Kawasan Perindustrian Trisegi, Batu 3 1/2 Off Jalan Sungei Besi, 57100 Kuala Lumpur, Malaysia

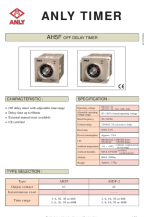
TEL: +60-3-7983-5758 FAX: +60-3-7981-5052

- **PT. ANLY ELECTRONICS INDONESIA**

Jl. Pangeran Jayakarta 117/B9, Jakarta Pusat, 10730 Indonesia

TEL: +62-21-624-8436 FAX: +62-21-626-1228

Documents / Resources

	<p>ANLY AH5F Delay Timer [pdf] Instructions AH5F, AH5F-2, AH5F Delay Timer, AH5F, Delay Timer, Timer</p>
--	--

References

-  anly.com.tw
- [User Manual](#)

Manuals+, Privacy Policy

This website is an independent publication and is neither affiliated with nor endorsed by any of the trademark owners. The "Bluetooth®" word mark and logos are registered trademarks owned by Bluetooth SIG, Inc. The "Wi-Fi®" word mark and logos are registered trademarks owned by the Wi-Fi Alliance. Any use of these marks on this website does not imply any affiliation with or endorsement.