



anko IM2023V2 3 in 1 Playpen Instruction Manual

[Home](#) » [Anko](#) » anko IM2023V2 3 in 1 Playpen Instruction Manual 



3-In-1 Playpen
fits openings: 73cm – 376cm
6-24 months
Instruction Manual

Contents

- [1 IM2023V2 3 in 1 Playpen](#)
- [2 PARTS INCLUDES](#)
- [3 INSTALLATION](#)
- [4 OPERATION](#)
- [5 MAINTENANCE](#)
- [6 Documents / Resources](#)
 - [6.1 References](#)
- [7 Related Posts](#)

IM2023V2 3 in 1 Playpen



SCAN HERE FOR MORE INFORMATION ON INSTALLATION OR SPARE PARTS



<https://qrstud.io/5pzx9ds>

IMPORTANT! READ AND FOLLOW THESE INSTRUCTIONS CAREFULLY AND KEEP FOR FUTURE REFERENCE.

WARNINGS

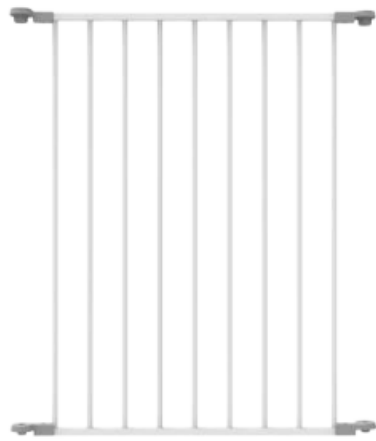
- To prevent serious injury or death, securely install gate or enclosure and use according to manufacturer's instructions.
- Never leave child unattended when using this product.
- Incorrect installation can be dangerous.
- Do not use the safety barrier if any components are damaged, missing or disassembled.
- The safety barrier must not be fitted across windows.
- Never use with a child able to climb over or dislodge/open the safety barrier which may cause danger.
- Never install this product on glass doors. Install this product against reliable doors or walls.
- To prevent falls, never use at the top of stairs.
- If the safety barrier is used at the bottom of the stairs, it should be positioned at the front of the lowest tread possible.

To prevent injury, do not put any goods which can be grabbed by children or pets near this product.

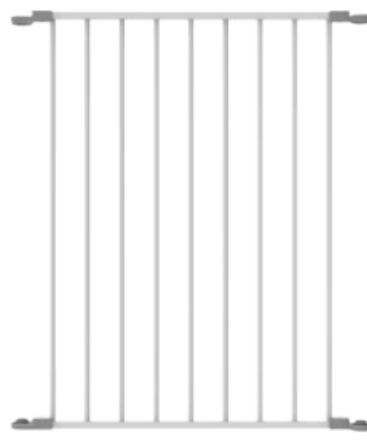
- Before using this product, carefully inspect for any loose parts and whether any parts need to be tightened.
- Ensure the product to be installed is horizontal and flat on the floor.
- This product is intended for use with children from 6 to 24 months or small to medium pets.

- Regularly check that the safety barrier is properly installed and secure.
- Any additional or replacement parts should be obtained from the Customer Service Centre of the entity you purchased this product.
- Barrier must be fitted between rigid surfaces such as plaster board, timber or hardwall.
- Always check that the safety barrier is correctly closed.
- Use only with the locking/latching mechanism securely engaged.
- This safety barrier is for domestic use only.
- Never use without Wall Brackets.
- This safety barrier must be fitted between a rigid surface such as doorways or walls along with wall brackets secured with screws.
- A maximum of 6 panels including gate can be used as a safety barrier.
- Check regularly that all assembly fittings are tightened properly.
- Do not use the playpen close to an open fire or other heat source.
- Do not leave anything in the playpen which may provide a foothold or create a danger of suffocation or strangulation.
- Ensure that the playpen is fully erected and all the locking mechanisms are engaged before placing your child in the playpen.
- This safety barrier has a manual closing system.

PARTS INCLUDES



3 x
Topside Barrier Panels



2 x
Underside Barrier Panels



1 x
Gate Panel



1 x
Bottom (A) Cap
A Side



1 x
Top (A) Cap
A Side



4 x
Wall Brackets



1 x
Bottom (B) Cap
B Side



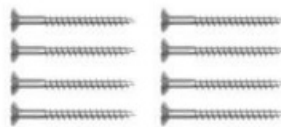
1 x
Top (B) Cap
B Side



7 x
Corner Threads



8 x
Wall Plugs



8 x
Screws



1 x
Gate Stopper
*Pre-Installed



7 x
Corner Tubes

INSTALLATION

ROOM DIVIDER OR SAFETY BARRIER

Suitable placement & configuration of Playpen/Barrier.

**PLAYPEN
(FREE STANDING)**



**3 PANEL BARRIER
(WALL MOUNTED)**



**4 PANEL BARRIER
(WALL MOUNTED)**



**6 PANEL BARRIER
(WALL MOUNTED)**



Note: Ensure additional Corner Tube and Corner Thread are installed when assembling the 6 PANEL BARRIER.

PLAYPEN – FREE STANDING



Remove Playpen from box.
Loosen each Corner Thread.

Assemble into hexagon shape.



Align the two loose panel ends,
then insert Corner Tube into the
bottom first, and then the top.

Tighten all 6 x Corner Tubes
anti-clockwise until locked firm.



OPERATION

HOW TO OPEN GATE

1.



Using one hand, place thumb on the button and grip Gate Panel with fingers. Slide button across and lift Gate Panel simultaneously.

2.



3.



Open gate in either direction.

When released, gate will swing closed automatically.

To enable stay open feature, open gate to 90° angle.

Always check gate is properly closed when in use.

Note: If gate is open and excessive pressure is applied, (such as standing or swinging on the gate) structural damage may occur.

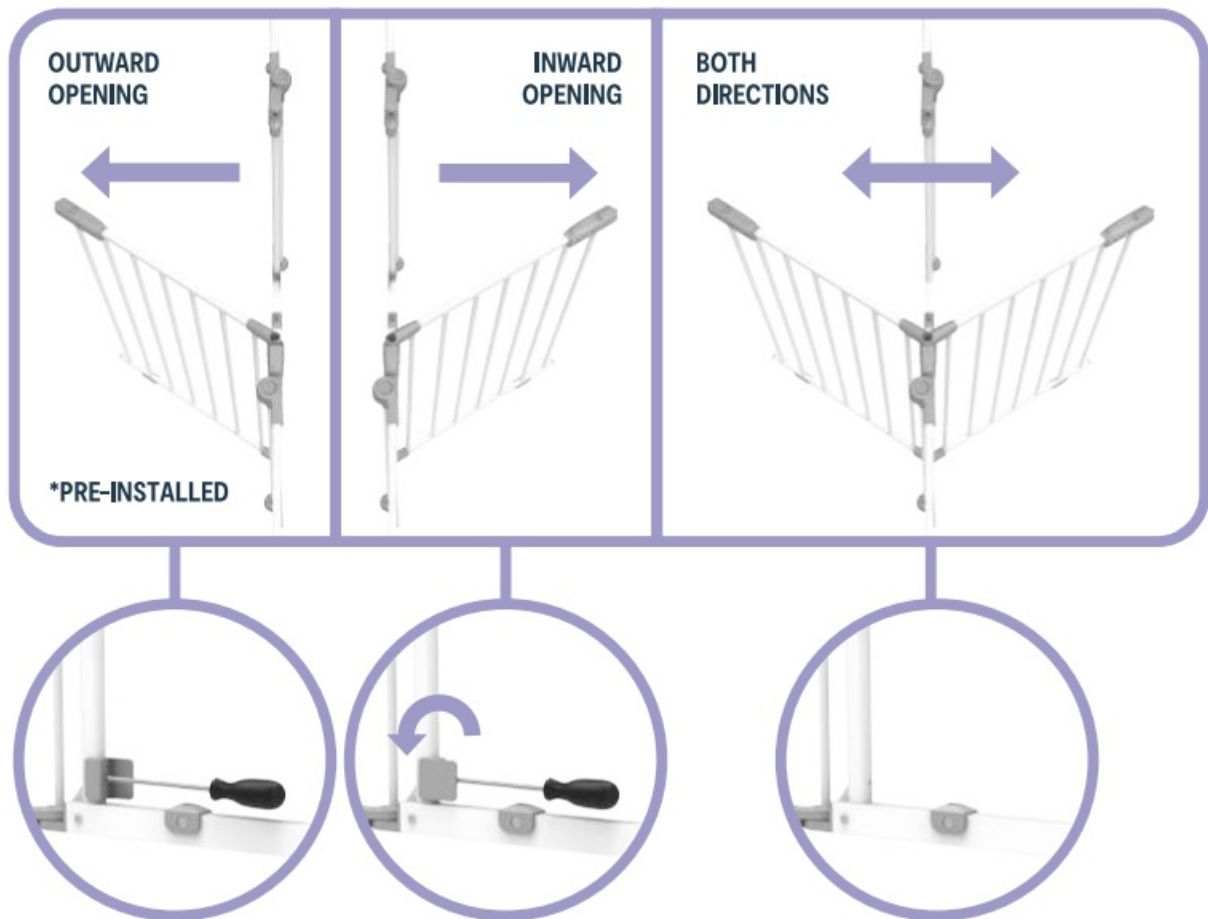
GATE OPENING DIRECTION

The Gate Stopper is pre-installed for Outward Opening.

If Inward Opening is required, use a Phillips head screwdriver (not included) to unscrew the Gate Stopper, flip the opposite way and screw back in.

If the gate is required to open in both directions, unscrew and remove the Gate Stopper completely.

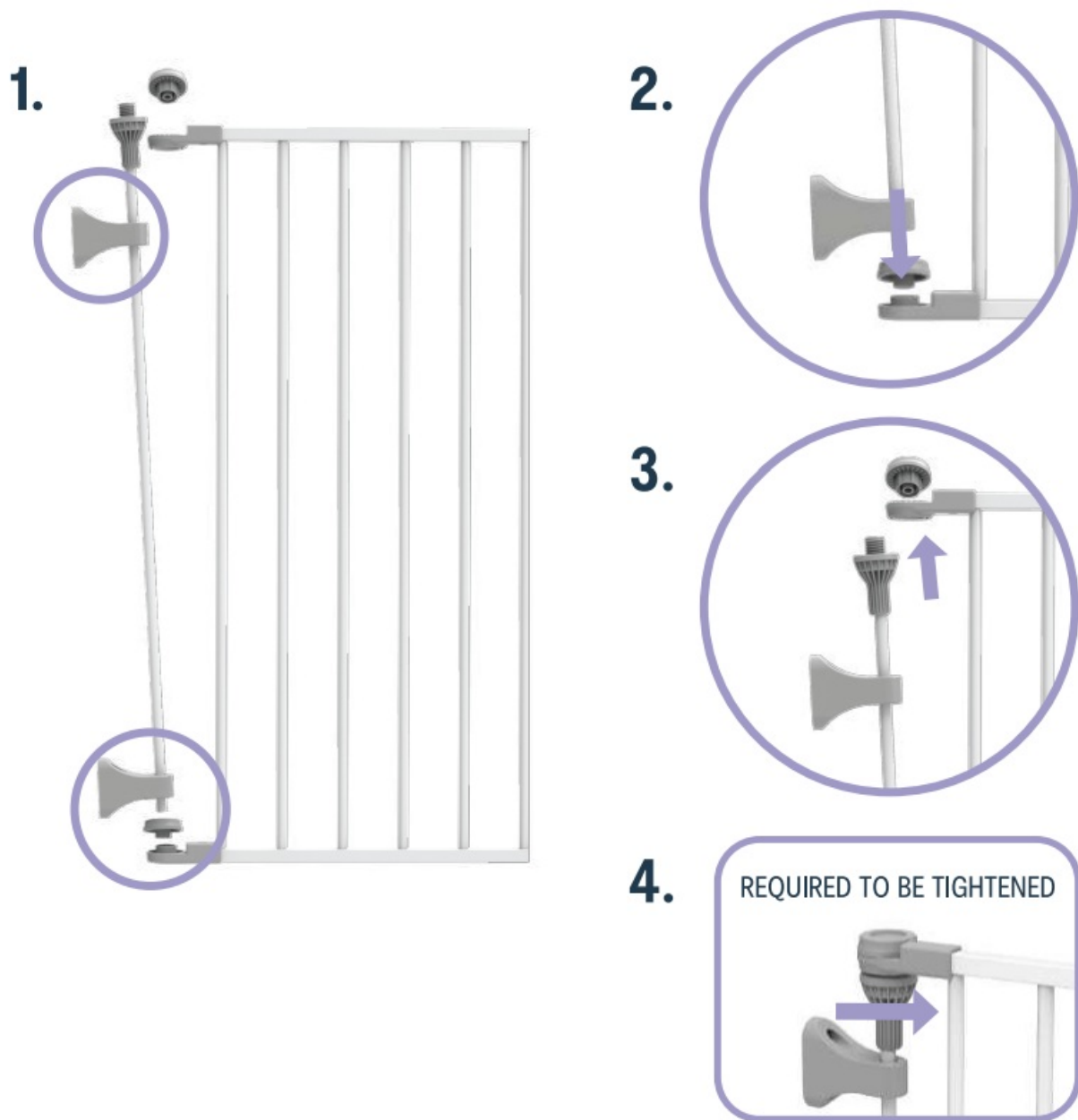
Refer to below steps.



BARRIER – WALL MOUNTED

Step 1. A – Side Assembly

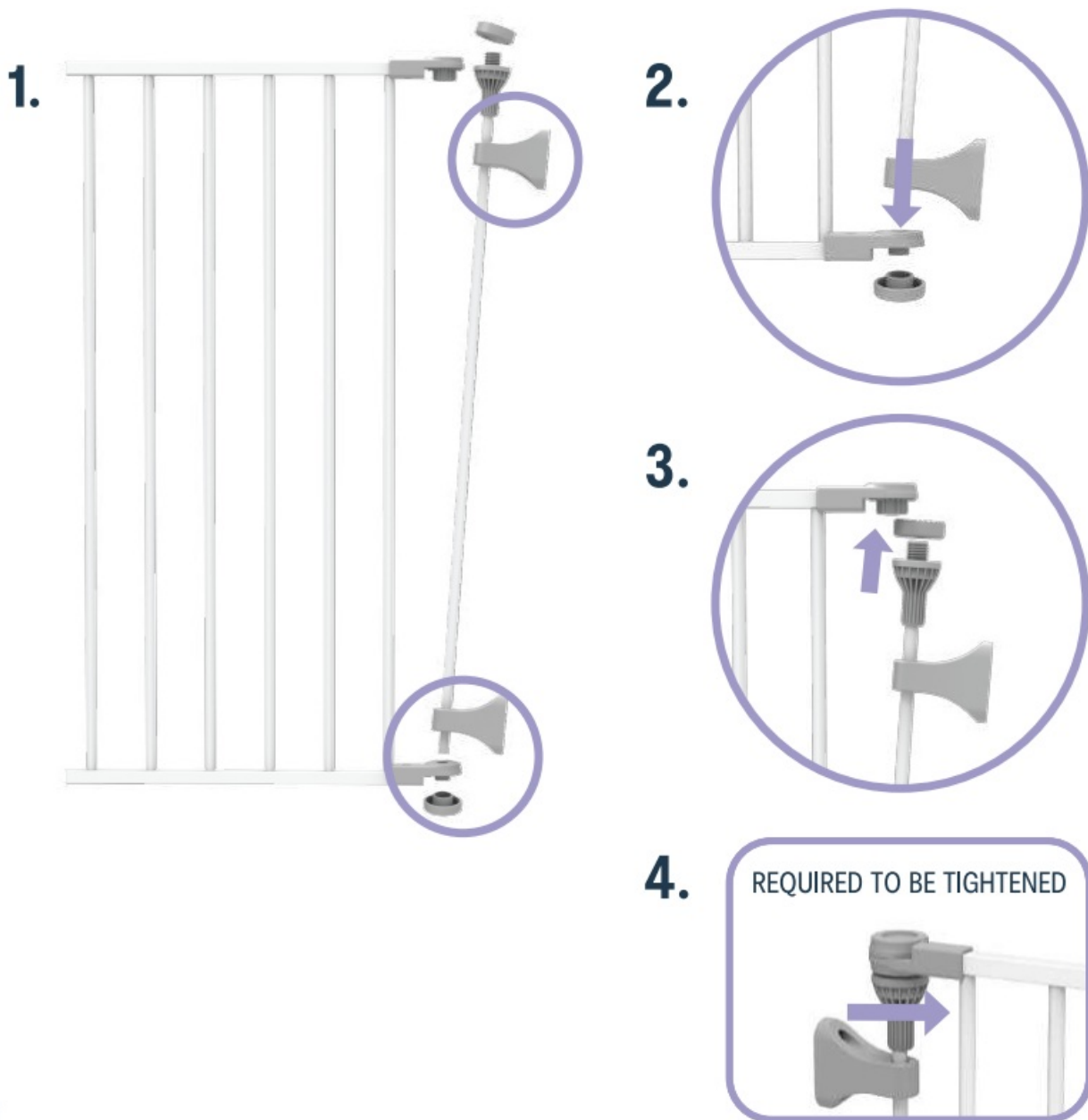
1. Place Wall Brackets through the Corner Tube. Insert the Corner thread at the top of the tube. Insert Bottom (A) Cap at the bottom of the tube.
2. Insert the assembly into the bottom hole on the panel.
3. Hold Corner Thread and press downwards. Tilt to insert the assembly into the top hole on the panel. Add Top (A) Cap on top of the panel and turn clockwise until loosely fit.
4. Turn Corner Thread anti-clockwise to tighten the assembly to the panel. (Do Not Overtighten.)



BARRIER – WALL MOUNTED

Step 2. B – Side Assembly

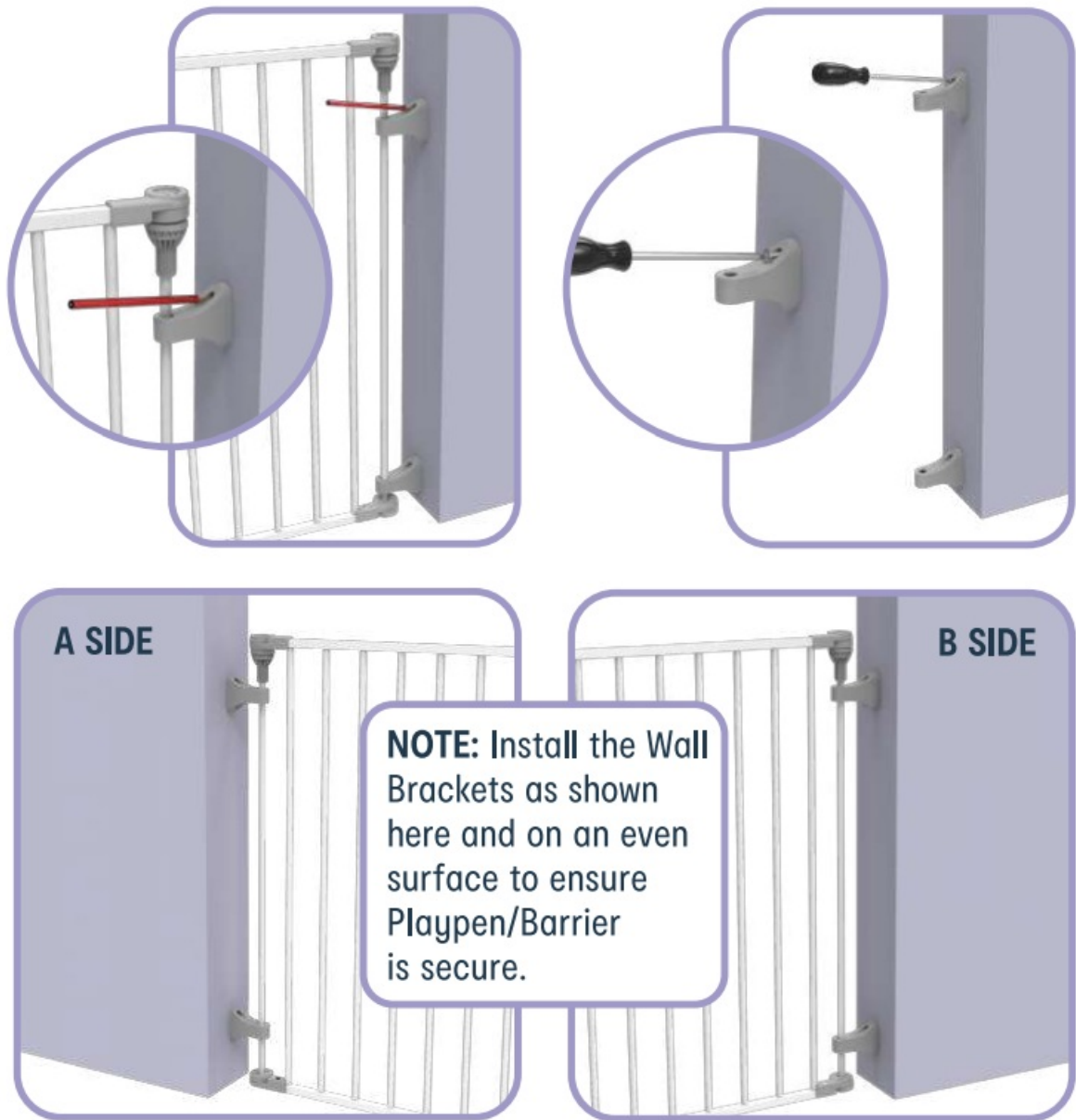
1. Place Wall Brackets through the Corner Tube. Insert the Corner Thread at the top of the tube. Add Bottom (B) Cap.
2. Insert the Corner Tube through the hole on the panel into Bottom (B) Cap.
3. Add Top (B) Cap to the slot at the top of the panel and hold it.
Tilt to insert the assembly through the hole of Top (B) Cap.
4. Turn Corner Thread anti-clockwise to tighten the assembly to the panel. (Do Not Overtighten.)



BARRIER – WALL MOUNTED

Step 3. Wall Mounting

1. Use a pencil to mark screw hole positions for the Top and Bottom Wall Brackets.
2. Disassemble the Wall Brackets from the Barrier Panel and Corner Tube.
Pre-drill and screw the Wall Brackets in place.
3. Align panel onto the Wall Brackets.
4. Replace the Corner Tube through the Wall Brackets.
5. Assemble the Corner Tube by following applicable steps on pages 10 -11. Ensure the Corner Tubes are fixed to the Barrier Panel firmly.



MAINTENANCE

CARE INSTRUCTIONS

Simply use a soft damp cloth to wipe Playpen/Barrier.

Dry thoroughly after cleaning. Do not use chemicals or abrasive cleaners.



IMAGES/DRAWINGS IN THE MANUAL ARE FOR VISUAL PURPOSES ONLY. ACTUAL PRODUCT MAY VARY SLIGHTLY. THE MANUFACTURER RESERVES THE RIGHT TO CHANGE ANY SPECIFICATION OR FEATURE WITHOUT PRIOR NOTICE.

MADE IN CHINA

CUSTOMER SERVICE:

KMART AU: 1800 124 125

KMART NZ: 0800 945 995

TARGET AU: 1300 753 567

K: 43-363-865

T: 68-948-931

AFTER SALES SUPPORT:

AU: 03 9005 0127. NZ: 0800 945 995

WWW.CHILDSAFETYHELP.COM.AU

SCAN HERE FOR MORE INFORMATION ON INSTALLATION OR SPARE PARTS



<https://qrstud.io/5pzx9ds>

	anko IM2023V2 3 in 1 Playpen [pdf] Instruction Manual IM2023V2 3 in 1 Playpen, IM2023V2, 3 in 1 Playpen, Playpen
--	---

References

- [User Manual](#)

[Manuals+](#), [Privacy Policy](#)

This website is an independent publication and is neither affiliated with nor endorsed by any of the trademark owners. The "Bluetooth®" word mark and logos are registered trademarks owned by Bluetooth SIG, Inc. The "Wi-Fi®" word mark and logos are registered trademarks owned by the Wi-Fi Alliance. Any use of these marks on this website does not imply any affiliation with or endorsement.