

**anko**  
**D71-INTRA-43482269**  
**Speaker Aroma**  
**Diffuser**



## anko D71-INTRA-43482269 Speaker Aroma Diffuser Instruction Manual

[Home](#) » [Anko](#) » anko D71-INTRA-43482269 Speaker Aroma Diffuser Instruction Manual 

### Contents

- 1 anko D71-INTRA-43482269 Speaker Aroma Diffuser
- 2 Names Of Parts
- 3 Includes
- 4 Light button (left side)
- 5 Bluetooth Mode
- 6 Operation
- 7 Cleaning and maintenance
- 8 How to pour out the water
- 9 Troubleshooting
- 10 Warranty
- 11 CONTACT
- 12 Documents / Resources
  - 12.1 References
- 13 Related Posts

# anko

anko D71-INTRA-43482269 Speaker Aroma Diffuser



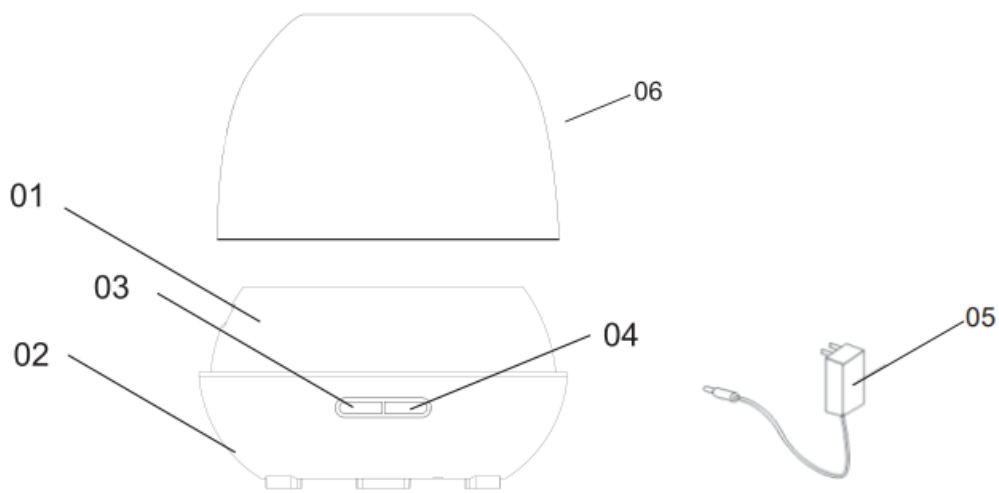
### **Important!**

- Care should be taken with the use of diffusers around animals. Both the choice of essential oils and where animals
- For details regarding filling, please refer to the section “OPERATION” of the user manual.
- For details regarding cleaning and descaling, please refer to the section “CLEANING AND MAINTAINENCE” of the user manual. Unplug the appliance during filling and cleaning.

### **Warning**

1. Important safety instructions: The following safety precautions should always be followed, to reduce the risk of electric shock, personal injury or fire. It is important to read all of these instructions carefully before using the product and to save them for future reference or new users.
2. Unplug the appliance during filling and cleaning.
3. This appliance is not intended for use by persons (including children) with reduced physical, sensory or mental capabilities, or lack of experience and knowledge unless they have been given supervision or instruction concerning use of the appliance by a person responsible for their safety.
4. Children should be supervised to ensure that they do not play with the appliance.
5. Care should be taken when using the appliance due to the emission of hot water vapor.
6. The appliance is only to be used with the recommended vaporizing medium. The use of other substances may give rise to a toxic or create a fire risk.
7. Use supplied AC adaptor only.

### **Names Of Parts**



1. Water tank
2. Base
3. Light button
4. mist button
5. Power Adapter
6. Top

### **Includes**

- Main unit
- AC Adapter: Input 100~240V. a.c Output 24V.d.c

### **Mist (Power) and Light Buttons**

- Mist (Power) button (right side)
- 1st press: the continuous high mist mode will turn on and in 1h timer mode
- 2nd press: switch to 3h timer mode
- 3rd press: switch to 6h timer mode
- 4th press: switch to stay on mode
- 5th press: turn on the unit

### **Please note:**

1. Turn on the unit with default high mist mode.
2. Long press the “MIST” button, you can hear two beep sounds and turn to small mist mode.
3. Long press the “MIST” button again, and you can hear three beep sounds turn to intermittent work mode with 30s mist ON and 30s mist OFF.
4. Long press the “MIST” button again, you can hear one beep sound and turn to high mist mode.
5. Long press the “MIST” button for 2~3 seconds, and the unit will be turned off.

### **Light button (left side)**

- 1st press: turn the light on and the color will automatically change from red-yellow-green-cyan-blue-purple-white and cycling
- 2nd press: fixed current light
- 3rd press -16th press: change and fix the color (from light red-red-light yellow-yellow-light green-green- light cyan-cyan- light blue-blue-light purple-purple-light white-white)
- 17th press: turn off the light (you also can long press to turn off the light)

## **Bluetooth Mode**

1. The Bluetooth function automatically opens when powered on and with the sound "Power on, Bluetooth mode".
2. Choose "Anko43482269" on your Bluetooth device to connect the aroma diffuser.
3. When successfully paired and connected, a sound will issue with "connected".
4. You can only use your Bluetooth device to control music volume. After the initial pairing, the unit will stay paired unless unpaired\ manually by the user.

### **Note:**

1. Only one Bluetooth device can be connected at one time.
2. Should your device become unpaired or you are not able to connect it, repeat the above

## **Water tank**

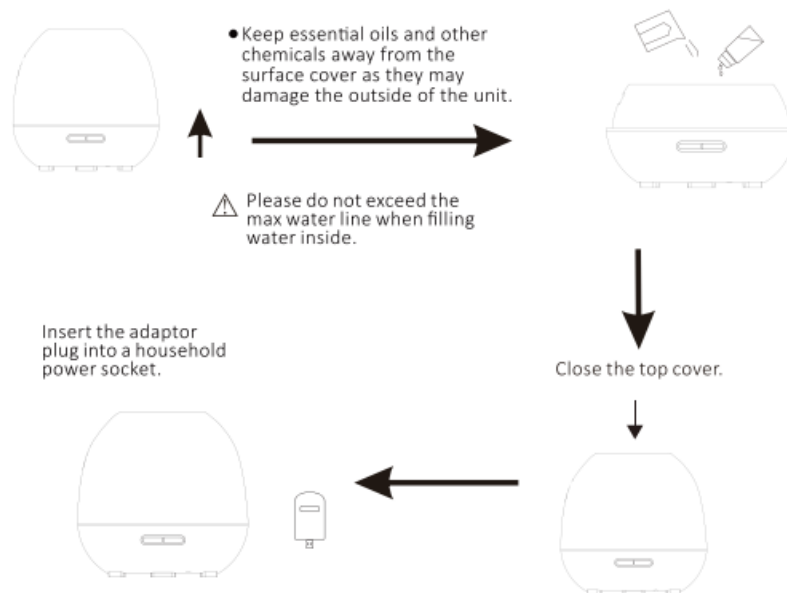
- The machine has a water shortage detector which will automatically power off the unit if water is too low. Please ensure there is always adequate water to avoid damaging the diffuser.

## **Auto shut-off function**

- When water is running out, the unit will switch off. The machine will automatically power off if abnormal overheating is detected.

## **Operation**

- Open the top cover. Add water up to max water level into the water tank then add 2 to 3 drops of essential oil, depending on your preference of more or less fragrance.



## Cleaning and maintenance

The machine should be cleaned after use for 3-5 days continuously, to keep it working normally and extend its lifetime.

1. Unplug the machine before cleaning.
2. Please clean the water tank with a brush and white vinegar or the dilution of detergent and warm water. Other parts of the cover can be cleaned with a soft cloth.
3. Please do not put the whole machine or base into water. The temperature of water cannot be over 40 degrees to clean.
4. When the machine is not used for a long period of time, please pour out the water in the tank and wipe off the drops, then place it in a shady and cool place to avoid direct sunlight.

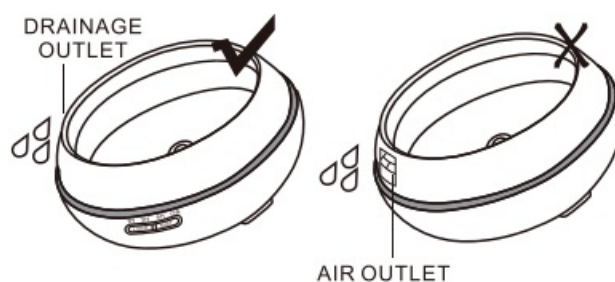
### Caution:

Please do not pour out water through the air outlet as this can damage the inside of the machine.

1. Please clean the tank regularly

## How to pour out the water

To avoid water flowing into the air outlet, Please pour out the water correctly.



### Attention

To prevent loss or no steam from the diffuser, do not add water above the maximum level mark. To prevent melting damage, do not add more than 5 drops of essential oil into the container.

- Do not use as a medical respirator
- Do not use the product when there is an abnormal noise or the user is overheating abnormally.
- Do not cover or block the most outlet or air inlet
- Do not take off the cover during the operation of the diffuser
- Do not place it near an electric device such as a computer, TV, or audio equipment.
- Do not use hot water or mineral water. Always use tap water or distilled water.
- Keep out the reach of children and pets.

## Troubleshooting

If you start the diuser but it doesn't work, please check the following diagnosis

Problems	Possible Reasons	Solution
No electricity, no working.	Power not connected	Connect the power, press the button.
	The power wire is broken or the adapt or burnt out.	Please contact local retailer.
Unable to spray mist or spray is bad	Is the water left low?	Please fill with more water.
	Is there too much water inside the tank?	If the water volume exceeds 400ml (max water line), the mist volume will be minimal.
	Is the ceramic disc dirty?	Please clean the water tank.
	Is the top cover correctly placed?	Please place top cover in the correct sport.
	Is the bottom air inlet dirty?	Please clear away the dust in the bottom air inlet.
The main body is leaking water.	Is the top cover correctly covered?	If the top cover is not correctly covered, the water will splash out and fall onto the machine body or table.
	Condensation water on the body may be caused by low temperature or a humid environment.	please avoid low-temperature and humid environments.

## Warranty

## 12 Month Warranty

Thank you for your purchase.

- Your new product is warranted to be free from defects in materials and workmanship for the period stated above, from the date of purchase, provided that the product is used following accompanying recommendations or instructions where provided. This warranty is in addition to your rights under the Australian Consumer Law.
- For New Zealand customers, this warranty is in addition to statutory rights observed under New Zealand legislation.
- We will provide you with your choice of a refund, repair (where possible) or exchange (availability dependent) for this product if it becomes defective within the warranty period.
- The business will bear the reasonable expense of claiming the warranty.
- This warranty will no longer apply where the defect is a result of alteration, accident, misuse, abuse or neglect.
- Please retain your receipt as proof of purchase and contact our Customer Service Centre as listed below, for the entity you purchased this product from, for any difficulties with your product.
- Warranty claims and claims for expenses
- incurred in returning this product can be addressed to the respective Customer Service Centre.
- Our goods come with guarantees that cannot be excluded under the Australian Consumer Law. You are entitled to a replacement or refund for a major failure and compensation for any other reasonably foreseeable loss or damage.
- You are also entitled to have the goods repaired or replaced if the goods fail to be of acceptable quality and the failure does not amount to a major failure.

## CONTACT

### Contact for Kmart purchases

- Kmart Australia Ltd.
- C/- Customer Service Centre 690 Springvale Road, Mulgrave Vic 3170 Customer Service: 1800 124 125
- (Australia) or 0800 945 995
- (New Zealand) or via Customer Help at [kmart.com.au](https://www.kmart.com.au)

### Contact for Target purchases

- Target Australia Pty Ltd
- C/- Customer Service Centre
- 2 Kendall Street, Williams Landing, Vic, 3027
- Customer Service: 1300 753 567 or via Customer Help at
- [target.com.au/help/contact-us](https://www.target.com.au/help/contact-us)

## Documents / Resources



[anko D71-INTRA-43482269 Speaker Aroma Diffuser](#) [pdf] Instruction Manual  
D71-INTRA-43482269, IM-V2, D71-INTRA-43482269 Speaker Aroma Diffuser, D71-INTRA-43482269, Speaker Aroma Diffuser, Aroma Diffuser, Diffuser

## References

- [User Manual](#)

[Manuals+](#), [Privacy Policy](#)

This website is an independent publication and is neither affiliated with nor endorsed by any of the trademark owners. The "Bluetooth®" word mark and logos are registered trademarks owned by Bluetooth SIG, Inc. The "Wi-Fi®" word mark and logos are registered trademarks owned by the Wi-Fi Alliance. Any use of these marks on this website does not imply any affiliation with or endorsement.