



anko CW2-22125 2 In 1 Bluetooth Portable Speaker User Manual

[Home](#) » [Anko](#) » anko CW2-22125 2 In 1 Bluetooth Portable Speaker User Manual 

anko CW2-22125 2 In 1 Bluetooth Portable Speaker

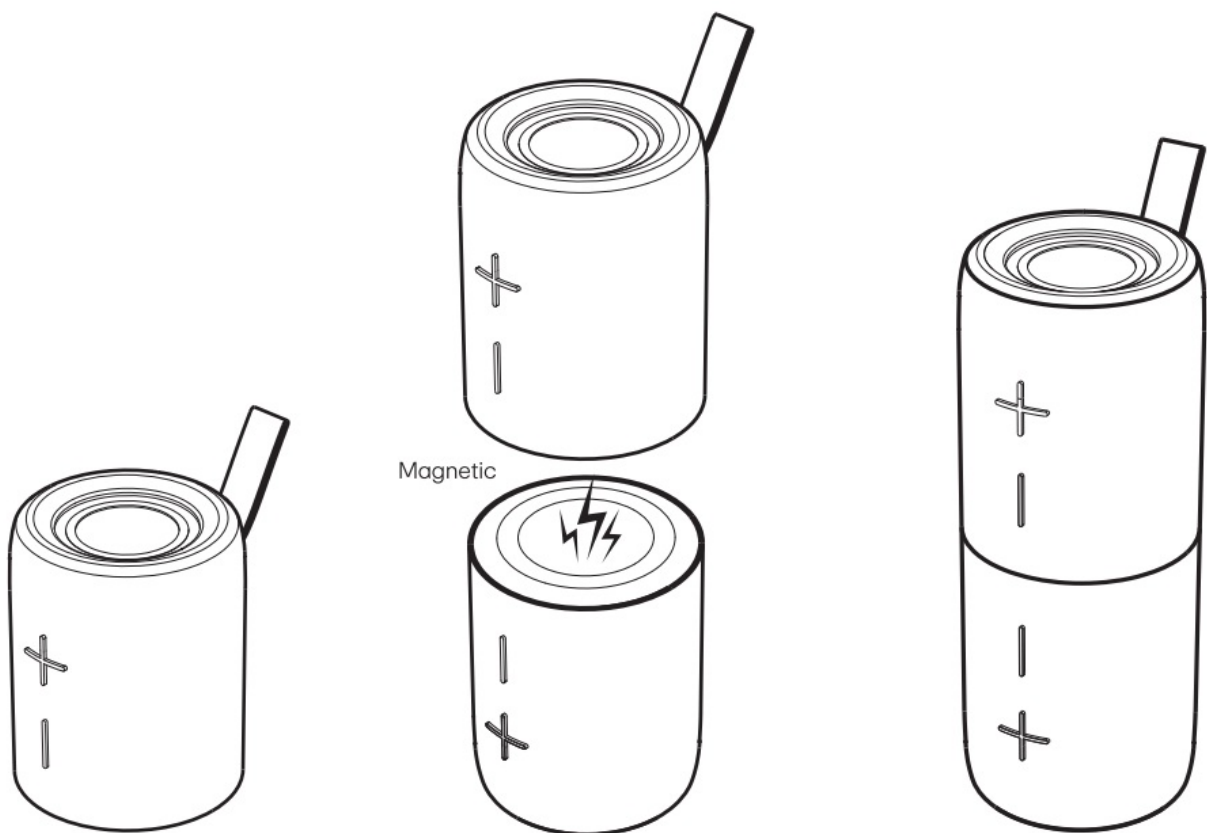


Contents

- 1 Includes
- 2 Function Overview
- 3 How to use this speaker
- 4 Specifications
- 5 Power ON/OFF Button
- 6 Bluetooth Mode
- 7 AUX Function
- 8 TF Card Play
- 9 TWS Pairing
- 10 Charging
- 11 IPXS
- 12 Using the environment & storage environment
- 13 12 month warranty
- 14 Statement
- 15 Customer Support
- 16 Documents / Resources
 - 16.1 References

Includes

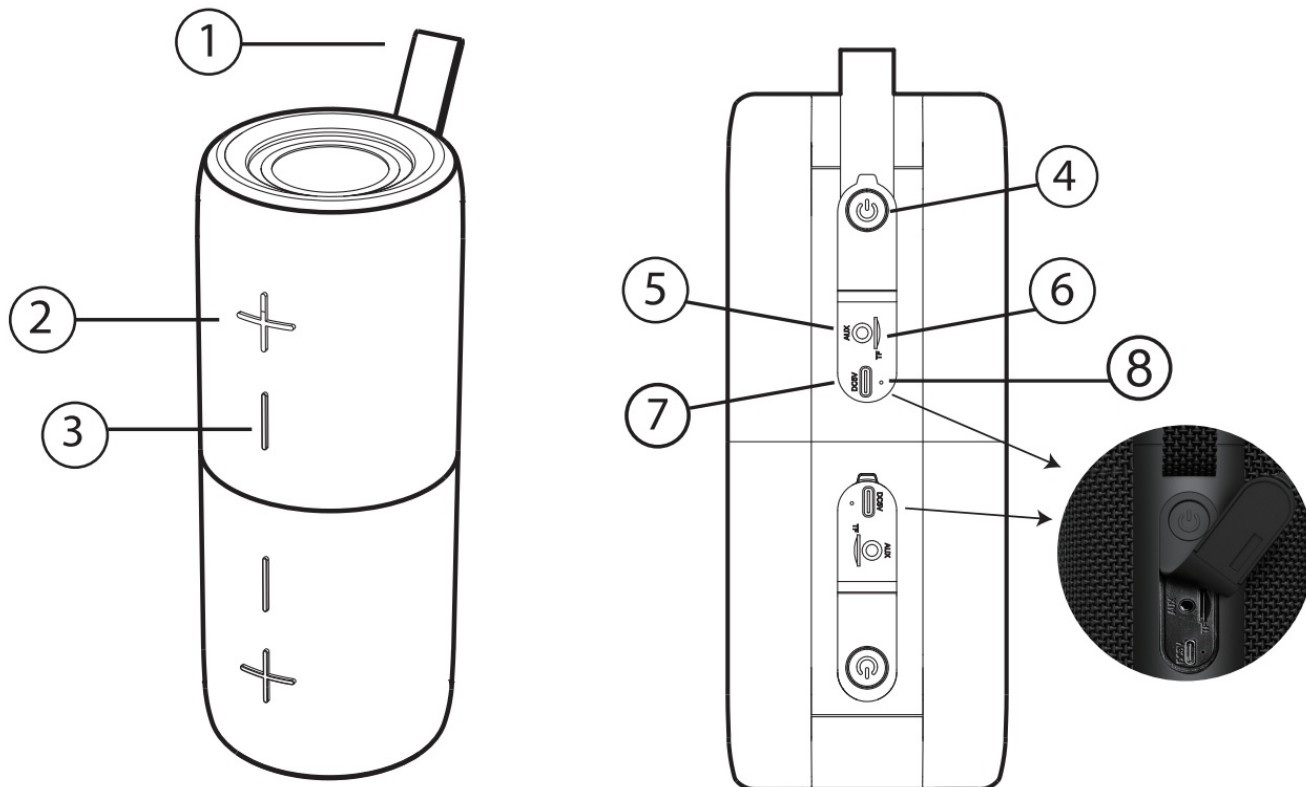
- 2 in 1 Bluetooth Speaker
- USB A to USB C Charging Cable
- User Manual



Function Overview




1. Hand Strap

2. Volume Up/Next Song
3. Volume Down/Previous Song
4. Power ON/ OFF Play/Pause Switch Bluetooth Mode/TF Mode/AUX Mode
5. AUX-IN Port
6. TF Card Slot
7. USB-C Charging Port
8. Charging Indicator



How to use this speaker

Function Operation

- **Pause** Press  button
- **Play** Press  button
- **Volume Up** Press + key to increase the volume
- **Volume Down** Press – to decrease the volume
- **Next Song** Long press + key for 2 seconds to skip the track.
- **Previous Song** Long press – key for 2 seconds to skip the track.
- **Power ON/OFF** Long press  button for 2 seconds.

Specifications

Model no:
CW2-22125

Version:
Bluetooth V5.3

Working distance:

10 Meters

Output:

2 x 4.5W

Music time:

8-10 hours at 80% volume

Charging voltage:

DC= 5V

Battery capacity:

3.7V 1500mAhx2

Charge time:

2-3 Hours

IP Rating:

IPX5

Power ON/OFF Button

- Press and hold ON/OFF button, the blue LED will flash.
- Double click to switch Bluetooth Mode/TF Mode/AUX Mode
- Short press to play/pause music.

Bluetooth Mode

- Once the speaker is powered on, will automatically enter to Bluetooth mode.
- Search for Il anko43421343 11 (bluetooth name) and connect from Bluetooth menu on the media device.
- Once the speaker is successfully paired and connected, you will hear a prompt tone.

AUX Function

- Use a 3.5mm audio cable(not included) to connect your device through the AUX IN port. Choose the music from your media device and play.

TF Card Play

- Insert a TF card into the TF card slot, the speaker will play music automatically \d from the TF card. Supports playback of the following audio formats: WAV/MP3,maximum support 64GB.

TWS Pairing

- Two speakers will automatically enter TWS mode upon powering on. Once two speakers powered on. they will detect each other and pair automatically.

- After successful pairing ,you can search “anko43421343” from source device(eg. smart phone) and connect.
- All actions performed on one speaker are automatically applied on another one speaker. Such as switching songs, volume up/down, Play/Pause and power-off; You also can control the volume up/down, switching songs, Play/Pause from source device(eg. smart phone)
- **Disconnect pairing:**
Long press Volume Up and Volume Down at the same time on either of speakers to disconnect .The remaining BT connected speaker will keep working and the disconnected speaker will go into standby mode.
- **Re- connection after disconnection:**
Long press Volume Up and Volume Down on disconnected speaker to re-enter TWS pairing and re-connect the other speaker automatically (both speakers should be in Bluetooth mode).

Charging

- This Speaker is powered by rechargeable Lithium battery. Please use provided USB C cable for charging (Plug the USB C end to the device charging port and the other USB A end plug into a PC USB port, wall charger or other 5V charging devices.) The LED indicator displays red while charging and light off when fully charged.

IPXS

- Guarantees impermeable protection against rain, snow and spills, preventing water from reaching internal components. If the product is used outdoors where it will be splashed the silicon cover must be closed.

Using the environment & storage environment

- Operating environment
Temperature: -5 ·c~45 ·c
- Storage environment
Temperature: – 20 °C~60 ·c

12 month warranty

Thank you for your purchase.

Your new product is warrantied to be free from defects in materials and workmanship for the period stated above, from the date of purchase. provided that the product is used in accordance with accompanying recommendations or instructions where provided. This warranty is in addition to your rights under the Australian Consumer Law. For New Zealand customers, this warranty is in addition to statutory rights observed under New Zealand legislation.

We will provide you with your choice of a refund, repair (where possible) or exchange (availability dependent) for this product if it becomes defective within the warranty period.
The business will bear the reasonable expense of claiming the warranty. This warranty will no longer apply where the defect is a result of alteration, accident, misuse, abuse or neglect.

Please retain your receipt as proof of purchase and contact our Customer Service Centre as listed below, for the entity you purchased this product from, for any difficulties with your product. Warranty claims and claims for expense incurred in returning this product can be addressed to the respective Customer Service Centre.

Our goods come with guarantees that cannot be excluded under the Australian Consumer Low. You ore entitled to a replacement or refund for a major failure and compensation for any other reasonably foreseeable loss or damage. You are also entitled to have the goods repaired or replaced if the goods fail to be of acceptable quality and the failure does not amount to a major failure.

Statement

- This product shall not be connected to power supply source exceeding PS1 (5V d.c. 1A).
- Battery cannot be subjected to high or low extreme temperatures. low air pressure at high altitude during use, storage or transportation.
- Disposal of a battery into fire or a hot oven. or mechanically crushing or cutting of a battery, that con result in on explosion.
- leaving a battery in on extremely high temperature surrounding environment that con result in on explosion or the leakage of flammable liquid or gas.
- A battery subjected to extremely low air pressure that may result in on explosion or the leakage of flammable liquid or gas.
- The apparatus is only suitable for mounting at height < 2m.
- The marking located on the bottom of the apparatus.



The Bluetooth® word mark and logos ore registered trademarks owned by Bluetooth® SIG. Inc ., and any use of such marks by KMART AUSTRALIA Is under Licence.

Customer Support

Contact for Kmart purchases	Contact for Target purchases
Kmart Australia Ltd. C/- Customer Service Centre 690 Springvale Rood, M ulgrove Vic 3170 Customer Service: 1800 t24 125 (Australia) or 0800 945 995 (New Zealand) or via Customer Help at kmart .com.au	Target Australia Pty Ltd C/- Customer Service Centre 2 Kendall Street, William s Landing, Vic, 3027 Customer Service: 1300 753 567 or via Customer He lp at target.cam.au/help/contact-us



Documents / Resources

	anko CW2-22125 2 In 1 Bluetooth Portable Speaker [pdf] User Manual CW2-22125, CW2-22125 2 In 1 Bluetooth Portable Speaker, 2 In 1 Bluetooth Portable Speaker, Bluetooth Portable Speaker, Portable Speaker, Speaker
--	---

References

- [User Manual](#)

[Manuals+](#), [Privacy Policy](#)

This website is an independent publication and is neither affiliated with nor endorsed by any of the trademark owners. The "Bluetooth®" word mark and logos are registered trademarks owned by Bluetooth SIG, Inc. The "Wi-Fi®" word mark and logos are registered trademarks owned by the Wi-Fi Alliance. Any use of these marks on this website does not imply any affiliation with or endorsement.