



ANKEWAY LightBox Wireless CarPlay Adapter User Manual

[Home](#) » [ANKEWAY](#) » ANKEWAY LightBox Wireless CarPlay Adapter User Manual 

Contents

- 1 ANKEWAY LightBox Wireless CarPlay Adapter
- 2 How to Connect for the Wireless CarPlay
 - 2.1 Special Note
- 3 How to Connect for the Wireless AirPlay
 - 3.1 Special Note
- 4 OTA Online Upgrade Method
 - 4.1 Special Note
- 5 Documents / Resources
 - 5.1 References
- 6 Related Posts

ANKEWAY

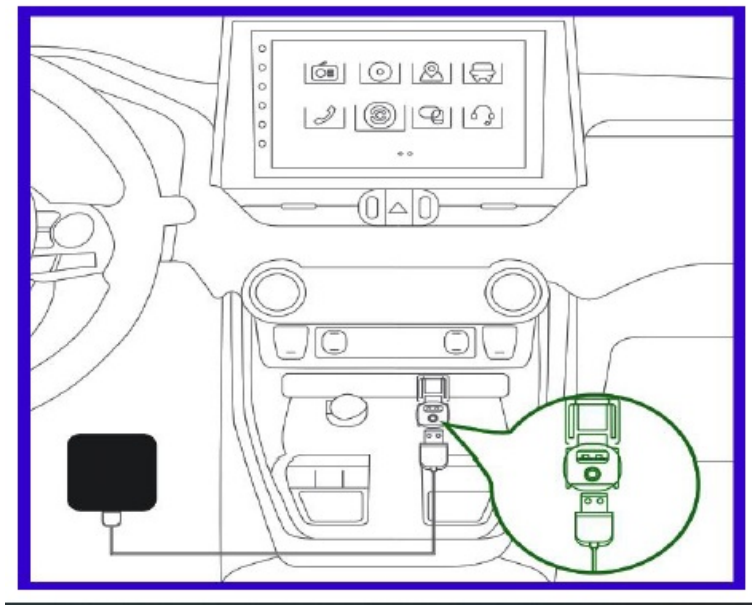
ANKEWAY LightBox Wireless CarPlay Adapter



How to Connect for the Wireless CarPlay

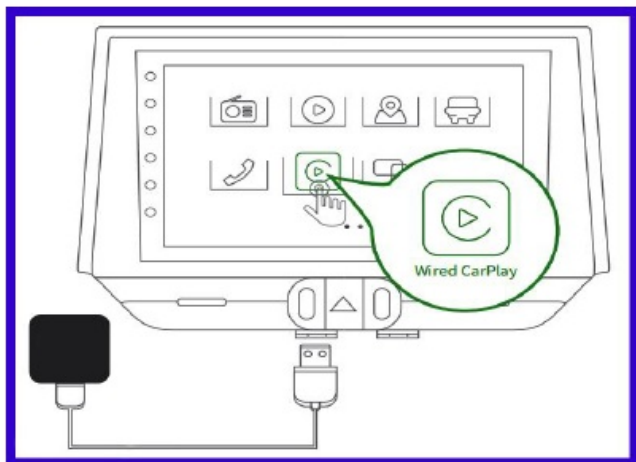
Step 1, Connect the Light Box with Your Car.

- Start your car and insert the Light Box into the USB or Type-C port of the original car.
- Make sure that The Light Box is connected to the USB or Type-C interface of the original car screen with the iPhone interconnection function.



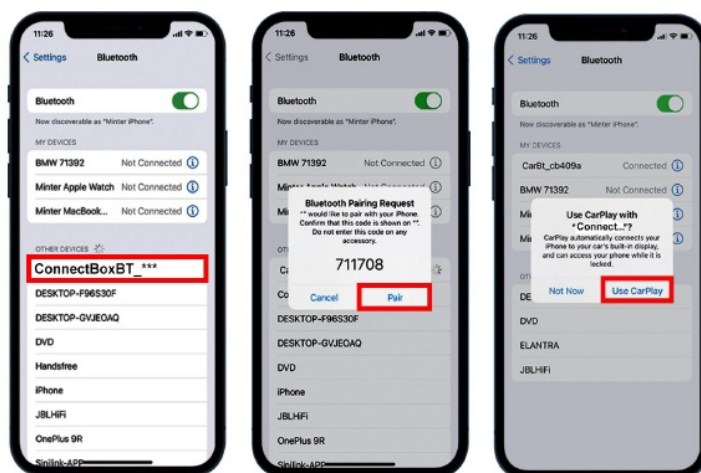
Step 2, Identify the Light Box

- Click the wired CarPlay icon on the car screen to enter the CarPlay function to identify the Light Box, then you will see the page "Welcome to Wireless CarPlay".
- If the welcome page is not displayed, it may need to be upgraded or it is not compatible with your car. Please contact ANKEWAY Team for a perfect solution.



Step 3, Bluetooth Pairing

- Turn on both the Bluetooth and WiFi on your iPhone after you see the “Welcome to Wireless CarPlay”.
- Disconnect the Bluetooth and WiFi between your iPhone and car before pairing.
- Use your iPhone to search for the Bluetooth “ConnectBoxBT_***” for pairing (Only Bluetooth, Not WiFi). It usually takes 5-15 seconds (It depends on your iPhone and car). Just enjoy the wireless CarPlay after the only one-time pairing.



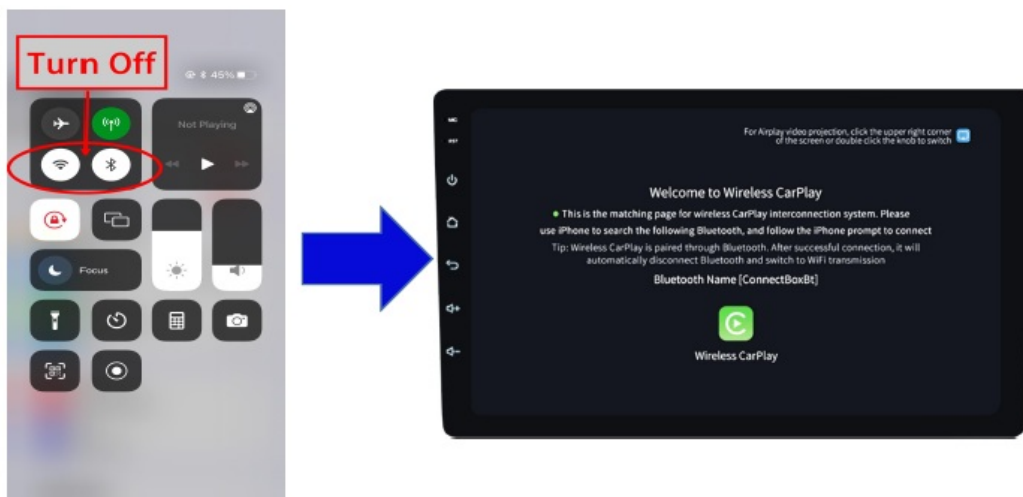
Special Note

- Before the Light Box is paired and used, Make sure to disconnect the Bluetooth and WiFi between your iPhone and the original car screen to avoid interference.
- Please use your iPhone search “ConnectBoxBt_***” for Bluetooth pairing, and follow the iPhone prompts to connect. (Only Bluetooth, Not WiFi)
- If you have any questions about connecting this Light Box, please contact ANKEWAY technical support team for a solution.

How to Connect for the Wireless AirPlay

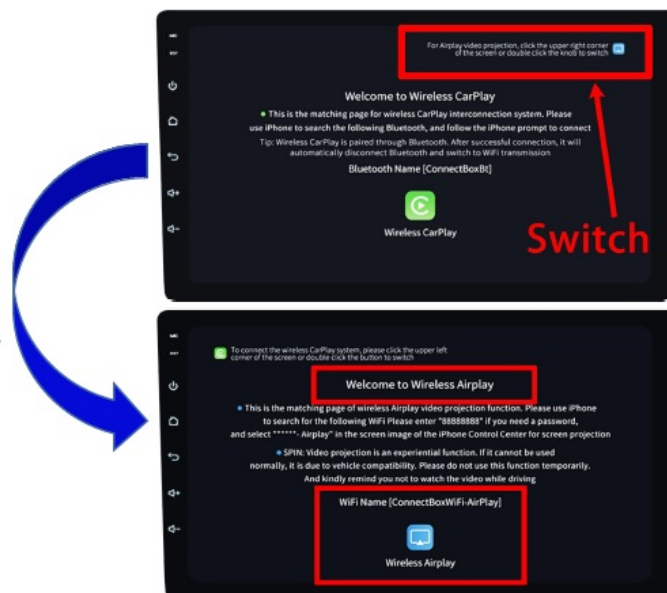
Step 1, Turn Off Bluetooth & WiFi On Your iPhone

- First of all, turn off both the Bluetooth and WiFi on your iPhone to exit CarPlay work mode.



Step 2, Switch to “Welcome to Wireless AirPlay”

- Click the icon in the upper right corner of the welcome page on the car screen to switch to “Welcome to Wireless AirPlay”.



Special Note

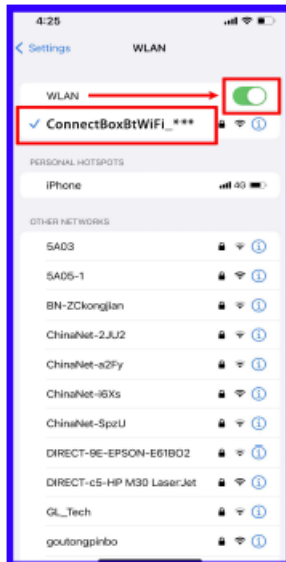
- The Wireless AirPlay is an experience function. If the screen cannot be cast or the screen is black, it is a compatibility issue. Please don't use this function for now.
- You can also contact ANKEWAY technical support team for solutions such as upgrades.
- Do Not Watch Videos While Driving.

OTA Online Upgrade Method

Step 1, Make Sure the WiFi Is Connected

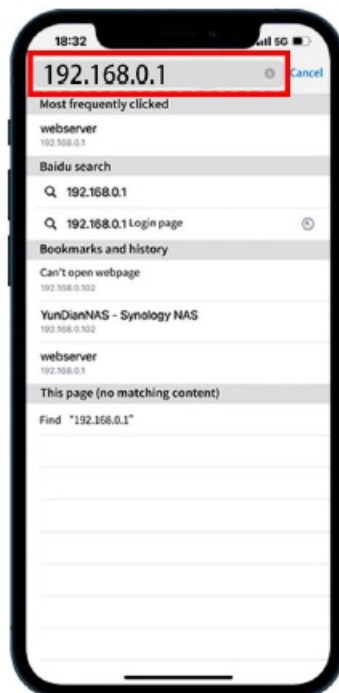
- Before the OTA upgrade in the car, make sure that the wireless connection function of the Light Box and your iPhone is normal (that is make sure the WiFi is connected between iPhone and the Light Box).
- You can also upgrade the Light Box even at home, only a phone charger is needed to power the Light Box,

then connect your iPhone WiFi with the Light Box. (WiFi Name: ConnectBoxBtWiFi_***, Password: 88888888).

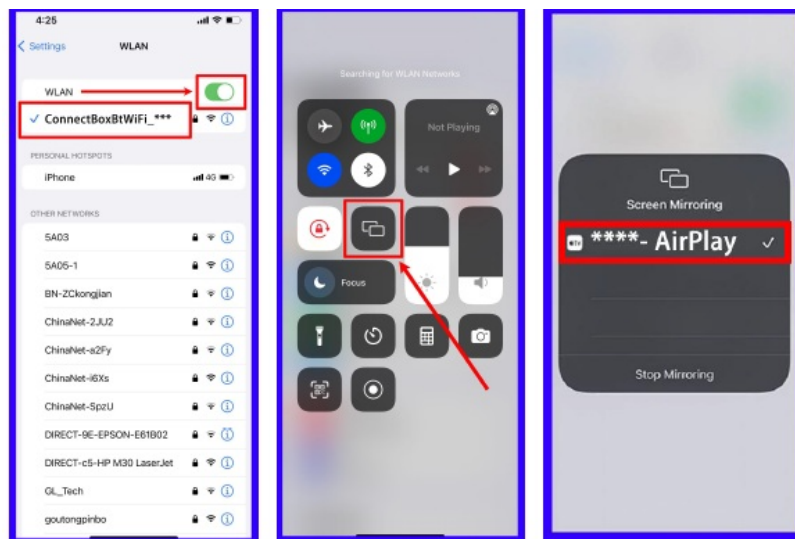


Step 2, Enter the Upgrade Page

- Enter the IP address 192.168.0.1 in your iPhone browser, and press Enter to the upgrade page.



Step 3, Check the Latest Version and Upgrade



Special Note

- Do not turn off your car or unplug the Light Box during the upgrade.
- If the upgrade is abnormal, it is recommended to turn off the car, then restart the car, and unplug & plug the Light Box to upgrade again.
- If you have any questions about connecting, using and upgrading this device, please contact ANKEWAY technical support team to get a solution.

Documents / Resources

<p>ANKEWAY</p> <p>User Manual (English)</p> <p>Manuale D'uso (Italiano)</p> <p>Light Box</p>	<p>ANKEWAY LightBox Wireless CarPlay Adapter [pdf] User Manual</p> <p>LightBox, Wireless CarPlay Adapter, LightBox Wireless CarPlay Adapter, CarPlay Adapter, Adapter</p>
---	---

References

[Manuals+.](#)