

Contents [[hide](#)]

- [1 Anker SOLIX Generator Input Adapter](#)
- [2 Specifications](#)
- [3 What's in the Box](#)
- [4 Overview](#)
- [5 Anker App for Smart Control](#)
- [6 Transfer Delay and Start-Up Delay](#)
- [7 FAQs](#)
- [8 Documents / Resources](#)
 - [8.1 References](#)



Anker SOLIX Generator Input Adapter

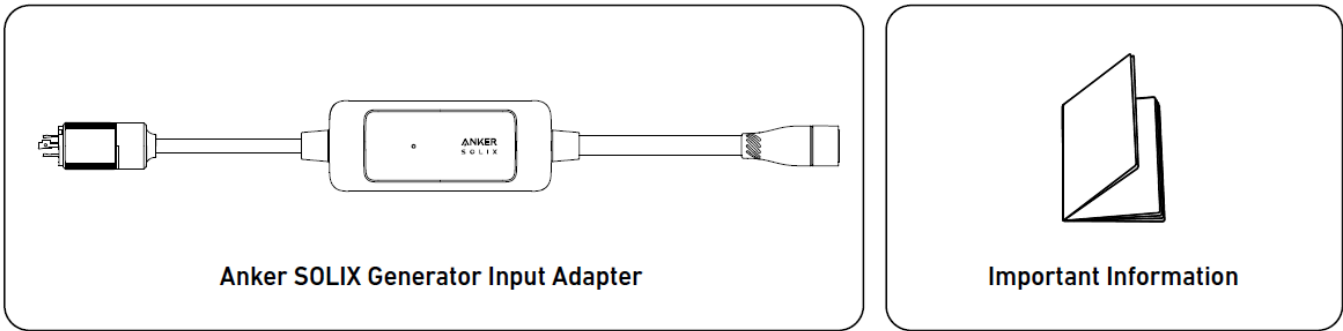


Specifications

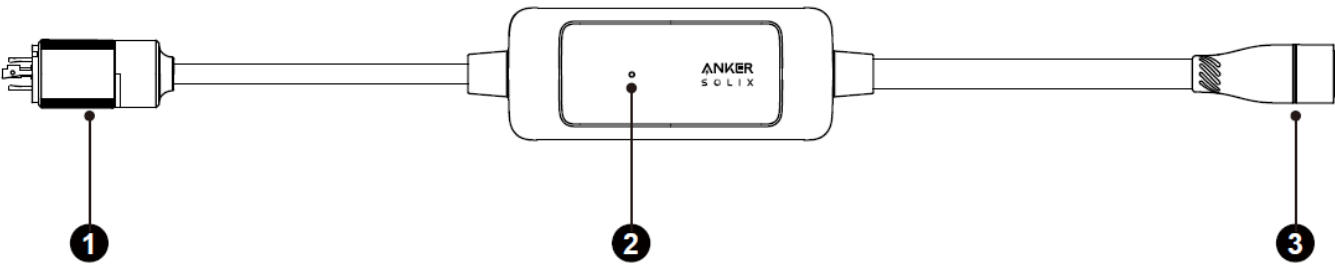
Rated AC Input / Output	120V/240V, 60Hz, 25A Max (< 3hrs), 6000W Max/24A Max (continuous), L1+L2+N+PE
Total Length	6.6 ft / 2 m
Normal Operation Temperature Range	-4°F to 104°F / -20°C to 40°C
Warranty	2 Years

Note: The applicable electrical frequency of this product is 60Hz, and the electrical system is L1+L2+N+PE. Do not use an electrical system that does not meet the applicable conditions of this product.

What’s in the Box



Overview



- 1. NEMA L14-30P Port
- 2. Status Indicator
- 3. Home Power Panel Port

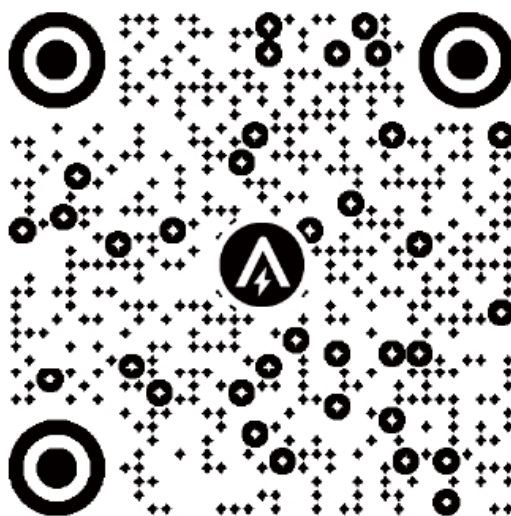


- Anker SOLIX Generator Input Adapter is only available for Anker SOLIX F3800 Plus Portable Power Station and Anker SOLIX Home Power Panel. Do not connect the adapter directly to the grid.
- When the Anker SOLIX Generator Input Adapter is connected to the Anker SOLIX F3800 Plus Portable Power Station, the NEMA 5- 20R AC output ports on the power station will be disabled.
- The applicable electrical frequency of the adapter is 60Hz, and the electrical system is L1+L2+N+PE. Do not use an electrical system that does not meet the applicable conditions of this product.


Anker App for Smart Control

Download the App

Search “Anker” and download the Anker app via App Store or Google Play. Scan the QR code below to go to the corresponding application store.

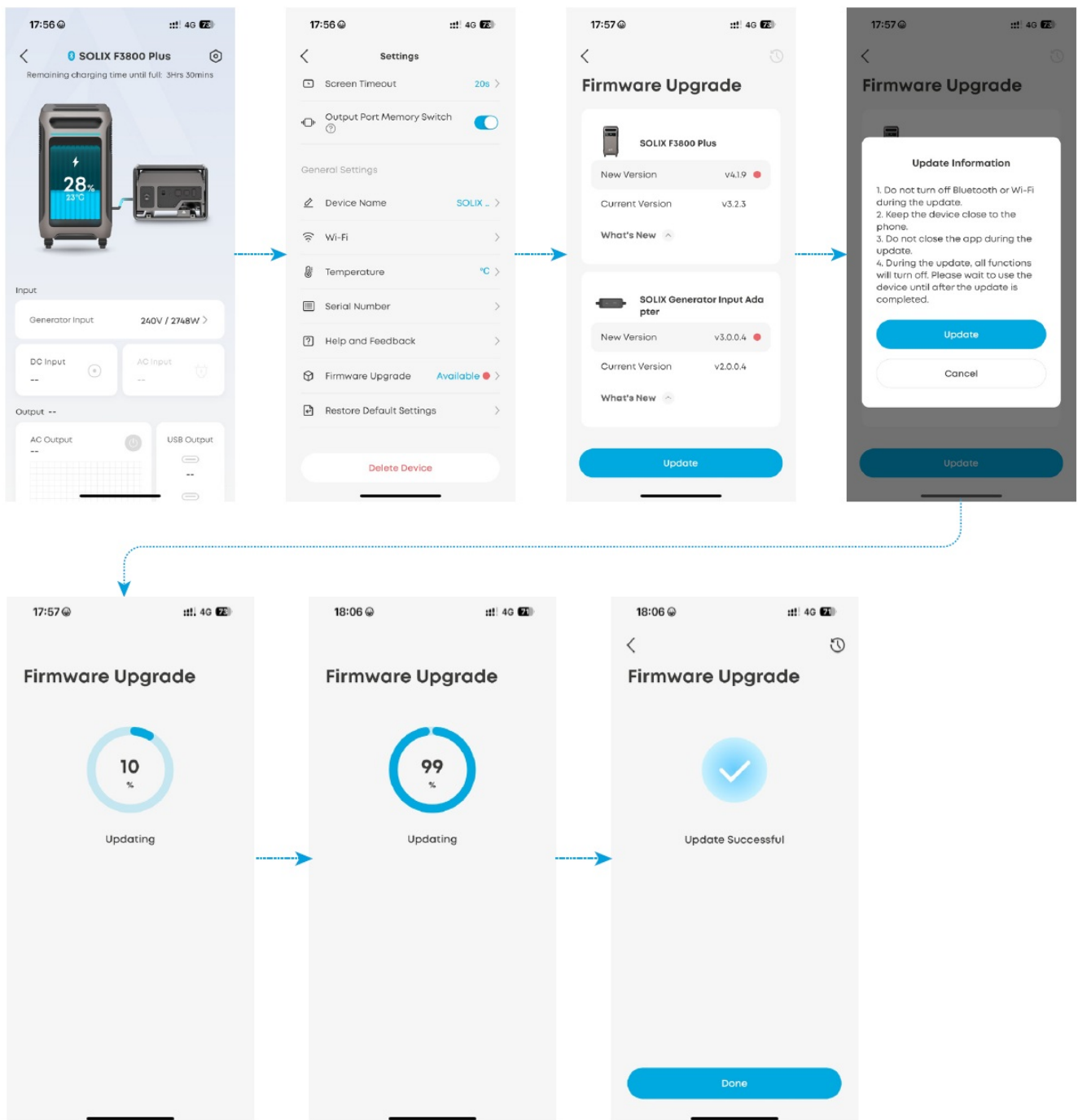


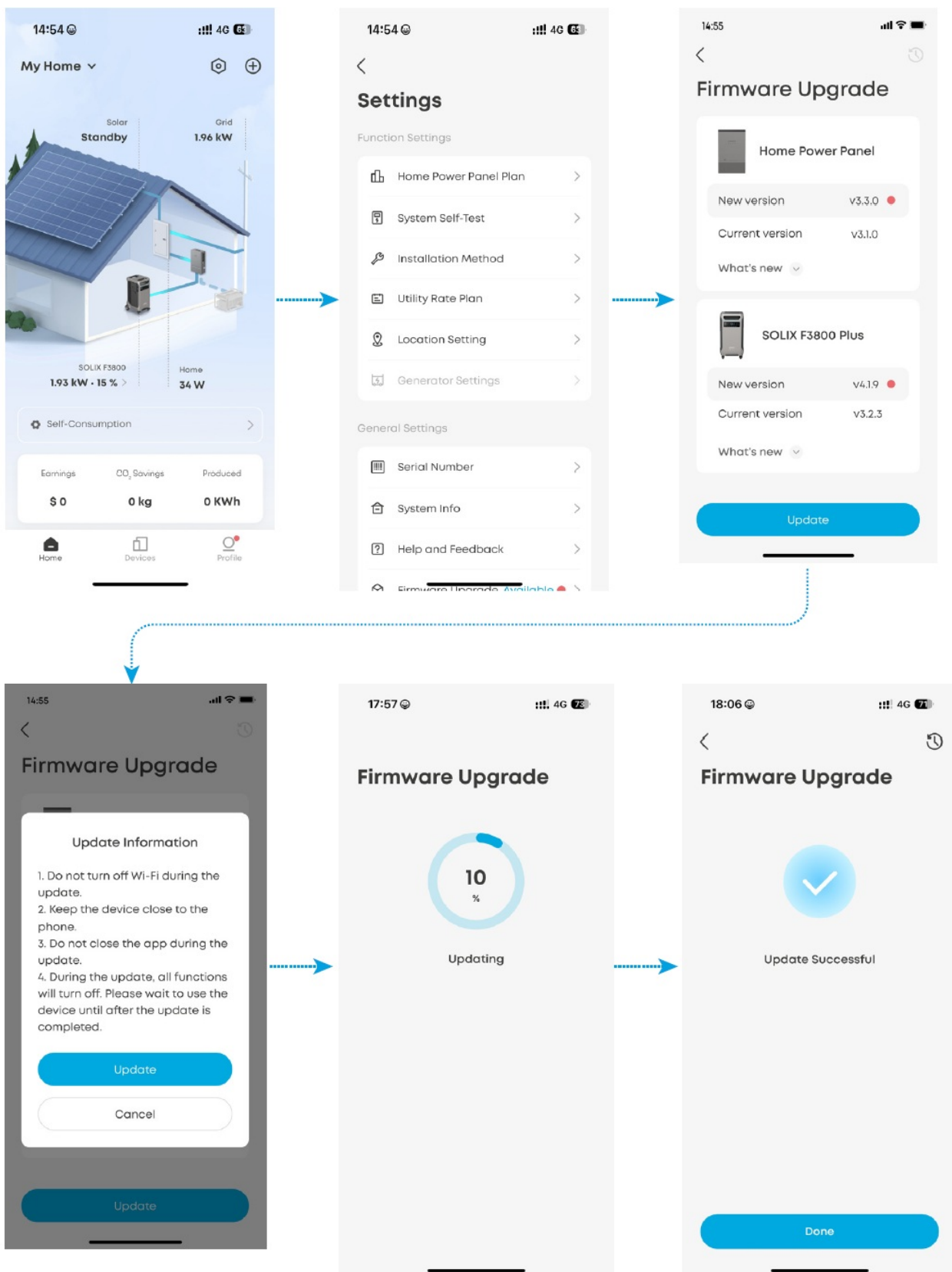
Firmware Upgrade

1. Navigate to the Firmware Upgrade page via the Settings menu.
2. A red dot will appear to indicate that a new firmware version is available.
3. Click the red dot to start the upgrade process.
4. Follow the in-app instructions to complete the firmware upgrade.
5.  Anker SOLIX F3800 Plus Portable Power Station and Home Power Panel must be connected to a stable Wi-Fi network.
6. Ensure the battery level of the Anker SOLIX F3800 Plus Portable Power Station is

at least 5%.

7. The Anker SOLIX Generator Input Adapter must be connected to the Anker SOLIX F3800 Plus Portable Power Station to perform firmware updates.





Transfer Delay and Start-Up Delay

- Having a start-up delay can be useful to prevent the generator from starting up during momentary power outages or brownouts.
- The start-up delay of the Anker SOLIX Generator Input Adapter is 2 seconds.
- However, it's important to note the transfer delay, which is the time it takes for the

power to switch from the utility to the generator.

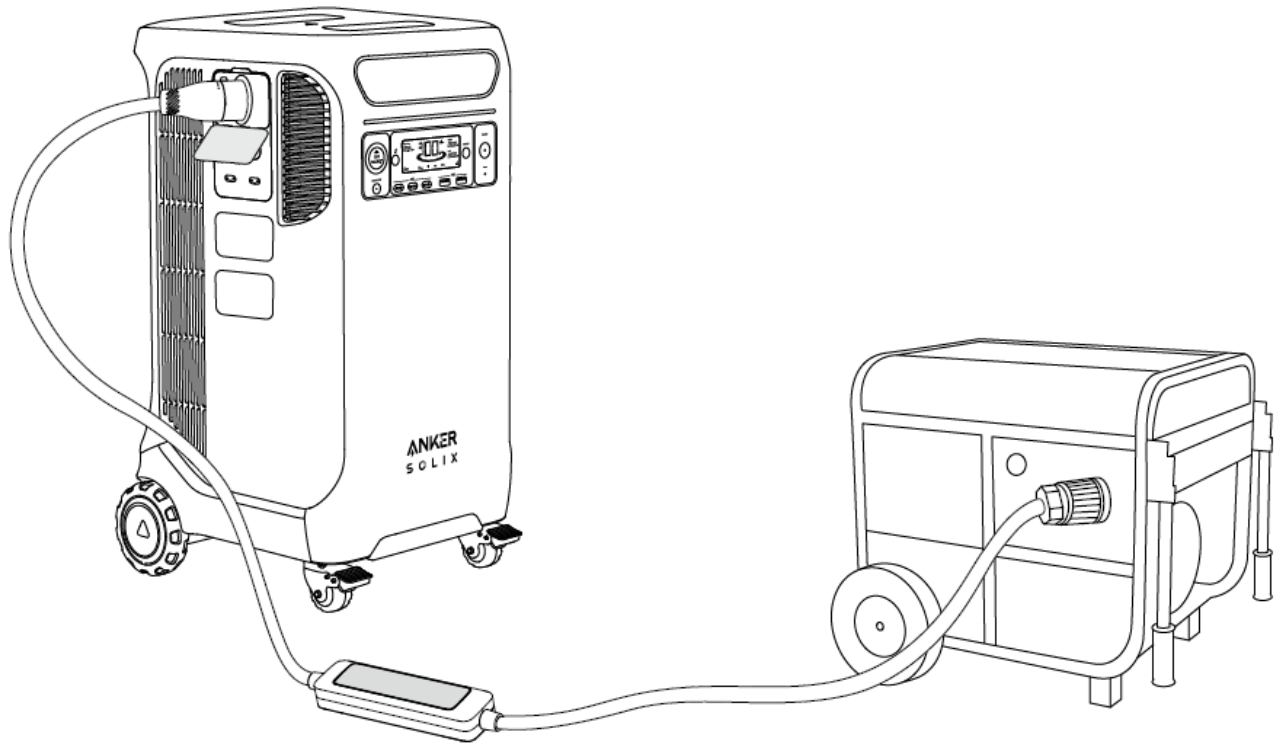
- The transfer delay of the Anker SOLIX Generator Input Adapter is 50 ms.

Using with Anker SOLIX F3800 Plus Portable Power Station

When charging the Anker SOLIX F3800 Plus Portable Power Station with a generator, you can use the Anker SOLIX Generator Input Adapter.

Connecting with the Anker SOLIX F3800 Plus Portable Power Station and Generator

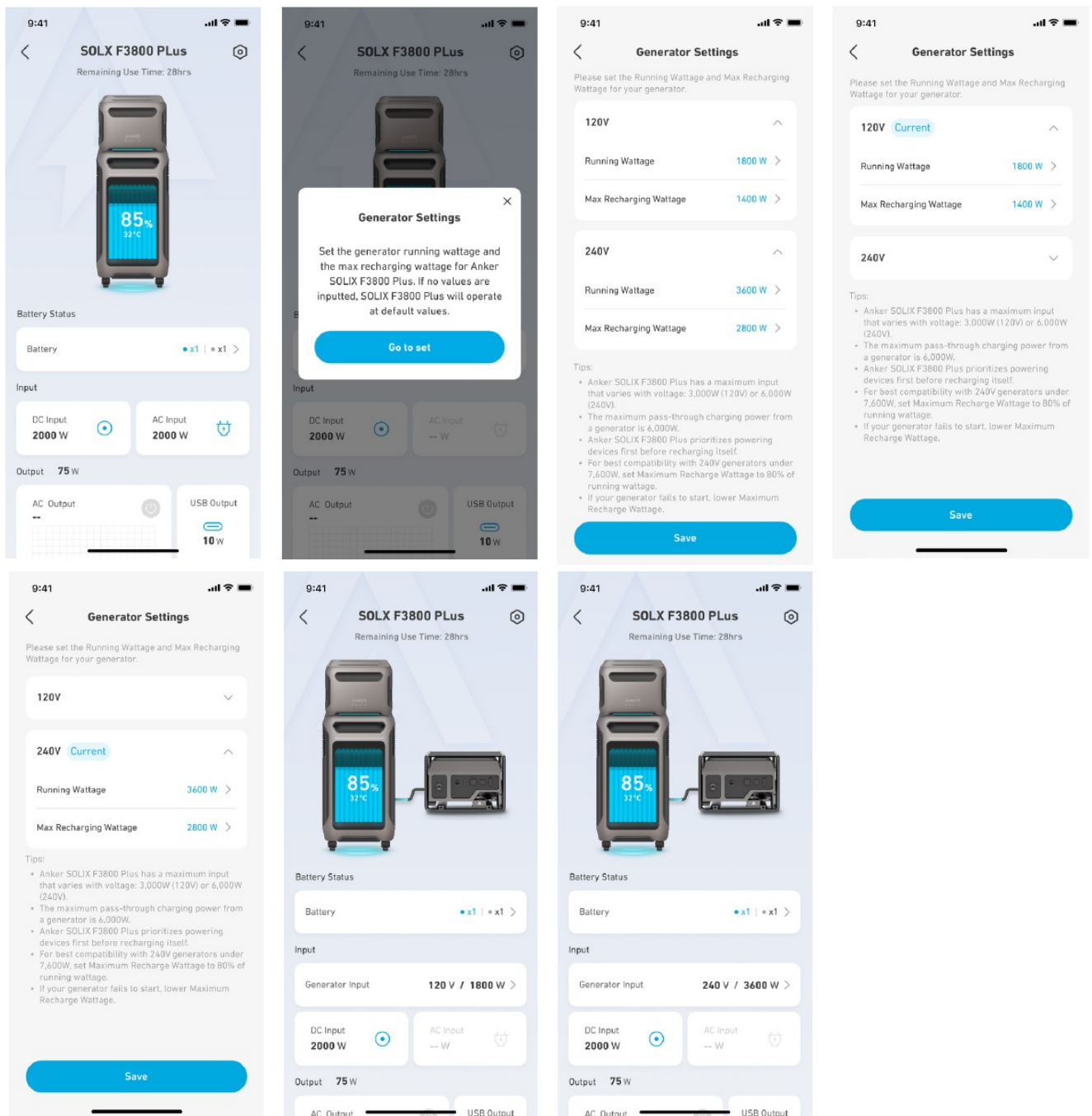
1. Turn off the generator.
2. Connect the Anker SOLIX Generator Input Adapter with the Anker SOLIX F3800 Plus Portable Power Station via the Home Power Panel port.
3. Connect the Anker SOLIX Generator Input Adapter with the generator via the NEMA L14-30P port.
4. Turn on the generator. The status indicator of the Anker SOLIX Generator Input Adapter will be white if it works normally.
5. If the generator is 120V, you need to purchase a TT-30 to L14-30R adapter to connect with the Anker SOLIX Generator Input Adapter. Only the NEMA TT-30R port of the power station can be used.
6. After connecting the 240V Generator, one Anker SOLIX F3800 Plus recharges at a maximum power of 3,300W; if Anker.
7. SOLIX F3800 Plus is connected to expansion batteries, recharging power can be up to 6,000W.



Setting Up the App with Anker SOLIX F3800 Plus Portable Power Station

Before using the Anker SOLIX Generator Input Adapter, please check and ensure that the firmware of the Anker SOLIX F3800 Plus Portable Power Station and the Anker SOLIX Generator Input Adapter have been updated to the latest version.

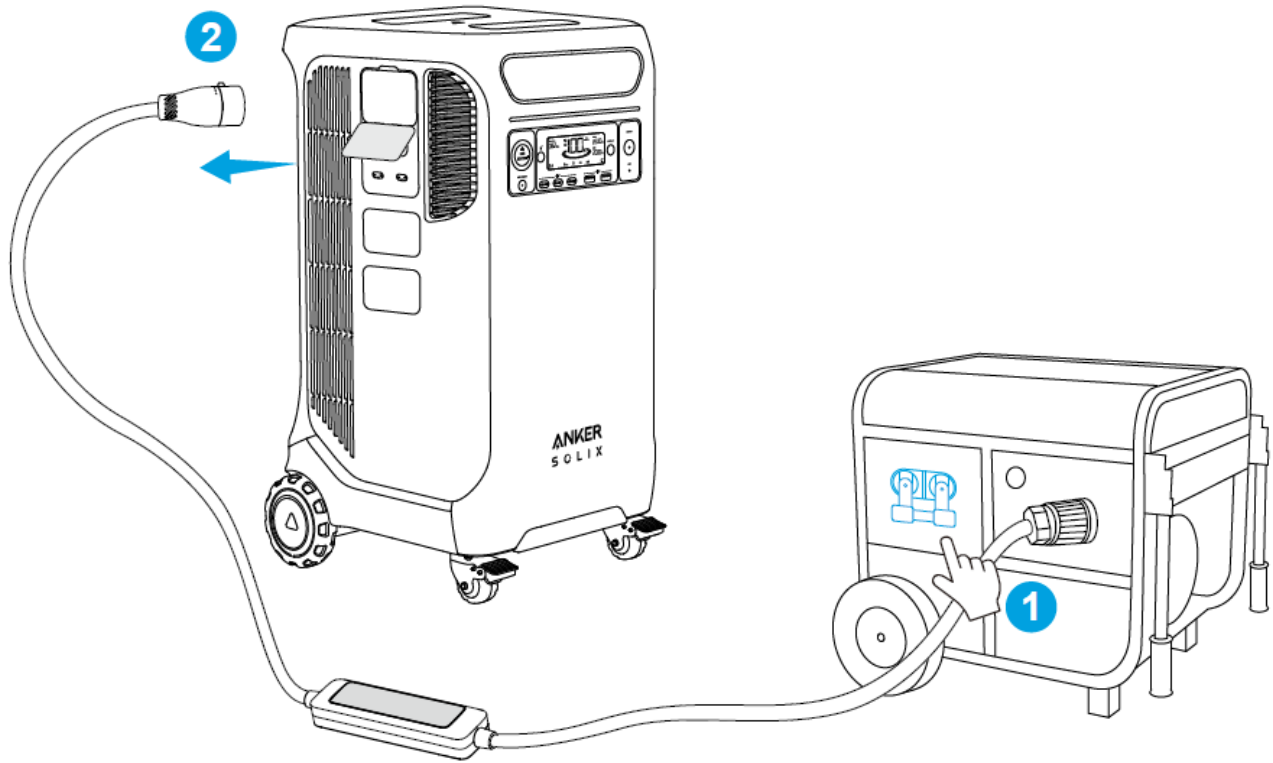
1. Keep a good quality Wi-Fi signal strength and do not place the power station too far away from the router.
2. Add Anker SOLIX F3800 Plus Portable Power Station in the app.
3. When using the Anker SOLIX Generator Input Adapter with the Anker SOLIX F3800 Plus Portable Power Station for the first time, set the generator's running wattage and max recharging wattage in the app.
4. Otherwise, the generator will charge the power station with default values.
5. The generator can charge the Anker SOLIX F3800 Plus Portable Power Station while supplying power to the load. The maximum input of the power station is 3,000W (120V) or 6,000W (240V). It varies with the voltage.
6. The maximum pass-through charging power from a generator is 6,000W.



Disconnecting from the Anker SOLIX F3800 Plus Portable Power Station and the Generator

Turning off the generator directly may cause a power outage for several seconds. Please follow the steps below to avoid power disruptions.

1. Turn off the AC breaker of the generator.
2. Disconnect the Anker SOLIX Generator Input Adapter from the Anker SOLIX F3800 Plus Portable Power Station.



Using with Anker SOLIX Home Power Panel

When charging the Anker SOLIX Home Power Panel with a 240V generator, you can use the Anker SOLIX Generator Input Adapter. Connecting with the Anker SOLIX Home Power Panel and a 240V Generator.

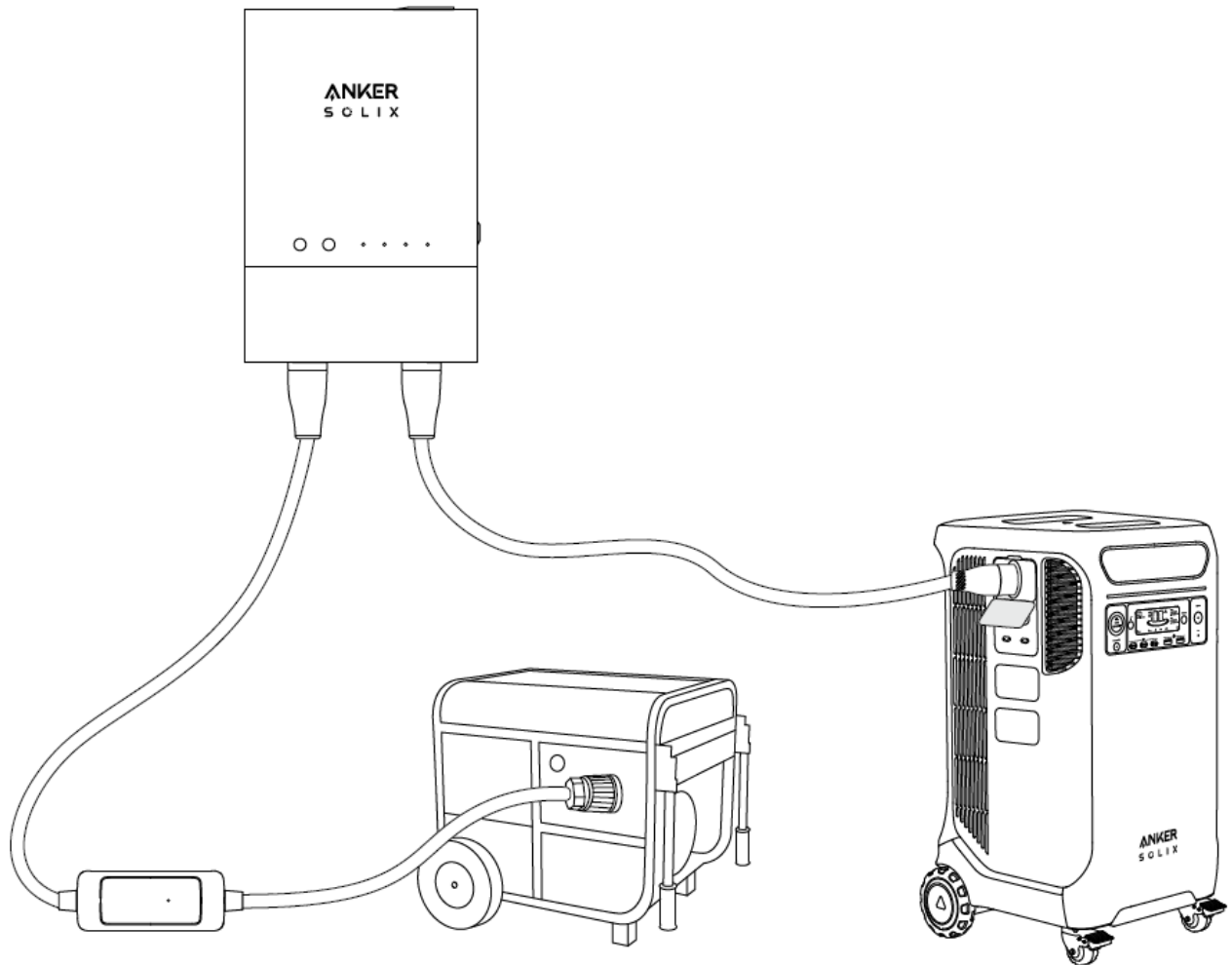
Warning

- Anker SOLIX Generator Input Adapter cannot be used while the grid is operating. If the adapter is used, the status indicator will be red.
- Before connecting the Anker SOLIX Generator Input Adapter to the Anker SOLIX Home Power Panel, ensure that its firmware has been updated to the latest version.
- If it has not been updated yet, first connect the Anker SOLIX Generator Input.

Adapter to F3800 Plus Portable Power Station, then update the firmware of both the adapter and the power station to the latest version.

1. Turn off the 240V generator and the circuit breaker that controls the Home Power Panel port connected to the Anker SOLIX Generator Input Adapter.
2. Connect the Anker SOLIX Generator Input Adapter with the Anker SOLIX Home Power Panel via the Home Power Panel port.

3. Connect the Anker SOLIX Generator Input Adapter to the generator via the NEMA L14-30P port. If the generator's output port is NEMA L14-50, purchase a NEMA L14-30R to L14-50P adapter to connect with the Anker SOLIX Generator Input Adapter.
4. Turn on the generator and circuit breaker. The status indicator of the Anker SOLIX Generator Input Adapter should be white, indicating normal operation.
5. When the Anker SOLIX Home Power Panel is connected to the Anker SOLIX F3800 Plus Portable Power Station and a 240V generator, excess generator power output can charge the power station.

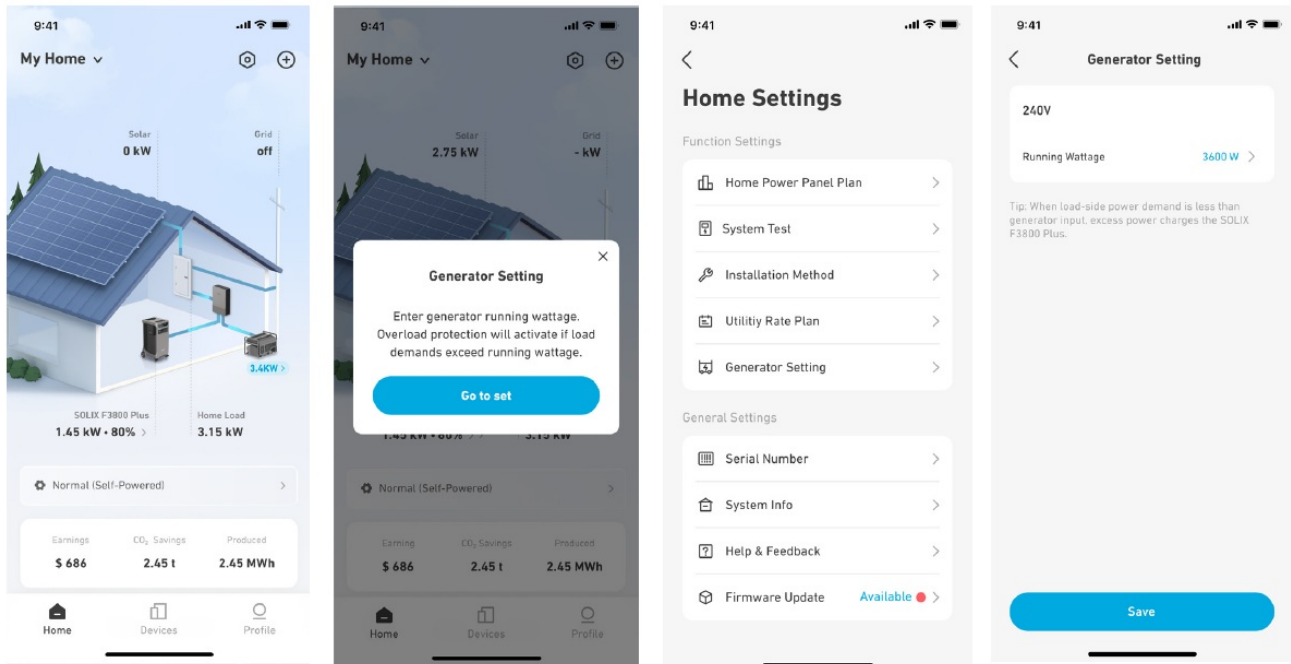


Setting Up the App with Anker SOLIX Home Power Panel

Before using the Anker SOLIX Generator Input Adapter, ensure the firmware of the Anker SOLIX Home Power Panel has been updated to the latest version.

1. Keep a good quality Wi-Fi signal strength and do not place the Home Power Panel too far away from the router.
2. Add the Anker SOLIX Home Power Panel in the app.
3. When using the Anker SOLIX Generator Input Adapter with the Anker SOLIX Home Power Panel for the first time, please set the generator running wattage in the app.

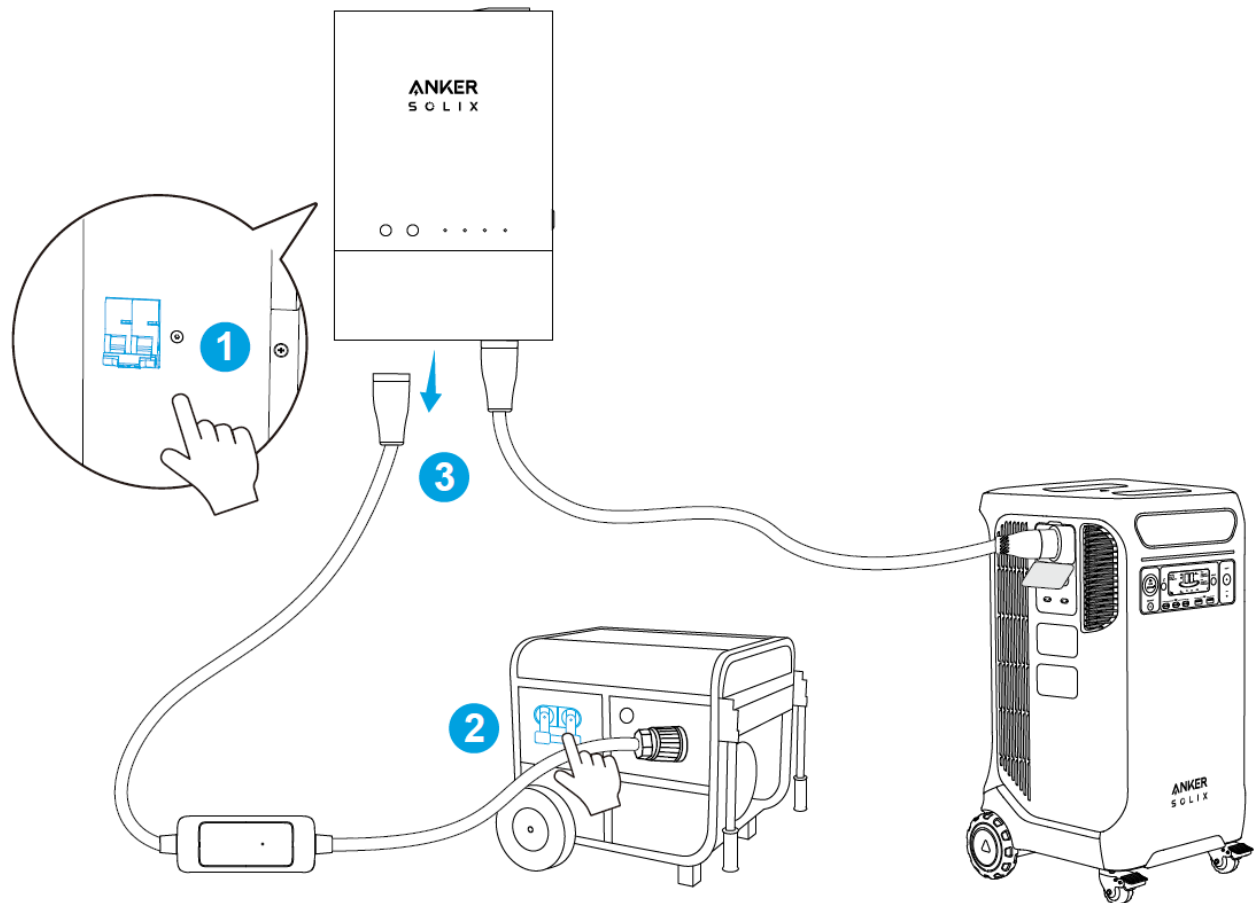
4. The maximum input of the Home Power Panel is 6,000W. If the running wattage of the generator exceeds 6,000W, the Home Power Panel will work at 6,000W.



Disconnecting from the Anker SOLIX Home Power Panel and a 240V Generator

Turning off the generator directly may cause a power outage for several seconds. Please follow the steps below to avoid power disruptions.

1. Turn off the circuit breaker connected to the Anker SOLIX Generator Input Adapter, located on the Home Power Panel.
2. Turn off the AC breaker of the generator.
3. Disconnect the Anker SOLIX Generator Input Adapter from the Home Power Panel.



FAQs

Q1: Is the Anker SOLIX Generator Input Adapter compatible with the Anker SOLIX F3800 Portable Power Station?

No, the Anker SOLIX Generator Input Adapter can only work with the Anker SOLIX F3800 Plus Portable Power Station and the Anker SOLIX Home Power Panel.

Q2: How do I connect the Anker SOLIX Generator Input Adapter to the Anker SOLIX Home Power Panel?

Connect the Anker SOLIX Generator Input Adapter to any port at the bottom of the Home Power Panel. When there is a power outage, turn on the generator, and it will power the backup loads. If the Anker SOLIX F3800 Plus Portable Power Station is connected to another Home Power Panel port, the generator will also charge the power station.

Documents / Resources

Search:

e.g. whirlpool wrf535swhz

Search

[Manuals+](#) | [Upload](#) | [Deep Search](#) | [Privacy Policy](#) | [@manuals.plus](#) | [YouTube](#)

This website is an independent publication and is neither affiliated with nor endorsed by any of the trademark owners. The "Bluetooth®" word mark and logos are registered trademarks owned by Bluetooth SIG, Inc. The "Wi-Fi®" word mark and logos are registered trademarks owned by the Wi-Fi Alliance. Any use of these marks on this website does not imply any affiliation with or endorsement.