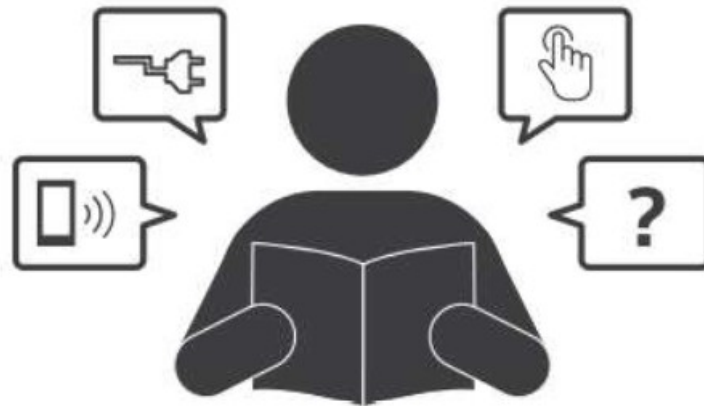




ankbit RT5013 Wireless Transmitter and Receiver User Manual

[Home](#) » [ankbit](#) » ankbit RT5013 Wireless Transmitter and Receiver User Manual 

Ankbit



**Wireless
Transmitter and Receiver
User Manual
Model: B06T2**

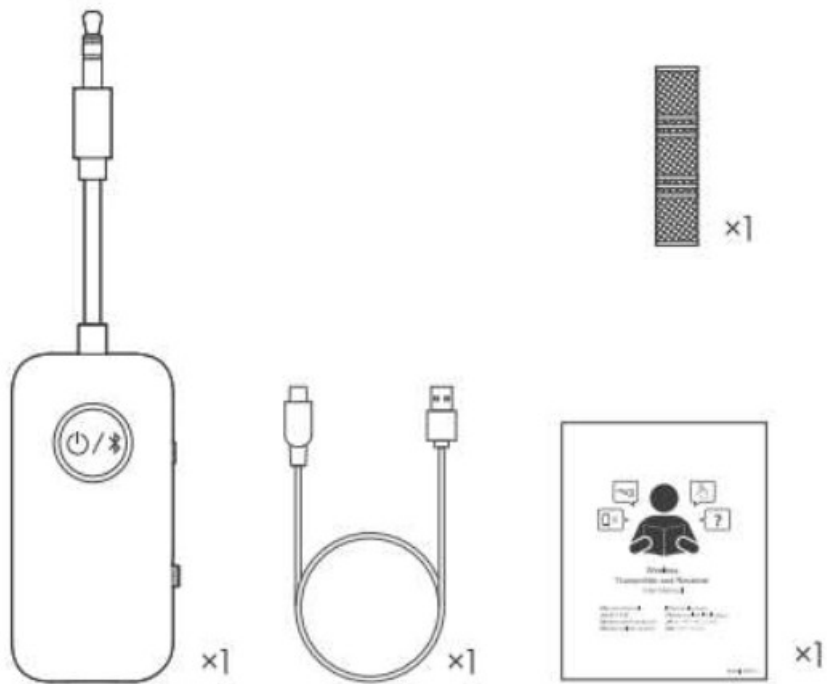
Contents

- 1 RT5013 Wireless Transmitter and Receiver
- 2 In the box
- 3 Product Overview
- 4 TX mode
- 5 RX mode
- 6 Control Functions
- 7 Instructions
- 8 Warranty
- 9 Documents / Resources
 - 9.1 References
- 10 Related Posts

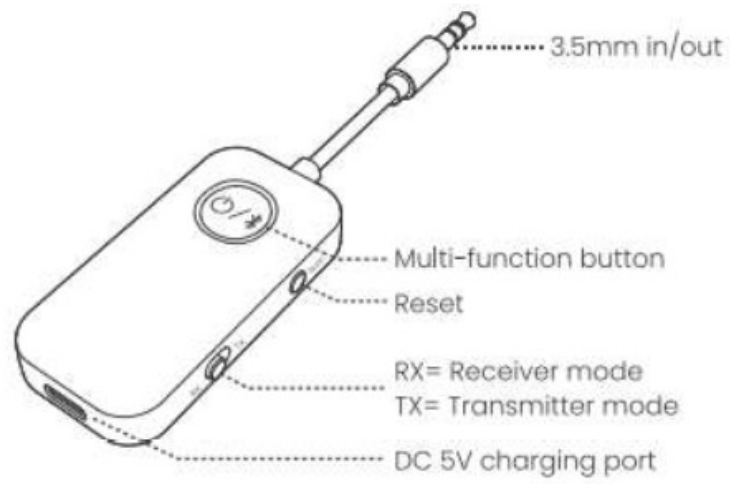
RT5013 Wireless Transmitter and Receiver





In the box



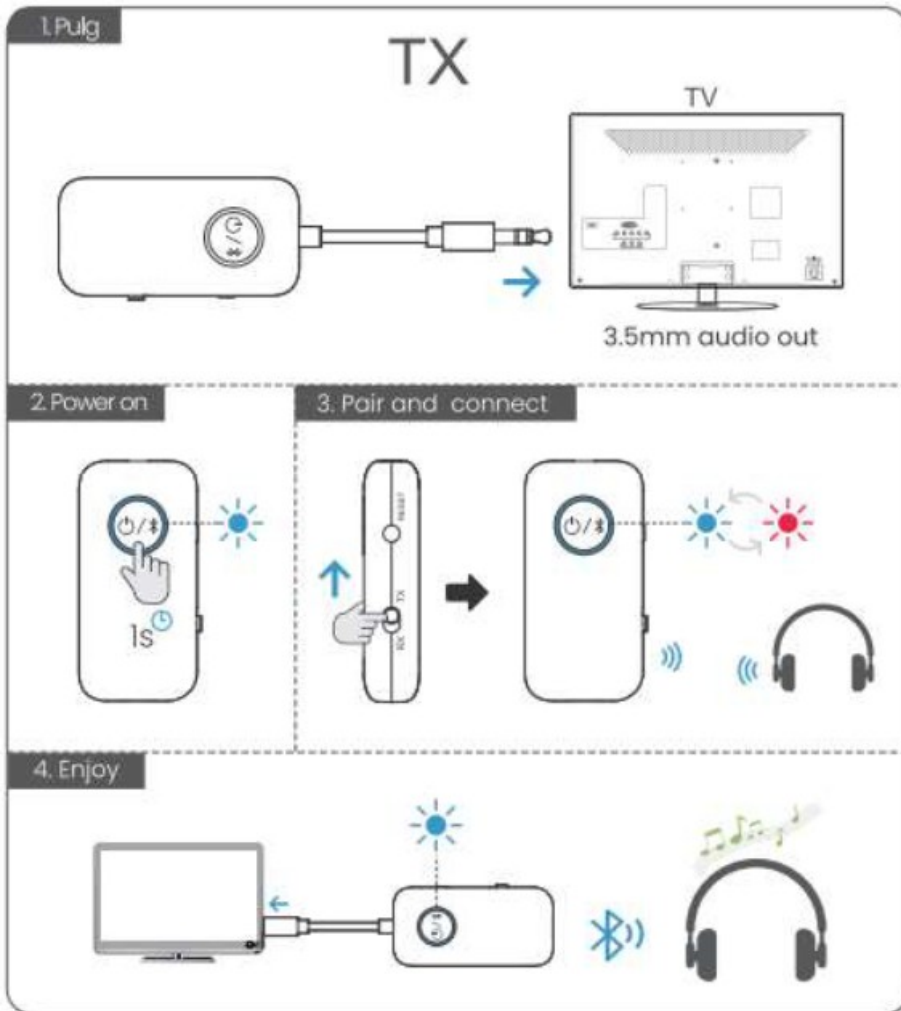
Product Overview



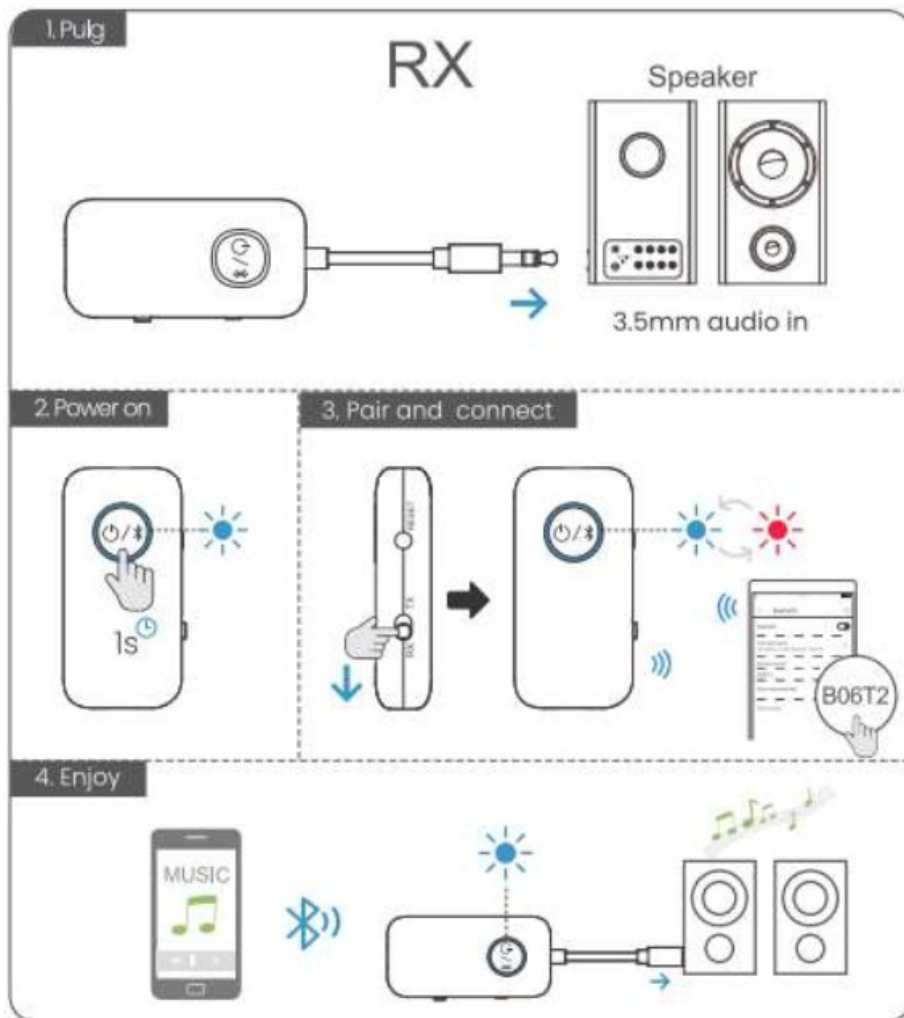
Button	Function	Operation
	Power on	Press for about 1s
	Enter pairing mode	Press for about 2s
	Power off	Press for about 4s
TX	Transmitter mode	Slide to TX to enter transmitter mode
RX	Receiver mode	Slide to RX to enter receiver mode
	Reset	Press for about 2s



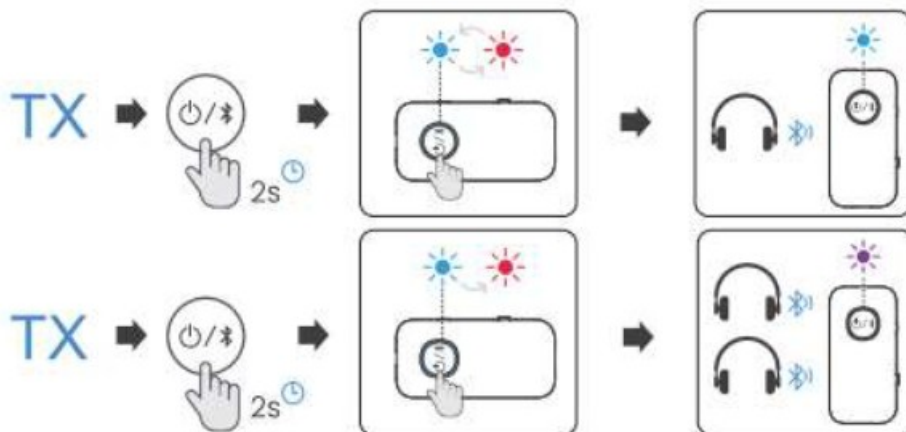
TX mode



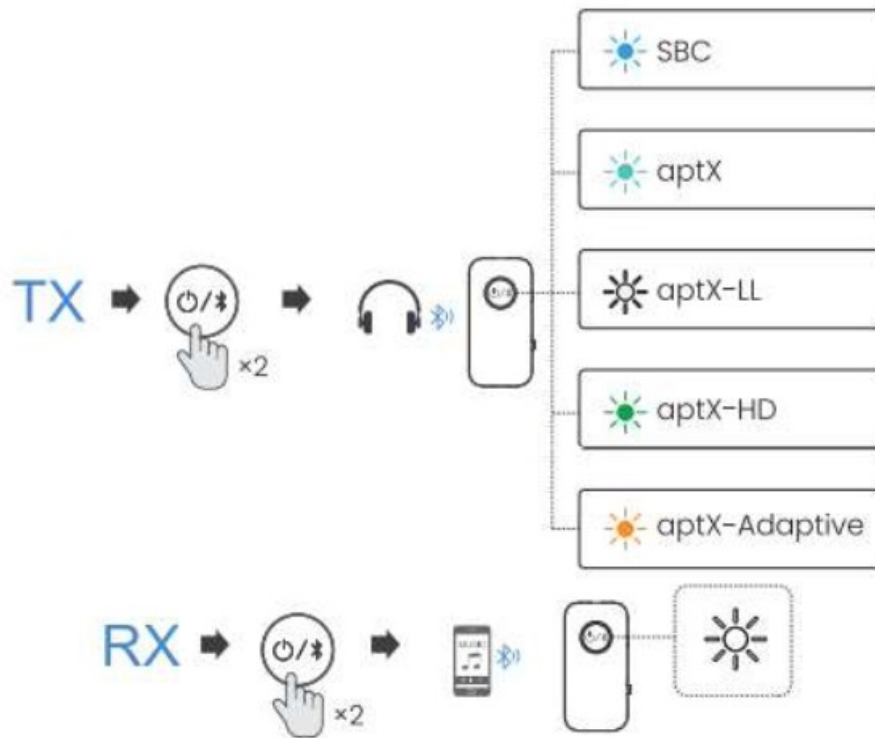
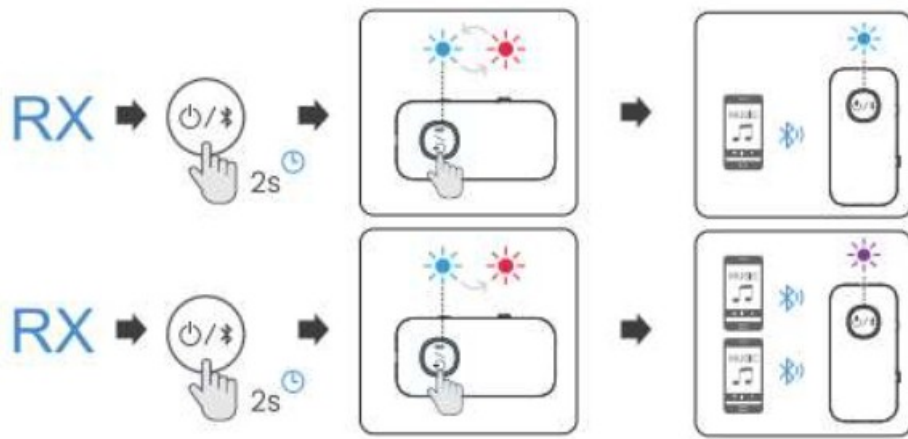
RX mode




Control Functions




After pairing successfully in TX mode, the color of the LED will display according to the audio codec supported by the receiving device, it may stay purple/white/blue/cyan/yellow/green.




Note: In RX mode, if there is a sound delay, please double-click  button to improve the sound quality.

Instructions


TX Mode:

1. Flip the mode button to “TX” Press the  button for 2s. When LED light flashes between red and blue, the adapter will automatically enter into pair mode.
2. Put your Bluetooth device such as Bluetooth headphones/earbuds/speaker as close as possible with this adapter.
3. Turn on your device’s Bluetooth and pair with B06T2 Bluetooth adapter. They will pair automatically.
4. Connect B06T2 with your Phone / TV / Tablet / PC | Laptop / MP3 / MP4 Projector through 3.5mm jack_
5. Enjoy the music


RX Mode

1. Flip the mode button to "RX". Press the  button for 2s. When LED light flashes between red and blue, the adapter will automatically enter into pair mode.
2. Put your Bluetooth device such as TV/Tablet/PC/Laptop/Phone as close as possible with this adapter.
3. Turn on your device's Bluetooth and pair with B06T2 named adapter.
4. Connect B06T2 with your speaker/headphone/through 3.5mm jack.
5. Enjoy the music.

* How to enter pairing mode?

Press and hold the  button for 2 seconds after powered on, B06T2 will enter the pairing mode (LED lights flashing red and blue).

How to pair the second device?

1. Set B06T2 to pairing mode again {press and hold the  button for 2 seconds until the LED flashes red and blue}.
2. Activate the Bluetooth of the second mobile phone, find "B06T2", click connect, and wait for the pairing to succeed.
3. Enjoy your music.

Note: You can only play music on one device at a time, so if you want to play music on the second device, you need to pause the music on the first device before playing it on the second device.

Charging method

- Plug in the charging cable to charge the B06T2, and the LED will be steady red.
- When the battery is fully charged, the LED indicator will turn off. (Usually it takes about 2 hours to fully charge the B06T2)

How to reset the device?

If B06T2 cannot be connected or does not work normally, please refer to the following methods to reset the device:

Long press RESET button for 2 seconds, the white indicator light flashes 3 times at the same time, then it will enter pairing mode.

FCC Statement

This equipment has been tested and found to comply with the limits for a Class 8 digital device, pursuant to part 15 of the FCC Rules. These limits are designed to provide reasonable protection against harmful interference in a residential installation. This equipment generates, uses and can radiate radio frequency energy and, if not installed and used in accordance with the instructions, may cause harmful interference to radio communications. However, there is no guarantee that interference will not occur in a particular installation. If this equipment does cause harmful interference to radio or television reception, which can be determined by turning the equipment off and on, the user is encouraged to try to correct the interference by one or more of the following measures:

- Reorient or relocate the receiving antenna.
- Increase the separation between the equipment and receiver.
- Connect the equipment into an outlet on a circuit different from that to which the receiver is connected.
- Consult the dealer or an experienced radio/TV technician for help.

Caution: Any changes or modifications to this device not explicitly approved by manufacturer could void your authority to operate this equipment.

This device complies with part 15 of the FCC Rules. Operation is subject to the following two conditions: (1) This device may not cause harmful interference, and (2) this device must accept any interference received, including interference that may cause undesired operation.

CE

ANKBIT international. hereby declares that this product is in compliance with the essential requirements and other relevant provisions of Directive 2014/53/EU.

In accordance with Article 10(2) and Article 10(10), this product is allowed to be used in all EU member states.

Warranty

Warranty service is limited to normal use. Any man-made damages such as from connecting to an unsuitable power source, using an unsuitable device, or not following the instructions, as well as damages that did not occur during shipping, repairs, and adjustments not approved by the company, damages from misuse, inattention, or improper installation may cause the warranty to be ineffective immediately. This warranty does not include shipping fees.



Disposal

Always dispose of the used appliance at a recycling centre.
Do not dispose the used appliance together with household waste,



eVatmaster Consulting GmbH Bettinastr, 30
60325 Frankfurt am Main, Germany contact@evatmaster.com

Operator: Ankbit International Limited
Address: 45-51 Chatham Road South, Tsim Sha Tsui, Kowloon, Hong Kong
Manufacturer: ShenZhen Ankbit Electronics Limited
Address: Runfeng industrial Park, No. 4197 Baoan Blvd, Xixiang St, Baoan Dist, Shenzhen, China
FCC ID: 2AUFR-RTSOI3
IC: 29252-B03
HVIN: BO6



MADE IN CHINA

Documents / Resources



[ankbit RT5013 Wireless Transmitter and Receiver](#) [pdf] User Manual
RT5013 Wireless Transmitter and Receiver, RT5013, Wireless Transmitter and Receiver, Transmitter and Receiver, Receiver

References

- [User Manual](#)