



Anhui Yuwei YWSA 600W Portable Power Station User Manual

[Home](#) » [Anhui Yuwei](#) » Anhui Yuwei YWSA 600W Portable Power Station User Manual 

Contents

- [1 Anhui Yuwei YWSA 600W Portable Power Station](#)
- [2 Product Information](#)
- [3 Specifications](#)
- [4 Product Usage Instructions](#)
- [5 Installation](#)
- [6 Operation](#)
- [7 Maintenance](#)
- [8 Product size](#)
- [9 FCC Statement](#)
- [10 Frequently Asked Questions](#)
- [11 Documents / Resources](#)
 - [11.1 References](#)

Anhui Yuwei

Anhui Yuwei YWSA 600W Portable Power Station



Product Information

Specifications

- **Compliance:** FCC Part 15
- **Interference:** Does not cause harmful interference
- **Radiation Exposure:** Complies with FCC radiation exposure limits
- **Minimum Distance:** 20cm between radiator and body
- **Co-location:** Must not be co-located or operate with any other antenna or transmitter

Product Usage Instructions

Safety Precautions

Before using the product, please read and understand the following safety precautions:

- Do not disassemble or modify the product.
- Avoid exposing the product to extreme temperatures or humidity.
- Keep the product away from water and other liquids.
- Do not use the product near flammable materials.
- Avoid dropping or subjecting the product to a strong impact.

Installation

To install the product, follow these steps:

1. Choose a suitable location for the product.
2. Ensure there is a minimum distance of 20cm between the radiator and your body.
3. Avoid placing the product near other antennas or transmitters.
4. Connect the necessary cables and power source to the product.
5. Turn on the product and wait for it to initialize.

Operation

To operate the product, follow these guidelines:

1. Ensure that the product is properly installed and connected.
2. Refer to the user manual for specific instructions on using the product's features.
3. Use the provided controls or interface to interact with the product.
4. Observe any indicators or display messages for important information.
5. When finished, turn off the product and disconnect the power source.

Maintenance

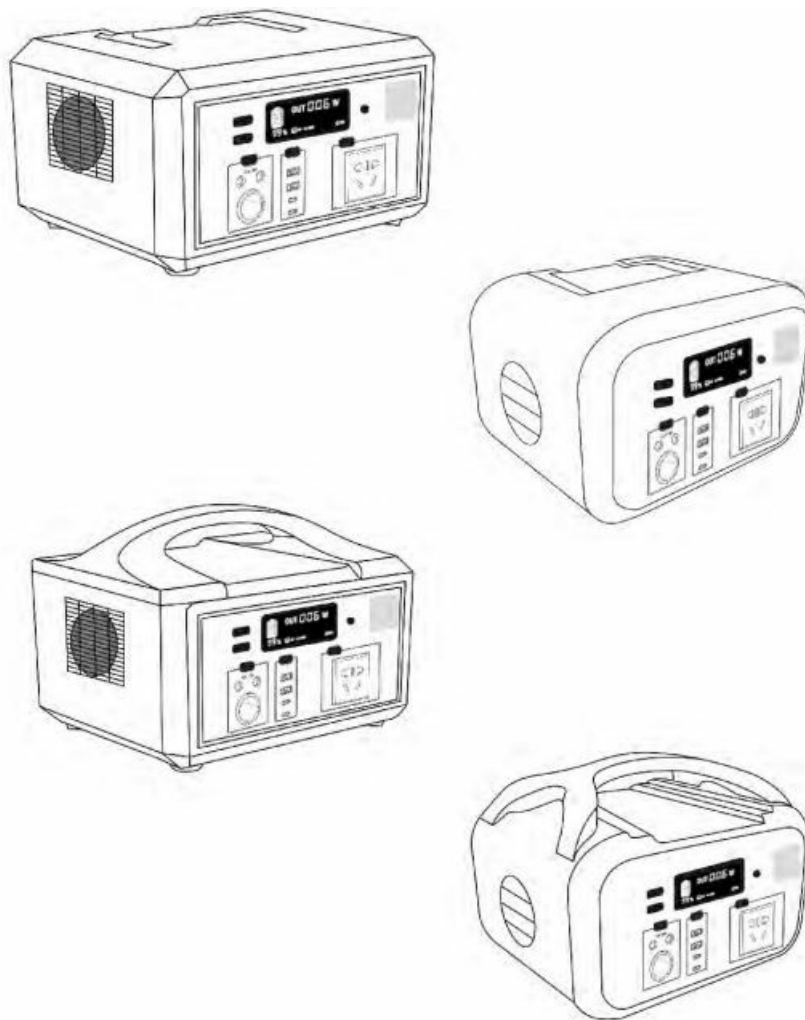
To maintain the product's performance and longevity, consider the following:

- Clean the product regularly using a soft cloth.
- Avoid using harsh chemicals or abrasive materials.
- Keep the product free from dust and debris.
- Periodically check for any loose connections or cables.
- Refer to the user manual for any specific maintenance instructions.

PRODUCT SPECIFICATION

Please read the instruction manual carefully before use

Product Display Diagram



Short brief

This is a portable power station for outdoors and indoors. Apply to wild camping, emergency communication, medical emergencies, long drive journeys, and outdoor fishing. Can supply 600W power for your devices.

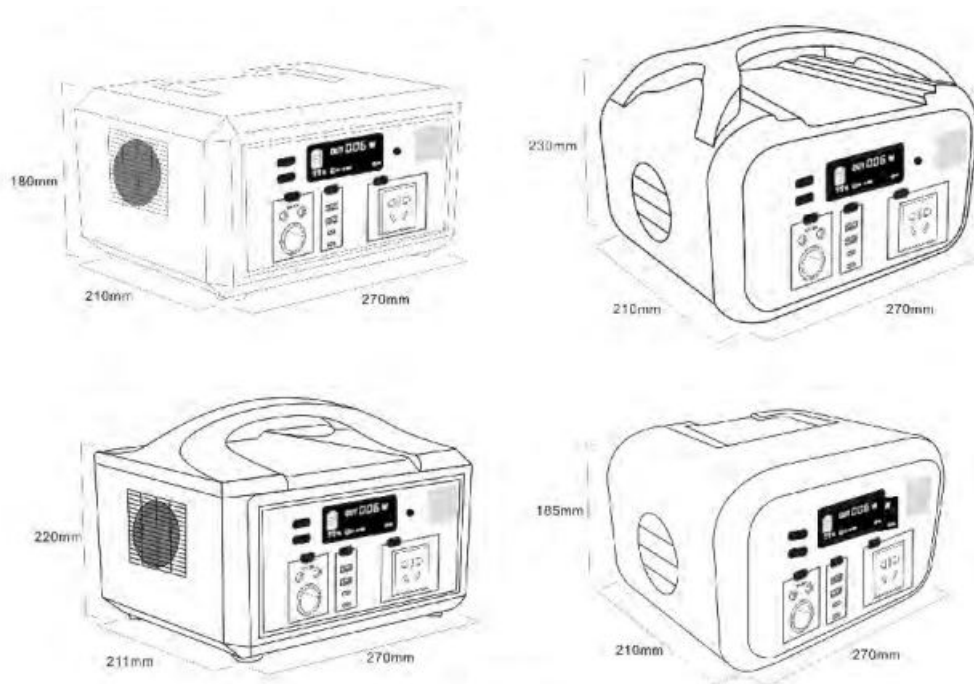
Parameter

type	Item	Parameter
INPUT	Direct current Input	DC 5521 12-24V-5A
	Direct current Input	Type-C PD100W
AC OUT 110V /220V	AC output Voltage	AC plug AC220V±5%
	AC output Watt	600W
	Over-load Protection	700W
	AC output wave	Pure sine wave
	AC output Peak	1200W peak hold time <50ms
	Frequency	50Hz
USB Output Ports	USB1 OUTPUT	QC3.0 MAX 12V/1.5A
	USB2 OUTPUT	QC3.0 MAX 12V/1.5A
TC output port	Type-C1 OUTPUT	PD18W
TC output port	Type-C2 OUTPUT	PD100W
Wireless output		15W
DC output port	DC1/DC2 Cigarette lighter	12V/10A MAX
Charging parameter		DC 12-24V/5A
Charging time	5-6H	from 10% to 100% (auto cut-off)
Charging voltage	21.9V±0.1V	the voltage until full-charged
Protect function		short circuit, over-load, over-heat, over-voltage, over-current, short-voltage
LED screen	Show battery charging status	Percentage of battery, Charging status
	DC, AC, PD Working condition	Showing watt
Battery pack	Type	Lithium iron phosphate 32700 6000MA
	Capacity	1440000mAH 6S4P
	Battery pack watt	480Wh
	Recycle	Over 1000 times
Over-heat Protection	AC over-heat Protection	≥85℃
	Battery over-heat Protection	≥65℃
Boot static		< 1W

Product using time (Discharge)

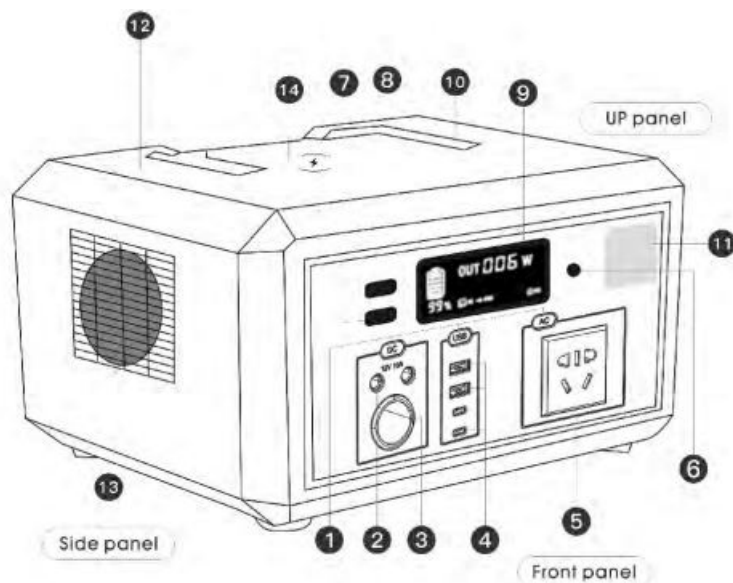
Devices	Device watt	Discharging time
Smartphone	4000mAh	Full charge 32 times
Bulb	40W	Discharge 12 hours
Home use fan	75W	Discharge 7 hours
Laptop	35W	Discharge 13.5 hours
Cooking machine	500W	Discharge 0.9 hours

Product size



as different brand devices. The discharging time is also different. Please be subject to reality.

Panel

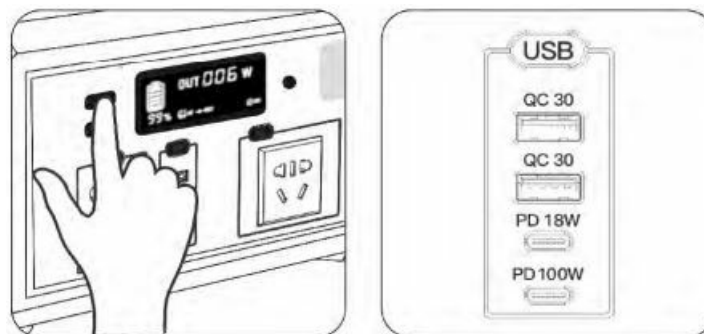


1. Solo switch
2. DCI 2V/I OA

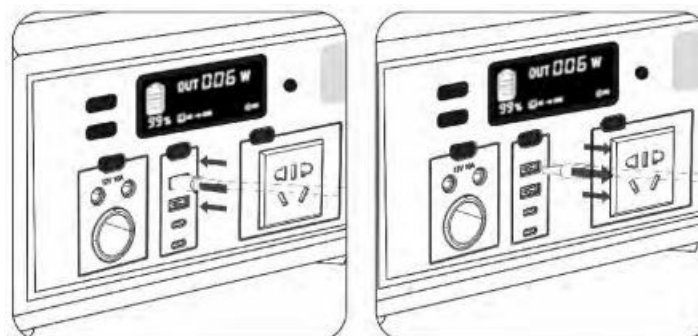
3. Cigarette lighter port
4. USB/PD
5. Output
6. AC
7. IN charge
8. Port LED
9. LED light
10. Switch
11. Turn on/off
12. LCD screen
13. Handler
14. LED light
15. Cover
16. Vents
17. Wireless charger

The manual of USB QC3.0 and PD output

1. Long press 3 seconds of turn on/off switch to turn on the devices. LCD screen will turned on.
2. Long press 3 seconds of USB switch. A USB icon will show on the LCD screen. Which means it's ready.

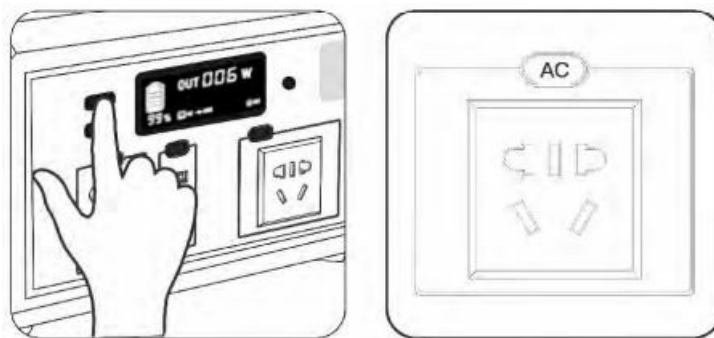


3. Plug-in devices. Start to discharge.
4. When finished using. Please pull off the plug. The whole device will shut down automatically.



The manual of AC 220V/600W output

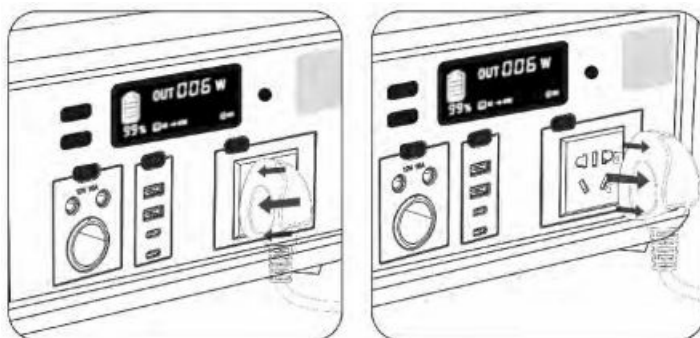
1. Long press 3 seconds of turn on/off switch to turn on the devices. LCD screen will turned on.
2. Long press 3 seconds of AC switch. AC icon will show on the LCD screen. Which means it's ready.



3. Plug-in devices. Start to discharge.

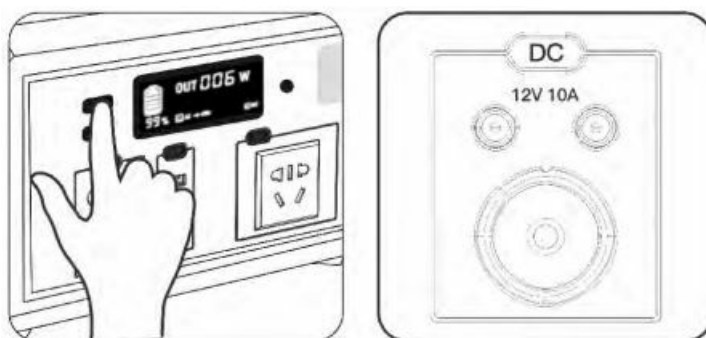
(Before charging the device, please check whether the power of the device exceeds 600W, and whether the energy storage power only supports devices,; 600W)

4. When finished using. Please pull off the plug. The whole device will shut down automatically.



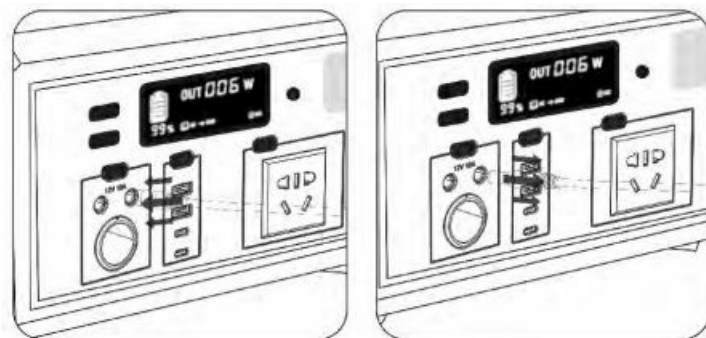
The manual of DC552 I output

1. Long press 3 seconds of turn on/off switch to turn on the devices. LCD screen will be turned on.
2. Long press 3 seconds of DC switch. DC icon will show on the LCD screen. Which means it's ready.



3. Plug-in devices. Start to discharge.

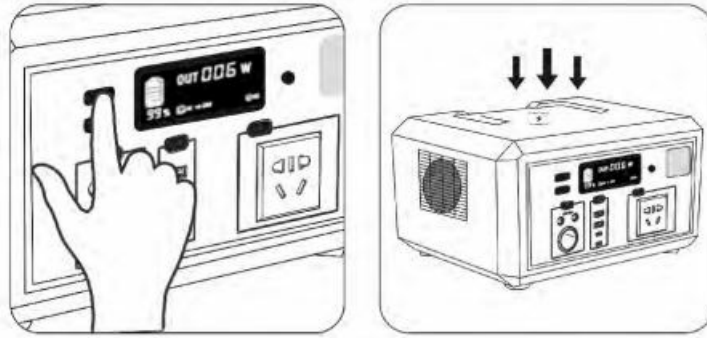
4. When finished using. Please pull off the plug. The whole device will shut down automatically.



The manual of wireless charging output

1. Long press 3 seconds of turn on/off switch to turn on the devices. Wireless charging is automatically turned on.

2. Put the smartphone on the wireless charging panel. Start wireless charging.



Warning

- Don't put the device into water.
- Don't heat the device or near the fire source. ® Don't tear apart the device.
- Don't over-hit the product or throw it from a high level.

Attention

- Please follow the manuals.
- Please leave at least 5cm for the air vent. In case the device overheating
- The device will automatically shut off when the electricity of the device is not enough the discharging device watt is bigger than 500W, or in high-temperature conditions
- Please don't charge and discharge at the same time.
- If you haven't used this device for a long time. The electricity may run out. Please charge this device every 6 months.
- When loading some big-watt products. If its\ instantaneous power is over 1000W. the device will automatically protect itself. It will turn off the output. Please make sure the loading product needs no more than 1000W of instantaneous power.
- Please don't use this device under some extreme conditions eg: flammable or corrosive conditions
- If you drop the device into the water by accident. Please send back it to where you purchased it. We will take care of it. If the device is damaged by wrong use. We may charge accordingly.

FCC Statement

This device complies with part 15 of the FCC rules. Operation is subject to the following two conditions:

1. this device may not cause harmful interference, and
2. this device must accept any interference received, including interference that may cause undesired operation.

Changes or modifications not expressly approved by the party responsible for compliance could void the user's authority to operate the equipment.

NOTE: This equipment has been tested and found to comply with the limits for a Class B digital device, under part 15 of the FCC Rules. These limits are designed to provide reasonable protection against harmful interference in a residential installation. This equipment generates uses and can radiate radio frequency energy and, if not installed and used by the instructions, may cause harmful interference to radio communications. However, there is no

guarantee that interference will not occur in a particular installation. If this equipment does cause harmful interference to radio or television reception, which can be determined by turning the equipment off and on, the user is encouraged to try to correct the interference by one or more of the following measures:

- Reorient or relocate the receiving antenna.
- Reorient or relocate the receiving antenna.
- Reorient or relocate the receiving antenna.
- Consult the dealer or an experienced radio/TV technician for help with an important announcement

Important Note:

Radiation Exposure Statement

This equipment complies with FCC radiation exposure limits set forth for an uncontrolled environment. This equipment should be installed and operated with a minimum distance of 20cm between the radiator and your body. This transmitter must not be co-located or operating in conjunction with any other antenna or transmitter.

Frequently Asked Questions

Can I modify the product?

No, do not disassemble or modify the product as it may void your warranty and pose safety risks.

How far should I keep the product from my body?

The minimum distance between the radiator and your body should be 20cm to comply with FCC radiation exposure limits.

Can I use the product near other antennas or transmitters?

No, the product must not be co-located or operate in conjunction with any other antenna or transmitter.

How do I clean the product?

Use a soft cloth to clean the product. Avoid using harsh chemicals or abrasive materials that may damage the surface.

What should I do if I encounter interference?

If you experience interference, try adjusting the position or location of the product. Ensure that it is away from other electronic devices that may cause interference.

Portable Power
Station Manual



[Anhui Yuwei YWSA 600W Portable Power Station](#) [pdf] User Manual
YWSA 600W Portable Power Station, YWSA 600W, Portable Power Station, Power Station

References

- [User Manual](#)

[Manuals+.](#) [Privacy Policy](#)