



ANGUSTOS ACV2 Video Wall Controller User Manual

[Home](#) » [ANGUSTOS](#) » ANGUSTOS ACV2 Video Wall Controller User Manual 

Contents

- [1 ANGUSTOS ACV2 Video Wall Controller](#)
- [2 Overview](#)
- [3 System Diagram](#)
- [4 Hardware](#)
- [5 Software](#)
- [6 Documents / Resources](#)
 - [6.1 References](#)
- [7 Related Posts](#)



ANGUSTOS ACV2 Video Wall Controller



Angustos was founded in 2000 and is now regarded as one of the foremost manufacturers of digital and analogue KVM solutions.

For more than 20 years our customers have been convinced by our core competencies in extending, switching and distributing standardized computer signals.

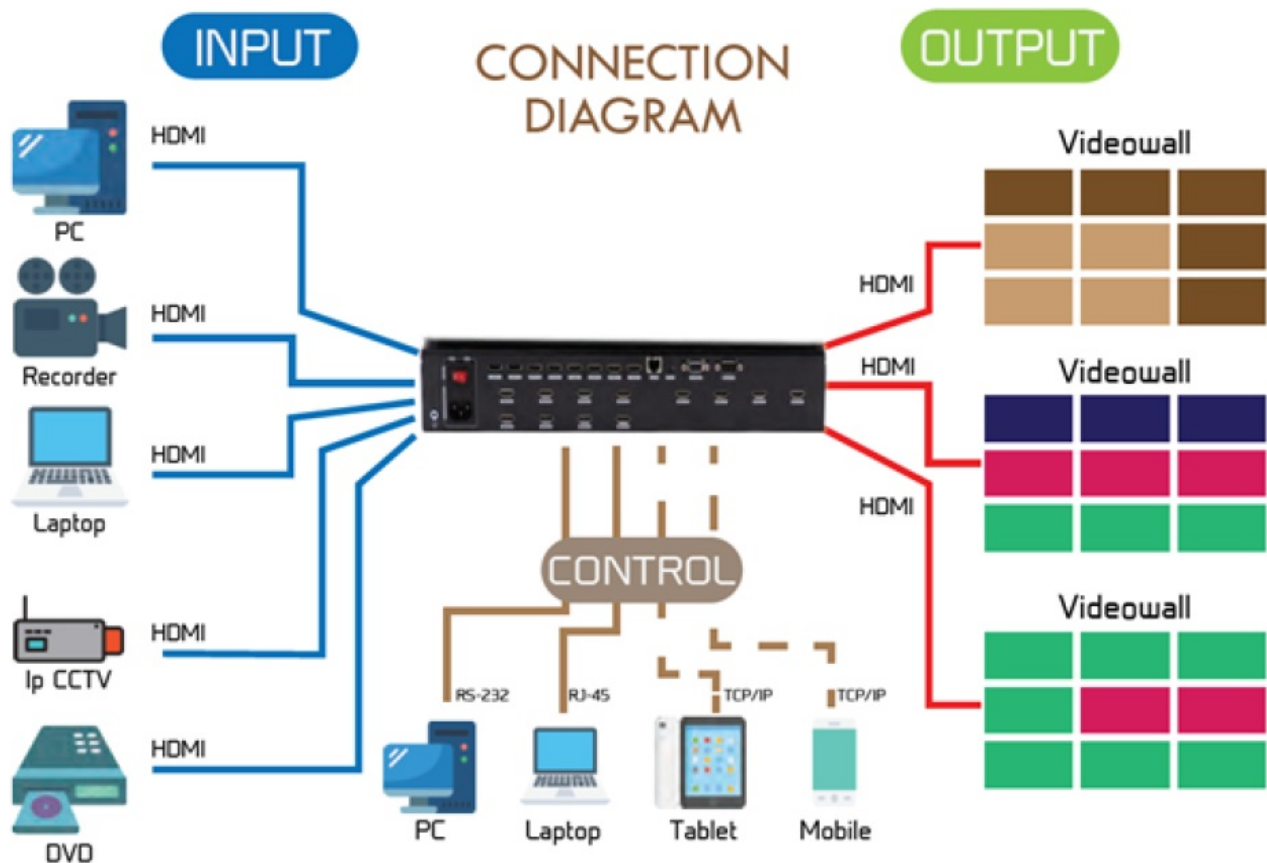
We are confirmed to established international standards. We can provide customers with complete data center solutions as well as OEM/ODM services. Our products are approved vendor for IBM, Guntermann & Drunck (G&D) and Raritan for more than 7 years, together with customers from fortune 500 corporations.

We can cover even from medium to small business, factory and industrial operations, military and government installations, home office and personal

Overview

ANGUSTOS video wall controller is a high performance video processing equipment based on hardware architecture. Which avoids common problems of crash, blue screen, viruses. It supports 4 layer video windows per display arbitrary layering, overlap, moving, stretching, zooming in/out, roaming, Picture In Picture.

System Diagram



Hardware



ACV2-0812A Chassis

In the normal state (when power on the system or the touch screen is not touched for 12 or more seconds) , the front LED lights will light up



1. AC Power module and Manual Switch
2. Input HDMI Ports
3. Output HDMI Ports
4. LAN TCP/IP – RJ45 Interface
5. RS-232 In / Out (COM PORT)

Execute the Software file VWC_Vxxx.exe to run the program.

Software

Double click the application program to open the control software interface. The user name and password both are “admin”.

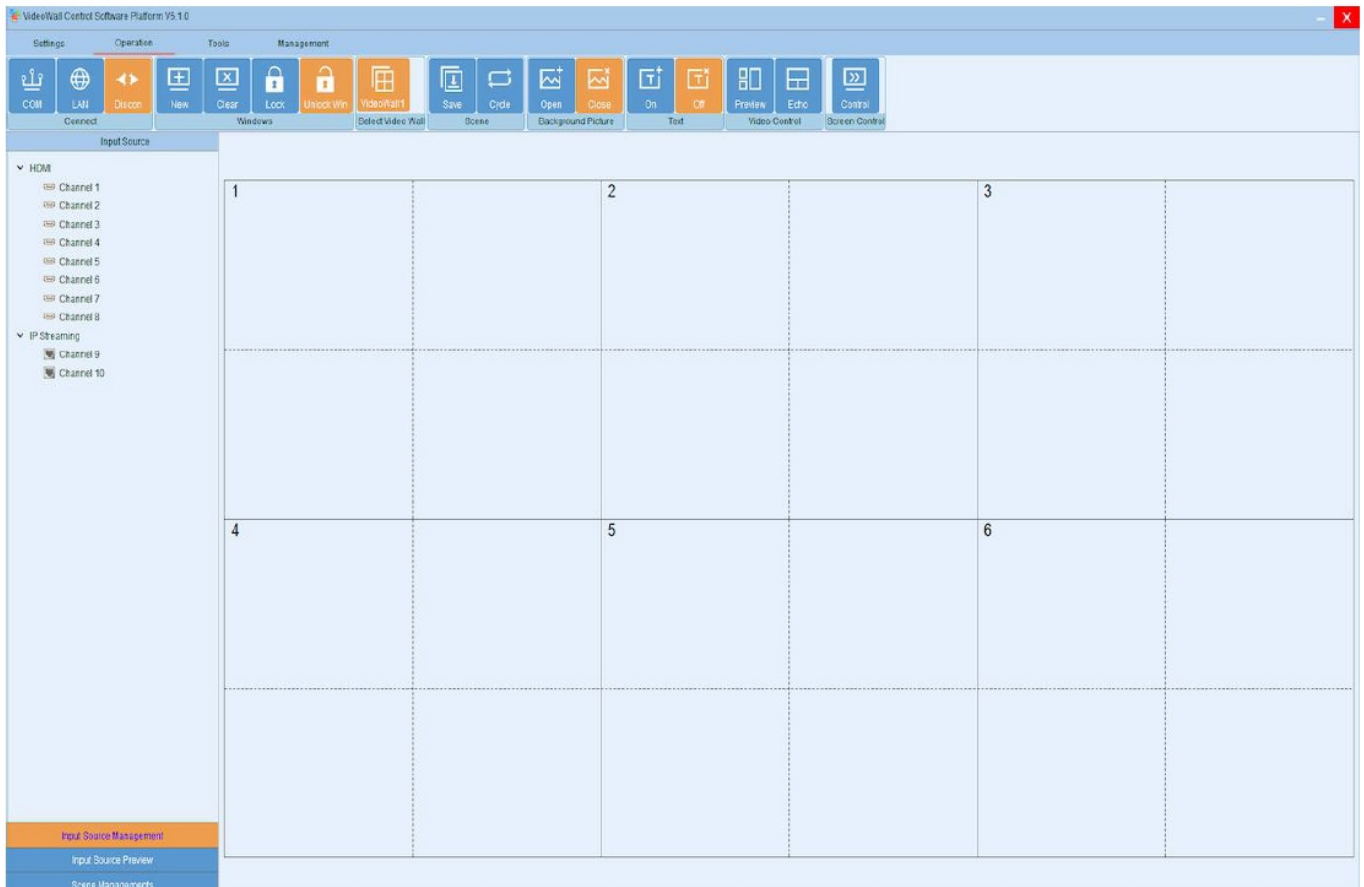
The screenshot shows the 'Login' window of the 'Video Wall Control Software'. The window has a light blue background and a red close button in the top right corner. The title bar says 'Login'. The main content area is titled 'Video Wall Control Software'. It contains the following fields and controls:

- User Name:** A dropdown menu with 'admin' selected.
- Password:** A text field with six dots, indicating a masked password.
- Connection:** A text field with the IP address '192.168.3.100'.
- Settings:** A blue button located to the right of the 'Connection' field.
- Mode Selection:** Two radio buttons: 'Communication' (which is selected) and 'Demo'.
- Login:** A blue button at the bottom left.
- Cancel:** A blue button at the bottom right.

Press Setting -> Choose the correct LAN card connected to the chassis => Click on Search (Magnifier) icon => The software will find the controller IP automatically in the same subnet. Choose the IP and press OK

The screenshot shows the 'Setting' window of the 'Video Wall Control Software'. The window has a light blue background and a red close button in the top right corner. The title bar says 'Setting'. It contains the following elements:


- Tabs:** Two tabs, 'LAN' and 'COM', with 'LAN' currently selected.
- NetCard:** A dropdown menu showing 'Ethernet 2[192.168.1.43]'.
- Setting:** A blue button to the right of the 'NetCard' dropdown.
- Search:** A magnifying glass icon in a dark blue button to the right of the 'Setting' button.
- IP List:** A large white rectangular area containing a list of IP addresses. The first IP, '192.168.3.210', is highlighted in grey.
- IP Address:** A text field at the bottom left showing '192.168.3.210'.
- OK:** A blue button at the bottom right.



Control Port Connection

Click sub-menu [Connect] in [Setting] to pop up a dialog box as follows. The default baud rate is 115200. Select the corresponding COM port and click [Set up] to connect.

For the network connection control, click [Search] button to automatically obtain the IP address and device port. Then click [Set up] button to connect.


Connect to Videowall controller
✕

Connect

COM Port: COM8

Baud Rate: 115200

Interval(ms): 1

Delay(ms): 1

Set up

IP Address: 192.168.3 .100

IP Port: 5000

Interval(ms): 1

Delay(ms): 1

Set up

IP Address: 192.168.3 .100

Modify IP

SubnetMask: 255.255.255.0

Modify

Baud Rate: 115200

Modify

Gateway: 192.168.3 .1

Modify

Auto IP

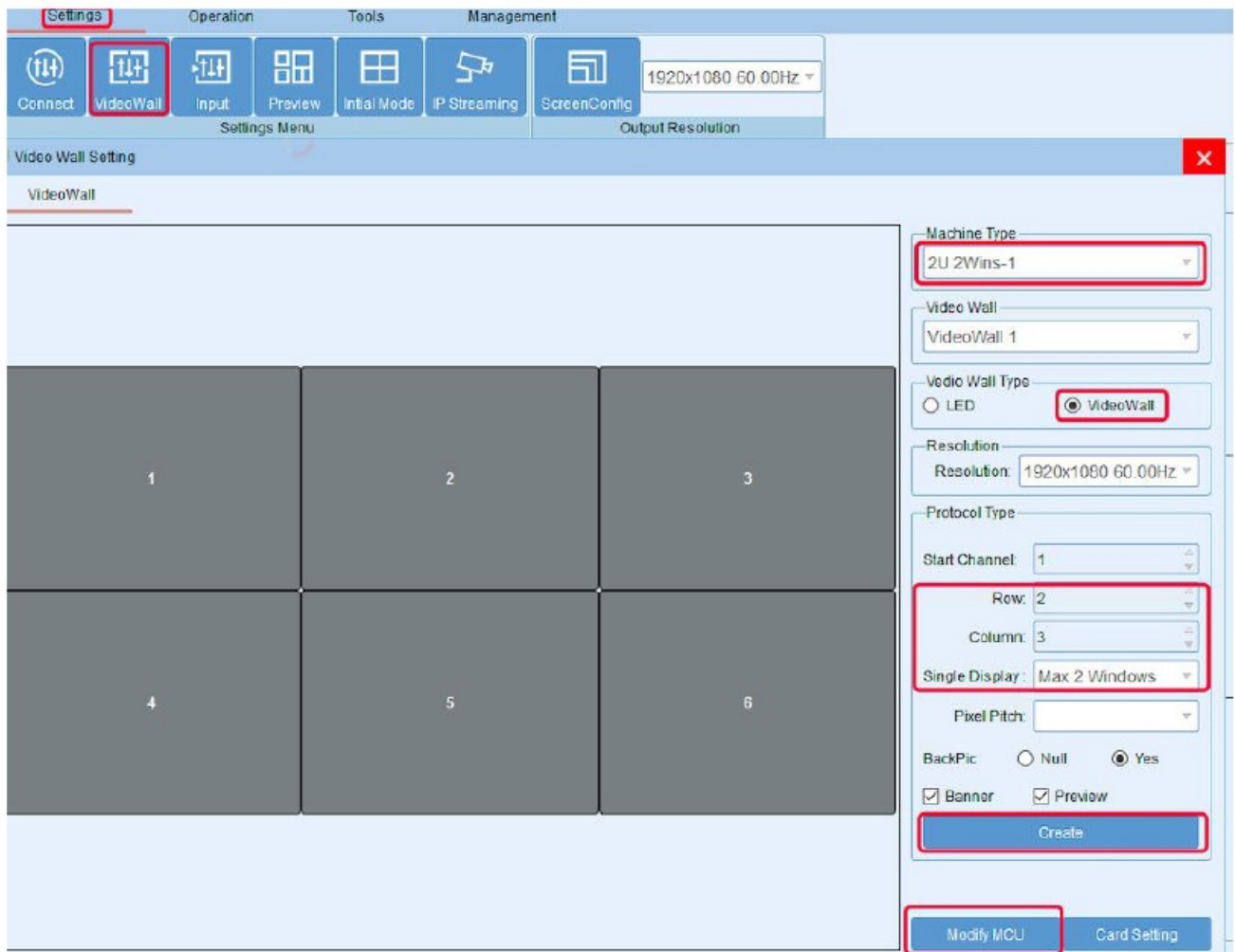
Fixed IP

Controller in the same LAN

Search

Video Wall Setting

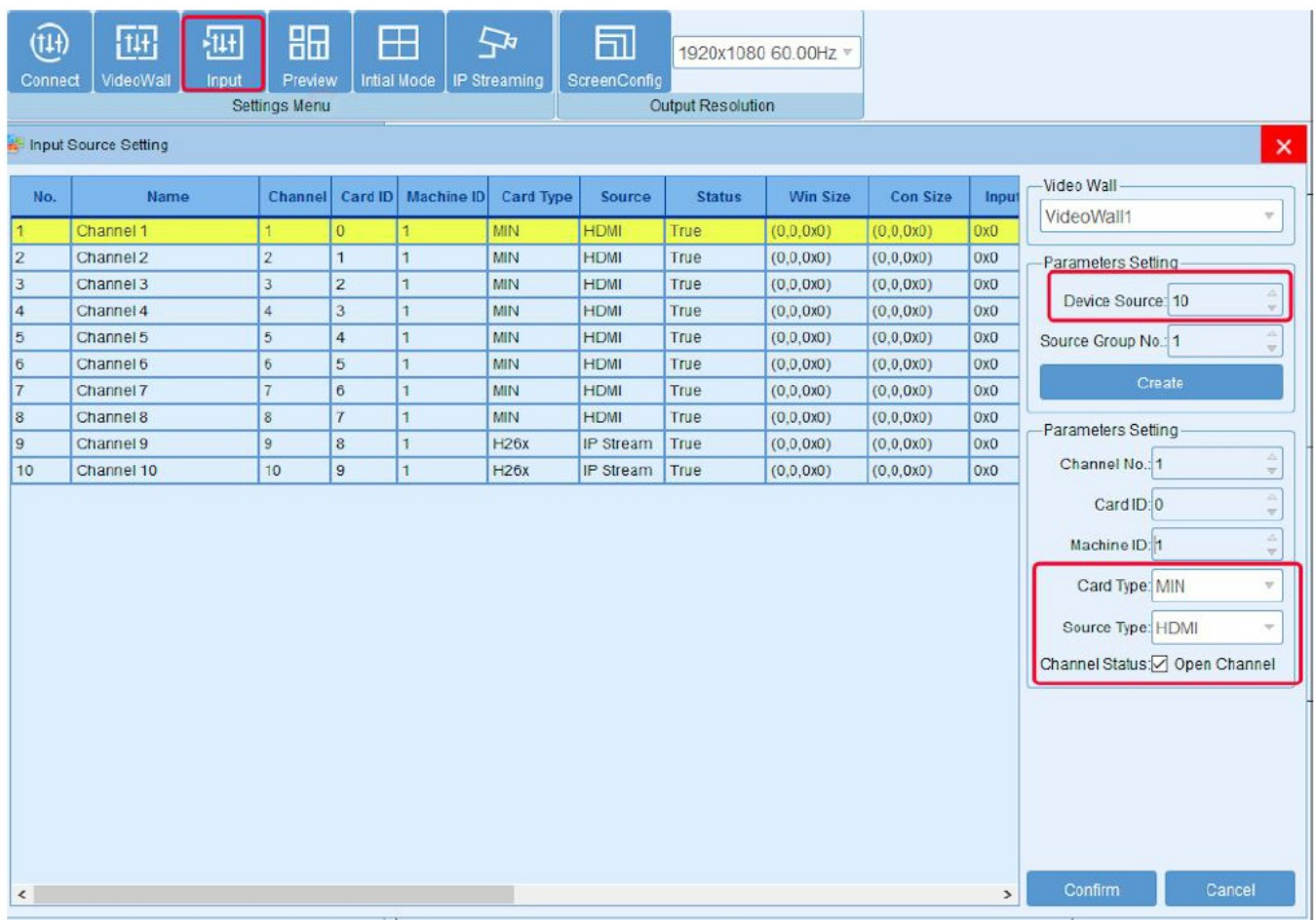
Take 8 input and 6 output 2 layer windows video wall controller setting for example. Choose the machine type 2U 2windows-1 and Video wall type Videowall
 Row 2 and Column 4, Max 2 windows in single display Then click the icon [Create] and then [Modify MCU] .



Input Source Setting and Management

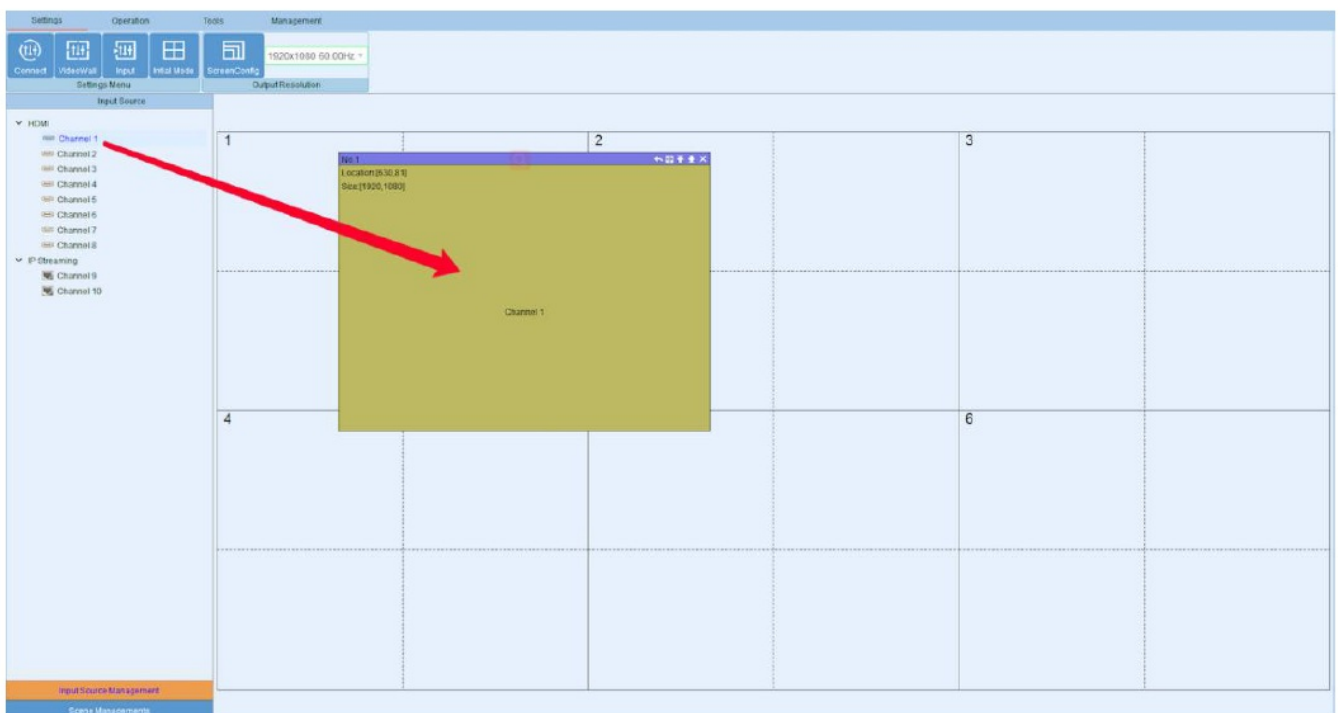
Input Source Setting

The user can set each card specification as the interface shown below.



Input Source Management

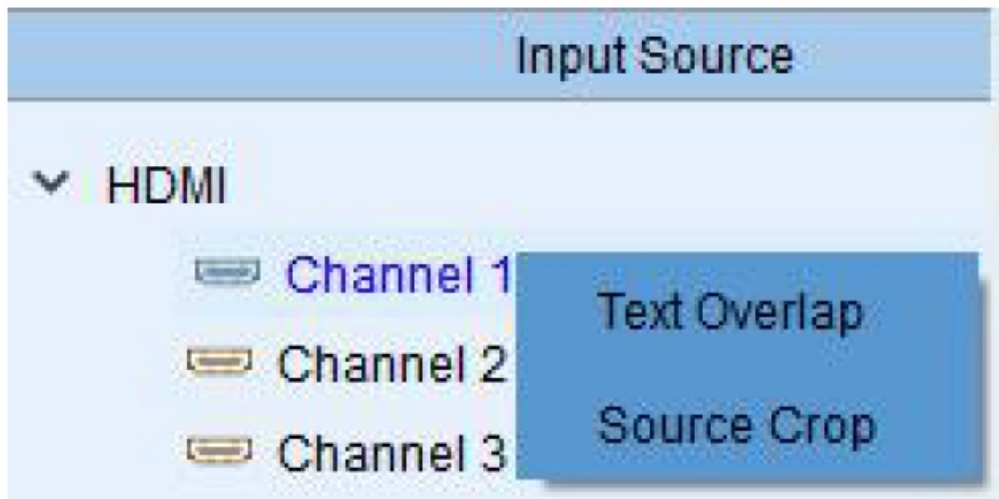
On the left side of the software interface, there is a input sources list. As shown below. Select one input signal and drag it to the right side of the display area to realize signals switching. Double-click the input signal to change its name.



Input source setting

Right click the input source, it will pop up a sub-menu for input source setting. Such as text overlap in inputs and

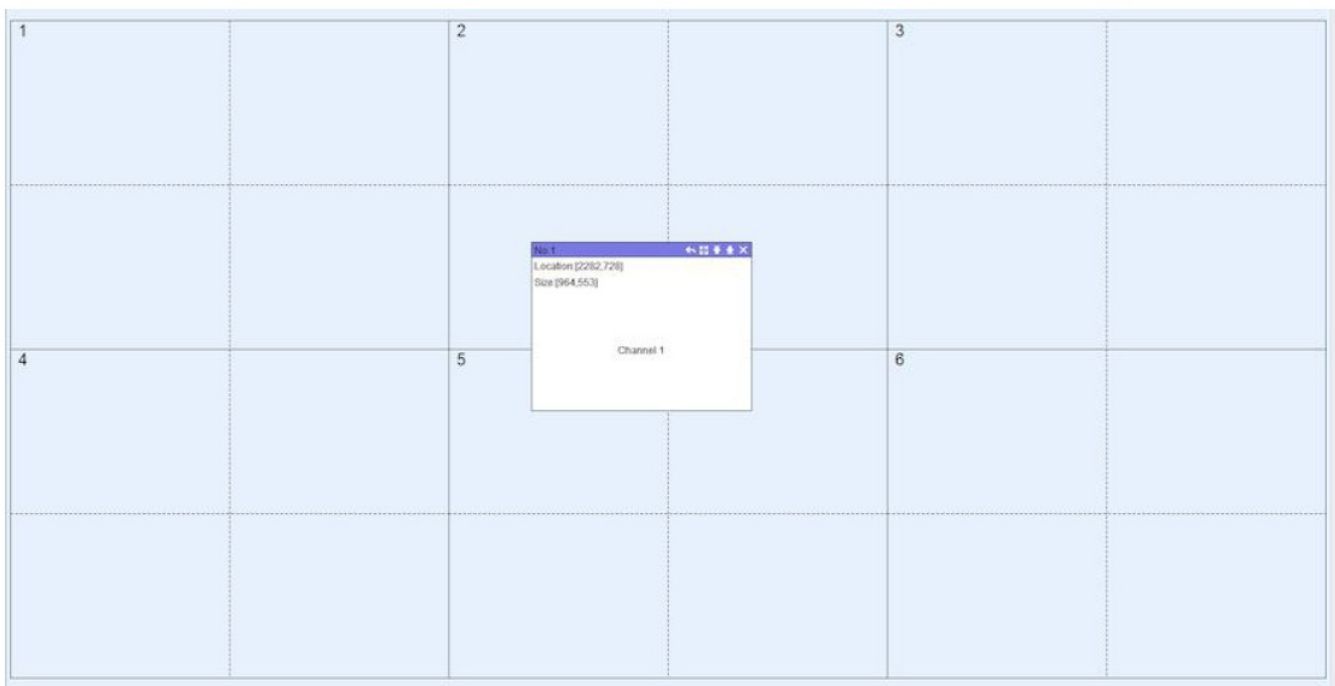
input source cropping.



Video Window Operation

Open video window

Press and drag the left mouse button in the operation interface to create a rectangle window, as show in the figure below.



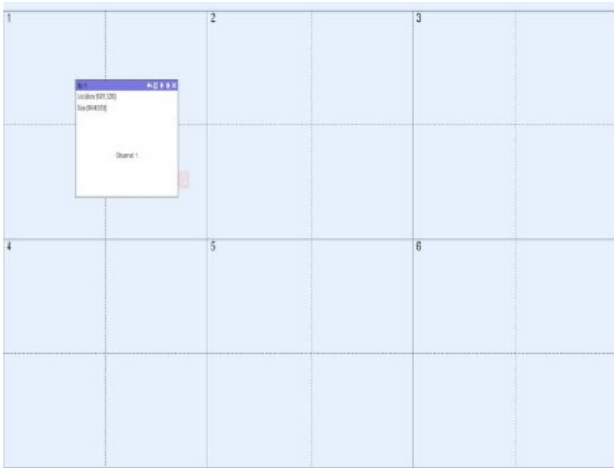
Adjust video window size and position

Move the mouse pointer on the video window, then press and drag it to move the window to an appropriate position. Move the mouse pointer to the bottom right of the window, and then drag it to change the window size when it turns into a two-way arrow.

Window menu operation

- There are five menus at the top of each window. Its available for users to do windows operation. The black full line in operation area represents screen frame. The dotted line represents blocks in single screen unit.
- Close: Close the current video window
- Top and Bottom: Change window level to be on the bottom or the top.

- Full screen display: Click the menu to realize current operation window to be displayed in the entire video wall. Click this button again, it will return to previous size.



- Return: Click the menu, the operation window will be displayed fully in the single screen of the current upper-left angle.
- Click sub-menu Clear of Operation menu, all the video windows will be deleted.
- Click sub-menu New of Operation menu, video windows will be displayed in single screen of the video wall, as shown in the figure below.
- Click sub-menu Lock of Operation menu to lock all video windows, and all the windows cannot be moved but the user can open a new window on it.
- Click sub-menu Unlock of Operation menu to unlock all the windows.
- Click sub-menu Initial mode of Settings to select the window layers for single screen before you operate the New function.

Scene Mode Save/ Recall and Cycle

Scene Mode Save

Click the sub-menu Save in Operation menu to save current video wall layout. The scene name can be edited.

Scene mode recall

There are Scene Management menu at the bottom left interface.

Click the menu Load to recall the mode and choose Confirm to take it effect.

Click the menu Delete to delete the saved scene mode data.

Scene mode cycle

Click the sub-menu Cycle in Operation menu, then add the cycle scenes to the list and choose Interval time for each mode. Clicking the icon "Start" to start the cycle.



ANGUSTOS LLC.

1309 Coffen Ave. STE 1200, Sheridan, Wyoming, 82801, USA.

Email: inquires@angustos.com

Website: <http://www.angustos.com>

Documents / Resources

 <p>ANGUSTOS VIDEO WALL CONTROLLER</p> <p>2020 2021</p> <p>ACV2 CONTROLLER USER MANUAL</p>	<p>ANGUSTOS ACV2 Video Wall Controller [pdf] User Manual</p> <p>ACV2 Video Wall Controller, ACV2 Controller, ACV2, Video Wall Controller, Video Controller, Wa ll Controller</p>
 <p>ANGUSTOS VIDEO WALL CONTROLLER</p> <p>ACV2 SERIES CONTROLLER USER MANUAL</p>	<p>ANGUSTOS ACV2 Video Wall Controller [pdf] User Manual</p> <p>ACV2 Video Wall Controller, ACV2, Video Wall Controller, Wall Controller</p>

References

- 
[ANGUSTOS - The Best Selling IT & Pro AV in USA Market!](#)