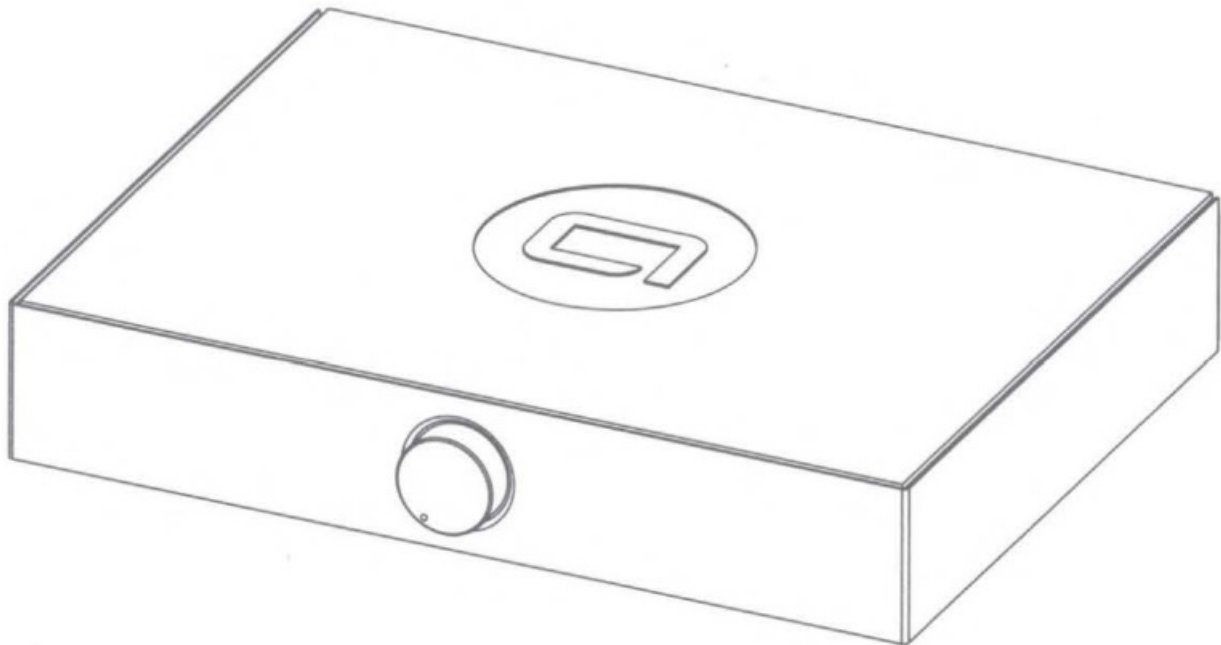




andover SPINBASE Turntable Speaker System Instruction Manual

[Home](#) » [andover](#) » andover SPINBASE Turntable Speaker System Instruction Manual 



Contents

- 1 [WARNING](#)
- 2 [Introduction](#)
- 3 [Rear Panel](#)
- 4 [How to Connect your Turntable](#)
- 5 [Using Spinbase](#)
- 6 [Room Placement](#)
- 7 [Warranty](#)
- 8 [Documents / Resources](#)
 - 8.1 [References](#)
- 9 [Related Posts](#)

WARNING

DO NOT OPEN

TO PREVENT THE RISK OF ELECTRIC SHOCK, DO NOT REMOVE THE COVER. NO USER-SERVICEABLE PARTS INSIDE. REFER SERVICING TO QUALIFIED SERVICE PERSONNEL.



This symbol alerts the user to the presence of uninsulated “dangerous voltage” within the product’s enclosure that may be of sufficient magnitude to constitute a risk of electric shock to persons.



This symbol is intended to alert the user to the presence of important operating and maintenance (servicing) instructions in the literature accompanying the appliance.

Important Safety Instructions

1. Read these instructions.
2. Keep these instructions.
3. Heed all warnings.
4. Do not use this apparatus near water.
5. Clean only with a dry cloth.
6. Do not block any ventilation openings. Install in accordance with the manufacturer’s instructions.
7. Do not install near any heat sources such as radiators, heat registers, stoves, or other apparatus (including amplifiers) that produce heat.
8. Do not defeat the safety purpose of the polarized or grounding-type plug. A polarized plug has two blades one wider than the other. A grounding-type plug has two blades and a third grounding prong. The wide blade or the third prong is provided for your safety. If the provided plug does not fit into your outlet, consult an electrician for the replacement of the obsolete outlet.
9. Only use attachments/ accessories specified by the manufacturer.
10. Use only with the cart, stand, tripod, bracket, or table specified by the manufacturer, or sold with the apparatus.
When a cart is used, use caution when moving the cart/ apparatus combination to avoid injury from tip-over.
11. Unplug this apparatus during lightning storms or when not used for long periods of time.
12. Refer all servicing to qualified service personnel. Servicing is required when the apparatus has been damaged in any way, such as a power supply cord or plug is damaged, liquid has been spilled or objects have fallen into the apparatus, the apparatus has been exposed to rain or moisture, does not operate normally, or has been dropped.
13. The apparatus shall not be exposed to dripping or splashing and no objects filled with liquids, such as vases, shall be placed on the apparatus.
14. Do not install this apparatus in a bookcase or similar unit.

15. The apparatus draws nominal non-operating power from the AC outlet with its STANDBY/ON switch in the standby position.
16. The apparatus should be located close enough to the AC outlet so that you can easily grasp the power cord plug at any time.
17. To completely disconnect the power input, the rear panel power switch may be switched off.
18. Excessive sound pressure from earphones and headphones can cause hearing loss.
19. The battery shall not be exposed to excessive heat such as sunshine, fire, or the like.

Additional Safety Advice

1. Keep surrounding objects at least four inches away from the apparatus for adequate ventilation.
2. Ventilation openings on the apparatus should not be impeded by such items as newspaper, cloths, curtains, and the like.
3. Do not place naked flame sources near the apparatus, such as lighted candles.
4. Dispose of internal electronics in accordance with local safety and environmental regulations.
5. Do not operate the apparatus at a temperature less than 36° F / 2° C or greater than 100° F / 38° C.

Caution

- DO NOT REMOVE THE EXTERNAL ENCLOSURE PARTS TO EXPOSE THE ELECTRONICS. NO USER-SERVICEABLE PARTS ARE INSIDE.
- IF YOU ARE EXPERIENCING PROBLEMS WITH THIS PRODUCT, CONTACT ANDOVER AUDIO CUSTOMER SUPPORT. DO NOT USE THE PRODUCT UNTIL IT HAS BEEN REPAIRED.

FCC STATEMENT FOR THE U.S.A.

This equipment has been tested and found to comply with the limits of part 15 of the FCC rules. These limits are designed to provide reasonable protection against harmful interference in a residential installation. This equipment generates, uses, and can radiate radio frequency energy and, if not installed and used in accordance with the instructions, may cause harmful interference to radio communications, however, there is no guarantee that interference will not occur in a particular installation. If this equipment does cause harmful interference to radio or television reception, which can be determined by turning the equipment off and on, the user is encouraged to try to correct the interference by one or more of the following measures:

- Reorient or relocate the equipment.
- Increase the separation between the equipment and receiver.
- Connect the equipment to an AC outlet of a different mains circuit from the main circuit/outlet providing power to the receiver.
- Consult the dealer or an experienced radio/TV technician for help.
- Changes or modifications to this equipment not expressly approved by Andover for compliance will void the user's warranty.

Caution

Changes or modifications to this equipment not expressly approved by Andover for compliance will void the user's warranty.

This product can be recycled. Products bearing this symbol must NOT be thrown away with normal house hold waste. At the end of the product's life, take it to a collection point designated for the recycling of electrical and electronic devices. Find out more about return and collection points through your local authority.

The European Waste Electrical and Electronic Equipment (WEEE) Directive was implemented to dramatically reduce the amount of waste going to landfills, thereby reducing the environmental impact on the planet and on human health. Please act responsibly by recycling used products. If this product is still usable, consider giving it away or selling it.



Introduction

We're really pleased that you have chosen Spinbase. It is all you need to enjoy great sound from your Turntable or Portable Record Player, Bluetooth device, and any wired analog source you may wish to add. Combining Spinbase with the Andover Spindeck Turntable creates a simple and affordable playback system that is easy to set up, sounds great, and is a snap to use.

If you need a place to put your Spinbase, we also offer a matching Spinstand that provides a solid platform for Spinbase while providing storage for up to 150 LPs.

Adding our Songbird WiFi Streaming adapter (sold separately) will give your Spinbase access to the Worldwide Web of High-Resolution entertainment from the most popular streaming services and internet radio stations.

Contact your local dealer, or check out our website for more information on these accessories.

We sincerely hope that you will be overjoyed with the years of great-sounding, simple-to-operate, musical entertainment that Spinbase will provide.

To get the most from Spinbase, be sure to thoroughly review this manual and heed the important safety instructions. If you have any questions not covered here please contact Andover Audio support via email (support@andoveraudio.com) or phone (+1 978.775.3670).

With the proper care and operation, your Spinbase will provide many years of trouble-free enjoyment.

Please save the carton and original packaging in case you ever need to move or ship your unit.

About Andover Audio

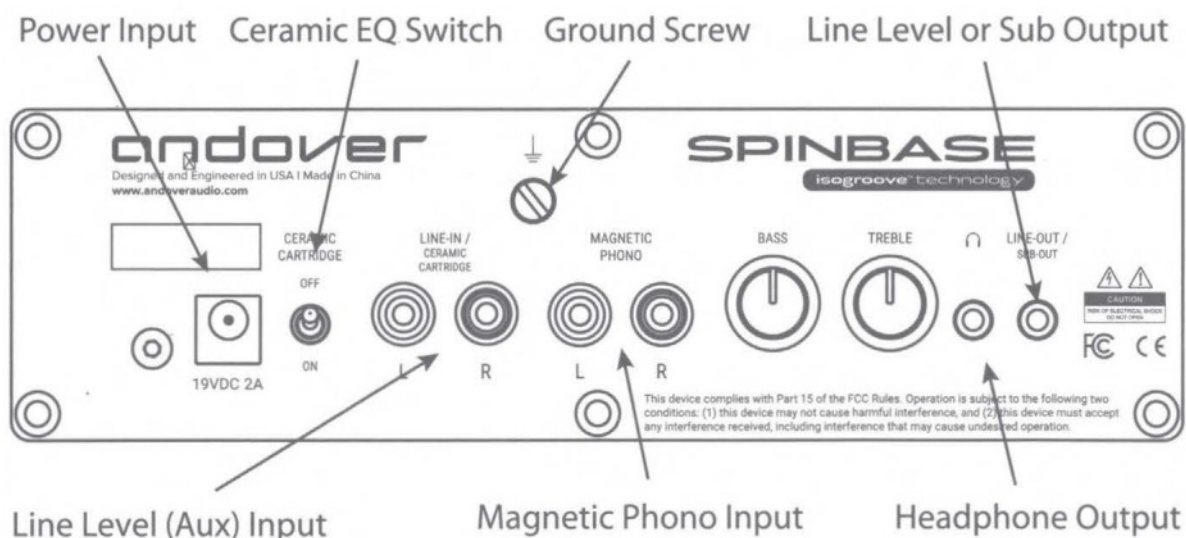
Since 2012, we at Andover Audio have provided design and manufacturing services behind the scenes to some of the most recognized brands in mobile, professional, and high-performance consumer audio. We now focus our award-winning skills on our own product line that artfully blends exceptional sound with distinctive design.

In the Box

- Spinbase main unit
- AC Power supply
- RCA signal cable

Rear Panel

Rear Panel Connections



- POWER INPUT** – Connect the provided DC Power supply here first, then plug the supply into the wall outlet.
- CERAMIC EQ SWITCH** – If your Record Player has a Ceramic Cartridge, flip this switch to ON . Leave it OFF for all other inputs. See pg.8 for more detail.
- LINE IN** – Use this input to connect a Turntable that has a built-in Phono Preamp, the Line-Out from a Record Player, or any Line Level source such as a CD player or Streaming Audio accessory.
- MAGNETIC PHONO INPUT** – Connect to a high-quality turntable equipped with a Magnetic Phono Cartridge that does not have a built-in preamp, or has its preamp bypassed.
- GROUND SCREW** – Connect the GROUND wire from turntables with this feature to reduce hum.
- HEADPHONE OUTPUT** – Connect headphones here. Plugging a device into this jack will turn off the built-in speakers.
- LINE OR SUB OUTPUT** – Use this jack to connect a subwoofer, or to connect external powered speakers or amplifiers.

How to Connect your Turntable

Spinbase can be used with many different types of Turntables or Record players. The term Record Player describes an all-in-one device containing speakers. A Turntable is a component that requires connection to a speaker or amplifier. How you connect it to Spinbase depends on the Turntable or Record Player type you have.

1. Component Turntable with Magnetic Cartridge

This is the most common type of turntable typically used with Spinbase.

- Connect the Left and Right Phono Plugs to the pair of input jacks labeled “Magnetic Phono”.
- If your turntable is equipped with a GROUND wire, attach it to the ground screw on Spinbase. If this is not securely attached, you may hear the excessive hum from the speakers.
- Place the Ceramic Cartridge switch in the “OFF” position.

2. Component Turntable with Magnetic Cartridge and built-in preamplifier.

These are also quite common, and you have two options for connection.

- If your turntable does not have a switch to defeat the built-in preamp, connect the turntable’s output to the LINE-IN jacks on Spinbase.
- If your Turntable has a switch that allows you to bypass its built-in preamplifier, place the switch in the bypass mode and connect it as in example 1 above.
- Depending on the quality of your Turntable’s built-in preamplifier, you may want to try both options and use whichever sounds best to you.
- Place the Ceramic Cartridge switch in the “OFF” position.

3. All-in-one Record Player

Spinbase can also dramatically improve the sound of most all-in-one Record Players that already contain built-in speakers.

- Connect the output of your Record Player to the LINE-IN jacks on Spinbase.
- If your Record Player is equipped with a Ceramic Cartridge (Most common for this type of product), place the Ceramic Cartridge EQ switch in the ON position.
- If your Record Player has a Magnetic Cartridge (not common), leave the Ceramic EQ switch in the OFF position.

Using Spinbase

To turn on Spinbase, rotate the central control knob clockwise past the click. The LED pointer on the knob will illuminate to indicate power is on.

All inputs on Spinbase are always active. It is not necessary to switch between inputs. Simply start using the source you want to hear, and turn off the source you don't. You may find this uncommon, but once you become accustomed to it we believe you will find it to be natural and intuitive.

Connecting Bluetooth Devices

Spinbase is easy to connect. No passwords or codes are required.

- Turn Spinbase power on.
- Enter the Bluetooth menu on your phone or another device.
- Select Spinbase.

Once the device indicates it's "connected", you are ready to play.

Please note: If you wish to connect to a different device, you must first "disconnect" or "forget" the original device. This must be done from the original device.

Bass & Treble Controls

Bass and Treble controls are located on the back panel and may boost or cut their respective frequency ranges. The normal position with the unaltered response is indicated by the detent you feel when the controls are centered.

Using Spinbase

Specifications

Description: Integrated Powered Loudspeaker system with Phone Preamp and Bluetooth receiver.

Music Power: 36W total (2 x 18W)

Acoustic Frequency range: 65Hz – 20kHz +/- 3dB (under laboratory conditions)

Phone input impedance: 47k / 1 00pF

Line Input impedance: 20k Ohm

Headphone/ Line Output: 105mW@ 16 Ohms. Frequency Response: 20Hz-20kHz

Power Consumption: 19VDC / 2A

Weight: 5 kg / 11 lbs

82.55 mm | 3.25"
Width: 446mm / 18"
Depth: 356mm / 13.5"

Room Placement

As with any sound system, where it's placed in your room affects how well the sound fills the space. Spinbase features a 270-degree sound field to provide a spacious, room-enveloping performance that defies its compact size. Sound is emitted from both sides and the front of the unit, so be careful not to block the sound from the sides. Although the placement of Spinbase is less complex than a typical component system, following these

simple guidelines will result in the most enjoyable sound quality.

- To ensure the evenest sound coverage, try to place the system near the center of one of the walls. It should be at, or slightly below, ear height for a seated listener.
- Using the optional Spinstand will place the system at the ideal height in most rooms.
- If the unit will be placed in a corner, angle it at 45 degrees so that the speakers on one side are not blocked.
- Keep the sides of the unit unobstructed by solid objects for as much distance as practical, but by at least 12" (~30.5 cm).
- Place the unit on a solid table or component rack. DO NOT use soft vibration isolators or place the unit on a carpet or foam surface. If the support surface is not sufficiently rigid, acoustic feedback may occur.
- Avoid placing the unit in an enclosed bookshelf or cabinet, as this will significantly compromise its performance.

Warranty

Two-Year Warranty

Andover Audio warrants our products against manufacturing defects and workmanship to the initial purchaser for a period of two (2) years from the date of delivery to the customer. Andover Audio will repair or replace the unit as necessary to restore proper operation.

This warranty covers both parts and labor for the warranty period. The warranty excludes physical damage caused by accident or abuse outside of our control, or if the unit is damaged due to incorrect packing.

The warranty also excludes normal wear items such as the stylus and belt on turntable products.

If you think you need warranty service, please contact us to obtain an RMA (Return Merchandise Authorization) by emailing support@andoveraudio.com or calling 978.775.3670. For more information on returns and exchanges, please visit www.andoveraudio.com/pages/returns-and-exchanges.

If your unit was purchased from a local dealer, contact them first. They may be able to resolve some issues without requiring a return.

Service

Should you encounter a problem that you are unable to solve, please contact customer service at support@andoveraudio.com or the dealer that sold you your unit.

If you must return your unit for any reason, it must be safely packed and shipped in its original carton and packing material. Damage that is the result of improper packaging is not covered by the warranty.

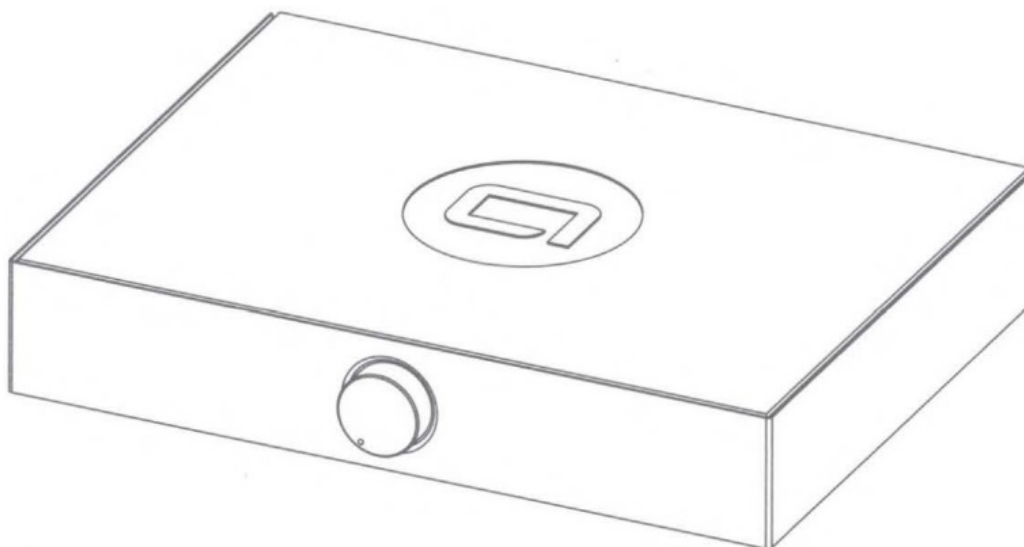
Product Cleaning

Use a soft dry cloth or compressed air. Vinyl surfaces may be cleaned using a mild surface cleaner or a damp cloth.

Do not use harsh or chlorine-based cleaner anywhere on the product. Only clean the exterior of the product.

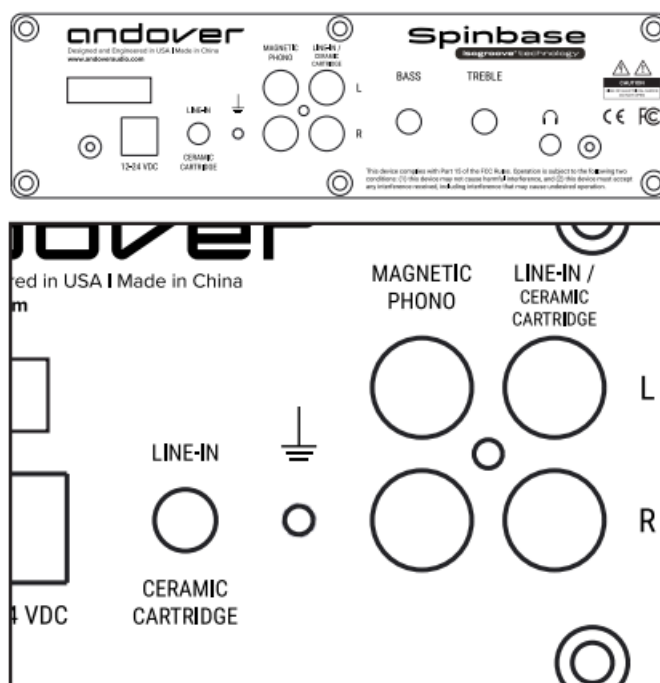
Spinbase Setup

1. Remove Spinbase from its box. Keep the packaging for returns or exchanges.
2. Place Spinbase on a level surface. This is important for your turntable performance.
3. Before turning it on, plug Spinbase into a power outlet using its power adapter.



Connect a Turntable or Record Player

1. Place your turntable on top of Spinbase.
2. Using a turntable with a Magnetic cartridge (most common): Connect your turntable to “Magnetic Phono”. Ensure the switch is set to “Line-In”.
3. Using a turntable with a Ceramic cartridge, or a record player with a line output: Connect it to the Line-In on Spinbase. Set switch to “Ceramic”.
4. Use the ground connector if your turntable supports it.
5. Leave shorting plugs in the “Magnetic Phono” input when it’s not being used.



Connect a Bluetooth Device

1. Connect to “Spinbase” in your Bluetooth settings.
2. Disconnect Bluetooth for another device to pair.



Notice: Some users may experience an unpleasant noise when powering Spinbase on/off while their headphones plugged in. Please be aware.

Two Year Warranty

Andover Audio warrants Spinbase against manufacturing defects and workmanship to the initial purchaser for a period of one (1) year from the date of delivery to the customer. Andover Audio will repair or replace the unit as necessary to restore proper operation. This warranty covers both parts and labor for the warranty period. The warranty excludes physical damage caused by accident or abuse outside of our control. If you think you need warranty service, please contact us to obtain an RMA (Return Merchandise Authorization) by emailing support@andoveraudio.com or calling 978.775.3670. Please visit our website's support section for more information about returns and exchanges.

©2019 Andover Audio, LLC

Thank you for purchasing Spinbase.

If you're new to vinyl or returning to it after a few years, there are some important things to know:

The turntable Phono cartridge is the device on the end of the tonearm that converts record grooves to an electrical signal. The most commonly equipped cartridges are Magnetic and Ceramic. Spinbase is compatible with both, but the connections are different. (Note: Some high-end cartridges, called Moving-Coil, are not compatible with Spinbase.)

MAGNETIC CARTRIDGES – provide higher fidelity than their Ceramic siblings. They also track your records with less weight and are better at preventing record wear. They provide very little electrical output and require a circuit known as an RIAA preamplifier to boost and equalize the signal. Spinbase has this preamplifier built-in. If your turntable has a Magnetic cartridge, connect it to the “Magnetic Phono” input on Spinbase. Ensure the back switch is set to Line-In.

Some turntables also have their own preamplifiers built-in and do not require the use of the preamplifier in Spinbase. If your turntable has a switch on it marked “Line” and “Phono”, your turntable has a built-in preamplifier. You have two choices:

1. Switch your turntable to “Line” and plug it into the Line-In input on Spinbase; or,
2. Switch your turntable to “Phono” and plug it into the “Magnetic Phono” input, utilizing the preamplifier in Spinbase.

In most cases, plugging your turntable into the Spinbase Phono input and ensuring the back switch is set to LineIn will give the best sound. Try them both and use what sounds best to you.

CERAMIC CARTRIDGES – are generally found in lower-priced turntables and record players. They do not perform as well as a good magnetic cartridge, but can still give a satisfying performance with Spinbase thanks to its exclusive Ceramic Equalization feature. Ceramic cartridges have high output voltage, and turntables or record players equipped with one should be plugged into the Line-In input on Spinbase. The sound quality will be improved when setting the back switch to “ON”. If you are NOT using a Ceramic cartridge, leave the back switch to the Line-In position.

SHORTING PLUGS – The shorting plugs supplied with Spinbase should remain plugged into the “Magnetic Phono” input whenever it is unused, such as when you are using the Spinbase Line-Input or a Bluetooth device. Failure to do this will result in excess electronic background noise.

STAYING GROUNDED – Because Magnetic Phono cartridges have such a low output, the Phono input is much more sensitive to any noise or ground hum than other inputs. Because of this, many turntables are equipped with a grounding wire or have a screw to attach one. If your turntable requires grounding, attach the grounding wire from the ground thumbscrew on Spinbase to the ground screw on your turntable. Some turntables are not equipped with ground wires, and instead have their ground supplied through the RCA plugs.

CONTACT SUPPORT – There are so many different turntables, record players, and other sources available to use with Spinbase that it's impossible to cover all the possibilities here. If you have any operation, connection, or

performance questions or concerns don't hesitate to reach out to us. We're ready to help!

support@andoveraudio.com | +1 978.775.3670

FCC STATEMENT: This equipment has been tested and found to comply with the limits for a Class B digital device, pursuant to part 15 of the FCC Rules. These limits are designed to provide reasonable protection against harmful interference in a residential installation. This equipment generates, uses, and can radiate radio frequency energy and, if not installed and used in accordance with the instructions, may cause harmful interference to radio communications. However, there is no guarantee that interference will not occur in a particular installation. If this equipment does cause harmful interference to radio or television reception, which can be determined by turning the equipment off and on, the user is encouraged to try to correct the interference by one or more of the following measures:

- Reorient or relocate the receiving antenna.
- Increase the separation between the equipment and receiver.
- Connect the equipment into an outlet on a circuit different from that to which the receiver is connected.
- Consult the dealer or an experienced radio/TV technician for help.



Thank you for purchasing our product.

Customer reviews help other customers determine what products are the best value for their needs.

It would help us greatly if you could leave an honest review on the website on which you made your purchases. Leaving less than a five-star review? We appreciate your sincerity, and we would like to hear from you directly to better understand why the product didn't meet your full expectations. Your feedback is important to our mission of offering high-quality audio products that provide long-lasting enjoyment.

Cheers,



Contact us: support@andoveraudio.com

978.775.3670

Andover Audio, L.L.C.


15 High Street North Andover, Massachusetts 01845

www.andoveraudio.com | support@andoveraudio.com 1978.775.3670

Andover is a registered trademark of Andover Audio, L.L.C.

Andover Audio subscribes to a program of continuous improvement. As a result, some product features and characteristics may change without prior notice.

Documents / Resources

	<p>andover SPINBASE Turntable Speaker System [pdf] Instruction Manual SPINBASE, Turntable Speaker System, SPINBASE Turntable Speaker System, Speaker System, System</p>
---	---

References

-  [Andover Audio Support Center](#)
-  [Audio Equipment Company Massachusetts -Turntable For Music Enthusiasts](#)

