



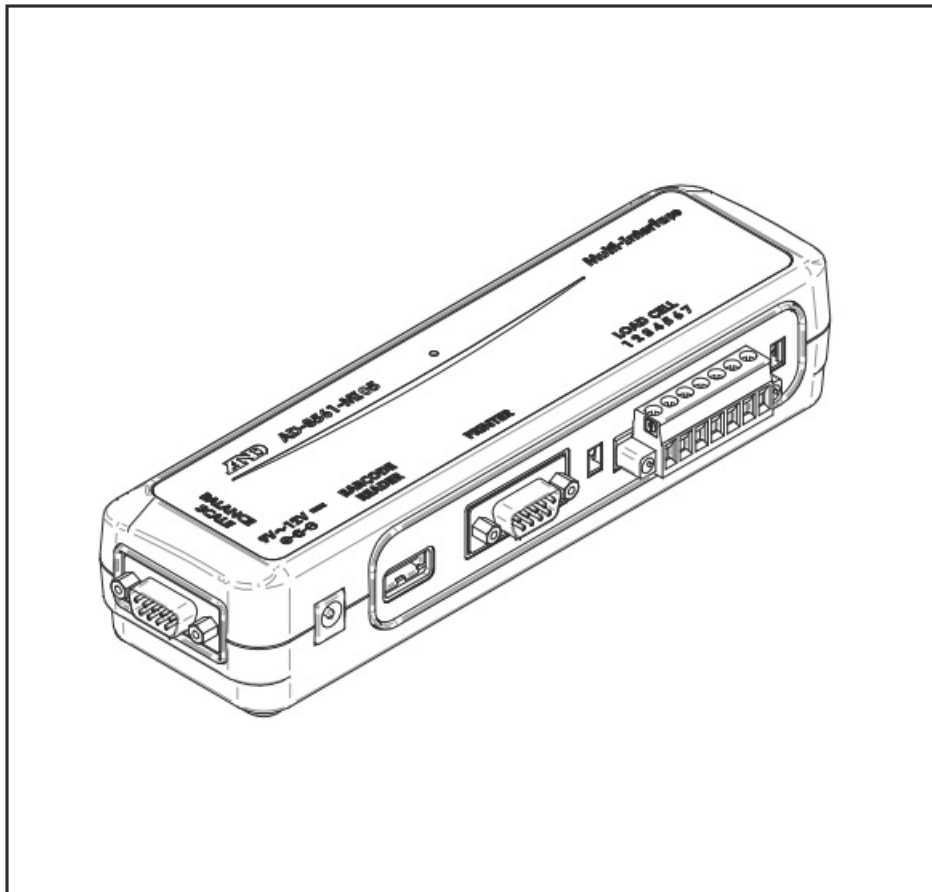
AND AD 8561 MI05 Multi Interface GC Series Weighing User Manual

[Home](#) » [AND](#) » AND AD 8561 MI05 Multi Interface GC Series Weighing User Manual 



A&D Company, Ltd.

AD 8561 MI05 Multi Interface GC Series Weighing
User Manual





Contents

- 1 Safety Precautions
- 2 Introduction
- 3 About the AD-8561
- 4 Part Names and Accessories
- 5 Connection to Other Device
- 6 Communication Specifications
- 7 Functions
- 8 Function list
- 9 Troubleshooting
- 10 Specifications and Options
- 11 Documents / Resources
 - 11.1 References
- 12 Related Posts

Safety Precautions

This manual describes the conditions to follow so that you can prevent damages to yourself or anyone else and handle the product safely. To prevent accidents due to inappropriate handling, this manual and the product contain the following warning signs. The meanings of the warning signs are as follows.

 Warning	A potentially hazardous situation which, if not avoided, could result in death or serious injury.
 Caution	A potentially hazardous situation which, if not avoided, may result in personal injury or property damage.

1. No parts of this manual may be reproduced without permission. This manual may not be copied, modified, or translated without the written permission of A&D Company, Limited.
2. The contents of this manual are subject to change without notice.
3. Please contact A&D if you notice any uncertainty, errors, omissions, etc. in this manual.
4. A&D Company, Ltd. bears no liability for direct, indirect, special, or consequential damages due to the operation of this product, even if advised of the possibility of such damage regardless of (3) above.



- Do not disassemble the AD-8561. Disassembling may cause damage to the product. Damage caused by disassembling will not be covered by the warranty.
- If a problem has occurred and you cannot resolve it, stop using the AD8561.

Introduction

This manual describes how the AD-8561 multi interface works and how to get the most out of it in terms of performance. Read this manual completely before using the AD- 8561. For the information on the AD 8561 and the related products, please refer to the A&D website (<https://www.aandd.co.jp/>).

About the AD-8561

2-1. Features

The following operations are enabled when the AD 8561 is connected to the RS-232C output on the GC-series (hereinafter called 'the counting scale').

Transmitting and receiving data from D sub 9 pin

(between the counting scale and a connected device such as a printer)

Sending texts to the counting scale from USB Type-A with a barcode reader or keyboard (from a barcode reader/keyboard to the counting scale)

Sending weighing data from an external scale connected to the terminal block to the counting scale (from an external scale to the counting scale).

Each color of the LED lights shown below indicates different status.

LED Color	Status of the AD-8561	
Blue	Activating	Communication available
White	A barcode reader or keyboard is connected (HID setting: key mode)	Communication available
Yellow	A barcode reader or keyboard is connected (HID setting: command mode)	Communication available
Yellow (blinking)	An input that exceeds 64 digits is received from a keyboard (Command mode/Refer to '5-2. USB Connector)	Restart the device.
Red (blinking)	Not-supported devices connected to USB Type-A	Immediately remove the USB drive
Red	Error	Communication unavailable Restart the device.

2-2. Precautions for Use

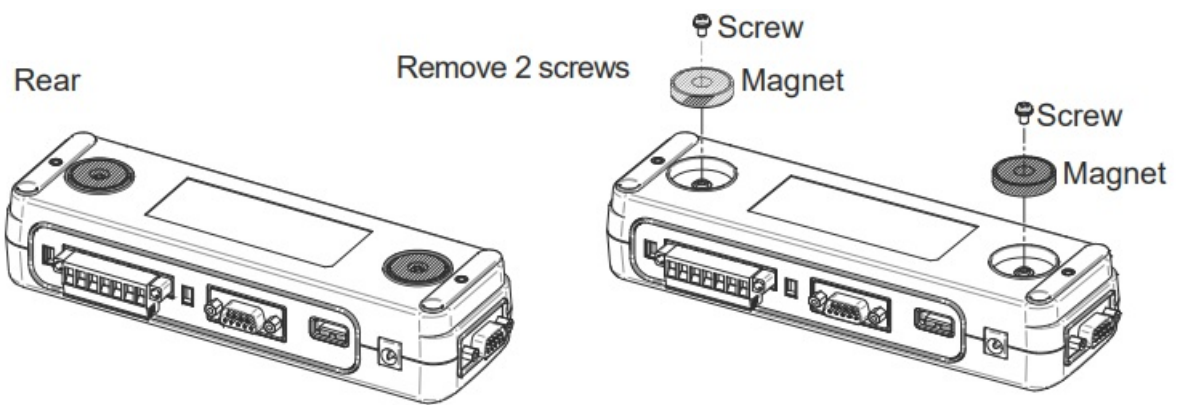
- The power for AD 8561 can be supplied from the counting scale with an accessory cable. When another cable is used, an AC adapter for power supply may be required. (Refer to '4-1. Connection to Power Supply')
- Make sure to check the rating of the AC adapter before attaching it.

Inappropriate power supply may cause malfunction or damage to the internal circuitry.

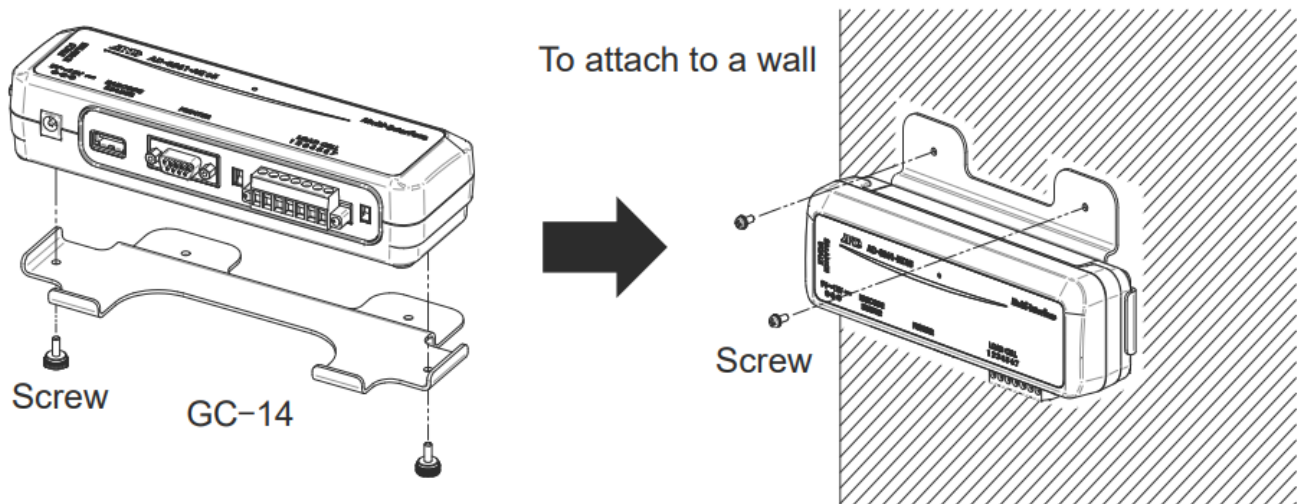
Magnets are used for simple fixation.

*When there is any magnetically sensitive device such as a balance nearby, they can affect the device. In this case, remove the magnets from the AD-8561.

<How to remove the magnets for attaching the interface>

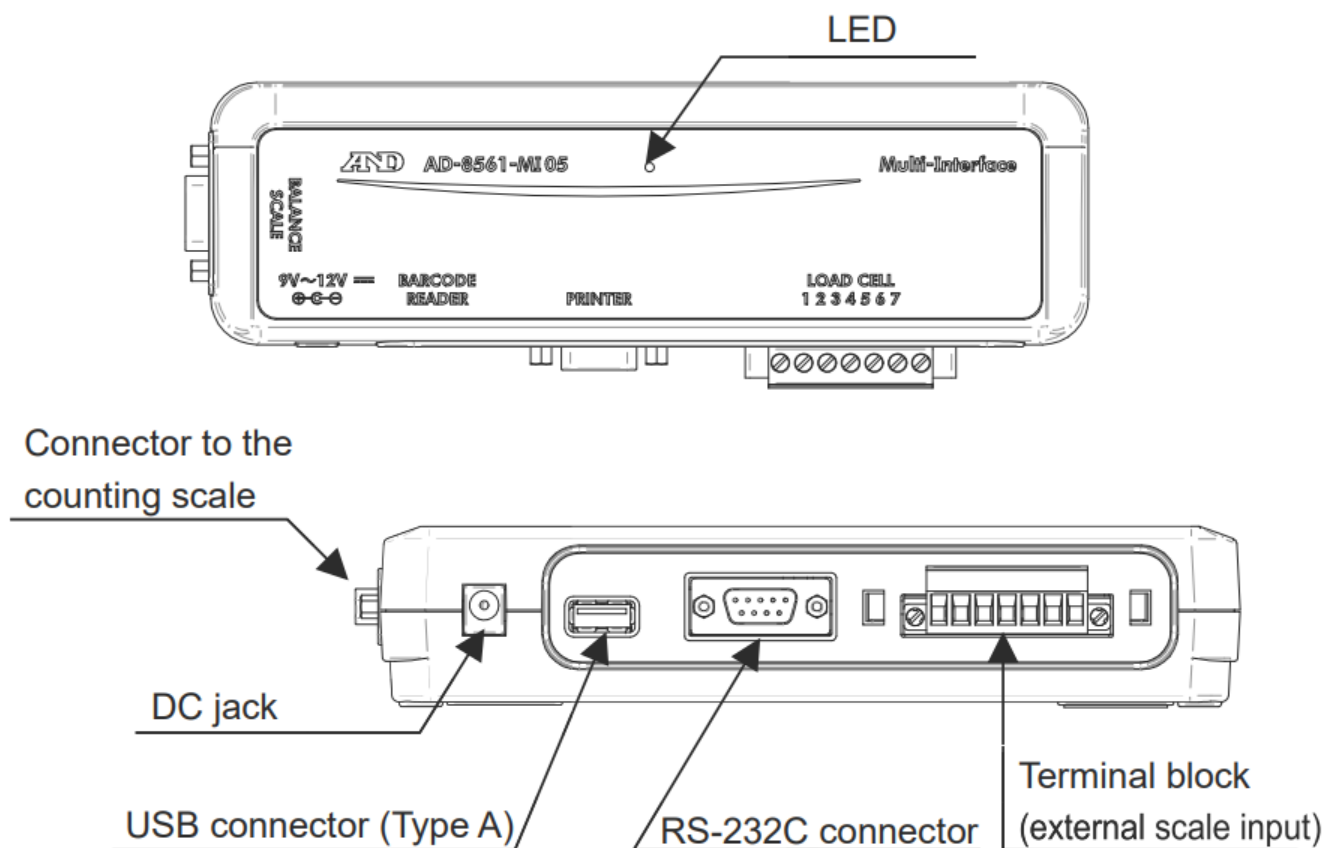


- Magnets are not strong enough to secure the interface to wall. To attach to a wall, first attach the AD-8561 to a GC-14, an option for the counting scale, with screws, and then attach the GC 14 to a wall (with screws or by hanging it on a wall). For the details, refer to the instruction manual for the GC 14.



Part Names and Accessories

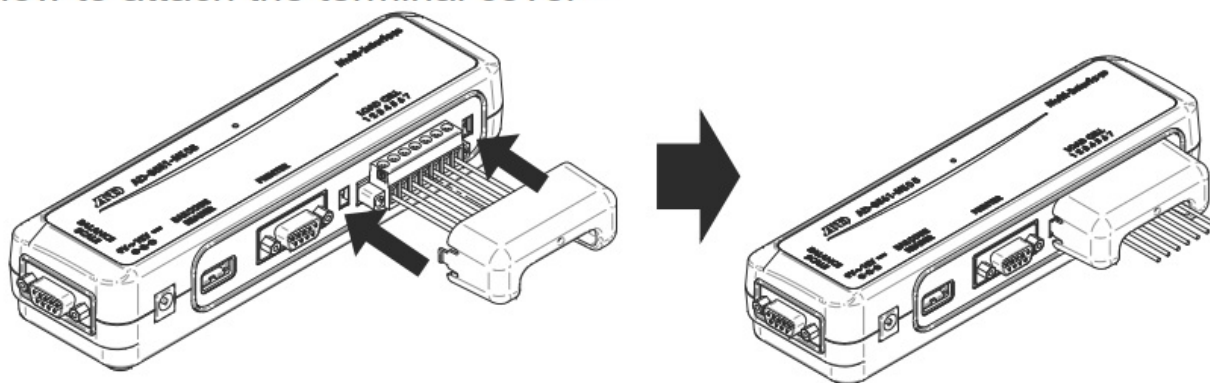
3-1. Main Unit



3-2. Accessories

- Instruction manual (This manual)
- Cable (1m, D-sub 9 pin, female-female, for connecting to the counting scale)
- Terminal block cover

<How to attach the terminal cover>



Plug in and secure to the holes on the right and left sides of the terminal

Connection to Other Device

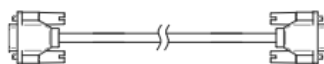
4-1. Connection to Power Supply

- Supply power from the counting scale by connecting an accessory cable to the connector on the AD 8561 (use a D sub 9 pin).

Counting scale

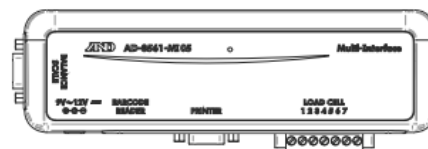


Accessory cable



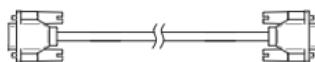
Supply power

AD-8561



- When the accessory cable is not used, an AC adapter should be used to supply power from the DC jack. When using a commercially available cable to which the 9th pin of the connector is not connected
- When communicating between the counting scale and AD-8561 at a distance longer than 1m
- * A cable longer than 1m, which is optionally available, is not connected to the 9th pin of the connector and therefore requires power supply from an AC adapter. (Refer to (3) in '8-3. Optional Devices')

Counting scale

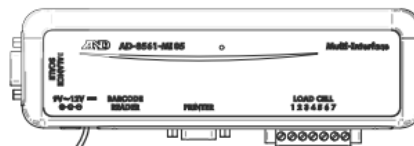
Cable with 9th pin unconnected

AC adapter



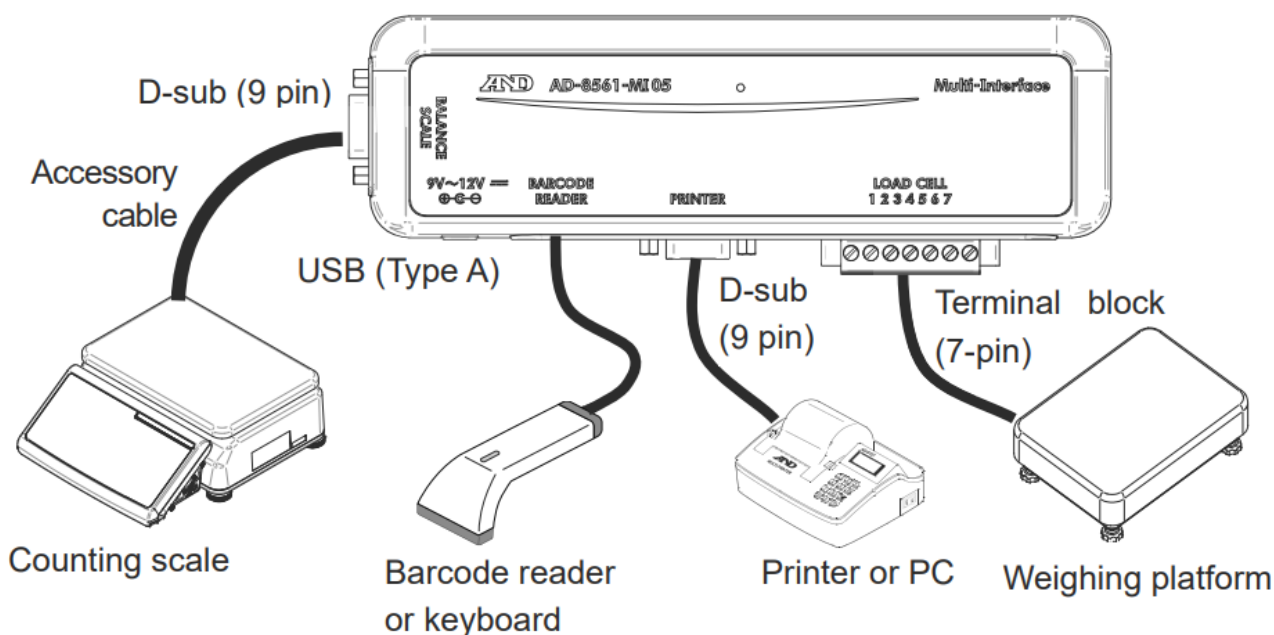
Supply power

AD-8561



- Make sure to check the specifications when using an AC adapter. An AC adapter with a center negative plug that outputs DC 9 to 12V is usable.
- The main unit is activated when it is connected to the counting scale or when an AC adapter is inserted into the DC jack. Once it is activated, a blue LED light is turned on.
- To restart the interface, remove the cable or AC adapter and confirm that the LED light is turned off. Then, reconnect it to turn the power on.

4-2. Connected Devices



- Set the function F-06-01 of the counting scale to other than '3.'
- Set the function F-06-03 of a counting scale to '1.'

Communication Specifications

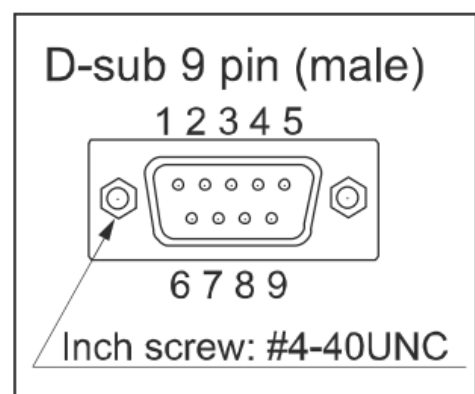
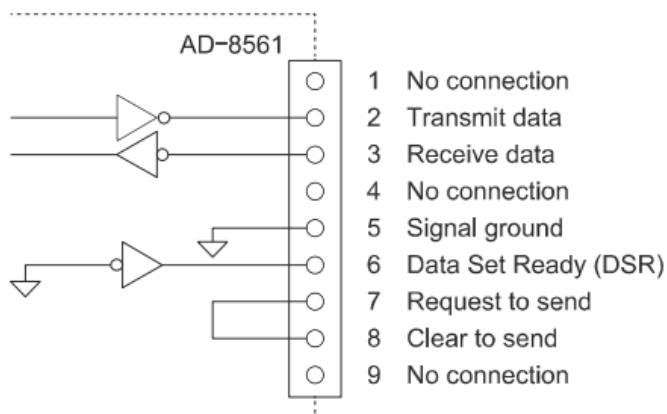
5-1. RS-232C Connector (D-sub 9 pin): PRINTER



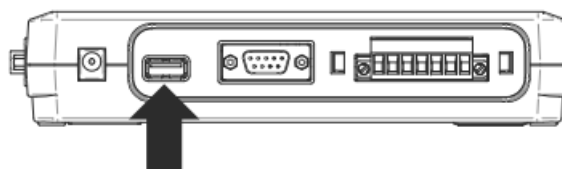
Communication between the counting scale and a printer (or PC) is operable with an RS 232C interface.

- Transmission system: EIA RS
- 232C
- Transmission form: Asynchronous, bidirectional, half-duplex transmission
- Data format:

Pin layout



5-2. USB Connector (Type A): BARCODE READER



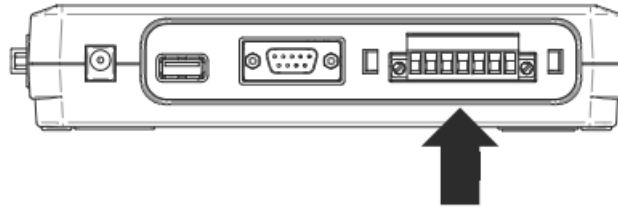
Attach a barcode reader or keyboard to send entered text to the counting scale.

- Transmission system : USB 2.0
- Connector : Type A
- Device class : HID

Once the device is connected, the color of the LED light changes from blue to white or yellow.

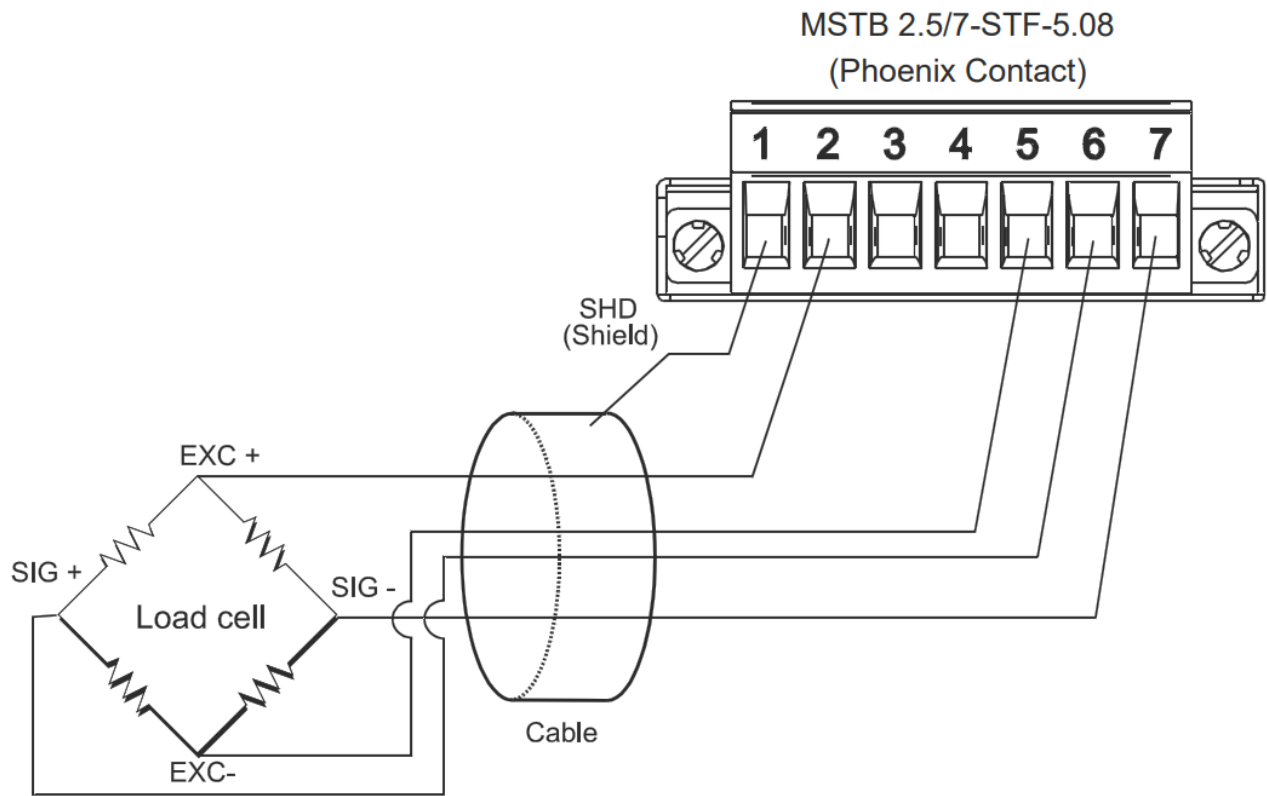
- The color does not change if the AD
- 8561 cannot recognize the connected
- device. In this case, restart the AD-8561 and reconnect the device..
- Red LED light blinks when a device of not supported device class is connected.
- Note that data may be corrupted if a USB drive is mistakenly attached.

5-3. External Scale (terminal block): LOAD CELL

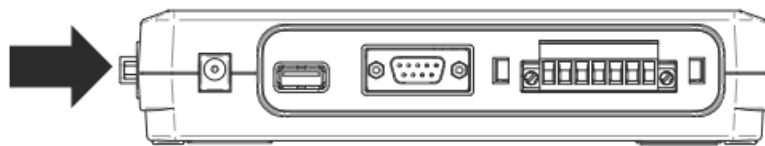


- Connect an optional weighing platform (SB series, etc.) to the terminal block to send weighing data to the counting scale.
- For how to use the external scale and the specifications of usable weighing platform, refer to the instruction manual of the counting scale.
- Pin layout

Terminal	Connection signal
1	Shield
2	EXC+
3	No connection
4	No connection
5	EXC-
6	SIG+
7	SIG-



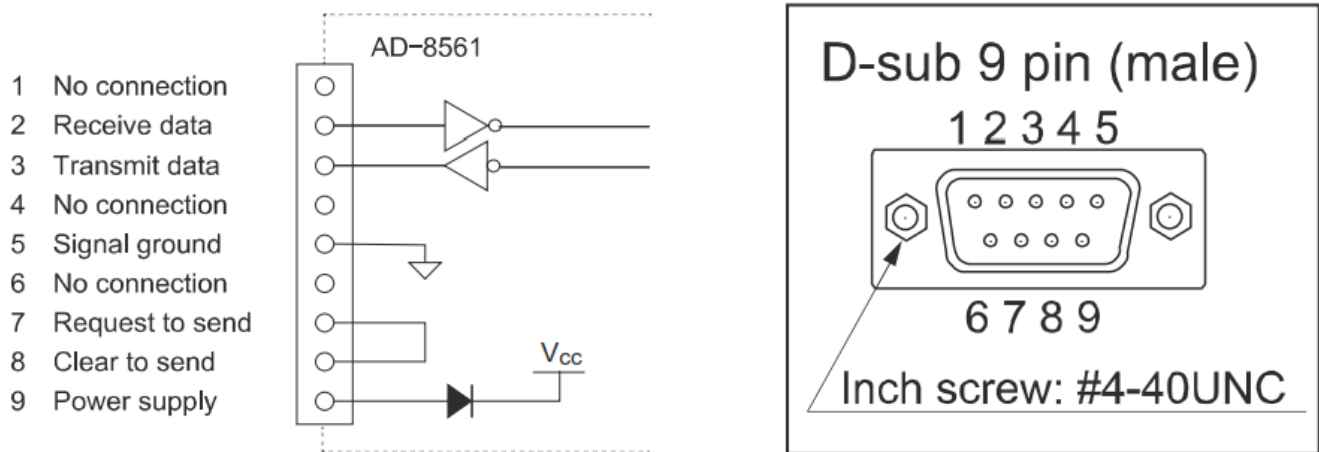
5-4. Connector for the Counting Scale (D-sub 9 pin): BALANCE / SCALE



- This performs communication with the counting scale via RS 232C interface.
- Transmission system and transmission form are same as those mentioned in '5-1. RS-232C Connector (D-sub 9 pin): PRINTER.'
- Signal type:

Baud rate	19200 bps
Bit length	8 bit
Parity	None

Pin layout

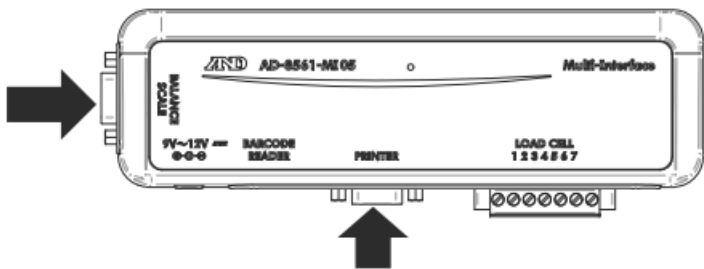


- Use the included cable (D sub 9 pin, 1m) to connect to the counting scale.
- Supply power to the AD-8561 from the 9th pin of this connector. (Refer to ‘4-1. Connection to Power Supply’)
- When operating the function setting for the AD-8561 with this connector, supply power with an AC adapter by connecting to a PC instead of the counting scale with a crossover cable.

Functions

The function setting can be operated with commands.

1. Connect a PC to the AD 8561 to send commands for the function list.”



Response	Meaning	Action to take
<AK>	Saved	Restart the device to apply the settings.
EC, EI	Undefined command	The command is not correct.
EC. E2	Failed	Restart the device and redo the procedures. If the problem persists, there may be a problem with the internal circuitry.

2. ‘<AK>’ is returned when the setting is saved.
If there is no response, check the communication settings to send commands again
3. The communication settings are saved and applied after the AD8561 is restarted.

Function list

Applicable connectors	Setting details		Commands
[PRINTER] RS-232C connector (D-sub 9 pin)	Baud rate	2400 bps ◆	@MIO24
		4800 bps	@MI048
		9600 bps	@MI096
		14400 bps	@MI144
		19200 bps @MI192	
		28800 bps	@MI288
		38400 bps	@MI384
	Data length parity	7 bit, EVEN ◆	@MI7EV
		7 bit, ODD	@MI7OD
		8 bit, no parity	@MI8NO
[BARCODE READER] USB connector (Type A)	HID mode	Key mode • (when searching and registering ID/items with the counting scale)	@MICKM
		Command mode (when sending commands to the counti ng scale)	@MICCM

Troubleshooting

Phenomenon	Possible cause	Action to take
LED does not light blue when power is supplied.	Poor connection of power source	Turn on the power to the counting scale. If the problem persists, switch to an AC adapter for power supply.
		Check the output rating of the AC adapter.
Red LED lights	Internal circuitry error	Restart the device.
LED does not light white or yellow.	Connection error	Check the specifications of the USB device.
When a barcode reader is connected, the device does not work	Insufficient power supply	Switch to AC adapter for power supply.
Communication fails.	Connection error	Check the wiring of connector.
	Communication settings	Reconfirm communication settings are different for each channel.
External scale not working	Connection error	Check the wiring.
		The counting scale is not set to the AD-8561 connection mode.

Specifications and Options

8-1. Specifications

Model	AD-8561-M105
Power source	AC adapter (DC 9 V to 12 V / 500 mA or higher)
Temperature range	-10°C to 40°C (No condensation should be observed)
Display (LED)	Power on (blue), USB Type A connected (white/yellow), Error (red)
Power consumption	Approximately 0.2 VA (when USB Type A is not connected)
Size (W x D x H)	195 x 60 x 40 [mm]
Weight	Approximately 190 [g]
Materials	Case: ABS, magnets: ferrite, magnet support hole: iron
Items included	D-sub 9 pin cable (for connecting a counting scale), instruction manual
Connectable counting scale	GC series counting scale (refer to the A&D website)
Connector form	Connector for a counting scale/RS-232C: D-sub 9 pin (male) USB host: Type A External scale: Terminal (7 pin)

8-2. Related Software

The following software can be downloaded from the A&D website (<https://www.aandd.co.jp/>).

(1) WinCT (data processing software for balances and scales) Support > Software > WinCT.

8-3. Optional Devices

1. AC adapter

Check for the latest adapter in the products page on the A&D website.

(2) Dsub 9 pin cable for connecting a counting scale Same cable as the accessory 1 m : A X KO2741 100

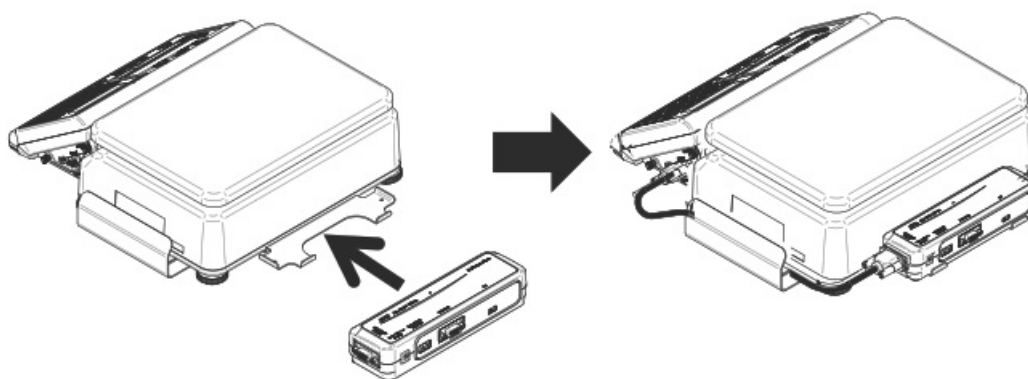
* If a longer cable is required, a 2-m/5-m cable listed in (3) is usable. However, when a cable listed in (3) is used, power cannot be supplied from a counting scale.

A separate AC adapter should be connected for power supply.(3) Dsub 9 pin cable for RS 232C 2 m : A X KO2466 200 5 m : A X KO2466 500

* If a 1-m cable is sufficient, a cable mentioned in (2) is usable.

2. GC

14 (mounting hardware exclusively for GC, option for GC series counting scales) The GC-14JA should be attached to the counting scale as follows.



(5) AD8561-11 (terminal block cover) Same cover as the accessory.

A&D Company, Limited

3-23-14 Higashi-Ikebukuro, Toshima-ku, Tokyo 170-0013, JAPAN Telephone: [81] (3) 5391-6132 Fax: [81] (3) 5391-1566

A&D ENGINEERING, INC.

4622 Runway Boulevard Ann Arbor, Michigan 48108, U.S.A.

Telephone: [1] (800) 726-3364

A&D INSTRUMENTS LIMITED

Unit 24/26 Blacklands Way, Abingdon Business Park, Abingdon, Oxfordshire OX14 1DY United Kingdom

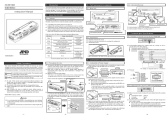
Telephone: [44] (1235) 550420 Fax: [44] (1235) 550485

A&D AUSTRALASIA PTY LTD

32 Dew Street, Thebarton, South Australia 5031, AUSTRALIA

Telephone: [61] (8) 8301-8100 Fax: [61] (8) 8352-7409

Documents / Resources



[AND AD 8561 MI05 Multi Interface GC Series Weighing](#) [pdf] User Manual
AD 8561 MI05 Multi Interface GC Series Weighing, AD 8561 MI05, Multi Interface GC Series Weighing, GC Series Weighing, Series Weighing

References

-  [A&D Company, Limited](#)