

ANCHORLIFT®
Technic
**WS60C External
Thruster**



Anchorlift WS60C External Thruster Instruction Manual

[Home](#) » [Anchorlift](#) » Anchorlift WS60C External Thruster Instruction Manual 

Contents

- [1 Anchorlift WS60C External Thruster](#)
- [2 Product Specifications](#)
- [3 FAQs](#)
- [4 Instructions](#)
- [5 Documents / Resources](#)
 - [5.1 References](#)
- [6 Related Posts](#)



Anchorlift WS60C External Thruster



Product Specifications

- Model: WS60C
- Power Supply: DC 12-48V
- Recommended Tools: Battery drill, drill bits (2.5mm, 3.5mm, 5mm, 12mm), threading tool, screwdriver, sealant

FAQs

Q: What tools are needed for installation?

A: Tools required include a battery drill, various drill bits, threading tool, screwdriver, and suitable sealant.

Q: Can the motor be run out of water?

A: Avoid running the motor for longer than 5 seconds out of water. Follow specific model instructions for wiring and operation.

Q: What if the motor turns the wrong way?

A: Swap the positions of the brown and blue motor cables to correct the direction.

Instructions

Tools needed for an installation:

Battery drill with different drill bits. 2.5mm – 3.5mm – 5mm – 12mm drill bit. 6mm threading loss. Small flat screwdriver. Tools for electrical work and general hand tools. Polyurethan sealant is suitable for under saltwater use.

• STEP 1:

- Find a good location for the motor. It's important that the motor can make free water flow out from the propeller.
- Make sure there are no obstacles on the inside so you don't hit any wires or tubes.



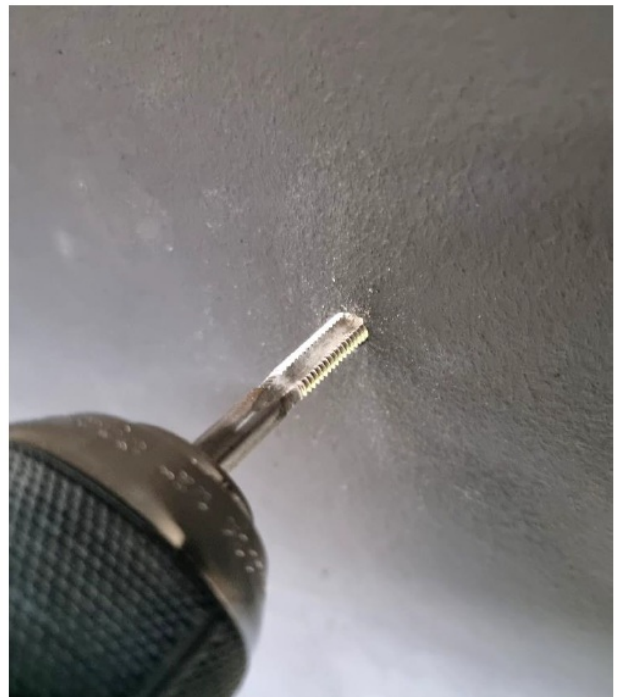
• STEP 2:

- Once you have found a good location use the motor bracket, mark the 2 holes for the 6mm mounting bolts.
- Make sure the bracket is mounted the same way as in the picture, a square point on the bracket pointing out.
- The bracket you use for marking the holes must be used on the same side.



• **STEP 3:**

- Drill holes for the motor bracket, use 5mm drill bit, then use the 6mm threading loss and make treads in the holes



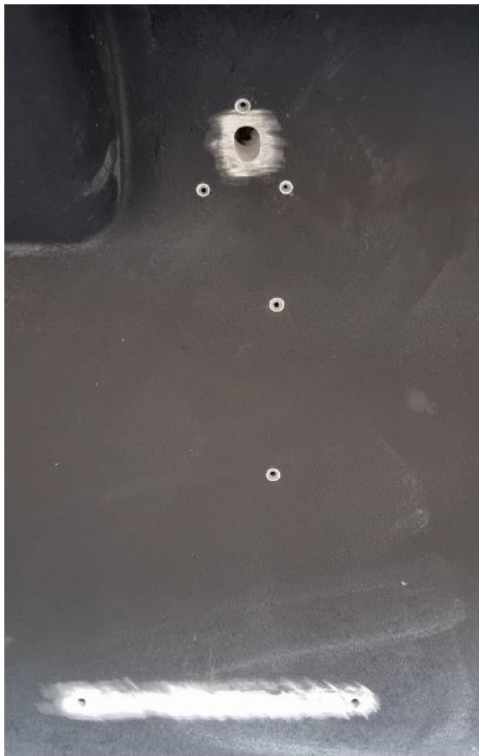
• **STEP 4:**

- Making holes for cable clamp and cable inlet.
- Plan where you want the cable clamps and the cable inlet.
- NOTE !! The cable inlet must always be over the water line.



• **STEP 5:**

- Drill holes for screws for cable clamp 3,5mm. Cable inlet cover 2,5mm. Hole for motor cable 12-13mm.
- Remove antifouling where the sealant will be. Note !! The hole for the cable must be angled down so the motor cable will lay flat into the transom.



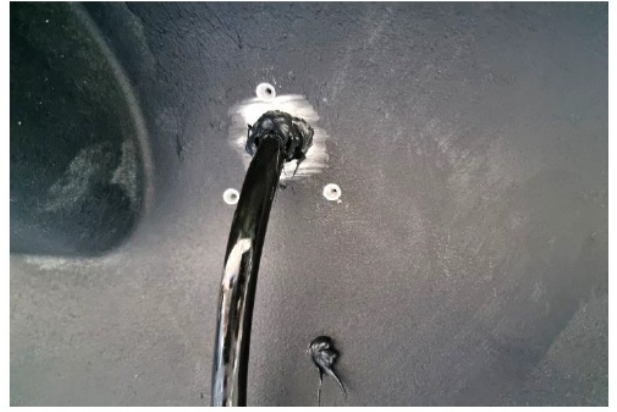
• **STEP 6:**

- **Mounting motor bracket, cable clamp, and cable inlet cover.**
- Ad sealant under the bracket, bolt holes, and cable clamp hole,
- Mount the motor bracket with 2pcs 6x70mm bolt, since the holes have treads you must screw the bolt in.
- Tighten bolts well, but not too hard so you damage the treads and bracket.



• **STEP 7:**

- **Mounting motor and cable inlet.**
- Mount the motor on the bracket. Put the cable into the cable hole.
- Ad sealant on the hole for the cable clamp and around the motor cable. Mount the cable clamp with screw 4,8x19mm
- Ad sealant on the hole for the cable cover. Before you mount the cable cover have extra sealant on the cable and push
- the cable in and flat against the transom. Mount the cover with 3pcs 3,5x16mm screws.



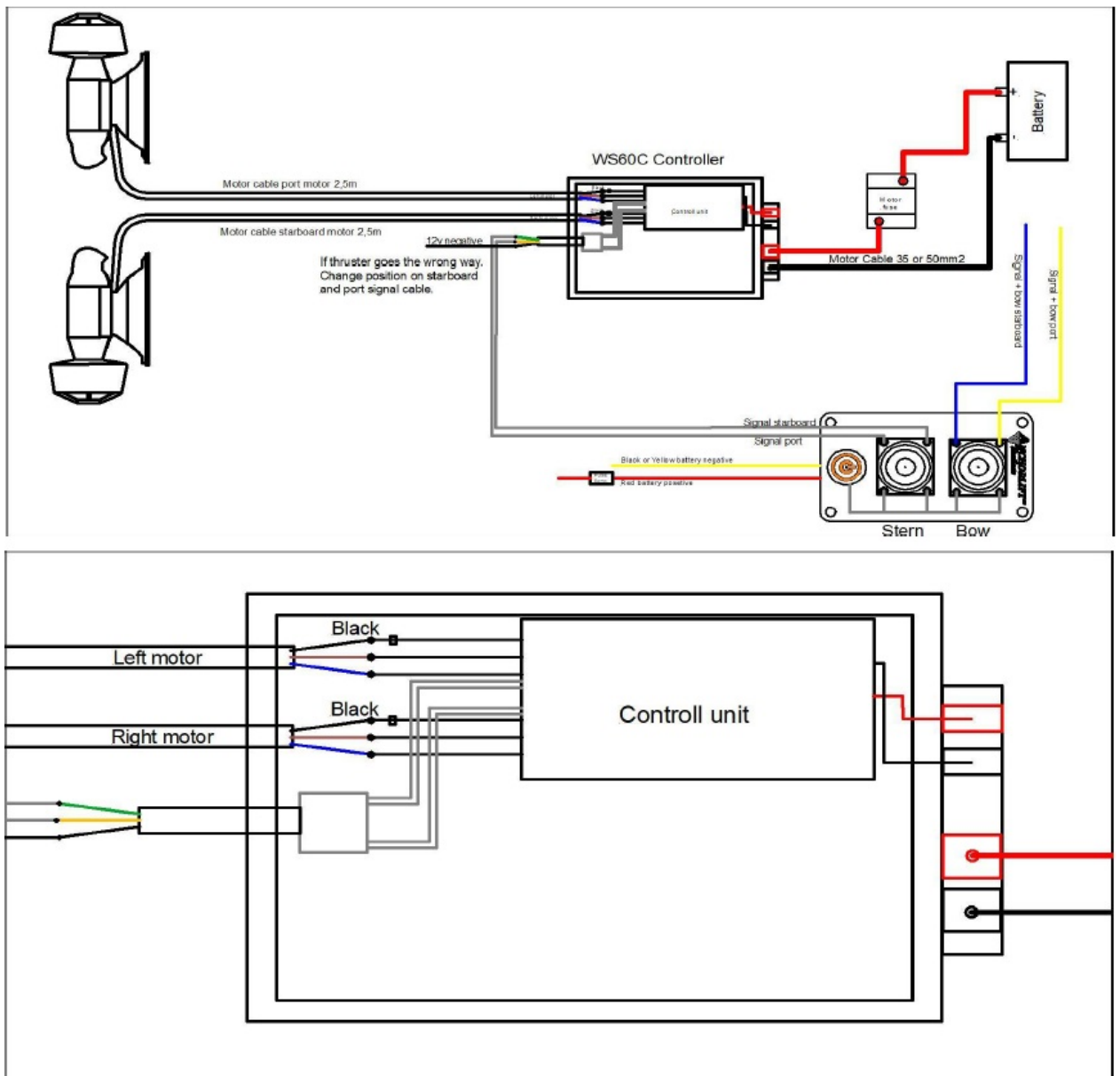
• Step 8

- **Ad zink anode**
- Before mounting zink anode ad marine grease in the screw hole on the motor and on the screw.

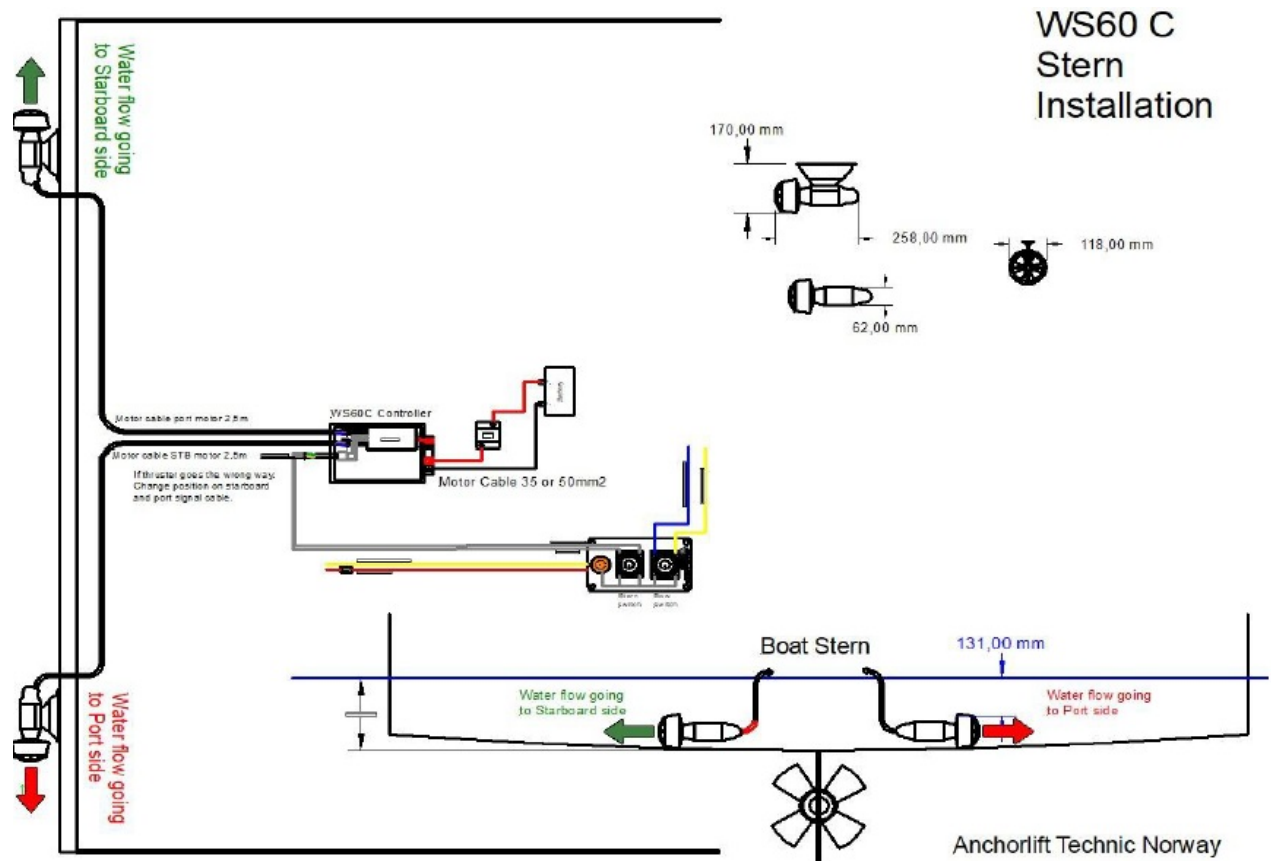


• Step 9

- **Wiring.** NOTE! DO NOT RUN THE MOTOR FOR LONGER THAN 5 SEC WHEN OUT OF WATER.
- Follow the instructions for your model.
- WS60C with DC-DC 12-48vdc converter.
- When replacing your existing bow thruster panel please note if your existing bow thruster is positive or negatively
- controlled. Contact us if any questions.
- **NOTE!** The propeller direction is anti-clockwise when looking at the motor from the propeller side.



- **NOTE!** If the motor goes the wrong way, change the position of the motor cable to brown and blue.
- This instruction is intended as a guideline for an installation, since boats are different it may be your installation
- be a bit different as shown in this guide. If any questions don't hesitate to contact us for questions.



- Anchor lift Technic
- Oslo Norway
- Email: sales@anchorlift.com

Documents / Resources



- [User Manual](#)

This website is an independent publication and is neither affiliated with nor endorsed by any of the trademark owners. The "Bluetooth®" word mark and logos are registered trademarks owned by Bluetooth SIG, Inc. The "Wi-Fi®" word mark and logos are registered trademarks owned by the Wi-Fi Alliance. Any use of these marks on this website does not imply any affiliation with or endorsement.