



ANALOG WAY Zenith 100 Multi Screen and Multi Layer User Guide

[Home](#) » [ANALOG WAY](#) » ANALOG WAY Zenith 100 Multi Screen and Multi Layer User Guide 

ANALOG WAY Zenith 100 Multi Screen and Multi Layer



Contents

- 1 THANK YOU
- 2 QUICK SETUP & OPERATION
- 3 ZENITH 100 – REF. ZEN100 / FRONT & REAR PANELS DESCRIPTION
- 4 OPERATION OVERVIEW
 - 4.1 WEB RCS MENUS
 - 4.2 PRECONFIG
 - 4.3 LIVE
 - 4.4 MEMORIES
 - 4.5 MORE FEATURES
- 5 WEB RCS – INSPIRED BY LIVEPREMIER
- 6 START IP STREAMING
- 7 WARRANTY AND SERVICE
- 8 GOING FURTHER WITH THE ZENITH 100
- 9 Documents / Resources
 - 9.1 References
- 10 Related Posts

THANK YOU

for choosing Analog Way and the Zenith 100. By following these simple steps, you will be able to set up and use your 4K60 multi-layer video mixer and seamless presentation switcher within minutes. Discover the Zenith 100 capabilities and intuitive interface while configuring your first show and unleash your creativity for a new experience in show and event management

- 1 x Zenith 100 (ZEN100)
- 1 x Power supply cord
- 1 x Ethernet cross cable (for device control)
- 1 x Web-based Remote Control Software included and hosted on the device
- 1 x Rack mount kit (the parts are stowed in the packaging foam)
- 1 x Quick start guide (PDF version)*

* User Manual and quick start guide are also available on www.analogway.com

CAUTION!

Damage caused by improper rack mounting will not be covered under warranty

QUICK SETUP & OPERATION

Use the Web RCS

The Zenith 100 uses standard ethernet LAN networking. To access the Web RCS, connect a computer to the Zenith 100 using the Ethernet cable. Then on the computer, open an internet browser (Google Chrome is recommended).

Into this internet browser, enter the IP address of the Zenith 100 displayed on the front panel screen (192.168.2.140 by default).

The connection starts.

Often, computers are set to DHCP client (automatic IP detection) mode. You may need to change the IP address configuration on your computer before you can connect. These settings are found in the properties for your LAN network adaptor, and vary by operating system.

The default IP address on the Zenith 100 is 192.168.2.140 with a netmask of 255.255.255.0.

Therefore, you can assign your computer a static IP address of 192.168.2.100 and a netmask of 255.255.255.0 and should be able to connect.

If the connection is not starting:

- Be sure the computer IP address is on the same network and subnet as the Zenith 100.
- Be sure that two devices do not have the same IP address (preventing IP conflicts)
- Check your network cable. You will need a crossover ethernet cable if you are connecting directly from the Zenith 100 to the computer. If a hub or switch is involved, use straight ethernet cables.

Reset the device to default values

To reset the unit to factory settings to get started.

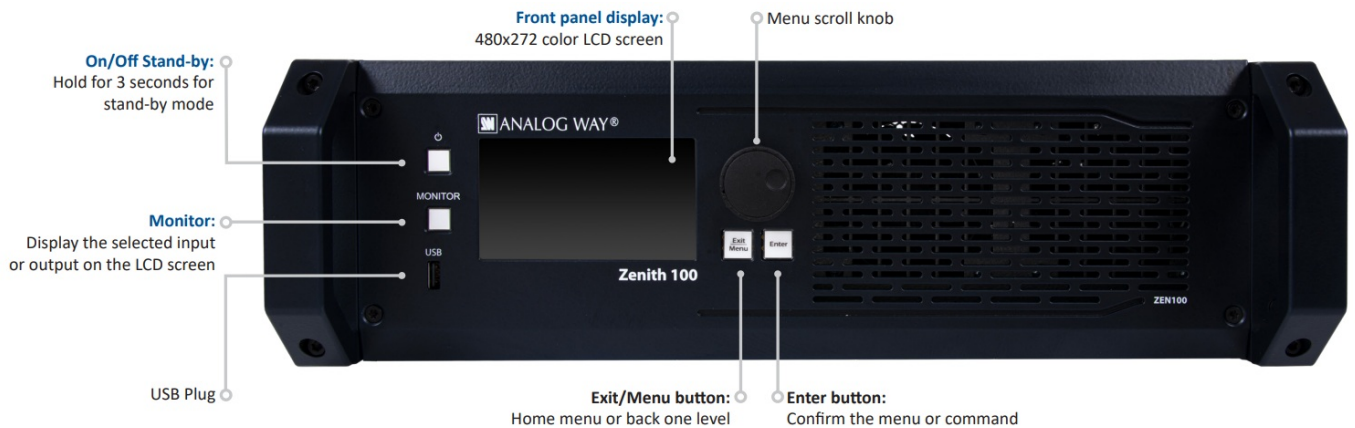
Use the scroll knob and go to Control > Reset to default values > Yes

Firmware update

1. Download the latest Alta 4K firmware on www.analogway.com.

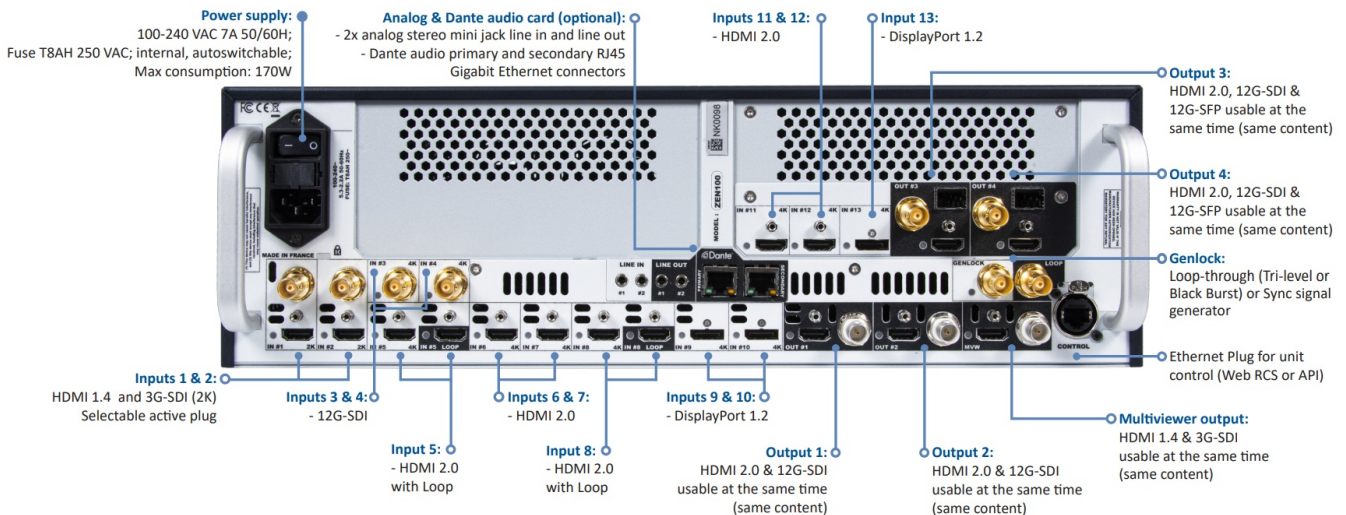
2. Put the updater file on a USB drive.
 3. Connect the USB drive on the front panel.
 4. The updater file is automatically detected.
- Otherwise, go to Control > USB Host > Scan for Updater.
4. Extract the updater file.
 5. Install the new firmware.

ZENITH 100 – REF. ZEN100 / FRONT & REAR PANELS DESCRIPTION



CAUTION:

The user should avoid disconnecting the power source (AC input) until the unit is in stand-by mode.



OPERATION OVERVIEW

WEB RCS MENUS

LIVE

Screens / Aux.: Set Screens and Aux Screens layer settings (content, size, position, borders, transitions, etc.).

Multiviewer: Set Multiviewer widgets settings (content, size, and position).

SETUP

Preconfig.: Setup assistant for adjusting all basic setups.

Multiviewer: Set Multiviewer signal settings (Custom resolution , rate and HDR conversion), patterns or image adjustment. Outputs: Set Outputs signal settings (HDCP, custom resolution and rate), patterns or image adjustment.

Inputs: Set Inputs signal settings (resolution, rate and HDR conversion), patterns, image adjustment, cropping and keying.

Images & Library: Import images in the unit. Then load them as image presets to be used in layers.

Formats: Create and manage up to 16 custom formats.

EDID: Create and manage EDIDs.

Custom LUT: Import and manage LUTs.

Audio: Manage Dante Audio and audio routing.

Extras: Timers and GPIO.

Streaming: Broadcast a video signal over IP to an online web service or to a private network.

PRECONFIG

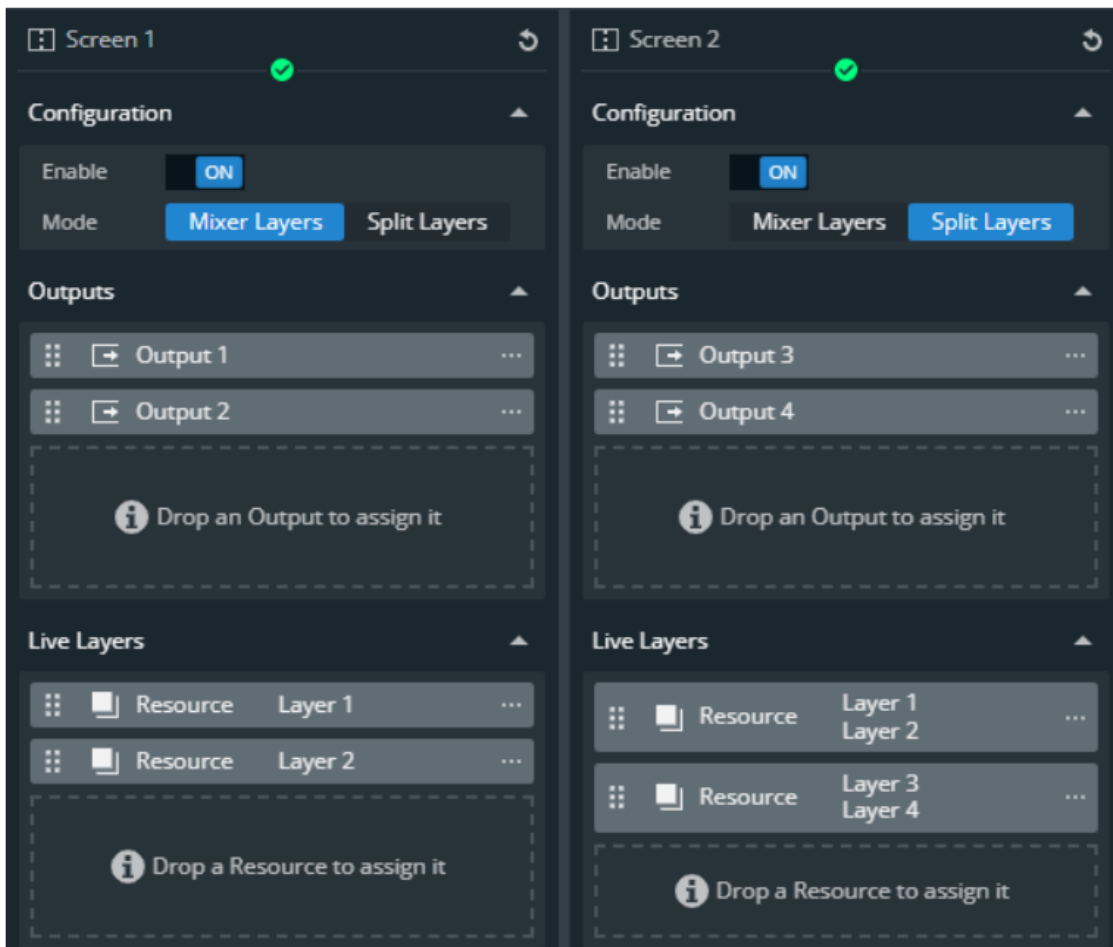
System

Set the Internal rate, Framelock, HDR, Audio rate, etc.

Screens / Aux Screens

Enable Screens and Aux Screens.

Select the layer mode per screen (see below). Assign outputs and layers to Screens using drag and drop.



Mixer Seamless and Split layers mode

In Split layers mode, double the number of layers displayed on Program. (Transitions are limited to Fade or Cut. Multiviewer widgets display Preview in wireframe only).

Canvas

Position the outputs in a virtual screen to create the Canvas.

- Set Outputs resolution and position.
- Set Blending or Gap.
- Set Area of Interest (AOI).

Backgrounds

Select allowed Inputs and Images to create up to 8 Background sets per Screen to be used in Live.

Audio

De-embed audio channels from all inputs and re-embed them on all outputs.

Quick preset

Hide all contents and load a Master Memory, Fade-to-Black or one custom image on all Screens

LIVE

Create presets in LIVE > Screens and LIVE > Multiviewer.

- Set layer size and position in Preview or Program by clicking and dragging the layer.
- Drag sources into layers from the left panel or select them in layer properties.
- Set transitions and use the Take button to send the Preview configuration to Program

For more layers settings, please refer to the Alta 4K User Manual.

A Multiviewer can display up to 27 resizeable Widgets that act like Screen layers. A Widget content can be an output, preview, input, image or timer.

MEMORIES

Once a preset is built, save it as one of the 200 Screen memory slots (or 50 Master memory slots) the Zenith 100 offers.

- Click Save, filter what to save and select a Memory.

The screenshot shows a software interface for saving a preset. It has a dark theme. At the top, there's a 'Mode' section with two radio buttons: 'Save from PGM' (which is selected) and 'Save from PRW'. Below that is a 'Select' section with a dropdown menu labeled 'Screen' and 'S1'. The next section is 'Filter', which has two columns of checkboxes. The first column is labeled 'Category' and includes 'ALL', 'Source', 'Opacity', 'Transitions', and 'Timing'. The second column is labeled 'Layer' and includes 'ALL', 'BKG', 'L1', 'L2', 'L3', and 'L4'. Below the filter section is a section titled 'Save to M15 - (empty)'. It contains a 'Memory' field with the value '15' and a text input field labeled 'Enter Label..'. Below that is a 'Color' section with a grid of 16 color swatches. At the very bottom is a large orange button labeled 'Save'.

- Load a preset at any time on Program or Preview by clicking on the preset number or using drag and drop the

preset into the Program or Preview windows.

MORE FEATURES

Save / Load a configuration

Export and Import configurations from the Web RCS or Front panel.
Save configurations directly in the unit.

Image Capture

Create an image file from any input or output video signal.

Keying

Apply Chroma or Luma Keying on an Input.

Master Memories

Use Master Memory to load multiple Screen presets

Remote Control

Fully compatible with Analog Way RC400T, Shot Box² and Control Box³, use them to recall Memories and trigger transitions.

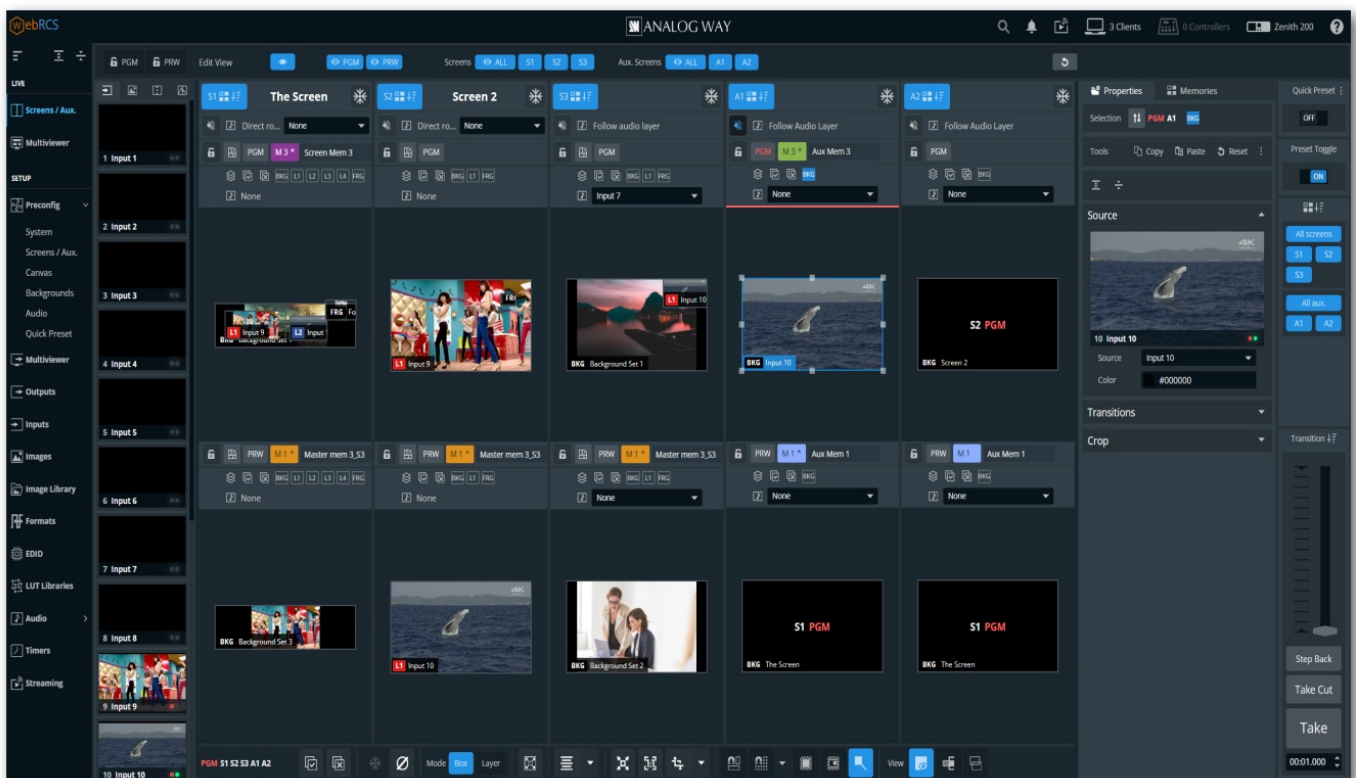
For complete details and operations procedures, please refer to the Alta 4K User Manual and our website:

www.analogway.com

WEB RCS – INSPIRED BY LIVEPREMIER

Familiar to LivePremier and Midra™ 4K users, the Web RCS for Alta 4K is the easiest way to setup your configuration and manage your live presentation.

The Web RCS for Alta 4K is embedded in the device and requires no software installation.



START IP STREAMING

The duplicate of one input or output video signal can be broadcast over IP to an online web service or to a private network.

1. Go to Streaming.
2. In Configuration, select Client or Server mode. In Client mode, select an RTMP destination.
3. In Video > Source, select the Input, Output or Multiviewer source to stream.
4. In Video > Profile, select the output format (720p25, 720p30, 720p50, 720p60 or 1080p20 and 1080p30).
5. In Video > Quality, select Low, Medium or High. Or select Custom Bitrate and enter a value in kbps.
6. In Audio > Mode, select to Follow content or select Direct routing and set the audio source.
7. On the top of the page, click Start.

In Server mode, the default URL to get the stream content is: `rtmp://192.168.2.140:1935/stream/live`

WARRANTY AND SERVICE


This Analog Way product has a 3 year warranty on parts and labor (back to factory). Broken connectors are not covered by warranty. This warranty does not include faults resulting from user negligence, special modifications, electrical surges, abuse (drop/crush), and/or other unusual damage. In the unlikely event of a malfunction, please contact your local Analog Way office for service.

GOING FURTHER WITH THE ZENITH 100

For complete details and operations procedures, please refer to the Alta 4K unit User Manual and our website for further information: www.analogway.com



Documents / Resources

	<p>ANALOG WAY Zenith 100 Multi Screen and Multi Layer [pdf] User Guide Zenith 100 Multi Screen and Multi Layer, Zenith 100, Multi Screen and Multi Layer, Screen and Multi Layer, Multi Layer</p>
---	---

References

- [Product registration | Analog Way](#)