


# ANALOG DEVICES DC3248A Low VIN High Efficiency 10A Step Down DC to DC Module Regulator User Guide

[Home](#) » [Analog Devices](#) » ANALOG DEVICES DC3248A Low VIN High Efficiency 10A Step Down DC to DC Module Regulator User Guide 

## Contents

- 1 [ANALOG DEVICES DC3248A Low VIN High Efficiency 10A Step Down DC to DC Module Regulator](#)
- 2 [General Description](#)
- 3 [Ordering Information appears at end of demo manual.](#)
- 4 [Features and Benefits](#)
- 5 [DC3248A Evaluation Board Files](#)
- 6 [Quick Start Required Equipment](#)
- 7 [Procedure](#)
- 8 [Typical Performance Characteristics](#)
- 9 [DC3248A Bill of Materials](#)
- 10 [DC3248A Schematic](#)
- 11 [Ordering Information](#)
- 12 [Documents / Resources](#)
  - 12.1 [References](#)
- 13 [Related Posts](#)

## ANALOG DEVICES DC3248A Low VIN High Efficiency 10A Step Down DC to DC Module Regulator

### USER GUIDE

## General Description

The DC3248A evaluation board circuit features the LTM®4659, a high efficiency, 10A step-down power μModule® regulator. The input voltage range is from 2.25V to 5.5V. The output voltage range is 0.5V to VIN. Derating may be necessary for certain VIN, VOUT, frequency and thermal conditions. The DC3248A evaluation board offers the SSTT pin, allowing the user to program output tracking, soft start period and die temperature monitoring. The MODE/SYNC pin either synchronizes the switching frequency to an external clock, is a clock output, or sets the PWM mode. It can be externally synchronized to a clock from 1MHz to 2.6MHz. The Pulse width modulation (PWM) modes of operation are Forced continuous mode (FCM) for low noise or pulse-skipping mode (PSM) for high efficiency at light load. The LTM4659 defaults to FCM during synchronization and operates in PSM when both the FREQ and MODE/SYNC pins are connected to VIN.

**Ordering Information appears at end of demo manual.**

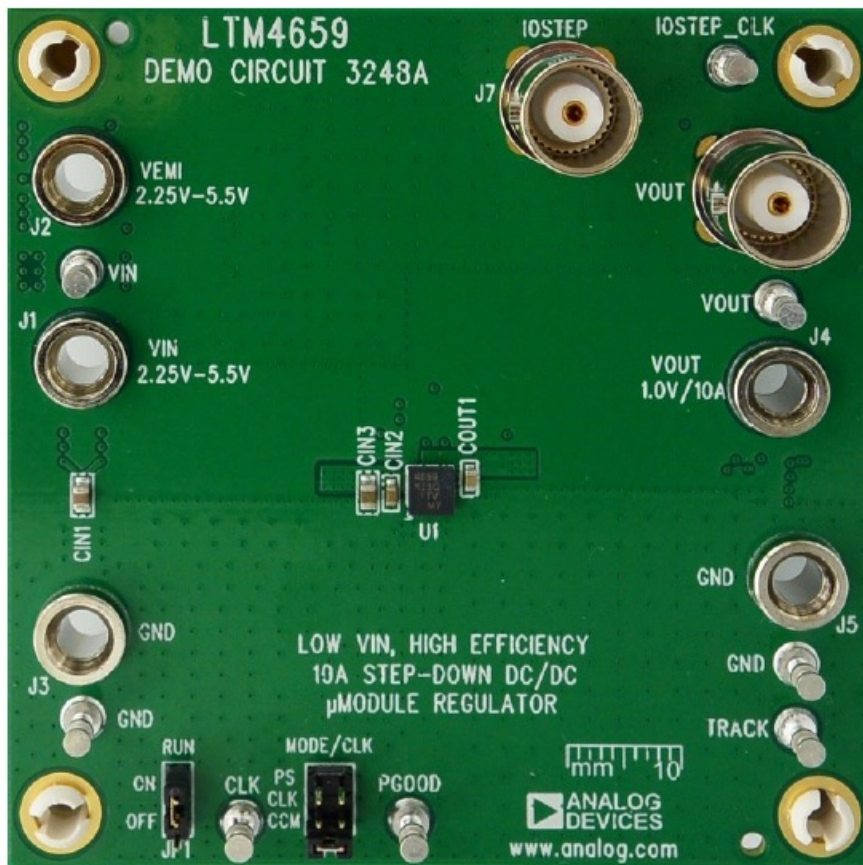
The LTM4659 uses external compensation. Users can tune the compensation circuit to ensure the loop is stable and that the desired transient performance can be achieved. For output loads that demand more than 10A of current, multiple LTM4659s can be paralleled to run out-of-phase to provide more output current without increasing input and output voltage ripples. The LTM4659 data sheet must be read in conjunction with this evaluation board manual prior to working on or modifying the DC3248A evaluation board.

**Features and Benefits**

- Tiny surface mount, 4mm × 4mm × 1.43mm LGA
- Silent Switcher®2 architecture
- Ultralow Electromagnetic Interference (EMI) noise

**DC3248A Evaluation Board Files**

FILE	DESCRIPTION
<a href="#">DC3248A</a>	Evaluation board circuit design files.



**Figure 1.** DC3248A Evaluation Board Circuit (Part Marking Is Either Ink Mark or Laser Mark)

**Table 1. Performance Summary**

Specifications are at TA = 25°C

PARAMETER	CONDITIONS/NOTES	MIN	TYP	MAX	UNITS
Input voltage range		2.25		5.5	V
Output voltage		0.985	1.0	1.015	V
Maximum continuous output current	Derating is necessary for certain operating conditions. Refer to the data sheet for details.	10			ADC
Operating frequency		2			MHz
Efficiency	$V_{IN} = 3.3V$ , $V_{OUT} = 1.0V$ , $I_{OUT} = 10A$	<a href="#">82.16</a> (see Figure 3)			%
Load transient	$V_{IN} = 3.3V$ , $V_{OUT} = 1.0V$ , $I_{STEP} = 0A$ to $2.5A$	<a href="#">70</a> (see Figure 5)			mV

### Quick Start Required Equipment

- One 0V to 30V DC, 20A power supply
- Electronic load with 20A sink capacity
- Four digital multimeters (DMM)

## Procedure

The DC3248A evaluation board is an easy way to evaluate the performance of the LTM4659. See Figure 2 for proper measurement equipment setup and follow the procedure below.

1. Place jumpers in the following positions for a typical application.

JP1	RUN	ON
JP2	MODE/CLK	CCM

2. With the power off, connect the input power supply, load and meters as shown in Figure 2. Preset the load to 0A and VIN supply to 3.3V.

3. Turn on the power supply at the input. The output voltage should be  $1.0V \pm 1.5\%$  (0.985V to 1.015V).

4. Vary the input voltage from 2.25V to 5.5V and adjust the load current from 0A to 10A. Observe the output voltage regulation, ripple voltage, efficiency, and other parameters.

5. (Optional) To set LTM4659 to PSM, set the MODE/CLK jumper JP8 to PS. See Table 2 for more details.

**Table 2. LTM4659 Single-Phase Configuration**

FREQ PIN CONNECTION	MODE/SYNC PIN CONNECTION	MODE OF OPERATION	SWITCHING FREQUENCY
VIN	Clock input	FCM	External clock
VIN	AGND	FCM	2MHz default
VIN	VIN	PSM	2MHz default
Resistor to AGND	Clock output	FCM	R <sub>FREQ</sub> -programmed

6. (Optional) For the optional load transient test, apply an adjustable pulse signal between IOSTEP\_CLK and GND test points. The pulse amplitude sets the load step current amplitude. Keep the pulse width short (<1ms) and pulse duty cycle low (<5%) to limit the thermal stress on the load transient circuit.

7. (Optional) LTM4659 can be synchronized to an external clock signal. Place the JP8 jumper on CLK and apply a clock signal on the CLK test point.

8. (Optional) The output of LTM4659 can track another voltage. This external voltage can be connected to the test point TRACK on this board.

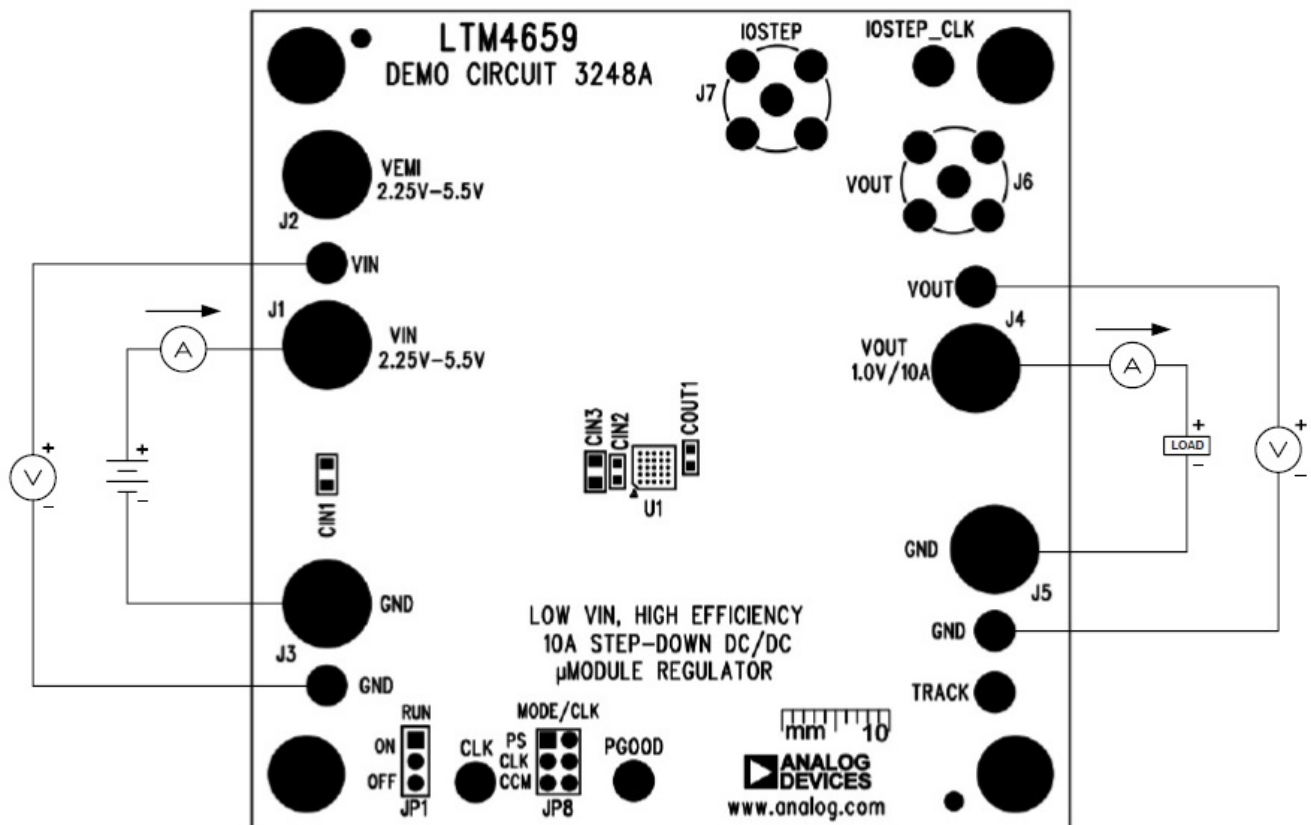


Figure 2. Measurement Setup of DC3248A

## Typical Performance Characteristics

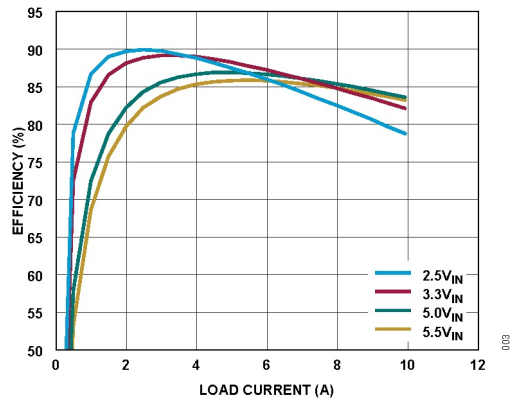


Figure 3. Measured Efficiency at  $f_{SW} = 2\text{MHz}$

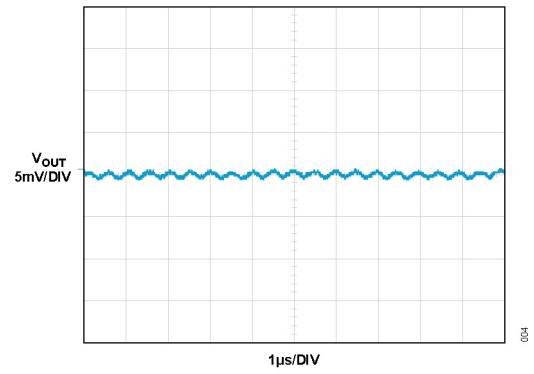


Figure 4. Output Voltage Ripple at  $V_{IN} = 3.3\text{V}$ ,  $V_{OUT} = 1.0\text{V}$ ,  $I_{OUT} = 0\text{A}$

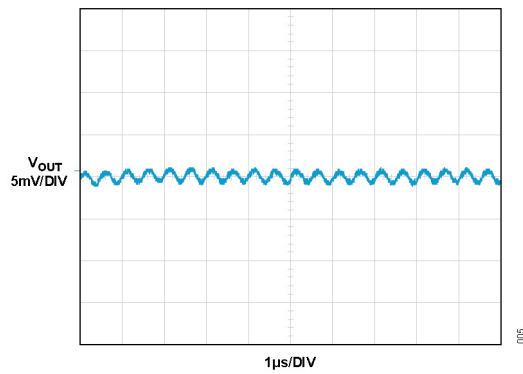


Figure 5. Output Voltage Ripple at  $V_{IN} = 3.3\text{V}$ ,  $V_{OUT} = 1.0\text{V}$ ,  $I_{OUT} = 10\text{A}$

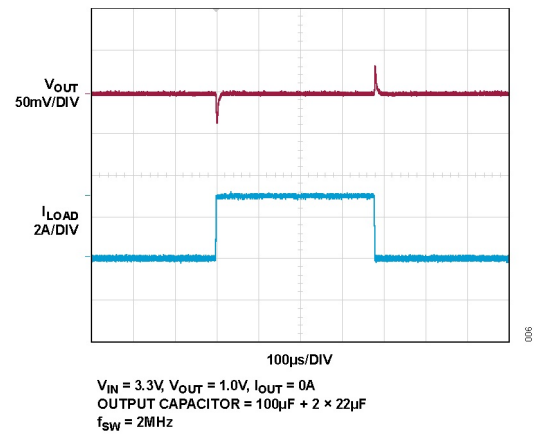


Figure 6. Load Transient at  $V_{IN} = 3.3\text{V}$ ,  $V_{OUT} = 1.0\text{V}$ ,  $I_{OUT\_STEP} = 0\text{A to } 2.5\text{A}$

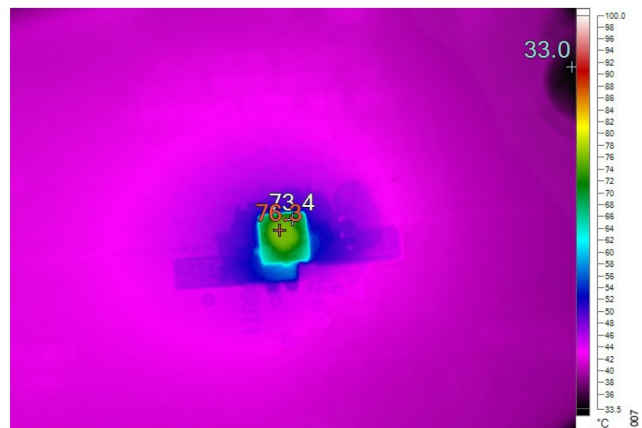


Figure 7. Thermal Image of LTM4659 at  $V_{IN} = 3.3\text{V}$ ,  $V_{OUT} = 1.0\text{V}$ ,  $I_{OUT} = 10\text{A}$  ( $T_A = 25^\circ\text{C}$ , No Forced Airflow)

## DC3248A Bill of Materials

ITEM	QTY	REFERENCE	PART DESCRIPTION	MANUFACTURER/PART NUMBER
------	-----	-----------	------------------	--------------------------

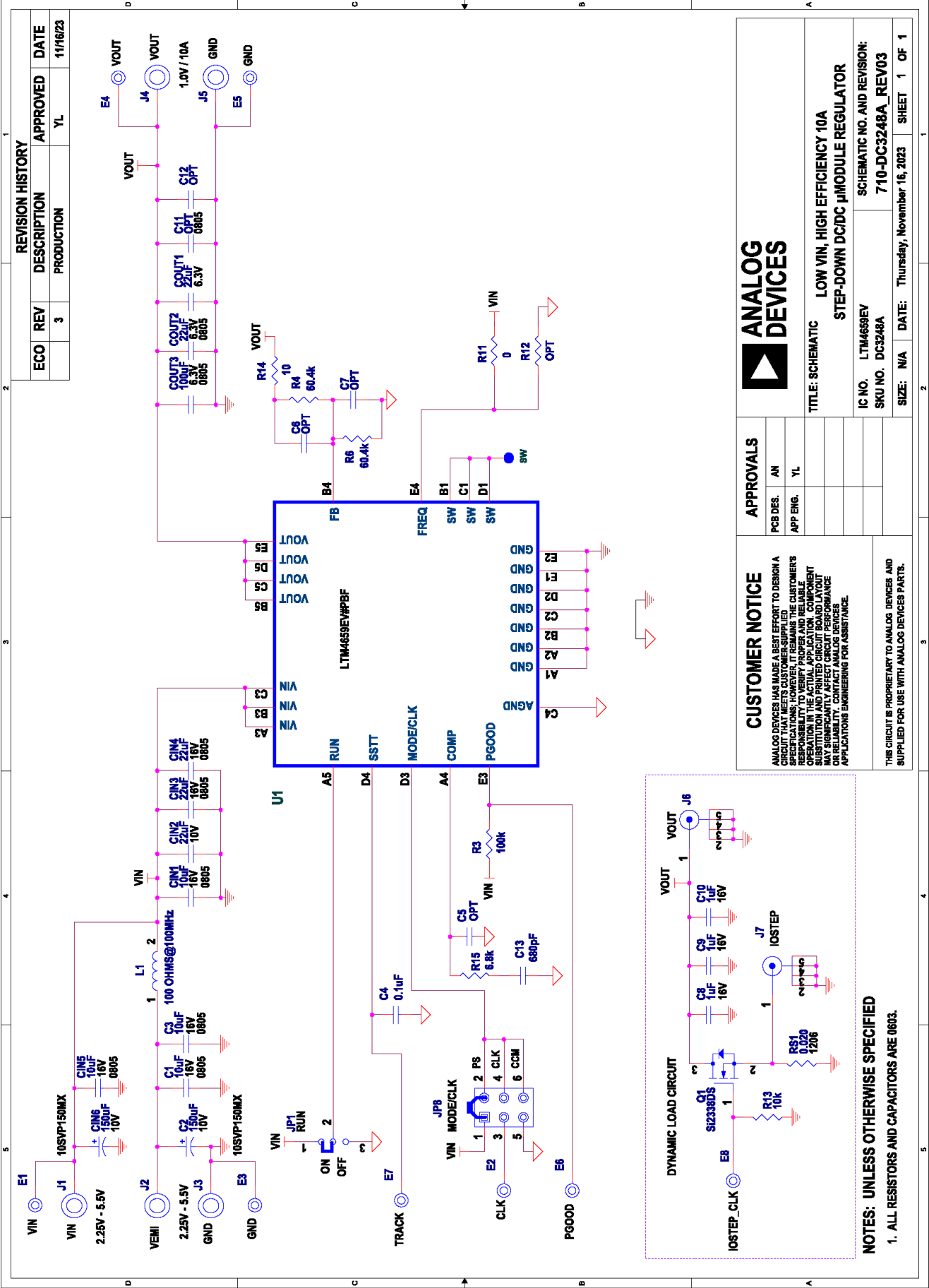
Required Circuit Components				
1	4	C1, C3, C <sub>IN1</sub> , C <sub>I</sub> N5	CAP., 10μF, X7R, 16V, 10%, 0805	TAIYO YUDEN, EMK212BB7106 MG-T
2	2	C2, C <sub>IN6</sub>	CAP., 150μF, ALUM ELECT, 10V, 20%, 8mm × 6.9mm	PANASONIC, 10SVP150MX
3	1	C4	CAP., 0.1μF, X7R, 6.3V, 10%, 0603	AVX, 06036C104KAT2A
4	1	C13	CAP., 680pF, C0G, 25V, 5%, 0603	AVX, 06033A681JAT2A
5	1	C <sub>IN2</sub>	CAP., 22μF, X5R, 10V, 20%, 0603	AVX, 0603ZD226MAT2A
6	2	C <sub>IN3</sub> , C <sub>IN4</sub>	CAP., 22μF, X5R, 16V, 10%, 0805	TDK, C2012X5R1C226M125AC
7	1	C <sub>OUT1</sub>	CAP., 22μF, X5R, 6.3V, 20%, 0603	MURATA, GRM188R60J226MEA0D
8	1	C <sub>OUT2</sub>	CAP., 22μF, X5R, 6.3V, 20%, 0805	MURATA, C0805C226M9PACTU
9	1	C <sub>OUT3</sub>	CAP., 100μF, X5R, 6.3V, 20%, 0805	MURATA, GRM21BR60J107ME15K
10	1	R3	RES., 100kΩ, 1%, 1/10W, 0603	STACKPOLE ELECTRONICS, IN C., RMCF0603FG100K
11	2	R4, R6	RES., 60.4kΩ, 1%, 1/10W, 0603, AEC- Q200	VISHAY, CRCW060360K4FKEA
12	1	R15	RES., 6.8 kΩ, 5%, 1/16W, 0603	KOA SPEER, RK73B1JT682J
13	1	U1	IC, 5.5V <sub>IN</sub> , 10A μModule, 4mm × 4mm PCK G, BGA	ADI, LTM4659EV#PBF
Additional Evaluation Board Circuit Components				
1	0	C5–C7, C12	CAP., OPTION, 0603	
2	0	C11	CAP., OPTION, 0805	
3	1	R11	RES., 0Ω, 1/10W, 0603	BOURNS, CR0603-J/-000ELF
4	0	R12	RES., OPTION, 0603	
5	3	C8–C10	CAP., 1μF, X7R, 16V, 10%, 0603	KEMET, C0603C105K4RAC7867
6	1	L1	IND., 100 AT 100MHz, FERRITE BEAD, 25 %, 8A, 6m, 1812	WURTH ELEKTRONIK, 7427922 6101
7	1	Q1	XSTR., MOSFET, N-CHAN, 30V, 5.5A, 3-PI N SOT-23	VISHAY, Si2338DS-T1-GE3
8	1	R13	RES., 10kΩ, 1%, 1/10W, 0603, AEC-Q200	VISHAY, CRCW060310K0FKEA
9	1	R14	RES., 10Ω, 1%, 1/10W, 0603	VISHAY, CRCW060310R0FKEA
10	1	RS1	RES., 0.020Ω, 1%, 1W, 1206, PWR, META L, SENSE, AEC-Q200	VISHAY, WSLP1206R0200FEA
Hardware: For Evaluation Board Circuit Only				

1	8	E1-E8	TEST POINT, TURRET, 0.094" MTG. HOLE , PCB 0.062" THK	MILL-MAX, 2501-2-00-80-00-00-0 7-0
2	5	J1-J5	CONN., BANANA JACK, FEMALE, THT, N ON- INSULATED, SWAGE, 0.218"	KEYSTONE, 575-4
3	2	J6, J7	CONN., RF, BNC, RCPT, JACK, 5-PIN, ST, THT, 50	AMPHENOL RF, 112404
4	1	JP1	CONN., HDR, MALE, 1 × 3, 2mm, VERT, S T, THT, NO SUBS. ALLOWED	WURTH ELEKTRONIK, 6200031 1121
5	1	JP8	CONN., HDR., MALE, 2 × 3, 2mm, VERT, S T, THT	WURTH ELEKTRONIK, 6200062 1121
6	4	MP1-MP4	STANDOFF, NYLON, SNAP-ON, 0.50"	KEYSTONE, 8833
7	2	XJP1, XJP8	CONN., SHUNT, FEMALE, 2-POS, 2mm	WURTH ELEKTRONIK, 6080021 3421

## DC3248A Schematic



Ordering Information




REVISION NUMBER	REVISION DATE	DESCRIPTION	PAGES CHANGED
0	04/24	Initial release	—

ASSUMED BY ANALOG DEVICES FOR ITS USE, NOR FOR ANY INFRINGEMENTS OF PATENTS OR OTHER RIGHTS OF THIRD PARTIES THAT MAY RESULT FROM ITS USE. SPECIFICATIONS ARE SUBJECT TO CHANGE WITHOUT NOTICE. NO LICENCE, EITHER EXPRESSED OR IMPLIED, IS GRANTED UNDER ANY ADI PATENT RIGHT, COPYRIGHT, MASK WORK RIGHT, OR ANY OTHER ADI INTELLECTUAL PROPERTY RIGHT RELATING TO ANY COMBINATION, MACHINE, OR PROCESS WHICH ADI PRODUCTS ALL INFORMATION CONTAINED HEREIN IS PROVIDED “AS IS” WITHOUT REPRESENTATION OR WARRANTY. NO RESPONSIBILITY IS OR SERVICES ARE USED. TRADEMARKS AND REGISTERED TRADEMARKS ARE THE PROPERTY OF THEIR RESPECTIVE OWNERS.

---

## Documents / Resources

	<p><b><a href="#">ANALOG DEVICES DC3248A Low VIN High Efficiency 10A Step Down DC to DC Module Regulator</a> [pdf] User Guide</b></p> <p>DC3248A Low VIN High Efficiency 10A Step Down DC to DC Module Regulator, DC3248A, Low VIN High Efficiency 10A Step Down DC to DC Module Regulator, High Efficiency 10A Step Down DC to DC Module Regulator, 10A Step Down DC to DC Module Regulator, Step Down DC to DC Module Regulator, DC to DC Module Regulator, Module Regulator, Regulator</p>
---	---

## References

- [User Manual](#)

[Manuals+](#), [Privacy Policy](#)

This website is an independent publication and is neither affiliated with nor endorsed by any of the trademark owners. The "Bluetooth®" word mark and logos are registered trademarks owned by Bluetooth SIG, Inc. The "Wi-Fi®" word mark and logos are registered trademarks owned by the Wi-Fi Alliance. Any use of these marks on this website does not imply any affiliation with or endorsement.