



ANALOG DEVICES AD9083 ADC Evaluation Board User Guide

[Home](#) » [Analog Devices](#) » ANALOG DEVICES AD9083 ADC Evaluation Board User Guide 

Contents

- [1 ANALOG DEVICES AD9083 ADC Evaluation Board](#)
- [2 Typical Setup](#)
- [3 Equipment Needed](#)
- [4 Hardware Needed](#)
- [5 Software Needed](#)
- [6 Helpful Documents](#)
- [7 Board Design and Integration Files](#)
- [8 Set Up MicroZed™ Connection](#)
- [9 MicroSD Card for the MicroZed™ Board](#)
- [10 Evaluation Software Configuration](#)
- [11 Introduction to the AD9083 Plugin](#)
- [12 Troubleshooting Notes](#)
- [13 Documents / Resources](#)
 - [13.1 References](#)
- [14 Related Posts](#)



ANALOG DEVICES AD9083 ADC Evaluation Board



This version (18 Jan 2021 14:52) was approved by Alex Arrants. The Previously approved version (18 Jan 2021 14:50) is available.

Quick Start Guide for Evaluating the AD9083 ADC Evaluation Board Using the ADS8-V3EBZ FPGA-Based Capture Board

Typical Setup

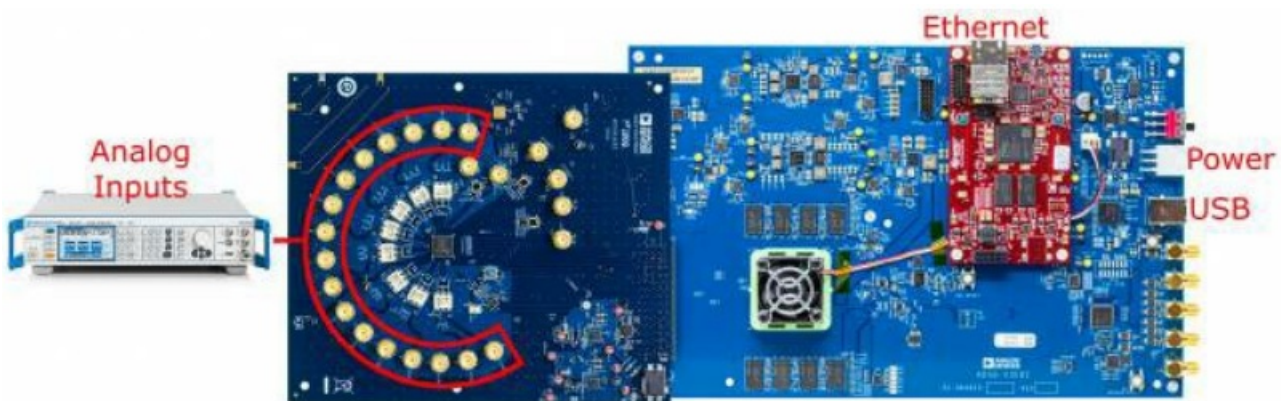


Figure 1. AD9083EBZ Evaluation Board and ADS8-V3EBZ Data Capture Board

Equipment Needed

- High Quality Analog Signal Source.
- Bandpass filter for the Analog Signal Source.
- The AD9083 PLL Reference Clock, FPGA Reference Clock and FPGA Global Clock are provided by the on-board AD9528 JESD204B Clock Generator.
- PC running Windows® with admin privileges and an available ethernet and USB port. Windows® 7 and Windows® 10 are currently supported by ACE.




Hardware Needed

- AD9083EBZ Evaluation Board
- ADS8-V3EBZ High Speed Carrier Card




Software Needed

- ACE

Helpful Documents

-  AD9083 Data Sheet
-  ACE Manual
-  Understanding High Speed ADC Testing and Evaluation – AN-835

Board Design and Integration Files

-  Schematics
-  Gerber Layout files
-  Bill of materials

Set Up MicroZed™ Connection

Before performing the evaluation of the AD9083, the Ethernet interface to the MicroZed™ board must be set up by configuring the network interface between the PC and the MicroZed™ board.

MicroSD Card for the MicroZed™ Board

To ensure proper connection between the microSD card and the MicroZed™ board, follow these steps:

1. Locate the microSD card labeled ADS8-HSx from the contents of ADS8-V3EBZ packaging.
2. Connect the microSD card to the MicroZed™ board (the contacts of the microSD card are face up).
3. As a precaution, ensure that the MicroZed™ board is seated properly on the ADS8-V3EBZ. Only a visual inspection is needed.

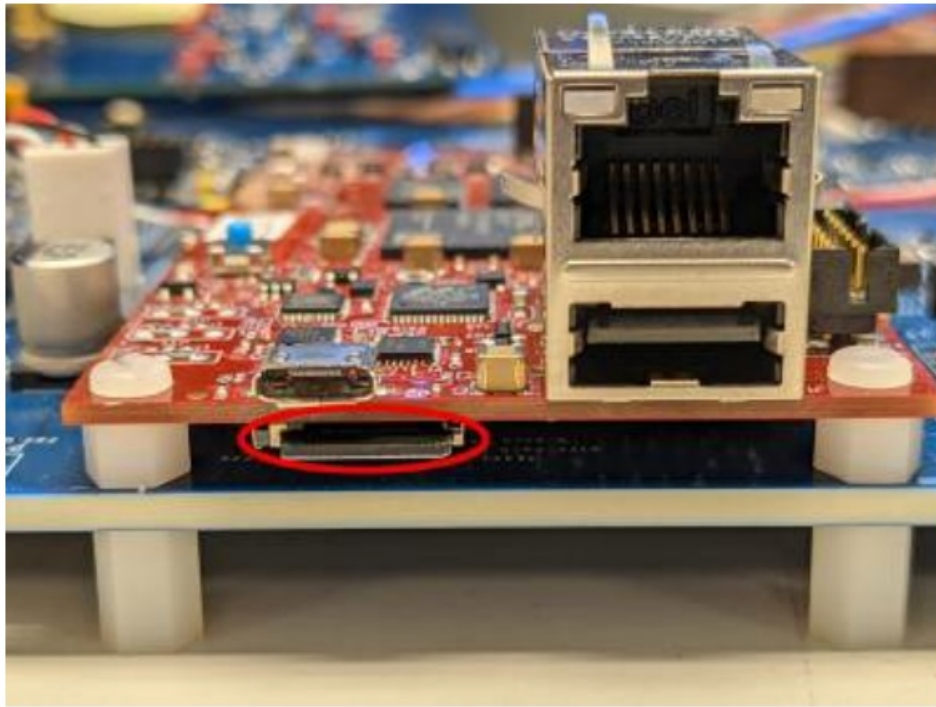



Figure 2. MicroSD Card Slot in MicroZed Board

Configure the Network Interface to the MicroZed™ Board

To configure the network interface to the MicroZed™ board, follow these steps:

1. Ensure that the connections to ADS8-V3EBZ are as shown in Figure 1. It is not necessary to connect the AD9083EBZ evaluation board.
2. One end of the Ethernet cable can be connected directly to the PC Ethernet port or to a USB to Ethernet adapter, with the other end connected to the MicroZed™ board.
3. Power on the ADS8-V3EBZ board. Allow up to 10 sec for the MicroZed™ board to boot up.
4. Open the local area connection settings. On Windows 7: Start Menu > Control Panel > Network and Sharing Center > Change adapter settings. On Windows 10: Start Menu > Settings > Network & Internet > Change adapter options.
5. If the Local Area Connection icon does not appear in the Network Connections window, unplug the Ethernet connection from the MicroZed™ board and then reconnect it.
6. Double click the Local Area Connection icon that appears.
7. Click Properties.
8. Select Internet Protocol Version 4 (TCP/IPv4).
9. Click Properties.
10. Enter 192.168.0.1 in the IP address field.
11. Ensure the Subnet mask field shows 255.255.255.0.
12. Click OK.

Evaluation Software Configuration

Download and run the ACE installer from the  ACE web page . After the ACE software is installed, the user must install the plugin for the AD9083 evaluation board. There are two options for installing the plugin, as described in the following sections.

Plugin Installation from ACE

Installing plugins can be performed using the Plug-in Marketplace feature in the ACE software as described in this section. Plugins can also be downloaded from the ACE software page by searching for the relevant device number within the ACE software.

To install a plugin from ACE, follow these steps:

1. From the Start menu, click All Programs > Analog Devices > ACE to open the main ACE software window.
2. In the left pane, click Plug-in Manager. The Manage Plug-ins window opens, as shown in Figure 2.
3. Click the Available Packages dropdown menu on the left side of the software window.
4. Enter the AD9083 in the search bar on the right side of the window to search for the device that is intended for evaluation and find the appropriate board plugin.
5. Select the AD9083 plugin and click Install Selected.
6. Click Close.

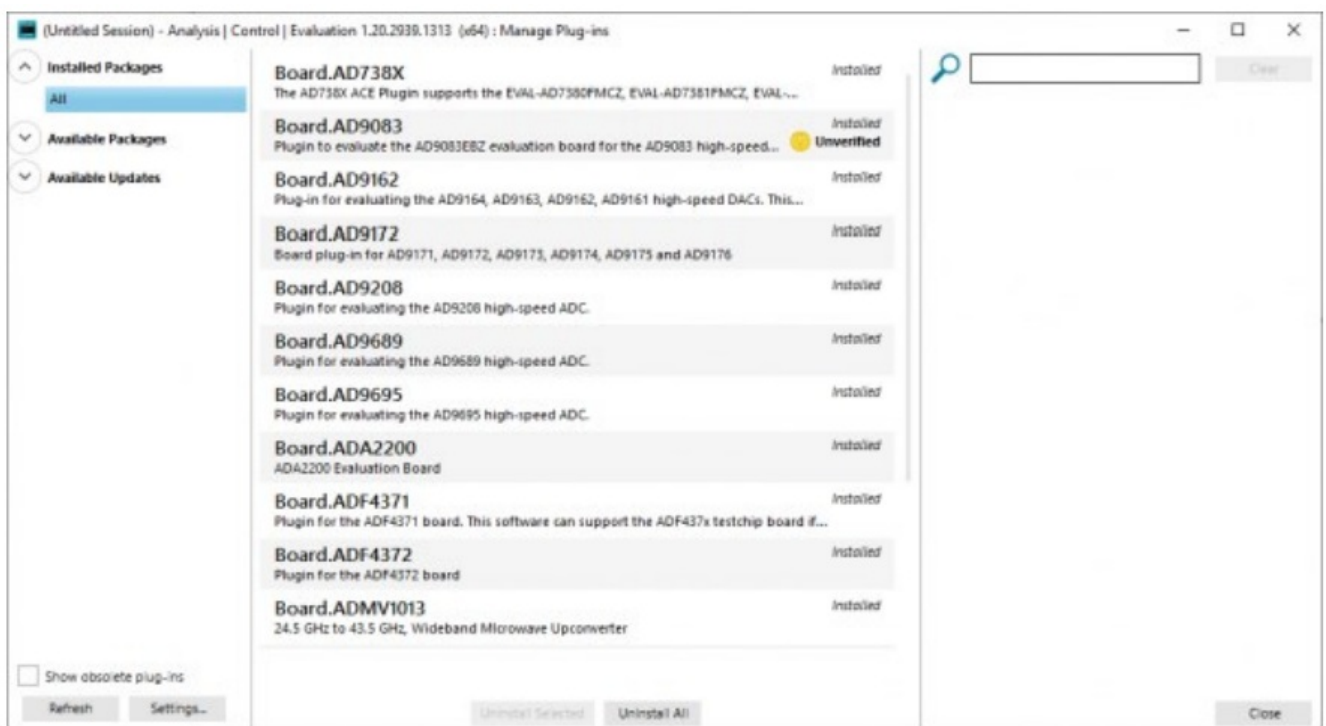



Figure 3. ACE Manage Plug-ins Window

Plugin Installation from the Web

To install the plugin from the web, follow these steps:

1. Ensure that the ACE software is installed.
2. From the ACE software page on the Analog Devices, Inc.  ACE web page, navigate to the ACE Evaluation Board Plug-ins section and search for the device to evaluate.
3. Click the AD9083 board plugin. The board plugin automatically downloads to the PC. When the download is complete, locate the downloaded file. Note that if the browser used for the plugin download is Internet Explorer, the file extension of the plugin file is .zip. If this occurs, right click the file and rename the file extension to .acezip.
4. Double click the .acezip file to automatically install the plugin.
5. The plugin installation process open the ACE software. Close ACE after plugin installation completes.

Introduction to the AD9083 Plugin

- The AD9083 plugin allows the user to evaluate the AD9083 chip via the AD9083EBZ evaluation board. The AD9083EBZ provides the power and clocking necessary to evaluate the AD9083 16-Channel ADC. The Power Delivery Network is powered by a LTM8074 1.2A Silent Switcher μ Module Regulator and clocking is provided by a AD9528 JESD204B Clock Generator. The reference for the AD9528 is a on-board 100 MHz VCXO.
- The AD9083EBZ Plugin will configure the AD9083 using the API. The Plugin generates the API commands, which are then downloaded to the MicroZed™, which in turn configures the AD9083.
- The Plugin will also configure the AD9528 using the clocking requirements from the Startup Wizard.
- To start using the AD9083EBZ, first ensure the board is connected as shown in Figure 1. Next, ensure that the ADS8-V3EBZ board is powered on before opening ACE.
- When the user opens the ACE software, the plugin appears in the Attached Hardware section of the ACE GUI (see Figure 3).

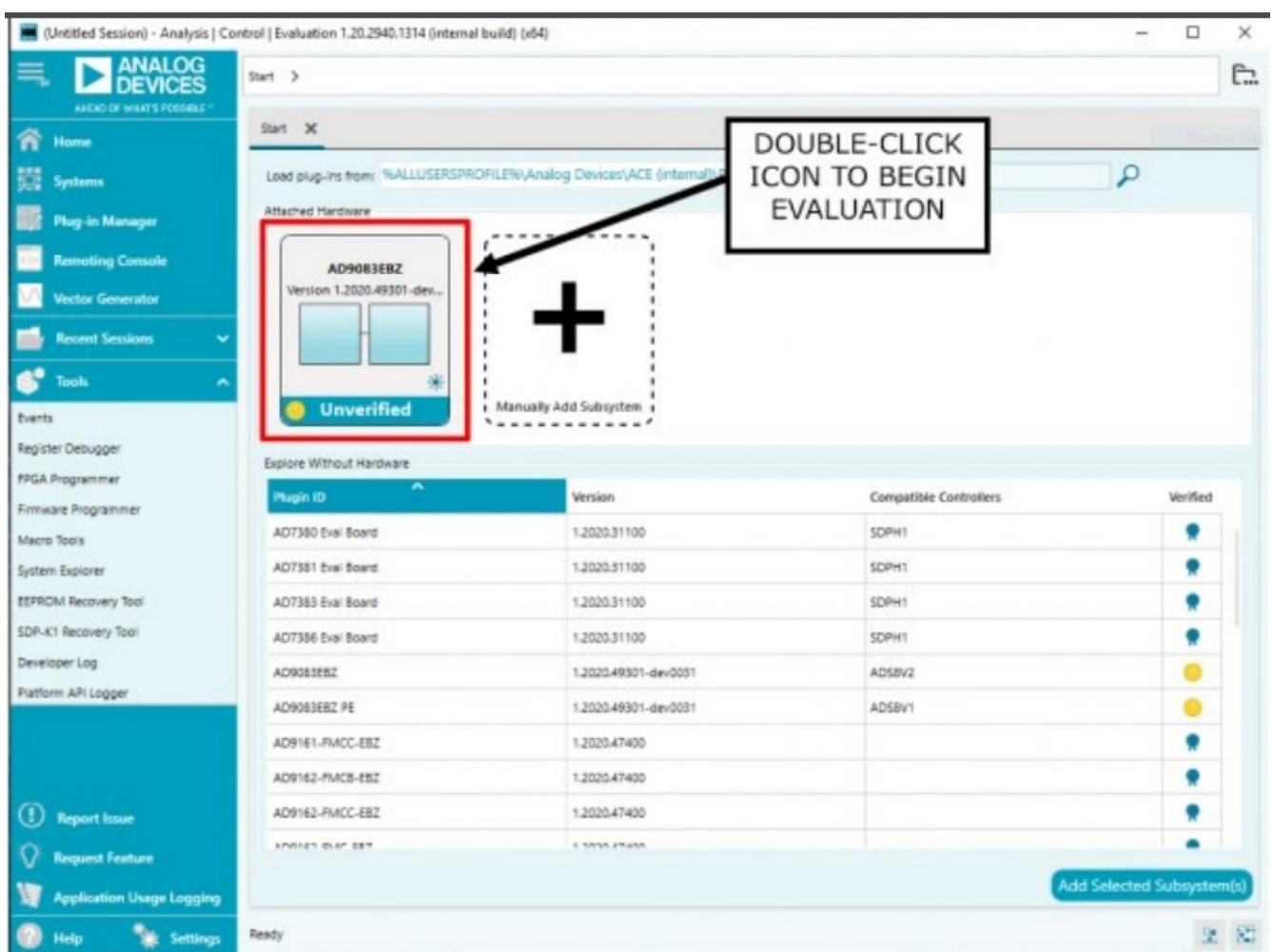


Figure 4. AD9083EBZ Evaluation Board and ADS8-V3EBZ Data Capture Board

Board View

- Double clicking the board icon in the Attached Hardware section in ACE opens the AD9083EBZ board view.
- The board view tab enables the user to quickly set up the AD9083. Figure 4 shows the STARTUP WIZARD pane within the AD9083EBZ board view. It may take several moments for the board view to initialize.

- Sample rate = 2 GSPS.
- On-chip PLL reference = 250 MHz.(Provided by the on-board AD9528)
- f_{INMAX} = 100 MHz (sample rate/20).
- f_C = 800 MHz.
- V_{MAX} = 2.0 V.
- R_{TERM} = 100 Ω .
- EN_HP = 0
- Backoff = 0
- CIC decimator = bypass.
- Use mixer? = No.
- Decimate by J = 8.
- Transport parameters L, M, F, S, N', K = 4, 16, 6, 1, 12, 32.
- 4 lanes at 15 Gbps each

1. Configure the AD9083 and AD9528 using the AD9083EBZSTARTUP WIZARD using the parameters listed above.
2. Click “Apply”. It will take several moments for the configuration to complete.
3. Navigate to Analysis
4. Click “Run Once”

You should see an FFT after setting up the board as shown and running the macro.

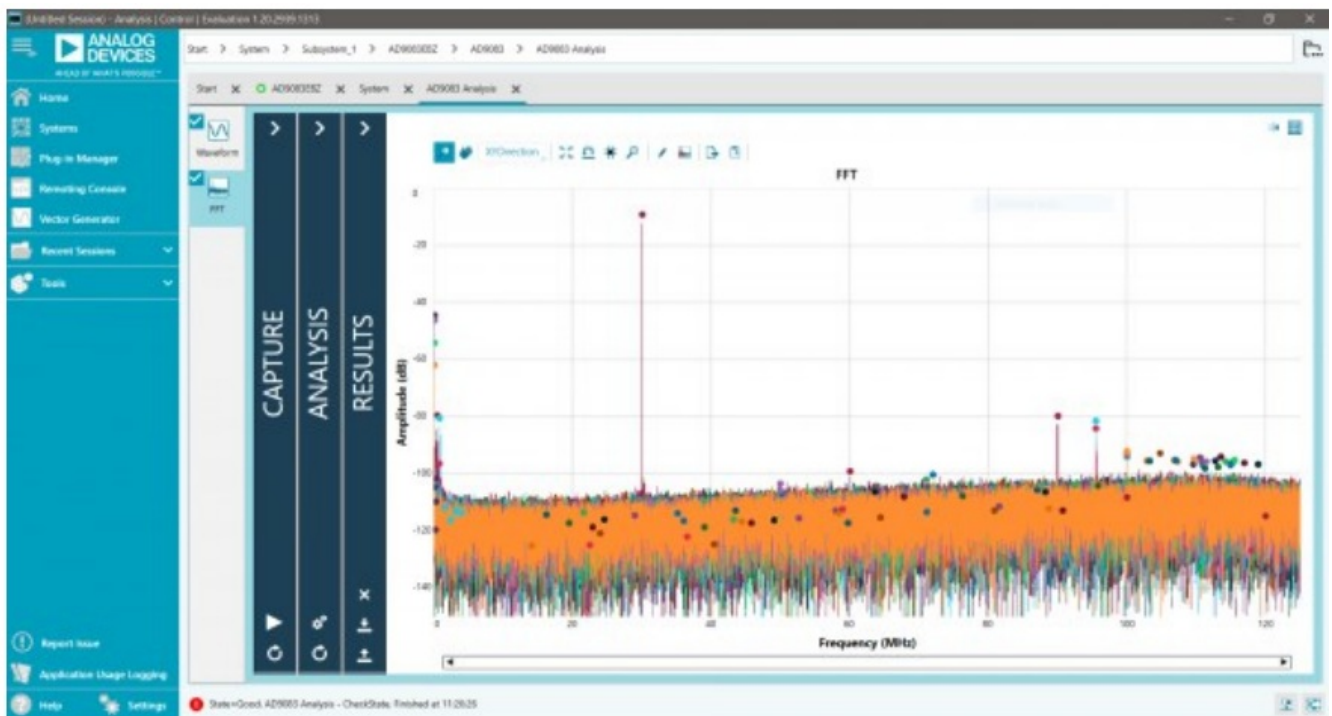


Figure 7. AD9083EBZ Typical FFT

Narrow Bandwidth Complex Output Mode

input frequency of 70.5MHz and the NCO frequency is 70.3125 MHz. Using the AD9083EBZ Startup Wizard, configure the AD9083 using the parameters below.

Parameters:

- Sample rate = 2 GSPS.
- On-chip PLL reference = 250 MHz.(Provided by the on-board AD9528)
- f_{INMAX} = 100 MHz (sample rate/20).
- f_C = 800 MHz.
- V_{MAX} = 2.0 V.
- R_{TERM} = 100 Ω .
- EN_{HP} = 0
- Backoff = 0
- NCO0/mixer (complex data), FTW = 70.3125 MHz.
- CIC decimator = 4.
- Decimate by J = 16.
- Transport parameters L, M, F, S, N', K = 2, 32, 32, 1, 16, 32.
- 2 lanes at 10 Gbps each.

1. Configure the AD9083 and AD9528 using the AD9083EBZSTARTUP WIZARD using the parameters listed above.
2. Click “Apply”. It will take several moments for the configuration to complete.
3. Navigate to Analysis
4. Click “Run Once”

You should see an FFT after setting up the board as shown and running the macro.

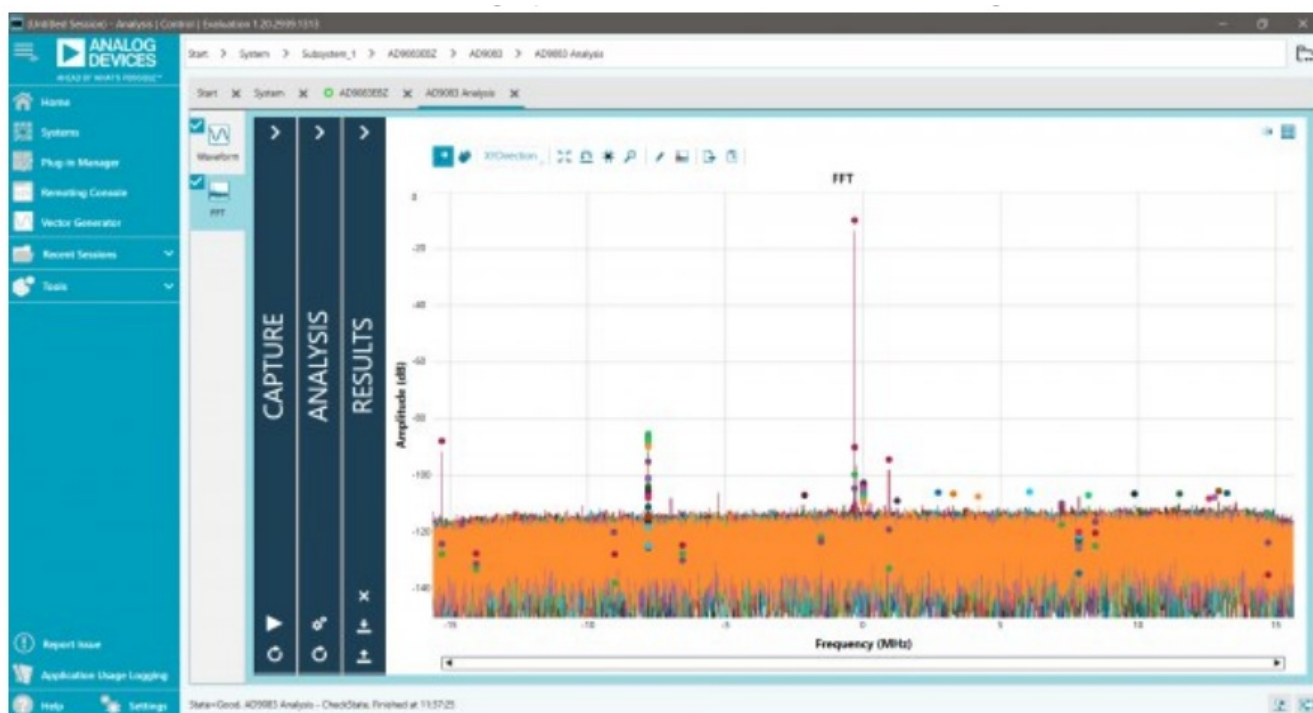


Figure 8. AD9083EBZ Typical FFT

Troubleshooting Notes

Evaluation Board is not Functioning Properly

It is possible that a board component has been rendered inoperable by ESD, removing a jumper during powered operation, accidental shorting while probing, etc. Try checking the supply domain voltages of the power adapter board while it is powered. They should be as follows:

- **Domain**

- 12V_IN
- V1P0V
- V1P8V

- **Test Point**

- TP19
- TP6
- TP14

- **Approx. Voltage**

- 12V
- 1V
- 1.8V

Evaluation Board is not Communicating with the ADS8-V3 / No SPI Communication

- Make sure the USB cable is making good connection on the ADS8-V3EBZ board and the PC. Try another USB port on the PC if needed. Some PCs work best with a SuperSpeed USB 3.0 port.
- The ADS8-V3EBZ should show up on the PC Device Manager
- Make sure that the FPGA on the ADS8-V3 has been programmed – a lit FPGA_DONE LED DS15 on the top of the ADS8-V3 and a powered fan are good indicators of the FPGA being programmed.
- Check the common mode voltage on the JESD204B traces. On the evaluation board, the common mode voltage should be roughly 0.5V. On the ADS8-V3, the common mode voltage should be around 0.8V.
- To test SPI operation, attempt to both read and write to register 0x000A (Scratch Pad Register) using ACE's Register Debugger. If the

register reads back the same value written to it, SPI is operational


- All registers reading back as either all ones or all zeros (i.e., 0xFF or 0x00) may indicate no SPI communication.
- Register 0x0000 (SPI Configuration A) reading back 0x81 in ACE may indicate no SPI communication as a result of the FPGA on the ADS8-V3 not being programmed.

Evaluation Board Fails to Capture Data

- Ensure that the board is functioning properly and that SPI communication is successful – see previous troubleshooting tips.
- Check the signal generator input on connector J20. Using SPI, read the On-Chip PLL lock Detect register 0xD44 to see if the on-chip PLL is locked. Try placing a differential oscilloscope probe on the clock pins to see if the clock signal is reaching the chip.
- Check the JESD204B PLL Locked indicator or register 0x301F (PLL Status). If the light in the plugin chip view is green / if the register reads back 0x80, the PLL is locked. If it is not locked:
 - Restart the evaluation board setup (power cycle FPGA, start a new session in ACE) by following the instructions from the start
 - Make sure P3 (Power Down / Standby Jumper) is not jumped.

Analog.com

Documents / Resources



Quick Start Guide for Evaluating the
AD9083 ADC Evaluation Board Using the
ADS8-V3EBZ FPGA-Based Capture Board
Board 1
Typical Setup

Equipment Needed

Hardware Needed

[ANALOG DEVICES AD9083 ADC Evaluation Board](#) [pdf] User Guide
ADS8-V3EBZ FPGA-Based Capture Board, AD9083 ADC Evaluation Board, AD9083, ADC Ev
aluation Board, Evaluation Board, Board

References

[Manuals+](#)