



# ams TMD2712 ALS and Proximity Sensor Module User Guide

[Home](#) » [ams](#) » ams TMD2712 ALS and Proximity Sensor Module User Guide 

*ams TMD2712 ALS and Proximity Sensor  
Module User Guide*



## Quick Start Guide

QG000164

# TMD2712

## TMD2712 EVM

## ALS and Proximity Sensor Module

v1-00 • 2020-Aug-12

---

### Contents

- [1 1 Out of the Box](#)
- [2 2 Software Installation](#)
- [3 3 Connect Hardware](#)
- [4 4 Start the Application](#)
- [5 5 Uninstall Application](#)
- [6 Documents / Resources](#)
- [7 Related Posts](#)

### 1 Out of the Box

For a detailed description of the TMD2712 ALS and Proximity Sensor Module Evaluation Kit, please refer to User Guide:

- UG000498

Each TMD2712 Evaluation Kit comes with the following components:

Figure 1: Evaluation Kit Contents

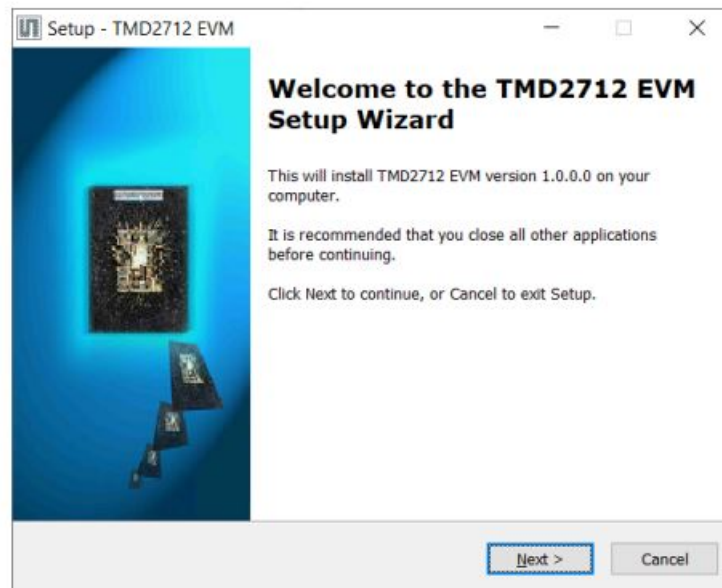


No.	Item	Description
1	TMD2712 Daughter Card	PCB with TMD2712 sensor installed
2	EVM Controller Board	Used to communicate USB to I2C
3	USB Cable (A to Mini-B)	Connects EVM controller to PC
4	Flash Drive	Includes application installer and documents

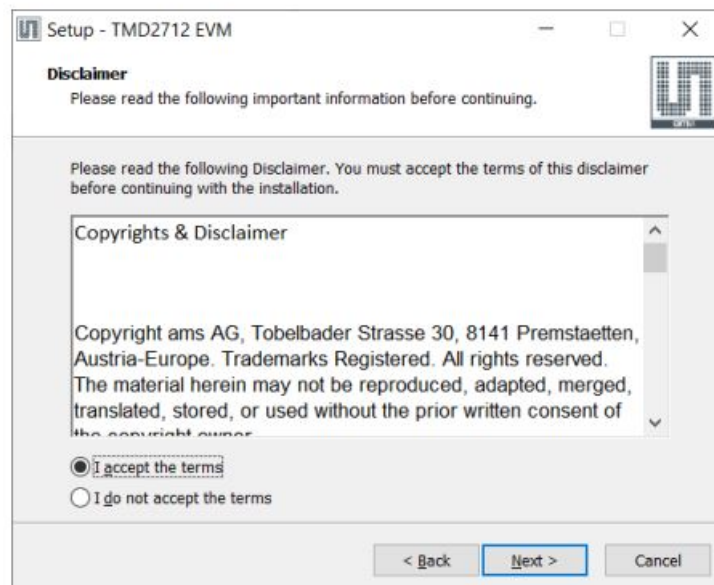
2 Software Installation

1. Plug the ams flash drive into an unused USB port
2. Double-click the Setup.exe file on the flash drive, or click Start > Run and type E:setup.exe and press Enter.  
**IMPORTANT:** Use the appropriate drive letter in the above command to install the software. Flash Drive will commonly be assigned the next available drive letter for example C: hard drive, D: CD-ROM, E: flash drive
3. The Setup Wizard will open and guide you through the installation of the TMD2712 host software, (Figure 2 through Figure 8)
4. At the end of the installation, click Finish to exit the setup.

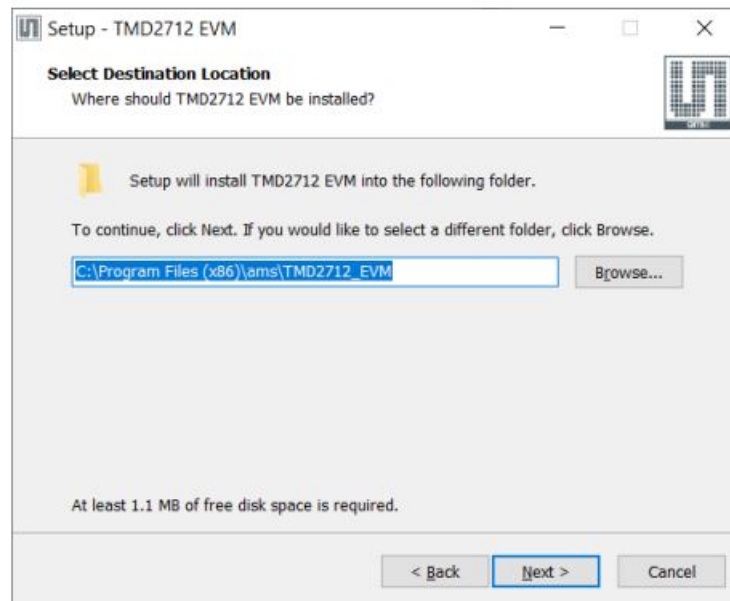
**Figure 2:**  
**Welcome Screen**



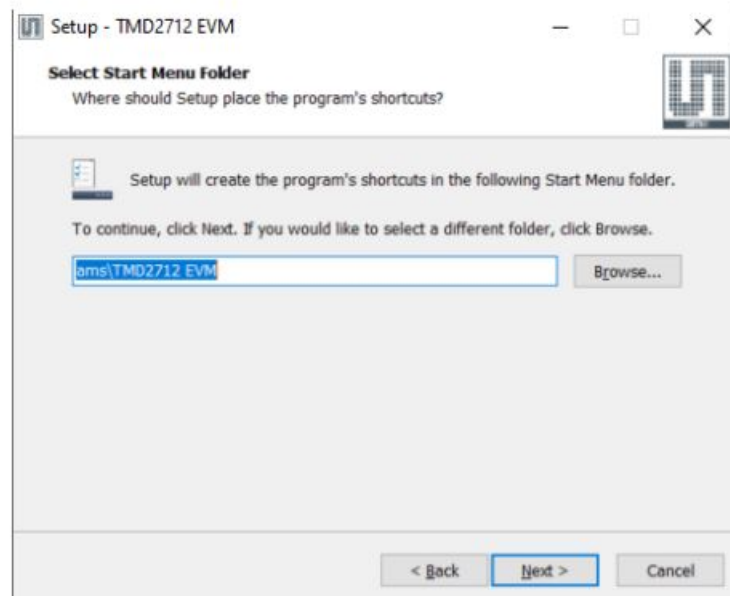
**Figure 3:**  
**Liability Disclaimer**



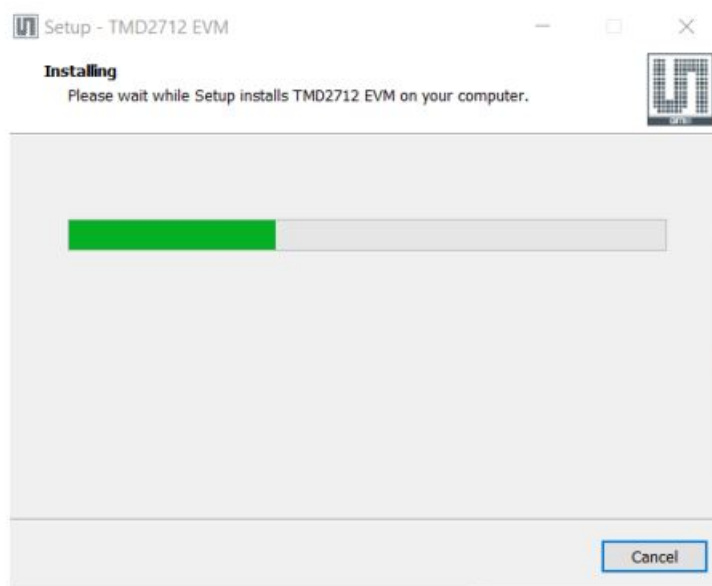
**Figure 4:**  
**Select Installation Folder**



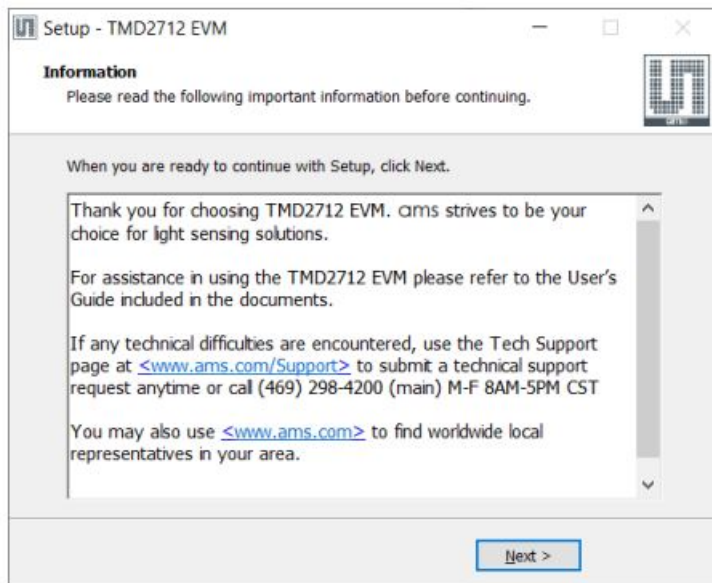
**Figure 5:**  
**Select Start Menu Folder**



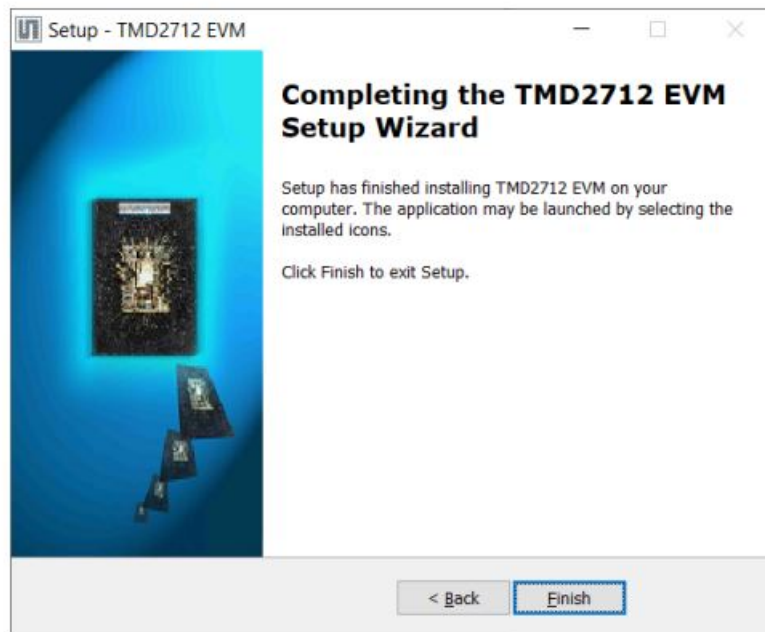
**Figure 6:**  
**Installation in Progress**



**Figure 7:**  
**Information Screen**



**Figure 8:**  
**Installation Completed Successfully**



### 3 Connect Hardware

Plug the TMD2712 Daughterboard into the Controller board (Figure 1). Always use ESD procedures when handling the EVM.

Using the enclosed USB cable, plug the mini-B connector into the EVM module. Using the other end of the cable, plug the USB A-connector into a USB port on the computer.

When the USB cable is connected, the green LED should flash momentarily on power up to indicate that power is being received via the USB interface, and the controller board processor is running. If the green LED does not flash, check the USB cable connections; unplug the USB cable and try again. If the green LED still does not flash, check the PC for USB error messages.

### 4 Start the Application

To start the application select `ams > TMD2712 EVM > TMD2712 EVM` on the All Programs menu. The default installation directory depending on the device and the operating system you are using is:

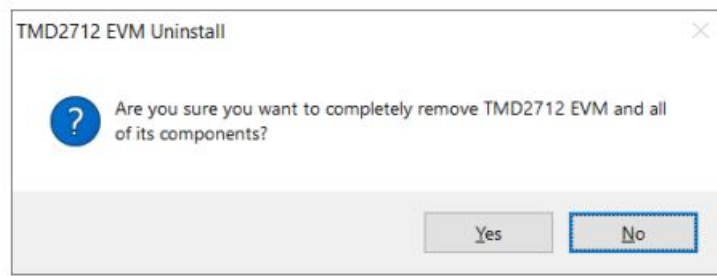
`C:\Program Files\ams\TMD2712_EVM` (Windows 32 bit operating systems)  
`C:\Program Files (x86)\ams\TMD2712_EVM` (Windows 64 bit operating systems)

A different install path may be selected by the user during the install (Figure 4). When started, the TMD2712 window will open on the PC and automatically connect to the hardware.

### 5 Uninstall Application

To remove the software from your computer (Figure 9), select `ams > TMD2712 EVM > Uninstall TMD2712 EVM` or use the Windows Control Panel.

**Figure 9:**  
**Remove Installation**



**Headquarters** ams AG Tobelbader Strasse 30 8141 Premstaetten Austria, Europe Tel: +43 (0) 3136 500 0

Please visit our website at [www.ams.com](http://www.ams.com)

Buy our products or get free samples online at [www.ams.com/Products](http://www.ams.com/Products)

Technical Support is available at [www.ams.com/Technical-Support](http://www.ams.com/Technical-Support)

Provide feedback about this document at [www.ams.com/Document-Feedback](http://www.ams.com/Document-Feedback)

For sales offices, distributors and representatives go to [www.ams.com/Contact](http://www.ams.com/Contact)

For further information and requests, e-mail us at [ams\\_sales@ams.com](mailto:ams_sales@ams.com)


Copyright ams AG. Trademarks Registered. All rights reserved. The material herein may not be reproduced, adapted, merged, translated, stored, or used without the prior written consent of the copyright owner.

ams AG shall not be liable to recipient or any third party for any damages, including but not limited to personal injury, property damage, loss of profits, loss of use, interruption of business or indirect, special, incidental or consequential damages, of any kind, in connection with or arising out of the furnishing, performance or use of the technical data herein. No obligation or liability to recipient or any third party shall arise or flow out of ams AG rendering of technical or other services.

Quick Start Guide · PUBLIC

QG000164 · v1-00 · 2020-Aug-12

## Documents / Resources

	<a href="#">ams TMD2712 ALS and Proximity Sensor Module</a> [pdf] User Guide TMD2712, ALS and Proximity Sensor Module
---	--

[Manuals+](#)