



ams TMD2621 Proximity Sensor Module for Behind OLED Applications User Guide

[Home](#) » [ams](#) » ams TMD2621 Proximity Sensor Module for Behind OLED Applications User Guide 

Contents

- [1 ams TMD2621 Proximity Sensor Module for Behind OLED Applications](#)
- [2 Out of the Box](#)
- [3 Software Installation](#)
- [4 Connect Hardware](#)
- [5 Start the Application](#)
- [6 Uninstall Application](#)
- [7 Documents / Resources](#)
- [8 Related Posts](#)



ams TMD2621 Proximity Sensor Module for Behind OLED Applications

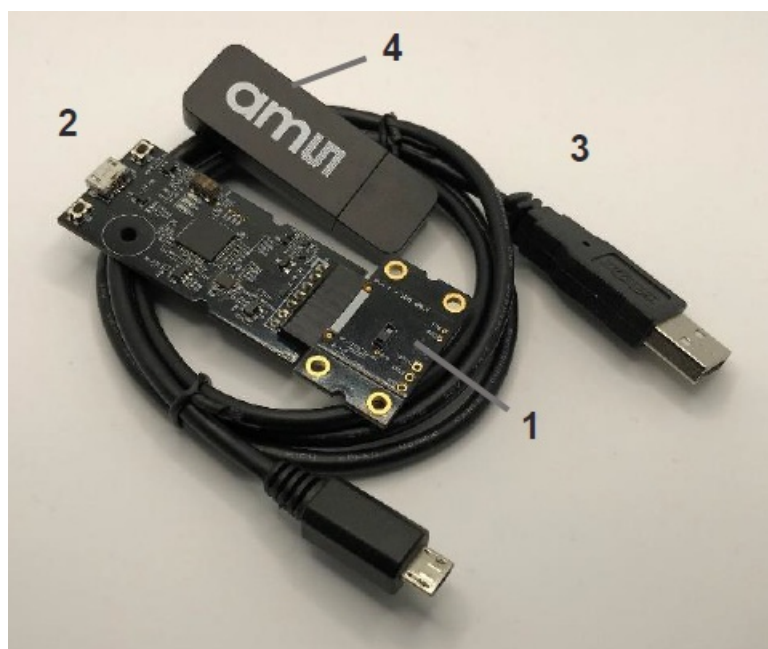


Out of the Box

For a detailed description of the TMD2621 EVM Proximity Sensor Module for Behind OLED Applications, please refer to User Guide

- TMD2621 EVM User Guide – UG001026

Each TMD2621 Evaluation Kit comes with the following components



No.	Item	Description
1	TMD2621 EVM Daughter Card	PCB with TMD2621 sensor installed
2	EVM Controller Board	Used to communicate USB-to-I2C
3	USB Cable (A to Micro-B)	Connects EVM controller to PC
4	Flash Drive	Contains application and document installer

Software Installation

1. Plug the flash drive into an unused USB port
2. Double-click the Setup.exe file on the flash drive, or click Start > Run and type E:Setup.exe and press Enter.
IMPORTANT: Use the appropriate drive letter in the above command to install the software. Flash Drive will commonly be assigned the next available drive letter for example C: hard drive, D: CD-ROM, E: flash drive

Figure 2:
Welcome Screen

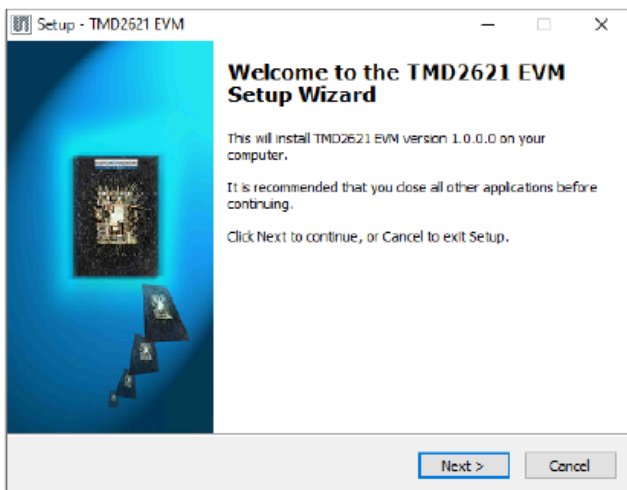


Figure 4:
Select Installation Location

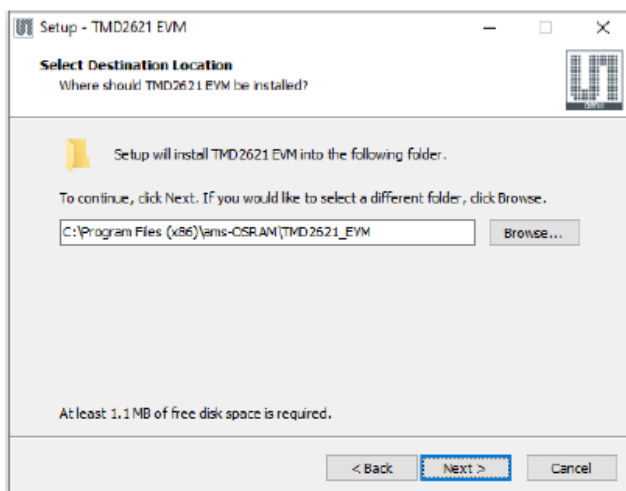


Figure 3:
Liability Disclaimer

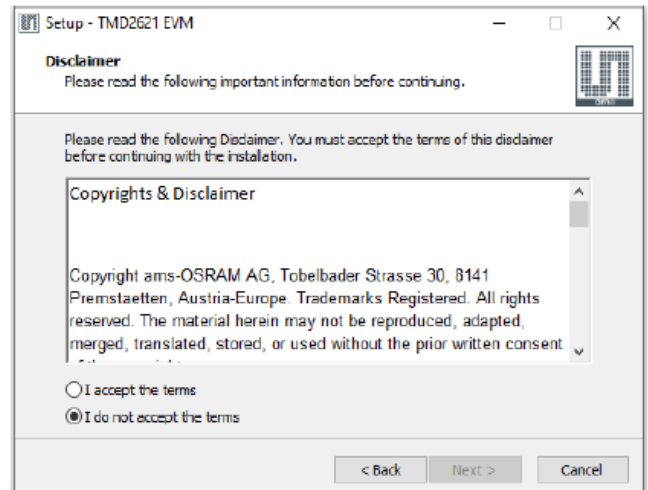


Figure 5:
Select Start Menu Folder

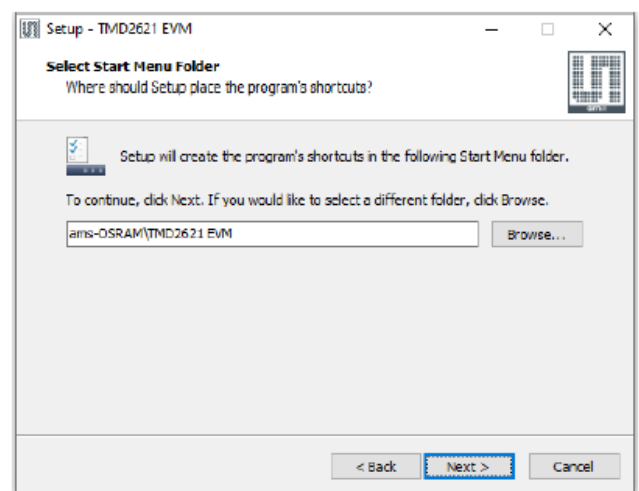


Figure 6:
Installation Progress

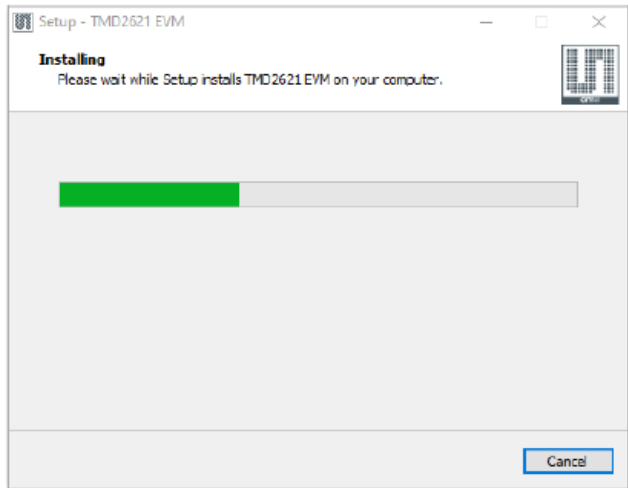


Figure 7:
Information Screen

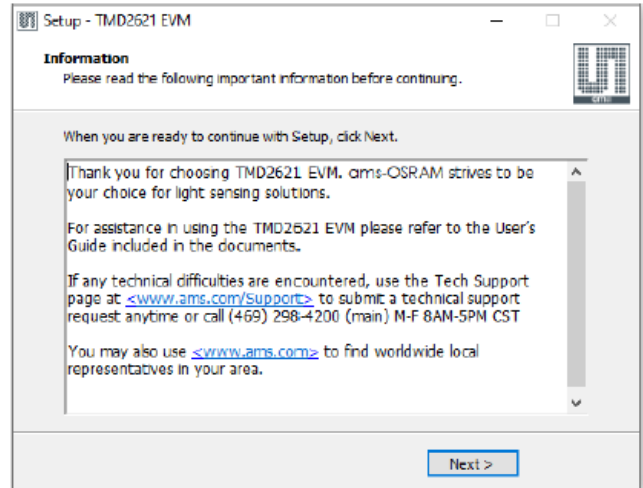
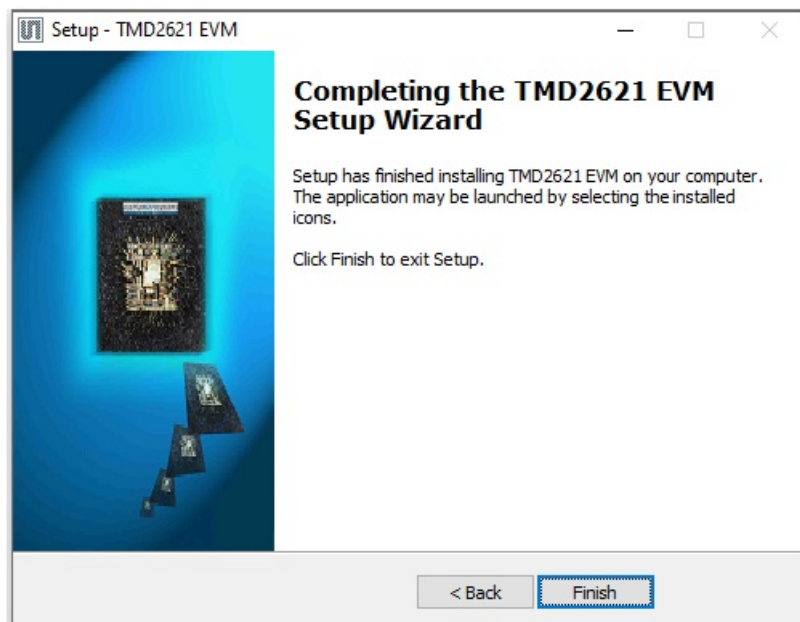


Figure 8:
Installation Completed Successfully



3. The Setup Wizard will open and guide you through the installation of the TMD2621 EVM host software, (Figure 2 through Figure 8).
4. The EVM Controller board requires the installation of FTDI CDM drivers. If these drivers are not installed on your machine, this setup will automatically launch the installer for the FTDI drivers.
5. At the end of the installation, click Finish to exit the setup.

Connect Hardware

Plug the TMD2621 EVM Daughterboard into the Controller board (Figure 1). Always use ESD procedures when handling the EVM. Using the enclosed USB cable, plug the micro-B connector into the EVM module. Using the other end of the cable, plug the USB A-connector into a USB port on the computer. When the USB cable is connected, the green LED should light to indicate that power is being received via the USB interface, and the controller board processor is running. If the green LED does not light, check the USB cable connections; unplug the USB cable and try again. If the green LED still does not light, check the PC for USB error messages. When the software application is run, it will turn off the green LED.

Start the Application

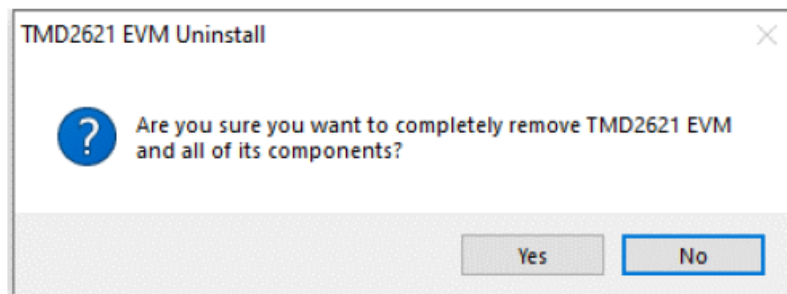
To start the application select **ams-OSRAM > TMD2621 EVM > TMD2621 EVM** on the system menu. The default installation directory depending on the device and the operating system you are using is

- **C:** \Program Files\ams-OSRAM\TMD2621_EVM (Windows 32-bit operating systems)
- **C:** \Program Files (x86)\ams-OSRAM\TMD2621_EVM (Windows 64-bit operating systems)
- A different install path may be selected by the user during the install (Figure 4). When started, the TMD2621 window will open on the PC and automatically connect to the hardware.

Uninstall Application

To remove the software from your computer (Figure 9), select **ams-OSRAM > TMD2621 EVM > Uninstall TMD2621 EVM** or use the Windows Control Panel.

Figure 9:
Remove Installation



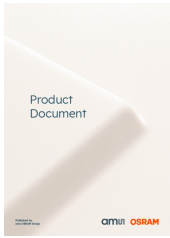
- **Headquarters:** Please visit our website at www.ams.com
- **ams-OSRAM AG:** Buy our products or get free samples online at www.ams.com/Products
- **Tobelbader Strasse 30:** Technical Support is available at www.ams.com/Technical-Support
- **8141 Premstaetten:** Provide feedback about this document at www.ams.com/Document-Feedback
- **Austria, Europe:** For sales offices, distributors and representatives go to www.ams.com/Contact
- **Tel:** +43 (0) 3136 500 0: For further information and requests, e-mail us at ams_sales@ams.com

Copyright ams-OSRAM AG. Trademarks Registered. All rights reserved. The material herein may not be reproduced, adapted, merged, translated, stored, or used without the prior written consent of the copyright owner.

ams-OSRAM AG shall not be liable to recipient or any third party for any damages, including but not limited to personal injury, property damage, loss of profits, loss of use, interruption of business or indirect, special, incidental or consequential damages, of any kind, in connection with or arising out of the furnishing, performance or use of the technical data herein. No obligation or liability to recipient or any third party shall arise or flow out of ams-OSRAM AG rendering of technical or other services.

QG001016 • v1-00 • 2022-Mar-21

Documents / Resources



[ams TMD2621 Proximity Sensor Module for Behind OLED Applications](#) [pdf] User Guide
TMD2621 Proximity Sensor Module for Behind OLED Applications, TMD2621, Proximity
Sensor Module for Behind OLED Applications, Sensor Module for Behind OLED Applications, B
ehind OLED Applications, OLED Applications, Applications

Manuals+.