



# ams-OSRAM TMD2712 EVM ALS and Proximity Sensor Module User Guide

[Home](#) » [ams OSRAM](#) » ams-OSRAM TMD2712 EVM ALS and Proximity Sensor Module User Guide 



**User Guide**  
UG000498  
**TMD2712**  
**TMD2712 EVM**  
**ALS and Proximity Sensor Module**  
v1-00 • 2020-Aug-12

## Contents

- [1 Introduction](#)
- [2 Getting Started](#)
- [3 Hardware Description](#)
- [4 Software Description](#)
- [5 Resources](#)
- [6 Revision Information](#)
- [7 Legal Information](#)
- [8 Documents / Resources](#)
  - [8.1 References](#)

## Introduction

The TMD2712 evaluation kit comes with everything needed to evaluate the TMD2712. The device features proximity detection and digital ambient light sensing (ALS).

### 1.1 Kit Contents

Figure 1:  
Evaluation Kit Contents



No.	Item	Description
1	TMD2712 Daughter Card	PCB with TMD2712 sensor installed
2	EVM Controller Board	Used to communicate USB to I2C
3	USB Cable (A to Mini-B)	Connects EVM controller to PC
4	Flash Drive	Include application installer and documents

## 1.2 Ordering Information

Ordering Code	Description
TMD2712 EVM	TMD2712 ALS and Proximity Sensor Module

## Getting Started

The software should be installed prior to connecting any hardware to the computer. Follow the instructions found in the Quick Start Guide (QSG). This loads the required driver for the USB interface and the device's graphical user interface (GUI).

The balance of this document identifies and describes the controls available on the GUI. In combination with the TMD2712 datasheet, the QSG and application notes available on the ams website, [www.ams.com](http://www.ams.com), there should be enough information to allow evaluation of the TMD2712 device.

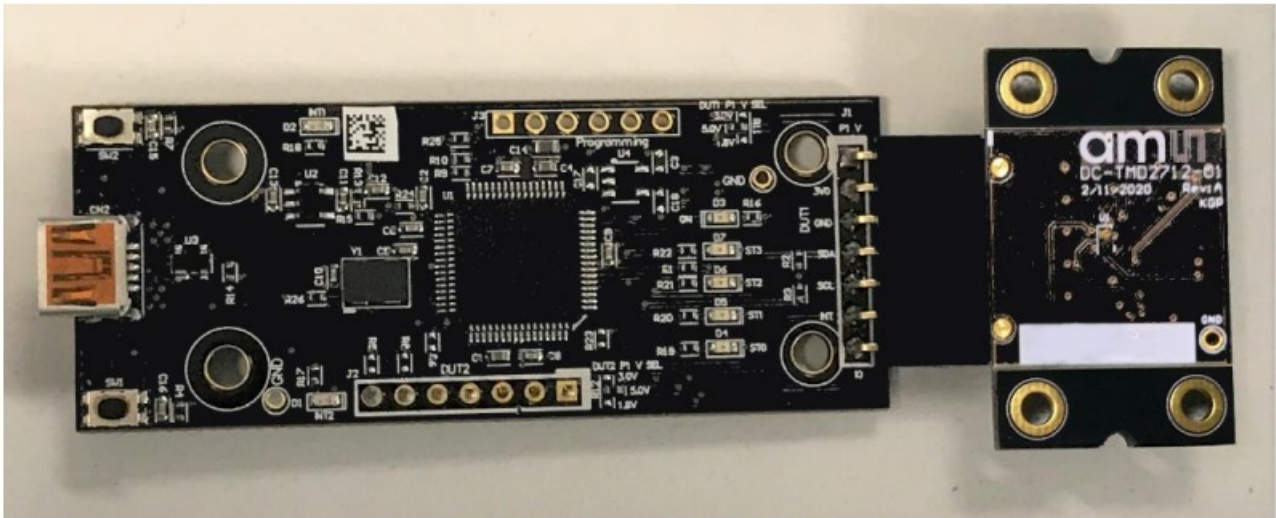
## Hardware Description

The hardware consists of the EVM Controller, the TMD2712 EVM daughter card, and a USB interface cable. The EVM controller board provides power and I2C communication to the daughter card through a seven-pin connector. When the EVM controller is connected to the PC through USB, a green LED on the board flashes once

on power up to indicate the system is getting power.

For schematics, layout and BOM information please see the documents included with the install located in the TMD2712 EVM folder (All Programs -> ams -> TMD2712 EVM -> Documents).

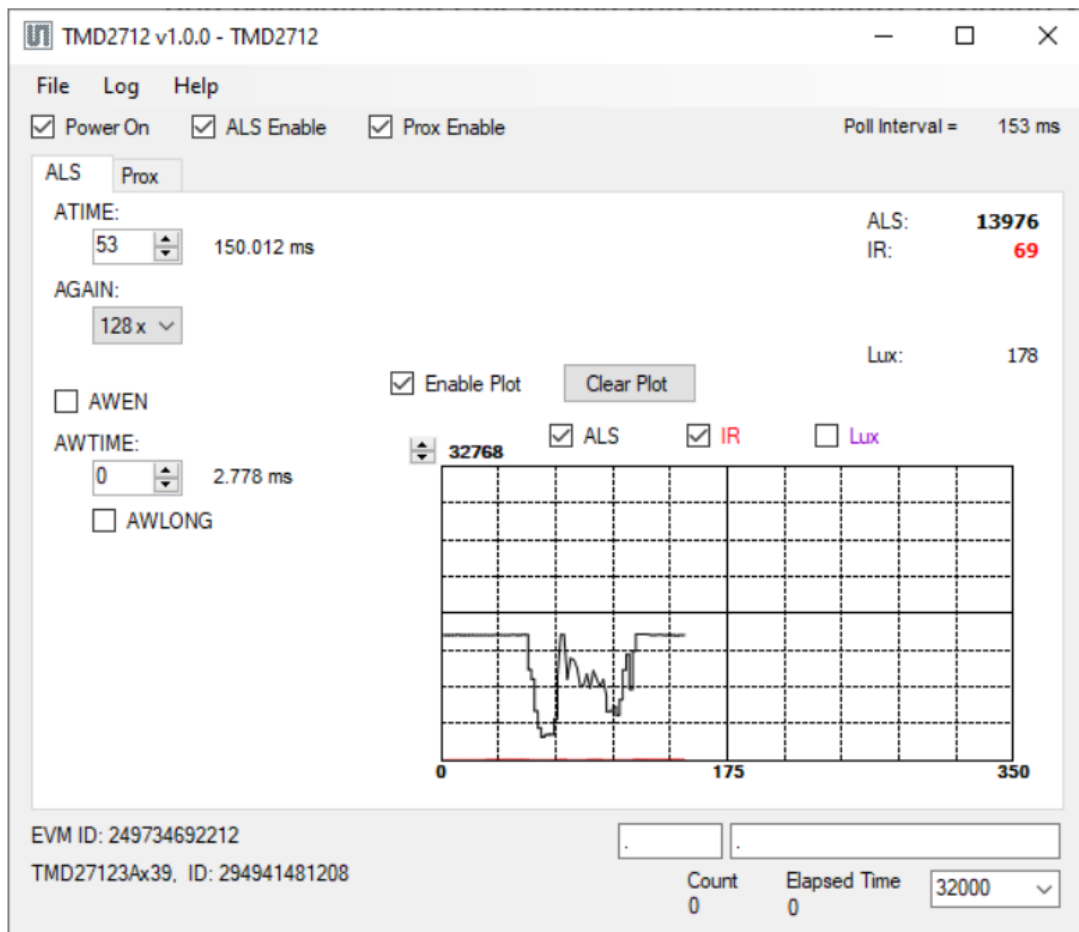
**Figure 2:**  
**Evaluation Kit Hardware**



## Software Description

The main window (Figure 3) contains the system menus, system level controls, device information and logging status. The ALS tab contains controls for the light sensing function and the Prox tab contains settings for the proximity function. The application polls the ALS and proximity raw data continuously and calculates the Lux values and prox standard deviation values.

**Figure 3:**  
**GUI Main Window**



#### 4.1 Connect Software to Hardware

On startup, the software automatically connects to the hardware. On successful initialization, the software displays a main window, containing controls pertinent to the connected device. If the software detects an error, an error window appears. If “Device not found or is unsupported” appears, verify the correct daughterboard is properly connected to the EVM controller board. If “Cannot connect to EVM board” appears, verify the USB cable is connected. When the EVM controller board is connected to the USB, a green LED on the board flashes once on power up to indicate the USB cable is connected and providing power to the system.

If the EVM board disconnects from the USB bus while the program is running, it displays an error message and then terminates. Reconnect the EVM board and restart the program.

#### 4.2 System Menus

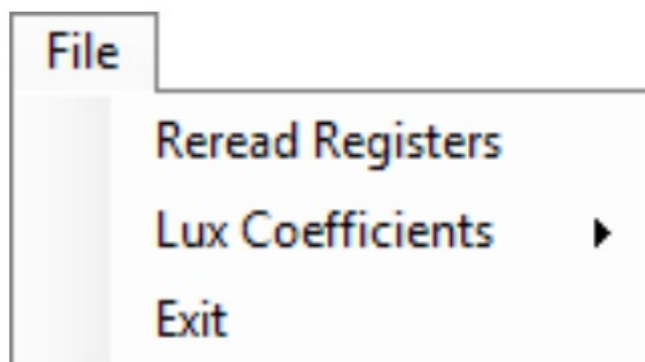
At the top of the window there are pull-down menus labeled “File”, “Log”, and “Help”. The File menu provides basic application-level control. The Log menu controls the logging function, and the Help menu provides version and copyright information for the application.

##### 4.2.1 File Menu

The File menu contains the following functions:

**Figure 4:**

**File Menu**



The Reread Registers function forces the program to re-read all of the control registers from the device and display them on the screen. This does not read the output data, because the program reads those registers continually while it is running.

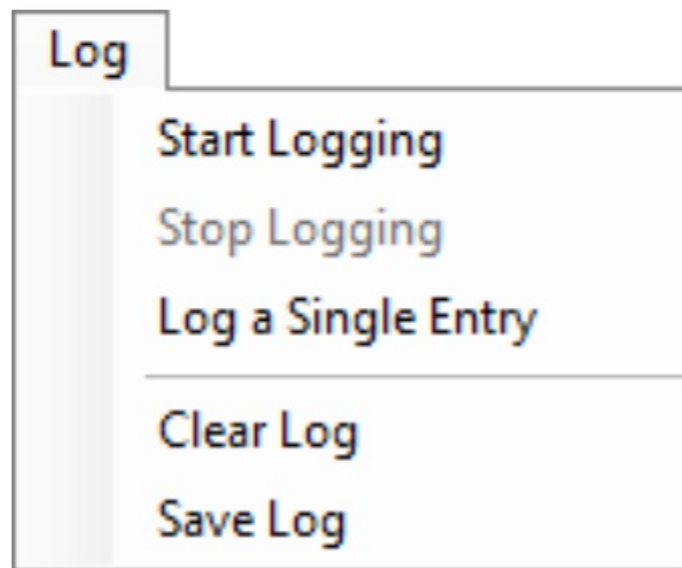
The Lux Coefficients menu allows the user to Display, Load or Save the lux coefficients used to calculate lux. See ALS Lux Coefficients section for more details.

Click on the Exit command to close the main window and terminate the application. Any unsaved log data is cleared from memory. The application can also be close by clicking the red "X" in the upper right hand corner.

#### 4.2.2 Log Menu

The Log menu controls the logging function and saves the log data to a file. Log data accumulates in memory until discarded or written to a data file.

**Figure 5:**  
**Log Menu**



Click Start Logging to start the logging function. Each time the program polls the output information from the device, it creates a new log entry showing the raw data values, the values of various control registers, and the values entered by the user into the text fields near the bottom right corner of the window.

Click Stop Logging to stop the logging function. Once logging stops, the user may store the data in a file, or continue collecting additional data by clicking Start Logging again.

The Log a Single Entry command causes logging to start, collect one single entry, and immediately stop again. This function is not available when logging is already running.

Click Clear Log to discard any previously collected data. If there is data in memory, which has not been saved to disk, this function displays a prompt asking to verify it is OK to discard the data. If the log is active when this function executes, the log continues running after the existing data is discarded.

Click Save Log to save the collected log data to a csv file. This stops the logging function, if it is active, and displays a file dialog box to specify where to store the logged data. The Log Status and Control Information section below describes the default file name, but you may change the file name if desired.

#### 4.2.3 Help Menu

The Help menu contains a single function: About.

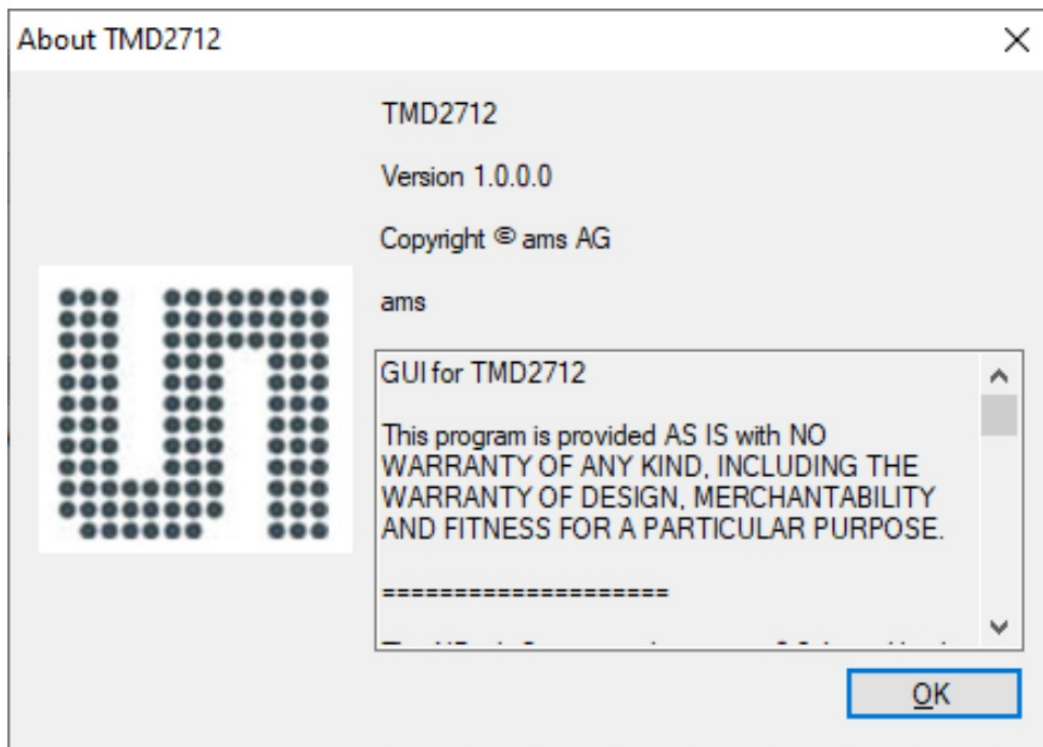
**Figure 6:**  
**Help Menu**



The About function displays a dialog box (Figure 7) showing the version and copyright information for the

application and library. Click the OK button to close this window and continue.

**Figure 7:**  
**About Window**



#### 4.3 System Level Controls

Immediately below the top menu bar there are checkboxes used to control the system level functions of the TMD2712 device.

The Power On checkbox controls the PON function of the TMD2712. When this box is checked, the power is on and the device can operate. When this box is unchecked, the power is off and the device does not operate (You can still change the control registers, but the device does not perform ALS and Prox functions).

The ALS Enable checkbox controls the AEN function of the TMD2712. When this box is checked, the device collects and report ALS data as programmed. When this box is unchecked, the ALS function does not operate.

The Prox Enable checkbox controls the PEN function of the TMD2712. Proximity detection is enabled when this box is checked or disabled when unchecked.

#### 4.4 Auto Polling

The application automatically polls the TMD2712 raw data of ALS and Prox if enabled. The Poll Interval displays the time between reads of the device.

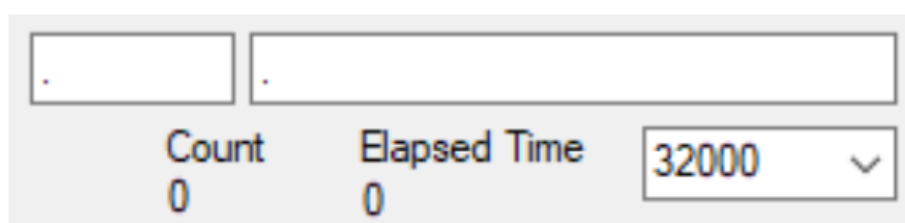
#### 4.5 Device ID Information

The lower left corner of the window displays the ID number of the EVM Controller board, identifies the device being used and displays the ID of the device.

#### 4.6 Log Status and Control Information

The lower right corner of the window contains status information and controls for the logging function:

**Figure 8:**  
**Logging Status**





This section contains text boxes that are stored in the log file data and used to build the file name for the log file. If the data in these fields are changed, the new values are stored with any new data logged. The default file name is based on these values at the time the log file is written. If nothing is entered in these boxes they default to a period (“.”).

TMD2712\_1-2-3\_Log\_HH\_MM\_SS.csv

From Application

From User Input

The Count value displayed is a count of the number of samples currently in the log buffer.

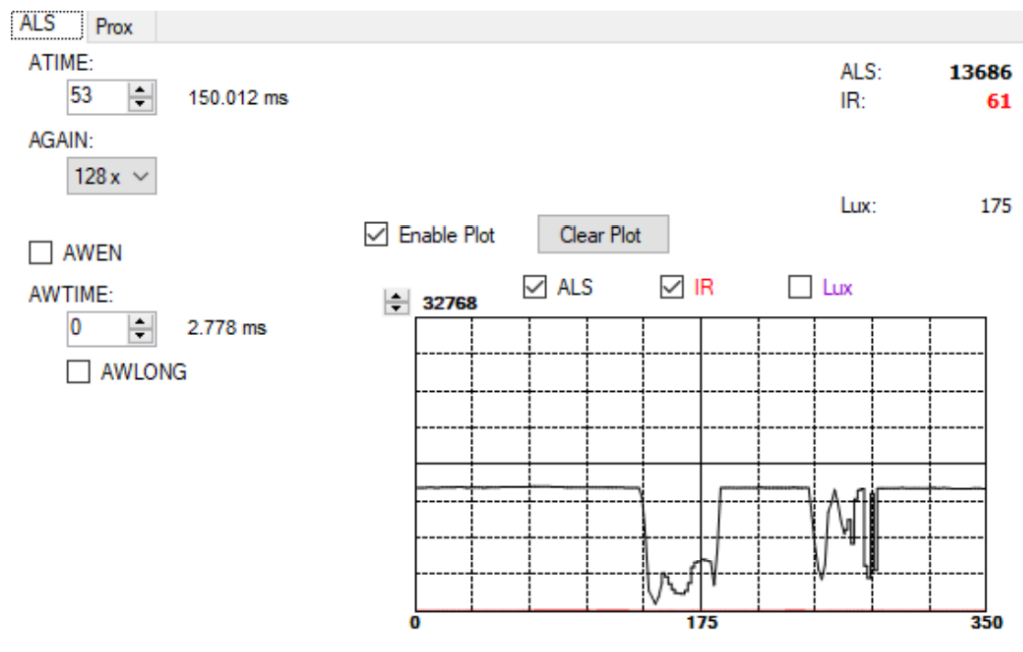
The Elapsed Time value indicates the elapsed time since data logging started.

The numeric box in the bottom right-hand corner sets a limit to the size of the collected dataset. You may select a value from the pull-down list, or enter a value manually. When the number of entries in the log reaches this value, the program will automatically stop logging and display a file dialog box to specify where to store the logged data. You may change the file name if desired. The maximum value that may be entered in this field is 32000.

#### 4.7 “ALS” Tab

The main portion of the screen contains a tab labeled ALS. The controls in this tab are divided into 3 sections, each performing a separate function.

**Figure 9 :**  
**ALS Tab**



##### 4.7.1 ALS Controls

The left side of the ALS tab contains controls to set various ALS settings.

The ATIME control sets the time of the ALS integration. ATIME can be adjusted in 2.778ms steps.

The AGAIN control is a pulldown menu which sets the analog gain of the ALS sensor. The values available are 16x, 128x and 1024x.

The AWEN checkbox controls the ALS Wait feature. When this box is checked, the values for WTIME and WLONG determine the time between ALS cycles. When this box is unchecked, there is no wait period between ALS cycles and the values of AWTIME and AWLONG are ignored.

The AWTIME control sets the time to wait between ALS cycles. AWTIME can be adjusted in 2.778ms steps.

The AWLONG checkbox controls the AWTIME factor. When this box is checked, the wait time between ALS cycles increases by a factor of 12x.

#### 4.7.2 ALS Lux Coefficients

The TMD2712 supplies information that is used to calculate Lux (unit of illumination). The Lux equation for the TMD2712 uses a combination of data from the sensor and various coefficients to calculate the Lux value. The software is pre-configured with coefficients for an open-air configuration.

When the sensor is placed behind glass, different coefficients should be loaded into the software to update the Lux equation. The coefficients can be loaded or saved to an XML file using the File menu.

To ensure the proper XML format first save the current coefficients using File > Lux Coefficients > Save. Once the file is saved, locate the XML file created and edit with a text editor such as notepad to change the coefficients. Then go to File > Lux Coefficients > Load and select the XML file that was updated.

The software can also automatically load new coefficients upon starting the GUI. To do this save the XML file as TMD2712\_luxe.xml in the system documents directory (%USERPROFILE%\Documents, also known as My Documents). Then restart the GUI and see a dialog appear with the new coefficients displayed.

If you are experiencing trouble loading new coefficients, this may indicate a problem with the file format. The XML file must contain all the required Lux equation elements to be loaded. The format of the file follows the standard XML format and is as follows:

```
<?xml version="1.0" encoding="utf-8"?>
<!-- Device:TMD2712 Saved:5/11/2020 1:55:32 PM -->
<luxe>
<eq_values>
<coef value="246.743" name="DGF"/>
<coef value="1.622" name="CoefB"/>
<coef value="0.888" name="CoefC"/>
<coef value="1.117" name="CoefD"/>
</eq_values>
</luxe>
```

#### 4.7.3 ALS Output Data

The top right corner of the ALS tab displays the output data. This data is continuously read. The polling interval is shown above the tab.

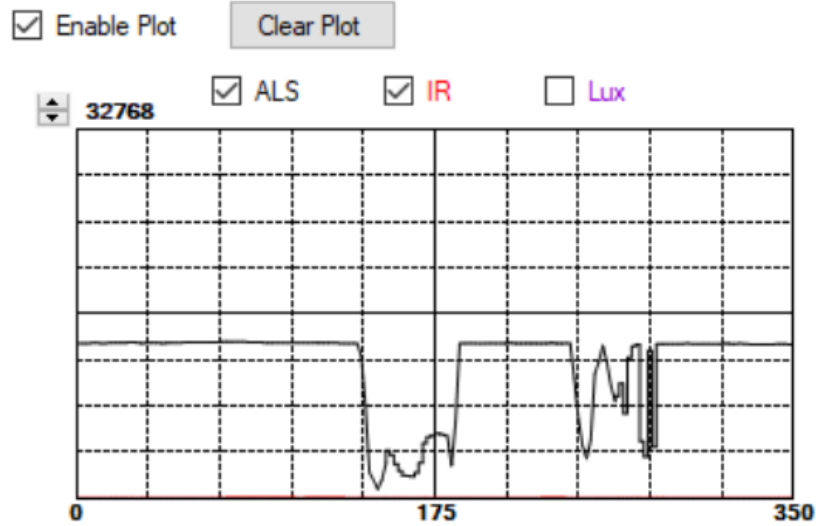
- ALS displays the Visible Light Channel data count.
- IR displays the IR Channel data count.
- Lux displays the calculated lux.

#### 4.7.4 ALS Data Plot

The remaining portion of the ALS tab is used to display a running plot of the collected ALS values and calculated Lux. The last 350 values are collected and plotted on the graph. As additional values are added, the old values will be deleted from the left side of the graph. To start the plotting function, check the Enable Plot checkbox and select the ALS, IR, or Lux checkboxes.

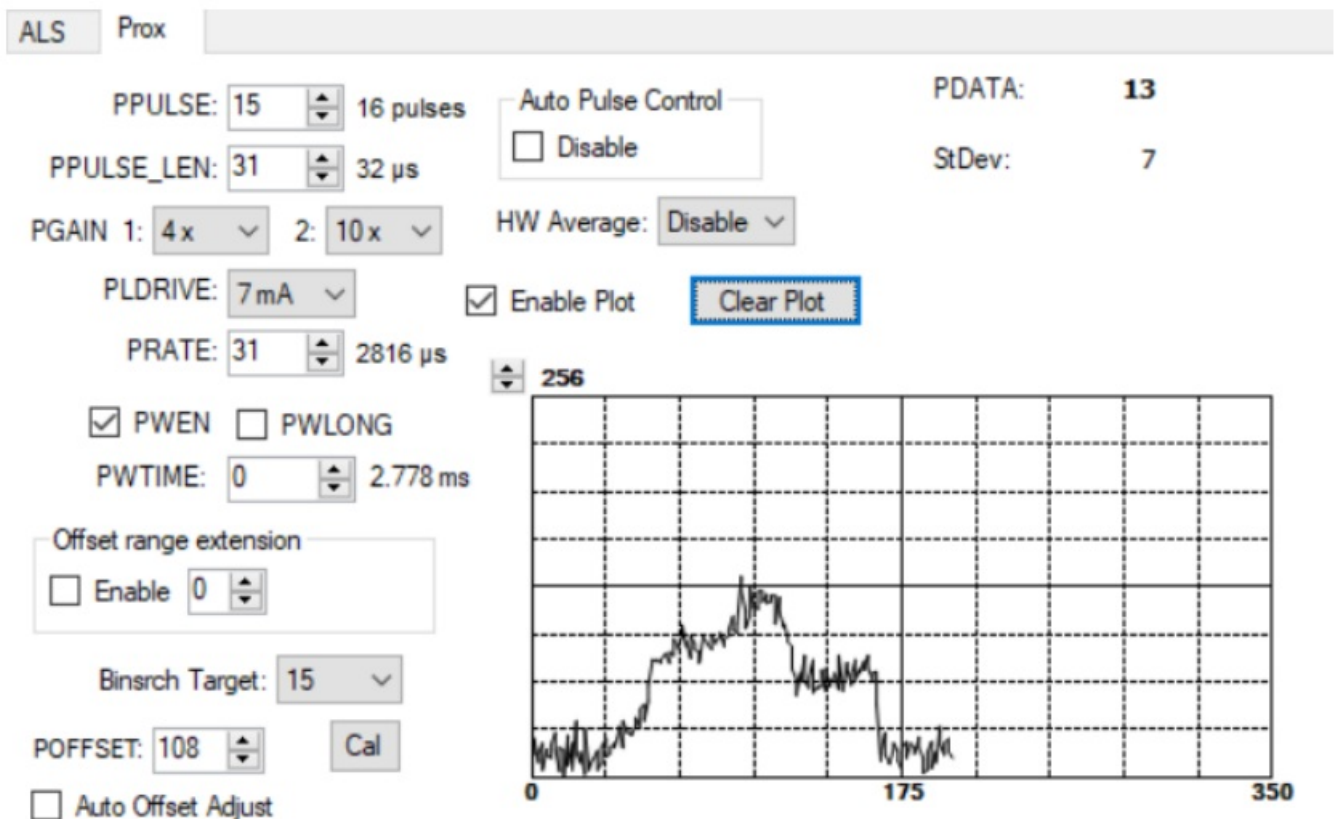
**Figure 10:**  
**ALS Data Plot**





The scale of the Y-axis of the plot can be adjusted by clicking on the small up and down arrows at the top left corner of the plot. The scale can be set to any power of 2 from 64 through 65536. Click the Clear Plot button to discard the current data and continue plotting the new data. Note if the Clear Plot button is clicked while the plot is disabled, the data is discarded, but the actual plot will not. The main portion of the screen contains a tab labeled Prox. The controls in this tab are divided into 3 sections, each performing a separate function. be updated until the plot function is re-enabled.

**Figure 11 :**  
**Prox Tab**



4.8.1

#### 4.8.1 Prox Controls

The left side of the Prox tab contains controls to set various Prox settings. The PPULSE controls the number of pulses used for each prox cycle. The number of pulses is one more than the

PULSE value and is displayed immediately to the right of the box. The PPULSE\_LEN control sets the width of all IR LED pulses within the proximity cycle. Longer pulses result in increased proximity range and typically result in less electrical noise generated in the analog front end. The PGAIN1 and PGAIN2 controls are pulldown menus that let you control the two gain stages of the proximity IR sensor. The PGAIN1 values are 1x, 2x, 4x and 8x. The PGAIN2 values are 2.5x, 5x and 10x. The PLDRIVE control sets the drive strength of the IR LED current. The values range 7mA to 10mA.

PRATE controls sets the duration of a single prox sample. The time is equal to  $(PRATE + 1) * 88\mu s$ .

The time, in microseconds, is displayed immediately to the right of this control.

The PWEN checkbox controls the Prox Wait feature. When this box is checked, the values for PWTIME and PWLONG determine the time between Prox cycles. When this box is unchecked, there is no wait period between Prox cycles and the values of WTIME and PWLONG are ignored.

The PWTIME control sets the time to wait between prox cycles. PWTIME can be adjusted in 2.778ms steps. The PWLONG checkbox controls the PWTIME factor. When this box is checked, the wait time between Prox cycles increases by a factor of 12x. The Offset Range Extension functionality has two controls. The Enable checkbox, turns the functionality on and off. The numeric control in this box sets the number of extension steps from Nominal to Nominal + 31 Steps. The Binsrch Target control sets the target value for the Proximity offset calibration function. The POFFSET controls shift PDATA to remove crosstalk from the proximity data. The values range from -255 to 255. This value can be set manually, or it can be set by the Proximity offset calibration.

The Cal button triggers the sensor's proximity offset calibration sequence. This function automatically selects a POFFSET to remove crosstalk from PDATA.

The Auto Offset Adjust checkbox enables the function that automatically decrements the POFFSET value any time the PDATA value is 0. When this function is active, manual changes to the POFFSET control are disabled, and the program will read and update the POFFSET value each time it reads the PDATA value.

The Auto Pulse Control function can be turned off with the Disable checkbox. This feature is used for hardware configurations with high crosstalk. When Auto Pulse Control is disabled, the range of the PDATA value is 0-1023

The HW Average control is a pulldown menu that defines the number of ADC samples collected and averaged during a cycle. The control can be set to "Disabled" or to 2, 4, 8, or 16 samples.

#### 4.8.2 Prox Output Data

The top right corner of the Prox tab displays the output data. This data is continuously read. The polling interval is shown above the tab.

- PDATA displays the Proximity ADC channel data counts
- StDev displays the calculated standard deviation of the last 32 PDATA samples displayed on the screen.

#### 4.8.3 Prox Data Plot

The remaining portion of the Prox tab is used to display a running plot of the collected PDATA values.

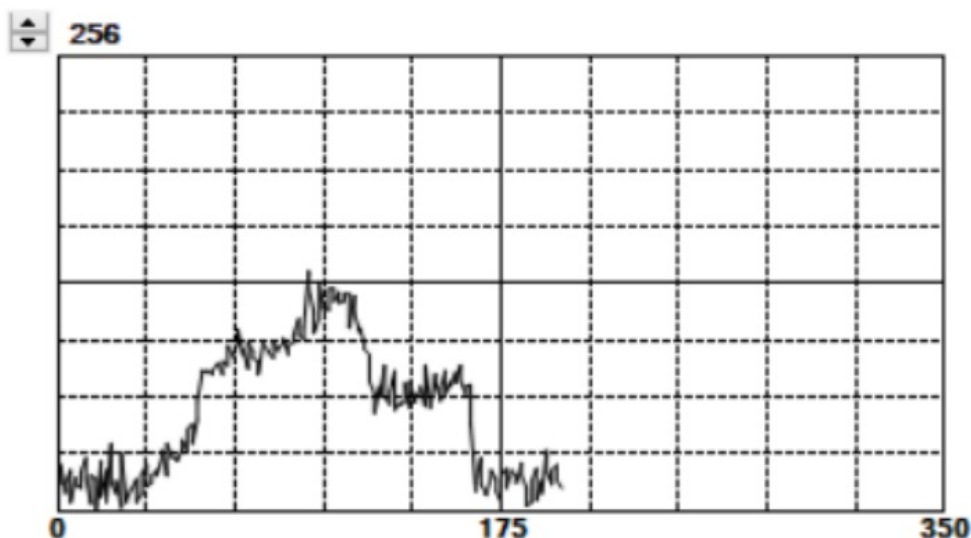
The last 350 values are collected and plotted on the graph. As additional values are added, the old values will be deleted from the left side of the graph. To start the plotting function, check the Enable Plot checkbox.

**Figure 12:**

#### **Prox Data Plot**

☒ Enable Plot

Clear Plot



The scale of the Y-axis of the plot can be adjusted by clicking on the small up and down arrows at the top left corner of the plot. The scale can be set to any power of 2 from 16 to 16384.

Click the Clear Plot button to discard the current data and continue plotting the new data. Note if the Clear Plot button is clicked while the plot is disabled, the data is discarded, but the actual plot will not be updated until the plot function is re-enabled.

## Resources

For additional information regarding the TMD2712, please refer to the datasheet. For information regarding the installation of the TMD2712 EVM host application software please refer to the TMD2712 EVM Quick Start Guide. Designer's Notebooks dealing with various aspects of optical measurement and optical measurement applications are available. All content is available on the ams website [www.ams.com](http://www.ams.com).



For further information, please refer to the following documents:

- TMD2712 Datasheet
- TMD2712 EVM Quick Start Guide (QSG)
- TMD2712 EVM User's Guide (this document)
- TMD2712 EVM Schematic Layout

## Revision Information

**Initial Release**

- Page and figure numbers for the previous version may differ from page and figure numbers in the current revision.
- Correction of typographical errors is not explicitly mentioned.

**Legal Information****Copyrights & Disclaimer**

Copyright ams AG, Tobelbader Strasse 30, 8141 Premstaetten, Austria-Europe. Trademarks Registered. All rights reserved.

The material herein may not be reproduced, adapted, merged, translated, stored, or used without the prior written consent of the copyright owner.

Demo Kits, Evaluation Kits and Reference Designs are provided to recipient on an “as is” basis for demonstration and evaluation purposes only and are not considered to be finished end-products intended and fit for general consumer use, commercial applications and applications with special requirements such as but not limited to medical equipment or automotive applications. Demo Kits, Evaluation Kits and Reference Designs have not been tested for compliance with electromagnetic compatibility (EMC) standards and directives, unless otherwise specified. Demo Kits, Evaluation Kits and Reference Designs shall be used by qualified personnel only.

ams AG reserves the right to change functionality and price of Demo Kits, Evaluation Kits and Reference Designs at any time and without notice. Any express or implied warranties, including, but not limited to the implied warranties of merchantability and fitness for a particular purpose are disclaimed. Any claims and demands and any direct, indirect, incidental, special, exemplary or consequential damages arising from the inadequacy of the provided Demo Kits, Evaluation Kits and Reference Designs or incurred losses of any kind (e.g. loss of use, data or profits or business interruption however caused) as a consequence of their use are excluded.

ams AG shall not be liable to recipient or any third party for any damages, including but not limited to personal injury, property damage, loss of profits, loss of use, interruption of business or indirect, special, incidental or consequential damages, of any kind, in connection with or arising out of the furnishing, performance or use of the technical data herein. No obligation or liability to recipient or any third party shall arise or flow out of ams AG rendering of technical or other services.

<b>Headquarters</b>	Please visit our website at <a href="http://www.ams.com">www.ams.com</a>
ams AG	Buy our products or get free samples online at <a href="http://www.ams.com/Products">www.ams.com/Products</a>
Tobelbader Strasse 30	Technical Support is available at <a href="http://www.ams.com/Technical-Support">www.ams.com/Technical-Support</a>
8141 Premstaetten	Provide feedback about this document at <a href="http://www.ams.com/Document-Feedback">www.ams.com/Document-Feedback</a>
Austria, Europe	For sales offices, distributors and representatives go to <a href="http://www.ams.com/Contact">www.ams.com/Contact</a>
Tel: +43 (0) 3136 500 0	For further information and requests, e-mail us at <a href="mailto:ams_sales@ams.com">ams_sales@ams.com</a>



Product Document

Published by

ams OSRAM Group

Downloaded from [Arrow.com](https://arrow.com).

Eval Kit Manual • PUBLIC

UG000498 • v1-00 • 2020-Aug-12

## Documents / Resources

A small thumbnail image of a document cover. It is light beige with a dark beige diagonal stripe. The text 'Product Document' is visible in the upper left, and the 'ams OSRAM' logo is in the lower right.	<p><a href="#">ams-OSRAM TMD2712 EVM ALS and Proximity Sensor Module</a> [pdf] User Guide TMD2712 EVM ALS and Proximity Sensor Module, TMD2712 EVM, ALS and Proximity Sensor Module, Proximity Sensor Module, Sensor Module</p>
---	---

## References

- [🔗 Sensor Solutions | ams](#)
- [🔗 Login | ams](#)
- [🔗 Login | ams](#)
- [🔗 Products | ams](#)
- [🔗 Login | ams](#)